

Governor Clyde M. Reed correspondence, Federal Census

This file includes subject correspondence relating to the federal census which is part of a bigger collection of Governor Clyde M. Reed correspondence.

Creator: Kansas. Governor (1929-1931 : Reed)

Date: 1929-1930

Callnumber: Governor's Office, Governor Clyde Reed, Correspondence Files, Subject Files, Box 9 Folder 10

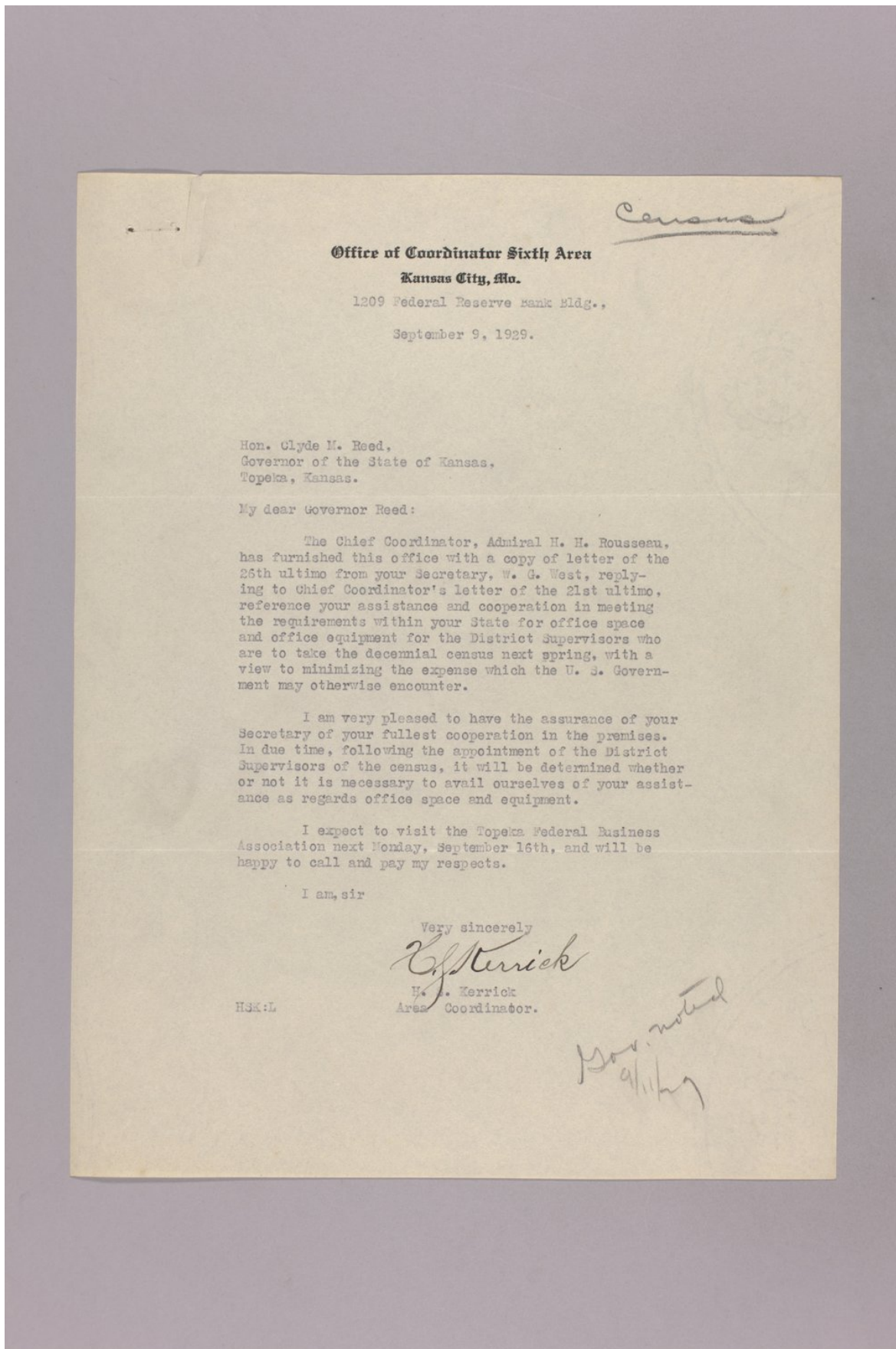
KSHS Identifier: DaRT ID: 450242

Item Identifier: 450242

www.kansasmemory.org/item/450242



Governor Clyde M. Reed correspondence, Federal Census



Office of Coordinator Sixth Area

Kansas City, Mo.

1209 Federal Reserve Bank Bldg.,

September 9, 1929.

Hon. Clyde M. Reed,
Governor of the State of Kansas,
Topeka, Kansas.

My dear Governor Reed:

The Chief Coordinator, Admiral H. H. Rousseau, has furnished this office with a copy of letter of the 26th ultimo from your Secretary, W. G. West, replying to Chief Coordinator's letter of the 21st ultimo, reference your assistance and cooperation in meeting the requirements within your State for office space and office equipment for the District Supervisors who are to take the decennial census next spring, with a view to minimizing the expense which the U. S. Government may otherwise encounter.

I am very pleased to have the assurance of your Secretary of your fullest cooperation in the premises. In due time, following the appointment of the District Supervisors of the census, it will be determined whether or not it is necessary to avail ourselves of your assistance as regards office space and equipment.

I expect to visit the Topeka Federal Business Association next Monday, September 16th, and will be happy to call and pay my respects.

I am, sir

Very sincerely

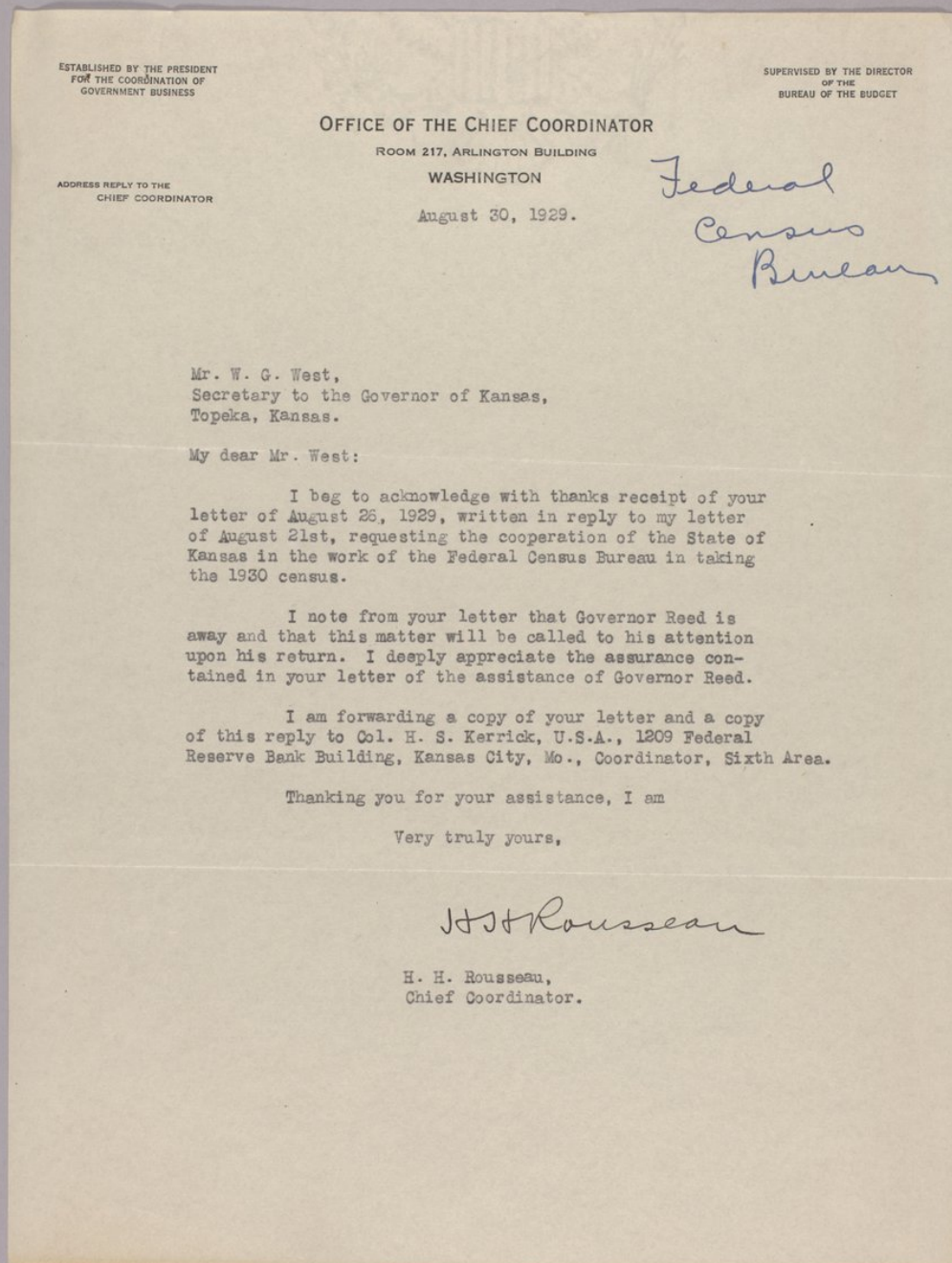
H. J. Kerrick

H. J. Kerrick
Area Coordinator.

HJK:L

Gov. noted
9/11/29

Governor Clyde M. Reed correspondence, Federal Census



Governor Clyde M. Reed correspondence, Federal Census

*Federal Census
work*

August 26, 1929

Hon. H. H. Rousseau
Chief Coordinator
Room 217, Arlington Building
Washington, D. C.

Dear Sir:

This is to acknowledge receipt of your communication under date of August 21 addressed to the Governor of Kansas requesting the furnishing of office space and equipment for use in the Federal census work which will begin February 1, 1930.

Governor Reed is at this time absent from the office attending the National Convention of Railroad and Public Utility Commissioners at Glacier National Park. He will not return until September 2 at which time your communication will be brought to his attention.

I am sure that Governor Reed will be very glad to assist your Department as far as possible to the end that the census work may be conducted in as efficient a manner as possible.

Very truly yours,

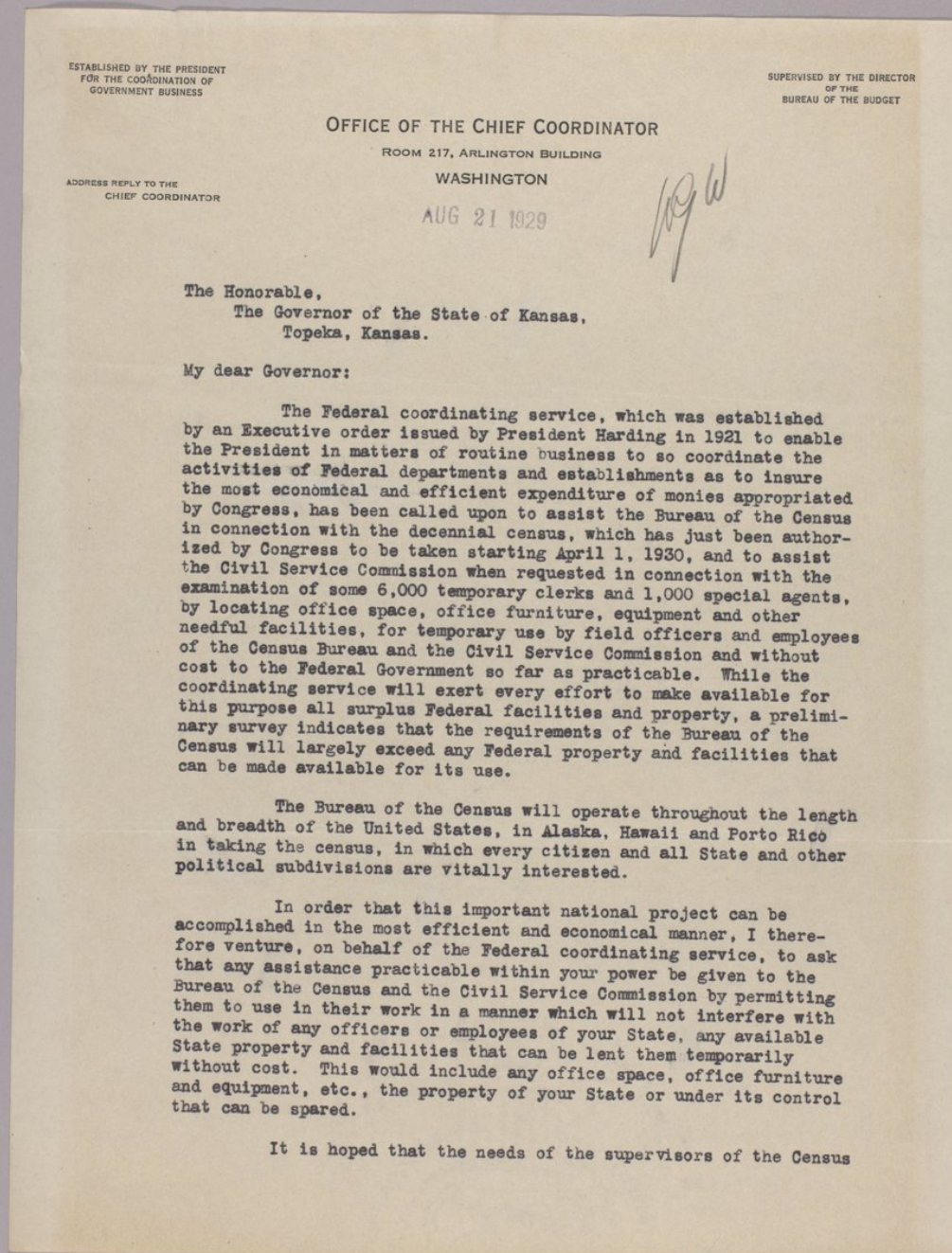
WGW:DT

Secretary to the Governor

Wesley



Governor Clyde M. Reed correspondence, Federal Census



Governor Clyde M. Reed correspondence, Federal Census

The Governor of the State of Kansas.

may be met, during the four months beginning about February 1, 1930, by your making available for their use without charge or liability (other than regards making good any loss or damage to State property), office space and various State-owned buildings, such as armories, etc., that might be lent for their use.

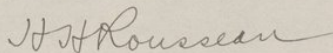
There is enclosed in further explanation of this request for assistance a copy of the instructions of this office, dated August 1, 1929, to the field officers of the coordinating service consisting of nine area coordinators and of approximately 280 Federal business associations which are scattered throughout the country in each State and in Alaska, Porto Rico and the Hawaiian Islands. There is also enclosed a list of the stations and addresses of present field representatives of the Census with their territorial jurisdictions.

Any favorable consideration that you may be able to give this request to assist the Federal Government will likewise be of very material help to the coordinating service in securing similar cooperation and assistance from the various county, municipal and school district officers in your State by the temporary use of similar facilities which they may be in a position to lend the Federal activities mentioned.

I should greatly appreciate a favorable reply to this letter and to be advised therein, if same is favorable, of the name and address of any State officer, or officers, who may be written to by this office in further connection with this request or by the area coordinator whose jurisdiction covers your State and whose address is as follows:

Col. H. S. Kerrick, USA,
Coordinator, Sixth Area,
1209 Federal Reserve Bank Bldg.,
Kansas City, Mo.

Very truly yours,



H. H. Rousseau,
Chief Coordinator.

Encl-2

Governor Clyde M. Reed correspondence, Federal Census

AUG 21 1929

The Honorable,
The Governor of the State of Kansas,
Topeka, Kansas.

My dear Governor:

The Federal coordinating service, which was established by an Executive order issued by President Harding in 1921 to enable the President in matters of routine business to so coordinate the activities of Federal departments and establishments as to insure the most economical and efficient expenditure of monies appropriated by Congress, has been called upon to assist the Bureau of the Census in connection with the decennial census, which has just been authorized by Congress to be taken starting April 1, 1930, and to assist the Civil Service Commission when requested in connection with the examination of some 6,000 temporary clerks and 1,000 special agents, by locating office space, office furniture, equipment and other needful facilities, for temporary use by field officers and employees of the Census Bureau and the Civil Service Commission and without cost to the Federal Government so far as practicable. While the coordinating service will exert every effort to make available for this purpose all surplus Federal facilities and property, a preliminary survey indicates that the requirements of the Bureau of the Census will largely exceed any Federal property and facilities that can be made available for its use.

The Bureau of the Census will operate throughout the length and breadth of the United States, in Alaska, Hawaii and Porto Rico in taking the census, in which every citizen and all State and other political subdivisions are vitally interested.

In order that this important national project can be accomplished in the most efficient and economical manner, I therefore venture, on behalf of the Federal coordinating service, to ask that any assistance practicable within your power be given to the Bureau of the Census and the Civil Service Commission by permitting them to use in their work in a manner which will not interfere with the work of any officers or employees of your State, any available State property and facilities that can be lent them temporarily without cost. This would include any office space, office furniture and equipment, etc., the property of your State or under its control that can be spared.

It is hoped that the needs of the supervisors of the Census

Governor Clyde M. Reed correspondence, Federal Census

The Governor of the State of Kansas.

may be met, during the four months beginning about February 1, 1930, by your making available for their use without charge or liability (other than regards making good any loss or damage to State property), office space and various State-owned buildings, such as armories, etc., that might be lent for their use.

There is enclosed in further explanation of this request for assistance a copy of the instructions of this office, dated August 1, 1929, to the field officers of the coordinating service consisting of nine area coordinators and of approximately 280 Federal business associations which are scattered throughout the country in each State and in Alaska, Porto Rico and the Hawaiian Islands. There is also enclosed a list of the stations and addresses of present field representatives of the Census with their territorial jurisdictions.

Any favorable consideration that you may be able to give this request to assist the Federal Government will likewise be of very material help to the coordinating service in securing similar cooperation and assistance from the various county, municipal and school district officers in your State by the temporary use of similar facilities which they may be in a position to lend the Federal activities mentioned.

I should greatly appreciate a favorable reply to this letter and to be advised therein, if same is favorable, of the name and address of any State officer, or officers, who may be written to by this office in further connection with this request or by the area coordinator whose jurisdiction covers your State and whose address is as follows:

Col. H. S. Kerrick, USA,
Coordinator, Sixth Area,
1209 Federal Reserve Bank Bldg.,
Kansas City, Mo.

Very truly yours,

H. H. Rousseau,
Chief Coordinator.

Encl-2

Governor Clyde M. Reed correspondence, Federal Census

OFFICE OF THE CHIEF COORDINATOR

WASHINGTON

August 1, 1929.

To: All area coordinators.

Subject: Decennial census.

1. During the coming year, the coordinating service will have an unequalled opportunity to render a real service to the Government.

In the performance of their duties in connection with the taking of the decennial census, the Bureau of the Census will require the temporary use of space for office and storage purposes and the use of typewriters, office furniture, and equipment, in many localities throughout the United States, Alaska, Hawaii and Porto Rico. These facilities will be needed for about four months beginning about February 1, 1930.

It is believed that, under the supervision of the area coordinators, the Federal business associations are in an excellent position to ascertain the field requirements of the activity mentioned above, survey the local situation in each case, and obtain wherever possible the loan of space and other facilities needed by this activity. In this manner a great saving of Federal funds is possible by the reduction to a minimum or entire avoidance of expenditures of money for these purposes.

This project is a challenge to the vision, versatility, resourcefulness and general efficiency of the field organization of the coordinating service and this office is confident of the satisfactory results that will be achieved in effecting economy.

2. Clearance. So that the coordinating service may function as stated, the instructions of the Bureau of Census to its field representatives will require that, in every case of need for space or other facilities, the representative concerned will make application to the designated official of the local Federal business association for clearance of the rental of space, and for the rental or purchase of typewriters, furniture and equipment. Such clearances will be handled by the coordinating service as outlined below and finally acted upon by this office. Unless specifically authorized by this office, no clearance will be given by any area

Governor Clyde M. Reed correspondence, Federal Census

All area coordinators

8/1/29

coordinator or local official of the coordinating service without reference of the application and appropriate recommendations to this office.

For the purposes of this project only, the limitation of \$500 prescribed in paragraph 2, Section II, Bulletin No. 113, is suspended and applications for rentals in any amount will be handled in accordance with these instructions.

3. Census requirements. The maximum amount of space desired in each city where Census supervisors are located is estimated to be approximately 4,000 square feet and the minimum 1,200 square feet. Ten chairs, four desks, and a typewriter and stand will be required for each unit. Transportation and garage space may be needed in the larger cities.

A list of the stations and addresses of the district representatives of the Census, with their territorial jurisdiction, is attached. These representatives and supervisors have not been designated as yet and a list of them will be furnished you by this office immediately following their appointment. Meanwhile, however, communications will reach them if addressed to the Supervisor of the Census, in care of the postmaster at the stations mentioned in the list forwarded herewith.

4. Area coordinators' duties. Besides the usual supervision of the project, it shall be the duty of each area coordinator to ensure that each territorial unit included in the plans of the Bureau of the Census is definitely assigned to a coordinating zone. The district representatives of the Census, as well as the Federal business associations concerned, should be advised of the assignments and requested to establish and maintain continuous contact. Also, it shall be the duty of each area coordinator to make certain that these instructions, and any others deemed necessary, are properly distributed and thoroughly understood by the Federal business associations and the project pressed to completion in due season.

Every effort should be made to prevent the necessity of clearance for rental, hire, or purchase of facilities if space or property can be located and made available for these purposes. In this connection, you are advised that this office is writing the Governors of the states asking for cooperation in making available for this purpose any suitable state property. Area coordinators will contact at the proper time, either directly or through the Federal business associations, any state, county, municipal or school district officials, boards of trade, chambers of commerce, or other civil groups, which may have suitable buildings or other surplus property in their custody, that can be secured for temporary use by the Census Bureau.

Governor Clyde M. Reed correspondence, Federal Census

All Area Coordinators

8/1/29

5. Federal business associations' duties. Upon receipt of information from the area coordinator relative to the appointment of the district representatives of the Bureau of the Census, the Federal business associations will take immediate steps to make close contact with every such district representative in their respective coordinating zones and will proffer their assistance. The district representatives mentioned should be advised to submit a requisition in letter form to the Federal business association setting forth the amount of space needed for office and storage purposes, the time of occupancy, and suggestions as to location, etc., for greatest convenience. A similar requisition should be submitted at the same time covering equipment, office furniture, etc., required.

It is suggested that Federal business associations might find it advantageous for the purposes of this project to appoint a special committee to work in conjunction with its regular committees and coordinate their activities. At points where district representatives of the Bureau of the Census are located within the zone but at some distance from the headquarters of the Federal business associations, a selected official might be designated as a representative of this committee.

Under instructions from the area coordinator, Federal business associations should contact any state, county, municipal or school district officials, boards of trade, chambers of commerce, or other civil groups, which may have suitable buildings or other surplus property in their custody.

Immediately following the receipt of requisitions from the district representatives, an investigation will be made by the Federal business association by its committee or representative, to determine:

- a. Whether or not there is space available in Government-owned or rented buildings that may be used for this purpose.
- b. Whether or not there is any other property needed by these units in the custody of Federal activities that may be made available for this purpose.
- c. If space or property is not available from Federal sources, whether or not it is obtainable from state, county, municipal or school district officials.
- d. If space or property is not available from any of the above sources, whether or not it is obtainable from civil groups.

Governor Clyde M. Reed correspondence, Federal Census

All Area Coordinators

8/1/29

If, after the above surveys, there has not been located the full amount of space or other facilities that in the opinion of the Federal business association are deemed necessary and suitable to meet the needs of the district representatives of the Census, these latter officials will make application for authority to rent, hire or purchase what in their opinion is necessary to complete their requirements and submit this requisition accompanied by a full statement explanatory of such need to the Federal business association. The Federal business associations will appropriately endorse the requisitions and forward them to the area coordinator. The Federal business association concerned will be advised by the area coordinator of the final action taken by this office on each requisition.

6. Progress reports. A copy of all supplemental instructions issued by area coordinators, or any constructive action taken by Federal business associations, in carrying out this project, will be forwarded to this office as soon as issued and will also be furnished to other area coordinators. On December 15, 1929, area coordinators will report progress to this office based upon statements obtained through the Federal business association from each Census Bureau supervisor, setting forth his views as to how his desires have been met and what, if anything, still remains to be done.

7. Final report. Upon the completion of the project as a whole it is directed that the Federal business associations prepare a report for each city or town, giving the following information:

- a. Name of city or town.
- b. Number of square feet of space furnished
 - (1) Office
 - (2) Storage
 - (3) Garage
- c. Average value per square foot of such space
- d. Estimated savings by use of space
- e. List of furniture and equipment furnished
- f. Estimated savings by use of furniture and equipment furnished
- g. Transportation furnished and saving thereby
- h. Estimate of all other savings
- i. Total savings.

Area coordinators will assemble all such reports in their areas, summarize them under the above headings, and transmit the reports and summary to this office.

8. While the Civil Service Commission feels that its field representatives, with its present space assignment and equipment, will be able to take care of such examinations as are necessary in

Governor Clyde M. Reed correspondence, Federal Census

All Area Coordinators

8/1/29

the appointment of some 6,000 temporary clerks and 1,000 special agents, still this field force has been instructed not to rent space without first presenting the matter to the local Federal business association for reference, as laid down in the preceding paragraphs for the Census Bureau.

Caution. Emphasis must be placed on the fact that, while advice may be given by those in the coordinating service familiar with lingual and other local conditions affecting the selection of personnel as enumerators, such advice will be given only on request of those charged by law with the appointment of enumerators and the coordinating service will otherwise hold itself aloof from participation in this phase of the census project.

H. H. Rousseau,
Chief Coordinator.

Enc.

- 5 -

Governor Clyde M. Reed correspondence, Federal Census

SUPERVISORS' DISTRICTS	HEADQUARTERS	SUPERVISORS' DISTRICTS	HEADQUARTERS
<u>ALABAMA</u>		<u>COLORADO</u>	
1	Jasper	1	Steamboat Springs
2	Huntsville	2	Boulder
3	Gadsden	3	Denver
4	Birmingham	4	Greeley
5	Roanoke	5	Grand Junction
6	Tuscaloosa	6	Canon City
7	Selma	7	Colorado Springs
8	Montgomery	8	Durango
9	Mobile	9	Alamosa
10	Georgiana	10	Pueblo
11	Slocomb		
<u>ARIZONA</u>		<u>CONNECTICUT</u>	
1	Prescott	1	Waterbury
2	Phoenix	2	Hartford
3	Tucson	3	Willimantic
		4	Bridgeport
		5	New Haven
<u>ARKANSAS</u>		<u>DELAWARE</u>	
1	Fayetteville		Dover
2	Batesville	1	
3	Jonesboro		
4	Marianna		
5	Fort Smith		
6	Little Rock	1	
7	Searcy	2	
8	Toxarkana	3	
9	Hot Springs	4	
10	Pine Bluff	5	
11	Camden	6	
		7	
<u>CALIFORNIA</u>		<u>FLORIDA</u>	
1	Santa Rosa		Pensacola
2	Redding		Ocala
3	Sacramento		Jacksonville
4	Placerville		Tampa
5	Vallejo		Orlando
6 & 7	San Francisco		Lakeland
8	Oakland		Miami
9	Stockton		
10	San Jose		
11	Fresno		
12	San Bernardino		
13	Santa Barbara		
14	Bakersfield		
15 to 19 (1)			
20	Santa Ana		
21	San Diego		

(1) Not definitely established. Probably 2 in Los Angeles City and 3 in convenient places in county.

Governor Clyde M. Reed correspondence, Federal Census

(3)

SUPERVISORS' DISTRICTS	HEADQUARTERS	SUPERVISORS' DISTRICTS	HEADQUARTERS
<u>IDAHO</u>		<u>IOWA</u>	
1	Coeur d'Alone	1	Spencer
2	Lewiston	2	Fort Dodge
3	Weiser	3	Cresco
4	Idaho Falls	4	Sioux City
5	Boise	5	Boone
6	Twin Falls	6	Waterloo
7	Pocatello	7	Dubuque
		8	Council Bluffs
		9	Des Moines
		10	Cedar Rapids
		11	Des Moines
		12	Newton
		13	Clarinda
		14	Ottumwa
		15	Kookuk
<u>ILLINOIS</u>		<u>KANSAS</u>	
1	Dixon		Colby
2	Rockford	1	Osborne
3	Evanston	2	Salina
4 to 8	Chicago	3	Manhattan
9	La Salle	4	Topoka
10	Aurora	5	Kansas City
11	Joliet	6	Dodge City
12	Moline	7	Hutchinson
13	Galesburg	8	Wichita
14	Peoria	9	Emporia
15	Bloomington	10	Ottawa
16	Danville	11	Independence
17	Quincy	12	Pittsburg
18	Pekin	13	
19	Champaign		
20	Jacksonville		
21	Springfield		
22	Decatur		
23	Alton		
24	Effingham		
25	East St. Louis		
26	Centralia		
27	Murphysboro		
28	Harrisburg		
<u>INDIANA</u>		<u>KENTUCKY</u>	
1	Gary	1	Covington
2	South Bend	2	Ashland
3	Fort Wayne	3	Lexington
4	Marion	4	Mount Sterling
5	Muncie	5	Louisville
6	Frankfort	6	Hodgenville
7	Terre Haute	7	Danville
8	Indianapolis	8	Hazard
9	Richmond	9	Paducah
10	Vincennes	10	Madisonville
11	Columbus	11	Bowling Green
12	Evansville	12	Somerset
13	New Albany	13	Corbin
		<u>LOUISIANA</u>	
		1	Shreveport
		2	Monroe

Governor Clyde M. Reed correspondence, Federal Census

(3)

SUPERVISORS' DISTRICTS	HEADQUARTERS	SUPERVISORS' DISTRICTS	HEADQUARTERS
<u>LOUISIANA (CONT'D)</u>		<u>MICHIGAN (CONT'D)</u>	
3	Winnsboro	5	Muskogon
4	Natchitoches	6	Bay City
5	Alexandria	7	Grand Rapids
6	Lake Charles	8	Ionia
7	Opolousas	9	Saginaw
8	Baton Rouge	10	Flint
9	Lafayette	11	Bad Axe
10	Donaldsonville	12	Paw Paw
11	New Orleans	13	Lansing
		14	Pontiac
		15	Port Huron
<u>MAINE</u>		16	Kalamazoo
1	Caribou	17	Jackson
2	Augusta	18	Dearborn
3	Bangor	19, 20, 21 and 22	Detroit
4	Auburn		
5	Portland		
		<u>MINNESOTA</u>	
<u>MARYLAND</u>		1	Crookston
1	Cumberland	2	Bemidji
2	Frederick	3	Duluth
3	Bol Air	4	Fergus Falls
4	Baltimore City	5	Little Falls
5	Annapolis	6	Minneapolis
6	Cambridge	7	Minneapolis
		8	St. Paul
		9	Willmar
<u>MASSACHUSETTS</u>		10	Red Wing
1	Pittsfield	11	Slayton
2	Greenfield	12	Mankato
3	Springfield	13	Austin
4	Fitchburg		
5	Lowell	<u>MISSISSIPPI</u>	
6	Lynn	1	Clarksdale
7	Haverhill	2	Holly Springs
8	Worcester	3	Tupelo
9	Newton	4	Greenwood
10	Cambridge	5	West Point
11	Malden	6	Vicksburg
12 & 13	Boston	7	Ackerman
14	Brockton	8	Jackson
15	Fall River	9	Meridian
16	New Bedford	10	Natchez
		11	Hattiesburg
		<u>MISSOURI</u>	
<u>MICHIGAN</u>		1	St. Joseph
1	Manistique	2	Cameron
2	Alpena		
3	Manistee		
4			

Governor Clyde M. Reed correspondence, Federal Census

(4)

SUPERVISORS' DISTRICTS	HEADQUARTERS	SUPERVISORS' DISTRICTS	HEADQUARTERS
<u>MISSOURI (CONT'D)</u>		<u>NEW JERSEY</u>	
3	Chillicothe	1	Dover
4	Hannibal	2	Peterson
5	Kansas City	3	Hackensack
6	Marshall	4	Montclair
7	Warrenton	5	Newark
8 & 9	St. Louis	6	Jersey City
10	Clinton	7	Kearny
11	Springfield	8	Elizabeth
12	Jefferson City	9	Trenton
13	Mountain Grove	10	New Brunswick
14	Farmington	11	Asbury Park
15	Joplin	12	Camden
16	Willow Springs	13	Bridgeton
17	Caruthersville		
<u>MONTANA</u>		<u>NEW MEXICO</u>	
1	Missoula	1	Santa Fe
2	Great Falls	2	Albuquerque
3	Havre	3	Doming
4	Glasgow	4	Roswell
5	Helena		
6	Lewistown	1	Ogdensburg
7	Miles City	2	Oswego
8	Glendive	3	Utica
9	Butte	4	Amsterdam
10	Billings	5	Troy
		6	Niagara Falls
		7	Buffalo
		8	Batavia
		9	Rochester
		10	Geneva
		11	Syracuse
		12	Jamestown
		13	Elmira
		14	Ithaca
		15	Binghamton
		16	Oneonta
		17	Albany
		18	Kingston
		19	Newburgh
		20	White Plains
		21, 22, 23 & 24	New York
		25 & 26	Bronx
		27	Richmond
		28, 29, 30, 31, & 32	Kings
		33, 34, & 35	Queens
		36	Mineola
<u>NEBRASKA</u>			
1	Alliance		
2	O'Neill		
3	Norfolk		
4	North Platte		
5	Kearney		
6	York		
7	Omaha		
8	Lincoln		
9	McCook		
10	Hastings		
11	Beatrice		
<u>NEVADA</u>			
1	Reno		
2	Tonopah		
<u>NEW HAMPSHIRE</u>			
1	Laconia		
2	Concord		
3	Nashua		

Governor Clyde M. Reed correspondence, Federal Census

(5)

SUPERVISORS' DISTRICTS	HEADQUARTERS	SUPERVISORS' DISTRICTS	HEADQUARTERS
<u>NORTH CAROLINA</u>		<u>OKLAHOMA</u>	
1	Winston-Salem	1	Woodward
2	Greensboro	2	Enid
3	Rocky Mount	3	Bartlesville
4	Elizabeth City	4	Chickasha
5	Ashville	5	Oklahoma City
6	Hickory	6	Tulsa
7	Charlotte	7	Muskogee
8	Asheboro	8	Lawton
9	Raleigh	9	Norman
10	New Bern	10	Shawnee
11	Fayetteville	11	Oklmulgee
12	Wilmington	12	McAlester
		13	Durant
<u>NORTH DAKOTA</u>		<u>OREGON</u>	
1	Minot		Oregon City
2	Devils Lake	1	Salem
3	Mandan	2	Portland
4	Jamestown	3	Bend
5	Fargo	4	Pondleton
		5	Eugene
		6	Baker
		7	
<u>OHIO</u>		<u>PENNSYLVANIA</u>	
1	Napoleon		Erie
2	Toledo		Sharon
3	Bowling Green		Da Bois
4	Elyria	1	Williamsport
5	Cleveland Heights	2	New Milford
6 & 7	Cleveland	3	Scranton
8	Ashtabula	4	New Castle
9	Akron	5	Punxsutawney
10	Youngstown	6	Shamokin
11	Lima	7	Wilkes-Barre
12	Marion	8	Easton
13	Newark	9	Pittsburgh
14	Canton	10	McKeos Rocks
15	East Liverpool	11	Greensburg
16	Springfield	12 & 14	Johnstown
17	Columbus	13	Altoona
18	Lancaster	15	Chambersburg
19	Zanesville	16	Harrisburg
20	Cambridge	17	Pottsville
21	Martins Ferry	18	Allentown
22	Hamilton	19	Norristown
23	Dayton	20	Washington
24	Cincinnati	21	Uniontown
25	Hillsboro	22	York
26	Portsmouth	23	
27	Athens	24	
		25	

Governor Clyde M. Reed correspondence, Federal Census

(6)

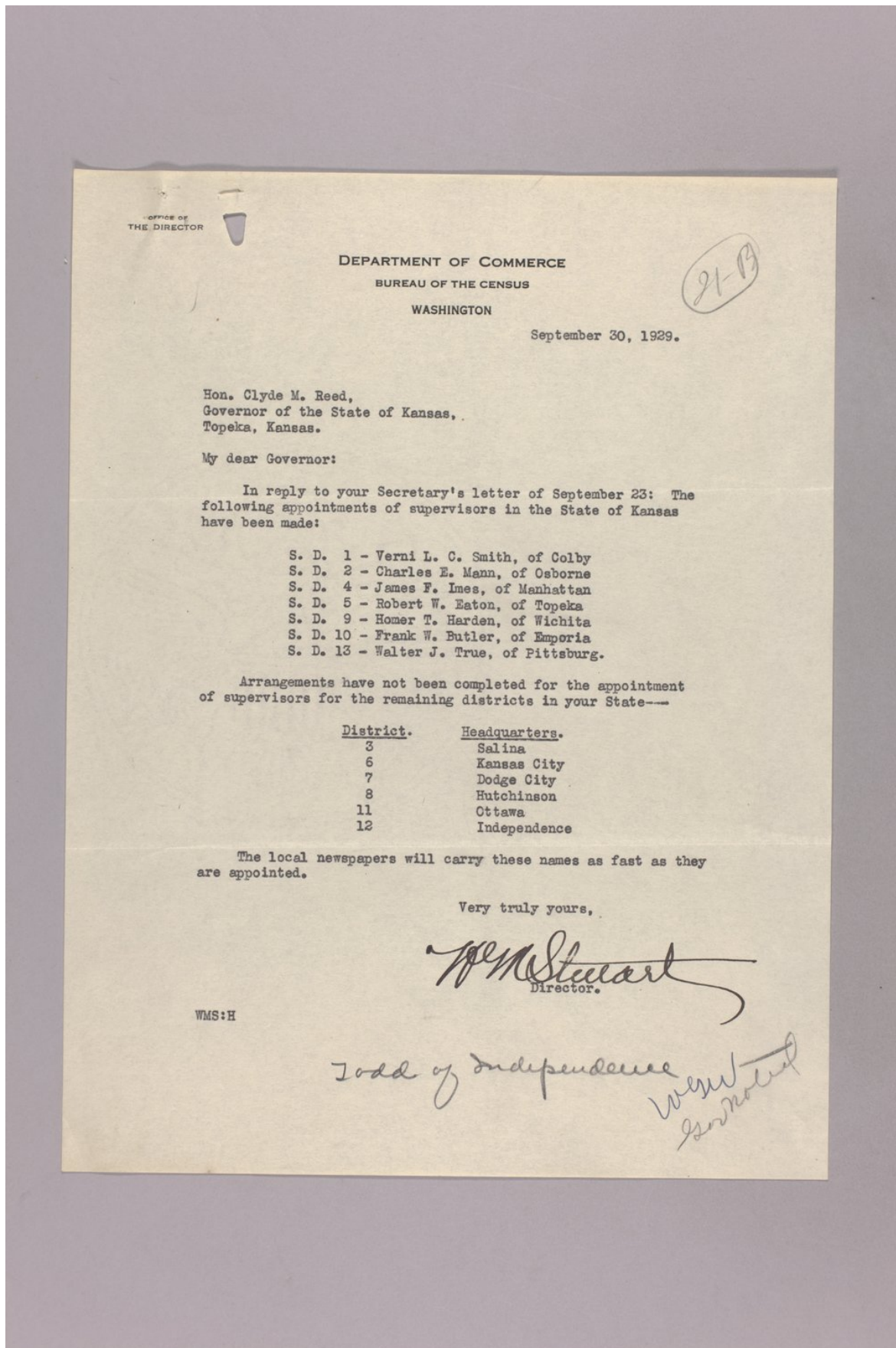
SUPERVISORS' DISTRICTS	HEADQUARTERS	SUPERVISORS' DISTRICTS	HEADQUARTERS
<u>PENNSYLVANIA (CONT'D)</u>		<u>TEXAS</u>	
26	Lancaster	1	Amarillo
27	Chester	2	Plainview
28, 29, 30 & 31	Philadelphia	3	Wichita Falls
		4	Sherman
<u>RHODE ISLAND</u>		5	Paris
1	Warwick	6	Marshall
2	Providence	7	Lubbock
3	Newport	8	Abilene
		9	Fort Worth
<u>SOUTH CAROLINA</u>		10	Dallas
1	Anderson	11	Greenville
2	Greenville	12	Tyler
3	Spartanburg	13	San Angelo
4	Rock Hill	14	Brownwood
5	Marion	15	Hillsboro
6	Greenwood	16	Corsicana
7	Columbia	17	Waco
8	Sumter	18	Palestine
9	Hartsville	19	Lufkin
10	Allendale	20	El Paso
11	Charleston	21	Uvalde
		22	San Antonio
<u>SOUTH DAKOTA</u>		23	Seguin
1	Rapid City	24	Austin
2	Winnipeg	25	Columbus
3	Aberdeen	26	Houston
4	Watertown	27	Galveston
5	Mitchell	28	Victoria
6	Sioux Falls	29	Brownsville
<u>TENNESSEE</u>		<u>UTAH</u>	
1	Dyersburg	1	Ogden
2	Paris	2	Salt Lake City
3	Clarksville	3	Price
4	Nashville	4	Provo
5	Cookeville	5	Richfield
6	Harriman		
7	Knoxville	<u>VERMONT</u>	
8	Johnson City	1	Burlington
9	Memphis	2	Rutland
10	Jackson	3	Randolph
11	Columbia		
12	Tullahoma	<u>VIRGINIA</u>	
13	Chattanooga	1	Winchester
		2	Alexandria
		3	Staunton
		4	Charlottesville

Governor Clyde M. Reed correspondence, Federal Census

(7)

SUPERVISORS' DISTRICTS	HEADQUARTERS	SUPERVISORS' DISTRICTS	HEADQUARTERS
<u>VIRGINIA (CONT'D)</u>		<u>WISCONSIN (CONT'D)</u>	
5	Fredericksburg	14	Racine
6	Richmond		
7	Norton		
8	Pulaski		
9	Roanoke	1	Thermopolis
10	Danville	2	Sheridan
11	Lynchburg	3	Casper
12	Petersburg	4	Rock Springs
13	Newport News	5	Cheyenne
14	Norfolk		
<u>WASHINGTON</u>		<u>WYOMING</u>	
1	Bellingham		
2	Seattle		
3	Everett		
4	Wenatchee		
5	Spokane		
6	Longview		
7	Tacoma		
8	Yakima		
9	Walla Walla		
<u>WEST VIRGINIA</u>			
1	Wheeling		
2	Fairmont		
3	Martinsburg		
4	Parkersburg		
5	Clarksburg		
6	Huntington		
7	Sutton		
8	Elkins		
9	Charleston		
10	Logan		
11	Bluefield		
<u>WISCONSIN</u>			
1	Superior		
2	Ashland		
3	Chippewa Falls		
4	Eau Claire		
5	Wausau		
6	Green Bay		
7	La Crosse		
8	Oshkosh		
9	Watertown		
10 & 11	Milwaukee		
12	Dodgeville		
13	Madison		

Governor Clyde M. Reed correspondence, Federal Census



Governor Clyde M. Reed correspondence, Federal Census

*U. S. Census
Bureau*

September 23, 1929

United States Bureau of Census
Washington, D. C.

Gentlemen:

Governor Reed will be pleased to
have the names of Census Supervisors who have been
selected in Kansas.

I am

Thanking you for this information,

Very truly yours,

WGW:DT

Secretary to the Governor

Governor Clyde M. Reed correspondence, Federal Census

September 23, 1929

Mr. R. W. Eaton
305 Columbian Building
Topeka, Kansas

Dear Mr. Eaton:

This is to acknowledge receipt of your letter under date of September 20 addressed to Governor Clyde M. Reed, suggesting contact with the various Supervisors in Kansas. In compliance with your suggestion we are writing the United States Bureau of Census for the names of the Supervisors in this State.

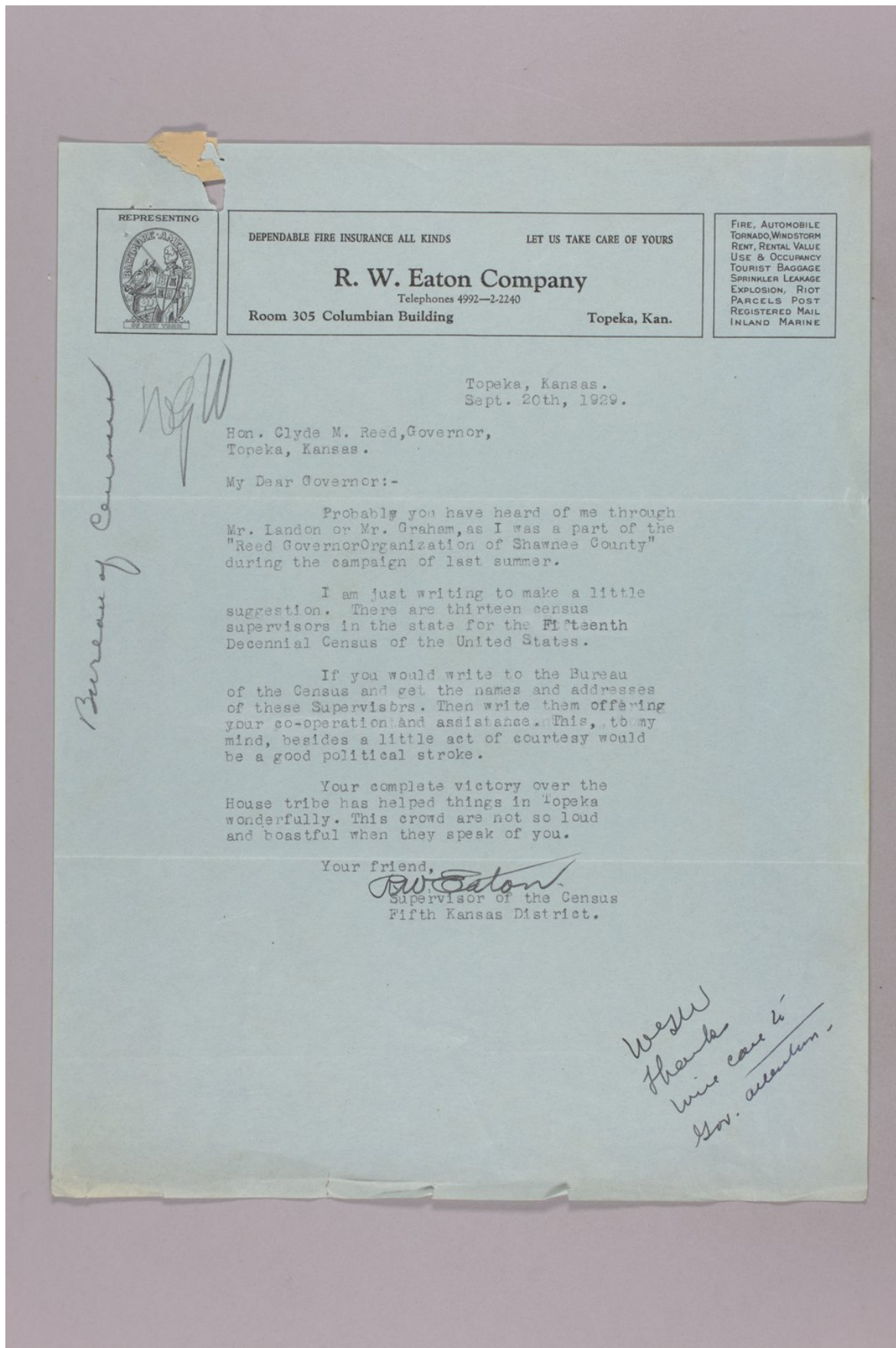
The Governor wishes to thank you for your friendly letter and to assure you that he will be glad to hear from you from time to time on matters of public interest.

Very truly yours

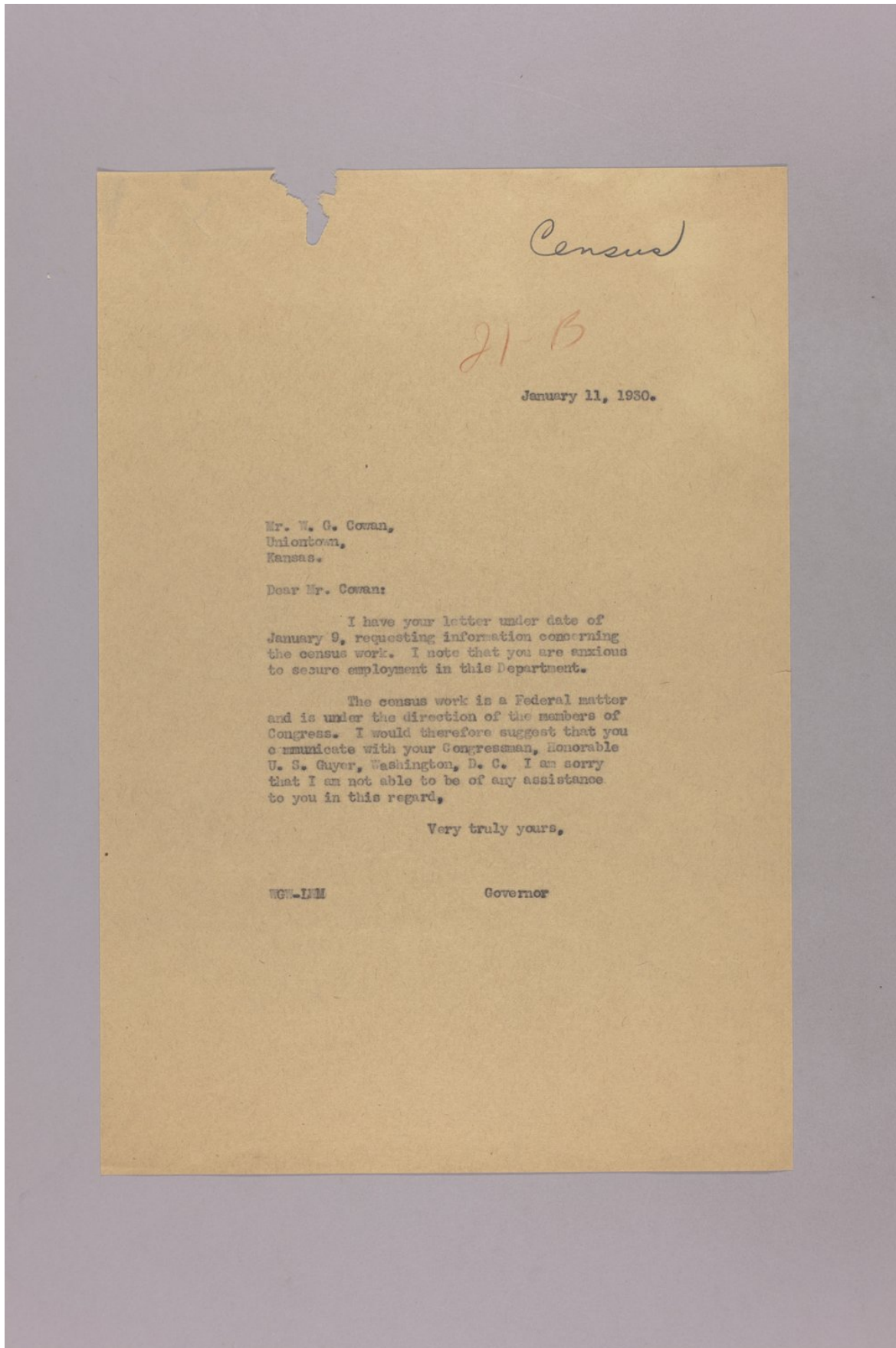
WGW:DT

Secretary to the Governor

Governor Clyde M. Reed correspondence, Federal Census



Governor Clyde M. Reed correspondence, Federal Census



Governor Clyde M. Reed correspondence, Federal Census

Uniontown Kans
Jan 9th 1930

Mr Clyde M. Reed
Topeka Kansas
Dear Governor

I am writing you for
information in regard to U.S.
Sensus work I see by the paper
something about it but don't
explain any particulars
are they appointed if so by
whom? and how does a person
have to qualify? I am anxious
for something in that line and
could give any kind of reference
by petition or otherwise.

I want to make application
if I am eligible The Cowan Family
is Kansas people of long standing &
of Republican stock. Respectfully
W. S. Cowan