

Hesston sales manual

Section 3, Pages 61 - 90

This sales manual from 1976 includes product brochures, pricing and diagrams for individual merchandise sold by the Hesston Corporation. This publication funded by the National Historical Publications and Records Commission through the Kansas State Historical Records Advisory Board.

Creator: Hesston Corporation

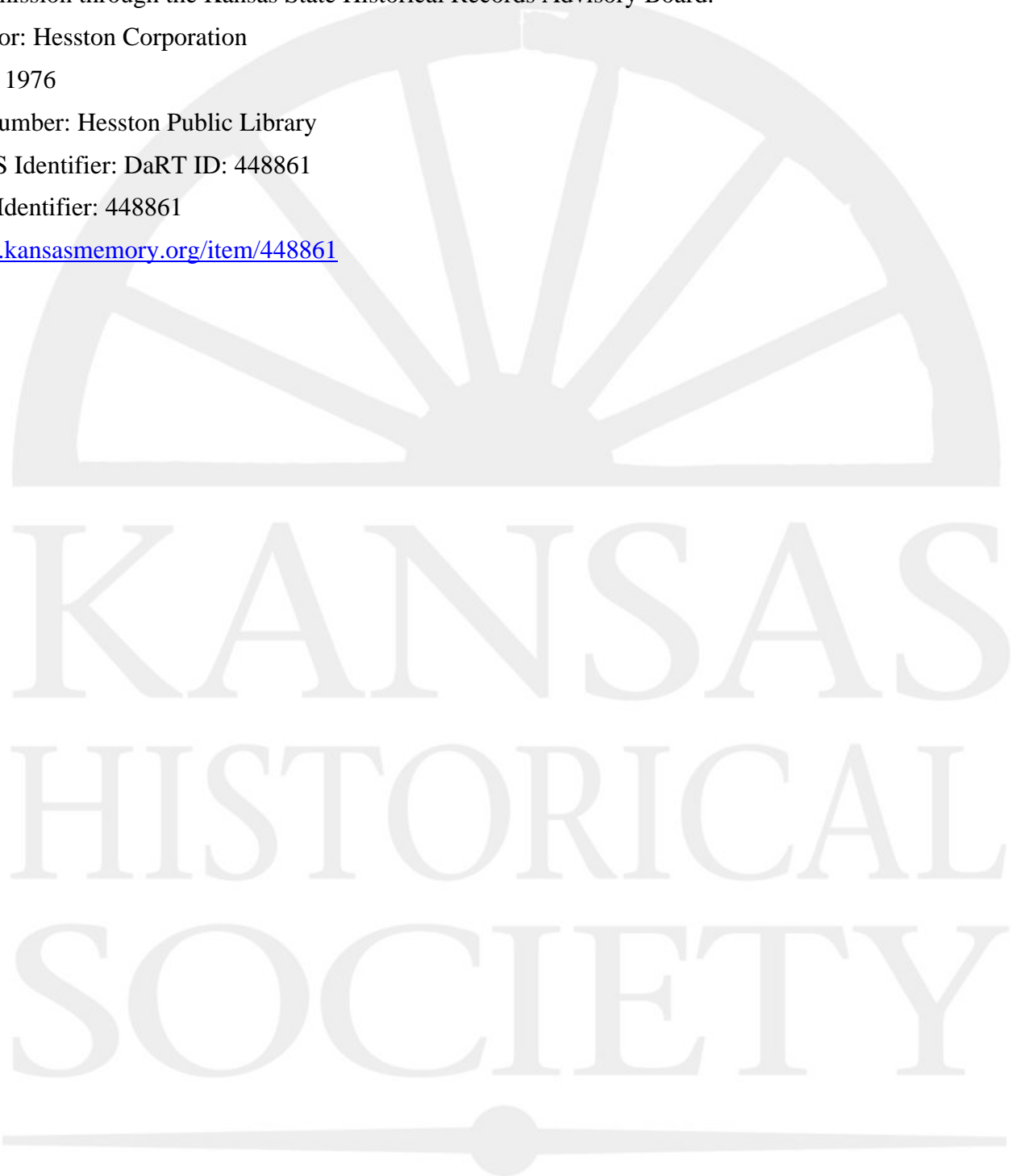
Date: 1976

Callnumber: Hesston Public Library

KSHS Identifier: DaRT ID: 448861

Item Identifier: 448861

www.kansasmemory.org/item/448861



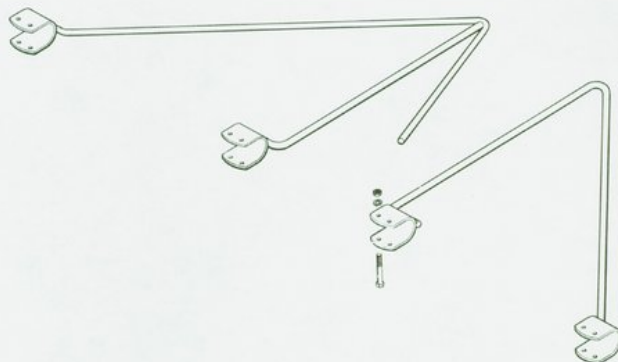
Hesston sales manual

PT-7 & PT-10 EXTRA EQUIPMENT

Whole Goods
Order Number

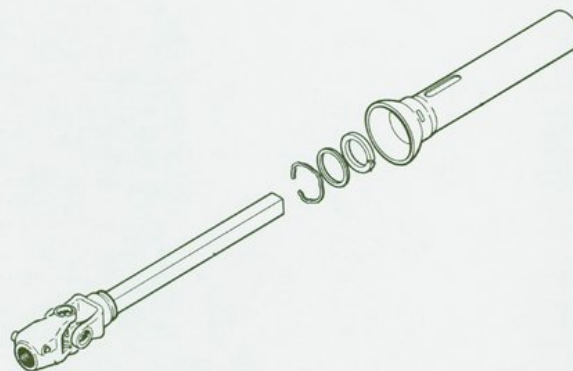
0003 CROP DIVIDER KIT

Recommended for all tall crops.



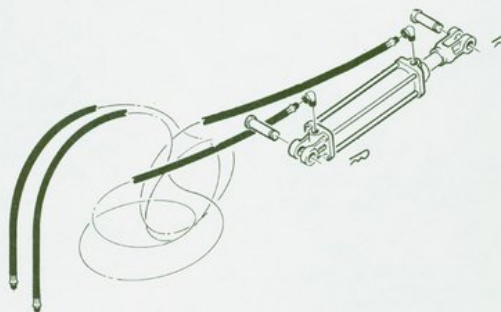
0004 1000 RPM KIT

Front half of PTO assembly and instructions for changing gearbox.



0058 HYDRAULIC LIFT CYLINDER WITH HOSES

Or use any standard single or double acting cylinder with 8" stroke and pin-to-pin dimensions of 20-1/4" closed.



Hesston Pull-Type Mower Conditioner Model PT-7



First with a better way.

HESSTON
FARM EQUIPMENT

PT-7
Mower Conditioner

Hesston Mower-Conditioner Model PT-7

Windrows or swaths with direct feed hay flow through a unique conditioner

The Hesston PT-7 is a compact, pull-type windrower that offers direct-feed hay flow from the sickle through 86-inch conditioner rolls to a swath or windrow. A fluted steel roll and a grooved rubber roll give a gentle, positive cracking action to the crop as it passes through in a thin, uniform blanket. The cracking effect allows moisture to evaporate, while nutrient-laden solids are retained in the plant pulp. In leafy crops, the

stems dry at about the same rate as the leaves, so it is possible to stack or bale before brittleness increases leaf loss. The premium quality Hesstonized Hay that results from this conditioning action is far superior to that produced by the harsh action of intermeshing rubber rolls that mangle the crop; squeeze out plant juices; and expose plant pulp to sun, wind, rain and humidity;

- Designed as a two-piece unit so the main frame actually carries and **pushes** the header. Results in improved radial and vertical flotation, elimination of side draft, and better windrow formation!
- Equal tire-to-tire weight distribution helps eliminate side draft!
- Small diameter drum reel is adjustable horizontally and vertically, has adjustable tine action and reel speed that let you do an outstanding job in all crop conditions!
- One chain/one belt completes the drive system to simplify maintenance and operation!
- Tongue adjusts to three field positions and one roading position.
- Enclosed drive line eliminates any possibility of material wrapping on shaft!
- Drum reel with internal eccentric control is quieter and requires less maintenance than cam track controlled reels!
- Reel slip clutch protects reel and hay conditioner from foreign object damage!
- Skid shoes adjust for correct cutting height.
- Lean bar adjusts to set up crop correctly for sickle.
- One conveniently located adjustment equalizes the tension at each end of the conditioner rolls!
- Adjustable forming shields and fluffing shield put crop in high fluffy windrows or swaths. Width adjusts easily to tractor wheelbase to prevent driving on cut crop.
- Parallel linkage keeps guard angle constant at any cutting height!
- Choice of sickle guards: Standard Tie Guard® double sickle guards and optional Stub or Conventional guards.
- In-line drive from main driveshaft and right angle gearbox power header drive without specially angled gears.

SPECIFICATIONS

Width of Cut87"
Overall Width.....114 1/4"
Weight, Lbs. (Approx.)2600
SICKLE
Speed.....1600 spm
Stroke.....3 1/16"
Guards.....Forged Steel
REEL
No. of Bats.....4
Spring Steel Tines.....7" long, 4" spacing
Diameter.....31"
HEADER
Type.....Direct Feed
Range.....-4" to +16"
Minimum Cutting Height.....1"

TIRES.....5.90 x 15 (2)
CONDITIONER
Width.....86"
Upper Roll Dia.6 1/2"
Lower Roll Dia.7 1/2"
STANDARD EQUIPMENT: Jack Stand. Skid shoes.
Use standard ASAE 8" stroke cylinder.
Cylinder and hoses not included.
EXTRA AND/OR OPTIONAL EQUIPMENT:
Crop divider Kit. 1000 rpm Kit. Conventional Guards.
Stub Guards.

Specifications are subject to change without notice.

Tie Guard is a registered trademark of Hesston Corporation

HW-7T-775 Litho in U.S.A.

HESSTON
CORPORATION

Hesston Division
Hesston, Kansas 67062

PT-7
Mower Conditioner



HESSTON WINDROWER EQUIPMENT

F.O.B. Hesston, Kansas

LATIN AMERICA

PT-7 PULL-TYPE MOWER CONDITIONER

STANDARD EQUIPMENT

MAIN FRAME & CHASSIS - All welded box frame with 2 - 5.90 x 15 implement tires and wheels. Adjustable hitch with support jack and shielded PTO drive. Gear box for 540 rpm PTO. Hydraulic header lift - less cylinder and hoses. Transport lock. Adjustable windrow forming shields with full width adjustable fluffer shields.

HEADER - "Straight-through" header with all metal four-bat reel with easy adjustment of "tine action". Adjustable skid shoes, flotation springs, 1 - chrome section sickle. Adjustable conditioner roll spacing and tension.

WIDTH OF CUT - 87"

LENGTH OF CONDITIONER ROLLS - 86"

Order Number	Description	Approx. Weight	List Price	Sugg. Retail
-----------------	-------------	-------------------	------------	-----------------

ONE ITEM FROM EACH BOX MUST BE SPECIFIED

BASE MACHINE

0001	PT-7	2740 lbs.	\$3565
------	------------	-----------	--------	-------

GUARD OPTIONS

A1	Model PT-7 with Tie Guards	In Base
A2	Model PT-7 with Stub Guards	In Base

PT-7 EXTRA EQUIPMENT

0003	Crop Divider Kit	22 lbs.	\$ 33
0004	1000 RPM Kit	15	64
0058	Hydraulic Lift Cylinder with Hoses	35	175
504183	Tool Kit		128 Net Price	

ORDER FROM PARTS

6455752 Decal Kit

Note: Order SMV emblem through Service Parts.

Revision 1 6-1

Prices Subject to Change Without Notice

December 27, 1974

HAY HANDLING EQUIPMENT

● HESSTON StakHand Hay Handling Equipment Model 60-A

StakHand 60-A



First with a better way.



HESSTON StakHand Model 60-A

With rotary paddle pickup for stacking hay and stover or folding tine pickup for the gentler handling of alfalfa!

The Model 60-A is the BIG HESSTON StakHand for high capacity one-man stacking of hay or stover. One man and a 60-A can put as much as 100 tons of hay a day in up to 6-ton compressed Hesston HayStaks. 60-A stacks of hay are about one half the density of bales. Hay picked up with the 60-A is blown up the spout and into an interwoven pattern that is compressed into tight, weather-resistant stacks. They require no taxable storage structures and can serve as self

60-A With
Finger Tine Pickup



feeders. In some areas, hay can be put up with a slightly higher moisture content than possible with baled hay. The companion StakMover and its StakFeeder[®] or 30/60 StakFork[™] attachment completes a one-man hay system from field to feeding.

- Compression (to about half the density of bales) is spread evenly with press arms synchronized by intermeshing gears. No slave cylinders are required.
- Hydraulics lift pickup for roading.
- Load is balanced over wheels so that only 10% of the weight is on the tractor drawbar.
- Optional flotation tires reduce compaction and provide better support in irrigated fields and moist meadows.

Flail Paddle Pickup Model

- For hay and *standing or lodged* stover.
- Hydraulic 2-way manual selector valve mounts on tractor and directs flow from pickup and press operation to operating bed tilt and tailgate for unloading stack.
- Two flotation springs protect pickup when operating in rough fields. Pickup height controlled by gauge roller.
- New oscillating fin kit (available as an extra) spreads crop more evenly from side to side in the wagon. This helps eliminate crop buildup in the center of the wagon which can cause soft sides and unstable stacks. Improves stack quality in all conditions.

Folding Tine Pickup Model

- For hay or *windrowed* stover.
- Pickup rides on dual flotation springs and full width roller.
- Folding tines across six foot pickup deliver crop to a cross feed auger.
- Blower throws crop up the spout and into the compression wagon.
- Oscillating spout moves automatically from side to side to interweave the crop and distribute it evenly.

SPECIFICATIONS

Bed size—8' wide x 20' long
Overall length—29'2" With flail pickup
32'4" With folding tine pickup
Overall width—11'7" With standard tires
12'3" With flotation tires
Overall height—Compression chamber open—17'6"
Compression chamber closed—
Spout up 15'5"
Compression chamber closed—
Spout tipped 12'9"
Compression chamber closed—
Spout tipped & front grid tipped 11'6"
Weight with folding tine pickup—13,800 lbs.
Weight with rotary paddle pickup—13,500 lbs.
Compression stroke—7'
Compression cycle—20-30 seconds
Capacity—up to 6 tons
Tires—Two 18.4 x 26 (10 ply)

Tractor requirement—80 hp minimum with tine pickup.
90 hp minimum with paddle pickup
PTO 1000 (preferred) or 540 rpm.
Dual, remote control hydraulic system.

Options

FOLDING TINE PICKUP

Width—6'
Blower size—5' (8-blade)
Spout—Oscillates side to side.
Lift—Hydraulic

FLAIL PADDLE PICKUP

Width—5'
Spout—Fixed side to side position
Lift—Hydraulic

EXTRA AND/OR OPTIONAL EQUIPMENT

Flotation Tires	Folding Tine Pickup
Hydraulic Spout Lowering Kit	Stover Kit
Paddle Pickup	Spout Fin Kit (Oscillating)

StakHand and StakFeeder are registered trademarks of Hesston Corporation

SH-1T-775 Litho in U.S.A.

HESSTON
CORPORATION

Hesston Division
Hesston, Kansas 67062



HESSTON STAKHANDS

F.O.B. Hesston, Kansas

LATIN AMERICA

MODEL 60A STAKHAND

STANDARD EQUIPMENT

Full width gauge roller	Ball and clevis hitch
Unloading chain and drag bar for unloading	Hydraulic-mechanical press with 7' stroke
PTO drive for 1000 RPM *	Tractor requirements - 80 hp minimum with two remote hydraulic control valves
Two 18.4 x 26 10-ply tires	Paddle pickup 5' wide (lift cylinder standard)
Parking jack	Retractable tine pickup 6' wide (optional) (Lift cylinder not furnished)
Electric unloading clutch	

Order Number	Description	Approx. Weight	List Price	Sugg. Retail
--------------	-------------	----------------	------------	--------------

ONE ITEM FROM EACH BOX MUST BE SPECIFIED

BASE MACHINE

2222	StakHand 60A Complete	13,500 lbs.	\$18,525
------	-----------------------------	-------------	----------	-------

PICKUP

A1	Paddle Pickup	In Base
A2	Retractable Tine Pickup (Less Lift Cylinder) ..Add	300 lbs. \$ 2310

WHEELS AND TIRES

B1	Two 18.4 x 26 10-Ply Tires and Tubes	In Base
B2	Two 23.5 x 26 10-Ply Tires and Tubes	150 lbs. \$ 1150

ATTACHMENTS FOR FIELD INSTALLATION

2223	Paddle Pickup	4000 lbs.	\$5815
2224	Retractable Tine Pickup	4800	8125
2221	Hydraulic Cylinder and Hose Kit (for finger pickup only)	40	145
2225	Hydraulic Spout Control Kit (Flail Pickup)	60	251
2226	Hydraulic Spout Control Kit (Tine Pickup)	60	251
2207	Sharp Stover Paddle Kit	100	318
2262	Oscillating Kit (Paddle Units Only).....		335
504167	Tool Kit		150 Net Price	

ORDER FROM PARTS

6298525 Decal Kit

* To convert to 540 rpm PTO, order yoke No. 845180 from Service Parts.

Revision 2 7-1

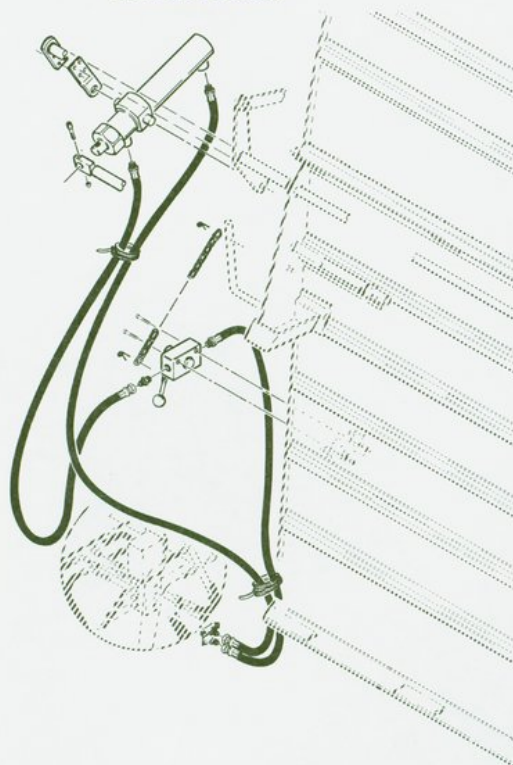
Prices Subject to Change Without Notice

March 27, 1975

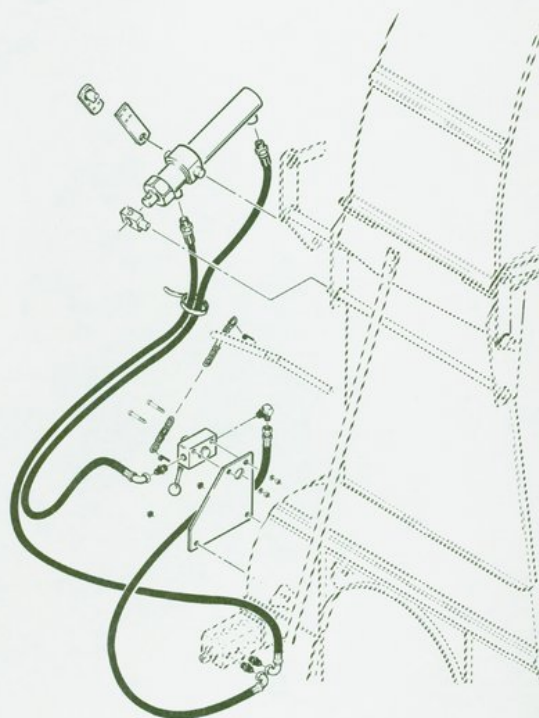
STAKHAND 60A ATTACHMENTS FOR FIELD INSTALLATION

Whole Goods
Order Number

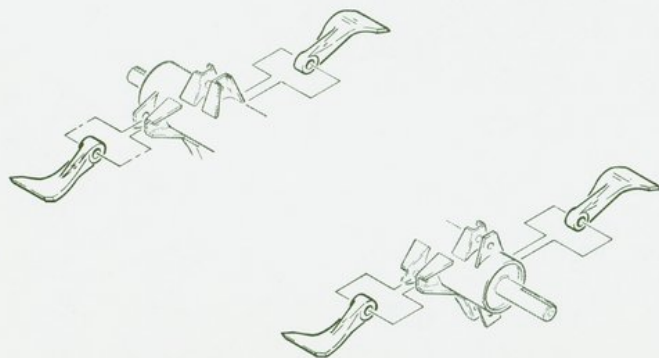
2275 HYDRAULIC SPOUT CONTROL KIT -
PADDLE PICKUP



2226 HYDRAULIC SPOUT CONTROL KIT -
TINE PICKUP



2249 SHARP STOVER PADDLE KIT - PADDLE
PICKUP ONLY



● Hesston StakMover 60-A Farm & Ranch Model

StakMover 60-A
Farm & Ranch

First with a better way.



Hesston Farm & Ranch StakMover — Model 60-A

The StakMover 60-A lets one man handle six-ton HESSTON StakHand® 60 and 60-A stacks or two StakHand 30 and 30-A stacks . . . from his tractor!

With the StakMover 60-A, one man can move compressed Hesston HayStaks where and when he wants to. This increases the speed of the StakHand because stacks can be unloaded as they're completed in the field ... the StakHand can go on building new stacks ... and the StakMover can move the stacks later on. A StakFeeder® or 30/60 StakFork™ attachment for the mover completes the 60-A system and makes one-man haying a reality from field to feeding.



- Hydraulic loading-unloading chain drive operates off tractor's hydraulic system to provide dependable power and simple, smooth, trouble-free performance. No U-joints are required.
- Bed tilts hydraulically to facilitate loading and unloading.
- Tandem walking beam axle gives stacks a smooth ride over uneven terrain.
- Optional tongue and bed extension is available for handling two model 30-A stacks. (Consists of 78-inch extension to front of main frame, extended tongue, heavier tongue jack, hydraulic plumbing, brackets and other hardware.)
- Optional powered crawler tracks (2) at rear of unit propel the StakMover when picking up or unloading stacks — operate at same ground speed as drag chains. Provide extra flotation and traction for adverse field and weather conditions.
- Optional electrically controlled brake system includes self-contained electrical emergency brake system.
- Optional close-up panels can be installed between main frame beams to prevent the loss of hay when moving fresh stacks.
- All the options above are exclusive with the Hesston StakMover 60-A Farm & Ranch model.

SPECIFICATIONS

Dimensions and weight:

Bed size — 8' wide x 21½' long
Overall length — 26'
Weight — 3350 lbs.

Hydraulic equipment:

Bed tilt power — 2 standard
ASAE 8" cylinders, 3" bore (extra)
Loading chain drive — standard
hydraulic motor operates from tractor's hydraulic system

Capacity:

6 tons

Tires:

Four 11L x 15 (10 ply)

Tractor requirement:

80 hp
1500 psi minimum
2 remote cylinder controls
10 gpm or more pump volume

Loading and unloading:

By 5 loading rails

Extra equipment:

Power pack — gasoline powered to operate the hydraulic system when no other hydraulic source is available
Tongue and bed extension
Powered crawler tracks
Brakes
Close-up panels

Specifications subject to change without notice

StakHand and StakFeeder are registered trademarks of the Hesston Corporation

SH-2T-775 Litho in U.S.A.

HESSTON
CORPORATION

Hesston Division
Hesston, Kansas 67062



HESSTON STAKHANDS

F.O.B. Logan, Utah

LATIN AMERICA

MODEL 60A STAKMOVER (Ranch Model)

STANDARD EQUIPMENT

Ball hitch - straight tongue	Tractor Requirements: 60 hp minimum with 2 remote hydraulic control valves; 1500 psi minimum with 12 gpm or more oil flow
Four 11L x 15 10-ply tires	
Hydraulic motor drive for loading and unloading	Skid shoes for rear of beams
Five individual loading beams with chains	Bed 8' wide x 21-1/2' long - 6 ton capacity
Bed tilt by 2-standard 8" stroke ASAE cylinders (not furnished)	Beam close-up over wheels only

Order Number	Description	Approx. Weight	List Price	Sugg. Retail
-----------------	-------------	-------------------	------------	-----------------

ONE ITEM FROM EACH BOX MUST BE SPECIFIED

BASE MACHINE

2231	StakMover 60A Ranch Model Complete (Less Tilt Cylinder)	3350 lbs.	\$5595
------	--	-----------	--------	-------

TONGUES

A1	Straight Tongue	IN BASE
A3	Bed Extension & Tongue (Straight Tongue Only) Add 960	\$1300

SKID SHOES & TRACKS

B1	Skid Shoes (Available with A1 Only)	IN BASE
B2	Crawler Tracks	600 lbs. \$2020

ATTACHMENTS FOR FIELD INSTALLATION

2233	Tilt Cylinder & Hose Kit	60 lbs.	\$ 273
2234	Brake Kit (Two Wheels)	95	391
	(For four-wheel brakes, Order 2 of No. 2234 & 1 of No. 2203)			
2236	Gooseneck Tongue	550	1135
2235	Crawler Track Kit.....	600	1825
2243	Power Pack 25 hp Engine F.O.B. Hesston, Kansas..	150	1000
2239	Power Pack Without Engine F.O.B. Hesston, Kansas	150	750
2203	Brake Control	2	56
2237	Bed Extension & Tongue (Straight Tongue Only)....	1360	1665
*2241	Beam Close-Up Kit (Less Fenders)	426	440

2 Fenders, Part No.6275937 Must Be Ordered Thru
Service Parts For 1973 Model Movers

ORDER FROM PARTS

6268452	Decal Kit
---------	-----------

NOTE: SF60 Will not adapt to SM60A

Revision 1 8-1

Prices Subject to Change Without Notice

December 27, 1974

STAKMOVER 60A ATTACHMENTS FOR FIELD INSTALLATION (RANCH MODEL)

Whole Goods
Order Number

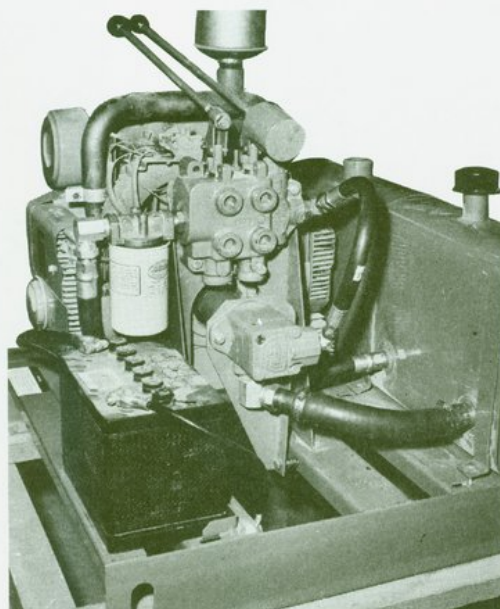
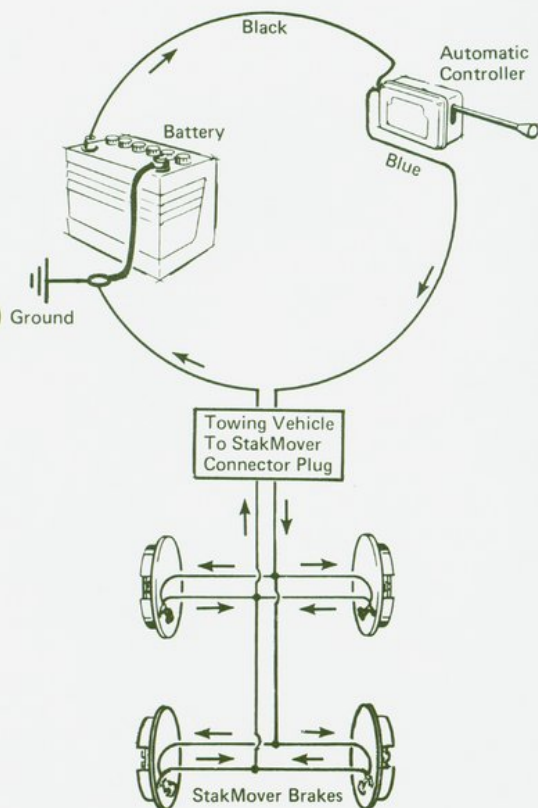
2234 BRAKE KIT - 2 WHEELS ONLY

2239 POWER PACK WITHOUT ENGINE

2203 BRAKE CONTROL

2243 ENGINE FOR 2239

Order two of 2234 for 4 wheel brakes
Order 2203 Brake Control



STAKMOVER 60A ATTACHMENTS FOR FIELD INSTALLATION (RANCH MODEL)

Whole Goods
Order Number

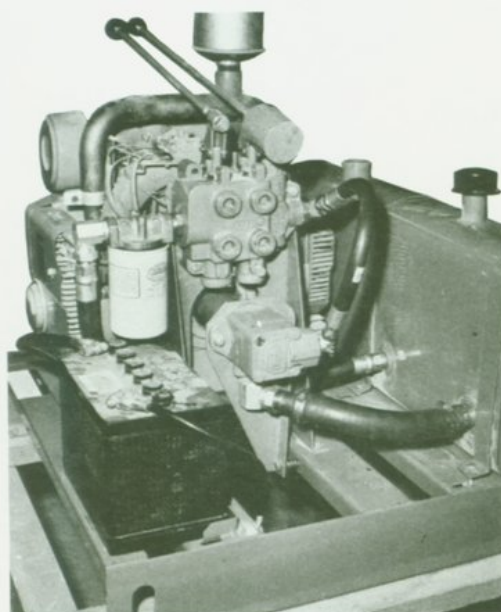
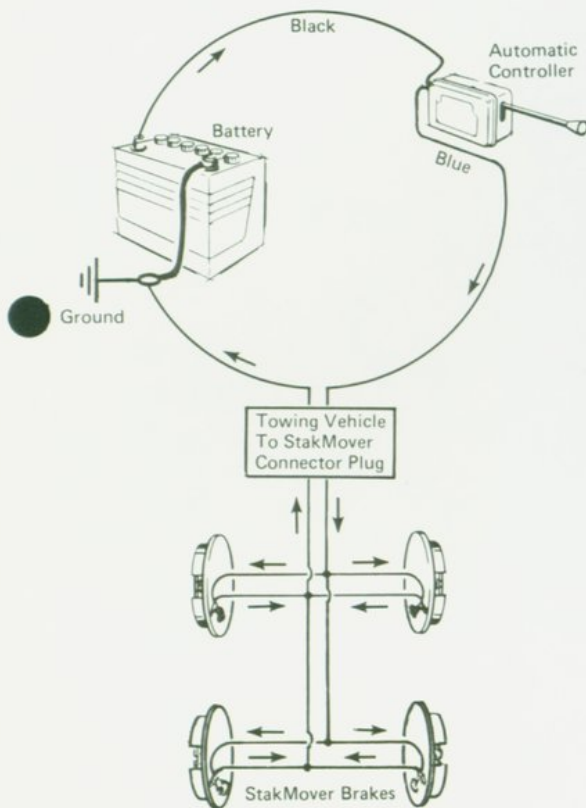
2234 BRAKE KIT - 2 WHEELS ONLY

2239 POWER PACK WITHOUT ENGINE

2203 BRAKE CONTROL

2243 ENGINE FOR 2239

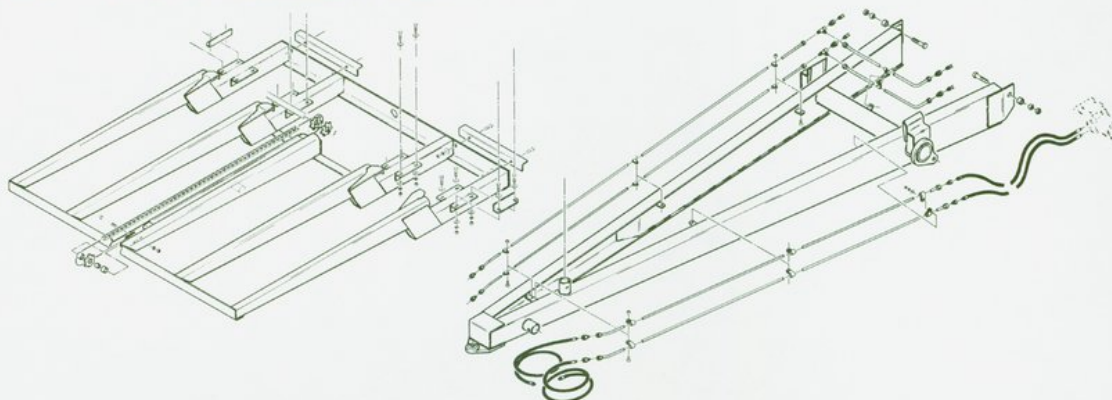
Order two of 2234 for 4 wheel brakes
Order 2203 Brake Control



STAKMOVER 60A ATTACHMENTS FOR FIELD INSTALLATION (RANCH MODEL)

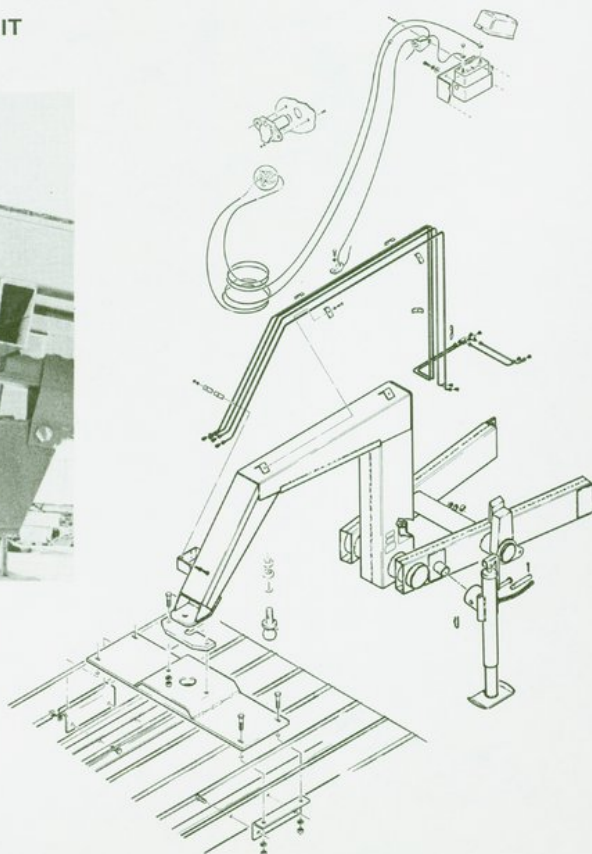
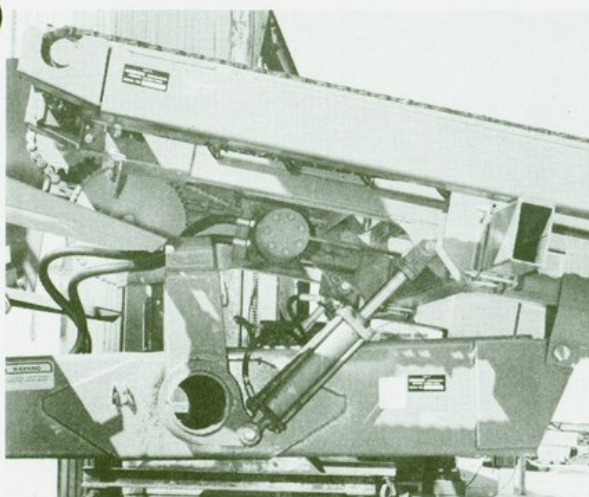
Whole Goods
Order Number

2237 BED EXTENSION AND TONGUE



2236 GOOSENECK TONGUE

2233 HYDRAULIC CYLINDER AND HOSE KIT

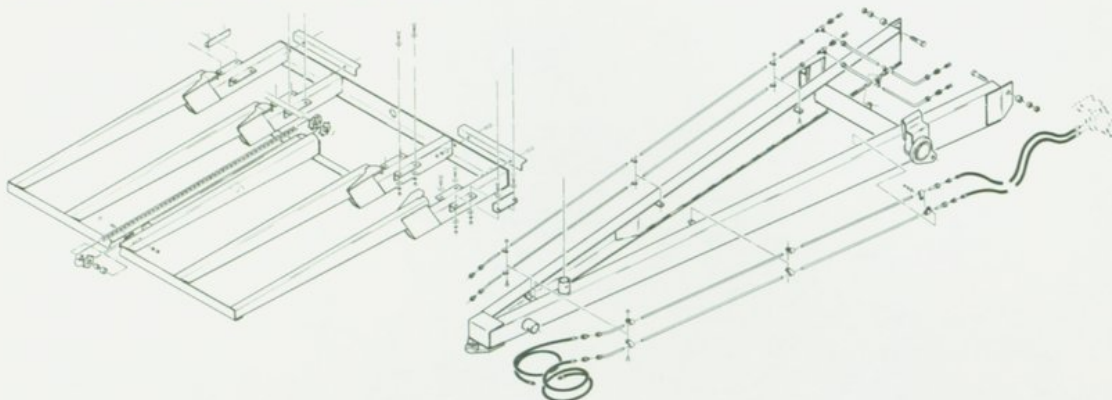




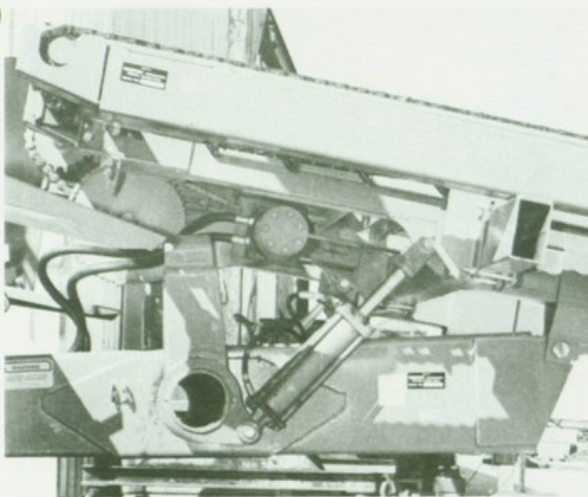
STAKMOVER 60A ATTACHMENTS FOR FIELD INSTALLATION (RANCH MODEL)

Whole Goods
Order Number

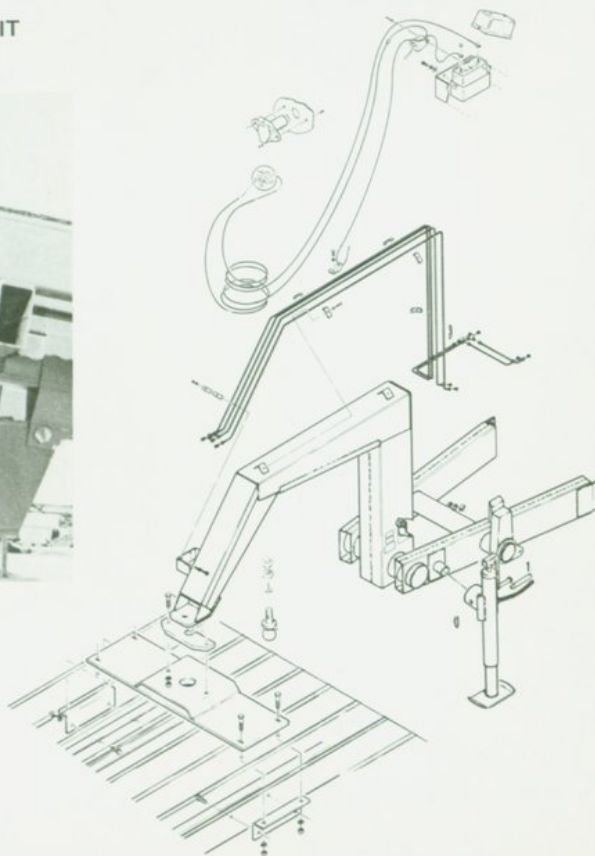
2237 BED EXTENSION AND TONGUE



2233 HYDRAULIC CYLINDER AND HOSE KIT
KIT



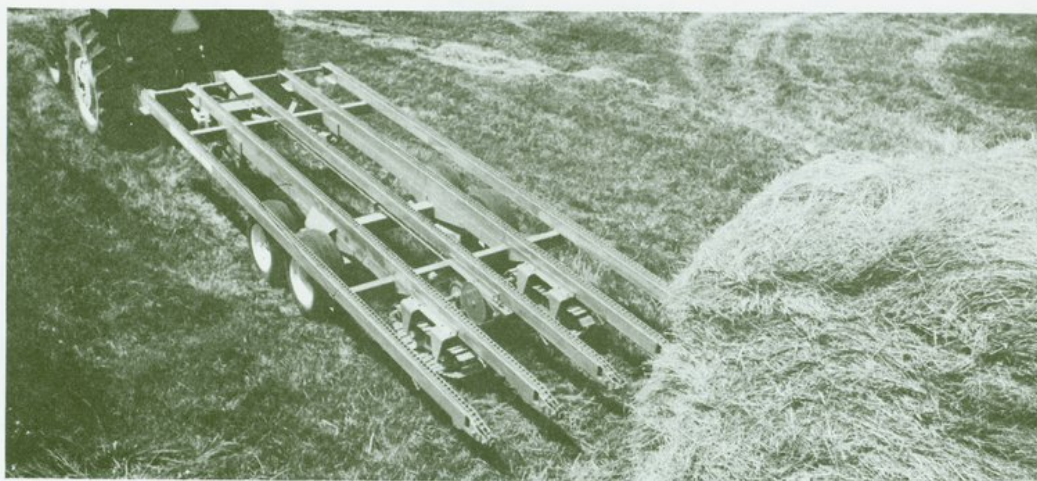
2236 GOOSENECK TONGUE



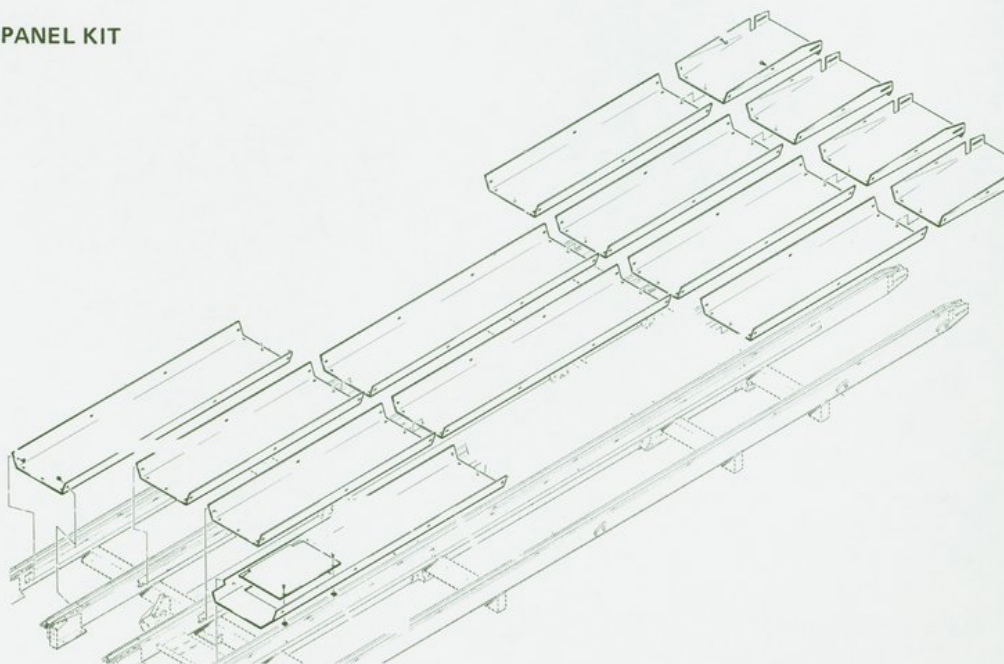
STAKMOVER 60A ATTACHMENTS FOR FIELD INSTALLATION (RANCH MODEL)

Whole Goods
Order Number

2283 CRAWLER TRACK KIT



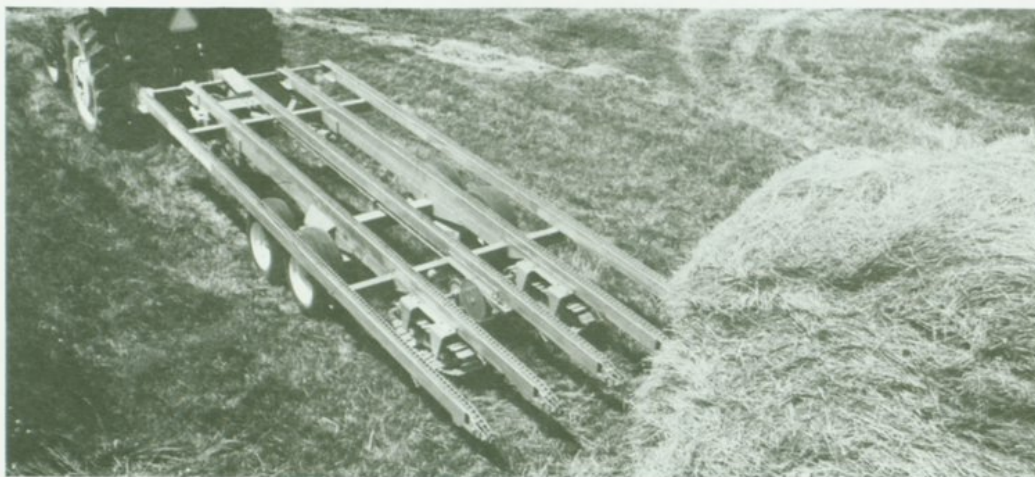
2284 PANEL KIT



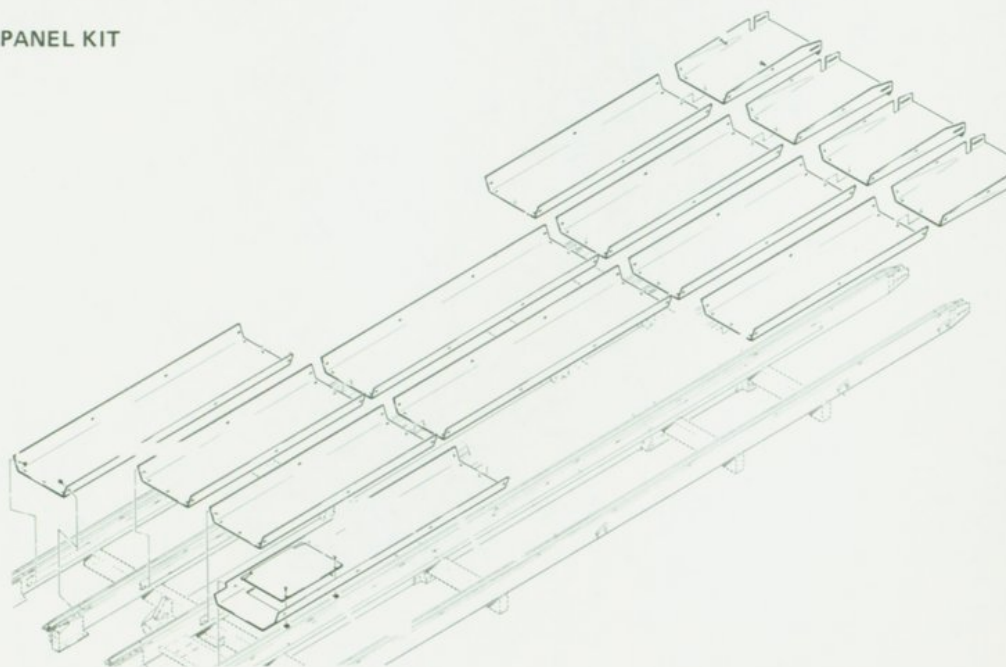
STAKMOVER 60A ATTACHMENTS FOR FIELD INSTALLATION (RANCH MODEL)

Whole Goods
Order Number

2283 CRAWLER TRACK KIT



2284 PANEL KIT



● Hesston StakMover 60-A Highway & Truck/Trailer Models

StakMover 60-A
Highway



First with a better way.

HESSTON
FARM EQUIPMENT

Hesston Highway & Truck/Trailer StakMover — Model 60-A

Choice of 3 StakMover models lets you tailor the equipment to short or long hauls!

1. The Gooseneck Highway Model (shown on front side) is completely equipped for over-the-road hauling . . . including lights. The gooseneck design lets operator hook unit to pickup truck as a fifth wheel type trailer. Electrically controlled brake system includes a self-contained electrical emergency brake system and is standard on all three models.

2. The Highway Mover with straight tongue (not shown) is available for use with tractors and trucks. It can be used to haul one HESSTON StakHand® 60-A stack — or with tongue and bed extension option — two StakHand 30-A stacks.

3. The Truck/Trailer Mover (shown at right). Designed for one-man hauling of two StakHand 60-A stacks over longer distances on the highway. Option consists of a StakMover bed mounted on a truck and a highway model with straight tongue which is pulled behind the truck. It should be noted that the truck is not part of the option and may be used for other applications with bed removed.



Gooseneck and straight tongue models

- Hydraulic loading chain drive operates from tractor or power pack hydraulic system. Provides dependable loading and unloading in less than 60-seconds.
- Two crawler tracks at rear of unit power the StakMover when loading and unloading stacks. Operate at same ground speed as the loader chains.
- Tandem walking beam axle gives stacks a smooth ride over rough ground.
- Bed tilts hydraulically to facilitate loading and unloading.
- Close-up panels prevent loss of hay in fresh stacks — especially over-the-road. Not needed when moving settled stacks nor recommended when stack bottoms are wet or muddy.

- Optional power pack is gasoline powered. Furnishes power to operate both movers when no other hydraulic source is available.

Truck/Trailer model

- Truck completely separate from option. Bed can be taken off truck for using truck elsewhere.
- Lights, brakes, tires and crawler tracks are all standard and suited for highway use.
- Loads and unloads each stack in about 60 seconds.
- Tie-down loops secure stacks with ropes for windy highway conditions. (rope not furnished)
- To complete the unit, the power pack option should be ordered as well as the bed assembly and telescoping hitch.

SPECIFICATIONS

Gooseneck (standard) and straight tongue (optional) models

DIMENSIONS & WEIGHT:

Bed size — 8' x 21½'
Overall height — 76" to top of gooseneck
Overall length — 29'10"
Weight — 4300 lbs.

HYDRAULIC EQUIPMENT:

Loading Chain Drive
Powered Crawler Tracks (2)
Bed tilt power — 2 standard ASAE 8" cylinders, 3" bore (extra)
Power Pack (extra)

Specifications subject to change without notice.

StakHand is a registered trademark of the Hesston Corporation

CAPACITY: 6 tons

TIRES: Four 12 x 16.5 (10 ply)

BRAKES: Standard

LOADING & UNLOADING:

By 5 loading beams
Close-up panels for beams (standard over the wheels, extra between beams)

OTHER EXTRA EQUIPMENT:

Tongue and bed extensions (for handling two 30-A stacks with the straight tongue only)
Tongue weight (with extension only) — 850 lbs. (no load); 2540 lbs. (loaded)

Truck/Trailer model (truck needed to operate this option satisfactorily should be as listed below or the equivalent):
Chevrolet model CE67303 with 138 inches cab to axle, GVW 25,000 lbs., model A1180T frame (F06 frame reinforcement), 10 x 20 12-ply tires front and rear, H63 two-speed axle (18,500 pounds), standard front axle, 203" wheel base
Power Pack engine is double-ended crankshaft model and should be ordered with Power Pack

HESSTON
CORPORATION

Hesston Division
Hesston, Kansas 67062



HESSTON STAKHANDS
F.O.B. Logan, Utah

LATIN AMERICA

MODEL 60A STAKMOVER (Highway Model)

STANDARD EQUIPMENT

Ball hitch	Hydraulic motor drive for loading and unloading
Gooseneck tongue	Five individual loading beams with chains
4 - over the road tires	Bed tilt by 2-standard ASAE 8" stroke cylinders (not furnished)
4 - wheel brakes	Hydraulic Requirements: 2 remote control valves for 2-way cylinders; 1500 psi minimum with 12 gpm or more oil flow
Lights	
Power Tracks	
Bed 8' wide x 21-1/2' long - 6 ton capacity	Beam close up over wheels only

Order Number	Description	Approx. Weight	List Price	Sugg. Retail
--------------	-------------	----------------	------------	--------------

ONE ITEM FROM EACH BOX MUST BE SPECIFIED

BASE MACHINE

2232	StakMover 60A Highway Model Complete (Less tilt cylinder)	4300 lbs.	\$9300
------	--	-----------	--------	-------

TONGUES

A1	Gooseneck Tongue	IN BASE
A2	Straight Tongue	Deduct 150 lbs.	\$ 620
A3	Bed & Tongue Extension	Add 810	680

ATTACHMENTS FOR FIELD INSTALLATION

2240	Straight tongue (can be installed at factory for set-up charge)	450 lbs.	\$ 545
2243	Power Pack 25 hp Engine F.O.B. Hesston, Kansas ..	150	1000
2239	Power Pack Less Engine and Battery (25 hp Min. Engine Required) F.O.B. Hesston, Kansas ..	150	750
2237	Bed and Tongue Extension (Straight Tongue Only) ..	1360	1665
2233	Tilt Cylinder and Hose Kit	60	273
2241	Beam Close-Up Kit (Less Fenders)	426	440

ORDER FROM PARTS

6458202	Decal Kit
---------	-----------

NOTE: SF60 will not adapt to SM60A.

Revision 1 8-3

Prices Subject to Change Without Notice

December 27, 1974



HESSTON STAKHANDS

F.O.B. Logan, Utah

LATIN AMERICA

MODEL 60A STAKMOVER (Truck Bed & Power Pack)

STANDARD EQUIPMENT

Truck bed with individual loading chains

Clamps for bolting to truck chassis

Complete with hydraulic motor to drive loading chains

Telescoping hitch assembly, hydraulic cylinder included

Plumbing for hydraulics for bed & SM60A pulled behind

Beam close-up panels

NOTE: MUST HAVE HIGHWAY SM60A WITH STRAIGHT TONGUE OPTION TO TOW BEHIND TRUCK (Order from Highway SM60A Price List).

Order Number	Description	Approx. Weight	List Price	Sugg. Retail
--------------	-------------	----------------	------------	--------------

ONE ITEM FROM EACH BOX MUST BE SPECIFIED

BASE MACHINE

2254	Truck Bed Assembly (with telescoping hitch)	3365 lbs.	\$5090
------	---	-----------	--------	-------

POWER PACK

2255	Power Pack less Engine (F.O.B. Hesston, Kansas) ...	450 lbs.	\$1440
------	---	----------	--------	-------

POWER PACK ENGINE

2243	Power Pack Engine (F.O.B. Hesston, Kansas)	150 lbs.	\$1000
------	--	----------	--------	-------

The truck you will need to operate this unit satisfactorily is as follows:

A Chevrolet Model CE67303 with 138" cab to axle, GVW 25,000 pounds, model A1180T frame (FO6 frame reinforcement), 10 x 20 12-ply tires front & rear, H63 two speed axle (18,500 pounds) standard front axle, wheel base 203 inches.

The truck used should be the above or equal, and other makes can be used provided they are equivalent to the above specs.

ORDER FROM PARTS

6452379	Decal Kit
---------	-----------

Revision 1 8-5

Prices Subject to Change Without Notice

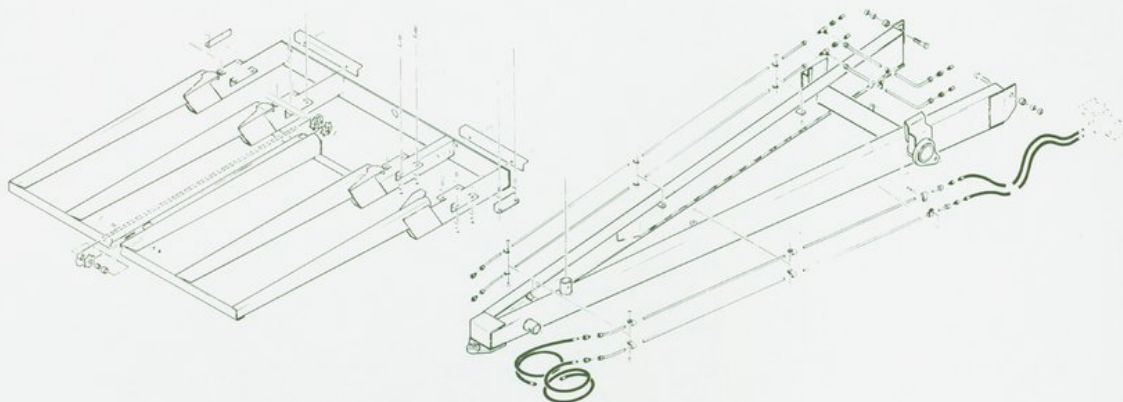
December 27, 1974

Hesston sales manual

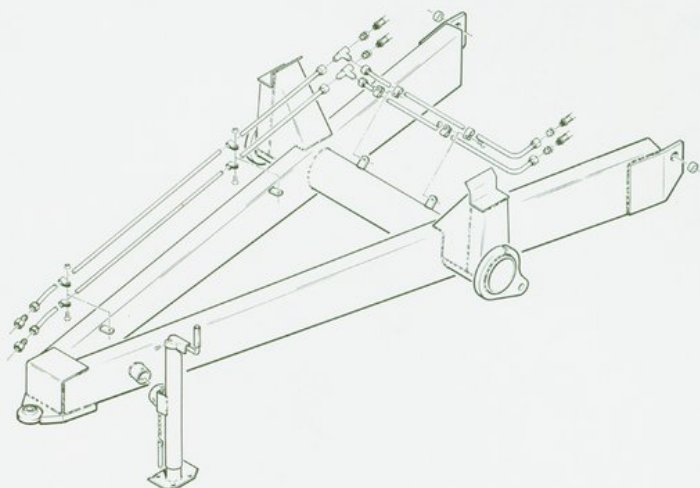
STAKMOVER 60A ATTACHMENTS FOR FIELD INSTALLATION (HIGHWAY MODEL)

Whole Goods
Order Number

2237 BED EXTENSION AND TONGUE



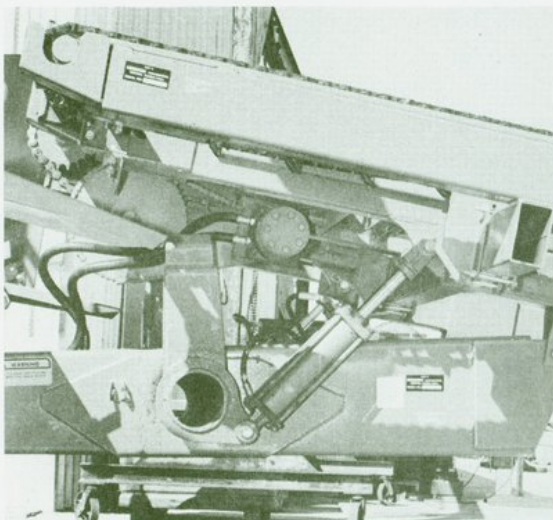
2240 STRAIGHT TONGUE



STAKMOVER 60A ATTACHMENTS FOR FIELD INSTALLATION (HIGHWAY MODEL)

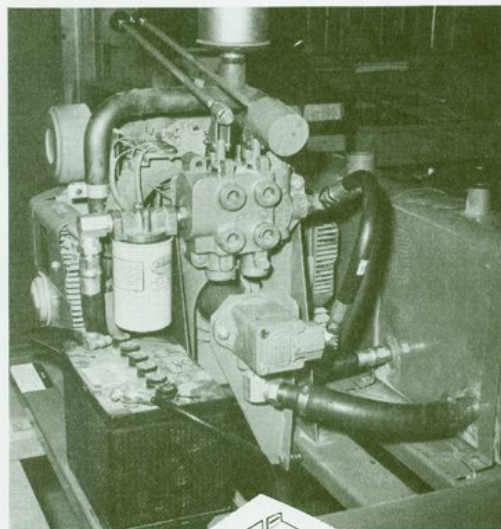
Whole Goods
Order Number

2233 HYDRAULIC CYLINDER AND HOSE
KIT

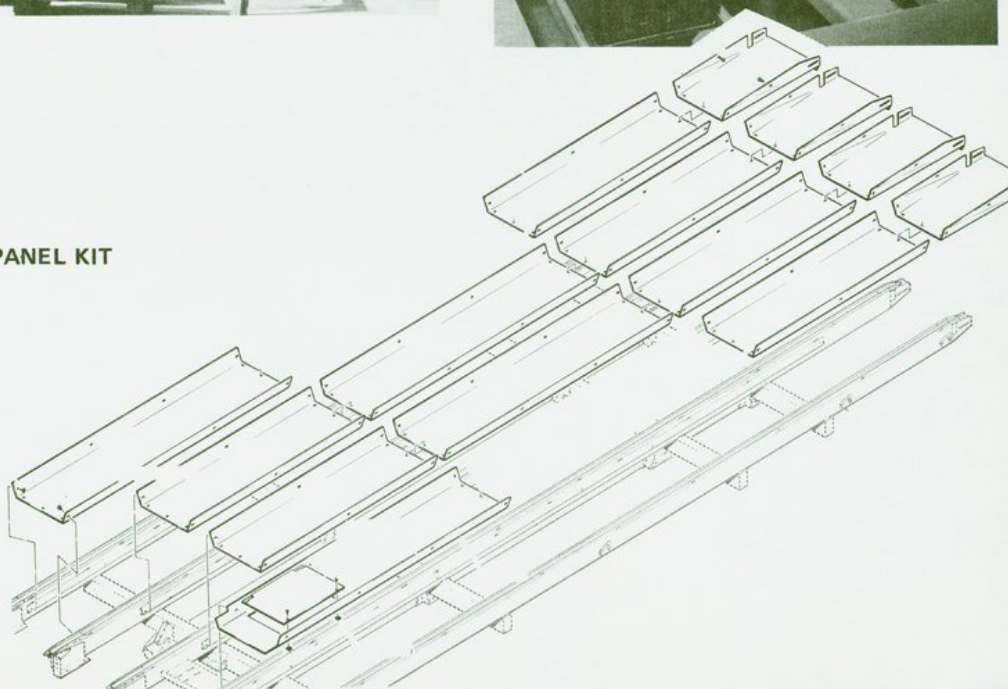


2239 POWER PACK WITHOUT ENGINE

2243 ENGINE FOR 2239



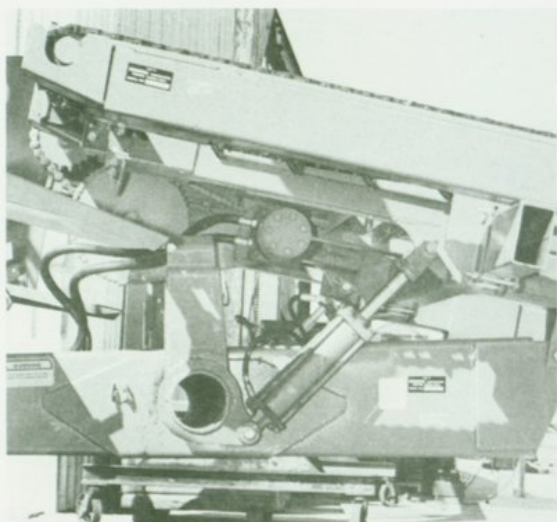
2284 PANEL KIT



STAKMOVER 60A ATTACHMENTS FOR FIELD INSTALLATION (HIGHWAY MODEL)

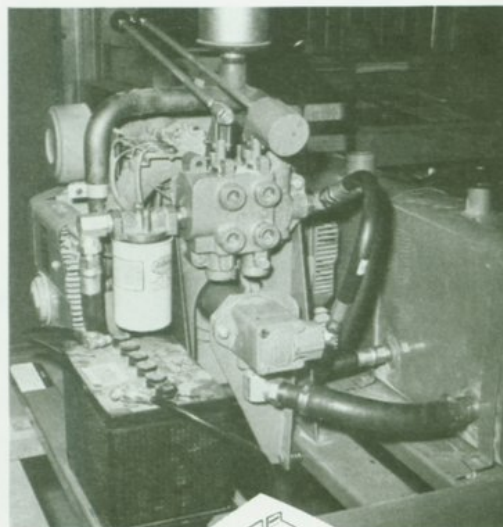
Whole Goods
Order Number

2233 HYDRAULIC CYLINDER AND HOSE
KIT

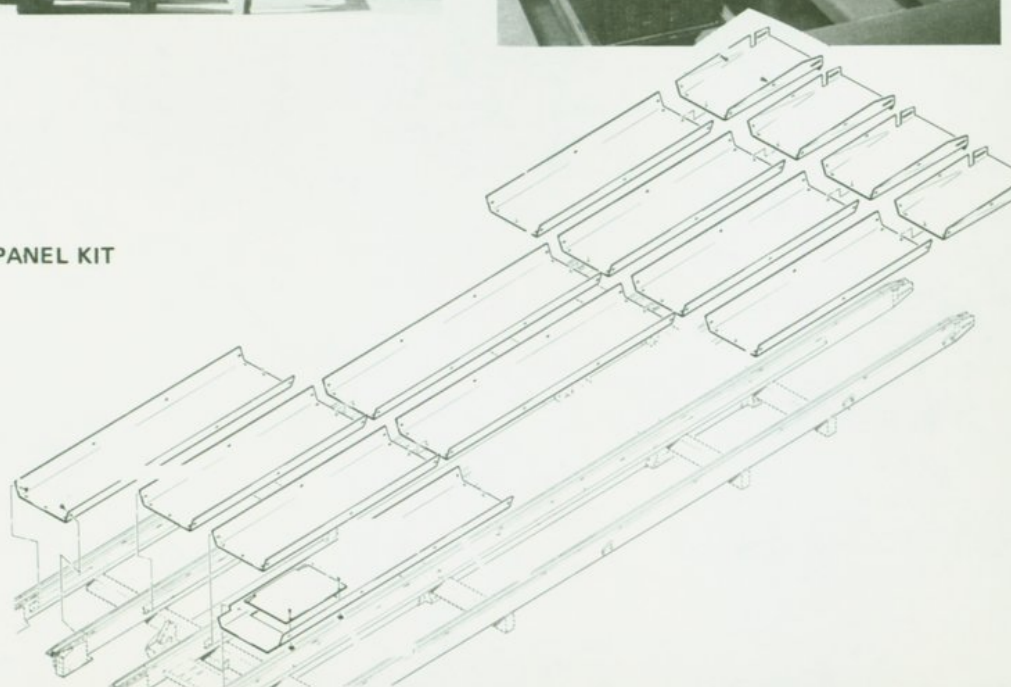


2239 POWER PACK WITHOUT ENGINE

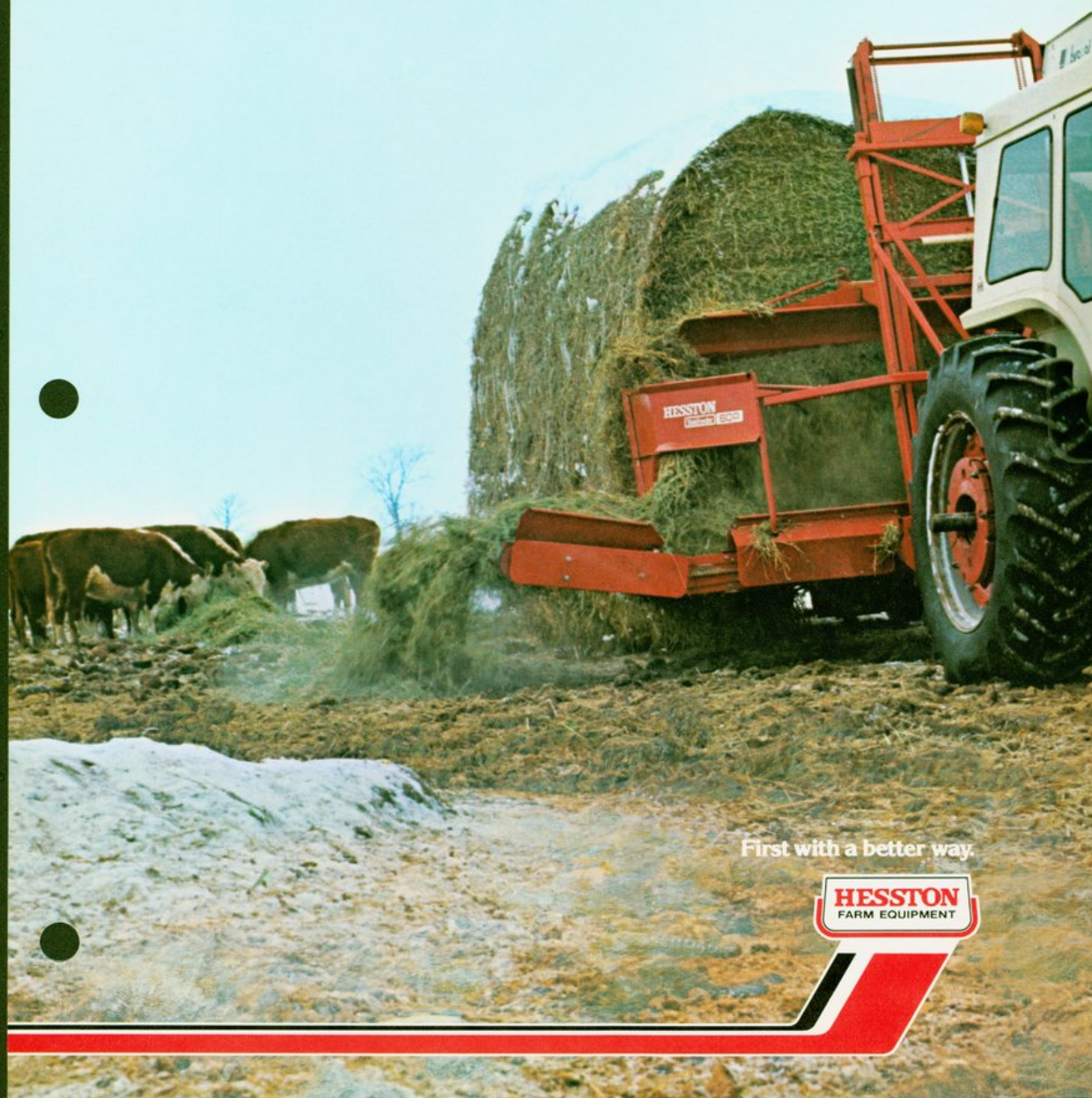
2243 ENGINE FOR 2239



2284 PANEL KIT



Hesston StakFeeder[®] Model 60-A



First with a better way.



Hesston StakFeeder Attachment Model 60-A

An attachment for the Hesston Farm & Ranch StakMover 60-A. Lets one man feed a 6-ton compressed Hesston HayStak without leaving his tractor seat!

Hesston's StakFeeder 60-A ... the best way to feed hay or stover with one man and a minimum amount of waste! With the StakFeeder 60-A attachment mounted on the StakMover 60-A, one man can range feed cattle or feed the stacks into feed bunks and various pieces of processing equipment ... quickly and easily. Stacks are simply loaded on the StakMover 60-A with Feeder attachment in the usual way, then —

upon arrival where the stacks are to be fed — the hydraulically driven sickle starts the feeding operation. As each slice is fed to the conveyor, loading chains move the stack forward so the next slice can be made. It's all so easy! The new StakFeeder 60-A has all of the popular performance features previously offered on the StakFeeder 60 ... plus many design improvements.

- Wheel bumper guards protect tongue assembly and hydraulic parts on the tongue if tractor is turned too short!
- Redesigned safety shields offer more durability and reliability!
- Has self-contained hydraulic drive system which operates from the tractor's PTO!
- Hydraulically driven sickle!
- 11-foot cutting height allows the slicing and feeding of tall StakHand® 60-A stacks!
- One man can load and feed all or any part of a 6-ton Hesston HayStak in approximately 20 minutes!
- Cuts off up to an 8" thick slice per cycle.
- Popular **right hand** side conveyor discharge!
- **Shorter, stronger conveyor extension** is now raised and lowered hydraulically. (Standard 8" cylinder required though not furnished.)
- Does not interfere with the operation of the StakMover. StakMover can be used for moving stacks even with the StakFeeder attached!
- Can be used on Highway model StakMover with straight tongue (when used with tractor only)!

SPECIFICATIONS

DIMENSIONS & WEIGHT:

Weight — 3,500 lbs.
Weight on drawbar — 1,770 lbs. (no load on mover)
Height — 13'

CUTTER BAR:

Width — 11'
Sickle speed — 600 cpm
Angle to stack — 15°
Guards — Double forged stub type
Sickle sections — smooth hard faced

DRIVES:

Sickle — hydraulic belt drive
Conveyor — belt and chain
Mast — hydraulic and chain

MAST: (three sections)

Actuated — cylinder and roller chain
Cutting height — 11'

CONVEYOR:

Width — 36"
Extension — 36" (extra)
Length — 11'
Delivery — right hand

TRACTOR REQUIREMENTS:

60 hp minimum — 1000 rpm PTO

Specifications subject to change without notice.

StakFeeder and StakHand are registered trademarks of the Hesston Corporation

SH-4T-775 Litho in U.S.A.

HESSTON
CORPORATION

Hesston Division
Hesston, Kansas 67062



HESSTON STAKHANDS

F.O.B. Hesston, Kansas

LATIN AMERICA

MODEL 60A STAKFEEDER

This machine is an attachment or companion machine to the Hesston StakMover 60A. See Stak-Mover 60A price list to complete a StakMover and StakFeeder 60A system.

STANDARD EQUIPMENT

Special StakMover 60A tongue with ball hitch
(straight tongue only)

Parking jack

Three-piece telescoping mast

Cutterbar 11' wide special

Hydraulic motor drive for sickle

Tractor requirements - 60 hp min. with
1000 rpm PTO with 2 remote controls;
1500 psi min. pressure and pump volume of
12 gpm or more

Order Number	Description	Approx Weight	List Price	Sugg. Retail
-----------------	-------------	------------------	------------	-----------------

ONE ITEM FROM EACH BOX MUST BE SPECIFIED

BASE MACHINE

2252	StakFeeder 60A Complete	3250 lbs.	\$6030 ¹
------	-------------------------------	-----------	---------------------	-------

ATTACHMENTS FOR FIELD INSTALLATION

2253	*Conveyor Extension Bundle (Less Hyd. Cyl.)..... (Required for Bunk Feeding)	200 lbs.	\$ 468
------	---	----------	--------	-------

7073711	**Hydraulic Cylinder for Conveyor Extension			
---------	---	--	--	--

(Hoses are in Conveyor Ext. Bundle)

*Requires Std. ASAE 8" Stroke Cyl. (not furnished)
**Order from Service Parts.

HOSES AND CYLINDERS FOR TILTING STAKMOVER

Note: See StakMover 60A Price List.

NOTE: SF60A will not adapt to SM60.

ORDER FROM PARTS

6450779	Decal Kit
---------	-----------

Revision 1 9-1

Prices Subject to Change Without Notice

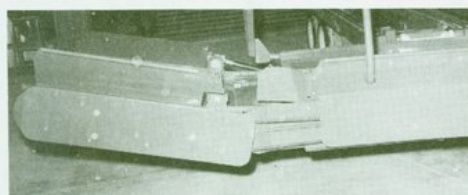
December 27, 1974

STAKFEEDER 60A EXTRA EQUIPMENT

Whole Goods
Order Number

2253 CONVEYOR EXTENSION KIT

This kit can be used for filling bunks or elevating the hay into a silo recutter blower. It is raised and lowered hydraulically.



STAKFEEDER 60A EXTRA EQUIPMENT

Whole Goods
Order Number

2253 CONVEYOR EXTENSION KIT

This kit can be used for filling bunks or elevating the hay into a silo recutter blower. It is raised and lowered hydraulically.

