

Curranville mining camp, Crawford County, Kansas

Photographs of Curranville, once located approximately 12 miles east of Girard in Crawford County, Kansas. Curranville was incorporated in 1906 and had its own post office from 1905 to 1915. Photographs include images of a street scene, a residence and the public school.

Date: Between 1905 and 1930

Callnumber: Miners Hall 00033

KSHS Identifier: DaRT ID: 448128

Item Identifier: 448128

www.kansasmemory.org/item/448128



Curranville mining camp, Crawford County, Kansas

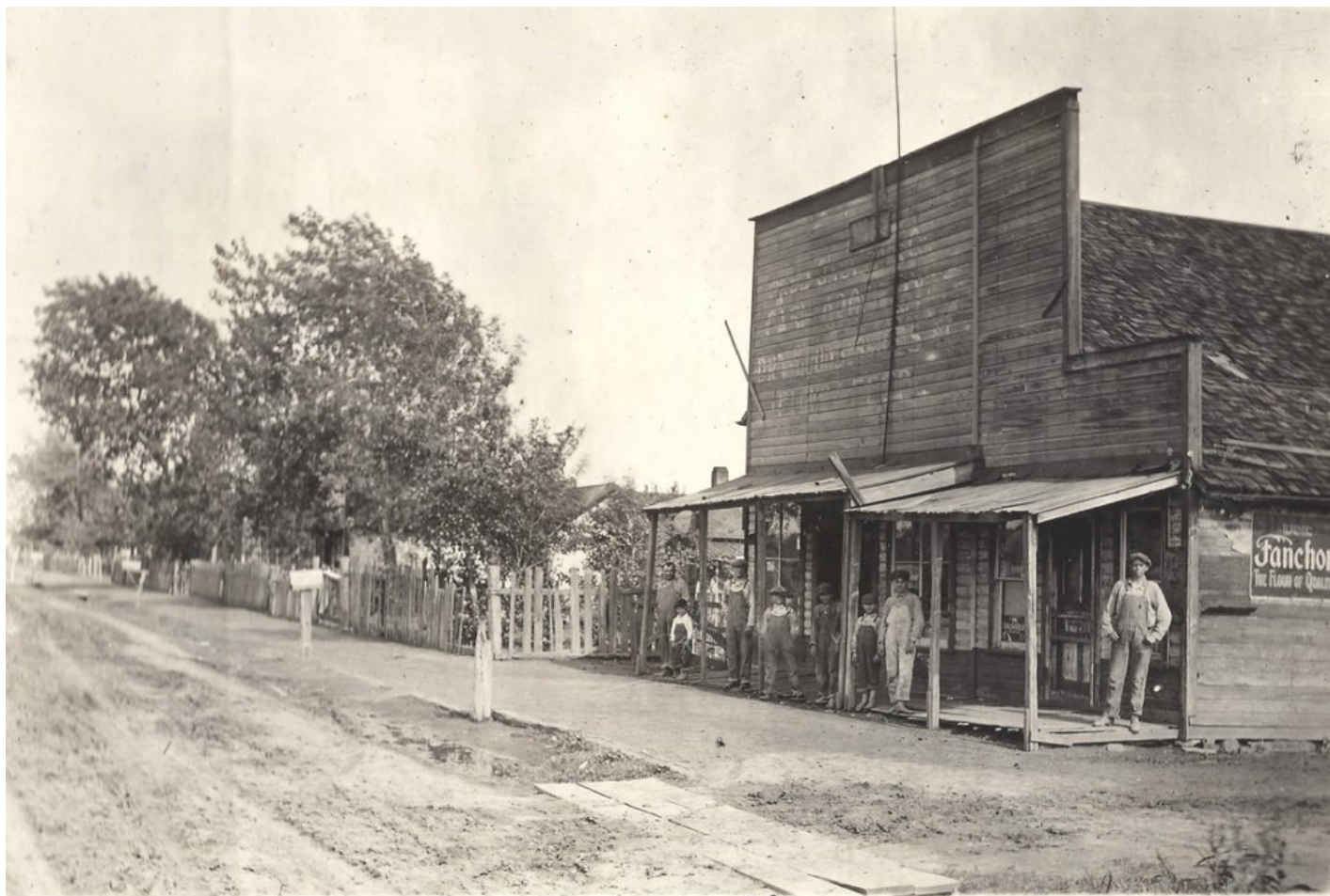


Curranville mining camp, Crawford County, Kansas



Public School Curranville - KANSAS

Curranville mining camp, Crawford County, Kansas



Street scene

Curranville - Kansas

Curranville mining camp, Crawford County, Kansas

