

Edison mining camp, Crawford County, Kansas

Here are several photographs of Edison, a mining town located in Crawford County along what is now Highway K-47 about two miles west of US Highway 69. At its peak, the population was approximately 300. There are currently a few houses in the area. Photographs include images of a mine, a theater, schools, a church, a store, and street scenes.

Date: Between 1890 and 1940

Callnumber: Miners Hall 00008

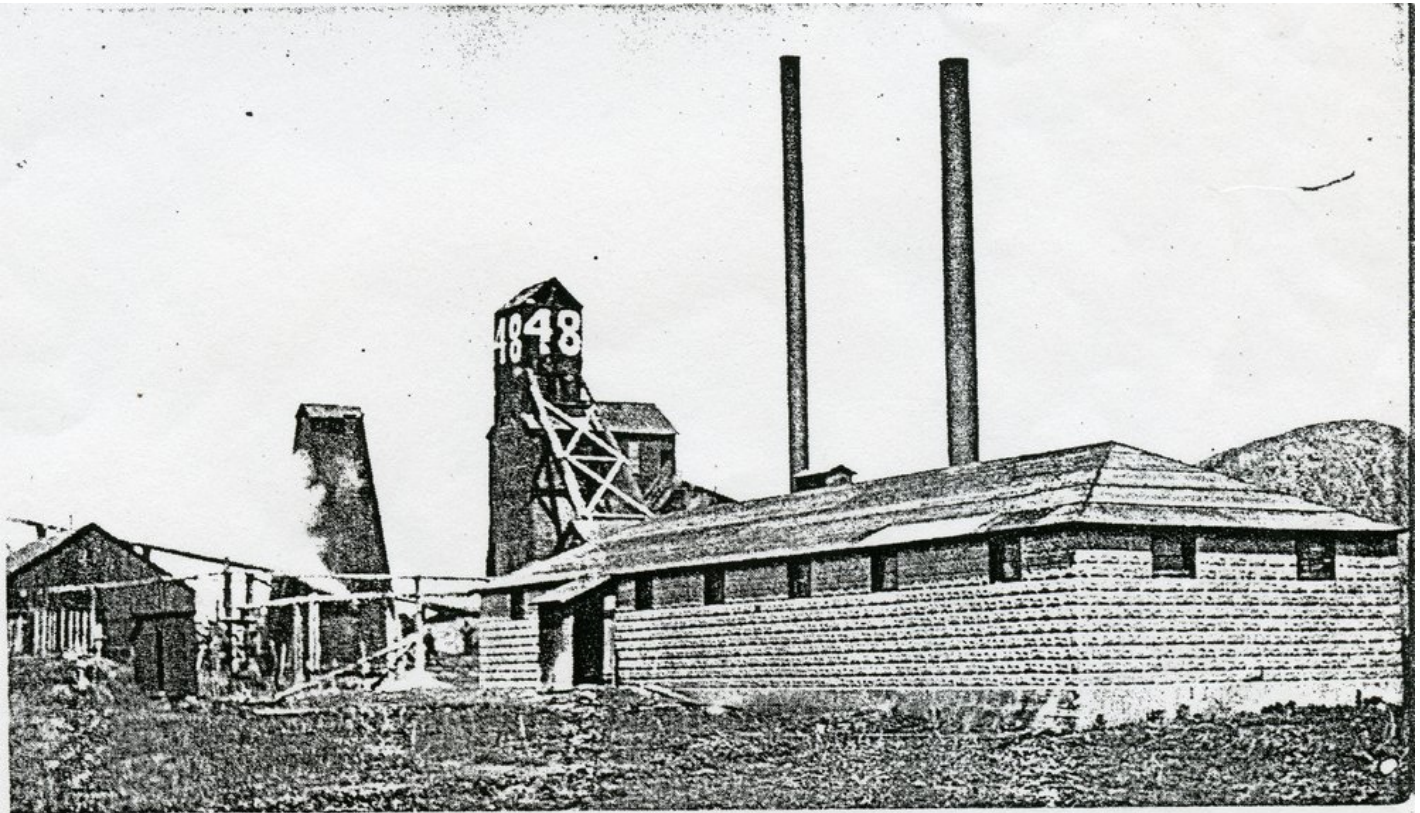
KSHS Identifier: DaRT ID: 448105

Item Identifier: 448105

www.kansasmemory.org/item/448105



Edison mining camp, Crawford County, Kansas



Central Coal & Coke Company #48 shaft mine, near Edison Camp in Crawford county, sometime during the 1910's. The underground mine has been defunct for several decades. Photos courtesy of the Pittsburg & Midway Coal Mining Company, Kansas City, Mo.

Edison mining camp, Crawford County, Kansas



Edison mining camp, Crawford County, Kansas



Edison mining camp, Crawford County, Kansas



Edison mining camp, Crawford County, Kansas



Street Scene

EDISON - KANSAS

Edison mining camp, Crawford County, Kansas



Colored School

EDISON-KANSAS

Edison mining camp, Crawford County, Kansas



Edison mining camp, Crawford County, Kansas



store and water tower

EDISON - KANSAS