

## Hematite Artifact from Johnson County

The function of this hematite artifact, donated to the Kansas Historical Society in 2017, is unknown. Hematite is a relatively soft and fine-grained mineral form of iron oxide. It is easily carved and polished, as is seen on this example.

Date: Unknown

Callnumber: 14JO 2017.B.360 Roberts donation

KSHS Identifier: DaRT ID: 447320

Item Identifier: 447320

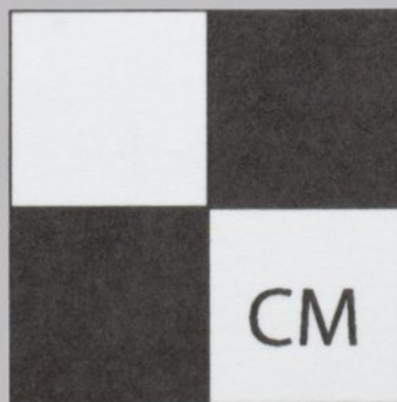
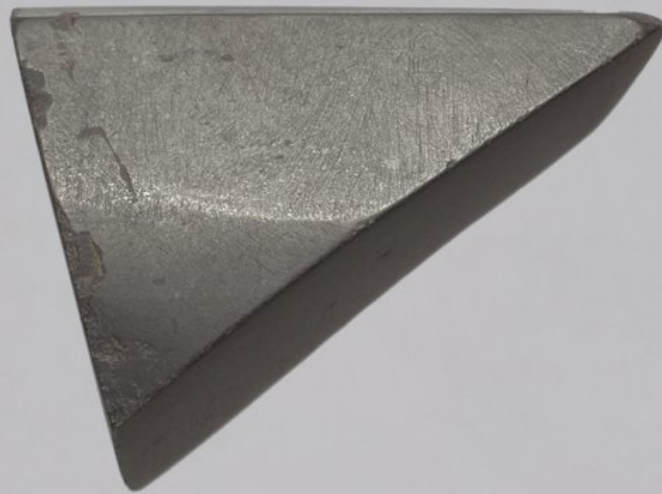
[www.kansasmemory.org/item/447320](http://www.kansasmemory.org/item/447320)



## Hematite Artifact from Johnson County



## Hematite Artifact from Johnson County



## Hematite Artifact from Johnson County

