

Fully-Grooved Axe from Doniphan County

This fully grooved axe was first discovered near Troy in Doniphan County in 1915. Since then, the artifact has changed hands several times before being donated to the Kansas Historical Society in 1973. Axes like these are made by pecking a hard stone into a rough shape and then grinding and polishing it into its final state. They get their name from the hafting groove, which fully encircles the axe body.

Date: Unknown

Callnumber: 14DP 73.68.5252 Trowbridge donation

KSHS Identifier: DaRT ID: 446377

Item Identifier: 446377

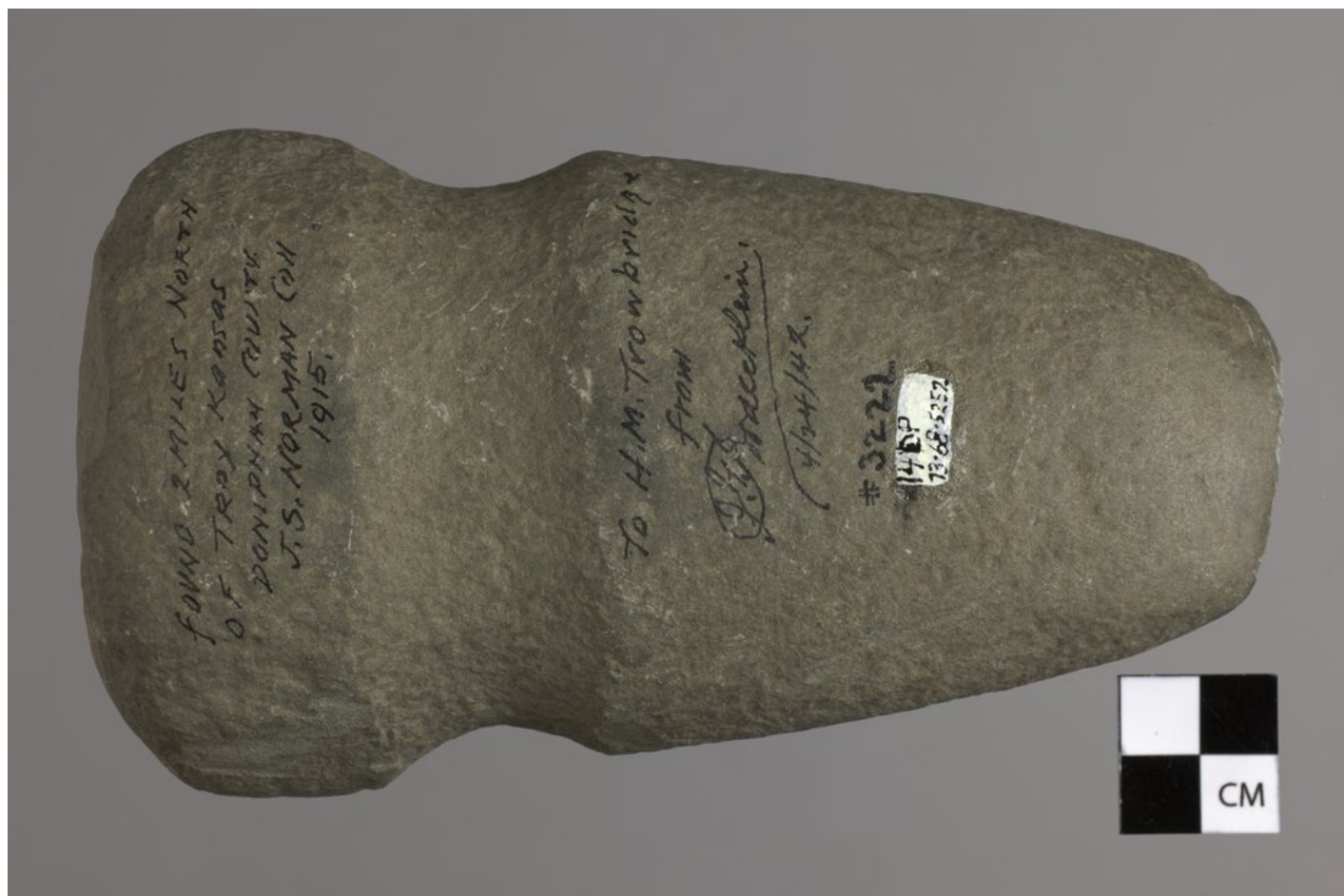
www.kansasmemory.org/item/446377



Fully-Grooved Axe from Doniphan County



Fully-Grooved Axe from Doniphan County



Fully-Grooved Axe from Doniphan County

