

## Pipestone Elbow Pipes from the Sharps Creek Site, 14MP408

These three elbow pipes were recovered from the Sharps Creek site, a Great Bend aspect (ancestral Wichita) village site in McPherson County, and donated to the Kansas Historical Society in 1993. The two pipes on the left were broken after use as is evidenced by the dottle (tobacco residue) traces left on the interior of the pipes. The soft fine grained material of pipestone enabled the pipe's maker to carve them into their elbow-like shape. Pipes were used during trade negotiations and to mark special occasions. In Kansas, these pipes are generally made by American Indians between 1650 to 1850.

Date: 1500-1800 CE

Callnumber: 14MP408-E.7 Feature 95; 14MP408-S.60; 14MP408-S.479

KSHS Identifier: DaRT ID: 440034

Item Identifier: 440034

[www.kansasmemory.org/item/440034](http://www.kansasmemory.org/item/440034)

KANSAS  
HISTORICAL  
SOCIETY

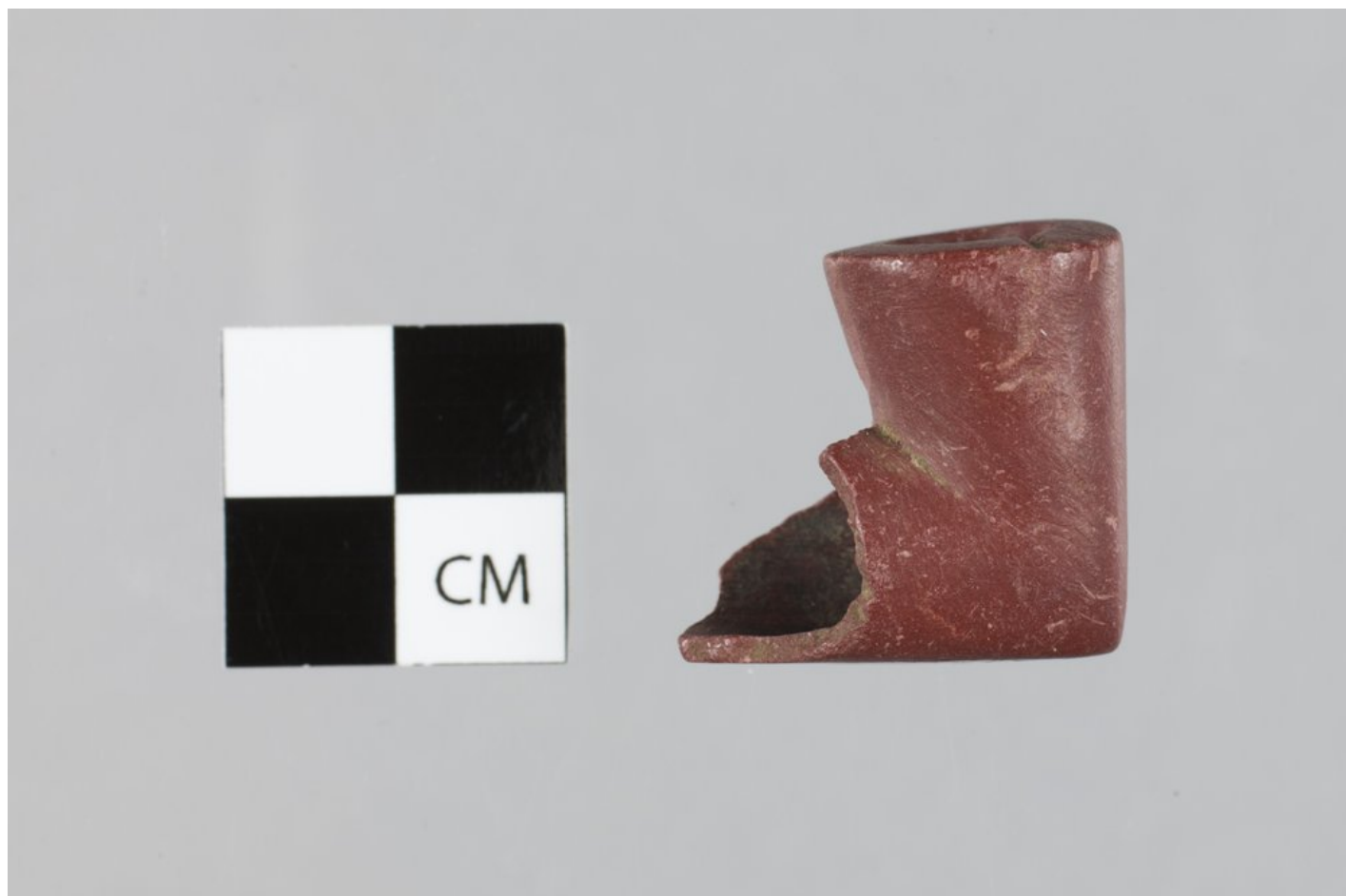
## Pipestone Elbow Pipes from the Sharps Creek Site, 14MP408



## Pipestone Elbow Pipes from the Sharps Creek Site, 14MP408



## Pipestone Elbow Pipes from the Sharps Creek Site, 14MP408



## Pipestone Elbow Pipes from the Sharps Creek Site, 14MP408



## Pipestone Elbow Pipes from the Sharps Creek Site, 14MP408

