

Aerial view of Shawnee County, Kansas

This aerial photograph taken by the Agricultural Stabilization and Conservation Service shows parts of Shawnee County. The map is an overview of the areas photographed.

Creator: Agricultural Stabilization and Conservation Service

Date: July 20, 1959

Callnumber: Aerial maps 52 Sn 3-1, Shawnee County

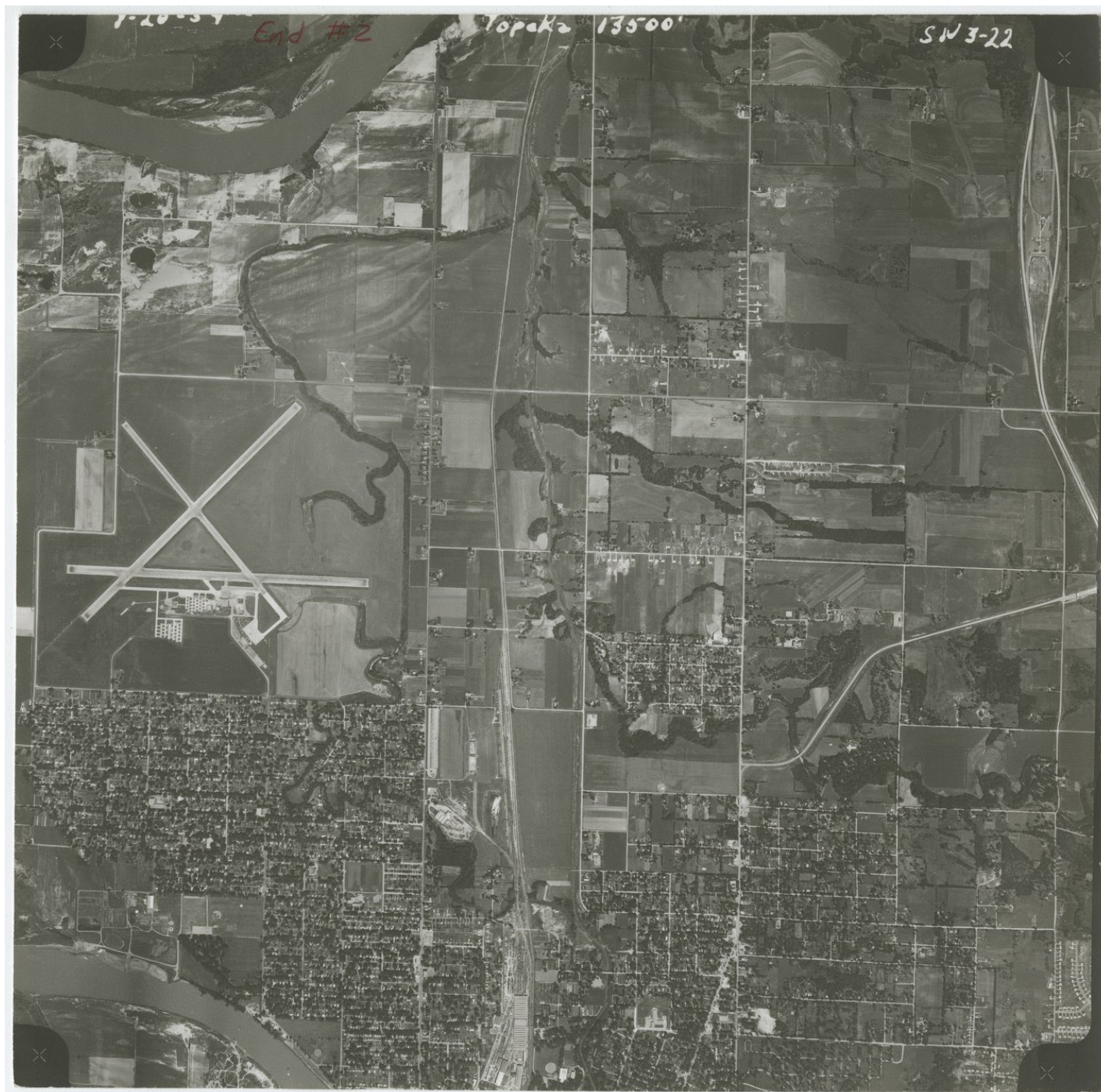
KSHS Identifier: DaRT ID: 310785

Item Identifier: 310785

www.kansasmemory.org/item/310785



Aerial view of Shawnee County, Kansas



Aerial view of Shawnee County, Kansas

