

## Livestock Sanitary Commissioner's Office, correspondence, 1919-1924

### Section 15, Pages 421 - 450

This collection contains correspondence regarding indemnities for cattle killed by tuberculosis, concerns over the findings of veterinary inspection, discussion of an outbreak of rabies among Kansas dogs that affected cattle, complaints of veterinary treatments killing animals, and general discussion about livestock diseases. The correspondence is mostly between the Livestock Sanitary Commissioner and various livestock owners throughout Kansas.

Creator: Kansas. Livestock Sanitary Commissioner

Date: 1919-1924

Callnumber: Livestock Sanitary Commissioner, Correspondence, 1919-1924

KSHS Identifier: DaRT ID: 310244

Item Identifier: 310244

[www.kansasmemory.org/item/310244](http://www.kansasmemory.org/item/310244)

KANSAS  
HISTORICAL  
SOCIETY

## Livestock Sanitary Commissioner's Office, correspondence, 1919-1924

-2-

and changes and keep a record that would be of any consequence. So the state quite awhile ago quit furnishing tags to owners of tuberculin tested herds. The only tag we furnish is a tag for the reacting animals. There would be no harm in the owners' furnishing their own tags if they wished to, but I think it is absolutely an unnecessary expense, and as above stated, I do not think you could require them to do so, and I do not think you would want to burden the owners of dairy cattle furnishing milk products to your city with any unnecessary expense.

The intradermal and thermic tests are the legal tests for Kansas and any other kind of test is illegal., and the rules of the test will have to be made by this department as above indicated, and I would suggest that that be left entirely out of your ordinance.

With reference to the C. Rhea Serum Company: As I understand it, no one has jurisdiction over his plant except the city of Kansas City, Kansas and Missouri, for the reason that he does not offer his serum for sale, and makes and uses it for his own hogs, which he would have a right to do without any interference, unless it could be shown that he was causing an outbreak of contagious or infectious disease on his premises by so doing. It is quite difficult to feed hogs and keep pens up in a very high grade of sanitation and I do not know that we could say anything in this matter other than to say that Kansas City would have a right to require Mr. Rhea to comply with the city ordinance with reference to sanitation, within the city limits. We have made some inspections of these yards, and so far have been unable to find any grounds to require Mr. Rhea to cease his operations, as ordinarily his feed yards are in about the same condition as the average farm yard on the various farms of the state. I would suggest that if the Rhea feed yards are a nuisance, you could compel him to close same as a city order. I might add that Mr. Rhea has carried out several suggestions we have made to him regarding his pens, and if you have anything in mind that you think would be a benefit and will let us know about we will be glad to make a suggestion to Mr. Rhea and help you in any way we can; however, our authority only goes so far, and feel that the rest it rests more with Kansas City, Kansas and Missouri as to whether or not Mr. Rhea operates a feed yard within the requirements of the rules and regulations of your city laws.

Very truly yours

Commissioner.





## Livestock Sanitary Commissioner's Office, correspondence, 1919-1924

DEPARTMENTS:  
PARKS AND PUBLIC PROPERTY  
HEALTH  
SANITATION

City of Kansas City, Kansas  
HEALTH DEPARTMENT

May 28, 1920.

Dr. J. H. Mercier,  
State Live Stock Sanitary Commission,  
Topeka, Kansas.

Dear Doctor:-

Dr. L. S. Campbell was in my office the other day and he stated that he would like to have the Kansas City, Kansas Health Department recognize the Tuberculosis Testing of the Bureau of Animal Husbandry. Our present ordinance does not. He suggested some changes in our ordinance. We are now drawing up a new ordinance. Our present one requires that the cattle be tested by a veterinarian, recognized by our Department. The new ordinance which has been recommended to us has the following clause in it.

"After such inspection, examination and test of such cattle and dairy herd as herein provided, every animal so examined and tested shall be tagged in the ear by the person making such examination and test, with a numbered ear tag furnished for this purpose by the State Live Stock Sanitary Commissioner of Kansas, so as to afford a permanent record of such examination and test."

Dr. Campbell informs me that the state has no tags to furnish local veterinarians. The dairymen have made the request for state tags on the ground that if a dairyman was living midway between Kansas City, and Leavenworth, his test would be good for either city. What is your opinion in this matter?

This proposed ordinance recognizes only two tests, the thermal and the intra dermal. It further sets down the hours (6 P.M. to 9 P.M.) that the injection must be made and it requires the temperature to be taken every two hours beginning 8 hours after the injection, until a definite reaction occurs, or until the temperature begins to fall. Do you think it advisable to include this in an ordinance?

A second matter which I would like to take up with you and which I know has been taken up with you before, is concerning the C. Rhea Serum Company. I believe that you are aware of the situation here. His pens extend into both Kansas and Missouri. The pens were in such a filthy condition that on April 16th, I gave him thirty days to comply with the city ordinance. May 16th, he had not complied, so I swore out a warrant. He is now complying with the ordinance on the Kansas side, but the Missouri side is still filthy. Of course



## Livestock Sanitary Commissioner's Office, correspondence, 1919-1924

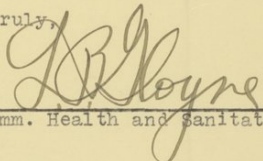
DEPARTMENTS:  
PARKS AND PUBLIC PROPERTY  
HEALTH  
SANITATION

City of Kansas City, Kansas  
HEALTH DEPARTMENT

he brings these hogs from Missouri back into Kansas to make his serum. It is impossible for me to see, with my knowledge of bacteriology, how he can make serum that would be safe. The conditions around his place of business is surely many times worse than that of any other serum business in Kansas City, Kansas.

Hoping that this information may be of some value to you, at the same time assuring you that I will cooperate with you to the fullest extent in bringing this business up to standard, and thanking you in advance for any information that you may give me concerning our milk ordinance, I am

Yours truly,

  
Comm. Health and Sanitation. M.D.

LEG:KB



## Livestock Sanitary Commissioner's Office, correspondence, 1919-1924

June 5, 1920.

Mr. J. O. Barkley  
General Manager,  
South St. Joseph Stock Yards Co.,  
So. St. Joseph, Mo.

Dear Mr. Barkley:

Mr. Daughters talked to me today regarding a plan you had in mind of making the yardage charge against the speculators for the handling of cattle on the yards at St. Joseph. The way he outlines this to me, I see nothing wrong in the scheme. It has always been more or less a mystery to me why the traders or speculators did not pay any yardage charge. I also understand that the commission merchant sells the speculator's cattle for one half or less what he charges the regular shipper for the same class of business. I have never been able to find out why there was a discrimination.

I really do not see that there could be anything wrong in making a yardage charge against every herd of cattle changing hands on your yards, especially if they pass over the scales. However, I have never given this subject very much thought and would be glad to go over it thoroughly with you sometime if you would care to run down to Topeka or would meet me down at Kansas City.

Very truly yours

## Livestock Sanitary Commissioner's Office, correspondence, 1919-1924

The St. Joseph Stock Yards Company was ~~again~~ again forced to increase the pay of its employees the first of this month, making the fifth increase in pay during a three year period. This latest increase will cost the Company between \$30,000 and \$40,000 per year, and according to J. O. Barkley, General Manager of the yards, the company was forced to either increase the general yardage charges to shippers or make some other move to absorb the increase in pay. Mr. Barkley is absolutely opposed to making any increase in yardage charges, realizing that the producers are now suffering such severe losses. Therefore he is now seeking to secure this revenue by making a yardage charge against speculators. In this scheme order buyers and stocker and feeder speculators are exempted. But the regular charge of 30 cents per head is assessed against a bunch of cattle, for instance every time they change hands--not for shipment or drive out. The new owner paying the charge. Mr. Barkley states that the men who will be forced to pay this charge are those who are operating on the yards, never buy one cent's worth of feed, stealing or mooching all they use and that many of them are undesirable or crooked and responsible for many complaints on the part of shippers. For this reason he believes that they should be forced to pay for the service they receive before any increase in yardage charges is assessed against the shippers. He further states that he estimates that this charge against the speculators will net the yard company around \$30,000 per annum and will make an increase in yardage unnecessary. Mr. Barkley says that he has economized at every possible turn in order to avoid increasing charges at the St. Joseph yards. He explained one scheme he worked out by which he has saved ~~over~~ nearly \$20,000 per annum on the water bill at the yards. Incidentally he expressed the opinion that \$50,000 worth of water was



## Livestock Sanitary Commissioner's Office, correspondence, 1919-1924

being absolutely wasted annually at the Kansas City stock yards--  
all of which was being charged against the shippers.  
Mr. Barkley states that the <sup>speculators</sup> ~~speculators~~ are raising an awful roar  
~~speculators~~  
about his action--charging that he has discriminated. He is  
very desirous that you write him your opinion--or if you wish it  
give him an opportunity to discuss it with you.  
I talked to a number of commission men about the plan and a majority  
of them seemed to favor it. A few objected.

## Livestock Sanitary Commissioner's Office, correspondence, 1919-1924

June 7, 1920.

County Treasurer, 44  
Wilson County,  
Fredonia, Kansas.

Dear Sir:

In re reactor -- Tag No. 316.

We are enclosing herewith account sales with check attached in the amount of \$54.75, sent to this office by Swift & Henry Live Stock Commission Company, covering the net proceeds of the sale of one cow originally belonging to Mr. C. L. Porter of your county. This animal was recently condemned on account of being infected with the contagious disease tuberculosis and has been disposed of in accordance with the law governing matters of this kind.

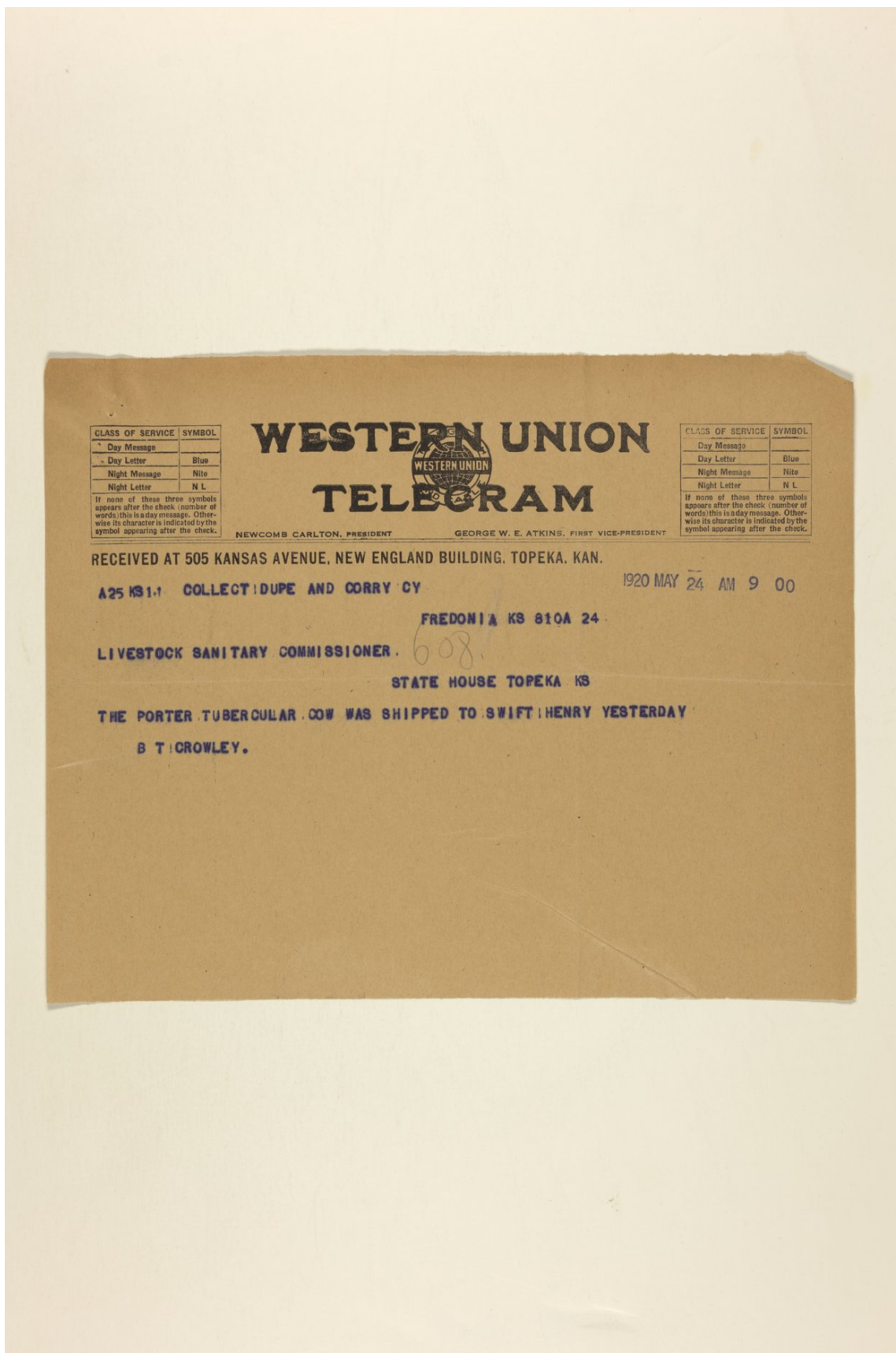
Kindly acknowledge with your official receipt for our files.

Very truly yours,

Commissioner.



## Livestock Sanitary Commissioner's Office, correspondence, 1919-1924



## Livestock Sanitary Commissioner's Office, correspondence, 1919-1924

May 24, 1920.

Mr. O. L. Porter,  
Fredonia, Kansas.

Dear Sir:

In re reactor -- Tag No. 316.

We are enclosing herewith order drawn on the Board of County Commissioners of Wilson County, Kansas, for \$100.00, same being one-half the appraised value of your cow which was recently condemned on account of being infected with the contagious disease tuberculosis.

You will go before a notary public and qualify to this order and then present same, together with the attached copy of appraisal, to your Board of County Commissioners and they will issue you warrant on your County Treasurer covering same.

Very truly yours,

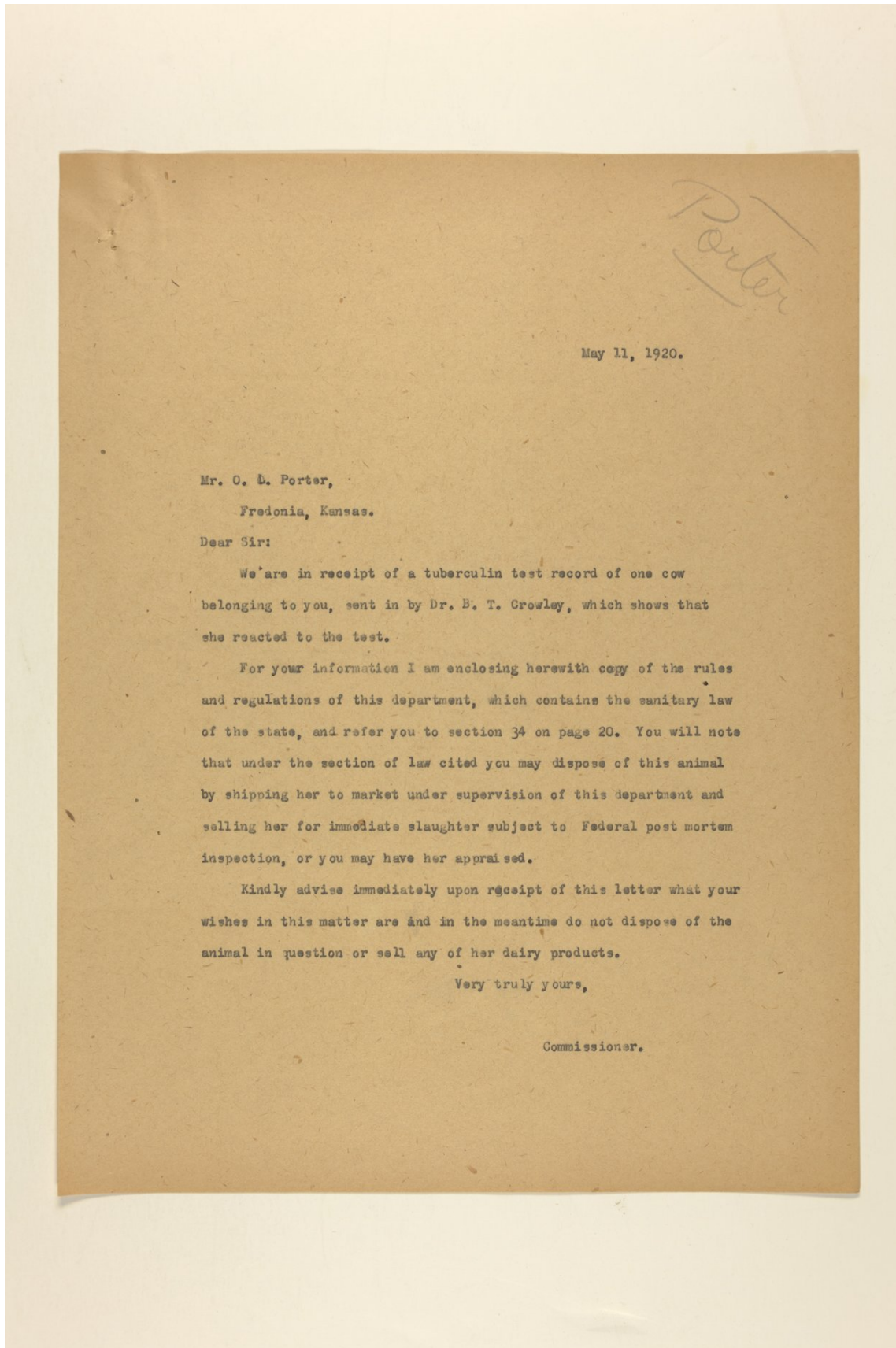
Commissioner.



## Livestock Sanitary Commissioner's Office, correspondence, 1919-1924

Frederick, Kans.  
May 14-1920  
J. W. Mercer,  
Topeka, Kans.  
Dear Sir:-  
In reply to your  
letter of the 11th. Inst., will  
say that I wish to have  
the cow appraised.  
Respectfully  
O. L. Porter

## Livestock Sanitary Commissioner's Office, correspondence, 1919-1924



May 11, 1920.

Mr. O. B. Porter,  
Fredonia, Kansas.

Dear Sir:

We are in receipt of a tuberculin test record of one cow belonging to you, sent in by Dr. B. T. Crowley, which shows that she reacted to the test.

For your information I am enclosing herewith copy of the rules and regulations of this department, which contains the sanitary law of the state, and refer you to section 34 on page 20. You will note that under the section of law cited you may dispose of this animal by shipping her to market under supervision of this department and selling her for immediate slaughter subject to Federal post mortem inspection, or you may have her appraised.

Kindly advise immediately upon receipt of this letter what your wishes in this matter are and in the meantime do not dispose of the animal in question or sell any of her dairy products.

Very truly yours,

Commissioner.



## Livestock Sanitary Commissioner's Office, correspondence, 1919-1924

Dr. B. T. Crowley

508 NORTH SEVENTH  
PHONE 361

FREDONIA, KANSAS

May 8 1922

Livestock Sanitary Commissioner  
Topeka  
Kan

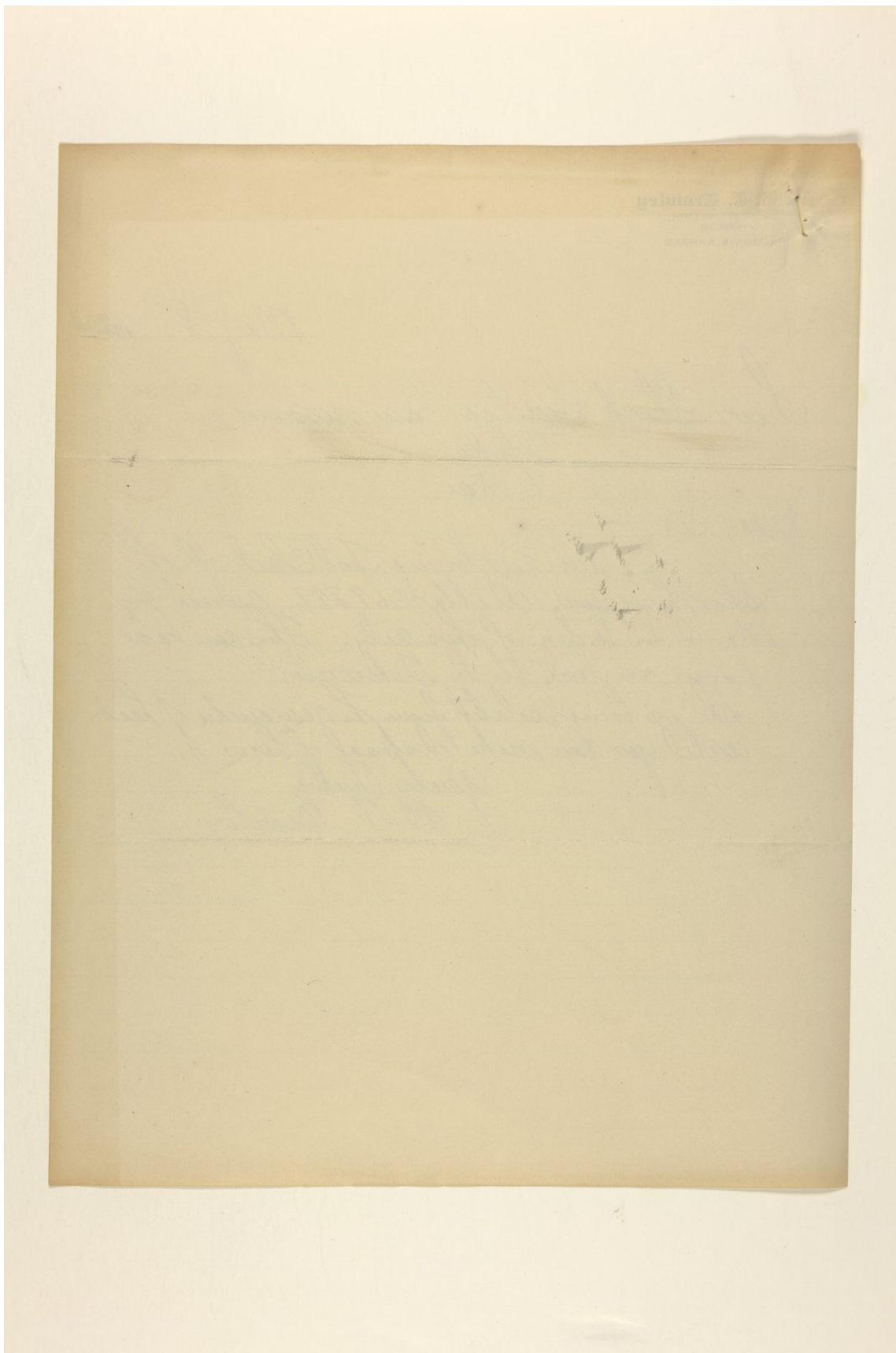
Dear Sir:

I am enclosing Test Chart of the  
Short Horn Cow, Wilba 569897, owned by  
Mr. O. L. Porter, of this city. This cow has  
passed our test, she is Tubercular.

She is being isolated from the remainder of herd  
until you can make disposal of her.

Yours Truly  
B. T. Crowley

## Livestock Sanitary Commissioner's Office, correspondence, 1919-1924





## Livestock Sanitary Commissioner's Office, correspondence, 1919-1924

June 9, 1920.

Dr. J. J. Harman,  
Valley Falls, Kansas.

Dear Sir:

As per your request of the 7th instant we are sending you under separate cover book of intradermal charts. Immediately after talking with you the other day we asked the government office here to send you tuberculin and we supposed it was sent you. However, we called them today and asked if tuberculin had been sent you and they advised that they were unable to do so because their supply is entirely exhausted. Express service and shortage of labor in the department at Washington make it so that we are unable to keep tuberculin on hand more than half the time. It is not probable that a new supply from Washington will be received before next week, but as soon as it comes we will fill your order.

Very truly yours,

Commissioner.

M

## Livestock Sanitary Commissioner's Office, correspondence, 1919-1924

Valley Falls Kan.  
6/7/20

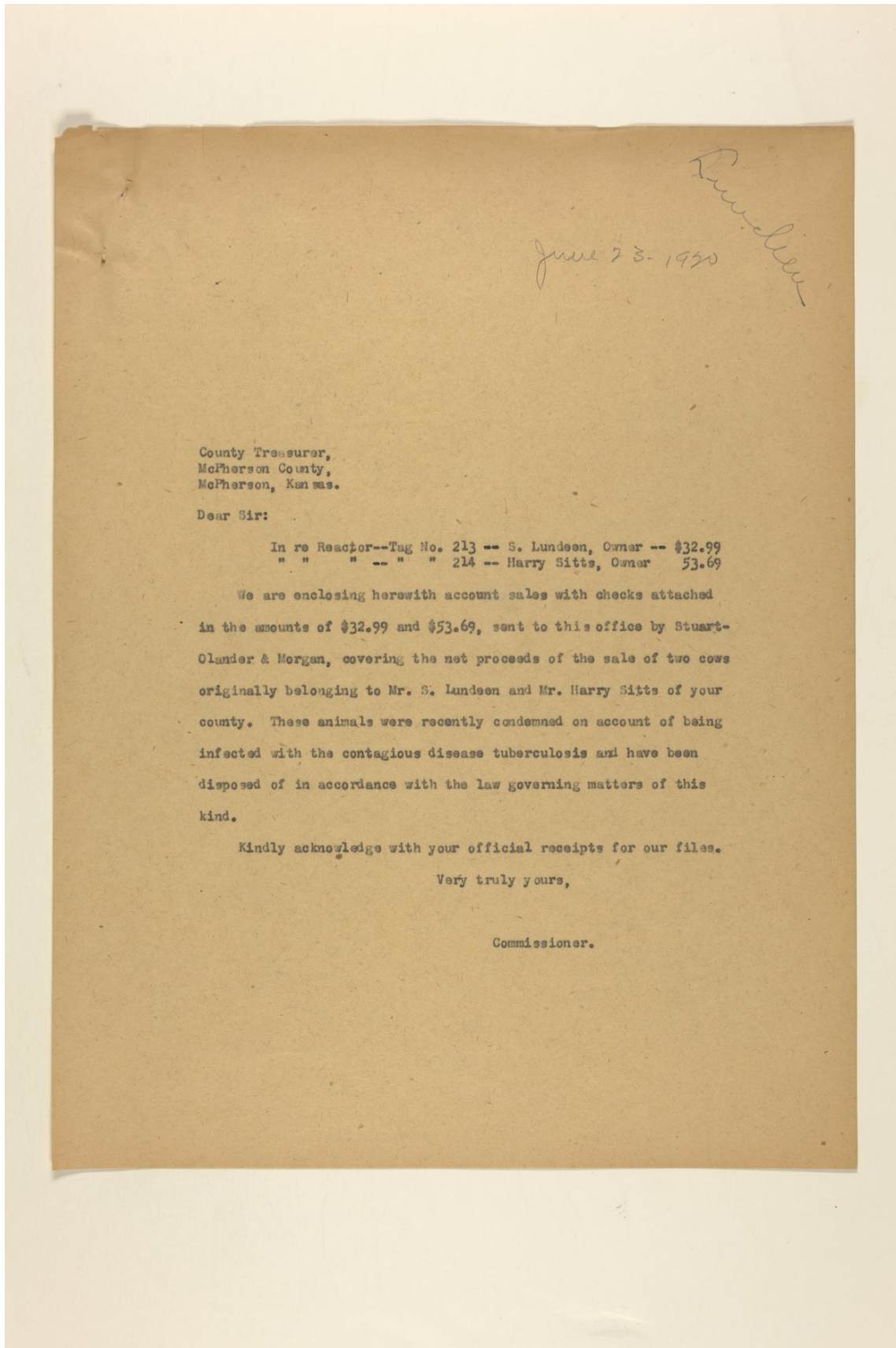
J H Mercer Topeka Kan.  
Dear Sir:-

I called you the other day in regards to tuberculin and Intracutaneous test charts, but thought you had probably forgotten them. I have some commercial tuberculin but would like some charts immediately as I have to use three flasks for each herd.

Yours very truly  
J H Harman



## Livestock Sanitary Commissioner's Office, correspondence, 1919-1924



County Treasurer,  
McPherson County,  
McPherson, Kansas.

Dear Sir:

In re Reactor--Tag No. 213 -- S. Lundeen, Owner -- \$32.99  
" " " -- " " 214 -- Harry Sitts, Owner 53.69

We are enclosing herewith account sales with checks attached in the amounts of \$32.99 and \$53.69, sent to this office by Stuart-Olander & Morgan, covering the net proceeds of the sale of two cows originally belonging to Mr. S. Lundeen and Mr. Harry Sitts of your county. These animals were recently condemned on account of being infected with the contagious disease tuberculosis and have been disposed of in accordance with the law governing matters of this kind.

Kindly acknowledge with your official receipts for our files.

Very truly yours,

Commissioner.

## Livestock Sanitary Commissioner's Office, correspondence, 1919-1924

Rudolf Lundeen  
W. Peterson, Ke.  
June 14 - 20  
J. H. Mercer  
Jopka, Mo.  
Reactor - Tag, No. 312  
shipped today to Stuart-  
Olander & Morgan.  
Kansas City Mo.

## Livestock Sanitary Commissioner's Office, correspondence, 1919-1924

June 4, 1920.

Mr. Rudolph F. Lundeen,  
McPherson, Kansas.

Dear Sir:

In re Reactor -- Tag No. 312.

We are enclosing herewith order drawn on the Board of County Commissioners of McPherson County, Kansas, for \$75.00, same being one-half the appraised value of your cow which was recently condemned on account of being infected with the contagious disease tuberculosis.

You will go before a notary public and qualify to this order and then present same, together with the attached copy of appraisal, to your Board of County Commissioners and they will issue you warrant on your County Treasurer covering same.

Very truly yours,

Commissioner.



## Livestock Sanitary Commissioner's Office, correspondence, 1919-1924

May 27, 1920.

Mr. Rudolph F. Lundeen,  
McPherson, Kansas.

Dear Sir:

In reply to your letter of recent date, wish to say that Mr. W. W. Downey, a representative of this department will reach your place within the next few days to appraise the animal in question.

Regarding your request for a chart of the tuberculin inspection of one of your cows, which was shipped recently, wish to say that I do not quite understand what you want. I am taking it for granted, however, that you mean the report of the final post mortem examination of the animals which were killed. The post mortem report on file in this office shows all of your animals to have been affected with tuberculosis. Tag No. 606 was the worst affected of the three. However, numerous tubercular lesions were found in the other two.

Very truly yours,

Commissioner.

B

Theophil Lundberg  
 M. Thos., Kas.  
 C. Macer  
 Topeka, Kas.  
 Dear Sir - Your  
 letter of recent date, to Dr. Commer  
 regarding our cow which he  
 was unable to treat on  
 account of an abnormal  
 temperature, was forwarded  
 to me with a request to ans.  
 It seems certain the cow  
 has T. B. and half the ap-  
 praised valuation will be  
 satisfactory with us.  
 Please send a chart of the  
 T. B. inspection of our other  
 cows which were shipped recently.  
 Yours very truly,  
 Theophil Lundberg



## Livestock Sanitary Commissioner's Office, correspondence, 1919-1924

*Revised*

May 10, 1920.

Dr. C. S. Cenner,  
McPherson, Kansas.

Dear Sir:

In reply to your letter of May 4th, concerning the Lundeen cow which you have been unable to test on account of high temperatures, wish to say that if in your opinion this animal is a reactor, it will be satisfactory with this department for you to condemn same under the intradermal test. However, it will be well for you to talk this over with the owner and if he is satisfied it will be all right. It is not consistent, however, when suspicious cattle are condemned under the intradermal test for the owner to claim full appraised value for same should they show no tubercular lesions under Federal post mortem inspection.

Very truly yours,

Commissioner.

B



## Livestock Sanitary Commissioner's Office, correspondence, 1919-1924

C. S. CONNER, D. V. M.  
McPHERSON, KANSAS

May 4, 1920.

Mr J. H. Mercer,  
Topeka, Kansas.

Dear Sir:-

I sent you the result of the cows that were re-tested for Lundeen some time ago. I told you at the time that one which had reacted on the intradermal test had such a high temperature as not to warrant a test at that time so did not test her. I went back again last night to test her but the high temperature still prevailed. The cow shows symptoms of advanced generalised tuberculosis.

Would it be possible to condemn her from the intradermal test that was given? Please let me know at once what course you wish me to follow in this matter.

I have not yet received the voucher I asked for to fill out for the work I did on these cows. May I not receive the same from you soon?

Yours very truly,

*C. S. Conner.*

*Satisfactory if owner is willing -  
No full appraised value allowed  
in case animal does not show  
lesions r*

## Livestock Sanitary Commissioner's Office, correspondence, 1919-1924

May 8, 1920.

County Treasurer,  
McPherson County,  
McPherson, Kansas.

Dear Sir:

In re Reactors -- Tag Nos. 606-601-172

We are enclosing herewith account sales with check attached in the amount of \$82.04, sent to this office by Witherspoon-McMullen Live Stock Commission Company, covering the net proceeds of the sale of three head of cattle belonging originally to Mr. S. Lundeen of your county. These animals were recently condemned on account of being infected with the contagious disease tuberculosis and have been disposed of in accordance with the law governing matters of this kind.

Kindly acknowledge with your official receipt for our files.

Very truly yours,

Commissioner.



## Livestock Sanitary Commissioner's Office, correspondence, 1919-1924

April 26, 1920.

Lundeen & Sons,  
McPherson, Kansas.

Dear Sirs:

In re reactors -- Tag Nos. C-606-C-601-J-172.

We are enclosing herewith order drawn on the Board of County Commissioners of McPherson County, Kansas, for \$187.50, same being one-half the appraised value of your three head of cattle which were recently condemned on account of being infected with the contagious disease tuberculosis.

You will go before a notary public and qualify to this order and then present same, together with the attached copy of appraisement, to your Board of County Commissioners and they will issue you warrant on your County Treasurer covering same.

Very truly yours,

Commissioner.



## Livestock Sanitary Commissioner's Office, correspondence, 1919-1924

April 21, 1920.

Mr. S. Lundeen,

McPherson, Kansas.

Dear Sir:

We are in receipt of a record of the retest of five head of cattle belonging to you, sent in by Dr. C. S. Conner, which shows that three of them reacted to the test and the other two passed a clean test.

Dr. Conner advises that you wish to have these animals appraised and this will advise you that our representative will call upon you some time this week and attend to same. In the meantime do not dispose of the animals in question or sell any of their dairy products.

Very truly yours,

Commissioner.

## Livestock Sanitary Commissioner's Office, correspondence, 1919-1924

C. S. CONNER, D. V. M.  
McPHERSON, KANSAS

April 17, 1920.

Mr J. H. Mercer,  
Topeka, Kansas.

Dear Sir:-

I am sending you inclosed, the result of the retest on the Lundeen Cows. You will not that I did not test one of these cows. As the temperatures ran so high I did not think it advisable at this time. Her clinical symptoms are indicative of pulmonary tuberculosis.

I have advised the owner that it might be well to have his herd tested every six months until he gets it clean.

Will you please send me two twenty cc vials of tuberculin.

The owner of these cows wishes to have his animals appraised and will take half the appraisement rather than ship them subject to slaughter. He requests that this matter be taken up soon as possible in order to get the diseased cows off of his place.

Yours very truly,

*C. Conner*

## Livestock Sanitary Commissioner's Office, correspondence, 1919-1924

April 14, 1920.

Dr. C. S. Conner,  
McPherson, Kansas.

Dear Sir:

Replying to your letter of the 9th instant, wish to say that it will be satisfactory with us for you to go ahead and retest the six suspects belonging to Mr. Lundeen and we will pay you for same.

Under the law we can allow you for two days' services at \$5.00 per day and your necessary traveling expenses. In view of the fact that our funds are so low we trust that you will keep your expenses as low as possible.

Very truly yours,

Commissioner.

M



## Livestock Sanitary Commissioner's Office, correspondence, 1919-1924

C. S. CONNER, D. V. M.  
McPHERSON, KANSAS

April 9, 1920.

Mr J. H. Mercer,  
Topeka, Kansas.

Dear Sir:-

As the roads have been impassable ever since I received your letter I was unable to get to Mr Lundeen's place until today. When I showed him your letter wherein in it would be necessary for him to pay me for a re-test he balked.

Now as the city ordinance only demands one test a year here I hardly see where we can compel him to make a re-test. If you deem it advisable I would be perfectly willing to have you send out a man for that work either from your department or that of the B.A.I.

Yours very truly,

*C. S. Conner*

*Enter  
to  
m. b.  
C. m.  
mother*

## Livestock Sanitary Commissioner's Office, correspondence, 1919-1924

March 31, 1920.

Mr. S. Lundeen,  
McPherson, Kansas.

Dear Sir:

For your information I am enclosing copy of a letter written  
this date to Dr. C. S. Conner concerning your herd of cattle.  
I am also enclosing copy of the sanitary law of the state.

Very truly yours,

Commissioner.

B



## Livestock Sanitary Commissioner's Office, correspondence, 1919-1924

March 31, 1920.

Dr. C. S. Conner,  
McPherson, Kansas.

Dear Sir:

In reply to your letter of March 30th regarding test record of the Lundeen cattle, wish to advise that it will be all right for you to retest these cattle immediately using the thermal test. Inasmuch as the best results seem to be obtained by following the intradermal with the thermal test immediately I would suggest that you make this retest without delay. The cattle should be injected with not less than 6 c.c. and you should take not less than seven post temperatures.

In this case it will be necessary for the owner to pay you for making the retest inasmuch as the funds of this department appropriated for tuberculosis work are exhausted. It will probably be well for you to explain this matter to Mr. Lundeen.

Very truly yours,

Commissioner.

B