

Hollenberg Pony Express Station Buttons, 14WH316

Several buttons were found during the 1991 excavations at the Hollenberg Pony Express Station in Washington County. One button fragment is made of shell and the rest are glass. The Hollenberg Pony Express Station was added to the National Register of Historic Places in 1966, and earlier as a National Historic Landmark in 1961.

Date: 1857-1941

Callnumber: 14WH316-462; 14WH316-465; 14WH316-470; 14WH316-474; 14WH316-476; 14WH316-1217

KSHS Identifier: DaRT ID: 309483

Item Identifier: 309483

www.kansasmemory.org/item/309483



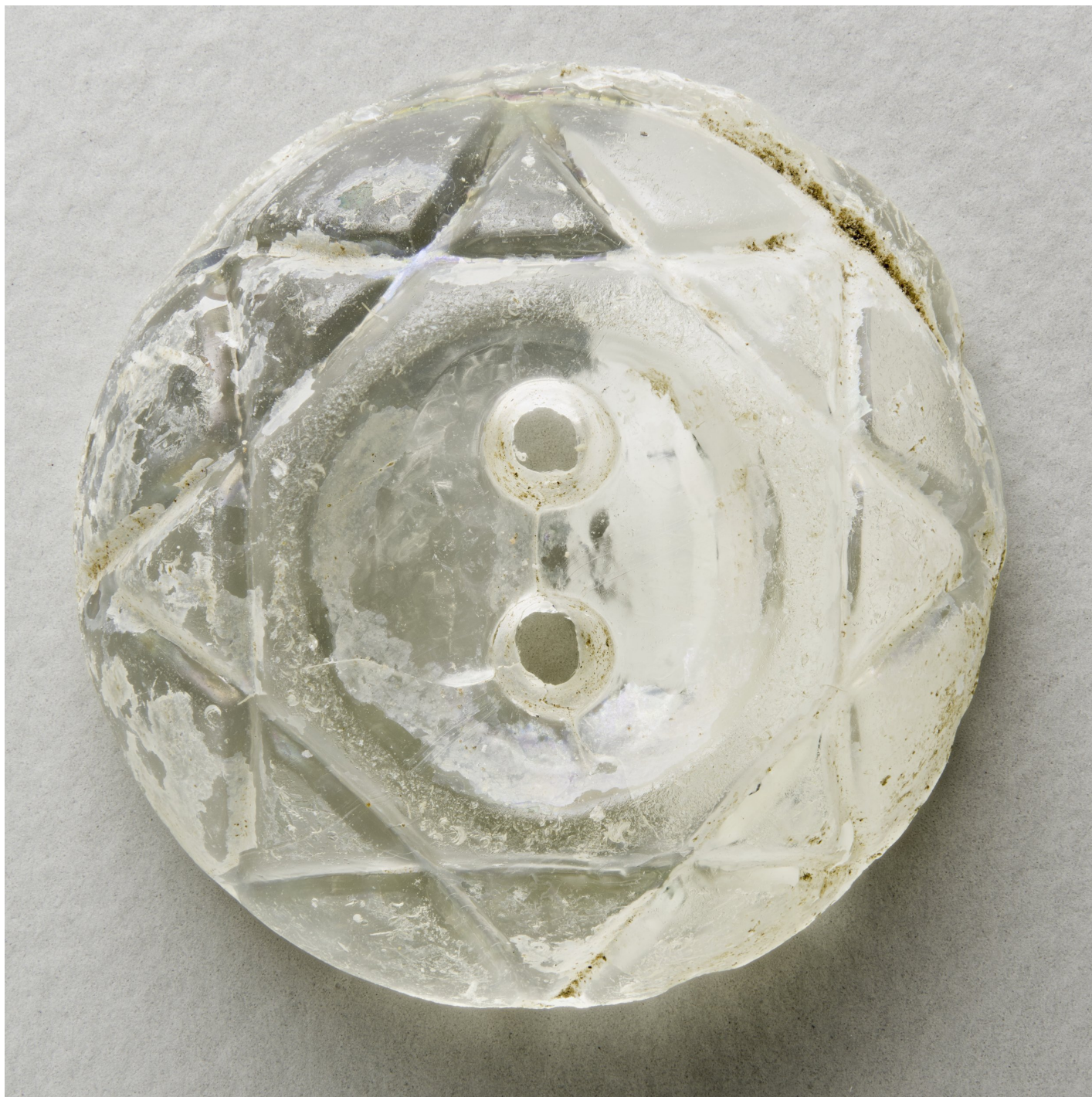
Hollenberg Pony Express Station Buttons, 14WH316



Hollenberg Pony Express Station Buttons, 14WH316



Hollenberg Pony Express Station Buttons, 14WH316



Hollenberg Pony Express Station Buttons, 14WH316

