

Construction on the Post Office and Federal Courthouse in Topeka, Kansas

Section 1, Pages 1 - 30

Here are photographs showing construction on the United State Post Office and Federal building located at 424 SW Kansas Avenue in Topeka, Kansas. The contract for the new building was for \$608,000, but additions and changes ran the total cost to \$615,512.67. Topeka received this building through the persistent efforts of former Vice-President Charles Curtis and Senator Arthur Capper, who urged the necessary appropriation bills through Congress. They succeeded in getting the Federal Building, which resembles the National treasury building, for their hometown. It is finished in Bedford limestone and St. Genevieve golden vein marble. The building was dedicated on December 11, 1933 and was large enough to house all of the Federal offices. People involved in the construction were Frank L. Moore, construction engineer and James I. Barnes, contractor.

Creator: Dollar Portrait Studio

Date: May 02, 1932-November 01, 1933

Callnumber: FK2.S5 T.78 *34-70

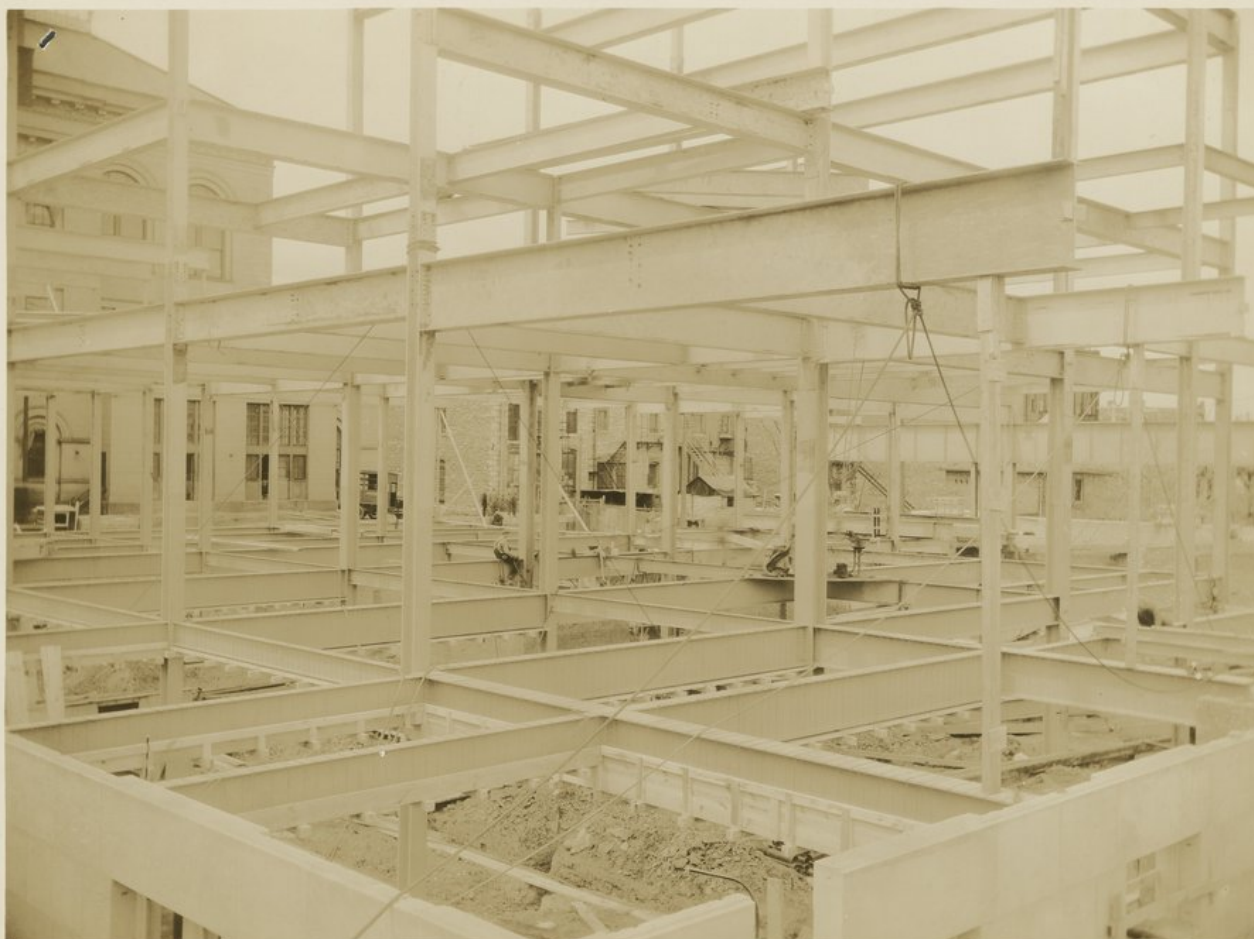
KSHS Identifier: DaRT ID: 307225

Item Identifier: 307225

www.kansasmemory.org/item/307225

KANSAS
HISTORICAL
SOCIETY

Construction on the Post Office and Federal Courthouse in Topeka, Kansas





Construction on the Post Office and Federal Courthouse in Topeka, Kansas

FK2.55

T.78

*34

New Post Office & Court House
Topeka Kansas
J.I. Barnes & Co. Contractor

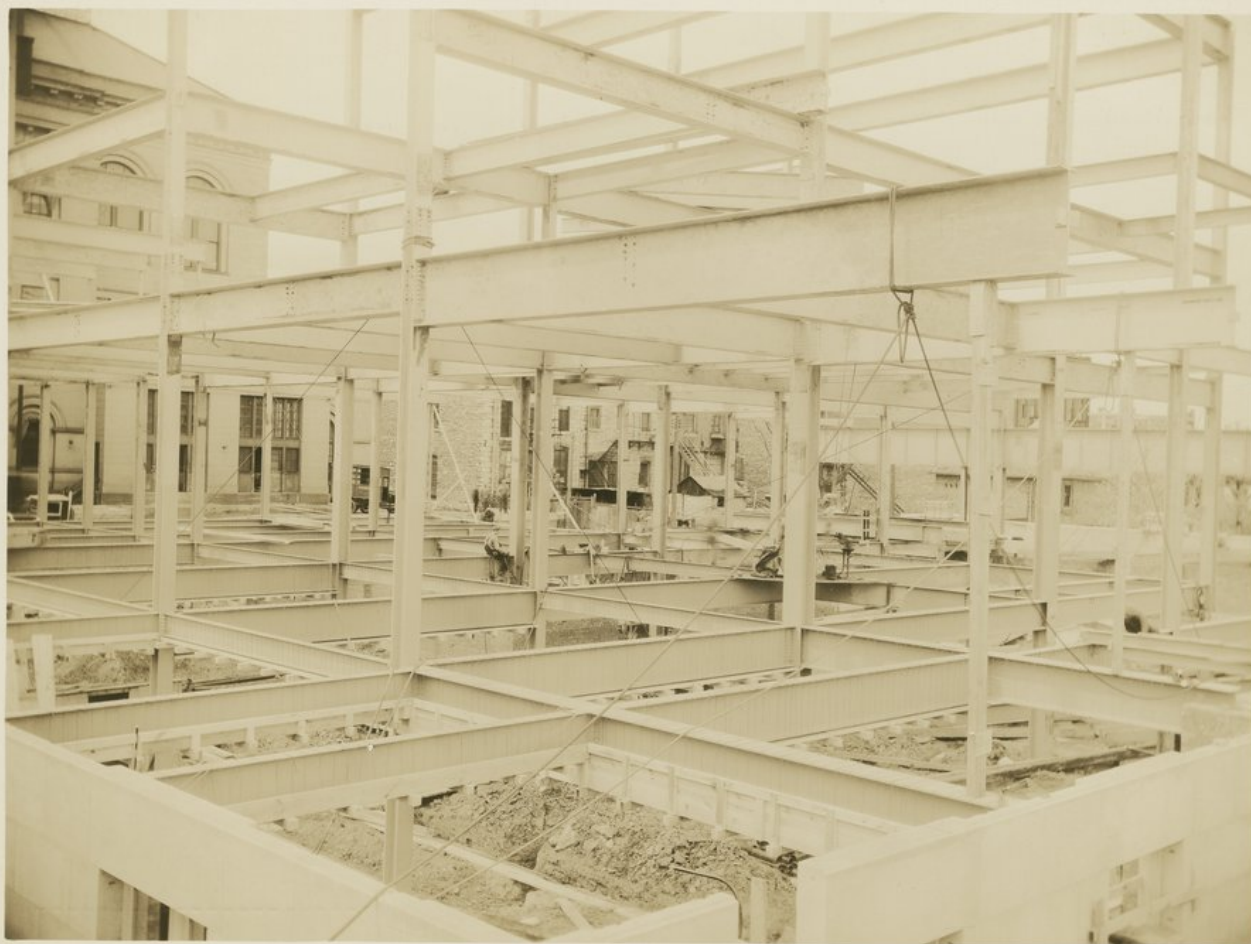
U. S. P. O. + Cb. H. Topeka, Kan. 5-2-32.
Looking N.W.

Frank L. Moore
Const Engineer.

2014-162

Taken May 2 1932
By--DOLLAR PORTRAIT
STUDIO
731 Kansas Ave. Topeka, Kans.

Construction on the Post Office and Federal Courthouse in Topeka, Kansas



Construction on the Post Office and Federal Courthouse in Topeka, Kansas

FK2.55
T.78
*35

New Post Office & Court House
Topeka Kansas
N.W. J.I. Barnes & Co. Contractor

5-2-32

2014-162

Taken May 2 1932
By--**DOLLAR PORTRAIT**
STUDIO
731 Kansas Ave. Topeka, Kans.

Construction on the Post Office and Federal Courthouse in Topeka, Kansas



Construction on the Post Office and Federal Courthouse in Topeka, Kansas

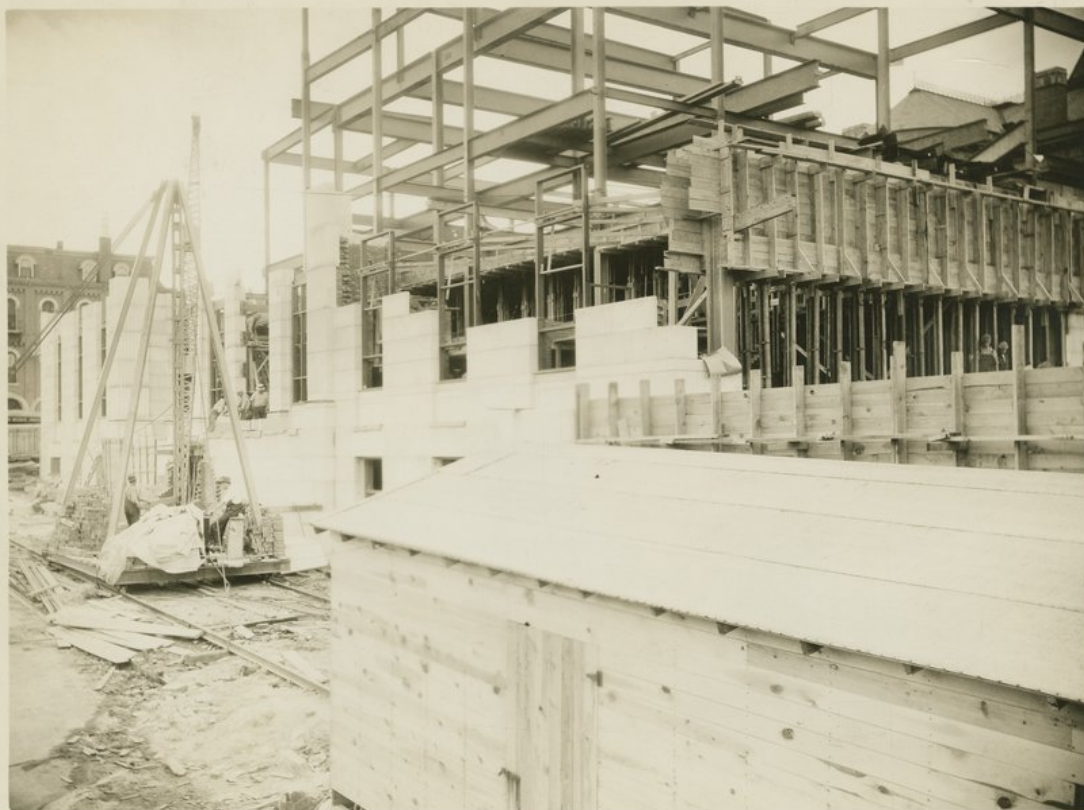
FK2. S5
T. 78
* 36

5-9-32
New Post Office & Court House
Topeka Kansas
James I Barnes Contractor
*Looking East along S. Wall
1st Floor.*

2014-102

Taken May 11 1932
By DOLLAR PORTRAIT
STUDIO
731 Kansas Ave. Topeka, Kans.

Construction on the Post Office and Federal Courthouse in Topeka, Kansas



Construction on the Post Office and Federal Courthouse in Topeka, Kansas

FK2.55

T.78

+37

U. S. P. O. + C. L. H. Topeka, Kan.

June 2-1932 - Looking S.W.

Frank L. Moore
Const Engineer.

U. S. POST OFFICE

JAMES I. BARNES, CONTRACTOR

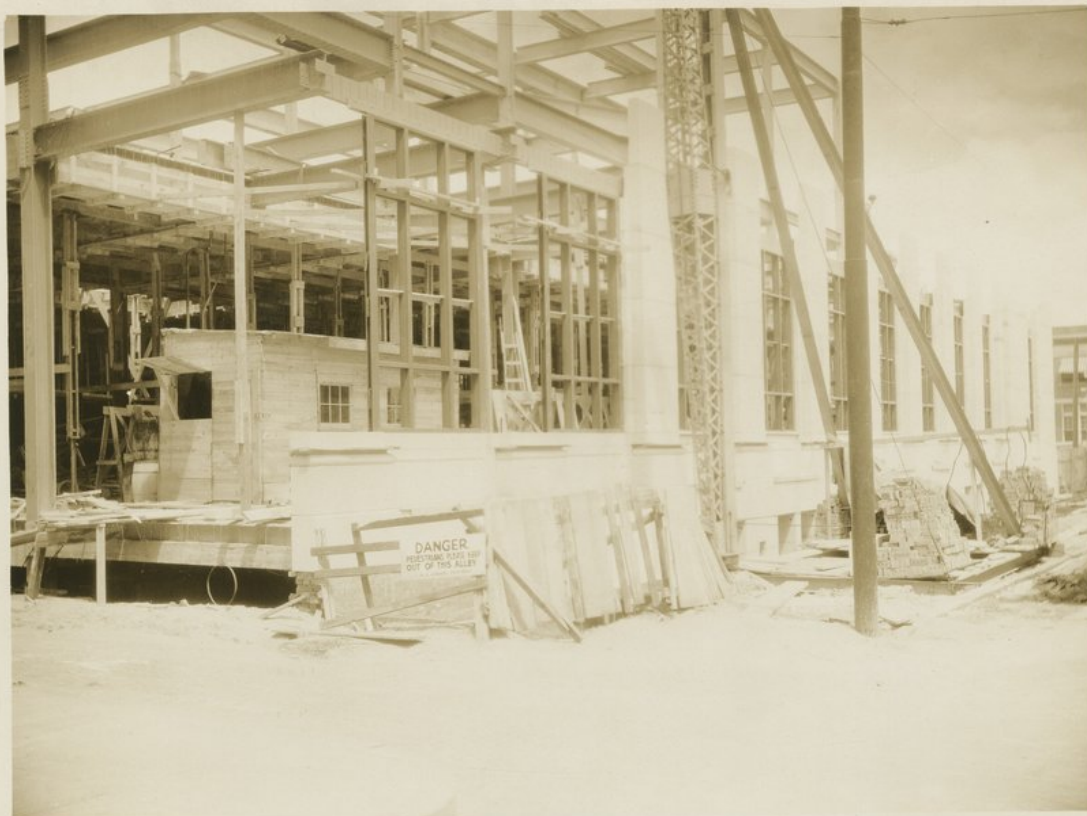
TOPEKA, KANSAS

Taken June 1, 1932

By--DOLLAR PORTRAIT STUDIO
Topeka, Kansas

2014-162

Construction on the Post Office and Federal Courthouse in Topeka, Kansas



Construction on the Post Office and Federal Courthouse in Topeka, Kansas

FK2.55

T. 78

+38

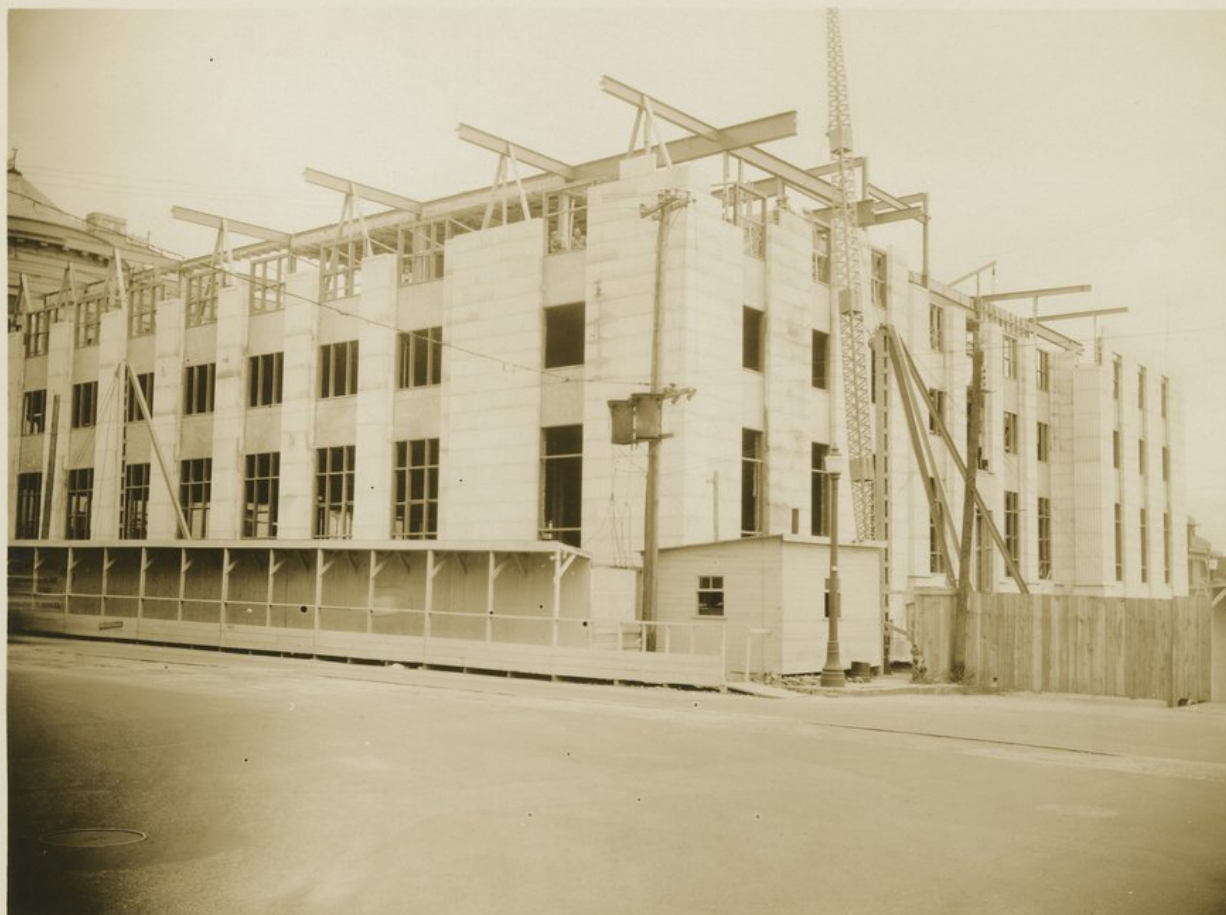
U.S. POST OFFICE
JAMES I. BARNES, CONTRACTOR
TOPEKA, KANSAS

Taken June 1, 1932

By--DOLLAR PORTRAIT STUDIO
TOPEKA, KANSAS

2014-162

Construction on the Post Office and Federal Courthouse in Topeka, Kansas



Construction on the Post Office and Federal Courthouse in Topeka, Kansas

FK2.55

T.78

*39

THE NEW POST OFFICE & COURT HOUSE
TOPEKA KANSAS
JANES I BARNES & CO. CONTRACTOR

Taken July 1 1932

By Bollor Portrait Studios

2014-162

Construction on the Post Office and Federal Courthouse in Topeka, Kansas



Construction on the Post Office and Federal Courthouse in Topeka, Kansas

FK2.55
T.78
*40

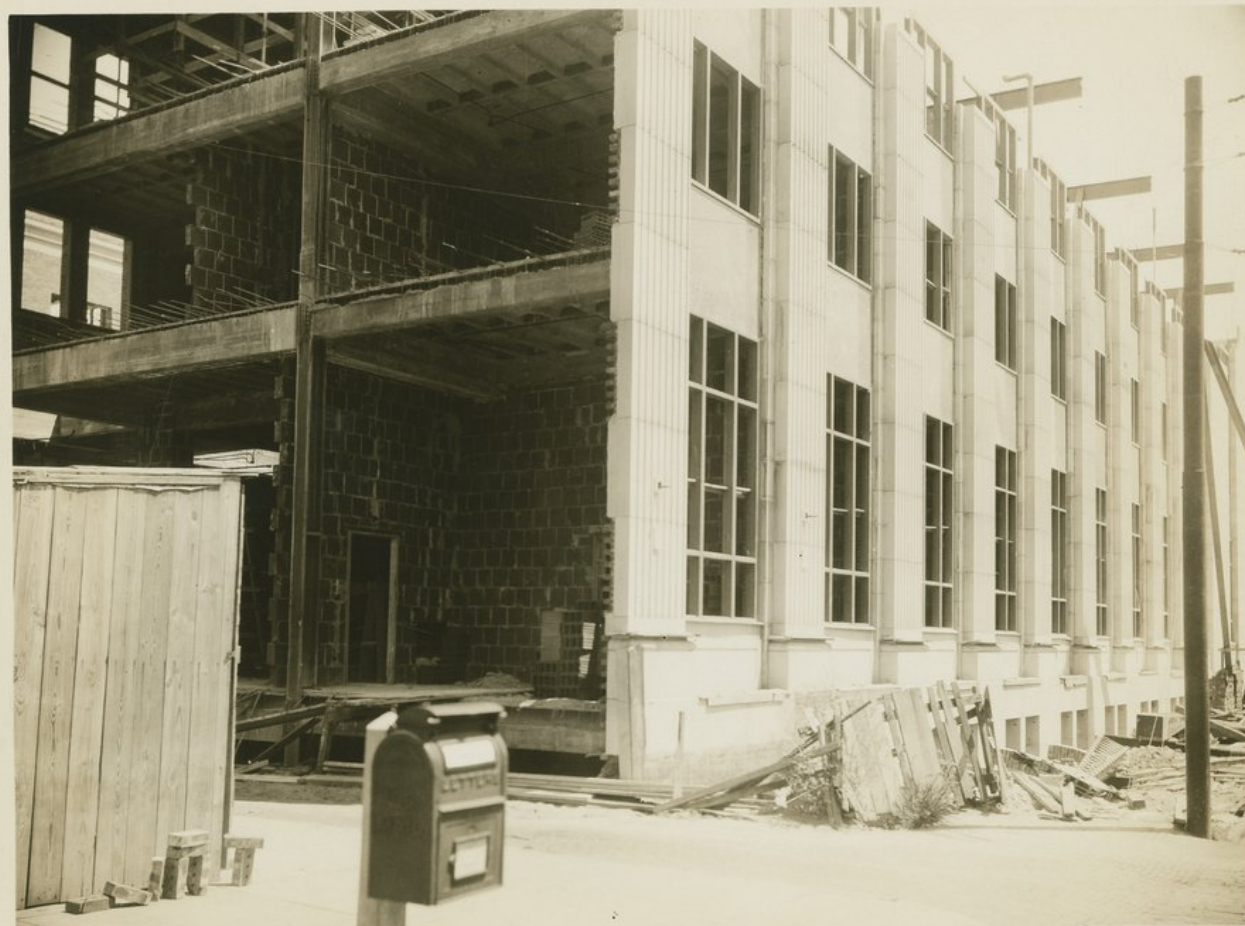
THE NEW POST OFFICE & COURT HOUSE
TOPEKA KANSAS
JANES I BARNES & CO. CONTRACTOR

Taken July 1 1932

By Dollor Portrait Studios

2014-162

Construction on the Post Office and Federal Courthouse in Topeka, Kansas



Construction on the Post Office and Federal Courthouse in Topeka, Kansas

FK2.55
T. 78
* 41

New Post Office & Court House,
Topeka, Kansas
James I. Barnes & Co., Contractor

August - 1932

2014-162

Taken Aug. 1, 1932
By DOLLAR PORTRAIT STUDIO

Construction on the Post Office and Federal Courthouse in Topeka, Kansas



Construction on the Post Office and Federal Courthouse in Topeka, Kansas

FK2.55
T. 78
#42

U. S. P. O. - Ct. H. Topeka, Kan.

New Post Office & Court House,

Aug. 1 1932. Looking S.W.

James I. Barnes & Co., Contractor

Frank L. Moon

Const Engineer.

Taken Aug. 1, 1932
By BOLLER PORTRAIT STUDIO

2014-162

Construction on the Post Office and Federal Courthouse in Topeka, Kansas



Construction on the Post Office and Federal Courthouse in Topeka, Kansas

FK2.55

T. 78

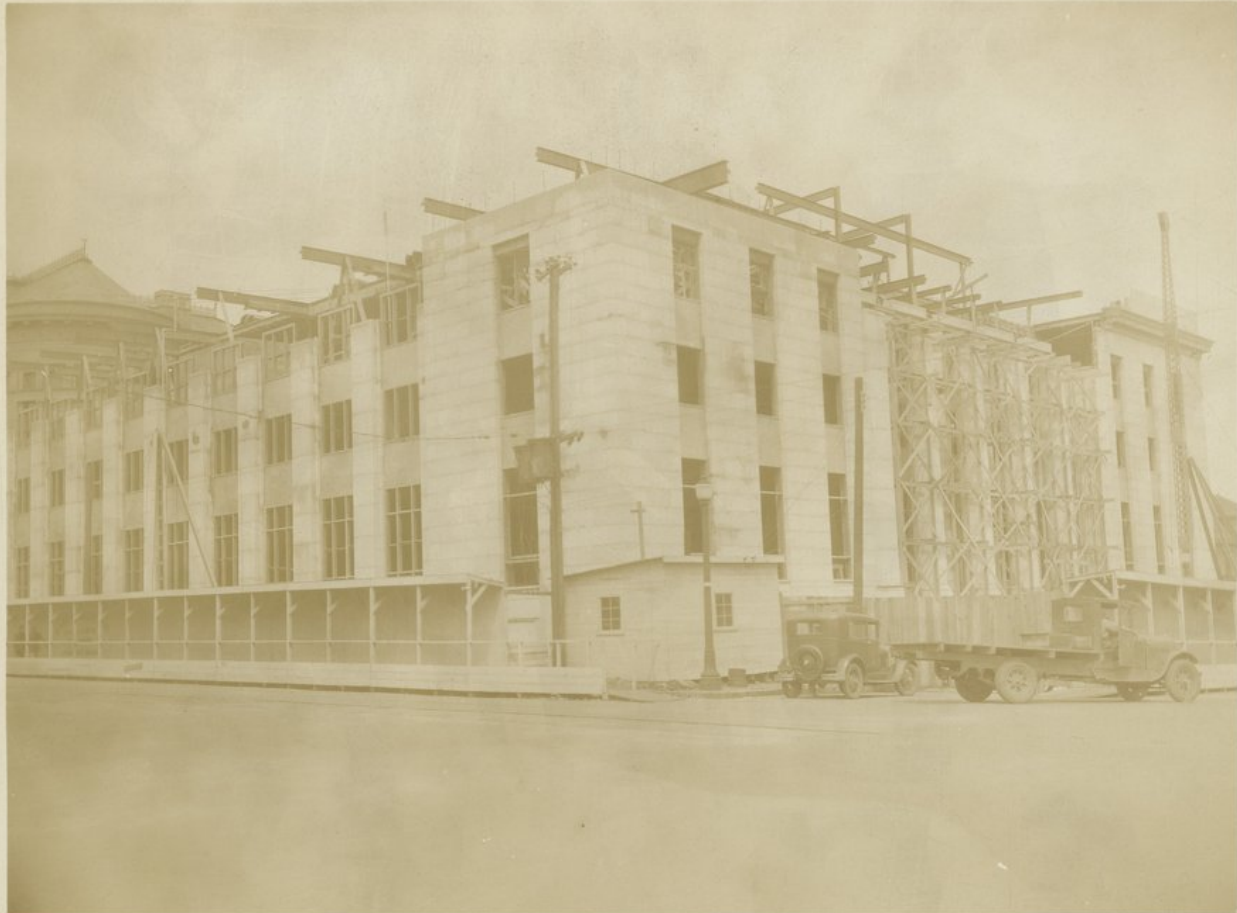
*43

U. S. P. O. - Gt. H. Topeka, Kan. USE
Topeka, Kansas
~~July~~ Aug 1 - 1932 CO., CONTRACTOR

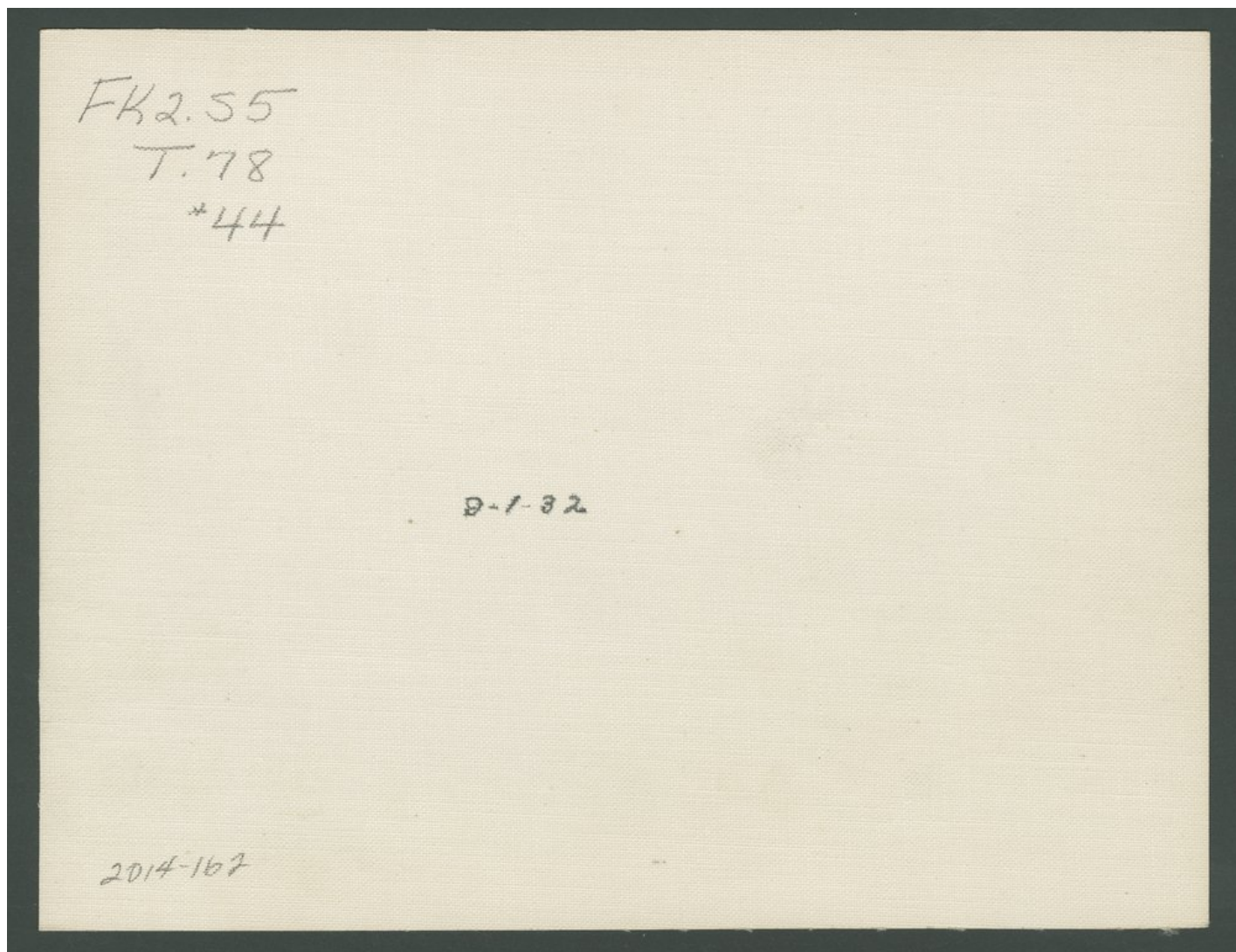
Taken Aug. 1, 1932
By DOLLAR PORTRAIT STUDIO

2014-162

Construction on the Post Office and Federal Courthouse in Topeka, Kansas



Construction on the Post Office and Federal Courthouse in Topeka, Kansas



Construction on the Post Office and Federal Courthouse in Topeka, Kansas



Construction on the Post Office and Federal Courthouse in Topeka, Kansas

FK2.55

T.78

*45

Topeka, Kan. 10-1-32

2014-162

Construction on the Post Office and Federal Courthouse in Topeka, Kansas



Construction on the Post Office and Federal Courthouse in Topeka, Kansas

FK2.55

T. 78

* 46

Topeka, Kan. 10-1-32

2014-162

Construction on the Post Office and Federal Courthouse in Topeka, Kansas



Construction on the Post Office and Federal Courthouse in Topeka, Kansas

FK2.55
T. 78
*47

U. S. P. O. & C. t. H. Topeka, Kan.
Nov 1, 1932 Looking N. W.

Frank L. Moon.
Const Engineer

2014-168

Construction on the Post Office and Federal Courthouse in Topeka, Kansas



Construction on the Post Office and Federal Courthouse in Topeka, Kansas

FK2.55

T. 78

* 48

Nov. 1 - 1932

2014-162