

The Chief is still Chief

This flyer published by the Atchison, Topeka & Santa Fe Railway Company encourages travelers to take advantage of the new luxuries added to the passenger train the "Chief." Some of the new luxuries include: a spacious lounge car, porcelain wash bowls and thick soft rugs in the car vestibules. On the backside of the flyer technical drawings illustrate the types of cars carried on the "Chief." This Native American can also be seen in Kansas Memory item number 309137.

Creator: Atchison, Topeka, and Santa Fe Railway Company

Date: February 10, 1930

Callnumber: AT & SF RR/Ry Coll., Box 883, Folder RR 883.3

KSHS Identifier: DaRT ID: 306936

Item Identifier: 306936

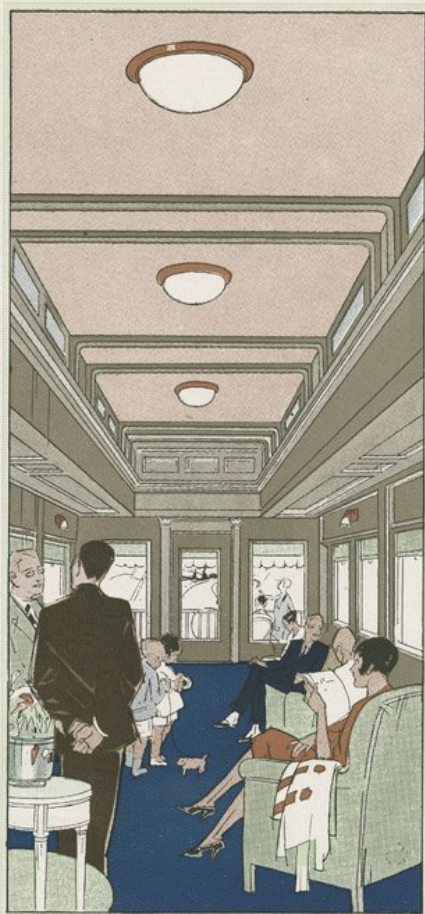
www.kansasmemory.org/item/306936

KANSAS
HISTORICAL
SOCIETY



**The Chief
is still Chief-**

[1938]



The Observation Sunparlor



Ladies Lounge - Ladies maid in attendance

New equipment throughout on **The Chief**—the finest that Pullman can make—is our first message for the **new** year.

Just to make good on our policy that The Chief always shall be Chief—extra fine, as well as extra fast and extra fare.

The “high lights” of the **new** Chief, for the **new** year, follow.

The **new** Chief for the **new** year still is Chief! And it is “Santa Fe all the way.”



Fred Harvey Dining Car



The Club Car

The "high spots" are—

—Three places where passengers may gather for recreation; most trains only have two, viz., in club and observation cars. The Chief adds a third exclusive feature—a special ten-section lounge car, placed in middle of train, next to diner. This **new** car has lounging space for sixteen persons, with two settees and tables with table lamps.

—The lounge room of the **new** observation cars on The Chief has settees, as well as lounging chairs and tables. The compartments have steel wardrobes and medicine chests.

—All the **new** cars on this **new** Chief are equipped with porcelain wash bowls.

—Ladies dressing rooms in the **new** section

Pullmans are made larger—a feature of great interest to an important class of travel.

—And thick-soft rugs (**new**) in the car vestibules.

All the above, and —

Club and observation cars; Fred Harvey dining-car service; sunparlors, ladies lounge and ladies maid; barber, valet and manicurist; also shower baths. Magazines, too, and market reports.

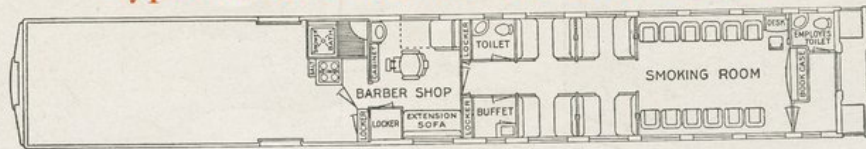
"Santa Fe all the way," running over the shortest line, Los Angeles to Chicago. Only extra fare train to the East from Southern California and the fastest. Automatic block signal safeguards and double track operation.

Assistant Passenger Traffic Manager, Santa Fe Ry.-Coast Lines.

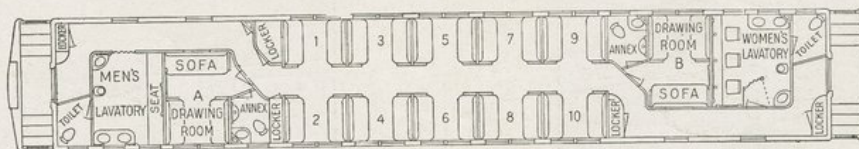
Los Angeles, Calif., February 10, 1930

The Chief is still Chief

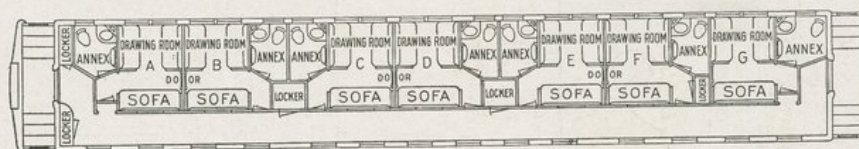
Types of Cars Carried on **The Chief**



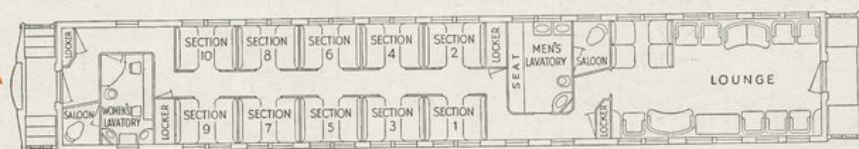
The Club Car



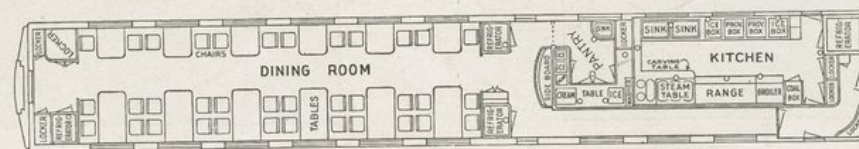
Car No. 207—Ten Sections - two Drawing rooms



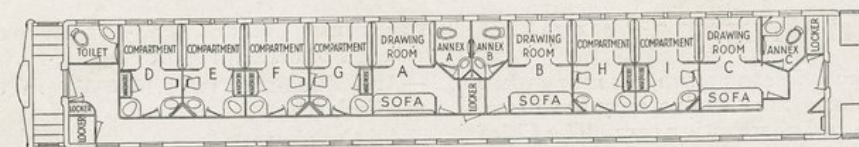
Car No. 206—Seven Drawing rooms



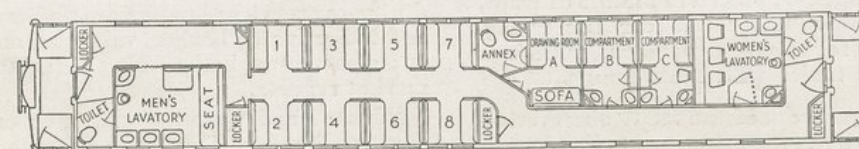
Car No. 204—Ten Section Lounge Car



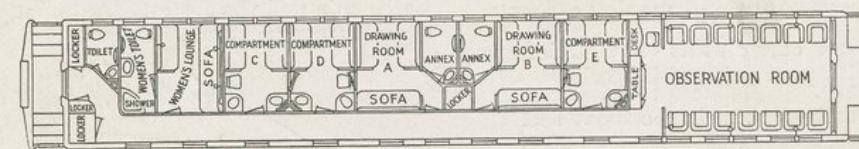
The Dining Car



Car No. 202—Six Compartments - three Drawing rooms



Car No. 201—Eight Sections - one Drawing room - two Compartments



Car No. 200—Three Compartments - two Drawing rooms - Observation