

Camp of the Peace Commissioners at Medicine Lodge Creek

A copy of the painting by Hermann Stieffel titled, Camp of the Peace Commissioners, which depicts the location of the Medicine Lodge Creek treaties with various Indian tribes in late October 1867. The original painting can be found at the Smithsonian Institution. Funds for digitization provided by Mr. Steve Peckel in memory of William Chalfant.

Creator: Stieffel, Hermann

Date: 1867

Callnumber: E83 .866 *31

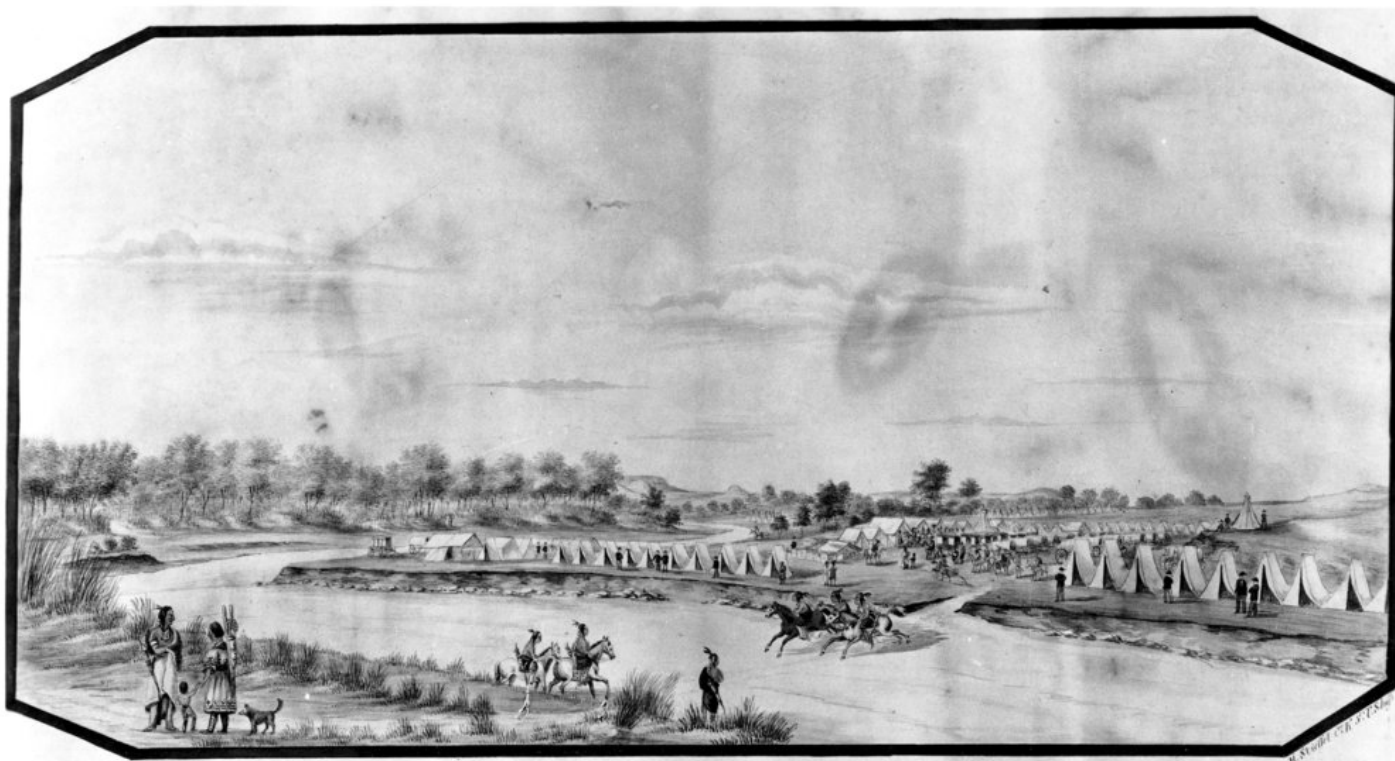
KSHS Identifier: DaRT ID: 305113

Item Identifier: 305113

www.kansasmemory.org/item/305113



Camp of the Peace Commissioners at Medicine Lodge Creek



*Camp of the Peace Commissioners
at Medicine Lodge Creek.*