

## Rolla Clymer correspondence

### Section 617, Pages 18481 - 18510

This series of the Rolla Clymer collection includes sent and received correspondence arranged chronologically beginning in 1909. With few exceptions, the correspondence provides a continuous and very complete view of his activities. Much of the earliest correspondence in the Clymer collection pertains to information about the College of Emporia for the period Clymer was a student there. Scattered throughout the remainder of the correspondence is information about Emporia athletics and alumni activities and letters with former classmates. From 1914 to 1918, Clymer was editor and manager of the Olathe, Kansas, Register. In 1918, Rolla Clymer moved his young family to El Dorado, Kansas, where he became editor and manager of the El Dorado Republican. Except for a six month hiatus in 1937 as editor and manager of the Santa Fe New Mexican in Santa Fe, New Mexico, Clymer served the remainder of his professional career in El Dorado.

In his later years, Clymer devoted much of his time to efforts to preserve the Kansas Flint Hills region which he dearly loved. In addition to newspaper editorials, he wrote and published numerous widely circulated articles and poems about the Flint Hills. Perhaps his best known tribute was his poem "Majesty of the Hills," which helped earn him the designation as Poet Laureate of the Flint Hills. Rolla Clymer died on June 4, 1977, having been the editor of the El Dorado Times for fifty-nine years. For a complete contents list of the Rolla Clymer collection, see the External Links below.

Date: 1909-1977

Callnumber: Rolla Clymer Coll. #9, Box 1 - 49

KSHS Identifier: DaRT ID: 229011

Item Identifier: 229011

[www.kansasmemory.org/item/229011](http://www.kansasmemory.org/item/229011)

## Rolla Clymer correspondence

May 4, 1939

Mr. Kenneth A. Green,  
Wichita, Kansas

Dear Mr. Green:-

Your note for \$100 on the platen press we sold you, together with interest charges of \$6.00, will be due on May 28. Statement is enclosed for your attention.

I am wondering if you will be in a position to take up all of this note, or a substantial portion of it, on the due date. If possible for you, we would like to have this item cleared from our books.

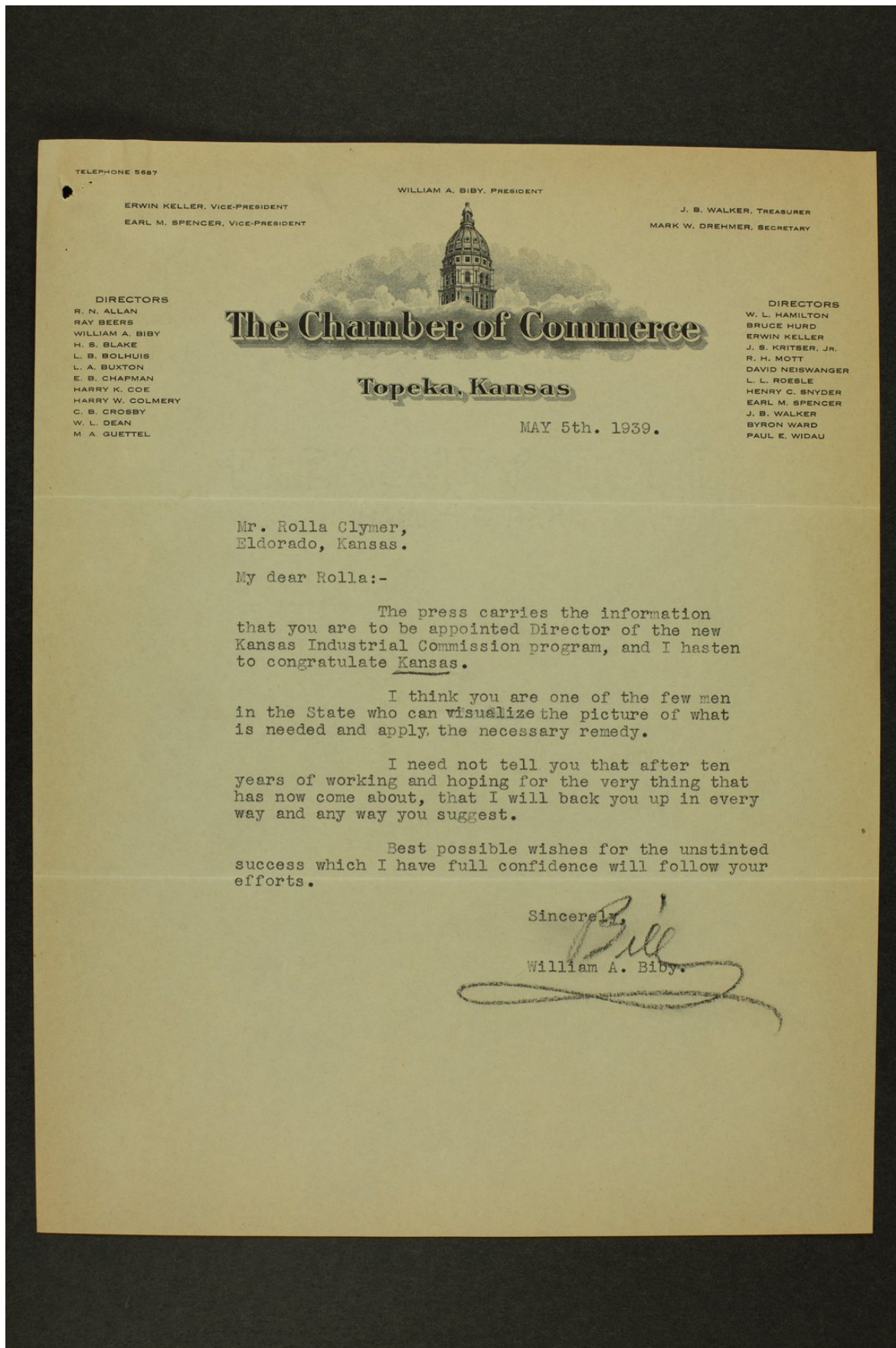
I have stopped twice to see you in recent weeks but you were out each time I called.

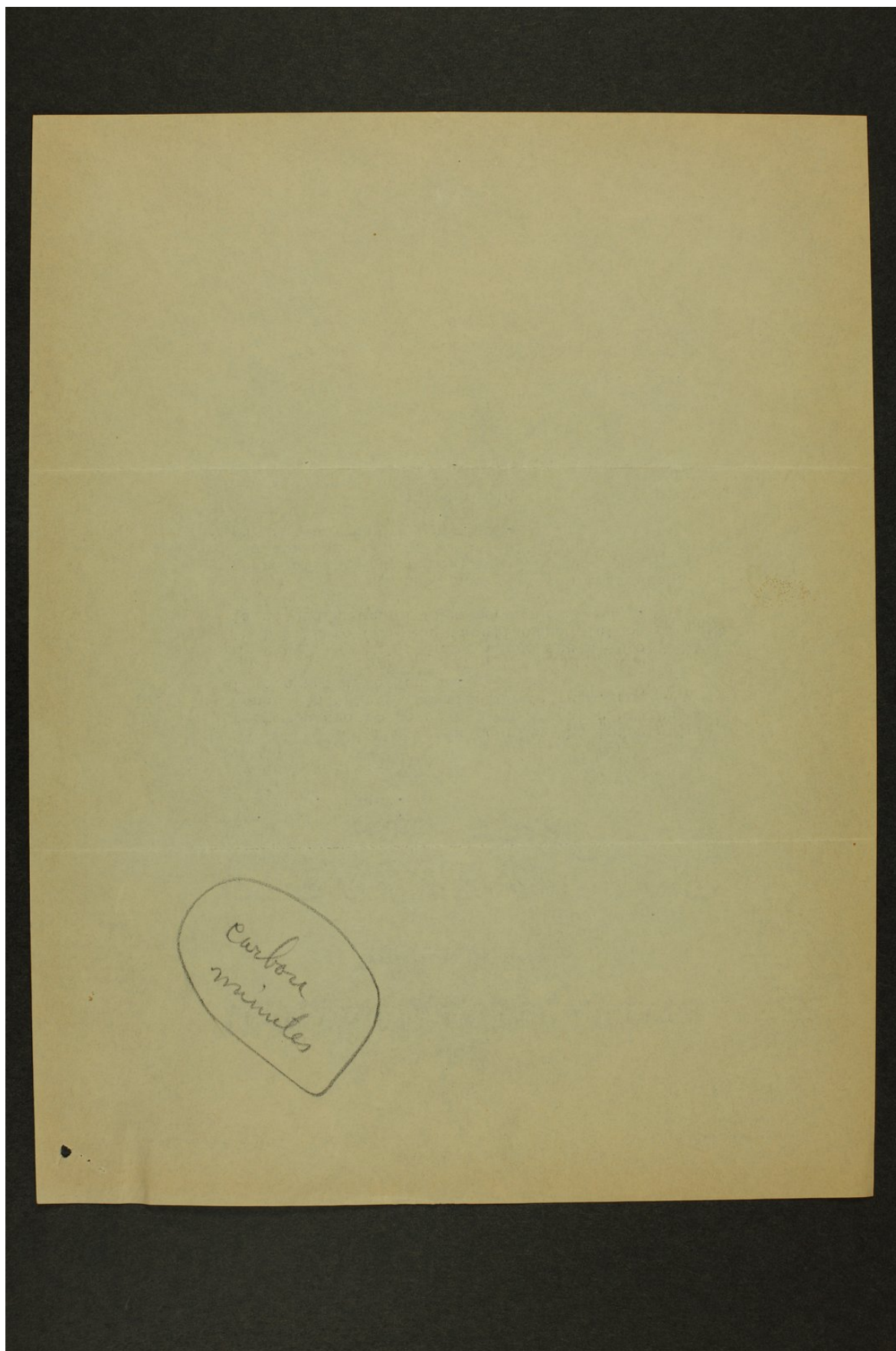
I will appreciate hearing from you at your earliest convenience.

Very truly yours,



## Rolla Clymer correspondence









## Rolla Clymer correspondence

My Dear Rolla:-I must have been snoozing too hard when that meteor with blazing tail went over carrying your name as winner but regardless of all that e'en though its only a small pñce of pie, comparatively speaking for services rendered, yet I trust the one talent may materialize into great deeds for the good of our glorious Commonwealth. Heres wishing yãu and your associates much success,

I am  
Sincerely Yours,

ElDorado, Kansas, May6 1939.



DR. T. A. LEACH

NO. 121-2 EAST SECOND  
HUTCHINSON, KANSAS

5/6/39.

Mr. Rolla Clymer,  
Eldorado, Kansas.

Dear old friend, Rolla:-

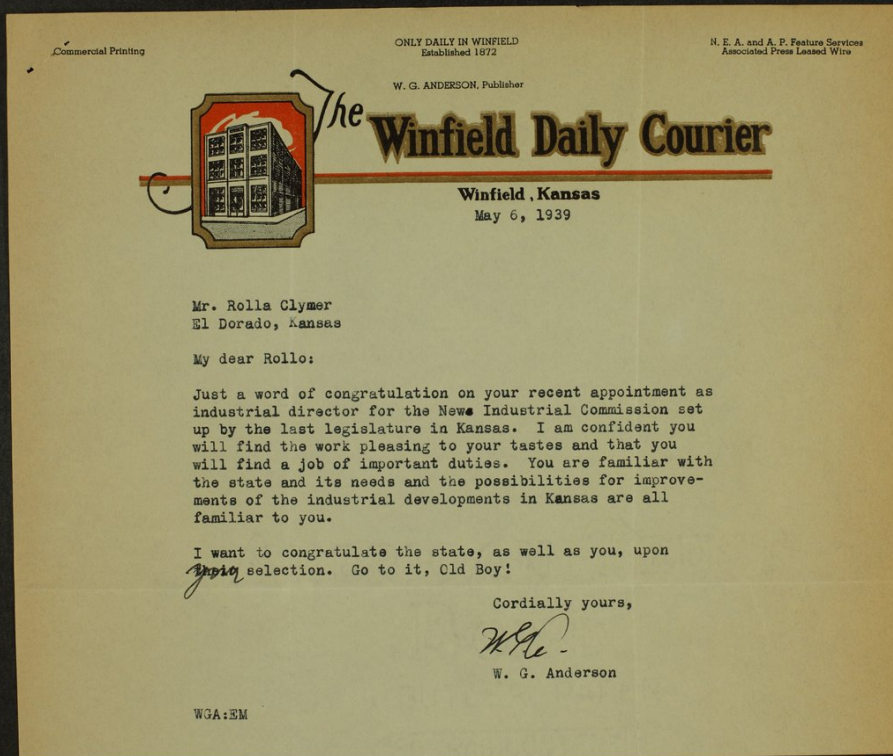
Congratulations, Old Timer. Am wishing you the greatest of success. Still believe I could put you on your back, but I would want a good soft lawn, just in case.

Cordially yours,

*T. A. Leach.*



## Rolla Clymer correspondence



## Rolla Clymer correspondence

LAW OFFICES OF  
LIGHT & LIGHT  
203 LIGHT BUILDING  
LIBERAL, KANSAS

G. L. LIGHT  
AUBURN G. LIGHT

May Sixth,

1  
9  
3  
9

Mr. R. A. Clymer,  
C/o Eldorado Times,  
El Dorado, Kansas.

Dear Rolla:

Congratulations on your appointment as Director of the Kansas Industrial Development Commission, which as I understand places you as Chief Publicity Agent pertaining to the development of Kansas resources.

I am sure that Kansas is now due for publicity and propaganda that will make Hitler and his Regime ashamed of themselves, assuming of course that there are no powers that be who will have the authority to censure your work and eliminate any part thereof.

In all seriousness, I am very glad to see you in this position.

I enjoyed very much your write-up of your recent trip out here and showed it to several of the boys. I am certainly glad you came at the time of year that you did, for at the present time it looks like Mother Nature is taking our prospects away from us by leaps and bounds every day between sunrise and sunset. We have had severe freezes, electric winds, hot winds and are squawking somewhat due to drouth. The Government Agents tell us that hoardes of grasshoppers are threatening to swarm down upon us, which added to the flock of pests that come out from Washington and other Governmental centers, makes the small boys in the short grass country wonder just what is going to happen to them as between our Government and the Supreme Authority over which neither we nor the Government have any control.

Your visit here tended to put a lot of confidence and pep into Claybaugh and added a lot to my own confidence. The boys seem to be getting along fine and the operation of the paper has been showing a nice profit ever since we merged them. If we do not lose all of our crops we should be able to show a nice profit at the end of this year which would give



## Rolla Clymer correspondence

G. L. LIGHT  
AUBURN G. LIGHT

LAW OFFICES OF  
LIGHT & LIGHT  
203 LIGHT BUILDING  
LIBERAL, KANSAS

R. A. Clymer, . . . . . 5-6-1939, . . . . . 2

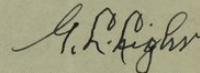
us an entirely different looking statement and be far more  
inducive to some newspaper man with some money to buy the  
lay-out.

I went to Wichita and undertook a little re-financing  
which I succeeded in finding at our option, but it would cost  
us too much in my opinion. Therefore, we are taking care  
of the matter within our own organization, which fortunately  
we happen to be able to do.

I would be glad if you would advise me if you intend  
to have headquarters, and be in them, at Topeka, giving me  
the location or address. I expect to attend the Bar Meet the  
last of this month and would enjoy a visit with you at that  
time if you happened to be in the Capital City.

With kindest personal regards, I am,

Yours very truly,



Of LIGHT & LIGHT

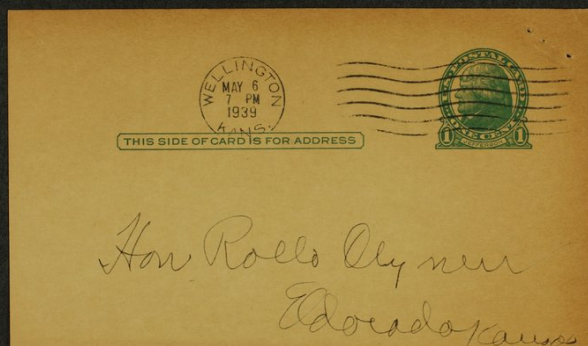
GLL\*T

## Rolla Clymer correspondence

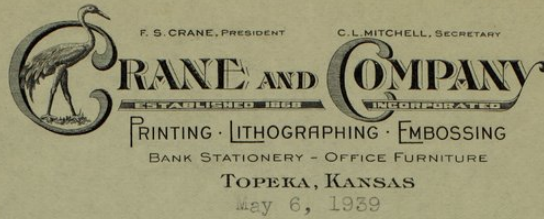
The Governor shows rare good  
judgment in your appoint-  
ment - You will not be led  
astray by every "mirage"  
Ed. Haeuney



## Rolla Clymer correspondence



## Rolla Clymer correspondence



Mr. Rolla Clymer, Director  
Industrial Development Commission  
State House  
Topeka, Kansas

Dear Rolla:

What did I tell you? I says, "What did I tell  
you?"

Yours for a whole lot of things,

CLM C

*Chas.*



## Rolla Clymer correspondence

GENERAL EXCELLENCE CITATIONS  
COUNTRY HOME NATIONAL CONTEST, 1936  
NATIONAL EDITORIAL ASSOCIATION, 1934

"BEST KANSAS WEEKLY," FIRST, 1937; SECOND, 1938  
"FRONT PAGE-OF-THE-MONTH," PUBLISHER'S IDEA EXCHANGE, 1936  
MEMBER CASEY'S ALL-AMERICAN NEWSPAPER ELEVEN, 1930

NATIONAL EDITORIAL ASSN. AWARDS  
CIRCULATION PROGRESS, FIRST, 1931  
CLASSIFIED PAGE, SECOND PRIZE, 1938

### THE BELLEVILLE TELESCOPE

BELLEVILLE, KANSAS

LUMAN G. MILLER  
EDITOR

Salina, Kansas  
May 6, 1939

Mr. Rolla Clymer,  
El Dorado, Kansas,

Dear Rolla:

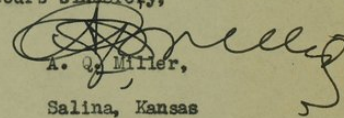
Congratulations upon your appointment as executive head of the Industrial Development Commission. This work will give you a real outlet for your energy and loyal Kansas spirit.

I did some lobbying for this bill and was asked by interested parties at the time to give it some publicity, which I was glad to do.

As Oscar Stauffer says, in my opinion, it should be made a long-time program, as under the present appropriation you can only scratch the surface. Probably it is the beginning of a more comprehensive program.

With kind personal regards, I am,

Yours sincerely,

  
L. G. Miller,  
Salina, Kansas

GREATEST PAID CIRCULATION OF KANSAS WEEKLY NEWSPAPERS

## Rolla Clymer correspondence

82

PROGRESS IN KANSAS

### What's The Matter

## With Kansas?

*An Editorial by A. Q. Miller in The Belleville Telescope*

EDITORS NOTE: The bill now pending in the Kansas Legislature, to which Mr. Miller refers is Senate Bill 115. This bill originally called for an appropriation of \$5,000 up to June 30, 1939; \$110,000 for the fiscal year ending 1940; and \$115,000 for the fiscal year ending June 30, 1941. The bill was amended in Senate Committee on Ways and Means, reducing the appropriations to \$120,000 for the biennium or \$60,000 per year. As amended, the bill passed the Senate on February 24 and is now in House Committee on Ways and Means.

KANSAS must stop exploiting, advertising and boasting about her liabilities, and spend a little more time telling the world about the state's wonderful resources and opportunities. Other states capitalize, not only on their assets, but actually publicize and sell their liabilities.

No state in the union has more diversified natural resources than Kansas, touching every phase of agricultural, mineral and industrial life—but Kansas has done nothing about it, except to mine the soil and waste her other natural resources, thereby drawing upon her capital assets. It's time for Kansas to take stock and plan to conserve her manifold natural resources and consider a program of industrial development and stop sending her raw materials to eastern industrial centers, there to be manufactured into finished pro-

ducts and shipped back to Kansas for consumption.

Kansas lost one per cent of her population last year, and this loss was from 81 out of 105 counties and was not confined to any one section of the state. The rural section of Kansas has exactly the same population it had in 1890. Obviously something is wrong and something should be done about it.

For one thing Kansas must stop glorifying her dust storms, blizzards, cyclones and grasshoppers, exaggerating them by putting them on postcards and mailing them thruout the country. Kansas must quit bragging about these things, quit magnifying her eccentricities and parading them before the world in picture, story and song, and count her blessings instead. Kansas thought it was smart to "kid" her eastern cousins about these things, but it hasn't paid dividends—it actually has proved a liability, because easterners have taken up these stories, magnified them until what Kansans thought was a joke has proved a boomerang and cost the state in population and business.

As a further example of our shortsightedness, a few years ago we boasted about our dirt roads and told the world Kansas was still in the "mud." Today, while the state has 8,000 miles of surfaced highways and at least five surfaced east-west highways and four surfaced north-south highways, the tourists shun the state and Kansas is losing millions of dol-



## Rolla Clymer correspondence

### PROGRESS IN KANSAS

81

be widely adapted outside the state. It is conservative to say that these productions have proved fully as valuable outside the state of Kansas as within.

If, however, consideration is given to the value of these six accomplishments to the state of Kansas alone for the past year (1938), it will be found to be as follows:

Accomplishments	Value
Linota flax .....	\$ 76,000
Blackleg vaccination .....	132,000
Atlas sorgo .....	224,000
Kanota oats .....	3,479,000
Kawvale wheat .....	3,389,000
Tennmarq wheat .....	6,410,000

Total .....\$14,710,000

The return from the investment of approximately \$300,000 of federal and state funds for research in agriculture has been over fourteen million dollars this past year from six accomplishments upon which it is possible to place a monetary value. These six accomplishments, as has been shown, are but a few of the many accomplishments of the station during the past 50 years of its history. It is clearly evident that money made available for research properly conducted is an investment which will return many times the amount of money invested in it.

\* \* \* \* \*

AGRICULTURAL research up to the present time has been concerned chiefly with the problems of

production until within the past 15 years when attention has been devoted to the problems of marketing, land-use, and rural life. It has only been within the past three years that funds have been made available with specific authorization for their use in research to develop commercial uses for agricultural products. The funds available to the agricultural experiment stations are still most inadequate for this purpose. The last Congress, however, made available to the United States Department of Agriculture \$4,000,000 for the purpose of establishing four regional laboratories to attempt to develop the industrial uses for agricultural products. The laboratory to be erected to work on problems of the north central states including Kansas has been located at Peoria, Ill. This laboratory will devote major attention to work upon the industrial uses of cereal crops. It is expected that there will be a close coordination of the work of this laboratory with such work as may be undertaken on this problem by the agricultural experiment stations of these states.

If adequate funds are supplied for research upon industrial uses for agricultural products, it is reasonable to expect the results from such research to compare favorably with the results that have been secured in other lines of research in agriculture. This new field of research is worthy of most careful exploration.

### Atchison's Oil Day

OVER 500 persons attended the Oil Day Party held on February 2 by Atchison business men. Dr. Raymond C. Moore, state geologist and his assistant, Dr. Kenneth K. Landes spoke on the oil possibilities in the north-eastern Kansas sector of the now-famous Forest City basin.

## Rolla Clymer correspondence

PROGRESS IN KANSAS

83

lars annually because of this adverse publicity.

\* \* \* \* \*

YES, it is time Kansas turned her well known talent to constructive objectives to do a little exploiting of the state's resources and opportunities, to tell the world that Kansas is high in literacy, has the largest student enrollment in college per capita of any state in the union, whose colleges and universities attract students from all over the nation, and give to the world some of its greatest artists, authors, scholars and statesmen, as well as business executives. Many of the greatest industries in this country are manned and captioned by Kansas boys. Some of the world's greatest athletes came from Kansas, and in every war Kansas has furnished more than her quota of fighting men. She has fewer millionaires and fewer paupers than any other state—but oodles of common people that Lincoln used to talk about.

First in wheat and flour production, third in potential oil production, the largest gas pool in the world, fourth in corn and alfalfa, fourth in meat packing and a variety and extent of mineral resources not equalled anywhere between the Mississippi river and Rocky mountains. But we are not doing much about it—just coasting along, telling the world about her troubles.

Why doesn't Kansas do something about it? Twenty-eight other states have legislative appropriations, promoting and publicizing to the outside world their glories and opportunities—literally shouting about their wares, while Kansas is barely speaking above a whisper about hers.

A bill is now pending in the Kansas legislature to create an agency to publicize Kansas in its true light and give to the outside world a true picture of the state. A companion bill should be introduced to make it a misdemeanor for any individual or publication to exaggerate and magnify the state's misfortunes.

### Atchison Expands Industrially

ON February 1, a new ladies' coat and suit factory, the Midwest Coat and Suit Company, opened its doors in Atchison. Already the company is employing 30 persons and feel that they will have at least 75 employed by summer. Mr. Irwin Adel is president and Mr. Harold Hammer is Secretary-Treasurer.

This company was secured for Atchison by the industrial committee of the local chamber. It is housed in the building formerly occupied by the Steinite Radio Company and within a short time, the company intends to occupy the entire building, which contains 28,000 square feet of floor space.

The company manufactures a popular priced ladies' coat.

The Blair Milling Company of Atchison, is making improvements in their plant and will within a short time, be manufacturing puffed wheat and other grain products. The production of these new foods will take up the slack in employment during the time when they are not running their pancake flour mill, and also is increasing the industrial utilization of Kansas farm products.



## Rolla Clymer correspondence

84

PROGRESS IN KANSAS

### Around Headquarters

*Parker on NBC*  
JOHN H. Parker, Director, Kansas Wheat Improvement Association, Manhattan, was a guest on the Good-year Farm Radio News program over the Blue Network of the National Broadcasting Company, on January 2. Mr. Parker was interviewed by Bob Clough.

*Grass Important Crop*  
ACCORDING to L. C. Williams, Assistant Director, Kansas State College Extension Service, grass—the first Kansas crop—still is one of the state's most important resources. Recognition of that fact is growing as farmers endeavor to restore the grazing capacity of range land depleted by drought and overgrazing. Last year, more than 7,500 farmers practiced deferred grazing—the practice of keeping stock off the grass during the growing season and thus permitting it to produce seed and store up strength in its roots. That was an increase of 4-100 over the number of farmers who used deferred grazing in 1937.

*Wilson in Readers Digest*  
THE current issue of Readers Digest contains a very interesting article condensed from Current History, regarding the Kansas Legislative Council, and manager Samuel Wilson's efforts in the establishment of this new venture in government. Dr. F. H. Guild, Director of the Research Department of the Council, is also mentioned in the article.

Readers Digest condensed their story from an article by Fred C. Kelly, entitled "Kansas and the Well-Made Law."

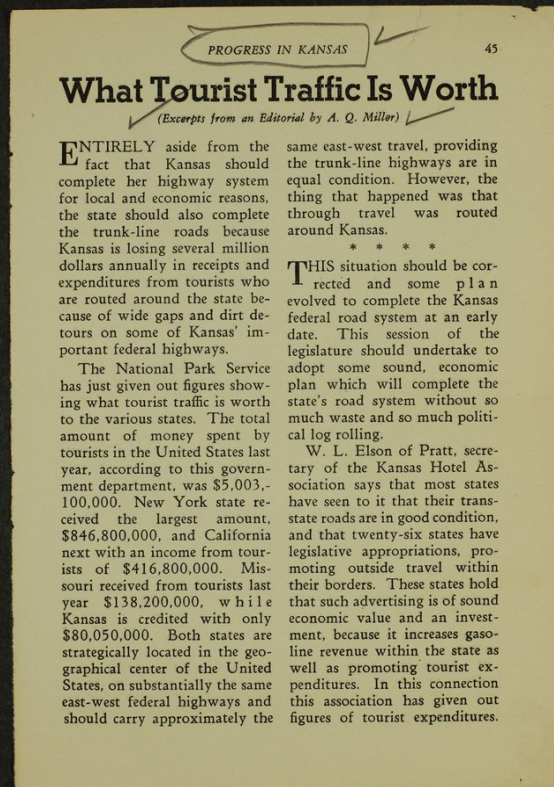
*Aids Patrons*  
THE Kraft-Phoenix Cheese Corporation is helping their patrons secure good cows at fair prices, by shipping in fine dairy stock to Emporia. The first car arrived January 19. These cows have been sold and additional numbers will be sent in later, or as the demand justifies. The banks in the area where the company buys milk are financing the farmers.

Mr. A. J. Riddle, general manager of the company's southwestern division with headquarters at Denison, Texas, said while on a business trip to the Emporia plant: "We are interested of course in increasing the flow of milk into our Emporia plant, which is based on the continued growth and demand for Kansas Cheese. Quality milk and quality cheese go hand in hand in building up the production of milk in this territory. It will be our plan to render as much help as we can to the sound dairy program for our producers."

The Kraft-Phoenix Cheese Corporation hopes to expand production at the Emporia Plant. Other Kansas plants of the company are located at Oswego, Larned and McPherson.

*Tax Publication*  
THE Planning Board has issued a new pamphlet entitled, "Collection of Personal Property Taxes in Kansas," which is one of a series of Planning Board publications dealing with the subject of public finance. This report is issued primarily for the purpose of calling attention to the wide variation of collection methods and results obtained in the various counties, all of which operate under

## Rolla Clymer correspondence





## Rolla Clymer correspondence

46

### PROGRESS IN KANSAS

The tourist dollar is divided as follows: Twenty-five cents for retail purchases, such as clothing, drugs, souvenirs, etc. Twenty cents for hotel, tourist camp and other lodging. Eight cents for amusements. Ten cents for gasoline and oil. Six cents for miscellaneous.

These figures are based upon a daily expenditure of \$10 per tourist. If they are correct and if Kansas actually collects \$80,-

050,000 from the tourists and Republic county received its share it would mean \$800,000 annually to the county. Whatever the amount the tourist spends annually in Kansas it is an impressive sum, and the fact that other states organize to go after it and spend thousands of dollars annually to attract the tourist is sufficient reason to cause Kansas to pay some attention to the subject.

### California Fruits and Vegetables Re-Iced At Hoisington

CALIFORNIA perishable fruits and vegetables bound for eastern markets, pause in Hoisington to be re-iced. Passengers enjoying air-conditioned trains on the Missouri Pacific Railroad, also owe their comfort to the Prairie Icing Company of Hoisington.

This company manufactures ice for retail trade in Hoisington, Great Bend, Russell and numerous other towns in that vicinity. Their capacity is 85 tons daily and operate a large portion of the winter time in order to fill their storage of 4200 tons, to meet the heavy requirement during the rush fruit season. Fifty to sixty employees work for the Prairie Icing Company.

### Platform Reading Material Published in Kansas City

IN 1917, while teaching public speaking, Mr. Raymond Youmans, president of the Raymond Youmans Publishing Company, Inc., received inquiries for short reading material which was suitable for platform use. It occurred to him that the demand was sufficient to support a publishing company which devoted itself to the publication of such material. In 1919, when he returned from the army, Mr. Youmans organized the company. In 1928 the company was incorporated and began buying original manuscripts of short readings.

This Kansas City, Kansas company buys and publishes original manuscripts of short readings for platform use, church use, school use, etc. To date, the company has published over 2,500 readings, monologues, one act plays, books, etc. These are sold throughout the United States and in many foreign countries.



He was  
didn't  
It  
his

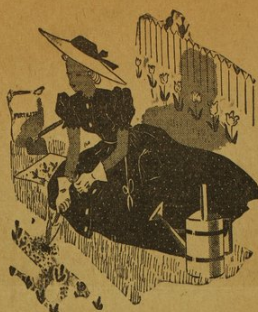


SALINA JOURNAL, THURSDAY, MAY 4, 1939

PAGE FIFTEEN

## Change to Electric Cooking NOW!

Give Yourself  
Time to Enjoy  
the Sunshine  
This Spring!



*Be Sure to See  
the Attractive  
Modern*

**ELECTROMASTER**

**Electric Range  
Now on Display**

**At Our  
Office**

•

Don't be a slave to a  
cook stove and a hot  
kitchen anymore. In-  
stall an electric range  
and enjoy the freedom  
this modern method  
of cooking provides.

representative  
How You  
Beautiful  
ter Range

**95 PER  
MONTH**

Electricity in  
find it is  
an Electric

**RANGES MAY BE PURCHASED FROM THE  
ELECTRIC APPLIANCE DEALERS**

ance Co.

ance Co.

& Co.

Phillips Radio & Electric Co.

Riley Appliance Co.

Salina Electrical Appliance Co.

Stiefel Stores Co.

## Rolla Clymer correspondence

THE KANSAS STATE TEACHERS COLLEGE  
OF EMPORIA

FOUNDED 1863 AS THE KANSAS STATE NORMAL SCHOOL

OFFICE OF THE PRESIDENT

May 6, 1939

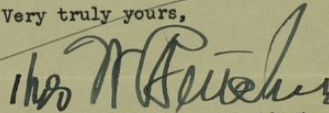
Hon. Rolla Clymer,  
El Dorado, Kansas.

My dear Rolla:

I am delighted with your selection to head the new Industrial Development Commission. The only thing about the whole procedure that I dislike is the Kansas City Star's reference to you as a veteran newspaper man. This veteran thing simply won't do and must not be taken seriously. If anybody can turn the trick on this Industrial Development you can do it and I am for you.

With best wishes, I am

Very truly yours,



Thomas W. Butcher, President.

TWB CN





UNITED LIFE BUILDING

### THE UNITED LIFE INSURANCE COMPANY

OF KANSAS

HOME OFFICE --- SALINA, KANSAS

6 May 1939

Mr. Rolla Clymer, Director  
Industrial Development Commission  
State House  
Topeka, Kansas

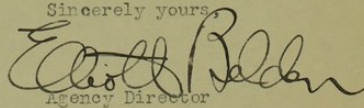
Dear Rolla:

Looks to me like the Industrial Development Commission has made a damn good start in selecting a Director. It's going to be a tough job, Rolla, but you've got what it takes to whip just such jobs as this one. In fact, I'll even support you for governor - or president!

In encouraging the development of Kansas, don't overlook one of your best bets - Kansas owned life insurance companies. Quite modestly I'll have to admit that our Company seems to be getting its share of the business. A comparative report for 1938 is attached.

If ever you need anything where I can be of any help to you - from the world's biggest sack of flour to a little dough - just say the word and I'll be honored to have you call on me. Best of luck in making more millions for dear ole Kansas!

Sincerely yours,



Agency Director

P. S.

United Life is the ONLY Kansas owned  
Old Line Legal Reserve company writing  
Group Insurance.

"REMEMBER THE UNITED FOR LIFE"

## Rolla Clymer correspondence

### Net Gain Report for Kansas Owned Life Insurance Companies

- 1 9 3 8 -

Rank	Name and Location	Began Business	Total Insurance in Force	1938 Gain
1.	UNITED LIFE, Salina	1927	9,738,978	643,688
2.	American Home, Topeka	1909	9,321,944	214,703
3.	Farmers & Bankers, Wichita	1911	53,514,769	147,047
4.	Pioneer National, Topeka	1928	3,063,575	49,500
5.	Manhattan Mutual, Manhattan	1918	5,155,550	32,167
6.	Great American, Hutchinson	1917	9,749,701	-26,777
7.	Liberty Life, Topeka	1919	17,380,608	-137,731
8.	Victory Life, Topeka	1920	36,727,061	-355,475
9.	Pyramid Life, Topeka	1914	14,898,421	-439,861
10.	Kansas Life, Topeka	1926	4,139,023	-511,474
11.	Central Life, Fort Scott	1907	7,838,817	-599,081
12.	National Reserve, Topeka	1921	14,409,806	-665,526

All figures taken from the 1939 edition of the "Spectator Life Index", foremost authority in the United States on statistical information pertaining to life insurance.

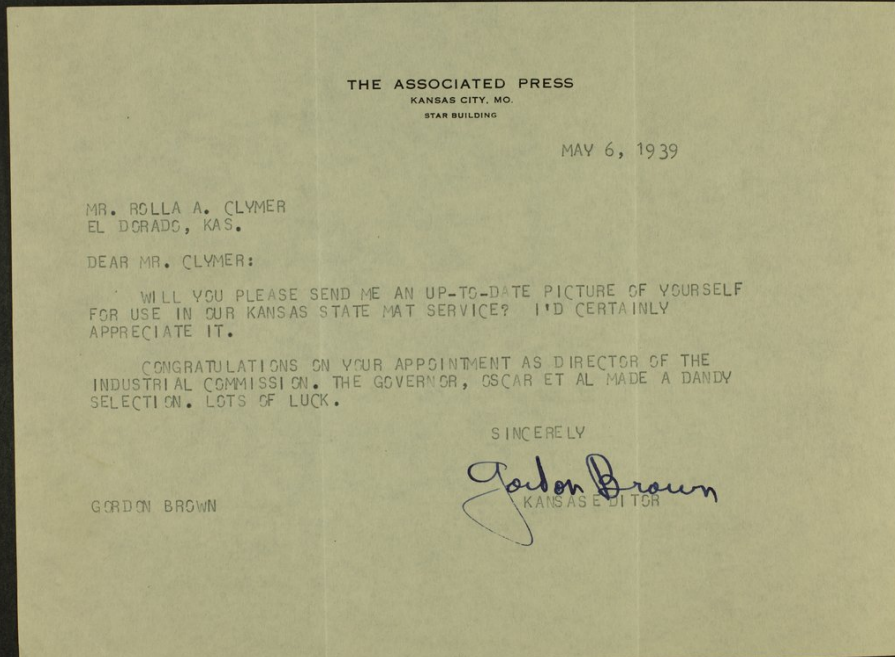
- o -

A study of the above figures shows the substantial gain made by The United Life Insurance Company. In 1938 United Life had approximately 145% more net gain than the combined net gains of all other Kansas companies.

Such a record of performance explains why United Life deserves its reputation of being THE MOST PROGRESSIVE KANSAS COMPANY in the field of Old Line Legal Reserve life insurance.



## Rolla Clymer correspondence



## Rolla Clymer correspondence

May 8, 1939

Mr. Gordon Brown,  
Kansas Editor The Associated Press,  
Kansas City, Mo.

My Dear Gordon:-

I have no photograph but here are a couple of mats of myself taken from a rather recent picture. Hope these will serve your purpose. I want to thank you for your kind words. I have a large pear-shaped job on my hands and only hope that I can make something of it.

Sincerely, in haste,





## Rolla Clymer correspondence

CLYDE M. REED  
KANSAS

ENROLLED BILLS  
INTERSTATE COMMERCE  
MANUFACTURES  
MINES AND MINING  
POST OFFICES AND POST ROADS

### United States Senate

WASHINGTON, D. C.

May 8, 1939.

Hon. Rolla Clymer,  
El Dorado Times,  
El Dorado, Kansas.

Dear Rolla:

You are thus addressed because, as Cecil Howes would put it, you are now recognized a member of the ancient and honorable order of the "Hons." I can't think of anybody who would do better with the very difficult job you have taken, than you will do.

I am not as hopeful of substantial results as I wish I were. I have observed and studied these things for many years, as well as roaming up and down the United States and I realize that, except in very special circumstances, men engaged in the general manufacturing business locate where they are most accessible to the consuming population. Unfortunately, Kansas is situated on the edge of population. We are perhaps the most highly industrialized of the farm states, through our processing of wheat and livestock, and refining of petroleum, as well as the manufacturing of cement. The latter is largely for distribution within a radius fixed by transportation costs. That is also true of all other cement mills in the country. Our meat and flour moves longer distances - very long distances in fact. Our refined petroleum is again circumscribed in distribution by competition with plants located elsewhere.

Kansas has enough salt to supply the civilized world for an indefinite period, but again that is a case of localized deposits and the transportation costs of distribution.

I have gone over these things so many times and have discussed on many occasions the opportunities for Kansas to expand its industrial activities, that I wish I were more hopeful, but I want you to know you will have the support of my newspaper as well as myself and my very best wishes.

As I said in the beginning, I can't think of anybody who will do a better job in a difficult task.

With my best wishes, I am

Cordially yours,

Clyde M. Reed

CMR:S





### THE OTTAWA CHAMBER OF COMMERCE

(INCORPORATED)

#### OFFICERS

J. L. WASSMER, PRESIDENT  
S. F. HARRIS, VICE-PRESIDENT  
C. W. HEGBERG, TREASURER  
JOHN R. THOMPSON, SECRETARY  
MISS MARJORIE CARR, ASSISTANT SECRETARY

#### BOARD OF DIRECTORS

R. M. CLOGSTON, PRESIDENT FIRST NATIONAL BANK  
J. E. COLBY, VICE-PRESIDENT PEOPLES FURNITURE CO.  
T. J. CUMMINGS, JR., POSTMASTER  
S. F. HARRIS, EDITOR OTTAWA HERALD  
C. W. HEGBERG, PRESIDENT STATE BANK OF OTTAWA  
S. W. HUMPHREYS, SEC'Y, HOME SAVINGS & LOAN ASS'N

B. W. KELSEY, HARRIS & KELSEY, LAWYERS  
F. R. McVEY, McVEY MORTUARY  
H. E. NEWFIELD, JEWELER

C. M. OTT, SEC'Y-TREAS., OTTAWA WHOLESALE GROCERY CO.  
F. H. PARKS, OTTAWA MILLWORK CO.  
STEPHEN RALPH, BENNETT CREAMERY CO.  
E. E. STONE, STONE CHEVROLET CO. OWNER  
J. L. WASSMER, DAVIS-WASSMER CLOTHING CO.  
G. D. WEILEPP, MGR. BUSINESS MEN'S CREDIT BUREAU

OTTAWA, KANSAS

May 8, 1939

Mr. Rolla W. Clymer  
El Dorado  
Kansas

Dear Mr. Clymer:

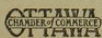
Once each month The Ottawa Chamber of Commerce holds what has popularly been called a "Town Hall Meeting."

This has been up to now an open forum wherein local business men have held discussions of problems troubling them. Because of local interest in the development of Kansas as an Industrial State, it has been suggested by several that we invite you as the newly appointed Director of Kansas Industrial Development Commission, to address our next "Town Hall Meeting" on June 6, to explain at that time the purpose of the Industrial Commission, and what you hope to accomplish as its Director.

I feel sure that you will have a very sympathetic audience to your remarks. We are not a wealthy Chamber of Commerce but I can assure you of traveling and hotel expenses, if you find yourself able to comply with our request.

Very sincerely yours,

*John R. Thompson*  
John R. Thompson  
Secretary

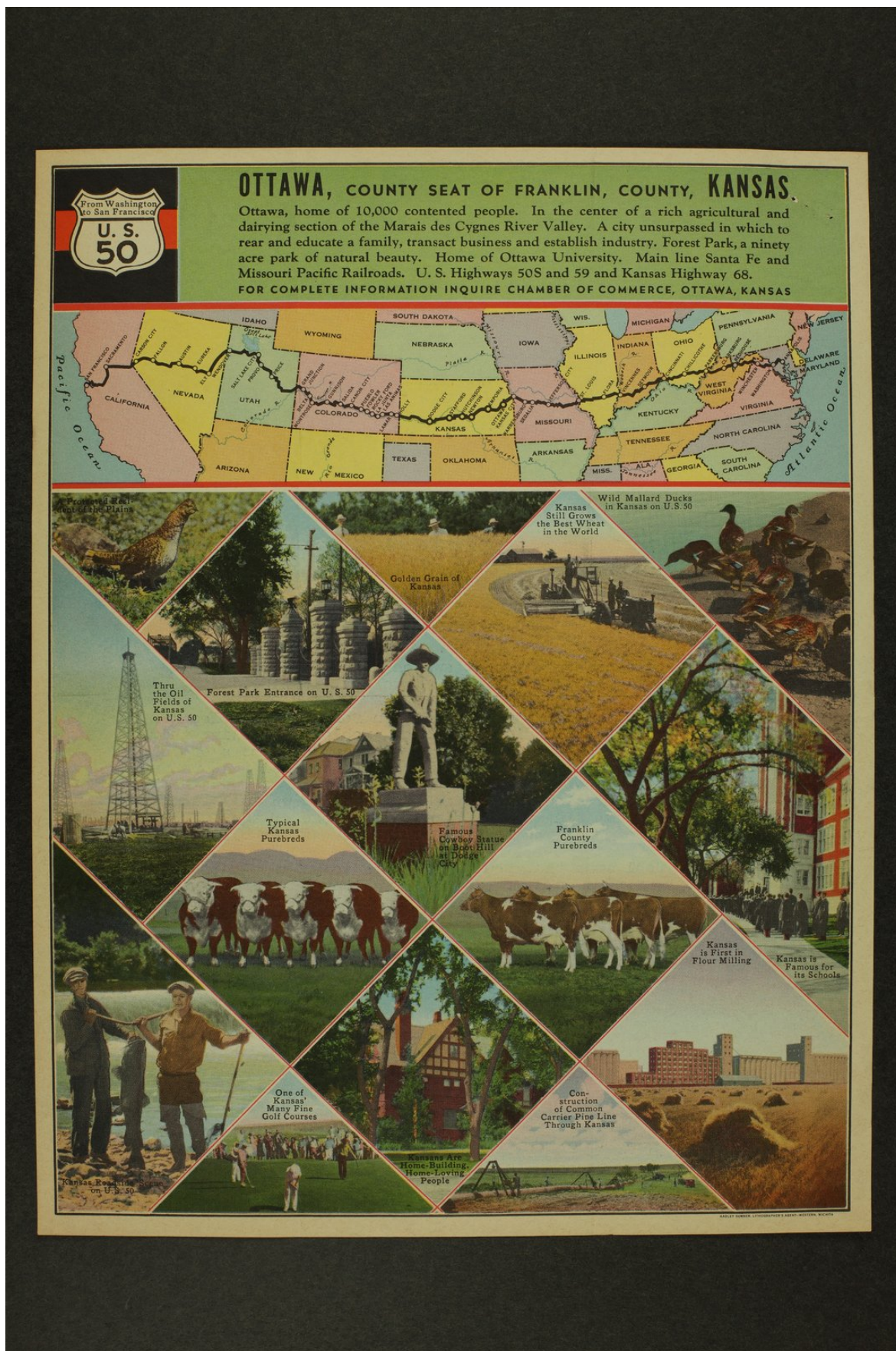


MEMBER  
CHAMBER OF COMMERCE OF THE UNITED STATES  
KANSAS CHAMBER OF COMMERCE  
BETTER BUSINESS BUREAU

What Helps  
Business  
Helps You!



## Rolla Clymer correspondence





## Rolla Clymer correspondence

LAW OFFICES  
**TINCHER, RALEIGH & CUSHENBERY**  
301-302 FIRST NATIONAL BUILDING  
PHONE 62  
HUTCHINSON, KANSAS

J. N. TINCHER  
CLYDE RALEIGH  
LEAFORD F. CUSHENBERY

OFFICES AT  
HUTCHINSON, KANSAS  
MEDICINE LODGE, KANSAS

May Eighth,  
1 9 3 9

Honorable Payne Ratner,  
Governor, State of Kansas,  
Topeka, Kansas.

Honorable Rolla Clymer,  
Industrial Director,  
Eldorado, Kansas.

Gentlemen:

At this time and so as to be in time, I am notifying you two gentlemen that on the first Saturday next July there will be a meeting of the Kansas Society of Colorado. This meeting will be held at the Manitou Springs pavilion.

There will be two speeches and I expect them to be made by you two gentlemen, the best Kansas has to offer.

We usually have a crowd that attends this Society of from 1000 to 1500, and it is my ambition this year to make it the greatest meeting we have ever had. There is never a time but what there are three or four thousand Kansans in that part of Colorado at that time, and there has never been a time but what practically all of them would have attended this meeting except it was poorly advertised. They are generally satisfied just to run a little notice in the Colorado Springs daily paper.

It is my ambition this year to advertise the meeting in the little papers that the tourists read. A good many of them are not careful to read the daily paper fully and all of them read some little paper published in their immediate neighborhood.

Generally some important official from the State of Colorado is there to welcome us. For instance, I have heard Senator Johnson on the program, and that





## Rolla Clymer correspondence

Honorable Payne Ratner,  
Honorable Rolla Clymer,  
5-8-39 -- 2

part of the program is arranged by the Mayor of Colorado Springs or Manitou, and they both assured me this year they would get the Governor of Colorado to come down if I can get a comparable program from Kansas.

The Governor of Kansas was extensively advertised as the speaker last year and there were some two thousand people attending the meeting. Unfortunately he was busy in politics and did not come and I was asked to substitute for him. He is still arguing that he did not benefit any politically by my substitution. However, we are parting good friends as he is accepting one of the last permanent plums of the New Deal, which feathers his nest for his life time in very, very nice shape. In other words, I think he has a feeling now that those of us who opposed him in the election turned out to be his benefactors.

This portion of Colorado where we celebrate really belongs to Kansas. It is located in Colorado so far as state lines are concerned, but is supported almost entirely by Kansas people, outside of a few rocks they take out of the ground. Their best crop, however, is us tourists.

I anticipate an acceptance on the part of both of you gentlemen for the reason that the last Saturday in July there is really no other place near us to go except the mountains. If you do any work on that hot a day you will not do good work. If you take a rest about that time, you might be able to accomplish something during the decent weather.

I will arrange about your entertainment after receiving your acceptance and an indication from you as to how long you desire to remain in Colorado at that time, and as to how many will be in your party. I do not think either of you would be fit to make a speech unless you are accompanied by your families.

Yours very truly,

President of the Kansas Society  
of Colorado, My only office.

JNT:EM