

Angell disc plow advertising pamphlet

This is a pamphlet for the Angell disc plow, invented by C. J. Angell (Charles John/Charlie John), a wheat farmer from Plains, Kansas. It was manufactured by the Ohio Cultivator Company in Bellevue, Ohio. It contains testimonials from the following men from Plains, Kansas: J. D. Golliher, D. B. Baty, Clyde Atkinson, and W. W. Coons

Creator: Ohio Cultivator Company

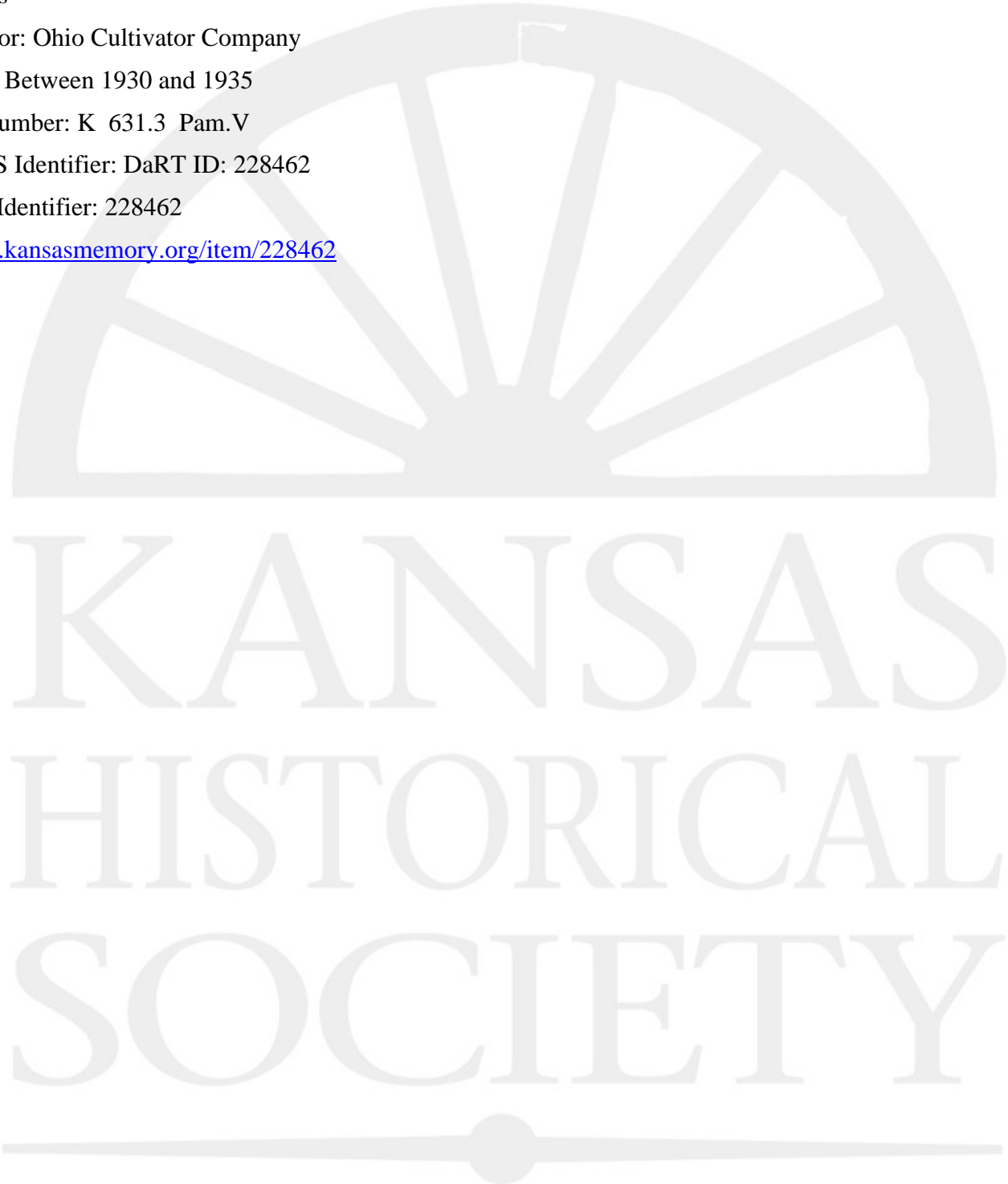
Date: Between 1930 and 1935

Callnumber: K 631.3 Pam.V

KSHS Identifier: DaRT ID: 228462

Item Identifier: 228462

www.kansasmemory.org/item/228462



Angell disc plow advertising pamphlet

WHAT WHEAT FARMERS SAY ABOUT ANGELL PLOW

"Have plowed 2525 acres of wheat/land with the Angell Plow and would not farm wheat without one of these plows. Last year I pulled this plow with a 15 H.P. tractor, cutting a swath ten feet wide, averaging five hundred acres per week, running day and night. This plow will kill all foreign growth running at a depth of two inches or more, leaving enough stubble above the ground to serve as a mulch and preserving the moisture. The Plow will leave the subsoil smooth."

J. D. GOLLIHER, Plains, Kansas.

"I do not believe too much can be said in behalf of the one-way Angell Disc Plow, as it has given almost universal satisfaction to those who have operated it. Last year some of our largest yields of wheat were off land prepared with this one-way disc. It would indeed be hard to sell any other kind of implement to prepare wheat land where this one-way disc has been tested and it being possible to secure them."

D. B. BATY, Plains, Kansas.

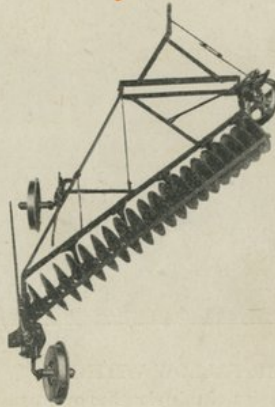
"I have used an Angell Plow ever since it was possible to secure one. The Angell Plow is beyond question the greatest machine for wheat farming ever invented. We cannot farm in Meade County without this Plow. My machine has plowed better than two thousand acres and is now in fine mechanical condition."

CLYDE ATKINSON, Plains, Kansas.

"I have used the Angell one-way Disc Plow in preparing ground for wheat on 1800 acres, testing the plow from every angle and have found it to be the only machine that I would use under any consideration. You will find that this Plow moves all the dirt under its ten foot space. Does not ridge or make furrows under the top soil, saves moisture, kills all foreign growth, leaving enough of the stubble above the ground to serve as a mulch and prevent the land from blowing. This plow may be set to work at any depth up to six or seven inches. Pulls lighter than a ten foot tandem disc, doing better work. Any tractor of 15 H.P. or more will handle this plow easily. With possible changing of discs the life of the plow seems to be everlasting."

W. W. COONS, Plains, Kansas.

ANGELL One Way Disc Plow



Top View

Sizes

Made in the following sizes of discs:
12 inch 16 inch 20 inch
Made in the following widths of swath or
cut: 8 feet 10 feet

Distributed By

THE RHODES IMPLEMENT CO.
Kansas City, Mo.

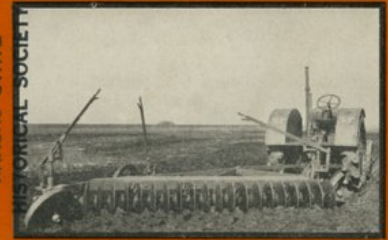
T. G. NORTHWALL CO.
Omaha, Nebraska

MAR 8 1 1965

Morgan Williams

ANGELL Disc Plow

Invented by C. J. Angell, a wheat
farmer of Plains, Kansas



now manufactured by

FAMOUS
Ohio

The Ohio Cultivator Co.
Bellevue, Ohio

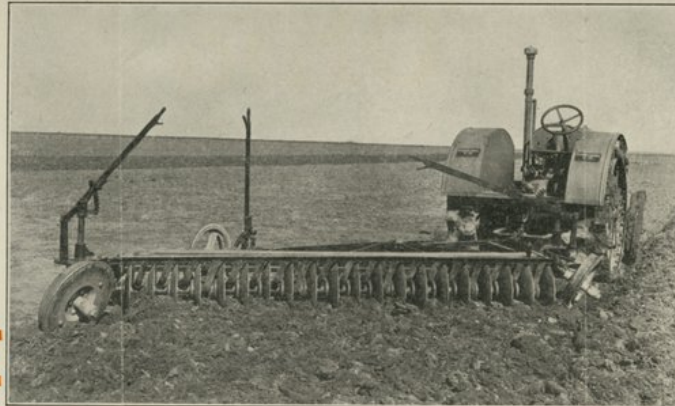
Angell disc plow advertising pamphlet

ANGELL

One Way

Disc Plow

A Kansas wheat farmer invented this wonderful plow and made hundreds of them for his neighbors.



FAMOUS Ohio

The Ohio Cultivator Co.
Bellevue, Ohio

After considerable investigation Mr. Angell selected our Company to make this plow and sold us his patents, tools and exclusive rights.

WHAT IT IS

A new type of Disc Plow built with the discs on one axle and moving the dirt one way.

It was invented and perfected by Mr. C. J. Angell on his wheat farm near Plains, Kansas.

WHAT IT DOES

Plows a swath of from 6 feet to 10 feet wide and from 2" to 6" deep.

On account of its light draft it is possible to pull the 10 ft. plow at a depth of 4" in ordinary soil with a tractor of 15-30 H.P.

SUMMER FALLOW WITH IT

The design of this plow has overcome side-draft and friction to such an extent that it is possible to pull 20 discs, cutting a swath of 10 feet with a tractor of 15-30 H.P.

The Angell Plow will not leave air pockets in the seed bed nor ridge the subsoil.

It will work in harder soil and at a greater depth than a tandem disc harrow and will not, if properly adjusted, leave ridges or dead furrows in the field.

It is possible with the Angell Plow to kill volunteer wheat and weeds while running at a depth of 2" or 3", leaving a perfect seed bed for immediate sowing of the grain.

INCREASE YOUR YIELD

By an entirely new principle of design, Mr. Angell has built a disc plow that thoroughly pulverizes and turns the soil for a depth of from 3" to 6", killing all weeds and volunteer wheat, but still leaving enough of the stubble on the top of the ground to serve as a mulch to hold the moisture and prevent the soil from blowing.

Mr. Angell has for the past three years prepared his seed bed for wheat with this plow, raising wheat with an average yield of 35 bushels per acre in 1924 and in 1925 his average yield was three times as great as the average for Meade County.