

South Plains & Santa Fe Railway Company rail line

These four photographs show views of the South Plains & Santa Fe Railway Company line. The rail line, a subsidiary of the Atchison, Topeka & Santa Fe Rail Company, ran from Lubbock, Texas to Bledsoe, Texas. The first photograph shows a view of tracks near mile post #18. In the second photograph a view of a typical pile trestle bridge is visible. The third photograph shows a view of tracks near bridge 10-A. The last photograph shows an open deck pile trestle bridge with rails.

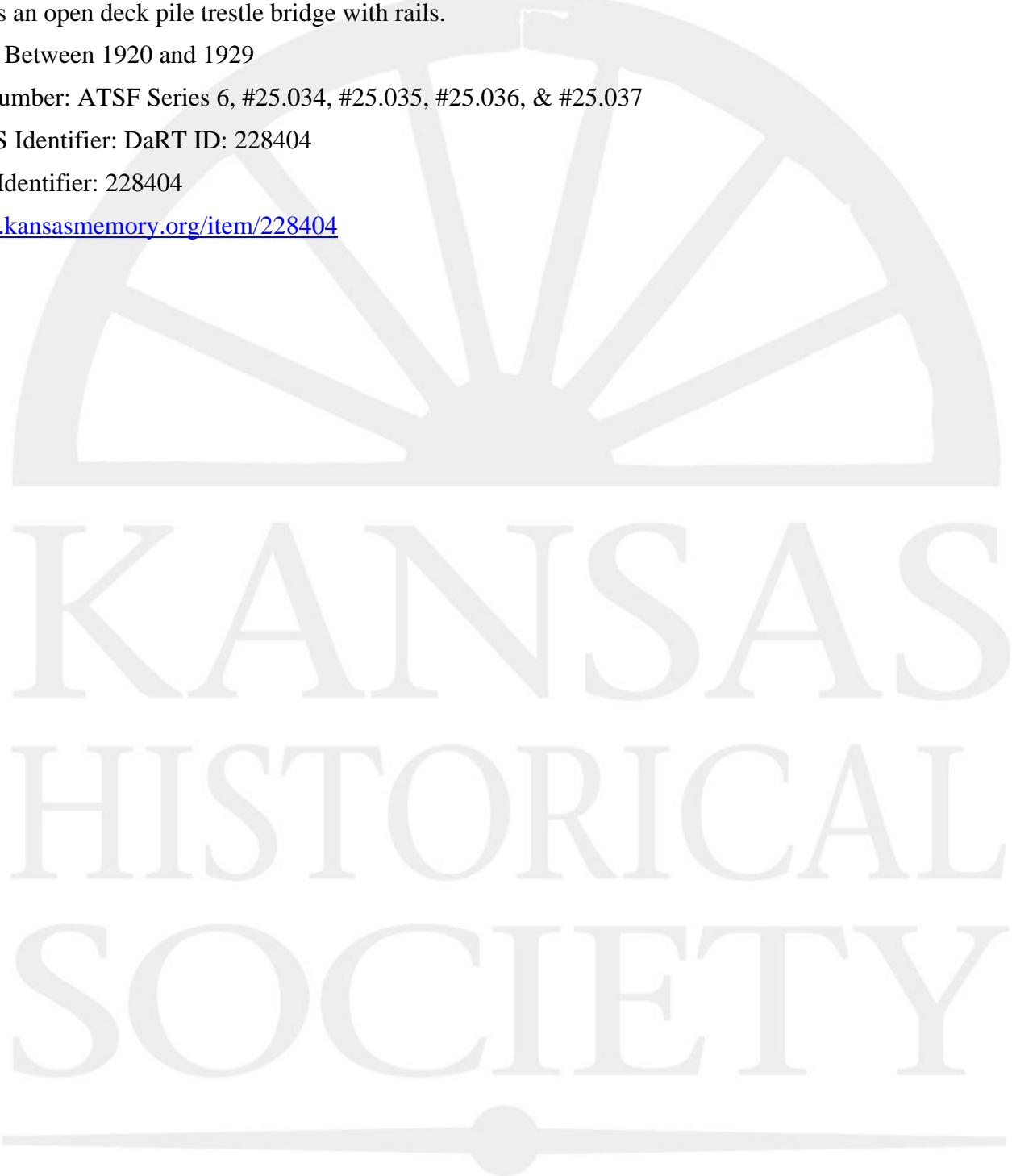
Date: Between 1920 and 1929

Callnumber: ATSF Series 6, #25.034, #25.035, #25.036, & #25.037

KSHS Identifier: DaRT ID: 228404

Item Identifier: 228404

www.kansasmemory.org/item/228404



South Plains & Santa Fe Railway Company rail line



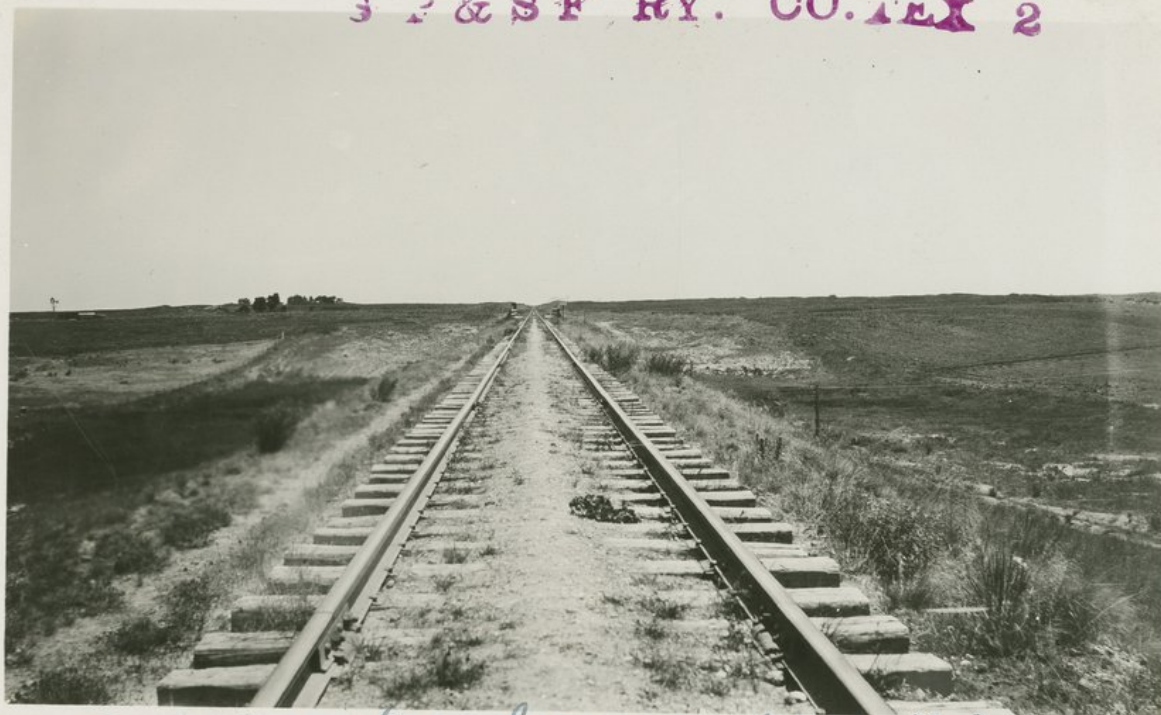
Typical view of undeveloped land. Scene near mile post 18

South Plains & Santa Fe Railway Company rail line



Typical pile trestle - Griggs 34-A

South Plains & Santa Fe Railway Company rail line



One of larger fills. Same. near bridge 40-A

South Plains & Santa Fe Railway Company rail line



Br 40-A, 140' open deck pile trestle with walkway and handrails