

## **Atchison, Topeka & Santa Fe Railway Company's steam locomotive #1318**

This photograph shows the Atchison, Topeka & Santa Fe Railway Company's steam locomotive #1318, 4-6-2, at an unidentified location. The locomotive was used for passenger and light freight service.

Creator: Atchison, Topeka, and Santa Fe Railway Company

Date: Between 1940 and 1949

Callnumber: ATSF Series 6, #7.61

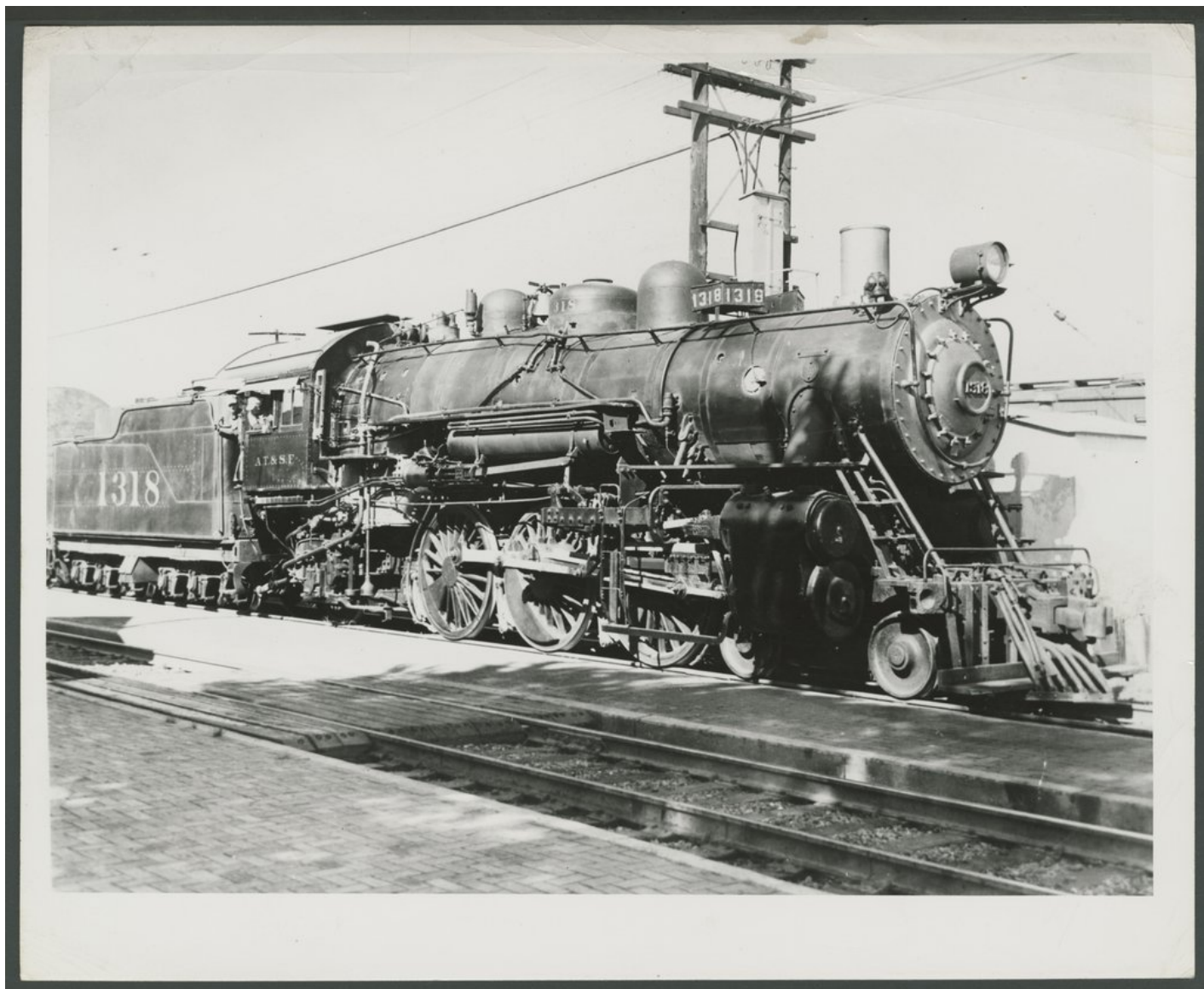
KSHS Identifier: DaRT ID: 227734

Item Identifier: 227734

[www.kansasmemory.org/item/227734](http://www.kansasmemory.org/item/227734)



## Atchison, Topeka & Santa Fe Railway Company's steam locomotive #1318



## Atchison, Topeka & Santa Fe Railway Company's steam locomotive #1318

LA-1745



(Santa Fe Railway Photo)

LA 1745 Engine 1318. 4-6-2 type. Class 1309.  
Diameter driving wheels 73". Cylinders 23½"x28".  
Steam pressure 220 lbs.sq.in. Tractive force 39,650 lbs.  
Built 1911. Originally 4-cylinder balanced compound.  
Rebuilt 1923.  
Used in passenger and light freight service.

6/7.61