

Electrical substation in Abilene, Kansas

Here are three photographs of a DS&O Electric Cooperative substation in Abilene, Kansas. DS&O Electric Cooperative is an electric utility located in Solomon, Kansas. It was established during the Great Depression as part of the federal recovery effort to bring the advantages and economic stimulus of electric power to rural Kansas. In 1991, Smoky Valley Electric Cooperative in Lindsborg, Kansas, merged with DS&O, adding to the Cooperative's coverage area and member base. It was named DS&O because members were from Dickinson, Saline, and Ottawa counties.

Date: 1937

Callnumber: 2012-249

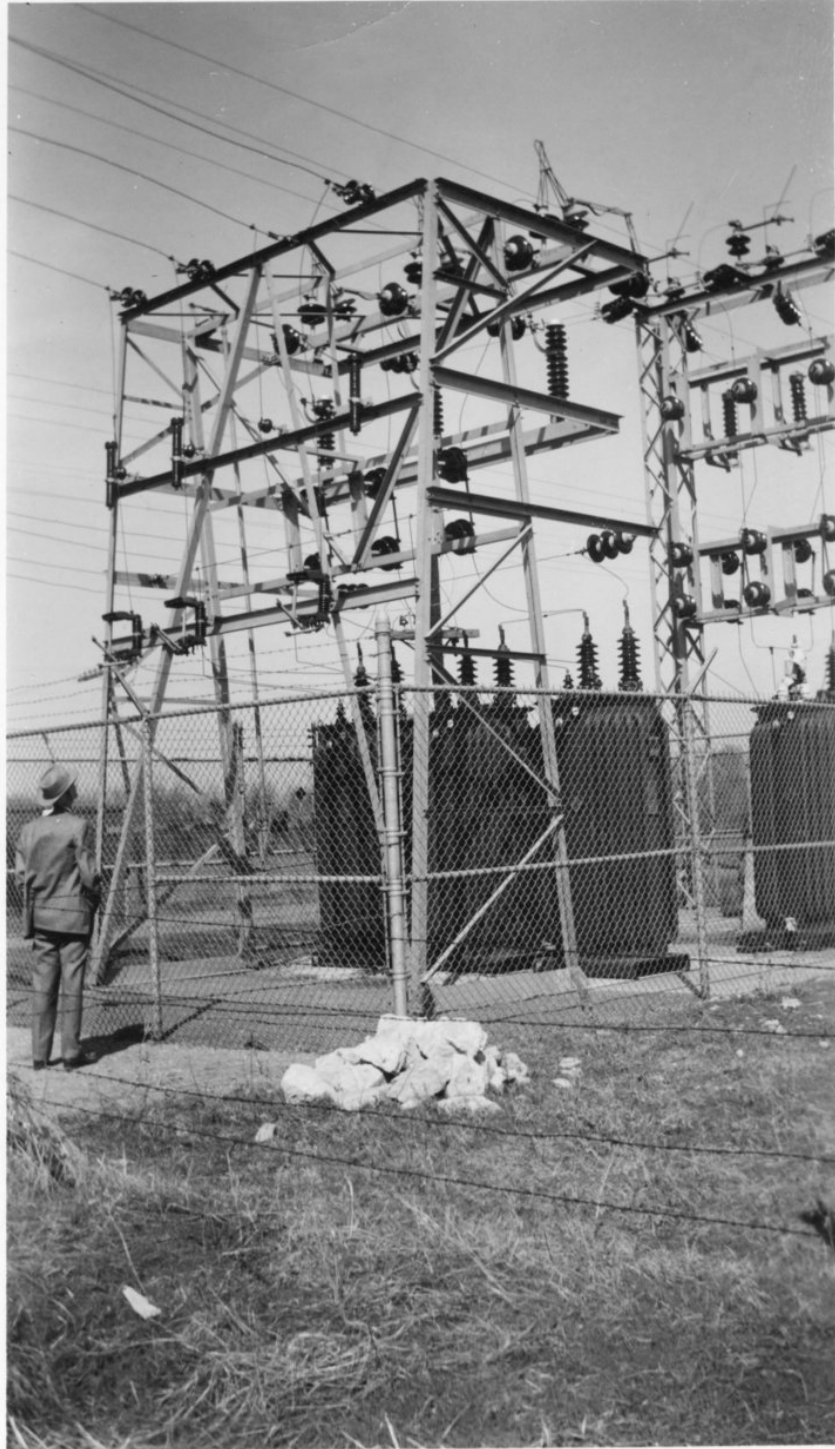
KSHS Identifier: DaRT ID: 226952

Item Identifier: 226952

www.kansasmemory.org/item/226952

KANSAS
HISTORICAL
SOCIETY

Electrical substation in Abilene, Kansas





Electrical substation in Abilene, Kansas

