

Biennial report of the Boys Industrial School, 1930

Section 2, Pages 31 - 45

This is the twenty-fifth biennial report of the Boys' Industrial School in Topeka, Kansas. W. A. Smith was the superintendent. The Kansas State Reform School, also known as the Industrial School for Boys, was established in 1879 by a legislative act that appropriated \$35,000 for the erection of buildings, etc., in Topeka, Kansas. Control and supervision of the school was placed in the hands of the Board of Trustees of Charitable Institutions. The school was located 3 miles north of the capitol building on an original tract of 170 acres that was given by the city of Topeka. The west wing of the main building was opened on June 1, 1881. The school taught boys the rudiments of useful employment as a means of supporting themselves after being discharged from the facility. The boys learned, among other things, tailoring, shoe and harness making, woodworking of various kinds, baking, and printing. Information included in this item are reports from the superintendent, medical agent, and parole agent. Also listed are general statistics on the school.

Creator: Kansas. State Board of Administration

Date: 1930

Callnumber: S.P. 364 K13t 1930

KSHS Identifier: DaRT ID: 226235

Item Identifier: 226235

www.kansasmemory.org/item/226235

KANSAS
HISTORICAL
SOCIETY

Biennial report of the Boys Industrial School, 1930

30

Boys' Industrial School.

TABLE No. 5. Private money of patients or inmates, fiscal years ending June 30, 1929, and June 30, 1930.

On hand July 1, 1929.....	\$297.79
Received during biennial period.....	3,093.57
Withdrawn during biennial period.....	\$3,284.27
On hand July 1, 1930.....	107.09
Totals	\$3,391.36	\$3,391.36

TABLE No. 6. Purchase and issue of stores for the biennial period ending June 30, 1930, including ordinary and extraordinary repairs and improvements, maintenance and repairs and fees.

	1929.	1930.
Stores on hand and paid for at beginning of year:		
Commissaries	\$1,152.29	\$2,069.82
Property	11,344.97	9,279.72
Purchased and paid for during year:		
Commissaries	22,157.11	27,878.03
Property, not including repairs.....	81,259.81	60,938.76
Stock in commissary not heretofore listed.....	1,735.45
Total to be accounted for.....	\$115,914.18	\$101,901.78
Issued during the year:		
Commissaries	\$23,344.46	\$25,450.45
Property, not including repairs.....	81,220.18	60,127.95
Remaining on hand and paid for at close of year:		
Commissaries	2,069.82	3,366.45
Property	9,279.72	12,956.93
Total accounted for.....	\$115,914.18	\$101,901.78

Biennial report of the Boys Industrial School, 1930

TABLE No. 7. Classified report of purchases and issue from maintenance and repairs and fees, showing per capita cost, based on the number of inmates—302 first year, and 213 second year.

CLASSIFICATION—FIRST YEAR.	Balance.	Purchased.	Per capita.	Issued.	Per capita.	Balance.
Commissaries.....		\$24,118.99				
Books, stationery, subscriptions, office supplies, etc.....		837.59				
Clothing, bedding, dry goods, etc.....		7,723.11				
Postage, telegraph, telephone, freight, express, etc.....		4,323.39				
Farm, garden, grounds, nursery, seeds, tools, etc.....		21,657.11				
Furniture, carpets, window hangings, etc.....		28.80				
Fuel and light.....		16,103.71				
Household, laundry and kitchen supplies.....		3,145.69				
Hospital and medical supplies.....		1,715.62				
Miscellaneous and amusements.....		3,611.63				
Ordinary repairs.....		9,046.20				
Capital outlay.....	\$13,518.41	4,159.54	\$319.55	\$98,673.06	\$326.72	\$11,349.54
Totals for the first year.....		\$96,594.19				
Balance on hand June 30, 1929.....		13,518.41				
Balance on hand July 1, 1929.....				\$11,349.54		
Total balances.....		\$110,022.60		\$110,022.60		
CLASSIFICATION—SECOND YEAR.						
Commissaries.....		\$27,955.01				
Books, stationery, subscriptions, office supplies, etc.....		793.40				
Clothing, bedding, dry goods, etc.....		10,350.81				
Postage, telegraph, telephone, freight, express, etc.....		2,995.09				
Farm, garden, grounds, nursery, seeds, tools, etc.....		19,252.13				
Furniture, carpets, window hangings, etc.....		238.50				
Fuel and light.....		16,830.58				
Household, laundry and kitchen supplies.....		3,763.83				
Hospital and medical supplies.....		1,527.38				
Miscellaneous and amusements.....		4,807.19				
Ordinary repairs.....		7,551.42				
Capital outlay.....	\$11,349.54	3,733.96	\$468.40	\$96,530.91	\$453.19	\$14,587.93
Totals for the second year.....		\$99,799.30				
Balance on hand June 30, 1929.....		11,349.54				
Balance on hand July 1, 1930.....				\$14,587.93		
Total balances.....		\$111,118.84		\$111,118.84		

Twenty-fifth Biennial Report.

Biennial report of the Boys Industrial School, 1930

32

Boys' Industrial School.

TABLE No. 8. Total cost per capita, years ending June 30, 1929, and June 30, 1930.

	1929. 302	1930. 213
Average number of patients or inmates.....		
Based on appropriations used:		
Salaries and wages, including fees.....	\$56,419.66	\$58,569.77
Maintenance and ordinary repairs, including fees.....	96,504.19	99,769.30
Extraordinary repairs and improvements, including fees....	888.85	2,810.45
Totals	\$153,812.70	\$161,149.52
Per capita based on expenditures.....	509.31	756.57
Based on issues:		
Salaries and wages, including fees.....	\$56,419.66	\$58,569.77
Maintenance and ordinary repairs, including fees.....	99,561.91	99,341.36
Totals	\$155,981.57	\$157,911.13
Per capita cost based on issues.....	516.49	741.36
Total ordinary support based on issues; including issues of sup- plies paid for out of fees.....	\$155,981.57	\$157,911.13
Extraordinary repairs and improvements.....	9,470.43	4,526.28
Value of work from state printer.....	207.56	235.66
Use of buildings and grounds (2 per cent).....	7,765.00	7,765.00
Totals	\$173,424.56	\$170,438.07
Per capita cost.....	574.25	800.17
Total support	\$173,424.56	\$170,438.07
Less fees collected and remitted.....	6,970.81	20,471.63
Actual cost of support.....	\$166,453.75	\$149,966.44
Actual cost per capita to taxpayer.....	551.07	704.06

TABLE No. 9. Report of manufactures and repairs in the sewing room, on wards, etc., for biennial period ending June 30, 1930.

Articles.	1929.		1930.	
	Manu- factured.	Repaired.	Manu- factured.	Repaired.
Aprons	191	410	252	323
Bags, laundry	28	2	11
Bags, coffee	36	17	14	9
Baskets
Baskets, waste
Cases, pillow	298	409	218	252
Caps, wool, O. D.....
Caps, white
Cloths, table	100	128	61	217
Coats, wool, O. D.....	211
Curtains	48	21	42	38
Mats, table
Napkins	24	11	72	23
Overalls	5,278	...	1,249
Sandwich trays
Sheets	208	327	269	226
Shirts	1,330	2,228	487	791
Shoes	478	...	753
Suits, white	66	...	22
Towels	621	219	684	507
Ties	322	...	469
Trousers, wool, O. D.....
Table pads

Biennial report of the Boys Industrial School, 1930

Twenty-fifth Biennial Report.

33

TABLE No. 10. Products of farm and garden for biennial period June 30, 1930.

Items.	1929.		1930.	
	Quantity.	Value.	Quantity.	Value.
Milk, gallons	58,039	\$13,929.66	53,405	\$12,283.15
Fruits:				
Grapes, pounds	5,325	132.50	5,404	162.12
Strawberries, crates	189	200.04	57	327.77
Gooseberries, pounds	328	13.12
Vegetables:				
Asparagus, bushels	12	35.70	16	33.24
Beans, string, bushels	101½	180.09	252	352.80
Beets, bushels	1,129½	524.37	547	237.85
Corn, sweet, bushels	1,314	513.19	664	121.00
Cabbage, pounds	40,941	275.69	8,515	100.82
Cauliflower, pounds	495	20.20
Carrots, pounds	10,295	343.15	21,313	270.15
Dill, crates	2½	12.50
Eggplant, pounds	1,824	74.33	1,188	51.50
Cucumbers, pounds	33,150	433.23	4,620	102.30
Lettuce, bushels	67	51.10	35	29.40
Muskmelons	948	58.38	6,980	1,020.20
Melons, honey dew	468	47.25
Onions, bushels	388½	632.07	208½	329.52
Onion sets, bushels	144	216.00	32½	33.00
Pumpkins	1,236	326.50	1,400	225.00
Potatoes, Irish, pounds	310,230	1,941.27	947,706	9,601.12
Potatoes, sweet, bushels	344	335.24	1,019	771.72
Peas, pounds	425	17.00	2,460	74.20
Peppers, mango, bushels	215	210.75	10	5.00
Peppers, hot, bushels	44	68.00
Radish, bushels	73	60.59	18	158.45
Rhubarb, bushels	149½	87.47	59	33.88
Spinach, bushels	66	40.66	206	67.30
Squash	4,515	221.60
Turnips, bushels	612	373.00	11	11.00
Tomatoes, bushels	1,366½	1,100.35	905½	1,908.00
Watermelons	404	67.73	1,237	357.35
Totals		\$22,522.53		\$28,688.04

TABLE No. 11. Live-stock report for biennial period ending June 30, 1930.

	Bulls	Calves	Cows	Heifers	Hogs	Horses	Mules	Pigs	Shoats
On hand July 1, 1929	4	39	57	14	22	18	10	117	90
Increase		43	14	27	18	5	343	296
Purchased					1	5
Matured from calves				27
Matured from heifers			14
Matured from pigs	296
Matured from shoats	6
Totals	6	82	71	41	40	23	10	460	386
Sold	3	23	17	2	9	12	5	100	285
Died			1	1	58	2
Slaughtered	26
Matured to cows	14
Matured to heifers		27
Matured to hogs	296
Total decrease	3	50	18	16	10	12	5	454	313
Remaining on hand June 30, 1930	3	32	54	24	30	11	5	6	73

Biennial report of the Boys Industrial School, 1930

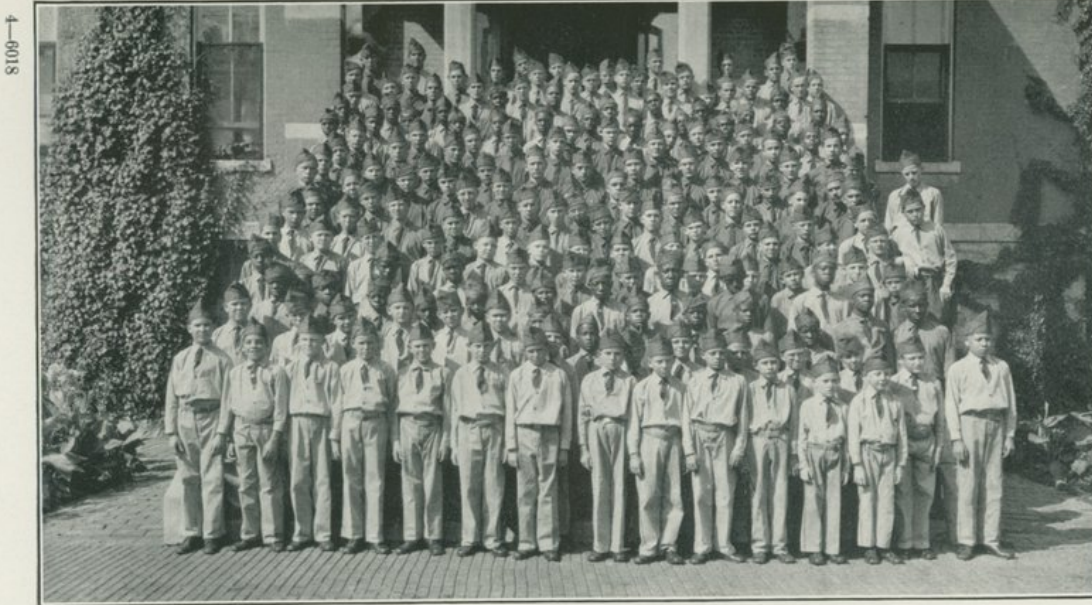
34

Boys' Industrial School.

TABLE No. 12. Farm, garden and poultry yard account, profit or loss, for biennial period ending June 30, 1930.

	1929.	1930.
Received:		
Value of products, farm, garden, dairy and poultry yard...	\$22,522.53	\$28,688.04
Value of live stock and poultry slaughtered.....	1,200.15	570.77
Value of live stock and poultry sold less the value of poultry and live stock purchased.....	4,562.00	8,509.00
Total receipts	\$28,284.68	\$37,767.81
Expended:		
Farm, dairy and garden employees' wages.....	\$5,464.33	\$6,379.69
Employees' board, house, fuel, light, water.....	715.00	798.15
Feed, corn, hay, oats, bran, ensilage, etc.....	10,844.03	9,586.08
Gasoline, kerosene, oil.....	3,132.08	2,030.79
Implements, mowers, harness, and repairs.....	2,467.48	1,291.03
Land rental (pasture and feed land).....	1,016.68	1,145.02
Seeds and bulbs.....	1,119.67	1,792.74
All other supplies, tools, etc., furnished by steward.....	3,337.42	1,162.29
Miscellaneous: Horseshoeing, veterinarian, serums, disinfectants, inspection, coal, etc.....	427.93	244.58
Total expenditures for biennial period.....	\$28,524.62	\$24,430.37
Profit for biennial period.....		\$13,337.44
Loss for biennial period.....	\$239.94	

Biennial report of the Boys Industrial School, 1930



A GROUP PICTURE, BOYS' INDUSTRIAL SCHOOL, TOPEKA.

Biennial report of the Boys Industrial School, 1930



A MILK PRODUCER, BOYS' INDUSTRIAL SCHOOL, TOPEKA.

Biennial report of the Boys Industrial School, 1930



FAIR DISPLAY AT SEAMAN HIGH SCHOOL BY BOYS' INDUSTRIAL SCHOOL.

Biennial report of the Boys Industrial School, 1930



COMPLETING NEW PART OF DAIRY BARN, BOYS' INDUSTRIAL SCHOOL, TOPEKA.

Biennial report of the Boys Industrial School, 1930



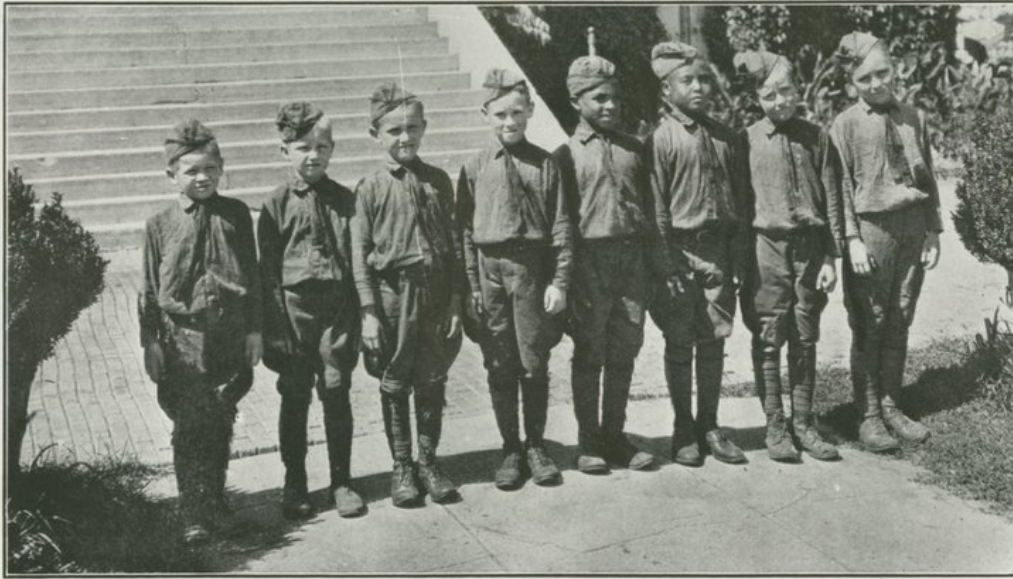
COTTAGE, E AND A COMPANIES, BOYS' INDUSTRIAL SCHOOL.

Biennial report of the Boys Industrial School, 1930



HOSPITAL AND B AND D DORMITORIES, BOYS' INDUSTRIAL SCHOOL, TOPEKA.

Biennial report of the Boys Industrial School, 1930



SOME OF THE SMALLER BOYS.

We have some very young and small boys at the school, and contrary to a general belief by the public they are for the most part here for some trivial offense.

Biennial report of the Boys Industrial School, 1930



SILO FILLING.

Most of our crops that is used for silage has in the last year been raised on what has heretofore been waste land.



SOME OF OUR HOGS.

Over \$6,000 worth of hogs have been sold in the last two years from the Institution herd.

Biennial report of the Boys Industrial School, 1930



ADMINISTRATION BUILDING, BOYS' INDUSTRIAL SCHOOL, TOPEKA.

Biennial report of the Boys Industrial School, 1930

