

## Spanish Bayonet on the Great Plains of Western Kansas

This is a photograph of a Spanish Bayonet or yucca plant on the Great Plains of Western Kansas. The photograph was taken 418 miles west of the Missouri River on the route of the 35th parallel. Alexander Gardner photographed the Union Pacific Railway, Eastern Division, as it was being built across Kansas. Along the route he documented towns, forts, rivers, wildlife, plants, and landscape. This is from a series titled Across the Continent on the Kansas Pacific Railroad.

Creator: Gardner, Alexander, 1821-1882

Date: 1867

Callnumber: Gardner Coll., No. 012

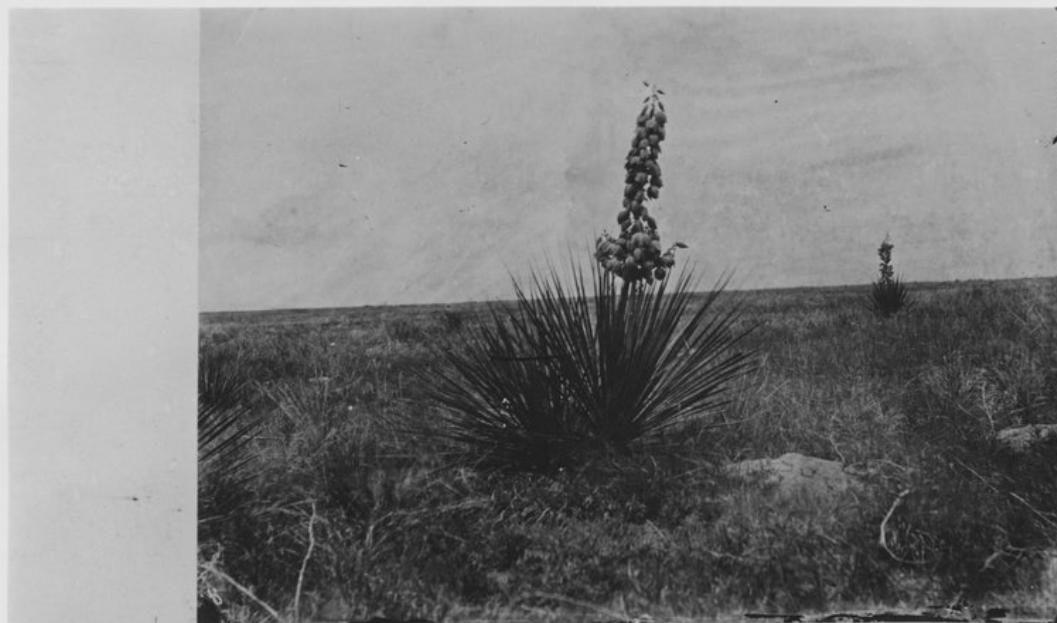
KSHS Identifier: DaRT ID: 224735

Item Identifier: 224735

[www.kansasmemory.org/item/224735](http://www.kansasmemory.org/item/224735)



## Spanish Bayonet on the Great Plains of Western Kansas



ALEX. GARDNER, Photographer.

211 Seventh Street, Washington.

ACROSS THE CONTINENT ON THE KANSAS PACIFIC RAILROAD.

(ROUTE OF THE 35TH PARALLEL.)

"Spanish Bayonet," on the Great Plains in Western Kansas,

418 MILES WEST OF MISSOURI RIVER.

No. 43.