

## **Albin K. Longren with his airplane in Topeka, Kansas**

A photograph showing Albin K. Longren with his first airplane on the Topeka Fair grounds in Topeka, Kansas. This plane was flown for the first time on September 2, 1911, and was the first successful airplane built in Kansas. It was powered with the first eight cylinder motor owned within the state of Kansas. The motor was a type A-2 Hall-Scott, 8 cylinder, water cooled, detachable heads, 60 horsepower, bore 4" and stroke 4".

Creator: Boeger, Topeka

Date: May 16, 1912

Callnumber: TL.500 Lon.A 1 \*13

KSHS Identifier: DaRT ID: 223791

Item Identifier: 223791

[www.kansasmemory.org/item/223791](http://www.kansasmemory.org/item/223791)

KANSAS  
HISTORICAL  
SOCIETY

## Albin K. Longren with his airplane in Topeka, Kansas

### MY FIRST AIRPLANE.

This photograph was taken on the Topeka Fair Grounds September

### MY FIRST AIRPLANE.

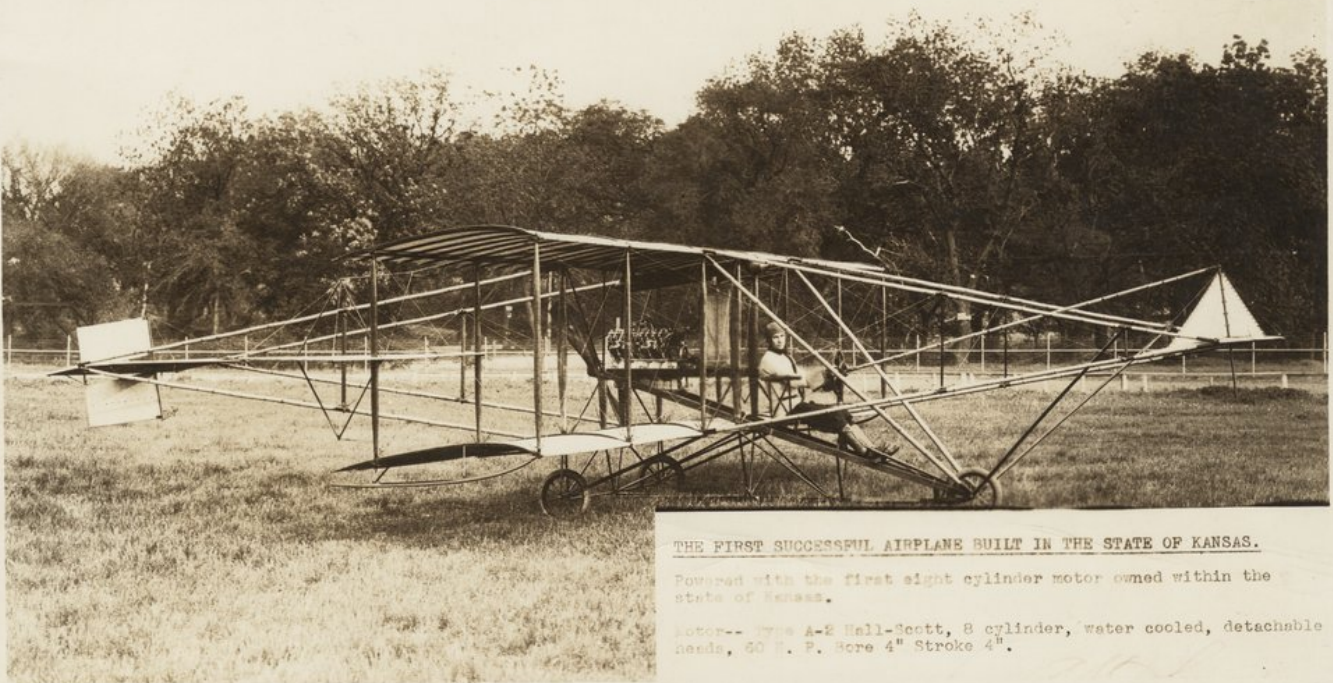
This photograph was taken on the Topeka Fair Grounds.  
May 16th 1912. by Boeger. The first time this plane was  
flown, September the 2nd 1911, I had never sat in any other  
airplane, or received any instructions from any one experienced  
in flying. The plane was also an unknown quantity, because its  
balance and airworthiness, was a big question.

No one, with any airplane building experience, was consulted,  
or rendered assistance. This plane was flown for more than  
three years, without any accidents, in the states of Kansas,  
Colorado, Missouri, Nebraska, Oklahoma and Texas.

During this time, only one rear engine strut was cracked, due  
to landing on rough plowed ground, one forced landing, due  
to failure of rocker arm cylinder number eight, operating  
exhaust valve.

I made 1372 flights during this time, each flight would average  
about twenty five to forty minutes. The plane was cracked up  
by a student in the fall of 1914, student not injured.

*Albin K. Longren*



### THE FIRST SUCCESSFUL AIRPLANE BUILT IN THE STATE OF KANSAS.

Powered with the first eight cylinder motor owned within the  
state of Kansas.

Motor-- Type A-2 Hall-Scott, 8 cylinder, water cooled, detachable  
heads, 60 H. P. Bore 4" Stroke 4".