

## Men [and women] of Kansas

### Section 1, Pages 1 - 30

This volume is a collection of portraits of Kansas business owners, professionals, public officials, and politicians in 1905. Despite its title, this volume does include women also. The women included are physicians, osteopaths, and educators. The professions covered include: educators, clergy, lawyers, bankers, real estate, life insurance, lodge officials, architects, postmasters, physicians, dentists, artists, telephones, utilities, merchants, manufacturers, osteopathy, U.S. marshals, government officials, editors and publishers, railroads, military, and photographers. A name index begins on page 633 and it is also reproduced under Text Version below.

Creator: Topeka Capital

Date: 1905

Callnumber: K BB T62

KSHS Identifier: DaRT ID: 223661

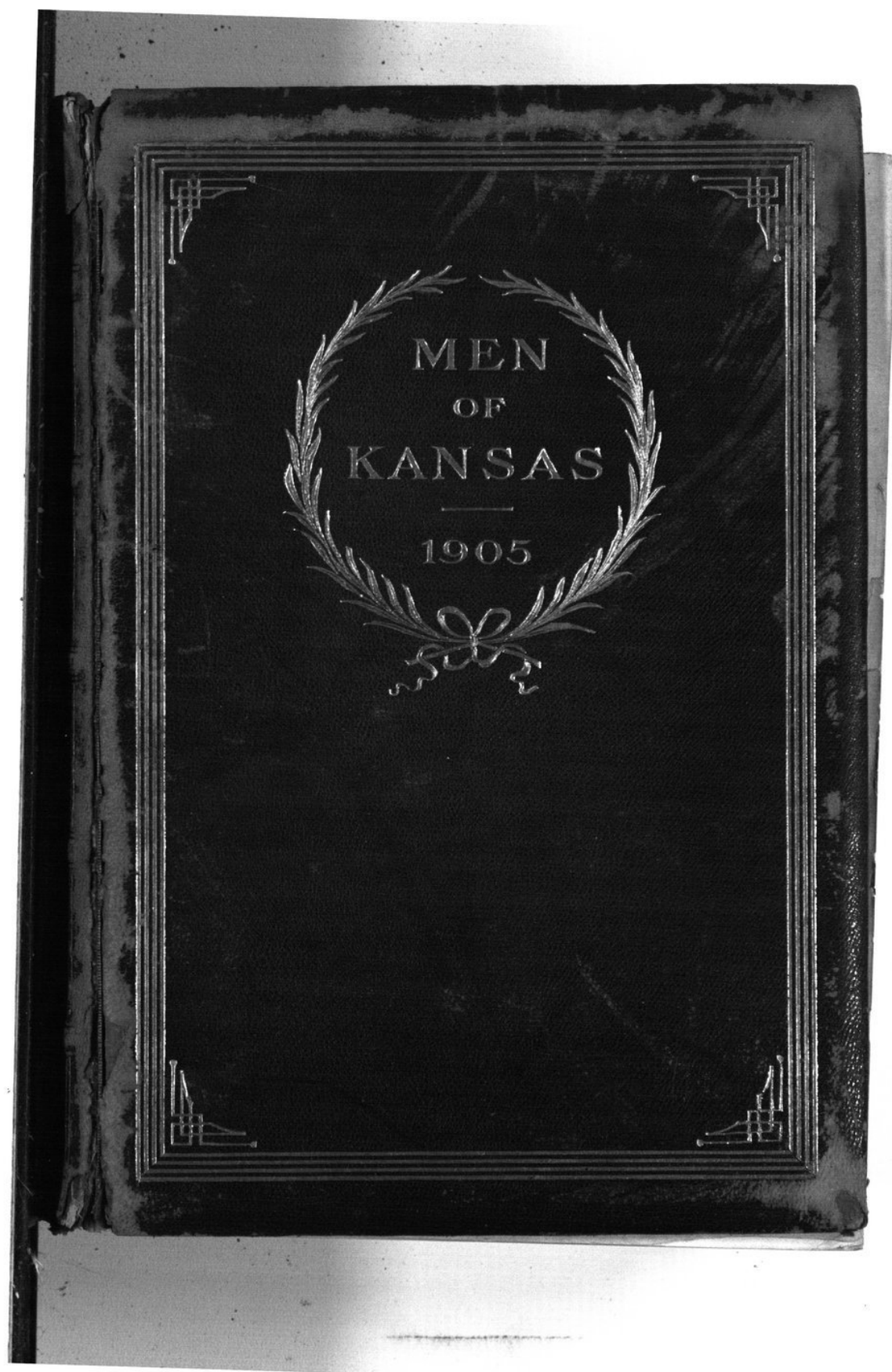
Item Identifier: 223661

[www.kansasmemory.org/item/223661](http://www.kansasmemory.org/item/223661)

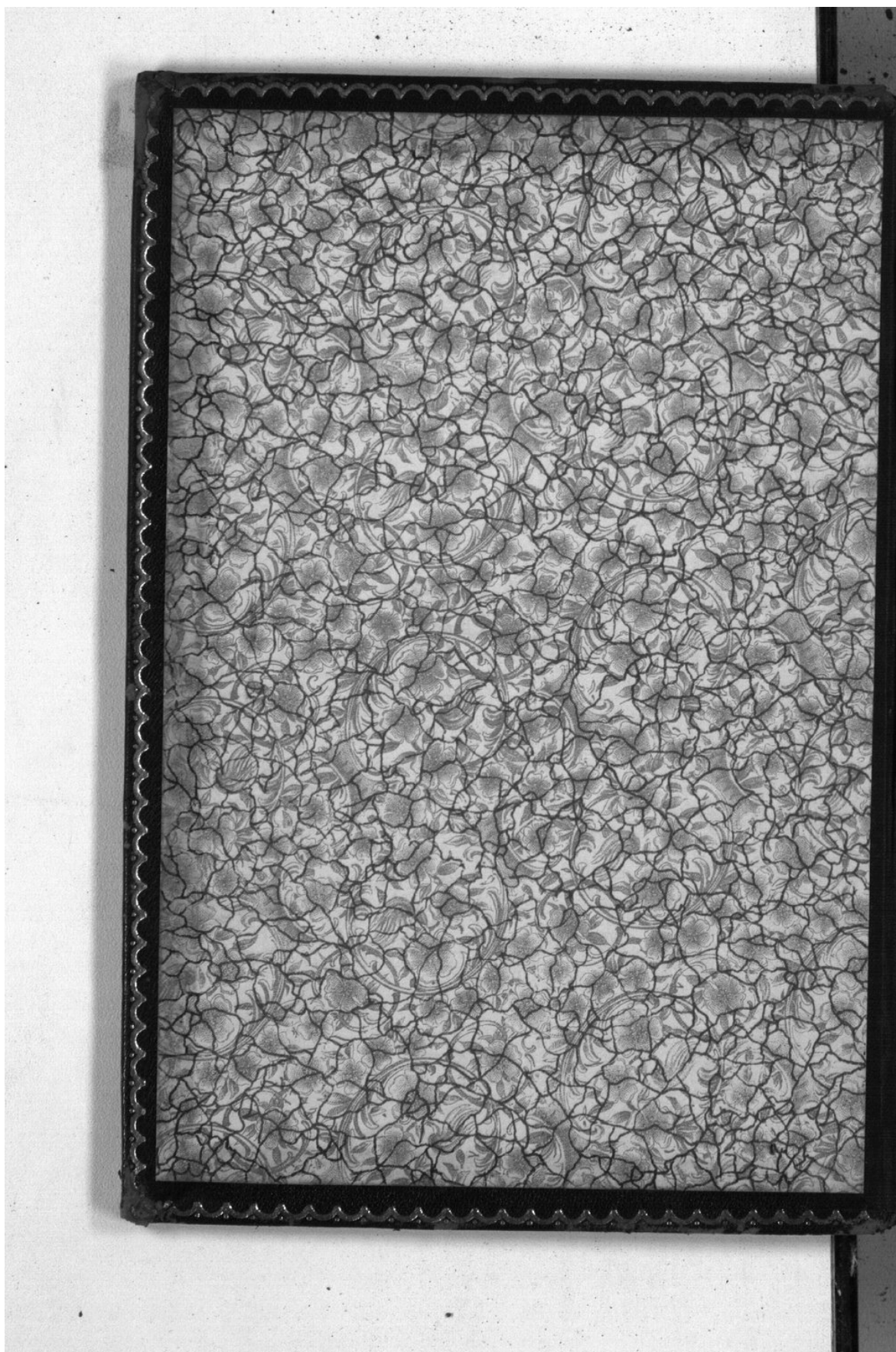
KANSAS  
HISTORICAL  
SOCIETY

# Kansas Memory

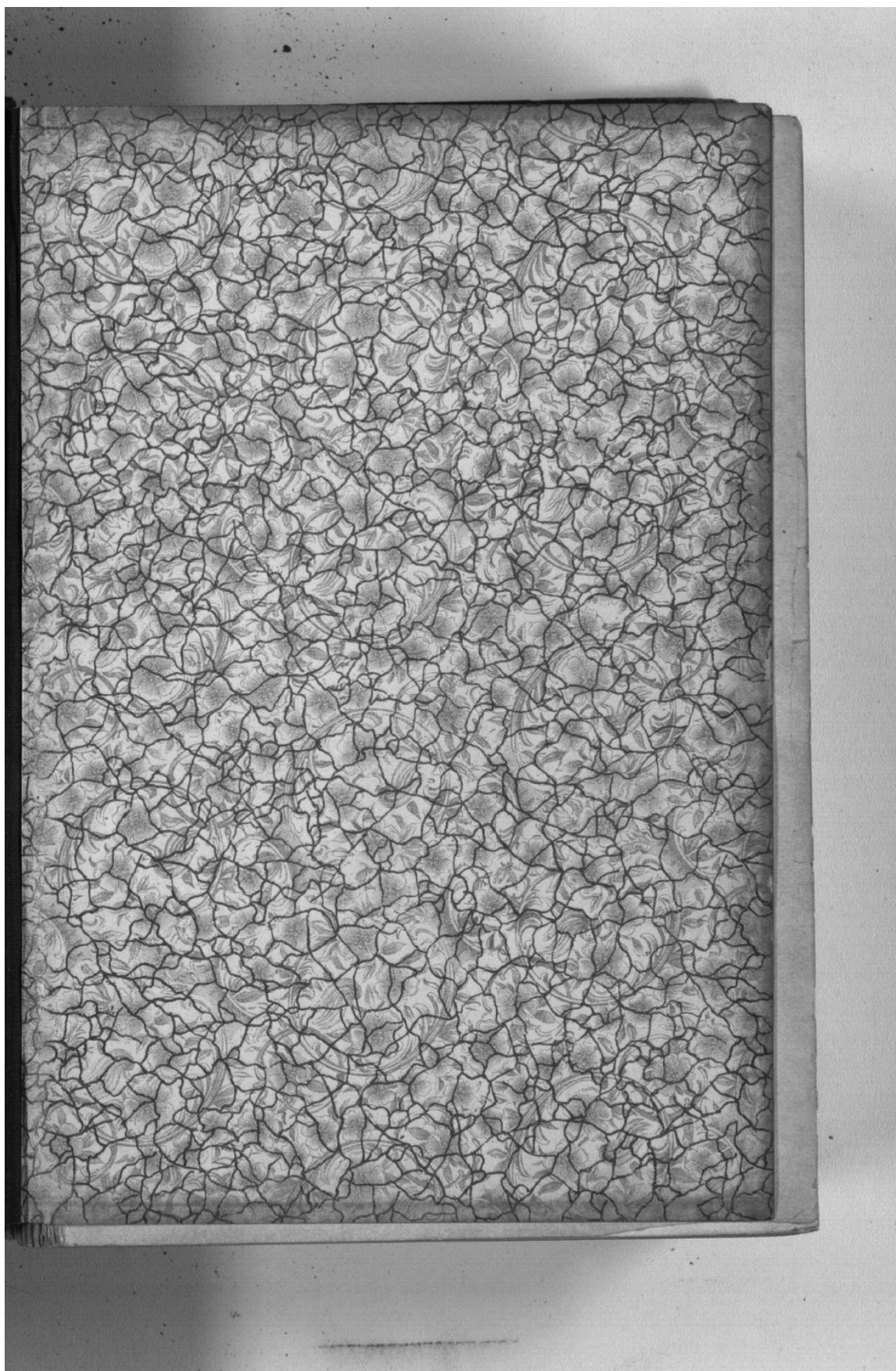
Men [and women] of Kansas



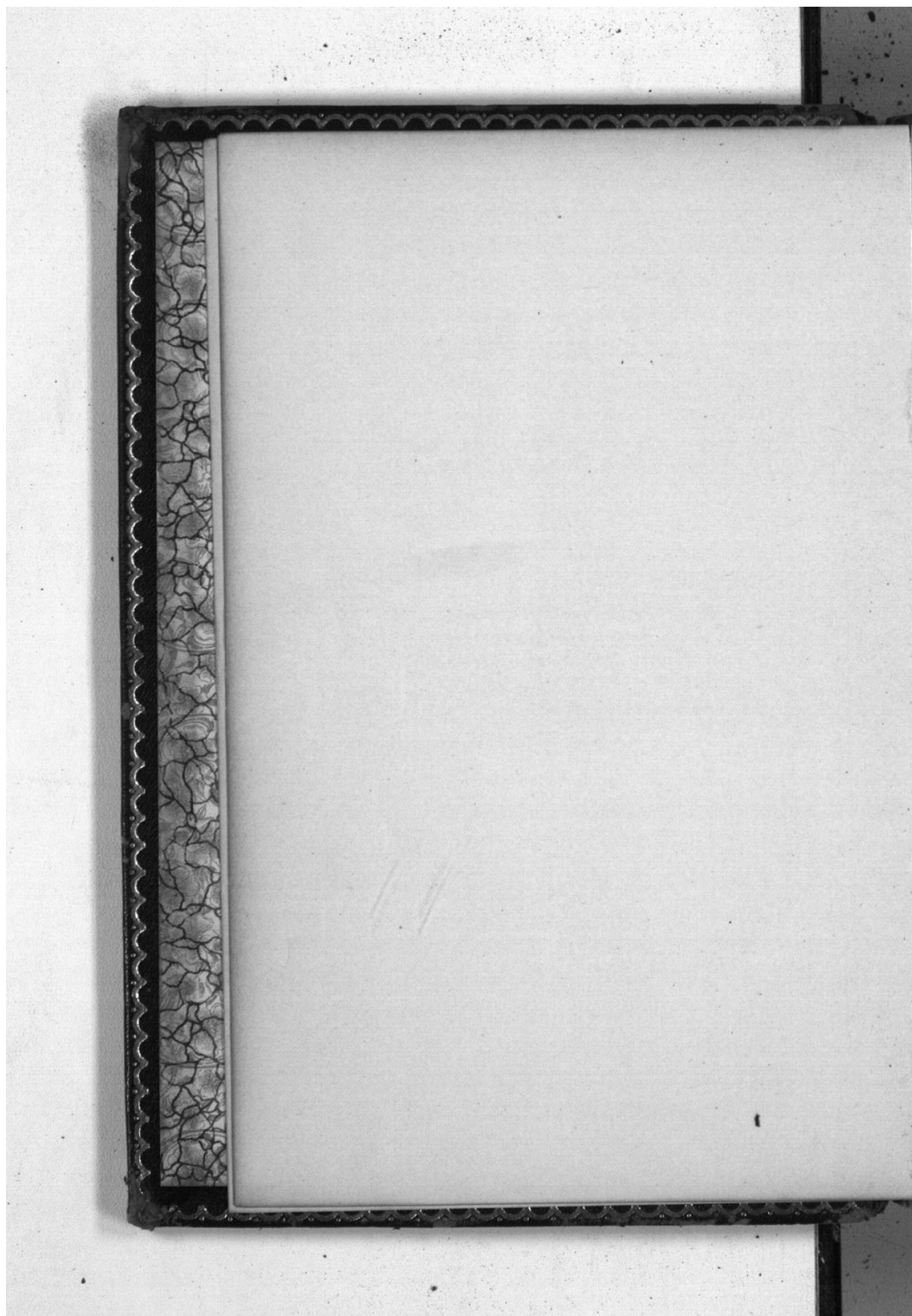














## MEN OF KANSAS

**A Collection of Portraits  
of Representative Men  
in Business, Professional  
and Official Life in the  
Great State of Kansas**

Published by The Topeka Capital  
Topeka, Kansas

Copyrighted, 1905

THE HALL LITHOGRAPHING CO., TOPEKA

K.L.  
Dup.  
T62  
C.6



### INTRODUCTION

"Know then thyself, presume not God to scan;  
The proper study of mankind is man."

ONE of the great statesmen of Kansas has said that this is an invaluable volume for him, for between its handsome covers, in compact space, are the faces of many hundred of his own personal acquaintances, including a large number of his friends and intimate associates, a desirable album which he could not otherwise obtain at many times its cost.

In presenting to the public this collection of portraits of "Men of Kansas" we have departed somewhat from the system followed by publishers of similar works.

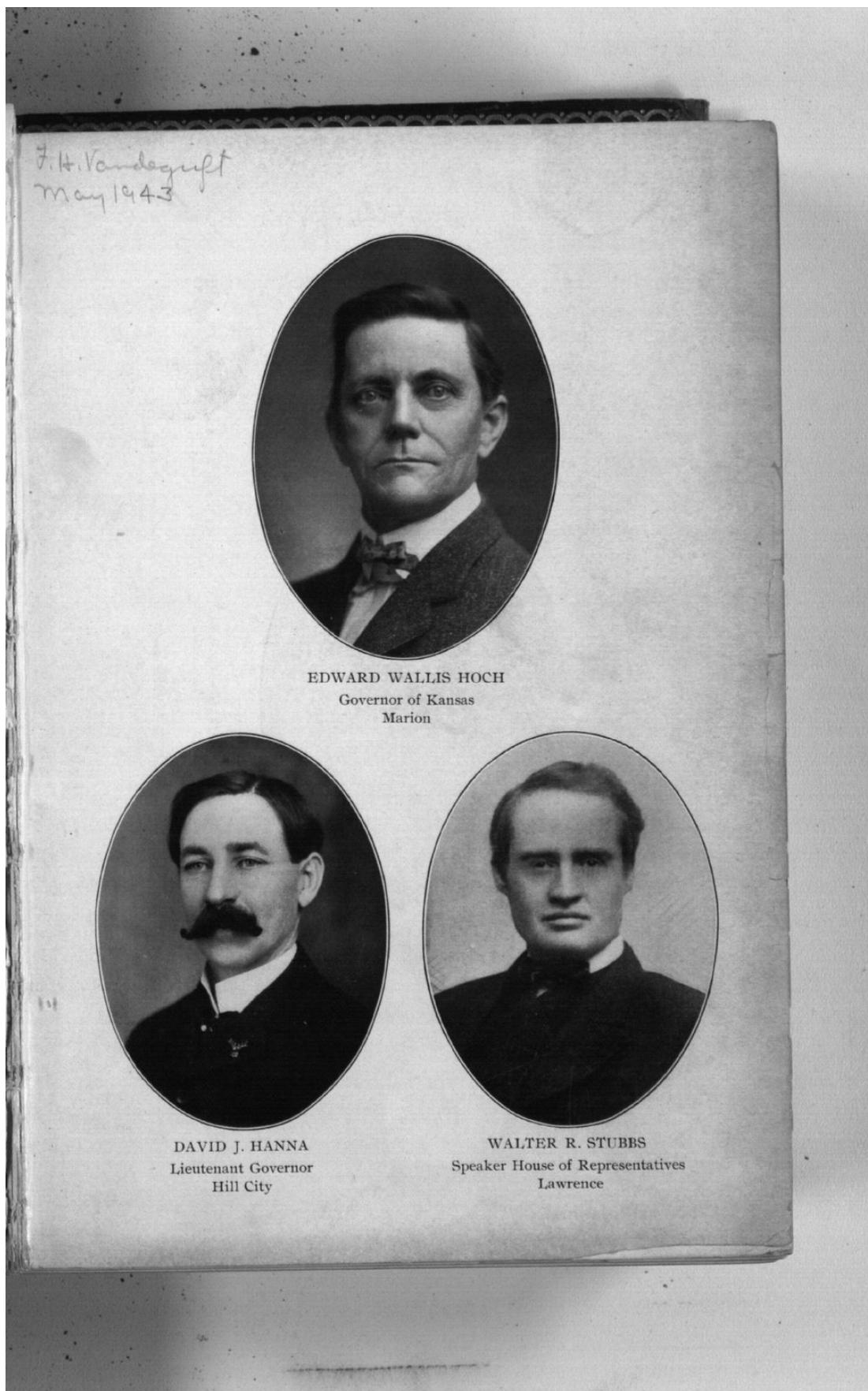
Its aim has been to secure the photographs of those men who have a representative standing in their chosen professions or business.

"Merit" and not "Money" is the passport to a place among those selected. It will be noticed that there are no biographical sketches, no fulsome eulogies.

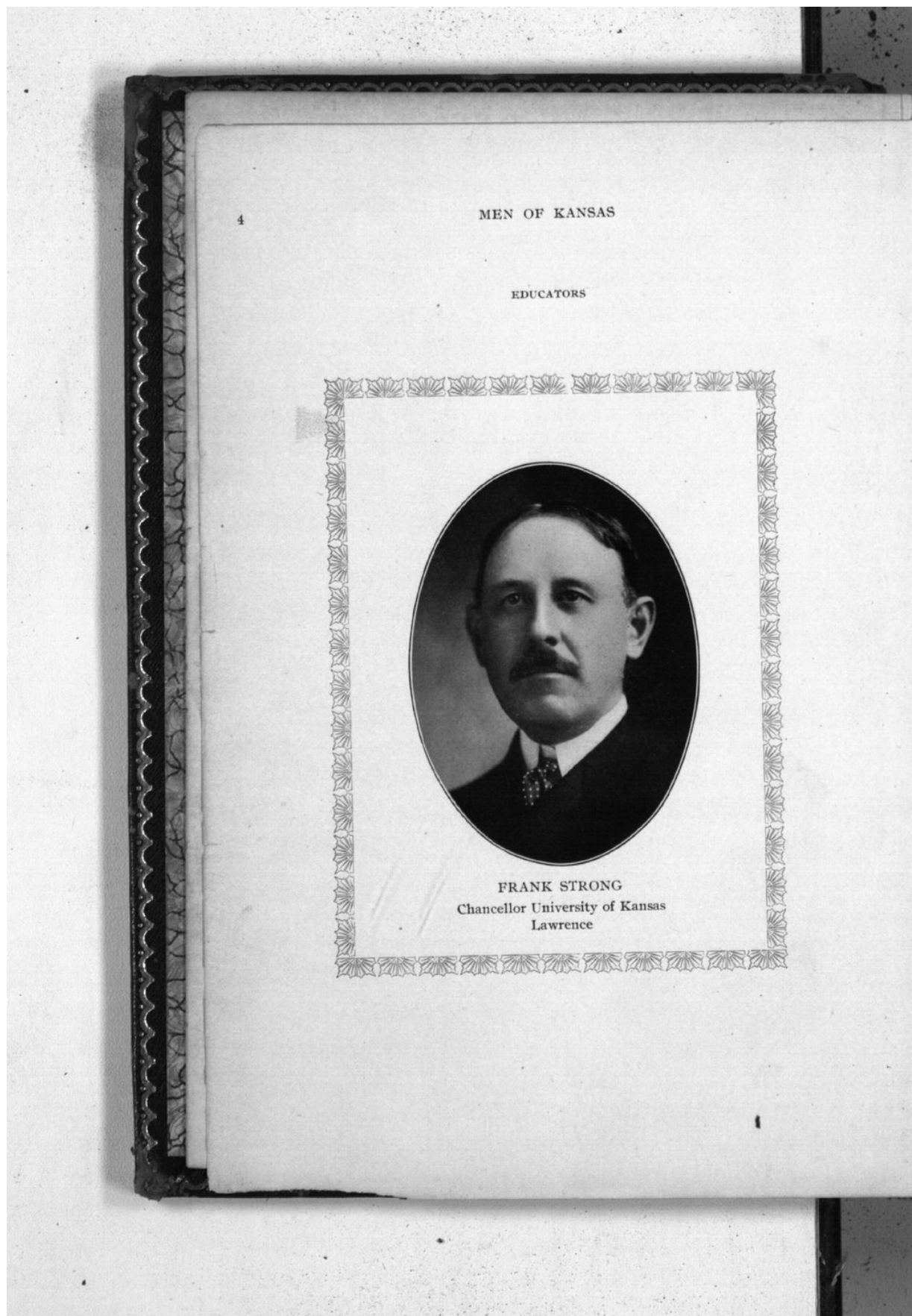
The editors have exercised such care in the selection of names that it is hoped the gentlemen whose portraits appear in this volume will appreciate the honor which has been done them in permitting them to be classified as among the representative men in their respective callings. The titles are brief, and condensed in nearly every instance to two lines below the names.

As far as possible the portraits are arranged in groups or classes. The index will show the page each portrait is on, and also the part of the book where each profession or line of business will be found.

It is hoped that in its entirety the collection will receive general approval, as it brings together the faces of so many who are today worthy of note in their respective walks of life.







MEN OF KANSAS

5

EDUCATORS



NORMAN PLASS, A.M., D.D.  
President Washburn College  
Topeka



6

MEN OF KANSAS

EDUCATORS



REV. CARL SWENSSON, Ph.D., D.D., R.N.O.\*

Late President Bethany College  
Lindsborg

MEN OF KANSAS

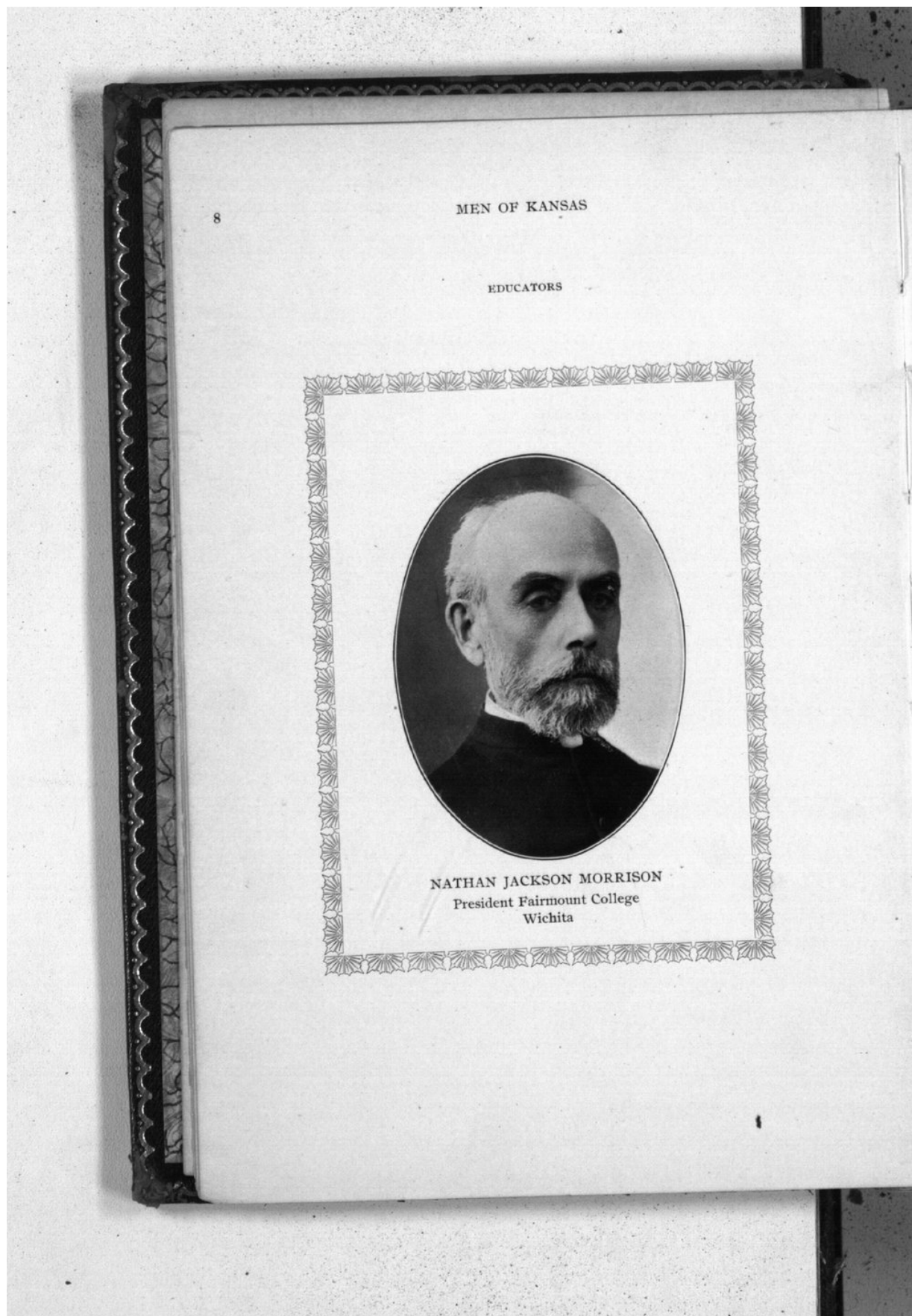
7

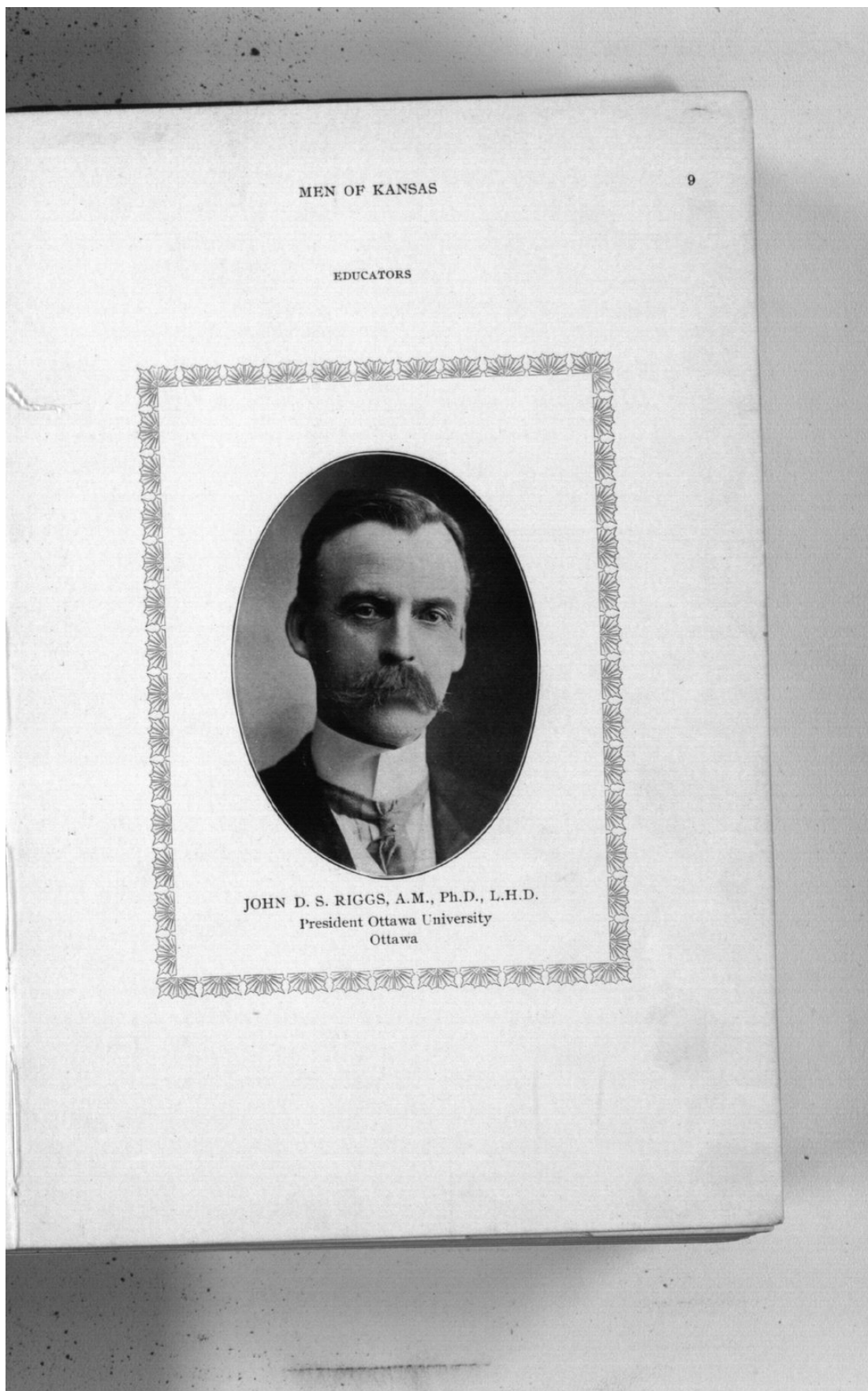
EDUCATORS



REV. ERNST F. PIHLBLAD, A.M.  
President Bethany College  
Lindsborg









10

### MEN OF KANSAS

#### EDUCATORS



H. B. PEAIRS  
Supt. Haskell Institute. (Indian Indst. School)  
Lawrence

MEN OF KANSAS

11

EDUCATORS



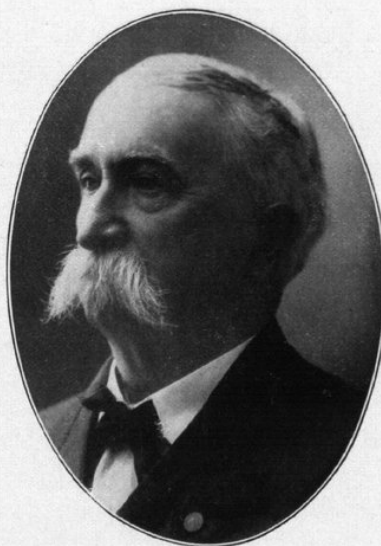
ERNEST R. NICHOLS  
President Kansas State Agricultural College  
Manhattan



12

MEN OF KANSAS

EDUCATORS



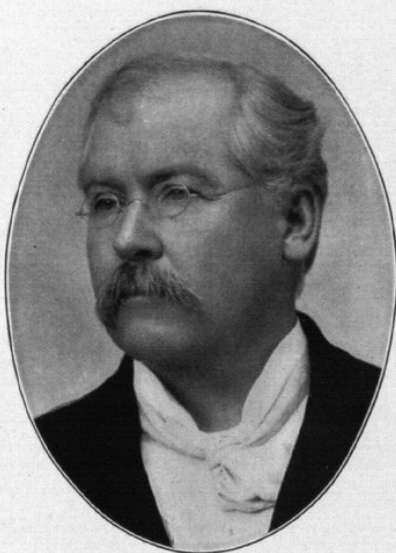
JOHN S. McDOWELL

Capt. Co. F, 77th Pa. Vol. Pres. Bd. of Rgts.  
Kan. St. Agricultural College. Smith Center

MEN OF KANSAS

13

EDUCATORS



EDMUND STANLEY

Prest. Friends University (1898—). State Supt.  
Public Instruction (1895-6). Wichita



14

MEN OF KANSAS

EDUCATORS

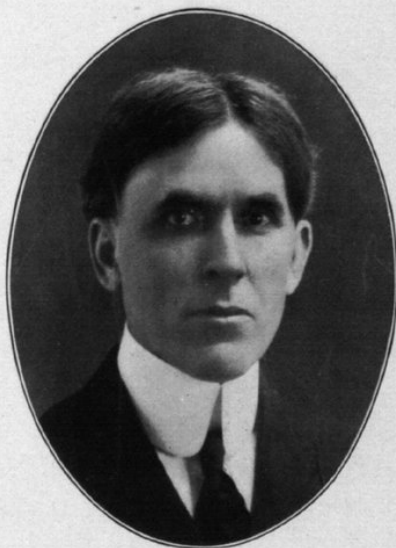


JASPER N. WILKINSON  
President State Normal Schools of Kansas  
Emporia

MEN OF KANSAS

15

EDUCATORS



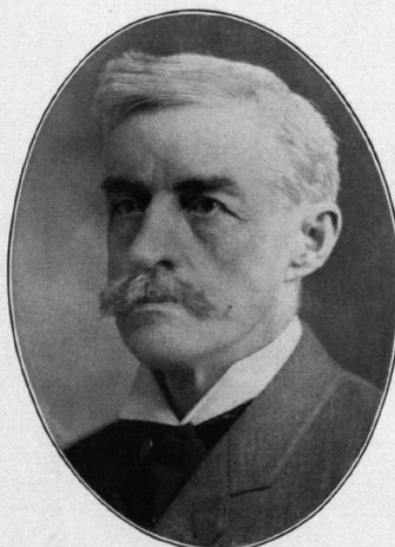
WILLIAM HAMILTON JOHNSON  
High School Visitor for University of Kansas  
Lawrence



18

MEN OF KANSAS

EDUCATORS

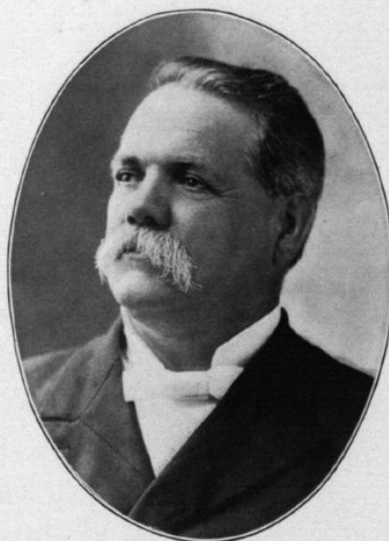


HENRY C. HAMMOND  
Superintendent Kansas School for the Deaf  
Olathe

MEN OF KANSAS

17

EDUCATORS



JOHN DANIEL WALTERS  
Professor of Industrial Art, Kansas State  
Agricultural College. Manhattan



18

MEN OF KANSAS

EDUCATORS

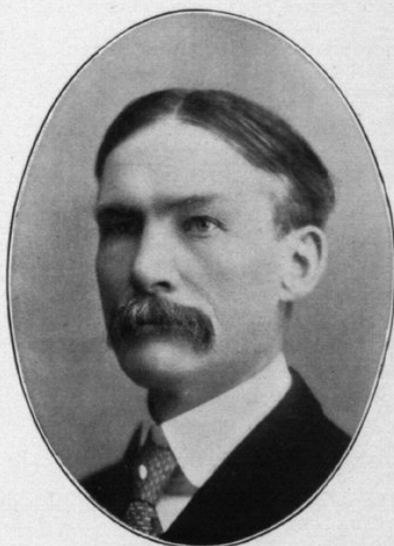


CLARENCE ERWIN McCLUNG  
Asso. Prof. of Zoölogy, Acting Dean of Medical  
School, University of Kansas. Lawrence

MEN OF KANSAS

19

EDUCATORS



FRANK WILSON BLACKMAR

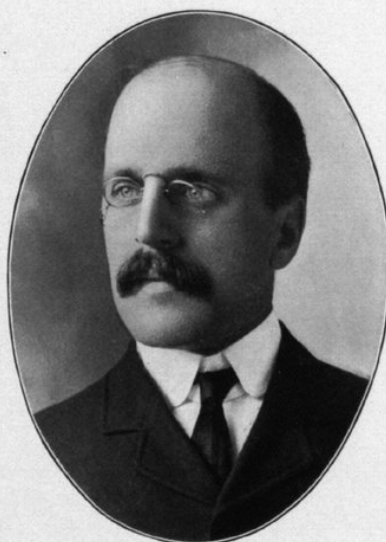
Prof. of Sociology and Economics, Dean of Graduate School, University of Kansas. Lawrence



20

MEN OF KANSAS

EDUCATORS

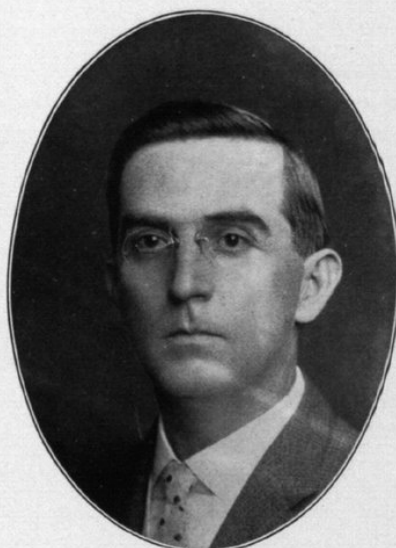


CHARLES SANFORD SKILTON  
Dean School of Fine Arts, University of Kansas  
Lawrence

MEN OF KANSAS

21

EDUCATORS



ELMER ELLSWORTH MARSHALL  
Supt. Kansas State Industrial Reformatory  
Hutchinson



22

MEN OF KANSAS

EDUCATORS



WALTER G. RISTE

Prin. Norton Co. High School. Founder N.W.  
Kansas Teachers' Association. Norton

MEN OF KANSAS

23

EDUCATORS



WILLIAM SAMUEL HEUSNER  
Superintendent City Schools  
Junction City



24

MEN OF KANSAS

EDUCATORS

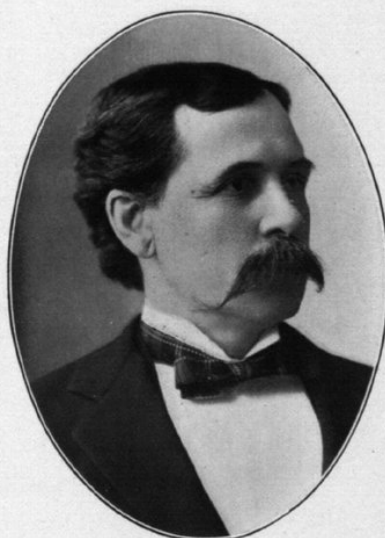


CHARLES M. ARNOLD  
Supt. Public Instruction, Phillips County  
Phillipsburg

MEN OF KANSAS

25

EDUCATORS



THOMAS W. ROACH

Pres. Kan. Wesleyan University and Kan. Wesleyan Bus. Col. V.P. Planters St. Bank. Salina



26

MEN OF KANSAS

EDUCATORS



GEORGE LAWRENCE MOODY  
President The Salt City Business College  
Hutchinson