

Kansas Master Farm Homemakers

Section 37, Pages 1081 - 1110

Two disbound scrapbooks containing photographs, newspaper clippings, correspondence, and pamphlets documenting the history of the Kansas Master Farm Homemakers and the Kansas Master Farmers.

Creator: Kansas Master Farm Homemaker Guild

Date: 1928 - 1997

KSHS Identifier: DaRT ID: 223637

Item Identifier: 223637

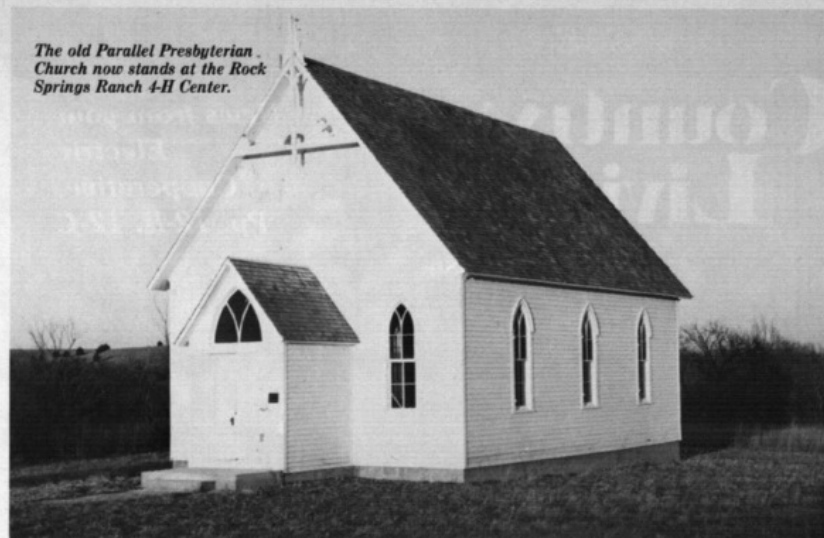
www.kansasmemory.org/item/223637



KANSAS
HISTORICAL
SOCIETY



Kansas Chamber of Commerce and Industry
in cooperation with
Kansas Master Farmer Association
Kansas Master Farm Homemaker Guild
and
Cooperative Extension Service



An Old Church Gets a New Home

For almost a century the Parallel Presbyterian Church stood at the intersection of Highways 9 and 15 in Clay County.

People in the Garfield Township community were christened there, married, and eulogized in funeral services. Families and friends often gathered there.

When the one-room church needed repairs, the men of the community made them. New wallpaper was hung by willing volunteers.

A DECLINING congregation, however, caused the merger in 1967 of the country church with the United

Presbyterian and Methodist Churches of Clifton. Since then, the church has stood vacant, and it appeared it would go the way of many old buildings and be used to store hay.

But the people of the community were determined this was not to be the fate of the Parallel Church. When they heard the Kansas 4-H Foundation wanted a country church for the historical area at Rock Springs Ranch 4-H Center, it seemed the answer to their prayers.

The church was transported 70 miles to the year-round conference center, west of Junction City, in the late fall of 1984. The move was not an easy one. Because of its great height, the roof had to be removed before transporting.

NEW WOODEN shake shingles now provide roofing, and the original cathedral ceiling is back in place. The interior has been painted and wall-

papered with paper authentic of the 1884 era. The oak floor has been refinished. The lattice work at the front of the church has been repaired and the church painted white. Work was done by Rock Springs Ranch staff.

Funds for the restoration and move were provided by the Kansas Master Farmer Homemaker Association.

At the rededication of the century-old church, Glee Smith, chairman of the Kansas 4-H Foundation Board of Directors, recognized the contributions of this association to Rock Springs. Projects include the restoration of a one-room schoolhouse and the original ranchhouse at Rock Springs.

"One of every eight Kansas youths visits Rock Springs. With your donations of the Parallel Church and the one-room schoolhouse, you have preserved a piece of history for them," Smith said. □



Janelle Larson
1985-86 Miss Teen of Kansas

246 Ford Hall
Manhattan, KS 66502
(913) 532-3084

Rt. 2
Hiawatha, KS 66434
(913) 742-3636

2-25-86

Dear Mrs. Evans and the Master Farmer-Homemakers Guild,
Thank you so much for the valentine - it was great to hear from you! The school year is going well. I really enjoy my classes and the people here. I am keeping rather busy - as you can see by my stationery, I am the reigning Miss Teen of Kansas. Last fall I was elected to the national board of directors for the American F. Herford Assoc., and this spring I was selected to ~~attend~~ represent Kansas in the Cherry Blossom Festival in Washington D.C.

I appreciate the support you have given me and other 4-Hers. Without the assistance of organizations such as yours, a college education would be very difficult to finance. Thanks again!

Sincerely,
Janelle Larson



Focus notes

Woman attends meeting

DEARBORN, Mich. - Twila Nunemaker, secretary of the Country Women's Council, attended the organization's annual meeting Sept. 15 through 17 in Dearborn, Mich.

Mrs. Nunemaker, Kansas Master Farm Homemaker Guild, resides in Langdon with her husband.



Nunemaker

Hutchinson News
Wed., Sept. 24, 1986

1987

Langdon woman named to planning committee of '89 triennial conference

LINCOLN, Neb. - Twila Nunemaker, Langdon, was named to the planning committee for the 19th triennial conference of the Country Women's Council USA during the council's annual meeting Oct. 9 through 15 at the Nebraska Center for Continuing Education, Lincoln.



Nunemaker

The triennial conference, scheduled in 1989 in Kansas City, is a worldwide event expected to attract 2,000 people.

The Country Women's Council USA consists of three national organizations: the National Extension Homemakers Council, American Farm Bureau Women and National Master Farm Homemakers Guild, as well as two societies, three regional organizations and 76 state organizations.

Mrs. Nunemaker is a representative of the National Master Farm Homemakers Guild and has been secretary of CWC for four years.



CWC Annual Meeting, 1986
Dearborn MI CWC Officers
Melba McIntosh, LA, Vice Pres
Kay Rockwell, MI, Chairman
Fayola Muchow, SD, Pres-NMPHG
Marge Griffin, OR, Treas
Twila Nunemaker, KS, Sec.



Friend
of 4-H
Welcome

Kansas Friends of 4-H Day

*Rock Springs 4-H Center
June 14, 1987*

Kansas 4-H Foundation, Inc.

Program

<i>10:00 - 1:00 p.m.</i>	<i>Registration Heritage Hall</i>
<i>10:00 - 11:30 a.m.</i>	<i>Brunch Lower Level, Heritage Hall</i>
<i>10:30 - 12:30 p.m.</i>	<i>Tours and Activities Guided Walking and Riding Tours</i>
<i>11:30 - 12:15 p.m.</i>	<i>Country Church Service</i>
<i>1:00 - 2:00 p.m.</i>	<i>Recognition Program Spencer Auditorium, Heritage Hall</i>
<i>2:00 - 3:00 p.m.</i>	<i>Congratulatory Tea Lower Level, Heritage Hall</i>



DONORS

BENEFACTOR PLAQUES

Ambassador Cards Division of Hallmark, Kansas City
Mr. and Mrs. John J. Armstrong, Muscotah
Mrs. Russell Baker, Overbrook
The Boeing Company, Wichita
Cessna Foundation, Inc., Wichita
John R. and Dianne Childs, Wamego
James and Juliet Davis Foundation, Inc., Hutchinson
Farm Credit Services, Wichita
First National Bank, Hutchinson
Harris Enterprises, Inc., Hutchinson
Sam and Dorothy Haskin, Lenexa
Hiller, Inc., Wichita
Hutchinson National Bank Charitable Trust, Hutchinson
Mabel Jensen, Burns
Kansas Association of Wheat Growers, Hutchinson
Mrs. Don Kelley, Manhattan
Mr. and Mrs. Roy C. Kinkaid, Jr., Wichita
Wilbur and Ann Levering, Topeka
Mr. and Mrs. Walter M. Lewis, Larned
The McCall Pattern Company, Manhattan
B.E. and Barbara Nordling, Hugoton
Rockwell International, Atchison
Dolph Simons, Sr., Lawrence
Fred D. and Esther Sobering, Manhattan
Martha Wreath Streeter, Manhattan
Marjorie Ann Tennant, Manhattan
Mr. and Mrs. Carl H. Tollefson, Prairie Village

25 YEAR DONORS

Dale and Mary Dean Apel, Manhattan
Mrs. Perry Counter, Oberlin
Edgar and Geneva Dies, Hays
Cecil and Phyllis Eyestone, Manhattan
Kansas Milking Shorthorn Society
Miss Frances Kirkwood, Great Bend
Mr. and Mrs. Roger E. Regnier, Manhattan
Martha Wreath Streeter, Manhattan

25 YEAR 4-H JOURNAL SPONSORS

Leavenworth-Jefferson Electric Co-op, McLouth, Jefferson County
Bank IV, Olathe, Johnson County
First National Bank of Olathe, Johnson County
Shawnee State Bank, Shawnee, Johnson County
State Bank of Spring Hill, Johnson County
State Bank of Stanley, Johnson County
Union State Bank of Olsburg, Pottawatomie County
Raymond State Bank, Raymond, Rice County



RECOGNITION ASSEMBLY

Spencer Auditorium
Heritage Hall
1:00 p.m.

Flag Day Observance

Puppeteers: Darcy, Kori and Andrew Stone,
Sarah Mitchell, Jama and Jonah Kendall,
and Jamie Colley Cico Satellites 4-H Club
Riley County

Welcome

Glee Smith Chairman, Board of Trustees

Announcement of Donor Recognitions

Benefactors, 25 and 10 Year Donors
25 Year Kansas 4-H Journal Sponsors
Glee Smith

Kansas 4-H Family of the Year 1987

Introduction of Nominated Families
Announcing: C.R. Salmon Assistant Director of
Extension 4-H-Youth Programs

Recognizing: The Gerald Scheid Family
Osage County

Rock Springs Ranch Sustaining Endowment Fund

Announcing: Glee Smith
Recognizing: Nathan and Violet Carroll
Master Farmer and Master Farm
Homemaker Association

Gifts, Memorial Dedications and Special Donations

Announcing: Bill Riley Executive Director

A Step Ahead . . . The Kansas 4-H Campaign

Announcing: Glee Smith
Assisting: Kansas 4-H Ambassadors



Gifts and Tributes

Kansas 4-H Foundation, Inc.



1987

**Kansas 4-H Family of the Year
The Gerald Scheid Family
Osage County**

Dedication and commitment to the 4-H program shines through three generations of the Gerald and Belva Scheid family. Gerald and Belva along with their five sons and four grandchildren have accumulated 170 years in 4-H.

Gerald is a life-long resident of the Vasser area. He alone has provided 48 years of leadership to 4-H which began in 1939 when he founded the Vasser Blue Ribbon 4-H Club.

Belva was a three year member of the Junior Judges 4-H Club in Franklin County and has served as a community and project leader for 34 years in Osage County.

Gerald and Belva raised five sons who were all active in 4-H. Ron, Glen, Keith, Dale and Bob won a variety of awards in a wide range of projects including: poultry, swine, dairy and beef cattle, legumes and grasses, agriculture, crops, tractor, automotive, leadership and citizenship.

Glen's children, Matt and Paige, are members of the Highland 4-H Club through the school system in Tulsa.

Libby and Gerri, Keith's children, are proud members of the Vasser Blue Ribbon 4-H Club which is the third generation of Scheids in the club Gerald started.

4-H is definitely a "family tradition" for three generations of the Gerald and Belva Scheid family.

**The Gerald Scheid Family
Gerald, Belva, Ron, Glen
Keith, Dale and Bob**



SCHOLARSHIPS

JOHN JUNIOR AND ULA ARMSTRONG SCHOLARSHIP

1987 will be the first year to award the \$400 Armstrong scholarship. It is provided in recognition of the Armstrong family's 60 years as 4-H members, parents and leaders.

John Junior was a charter member of the Rose Valley Rustlers 4-H club in Atchison County. Ula was a member of the Benham 4-H club of Shawnee County. Their sons Jay and Rex were 4-H members in Atchison County. The Armstrongs are farmer-ranchers in northwest Kansas. John Junior served 34 years on the Board of Directors of the Kansas Farm Bureau, 11½ years as president.

RAYMOND G. FRYE ROCK SPRINGS RANCH CAMPER SCHOLARSHIP FUND FOR SUMNER COUNTY 4-H'ERS

A gift of \$10,000 by Raymond Frye permanently endows a camper scholarship program he initiated in 1981. Established to provide financial assistance for Sumner county 4-H'ers attending camp at Rock Springs 4-H Center, over 150 youth have already been recipients of Frye "camperships."

Raymond Frye exemplifies a lifetime devoted to education, a special interest in 4-H and Rock Springs Ranch, and a concern for the well being of his community and state. A former teacher, agriculture bank representative and county Extension agent, he has always been of service to others.

His Rock Springs Ranch support includes: Frye Workshop, 1981; swimming pool renovation, 1983; Frye Sundeck and Snack Bar, 1984; initial donor to the Rock Springs Ranch Sustaining Endowment Fund, 1983; and since 1965 has been responsible for gift solicitation of the Sumner County 4-H Friends.

W.H. HICKS 4-H SCHOLARSHIP

Perpetuating a long-time interest in 4-H, Bill and Olive Hicks of Goodland have established two \$500 scholarships with recipient selection to be based on scholarship, leadership and achievement.

Engaged in farming, the Hicks were selected a Kansas Master Farmer-Homemaker family in 1968. Daughter, LuAnn, was an IFYE to Scotland in 1955.

Bill and Olive Hicks have been contributors to the 4-H program of Kansas through the Kansas 4-H Foundation for 31 years.



KANSAS ASSOCIATION OF WHEAT GROWERS RESEARCH FOUNDATION 4-H SCHOLARSHIP AWARD

With a basic purpose to improve the wheat industry of Kansas, the Kansas Association of Wheat Growers Research Foundation has established a \$500 annual college scholarship for a 4-H'er enrolled in agronomy or plant science at Kansas State University.

The Kansas Association of Wheat Growers seeks to improve the economic well-being of its members by working to improve the marketing process of Kansas wheat, by helping members to update production and management techniques, by working with the industry to promote orderly marketing, and by working for legislation helpful to the industry.

The Kansas Association of Wheat Growers is located in Hutchinson.

ROY B. AND ELIZABETH CURRY OYER MEMORIAL SCHOLARSHIP

Established with funds received from the Roy B. Oyer estate and contributions from Elizabeth Curry Oyer, two \$1,000 college scholarships will be awarded on an annual basis beginning in 1987. Selection preference will be given to students enrolling in agriculture with a special interest in agronomy or soil conservation.

Roy Oyer (1900-1984) worked for the Department of Agriculture in soil conservation for more than 30 years in various Kansas communities. Elizabeth Oyer had a combined service career of more than 25 years as a teacher and principal. As a Kayette sponsor she directed 47 sessions of Kayette Leadership Camp during 25 years until her retirement in 1969.

THERESA ANN TOLLEFSON MEMORIAL FUND SCHOLARSHIP

The Theresa Ann Tollefson Memorial Fund Scholarship established to be awarded for the first time in 1987 is a \$500 scholarship for a graduate or undergraduate at Kansas State University.

Established in her memory by husband Carl, the scholarship honors her dedication of service to others as a teacher, church volunteer, 4-H leader, mother to their four children and homemaker for their 44 years of marriage.

"THEIRS WAS THE GLORY . . . OURS IS THE HERITAGE"



IN RECOGNITION OF FLAG DAY, THE KANSAS 4-H FOUNDATION WOULD LIKE TO PAY SPECIAL TRIBUTE TO THE RED, WHITE AND BLUE WHICH SYMBOLIZES COURAGE, PURITY AND JUSTICE. THE AMERICAN FLAG IS THE HONORED SYMBOL OF A GREAT, POWERFUL, YET HUMBLE NATION — A NATION DEDICATED TO THE IDEALS OF SELF GOVERNMENT, EQUALITY AND FREEDOM.

THE KANSAS 4-H PROGRAM STRIVES TO PROVIDE OPPORTUNITIES FOR TODAY'S YOUTH TO EXPLORE AND DISCOVER THE SACRIFICES OUR FOUNDING FATHERS MADE FOR THE RIGHTS ENTITLED US BY THE UNITED STATES CONSTITUTION.

THE AMERICAN HERITAGE HALL OF KANSAS WAS DEDICATED ON OCTOBER 8, 1972. IT IS A TRAINING CENTER PROVIDED BY THE PEOPLE OF MID-AMERICA TO "ENCOURAGE THE STUDY OF CITIZENSHIP, THE TEACHING OF PRIVATE ENTERPRISE SYSTEM, THE AMERICAN WAY OF LIFE, AND THE PERPETUATION OF OUR AMERICAN HERITAGE."

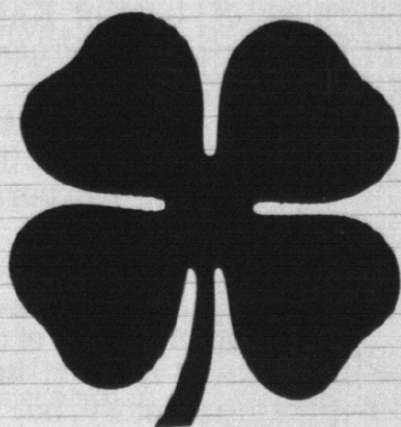
HERITAGE HALL HOUSES MANY ACTIVITIES FOR THE 4,000 YOUNG PEOPLE PARTICIPATING IN THE CITIZENSHIP AND GOVERNMENT PROJECT IN KANSAS. PLEASE JOIN US AS WE HONOR AMERICA'S SYMBOL OF LIBERTY AND JUSTICE FOR ALL.



The successful completion of Phase I of the Step Ahead Campaign has involved the efforts of many donors. As the campaign progresses, all donors will be honored with Step Ahead contribution recognition.

Great strides were taken in achieving the first one million dollars through the significant generosity of key initial contributors. We acknowledge their commitment to the future of Kansas 4-H and express appreciation to:

Ambassador Cards Division of Hallmark, Kansas City
Mr. and Mrs. John J. Armstrong, Muscotah
Bank IV, Wichita
Boeing Company, Wichita
Cessna Foundation, Inc., Wichita
Collingwood Grain, Hutchinson
Richard Dillon, Hutchinson
Dillon Stores of Kansas, Hutchinson
Raymond Frye, Wellington
Olive Garvey, Wichita
Harris Enterprises, Inc., Hutchinson
Hutchinson National Bank Charitable Trust
Bal Jeffrey, Topeka
Mr. and Mrs. J. Harold Johnson, Manhattan
Kansas Farm Bureau, Manhattan
Mr. and Mrs. Roy C. Kinkaid, Jr., Wichita
Krause Charitable Trust, Hutchinson
McCall Pattern Co., Manhattan
R.R. Osborne, Olathe
Mrs. Deal Six, Lawrence
Mr. and Mrs. Glee S. Smith, Jr., Larned
Sunderland Foundation, Kansas City
Mr. and Mrs. Dwane Wallace, Wichita
Mrs. Violet J. Carroll Wild, Ransom



A Step Ahead

The Kansas 4-H Campaign



What Is The Campaign?

For 80 years, 4-H has spoken loudly in Kansas. Leaders in every field consistently attribute many of their speaking, management and organizational skills to their 4-H experiences.

You've heard them. You know them. You probably are among them.

Today, the Extension-Foundation partnership builds on that 80-year history. Together, these dedicated supporters have designed A STEP AHEAD to build more permanent statewide funding support for the 4-H program.

A STEP AHEAD emphasizes permanent endowments to ensure the future of Kansas 4-H and Youth Programs.

A STEP AHEAD brings 4-H to the attention of Kansas' corporate and civic leadership.

A STEP AHEAD reminds all of us that Kansas 4-H does, indeed, have a history, but that its future is important to us, too.

A STEP AHEAD will do exactly that: Move Kansas 4-H a giant step ahead!

What Is The Plan?

PHASE I

Phase I was the foundation for a successful campaign. Trustees and staff were deeply involved in this initial step.

PHASE II

Phase II is actually the public opening of the campaign.

PHASE III

Phase III is the real grassroots element of the campaign. Major emphasis will be county and 4-H club participation to complete the goal. All interested 4-H clubs, local organizations and individuals will be asked to take part in Phase III.



What Are The Objectives?

A major fund drive, to be successful, should provide benefits greater than the total dollars involved. The following objectives establish guidelines for the campaign.

- Increase public appreciation and support for 4-H.
- Increase long-term availability of annual funds.
- Broaden the donor base.
- Insure permanent funding through an endowment program.
- A new Rock Springs special education facility.
- Provide care of 4-H facilities through permanent endowment.
- Provide 4-H Program planning funds in 1986 and 1987.
- Improve county fund raising effectiveness.
- Create recognition for Kansas 4-H Program in the National 4-H Center

Phase I Reaches \$1 Million Goal

A STEP AHEAD, the campaign for Kansas 4-H, is off to a great start.

Already, over \$1 million has been committed, completing Phase I, according to Richard Dillon and Balfour Jeffrey, co-chairmen of the campaign.

Members of the board and other volunteers all had a part in reaching this goal, which includes significant gifts from donors across the state.

Now that the first phase has been so successful, it's time to begin Phase II.

This second step provides for the public solicitation of support from groups who have specific interest in the 4-H program. This includes the Extension professional staff, key individuals in counties throughout the state, corporations and foundations not involved in Phase I, and other special audiences.



WHERE DOES THE MONEY GO?

■ Kansas 4-H Program Restricted Fund

In 1985, \$100,000 funded more than 80 trips, awards and scholarships, providing tremendous motivation and learning for our Kansas 4-H members. The campaign will provide these funds for the 1986-87 years. \$200,000

■ Kansas 4-H Program Endowment Fund

A permanent fund of \$1,000,000 will ensure: adult volunteer training and recognition programs; team volunteer training and recognition; state-wide marketing of 4-H; more educational scholarships; support for innovative county 4-H programs; special achievement and donor recognition. \$1,000,000

■ Kansas 4-H Foundation Support

The Foundation is a full partner in the Kansas 4-H program, managing several facilities and providing countless services. \$250,000 in the campaign will help this partner which is a catalyst in securing financial support for significant programs. \$250,000

■ National 4-H Center

Look at the benefits from National 4-H for Kansas in 1985-2,000 county medals, 30 National 4-H Congress trips, and 14 scholarships with a value of \$28,000. Not to mention international programs and other support. The Kansas courtyard at the National 4-H Center will express appreciation and ownership. \$100,000

■ Rock Springs Ranch Sustaining Endowment

Funds from this trust go toward general maintenance and utilities so that user fees can be kept as low as possible. A long-range goal of \$2,000,000 has already been established, and this campaign will add \$200,000 to that. \$200,000

■ 4-H Program Unrestricted Fund

Each year, county extension agents and specialists submit proposals which are evaluated and prioritized by a committee of agents. Funding is needed so that Kansas 4-H can be responsive to these creative, up-to-date ways of reaching our young people. \$250,000

■ Rock Springs Ranch Educational Building

Erect an 8,000-square-foot Educational Building for specialized learning and workshop space. \$400,000

■ Campaign Operating Expense

So far, most campaign expenses have been met by special contributions from the Foundation board members. Completing A STEP AHEAD with a goal of \$2.6 million over a three-year period is projected to be an estimated \$200,000. \$200,000



Kansas 4-H Foundation, Inc.



DONORS

10 YEAR DONORS

John A. and Grace S. Adair, Atchison
Clyde and Lois Albers, Chapman
Beesley Farms, Inc., Gove
E.A. Bryant, Dighton
Kenneth and Maxine Burkhard, Manhattan
Keith and Ann Carr, Manhattan
Dr. and Mrs. Irwin J. Collinge, Emporia
Finnup Foundation Trust, Garden City
First National Bank, Wellington
Mr. and Mrs. Ralph L. Gross, Garden City
Mrs. Warren G. Harding, Colorado
Hartford State Bank, Hartford
Haysville State Bank, Haysville
Max and Kayann Heinly, Manhattan
Mr. and Mrs. Gordon E. Hoyt, Wichita
George L. Huyett, Berryton
Kenneth and Vera Kaiser, Paola
Kansas Beef Council, Topeka
Kansas Independent Oil and Gas Association, Wichita
Whitt E. and Betty J. Laughridge, Cottonwood Falls
Norman and Nadine Lee, Junction City
Mrs. Martin Lindon, New Hampshire
Marshall and Sharon Miller, Emporia
Margaret G. More, Junction City
Mulvane State Bank, Mulvane
Charles Munson Family, Junction City
Elmer R. and Ellen B. Musil, Burdett
Mrs. Margaret Park, Wichita
Dr. and Mrs. Wilber E. Ringler, Manhattan
Mr. and Mrs. Andrew Setter, Humboldt
Dan L. Shattuck, Ashland
Smith County State Bank and Trust Company, Smith Center
The Stock Exchange Bank, Caldwell
Brad and Karen Streeter, Manhattan
Leon A. and Elizabeth Sucht, California
Sumner-Cowley Electric Cooperative, Inc., Wellington
Robert and Iva Teagarden, LaCygne
Dwight H. Thompson, Jr., Pratt
George and Lorene Visser, Riley
John H. and Irene Vogel, Lawrence
Keith and Celia Walton, Peck
Mr. and Mrs. K. Dale Werner, Sharon
Mr. and Mrs. Raymond Whitehair, Abilene
Mr. and Mrs. R.E. Wilson, Wellington



Gifts and Memorials

MEMORIALS AND TRIBUTES

- Frances Spielman — Coffey County
Scholarship
- Clarence Lauer — Dickinson County
Church Furniture

GIFT

- Mrs. Don Kelley — Riley County
Church Organ

CAMPAIGN MEMORIALS AND TRIBUTES

- W. Dale Critser — Sedgwick County
Educational Building
- J. Harold and LaVerne Johnson — Riley County
Educational Building
- Bess Tennant — Riley County
Educational Building

TREE MEMORIALS

In Memory Of

- Larry D. Hendrix *Pin Oak*
Extension Specialist Community Development — Finney County
- Clarence Lauer *Sugar Maple*
Master Farmer — Dickinson County
- Leon Riffel *Red Oak*
4-H Member, Leader & Advisory Council — Dickinson County
- Zoa Ann Worden *Sugar Maple*

In Tribute To

- Crazy Buddies *Red Oak*
- Ken McGinness *London Plane*
For 35 Years of 4-H Service — Johnson County

BOOK MEMORIALS

Hugh Boyce	Cecil McFadden
Carl Brose	Preston McNally
C.V. Cochrane	Herbert Niles
Darrell Dee Cox	Virginia Nunemaker
Frank Dale	Louisa Poole
Edward Dickerson	Hubert Redden
Bill Falley	Leon Riffel
Karen Fickel	Mrs. Milton Rohrer
Ken Frownfelter	Ray Tillotson
Dan Geis	Berneice Urkevich
Joe Lewis	Otto Vahsholtz
Raymond Konzem	Mrs. Peg Wempe
Rose Mathes	Margaret Wiens



Nominated Families
KANSAS 4-H FAMILY OF THE YEAR

Corky Albright Family, Jackson County
Gary Bartley Family, Pottawatomie County
Philip Bentz Family, Cloud County
Leon Betts Family, Finney County
Jack Black Family, Pratt County
Thaine Boone Family, Woodson County
Dean Hinshaw Family, Reno County
Larry Huck Family, Scott County
Robert Kemmerer Family, Jewell County
Delbert Larson Family, Brown County
Mel Martinek Family, Finney County
Richard Molitor Family, Kingman County
Leon Musselman Family, Clay County
Bill New Family, Leavenworth County
Larry Ochs Family, Hamilton County
Gerald Scheid Family, Osage County
Bill Sharp Family, Riley County
Leon Steffen Family, Pawnee County
Leroy Wasmund Family, Franklin County
Marion Watts Family, Sumner County

APPRECIATION

Kansas 4-H Ambassadors
and
Riley County Clovers
program assistants

Rock Springs 4-H Center Campers
from Dickinson, Geary, Marion,
McPherson, Rice and Saline Counties
piano music at brunch

College Avenue United Methodist
Senior High Youth
country church service

Miss Sally Sharp
piano music at tea

Rock Springs Ranch Committee
and
Former Rock Springs Summer Staffers
tour guides

Riley County Historical Museum
flag exhibit

AMVETS
and
National Flag Foundation
flag material



Class of 1986

Kansas

**Master Farmer
and**

**Master Farm
Homemaker**



Welcome Class of 1986

The Kansas Master Farmer organization and the Master Farm Homemaker Guild were formed in the late 1920s to give public recognition for excellence in farming, homemaking, farm living, and rural citizenship.

Initially, the program was sponsored by the Kansas Farmer magazine, and recognition was given to individuals, as opposed to farm couples as is the case today. In 1953, Kansas State University, through the Cooperative Extension Service, assumed responsibility for handling the details of selecting Master Farm couples and setting up the recognition banquet.

Since 1957, the program has been sponsored by the Kansas Chamber of Commerce and Industry, again in cooperation with the Extension Service, and spouses of members selected prior to 1953 have been offered membership.

Selection of Master Farmer–Master Farm Homemaker couples is accomplished through the five Extension administrative districts. County Extension Councils submit nominees to the Director of Extension who appoints a committee to pick one couple from each area. Selection of a sixth couple is rotated among the five areas. This year the northeast area is represented by two couples.

As the 1986 Master Farmers and Master Farm Homemakers, you have proven that you possess the high standards of achievement that have made Kansas farming what it is today.

Your fellow Kansans are proud of you, and your fellow members welcome you to the Kansas Master Farmer–Master Farm Homemaker organization.



PROGRAM

Friday, March 20, 1987

Edward G. Bruske, Toastmaster
President and Chief Executive Officer
Kansas Chamber of Commerce and Industry

Invocation Marvin McReynolds
Chaplain, Master Farmer Association
Class of 1976

Introduction of Guests Edward Bruske

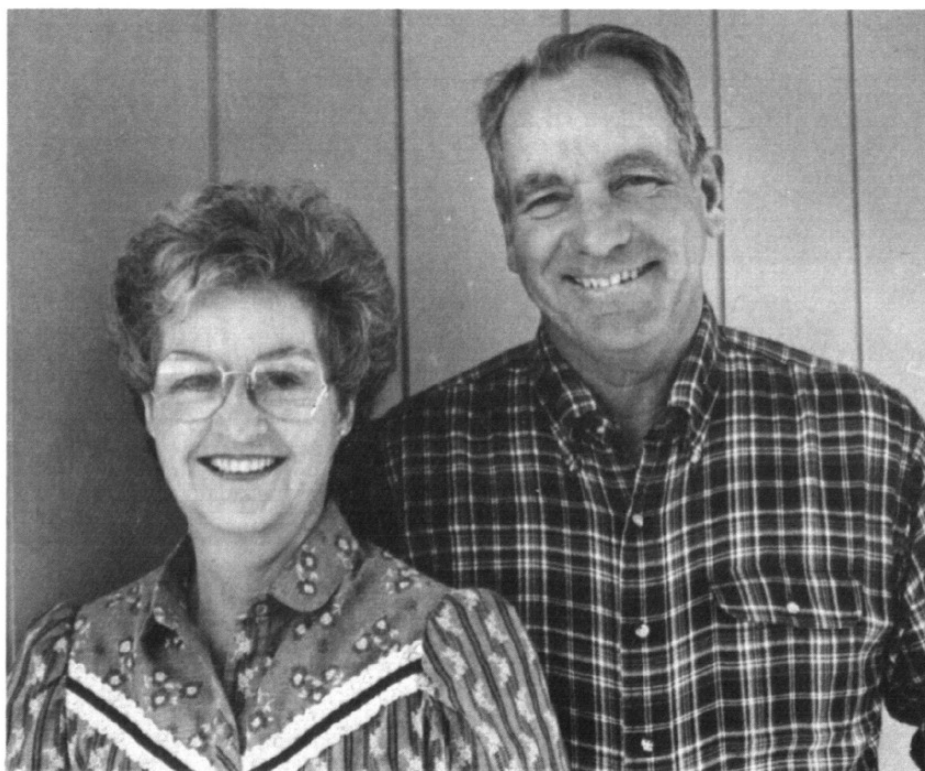
Recognition of Class of 1961 Fred L. Poston
Associate Director of Extension

Mrs. Lawrence Bolinger, Kingman County
Mr. and Mrs. Harold Crist, Scott County
Mrs. Harry Smith, Morton County

Introduction of Class of 1986 Edward Bruske
Thayne Cozart
Publisher, Farm Talk

Welcome to Class of 1986 Mrs. Lois Strauss
President, Master Farm Homemaker Guild
Class of 1978

Floyd Coen
President, Master Farmer Association
Class of 1976





Bob and Bonnie Edwards

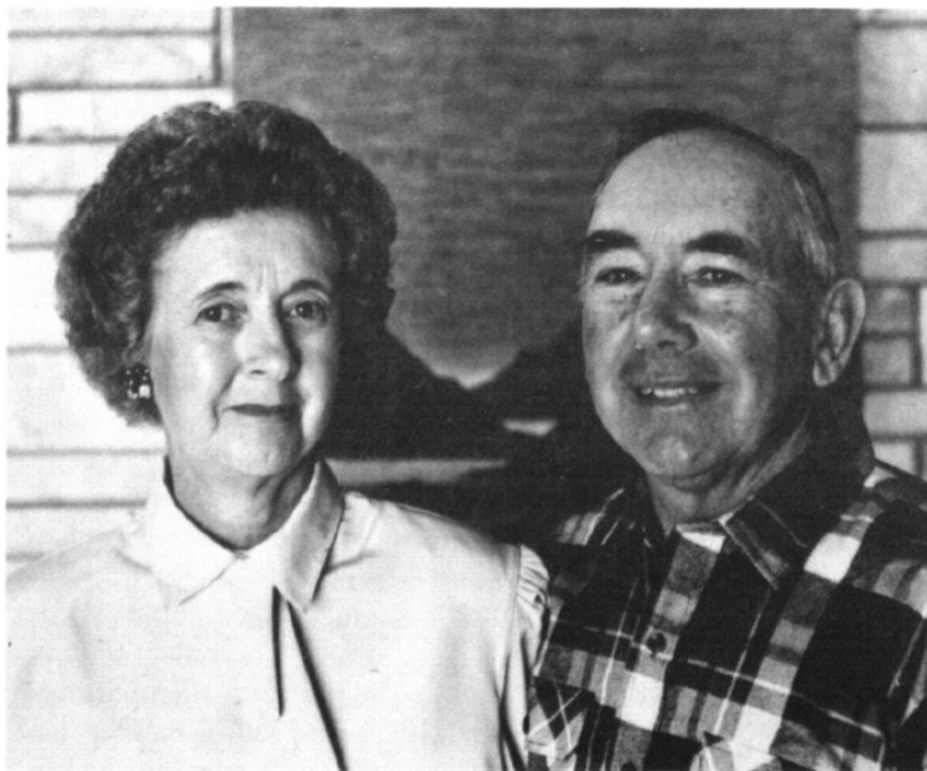
Pottawatomie County

Situated in the Flint Hills near Olsburg, the ranch of Bonnie and Bob Edwards is primarily native pasture and a model of range management and conservation practices. But in 1955 when the couple bought the 1,300 acres, the land was so overrun with cedars and brush they sometimes lost cattle. There were few out-buildings, and the couple set up housekeeping in an 80-year-old rock house.

For 8 years they ran a Grade A dairy but then turned to registered Angus and the start of the commercial crossbred herd they have now. They acquired an additional 190 acres of cropland where they grow grain to feed their livestock. Clearing 50 to 75 acres of land a year, rotating pastures and burning systematically has turned the brushy pasture to lush grassland.

Son Bill joined the operation in 1981. The father and son team use a variety of marketing strategies, including forward pricing, contract sales, futures and hedging. Conservation remains uppermost—for both pastures and farm ground. They use no-till planting and sometimes use their equipment in neighbors' fields to encourage reduced tillage.

Active in their church and in farm and civic organizations, the Edwardses, with children Bill, Jenni, and Kathy, have been a 4-H family. Bonnie, a home economics teacher at Blue Valley High School, holds a bachelor's and master's degrees from K-State; Bob also graduated from K-State, as did Bill and Kathy. Jenni attended K-State and received a degree in nursing from Wichita State University. The children, all married, live within a 50-mile radius of their parents. There are four grandchildren.





Fielding and Jean Hands

Finney County

Instead of buying a lot of land after their marriage in 1945, Fielding and Jean Hands took what they thought was a better route. They bought a quarter section, no small transaction in those days, but they rented 720 acres, which included the farmstead established by Fielding's parents. Those decisions set the course for future family farming and cattle operations.

Fielding and Jean, who have lived on that place since they were married, say they "rented or bought land that we could afford and as it became available." In the 1970s, Fielding and the Hands' three sons, Sam, Gregory and Cedric, formed a partnership called the Triangle H Grain and Cattle Co. Altogether, land owned and rented by the partnership totals 5,500 acres. More land is rented than owned. Center pivot systems irrigate 24 quarter sections.

Fielding has always raised eyebrows in southern Finney County with his crop yields. Last year, for example, wheat averaged 74 bushels per acre irrigated and 39 dryland; grain sorghum averaged 134 and 55; corn averaged 164 irrigated.

Fielding feeds some of the crops to livestock in the family's cow-calf, stocker and feedlot enterprises. To spread their risks, the Handses do some custom feeding.

This family of leaders has long engaged in church, civic, extension, 4-H, FFA, agricultural, business, social and school activities, received numerous awards, and hosted farm groups, including overseas visitors. The couple lives in a red brick home with white trim on the farmstead they rented when they married but now own.

Fielding and Jean, whose three sons are K-State graduates, believe that hard work, teaching children to work hard, and being cautious about borrowing are principles that would serve well any couple starting in agriculture today.





Harry "Hap" and Kathryn Jackson

Greenwood County

Harry "Hap" and Kathryn Jackson operate a 5,000-acre ranch, including 1,100 deeded acres, devoting 200 acres of wheat and brome to pasture. Except for 60 acres of woodland and 20 acres of alfalfa, the remainder is pasture and ponds. The brome on the ranch and on most neighbors' pastures is from seed Jackson imported in 1948.

The Jacksons have a 200 cow-calf enterprise and in summer custom graze between 700 and 1,400 head.

The Jacksons filled in washouts, built six miles of terraces, three miles of head ditches, dozens of retaining dams and 13 ponds to hold back the thin Flinthills topsoil and stocked the ponds with fish. Then they removed gravel from a silted-in river to surface their roads and reclaim spring fed streams.

The Jacksons moved in to an old farm house on rented land when they were married in 1932. Even with the risks involved in improving rented property, they plowed in terraces, planted trees, cleared brush and improved roads. They reconditioned walls and floors, painted and added a bathroom. And in 1967, 15 years after they bought the place and were thinking about building a new home, their children insisted it wouldn't seem like home. So they remodeled instead. Using material from two old houses, a school and a barn, they added on to and renovated the 155-year-old house.

They hosted 57 foreign visitors and several city youth exchanges.

The Eureka area couple has two daughters, Mrs. Raymond (Kathy) Drake, Wichita; and Mrs. Brian (Margie Lu) Swisher, Independence; a son, Eddie, Great Bend; and seven grandchildren.

The Jacksons have been involved in numerous 4-H, ag, extension and church activities and received awards for their conservation activities.

