

## Fraser Hall at the University of Kansas in Lawrence, Kansas

A pamphlet giving the dimensions and floor plans for Fraser Hall at the University of Kansas in Lawrence, Kansas. Built in 1872, it was named for John Fraser the university's second chancellor.

Date: 1872

Callnumber: SP 378 W Pam.v.3

KSHS Identifier: DaRT ID: 221058

Item Identifier: 221058

[www.kansasmemory.org/item/221058](http://www.kansasmemory.org/item/221058)



## Fraser Hall at the University of Kansas in Lawrence, Kansas

SP  
378  
W  
Pam. v. 3

### University of Kansas



KANSAS STATE  
HISTORICAL SOCIETY

#### DIMENSIONS.

Length.....	246 ft.	Width of Wings.....	62 ft.
Width of Middle.....	98 "	Hight of Observatories.....	95 "

#### FOUR STORIES INCLUSIVE OF BASEMENT.

Basement.....	10 feet high in clear.
First Story.....	15 " " " "
Second Story.....	14 " " " "
Third Story.....	13 " " " "
Hall, 56 by 94.....	35 " " " "

#### APARTMENTS.

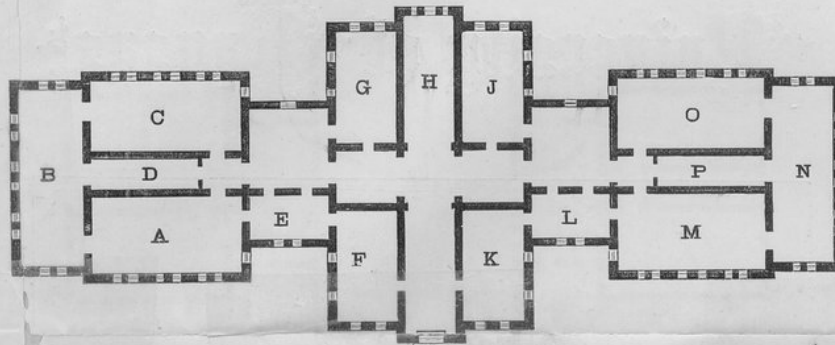
8 Rooms.....	23 by 45 ft.	8 Rooms.....	18 by 33 ft.
8 ".....	21 " 45 "	2 ".....	15 " 37 "
9 ".....	19 " 52 "	16 ".....	11 " 13 "
4 ".....	23 " 40 "	Total, 54 Rooms, exclusive of Corridors, Stair Cases, &c.	

Contains 450,000 cubic feet of space, and 60,000 square feet floor surface, being in floor capacity almost 2½ times greater than the present wing of the State House, that building containing 22,000 square feet of floor.

For plans of basement and other stories, see inside.

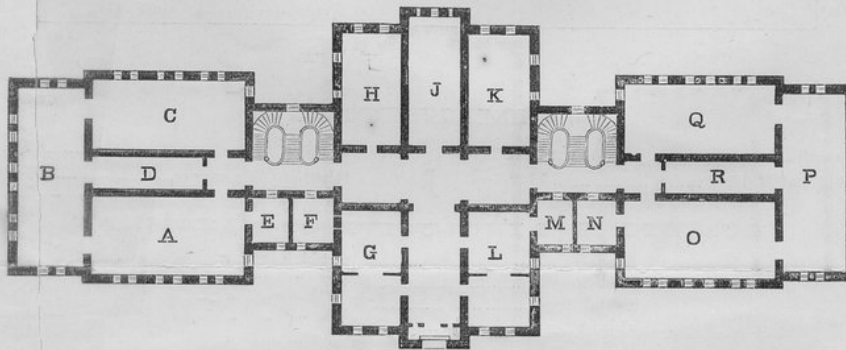
Fraser Hall  
1892

## Fraser Hall at the University of Kansas in Lawrence, Kansas



PLAN OF BASEMENT.

- |   |  |                                   |
|---|--|-----------------------------------|
| A. Chemical Lecture Room.                         | F. Private Laboratory of Professor of Chemistry. | L. Standard Weights and Measures. |
| B. Laboratory for beginners in Chemistry.         | G. Chemical Storeroom.                           | M. Blowpipe Laboratory.           |
| C. Laboratory for advanced students in Chemistry. | H. } General Storerooms.                         | N. Workshop.                      |
| D. Reagent Room.                                  | J. }   | O. Metallurgical Laboratory.      |
| E. Balance Room.                                  | K. Janitor's Room.                               | P. Tools and Materials.           |

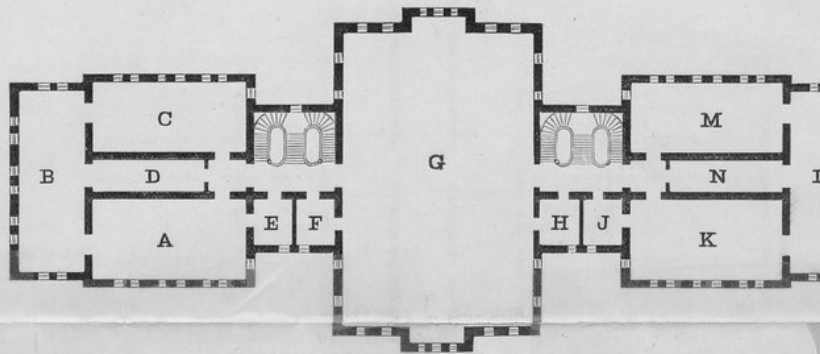


PLAN OF FIRST STORY.

- |   |   |  |
|---|---|--|
| A. Lecture Room — Physics and Mechanics.                      | G. President's Office and Faculty Room.                       | M. Study of Prof. of History, and Eng. Language and Lit. |
| B. Laboratory Room for beginners in Physics and Mechanics.    | H. Higher Mathematics and Astronomy.                          | N. Study of Prof. of Mathematics.                        |
| C. Lab'y Room for advanced students in Physics and Mechanics. | J. Ladies' Cloak Room.  | O. Mathematical Room.                                    |
| D. Apparatus Room.  | K. Mental and Moral Philosophy, Logic, and Political Economy. | P. Students' Study Room.                                 |
| E. Study of Professor of Physics.                             | L. Regents' Room and office of Treasurer.                     | Q. History, Eng. Lang. and Lit.                          |
| F. Study of Professor of Chemistry.                           |   | R. Cloak Room for male students.                         |



## Fraser Hall at the University of Kansas in Lawrence, Kansas

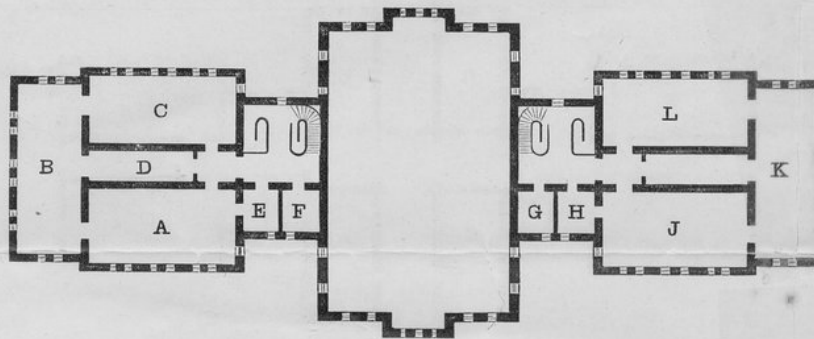


PLAN OF SECOND STORY.

- A. Lecture Room—Natural History and Geology.
- B. Botanical Laboratory.
- C. Zoological Museum and Labor'y.
- D. Botanical and Geological Cabinets.
- E. Study of Prof. of Nat'l History.
- F. Study of Prof. of Astronomy.

- G. Hall for general assemblies and examinations.

- H. Temporary Library.
- J. Study of Prof. of Drawing.
- K. Lecture Room.
- L. Pencil and Crayon Drawing.
- M. Perspective and Mechanical Drawing.
- N. Collection of Models.



PLAN OF THIRD STORY.

- A. Lecture Room—Surveying and Engineering.
- B. Topographical Room.
- C. Museum of Descriptive Geometry and Mechanics.
- D. Room for models in Engineering.
- E. Study of Prof. of Engineering.
- F. Study of Prof. Modern Languages.

- G. Study of Prof. of Latin.
- H. Study of Prof. of Greek.
- J. Recitation Room in Latin.
- K. Modern Languages.
- L. Recitation Room in Greek.