

## Kansas Avenue Bridge, Topeka, Kansas

This black and white photograph shows the Kansas Avenue Bridge looking from the north in Topeka, Kansas. The sign above the bridge reads "No person allowed to ride or drive over the bridge faster than a walk or have on more than 25 head of cattle at one time". The iron bridge was replaced in 1898 by the Melan Bridge.

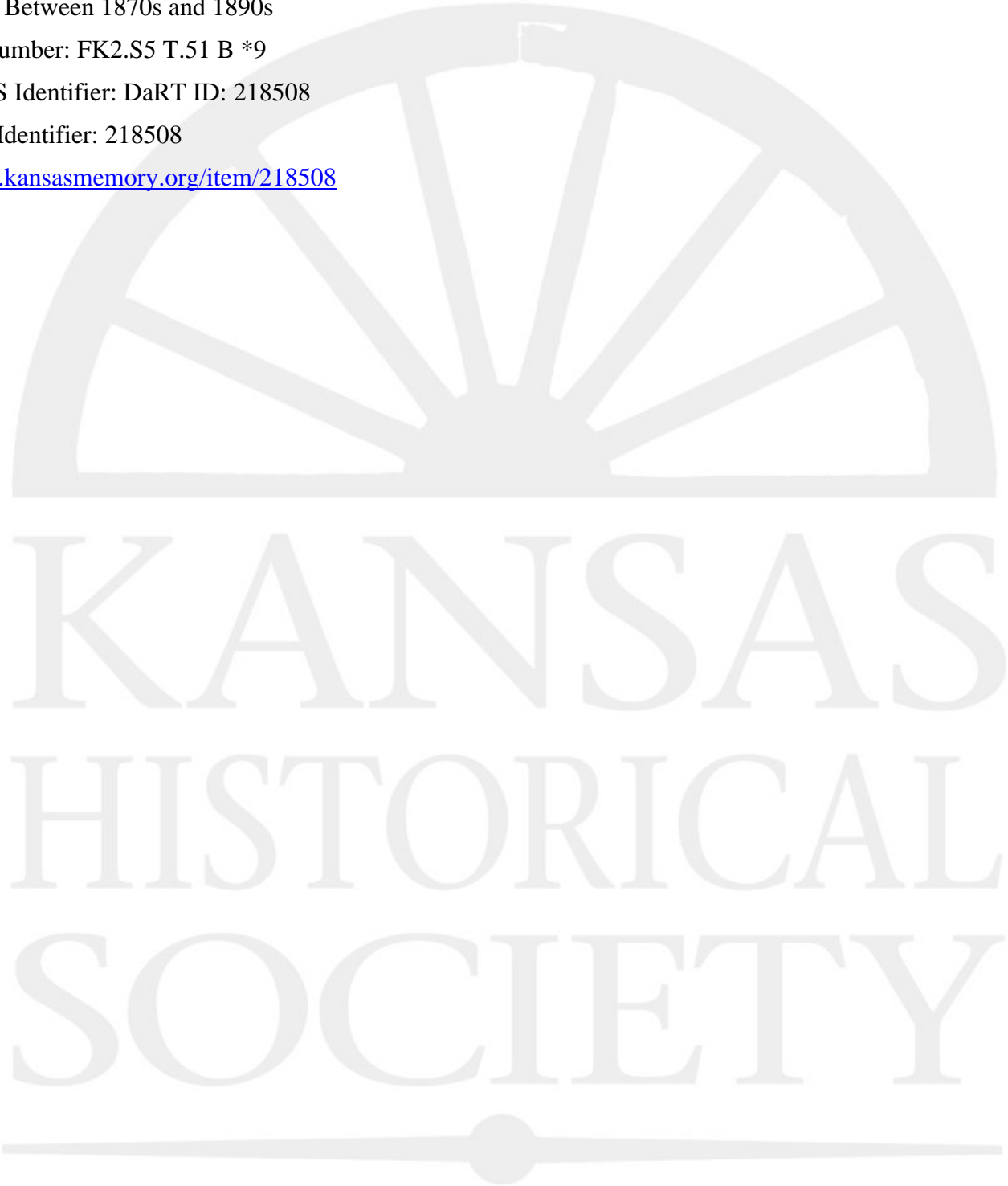
Date: Between 1870s and 1890s

Callnumber: FK2.S5 T.51 B \*9

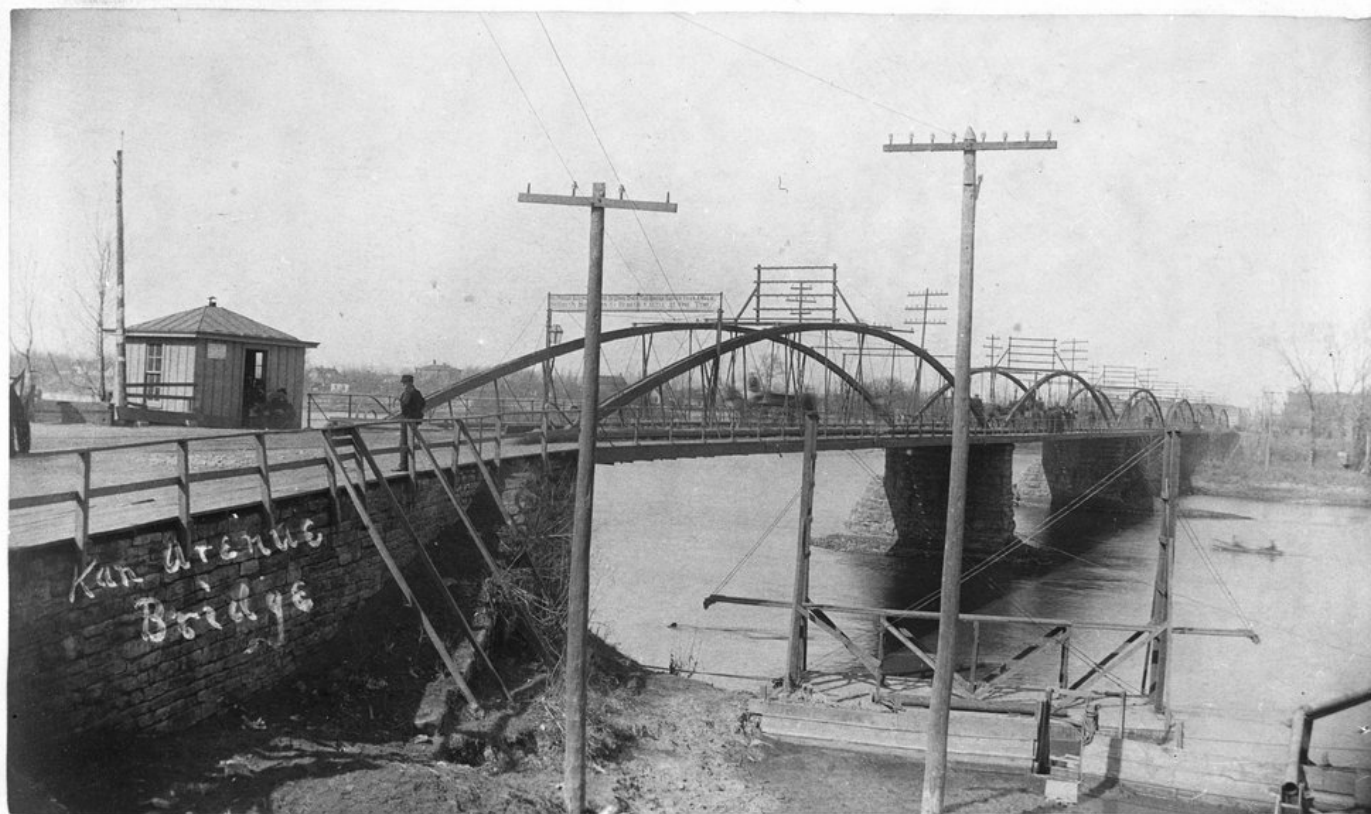
KSHS Identifier: DaRT ID: 218508

Item Identifier: 218508

[www.kansasmemory.org/item/218508](http://www.kansasmemory.org/item/218508)



## Kansas Avenue Bridge, Topeka, Kansas



*Bridge over Kansas River looking north.*