

Aerial views of Topeka and Shawnee County, Kansas

A series of aerial photographs showing construction of I-70 Interstate west of Gage Boulevard. Also, the areas east of Gage Boulevard to MacVicar Avenue, where I-70 was eventually built. Recognizable sites include: West Hills residential area; Kansas River; Topeka Water Department treatment plant; sand and concrete company; and Union Pacific Railroad tracks.

Creator: Kansas Department of Transportation

Date: November 30, 1956

Callnumber: FK2.S5 T. .1956 *4-13

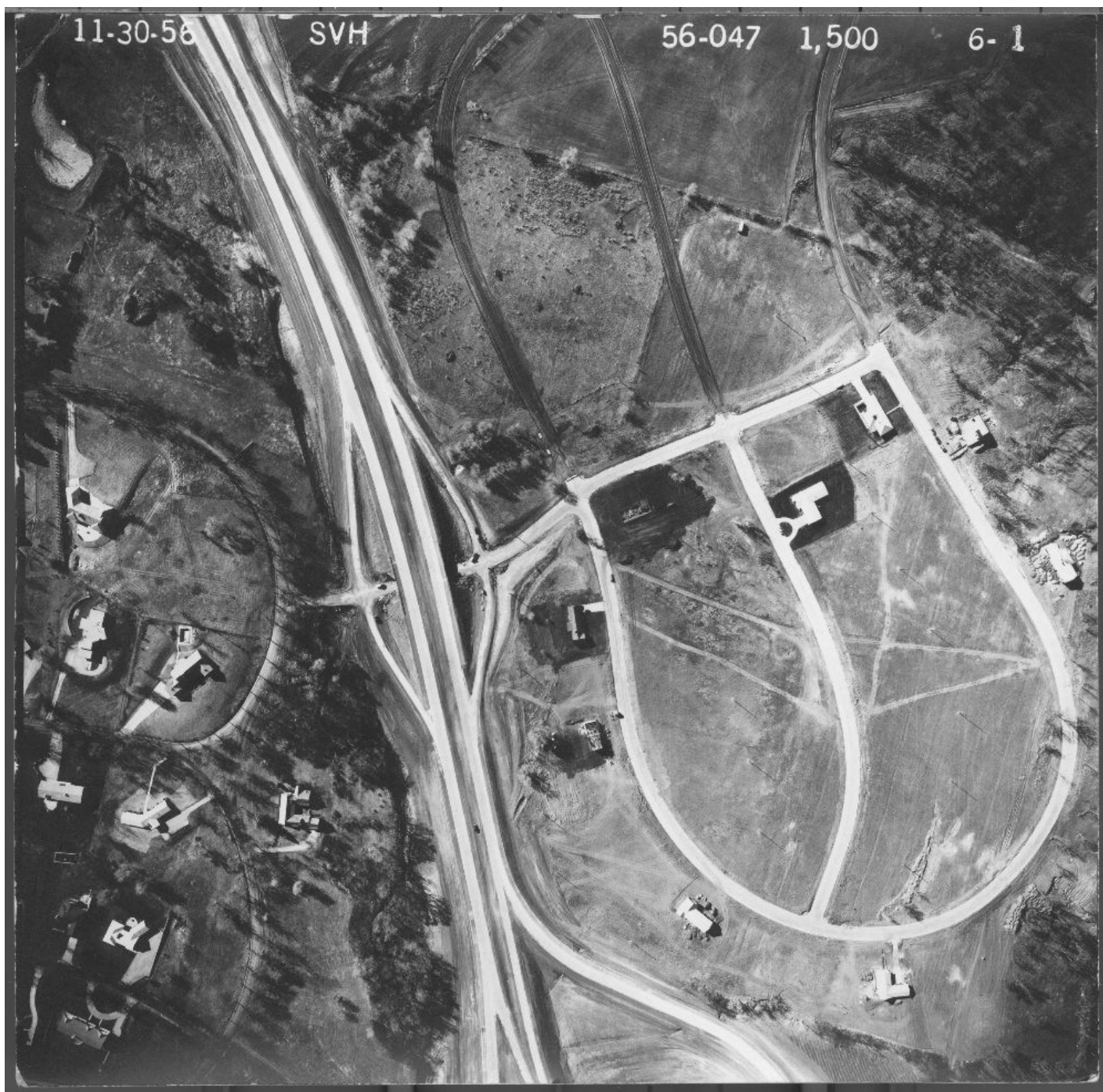
KSHS Identifier: DaRT ID: 213510

Item Identifier: 213510

www.kansasmemory.org/item/213510

KANSAS
HISTORICAL
SOCIETY

Aerial views of Topeka and Shawnee County, Kansas



Aerial views of Topeka and Shawnee County, Kansas



Aerial views of Topeka and Shawnee County, Kansas



Aerial views of Topeka and Shawnee County, Kansas



Aerial views of Topeka and Shawnee County, Kansas



Aerial views of Topeka and Shawnee County, Kansas



Aerial views of Topeka and Shawnee County, Kansas



Aerial views of Topeka and Shawnee County, Kansas



Aerial views of Topeka and Shawnee County, Kansas



Aerial views of Topeka and Shawnee County, Kansas

