

Public Welfare Service in Kansas

Section 43, Pages 1261 - 1290

This item contains 4 bulletins published by the Kansas Emergency Relief Committee (KERC) and the Civil Works Administration (CWA) in Topeka, Kansas. The bulletin numbers are #127 (1924-1933), #289 (1934), #355 (1935), and #380 (1936). The year listed by the bulletin number is the year covered; though the bulletin generally had a publication date sometime the next year. Bulletin Number 127 covers a ten year period from 1924-1933. This report has an introduction, information on the KERC; special programs of the KERC; state statistical summaries; and 105 county reports. Bulletin 289 covers state organization; accomplishments under Work Relief and CWA, special programs in the state and county in 1934; case load and expenditures; state and county statistical summaries; 105 county reports; wage rates, labor relations, and complaints; economic conditions affecting relief load; grants and loans from State and Federal Agencies other than Relief; and maps and charts. Bulletin Number 355 covers the Relief Department, Accounting and Finance Department, Engineering Department; state and county statistical summary; 105 county statistical reports; relief obligations and case load, Homestead Rehabilitation Department; economic conditions affecting relief load; relief appropriations and relief laws; the coordination of public and private welfare service; grants and loans from federal state agencies other than relief. Bulletin Number 380 covers Legislation of 1936, social service development in 1936; case load and case work service and the cost of public assistance and administration; accounting procedures for funds, equipment, materials and commodities; production and distribution projects; Boards of County Commissioners and County Social Welfare Personnel; KERC publications, KERC Audit Reports, and KERC Personnel and Pay Rolls. Also, information on the State and Social Welfare Building, Trust Deed, and the Kansas Homestead Rehabilitation Corporation, State Charter and KHRC Audit Reports. Each of the first three bulletins has an index at the end.

Creator: Kansas Emergency Relief Committee

Date: 1924-1936

Callnumber: S.P. 361 K13eb

KSHS Identifier: DaRT ID: 213284

Item Identifier: 213284

www.kansasmemory.org/item/213284



V—ANALYSIS OF WORK RELIEF PROGRAM BY PROJECT—January 1, through December 31, 1934

Sponsor	Description of Project	Wages & Salaries		Team, Truck & Equip.		Materials	Other Costs	Distribution of Costs			Total Costs
		Relief	Non-Relief	Relief	Non-Relief			Federal Funds	State Funds	Local Contributions	
Cities											
Topeka...	Repair, *Reconst.—Streets, etc.	\$ 1,471.72	\$ 256.77	\$ 178.10		\$ 680.22	\$ 92.25	\$ 2,089.22		\$ 589.84	\$ 2,679.06
Topeka...	Repair, Reconst.—Streets, etc.	240.00	52.70					240.00		52.70	292.70
Topeka...	New Const.—Pub. Bldgs., etc.	13,896.10	2,311.26	1,004.70	835.78	5,553.15	1,907.51	19,638.01		5,870.49	25,508.50
Topeka...	Repair, Reconst.—Pub. Bldgs.	296.55	56.70					353.25			353.25
Topeka...	Repair, Reconst.—Pub. Bldgs.	201.20	93.35			200.64	45	237.10		238.54	495.64
Topeka...	Repair, Reconst.—Pub. Bldgs.					51.95		51.95			51.95
Topeka...	New Const.—Sewers, etc.	823.20	147.60	59.50	44.50	603.76	46.12	882.70		841.98	1,724.68
Topeka...	Repair, Reconst.—Sewers, etc.	7,058.90	1,834.72	247.50	19.60	957.33	29.39	7,421.00		2,726.44	10,147.44
Topeka...	Repair, Reconst.—Sewers, etc.	1,251.20	134.91	129.50		2.60	71.35	1,380.70		208.86	1,589.56
Rossville...	Repair, Reconst.—Pub. Utilities	336.40						336.40			336.40
Topeka...	Repair, Reconst.—Reer. Facilities	58,721.69	196.80	924.90		5,653.30	339.83	62,538.45		3,298.07	65,836.52
Topeka...	Repair, Reconst.—Airports	13,518.10	1,914.79	1,758.05	120.15	243.69	300.03	15,536.55		2,317.96	17,854.51
Total City Projects		\$97,815.06	\$ 6,999.60	\$ 4,302.25	\$ 1,020.03	\$ 13,946.64	\$ 2,786.93	\$ 110,725.63		\$ 16,144.88	\$ 126,870.51
Schools											
High Sch., Highland Park—Repair, Reconst.—											
Pub. Bldgs.		\$ 2,004.10		\$ 68.50				\$ 2,072.60			\$ 2,072.60
Bd. Educ., Topeka—Repair, Reconst.—Pub.											
Bldgs.		41.60						41.60			41.60
Total School Projects		\$ 2,045.70		\$ 68.50				\$ 2,114.20			\$ 2,114.20
County											
Shawnee County											
Repair, Reconst.—Roads, etc.		\$104,712.80	\$14,408.12	\$ 5,638.10	\$12,963.71	\$ 3,650.77	\$ 96.14	\$ 110,527.90		\$ 30,941.74	\$ 141,469.64
New Const.—Pub. Bldgs., etc.		1,258.40		39.10				1,297.50			1,297.50
Repair, Reconst.—Pub. Bldgs., etc.		1,330.45	335.17			71.28	7.50	1,330.45		213.95	1,544.40
Repair, Reconst.—Pub. Bldgs., etc.		1,830.89	472.90		340.20	677.89	73.60	2,175.34		1,220.14	3,395.48
Repair, Reconst.—Pub. Bldgs., etc.		5,848.79	90.00			840.37	150.97	6,345.03		585.10	6,930.13
Repair, Reconst.—Bridges, etc.		9,629.60	4,274.96		2,168.56	32,631.69	28.27	35,781.21		12,951.87	48,733.08
New Const.—Pub. Utilities, etc.		3,301.60						3,301.60			3,301.60
Repair, Reconst.—Waterways, etc.		30,874.00	1,968.47	2,301.60	1,108.42	803.26	3.00	33,175.60		3,913.15	37,088.75
Fairgrounds		32,842.93	3,885.37	726.95	743.56	13,390.34	2,397.55	42,243.86		11,742.84	53,986.70
Wells (Emergency)		14,375.00	2,740.10	491.40	4,593.44	4,794.77	176.05	21,991.45		5,179.31	27,170.76
Eng. for Water Conservation Program			4,964.09		370.21	152.01		5,328.19		723.01	6,051.20
Prod. & Dis. Gds. for Needy (Clothing)		35,577.60	1,460.00		259.60		4,876.13	41,874.66		298.67	42,173.33
Prod. & Dis. Gds. for Needy (Wood Cut.)		224.80		281.00				505.80			505.80
Pub. Welfare (Other Campaigns)		5,686.05	849.70	400.00	156.00			7,091.75			7,091.75
Pub. Welfare, Garden & Farm Ponds (on relief)					5,085.00	369.46		5,454.46			5,454.46
Pub. Educ., Arts, & Res. (Cler.)		21.60	950.00					971.60			971.60
Pub. Educ., Arts, & Res. (Cler.)		348.80	1,053.00					1,401.80			1,401.80
Administrative Projects		152.21	58,650.44		7,692.09		10,104.07	42,065.95		34,532.86	76,598.81
Administrative Projects		2,132.35	307.50			75	40.17	2,439.85		40.92	2,480.77
Administrative Projects		216.20		8.00				224.20			224.20
Prod. & Dis. Gds. to Needy (Clothing)			1,092.00					1,092.00			1,092.00
Pub. Educ., Arts, & Res. (Library)		408.00						408.00			408.00
Pub. Educ., Arts, & Res. (Library)		274.20						274.20			274.20
Total County Projects		\$251,046.27	\$97,331.82	\$ 9,886.15	\$35,480.70	\$ 57,382.59	\$18,518.34	\$ 367,302.40		\$102,343.56	\$ 469,645.96
State & Federal											
State Hwy. Dept.—Repair, Reconst.—Hwy.		\$59,602.20	\$ 6,048.06	\$ 5,081.20	\$ 4,642.96	\$ 3,408.36	\$ 435.47	\$ 61,840.00	\$14,378.25		\$ 76,218.25
State, New Const.—Pub. Bldgs., etc.		5,801.60	5,372.22		599.22	6,125.77	222.68	10,173.73	7,947.76		18,121.49
State, Repair, Reconst.—Pub. Bldgs. (Boys' Ind. School)		304.00	24.00					328.00			328.00
State, Repair, Reconst.—Pub. Bldgs. (Boys' Ind. School)		681.10						681.10			681.10
State, New Const.—Bridges, etc. (Boys' Ind. School)		99.20						99.20			99.20
State, Repair, Reconst.—Waterways (Boys' Ind. School)		1,165.60				31.93		1,165.60	31.93		1,197.53
State, Airports		2,305.40	24.00	164.00	29.41	39.72	26.95	2,493.40	96.08		2,589.48
Fed. Hous. Adm., to Determine Number of Houses Needing Repair		5,844.30	2,259.90					8,104.20			8,104.20
State, Prod. & Dis. Gds. (Mattresses)		6,853.10	633.03	251.03				7,739.10			7,739.10
State, Feed., Ship. & Adm. of Cattle Pro.		2,009.60	586.52	976.65				3,572.77			3,572.77
State, Feed., Trans., & Dis. AAA Sur. Hogs		14.00		13.90				27.90			27.90
State, Laundry Service (Canning Plant)		6,231.10	309.00			132.18	76.90	6,540.10		209.08	6,749.18
State, Canning Plant		81,695.23	12,138.18	357.10				94,190.51			94,190.51
State, Pub. Educ., Arts, & Res. (Cler.)		105.60						105.60			105.60
State, Administrative Project			1,110.65					1,110.65			1,110.65
State, Adl. of Labor & Trade Complaints		24.00						24.00			24.00
State, Collect. & Class. Vital Stat.		585.40	275.00					860.40			860.40
State, School Recreational Survey		279.40						279.40			279.40
State, Division of Water Resources		546.00						546.00			546.00
State, Personnel for Local Re-employ. Offices		141.00						141.00			141.00
State, Analysis Income Tax		1,263.00	132.00					1,395.00			1,395.00
State, Data of Land Ownership		158.40						158.40			158.40
State, Pub. Educ., Arts, & Res. (Library)		565.90						565.90			565.90
State, Prod. & Dis. Gds. (First Dist.)		13.20		16.50				29.70			29.70
Total State & Federal Projects		\$173,293.33	\$28,909.53	\$ 6,860.35	\$ 5,271.50	\$ 9,737.96	\$ 762.00	\$ 202,171.66	\$22,454.02	\$ 209.08	\$ 224,834.76
Grand Total		\$524,200.36	\$133,240.95	\$21,117.25	\$41,772.41	\$ 81,067.19	\$22,067.27	\$ 682,313.89	\$22,454.02	\$118,697.52	\$ 823,465.43

*Repair Does Not Include Maintenance.



VI—DISTRIBUTION OF COMMODITIES SUPPLIED BY FSRC AND KERC FOR THE YEAR 1934

Commodities Furnished by FSRC						Commodities Purchased by KERC						Commodities Furnished by FSRC																
Unit of Measure		Amount Distributed	Max. Relief Cases in Any 1 Mo.	Actual Costs	Estimated Valuation	Total	Unit of Measure		Amount Distributed	Max. Relief Cases in Any 1 Mo.	Actual Costs	Estimated Valuation	Total	Unit of Measure		Amount Distributed	Max. Relief Cases in Any 1 Mo.	Actual Costs	Estimated Valuation	Total								
Apples..... Pounds						\$.....	\$.....	\$.....	Sausage..... Pounds						\$.....	\$.....	\$.....	Sausage..... Pounds						\$.....	\$.....	\$.....		
Beef, Fresh..... Pounds									Soup, Canned..... Cans						542	519	5,420.00	5,420.00	Soup, Canned..... Cans						542	519	5,420.00	5,420.00
Beef, Canned..... 15lb Cans						27,914	3,454	6,978.50	Comforts*.....						388	388	1,261.00	1,261.00	Comforts*.....						388	388	1,261.00	1,261.00
Blankets.....						2,100	2,100	2,100.00	Pillow Cases*.....										Pillow Cases*.....									
Butter..... Pounds						58,446	4,748	14,611.50	Sheets*.....						19	19	28.50	28.50	Sheets*.....						19	19	28.50	28.50
Cheese..... Pounds						12,892	17,800	2,511.00	Huck & Terry Towels*.....										Huck & Terry Towels*.....									
Flour..... 24lb Sacks						5,967	5,578	5,967.00	Straw Ticks*.....						9	9	30.60	30.60	Straw Ticks*.....						9	9	30.60	30.60
Grain & Feed..... Bushels						54,280	5,083	4,883.40	Old Garments**.....						13,709	436	9,191.32	9,191.32	Old Garments**.....						13,709	436	9,191.32	9,191.32
Lard..... Pounds						19,892	2,961	1,989.20	Total.....								\$ 59,817.57	\$ 59,817.57	Total.....								\$ 59,817.57	\$ 59,817.57
Milkweed-O..... Pounds						51,670	2,612	4,133.60	Total Commodities.....								\$ 125,777.63	\$ 125,777.63	Total Commodities.....								\$ 125,777.63	\$ 125,777.63
Pork, Salt..... Pounds						124,030	5,026	21,088.50	Fuel Distribution—FSRC										Fuel Distribution—FSRC									
Pork, Smoked..... Pounds						7,966	3,125	477.96	Coal..... Tons						586.08		\$ 2,848.93	\$ 2,848.93	Coal..... Tons						586.08		\$ 2,848.93	\$ 2,848.93
Rice..... Pounds									Fuel Distribution—KERC										Fuel Distribution—KERC									
Sugar..... Pounds						12,194	1,200	1,219.40	Coal..... Tons						1,150.72	7,468.03	7,468.03		Coal..... Tons						1,150.72	7,468.03	7,468.03	
Tongue, Frozen..... Pounds									Gas..... Cubic Feet						208,400	158.65	158.65		Gas..... Cubic Feet						208,400	158.65	158.65	
Total.....								\$ 65,960.06	Distribution Costs of FSRC								1,025.66	1,025.66	Distribution Costs of FSRC								1,025.66	1,025.66
Commodities Purchased by KERC									Coal Paid by KERC								\$ 8,652.34	\$ 2,848.93	Coal Paid by KERC								\$ 8,652.34	\$ 2,848.93
Beef, Fresh..... Pounds						149,207	3,981	\$ 22,381.05	Total.....								\$ 8,652.34	\$ 12,848.93	Total.....								\$ 8,652.34	\$ 12,848.93
Beef, Canned..... 15lb Cans						89,683	4,904	17,936.60	Grand Total.....								\$ 8,652.34	\$ 12,848.93	Grand Total.....								\$ 8,652.34	\$ 12,848.93
Cod Liver Oil..... 12 oz. Bottles						144	144	72.00																				
Eggs..... Dozens						23,310	23,310	3,496.50																				
Flour..... 24lb Sacks																												
Grain & Feed..... Bushels																												
Pork, Smoked..... Pounds																												

* Raw Materials Furnished by FSRC. Finished Products Accomplished under Work Projects.
**Materials Furnished for Work Projects from County and Private Funds.

* Raw Materials Furnished by FSRC. Finished Products Accomplished under Work Projects.
** Materials Furnished for Work Projects from County and Private Funds.

VII—ANALYSIS OF COUNTY ADMINISTRATIVE COSTS—1934

Administrative Projects	Non-Relief Payrolls		Relief Payrolls		Equipment Rental	Materials	Other Costs	Total Costs
	Aver. Monthly No. Employed	Earnings	Aver. Monthly No. Employed	Earnings				
County Funds.....	29.5	\$ 16,736.70		\$ 2,508.76	\$ 7,692.09	\$ 75	\$ 10,144.24	\$ 34,573.78
Federal Funds.....	69.7	42,221.24	6.4	2,508.76				44,730.00
Additional Administration—County Funds*	19.0	4,758.82					1,885.51	6,644.33
Supplemental Salaries.....		4,560.00						4,560.00
City Funds.....								
Private Funds.....								
Total Costs.....		\$ 68,276.76		\$ 2,508.76	\$ 7,692.09	\$ 75	\$ 12,029.75	\$ 90,508.11

* Additional Administration January through March 31.

IX—CIVIL WORKS ADMINISTRATION—EMPLOYMENT, MAN HOURS, AND WAGES FOR THE ENTIRE PERIOD, NOVEMBER 17, 1933, THROUGH JUNE 30, 1934

Shawnee County	Employment Data Covering Work Projects and Tool and Sundry Equipment Projects						Employment Data Covering Administrative Projects		Summary				Grand Total		
	All Payrolls Covering Projects Employing Principally Labor		All Payrolls Covering Drivers of Their Own Teams, Trucks and Other Mechanical Equipment		Payrolls on Project Employing Chiefly Professional and Clerical Wks.		Payrolls for E'p'les of State & Local Administrative Proj.		Total Number Employees		Total Earnings, Wages, Salaries, and Hire				
	Average Weekly No. of Employees	Total Man Hours Worked	Average Weekly No. of Employees	Total Worked	Average Weekly No. of Employees	Salaries and Wages Earned	Average Weekly No. of Employees	Salaries and Wages Earned	Weekly Average	Total	Average Weekly Wage	Accident Compensation			
Total 1933.....	2,641.3	406,395	\$183,816.69	3.3	520	\$ 509.48	36.2	\$ 3,202.23	57.7	\$ 4,241.12	2,738.5	\$191,769.52	\$11.67
Total—First 3 Mo. 1934.....	2,532.5	818,071	358,034.63	65.0	20,215	20,001.10	299.7	75,249.79	65.1	14,437.12	2,962.3	\$ 467,722.64	12.15	7.3	595.13
Total—Second 3 Mo. 1934.....	64.5	10,062	5,346.45	2.0	308	288.00	13.2	2,024.87	4.2	637.35	83.9	\$ 8,296.67	7.60	2.0	141.85
Total.....	1,550.3	1,234,528	\$547,197.77	27.8	21,043	\$20,798.58	133.9	\$80,476.89	38.9	\$19,315.59	1,751.9	\$667,788.83	\$11.92	3.8	\$736.98

SHAWNEE COUNTY

635



VIII—ANALYSIS OF CIVIL WORKS ADMINISTRATION PROJECTS FOR THE ENTIRE PERIOD, NOVEMBER 17, 1933, THROUGH JUNE 30, 1934

		FEDERAL FUNDS				SPONSORS' CONTRIBUTIONS				DISTRIBUTION OF COSTS		
Sponsor	Description of Project	CWA Payrolls		Purchase Orders		Wages	Team-Truck Equip. Exp.	Materials	Other Costs	Federal Funds	Local Funds	Gr'd Total Expenditures
Cities												
City of Topeka	Street Improvement	\$ 61,408.80	\$	\$	\$ 162.43	\$ 62.50	\$	\$	\$ 36.27	\$ 61,571.23	\$ 98.77	\$ 61,670.00
City of Topeka	Street Improvement	144.00	100.30							244.30		244.30
City of Topeka	Library Improvement	10.35				278.10				288.45		288.45
City of Topeka	Park Improvement	117,641.95	5,620.38			6,519.09	112.24	9,247.10	1,223.11	129,781.42	10,582.45	140,363.87
City of Topeka	Courthouse Improvement	32.00				3,547.92				3,547.92	32.00	3,579.92
City of Topeka	County Garage & Shop	12,675.50	75.60			12,917.49	658.13	335.24	38.03	25,668.59	1,034.07	26,702.66
City of Topeka	Fairground Improvement	525.15				8,268.48	3,306.64	918.40	1,845.20	525.15	1,845.20	2,370.35
City of Topeka	Public Utility Improvement	15,919.50	43.20			1,055.25	696.00		8,748.34	24,231.18	15,340.20	39,571.38
City of Topeka	Sewer Improvement	17,444.88	2,805.80			1,055.25		696.00	303.72	5,047.40	20,250.68	7,102.37
City of Topeka	Flood Control											27,353.05
Total City Projects		\$225,802.13	\$ 8,645.28	\$	\$	\$31,693.51	\$ 5,194.76	\$ 1,949.64	\$20,182.39	\$266,140.92	\$ 36,003.06	\$302,143.98
Townships												
Township	Road Improvement	\$ 8,027.90	\$	\$	\$	\$ 474.85	\$ 546.55	\$ 271.66	\$ 246.33	\$ 8,027.90	\$ 1,539.39	\$ 9,567.29
Monmouth Township	Road Improvement	6,843.60				515.77	1,102.23	11.60	279.49	6,843.60	1,919.09	8,762.69
Grove Township	Road Improvement	7,422.00				198.00	299.85	318.53	51.07	7,422.00	867.45	8,289.45
Williamport Twp.	Road Improvement	2,045.60				556.20	406.71	136.00	99.66	2,045.60	1,198.27	3,243.87
Total Township Projects		\$ 24,342.10	\$	\$	\$	\$ 1,754.82	\$ 2,355.34	\$ 737.79	\$ 676.55	\$ 24,342.10	\$ 5,524.50	\$ 29,866.60
County												
Shawnee County	Roads	\$157,438.10	\$ 3,519.95	\$	\$	\$ 7,808.86	\$10,914.09	\$ 1,018.22	\$ 4,085.13	\$160,958.05	\$ 23,826.30	\$184,784.35
Shawnee County	Bridge	24,965.40				4,067.43	2,656.64	9,574.14	125.00	24,965.40	16,423.21	41,388.61
Shawnee County	Local CWA Office	9,439.52				893.20	847.77		2,570.30	9,439.52	4,311.27	13,750.79
Shawnee County	Poor Relief	16,840.98				300.00			450.80	16,840.98	750.80	17,591.78
Shawnee County	Re-employment Office	11,506.25							119.05	11,506.25	119.05	11,625.30
Shawnee County	Poor Farm Improvement	112.00								112.00		112.00
Total County Projects		\$220,102.25	\$ 3,519.95	\$	\$	\$13,069.49	\$14,418.50	\$10,592.36	\$ 7,350.28	\$225,622.20	\$ 25,430.63	\$251,052.83
State & Federal												
Federal	Constructing Airport Building	\$ 847.60	\$ 50.40	\$	\$ 2,800.30	\$	\$	\$ 429.01	\$ 75.50	\$ 3,698.30	\$ 504.51	\$ 4,202.81
State	Roads	76,198.30	6,420.75		11,480.94		5,965.90	8,899.68	9,630.98	94,099.99	24,496.56	118,596.55
State	Landscaping Highway	1,053.91	241.20		1,742.85					3,037.96		3,037.96
State	Traffic Survey Work	3,205.60								3,205.60		3,205.60
State	Compensation	736.98								736.98		736.98
State	Sign Boards	339.80			242.36					582.16		582.16
State	Community Sanitation	1,888.55	100.80						2,503.64	1,989.35	2,503.64	4,492.99
State	Vets. Placement Representative	170.60								170.60		170.60
State	School Finance Survey			86.23	64.68					150.91		150.91
State	Org. Books, etc., Ks. Hist. Soc.	2,411.00							73.20	2,411.00	73.20	2,484.20
State	Paint for Industrial Sch. Bldgs.	386.70			581.27					967.97		967.97
State	Imp.—Bldgs. Industrial School	291.40								291.40		291.40
State	Relocating Bridge, Boys' Ind. Sch.	225.20			390.61					615.81		615.81
State	Repair Fences, Boys' Ind. School	97.60								97.60		97.60
State	Transient Center	142.00								142.00		142.00
State	Work, Transient Building	353.40								353.40		353.40
Federal	Geological Survey	1,249.55								1,249.55		1,249.55
Federal	Meteorological Data	1,844.46			75.58	32.06				1,952.10		1,952.10
Federal	Survey of Price Farmers Pay	980.40			159.80	22.68				1,162.88		1,162.88
Federal	Real Property Inventory	6,390.21								6,390.21		6,390.21
Federal	Survey of Unemployed Workers	462.55								462.55		462.55
Federal	National Relief Census	243.20								243.20		243.20
Federal	History of Railroad Employees	50,480.75			143.87					50,624.62		50,624.62
Federal	Survey of Work for Deaf & Dumb	134.40								134.40		134.40
Federal	Community Sanitation	4,350.89							345.96	4,696.85		4,696.85
Federal	Airport	18,206.15	1,823.20	250.00	9,278.64		132.75	10.32	1,232.84	29,557.99	1,395.91	30,953.90
Federal	Transient Center	763.27			14,984.00					15,747.27		15,747.27
Federal	Transient Center	416.25			115.12					531.37		531.37
Federal	Transient Center	44.00								159.12		159.12
Federal	Census of American Business	381.60								381.60		381.60
Federal	Survey of Farm Housing	2,466.73			15.58					2,482.31		2,482.31
Federal	Farm Mortgages & Land Values	714.70								714.70		714.70
Total State & Federal Projects		\$177,477.75	\$ 8,636.35	\$ 571.61	\$41,895.02	\$	\$ 6,098.65	\$ 9,339.01	\$13,972.12	\$228,580.73	\$ 29,409.78	\$257,990.51
Grand Total		\$397,724.23	\$21,891.58	\$ 571.61	\$73,588.53	\$20,019.67	\$24,822.13	\$40,851.55	\$30,675.22	\$742,645.95	\$116,367.97	\$859,013.92

*\$14,984.06—FERA Included in This Total.



SHERIDAN COUNTY

687

Board of County Commissioners—George Standley, Chairman, Hoxie; R. D. Kineaid, Jennings; John Yelek, Rexford.
County Emergency Relief Committee—E. A. Monteith, Chairman, Hoxie; George Schuricht, Hoxie; R. D. Kineaid, Jennings; John Yelek, Rexford.
County Poor Commissioner—Frank Schropp; County Case Supervisor—Mrs. Ruth G. Monteith; Supervisor of Work Program—Henry R. Byers (December, 1934).
Assessed Valuation—\$8,558,894 (March 1, 1934); Bonded Indebtedness—None (October 1, 1934); Population—6,283 (March, 1934); Total Population on Relief—1,770; Per Cent—28.2 (December, 1934).

WORK RELIEF AND CWA, OCTOBER, 1932, THROUGH DECEMBER, 1934

Water conservation projects and road improvement such as grading, gravel surfacing, and construction of culverts and bridges were important accomplishments of the CWA and work relief programs (October, 1932, through December, 1934) in Sheridan county, according to reports from local relief officials.

The water conservation program was initiated during the summer of 1934 in order to relieve conditions caused by drought and water shortage. By the end of the year 40 farm ponds and two garden ponds either had been completed or were under construction. Work on the road system was started in October, 1932, and by the close of 1934 nearly 104 miles of county and township roads had been worked, of which 84½ miles had been surfaced, and two miles of state highway graded. Seventeen small culverts and six bridges and large culverts were built in connection with these improvements. Under the CWA two large fills were made across ravines in order to straighten the road which formerly skirted the deep ravines. This work was done by teams and frescoes. Under the work relief program two road ponds were constructed west of Lucerne, the road grade being used for the dams. Street improvements were made in Hoxie and Selden.

General repair work was done on a water plant and 500 feet of sanitary sewer were laid at Hoxie. Outdoor improvements consisted of work on a 4-acre park at Hoxie and the cemeteries at both Hoxie and Selden.

Until the middle of the year the relief load was light, according to the local relief administration, but owing to the continued drought which was responsible for two—and in many instances three—years of crop failures, there was a heavy increase in the latter part of 1934. County relief officials believed that if there had been rain even at a late date many farmers would not have needed help. There was almost no employment in the county outside the work relief projects with the exception of a few contract construction jobs. The sewing room at Hoxie was considered by the county to be an important development of public welfare service in that it provided work for women relief clients. During 1934 the workers produced 1,178 garments.

EXPENDITURES FOR RELIEF AND CWA FROM ALL SOURCES, 1934*			
	Relief Program	CWA Program	Total
Total County Funds	\$ 9,035.52	\$	\$ 9,035.52
Total Township Funds			
Total City Funds	24.00		24.00
Total School Funds			
Total Privately Raised Funds			
Total State Funds	202.35		202.35
Total Federal Funds	55,212.98	23,337.43	78,550.41
Total	\$ 64,474.85	\$ 23,337.43	\$ 87,812.28

EXPENDITURES FOR RELIEF AND CWA FROM ALL SOURCES, 1924-1933*			
Total County Funds	\$ 55,118.27	\$	\$ 55,118.27
Total Private Funds	21.44		21.44
Total City Funds	224.63		224.63
Total Federal Funds	6,495.71	12,049.20	18,544.91
Total	\$ 61,860.05	\$ 12,049.20	\$ 73,909.25

*Excludes All Non-relief Obligations Except Payrolls.

I—ANALYSIS OF ALL RELIEF GRANTED FROM FEDERAL, LOCAL PUBLIC, AND PRIVATE WELFARE AGENCY FUNDS—1934

ITEMS	RESIDENT FAMILIES			RESIDENT SINGLES			RESIDENT TOTAL			TRANSIENTS		GRAND TOTAL
	Aver. Mo. No. Cases	Aver. Mo. No. Persons Rept.	Amount	Aver. Mo. No. Cases	Amount	Aver. Mo. Relief Per Case	Aver. Mo. No. Cases	Amount	Aver. Mo. Relief Per Case	Actual No. Persons	Amount	All Relief Granted
Section A—Work and Direct Relief												
Approved Work Projects												
Federal Funds	142.4	725.9	\$ 39,029.90	2.0	\$ 414.60	\$ 17.28	144.4	\$ 39,444.50	\$ 22.76			\$ 39,444.50
County Funds												
Total	142.4	725.9	\$ 39,029.90	2.0	\$ 414.60	\$ 17.28	144.4	\$ 39,444.50	\$ 22.76			\$ 39,444.50
Additional County Projects												
Total Work Relief	142.4	725.9	\$ 39,029.90	2.0	\$ 414.60	\$ 17.28	144.4	\$ 39,444.50	\$ 22.76			\$ 39,444.50
Direct Relief												
County Funds	23.0	121.7	\$ 2,674.18	6.2	\$ 1,031.22	\$ 13.94	29.2	\$ 3,705.40	\$ 10.59	65	\$ 19.40	\$ 3,724.80
Federal Funds												
Garden Seed*			25.00					25.00				25.00
Fuel Distribution†			188.75					188.75				188.75
Total	23.0	121.7	\$ 2,887.93	6.2	\$ 1,031.22	\$	29.2	\$ 3,919.15	\$	65	\$ 19.40	\$ 3,938.55
Total Work & Direct Relief	165.4	847.6	\$ 41,917.83	8.2	\$ 1,445.82	\$	173.6	\$ 43,363.65	\$	65	\$ 19.40	\$ 43,383.05
Less Duplicated Cases	8.5	52.2						8.5				
Net Total, Section A	156.9	795.4	\$ 41,917.83	8.2	\$ 1,445.82	\$	165.1	\$ 43,363.65	\$	65	\$ 19.40	\$ 43,383.05
Section B—Special Programs												
Federal Grants in Aid												
Emergency Educ. Pro.†												
College Student Pro.†												
Homestead Rehabilitation†	30.4	148.2	\$ 5,961.20	39.22			30.4	\$ 5,961.20	\$ 39.22			\$ 5,961.20
Civil Works Service†												
Total Section B	30.4	148.2	\$ 5,961.20				30.4	\$ 5,961.20				\$ 5,961.20
Section C—Other Relief from County Funds												
Poor Farm												
Hospitalization	1.6	7.3	713.38	37.55			1.6	713.38	37.55			713.38
Other Institutions	0.7	3.5	214.70	26.84			0.7	214.70	26.84			214.70
Pensions	1.0	1.0	120.00	10.00			1.0	120.00	10.00			120.00
Mothers' Aid	2.2	6.8	270.00	10.00			2.2	270.00	10.00			270.00
Crippled Children	0.5	2.6	324.19	54.03			0.5	324.19	54.03			324.19
All Other (Burials, etc.)	0.3	1.3	215.00	53.75			0.3	215.00	53.75			215.00
Total Section C	6.3	22.5	\$ 1,857.27	\$ 24.58			6.3	\$ 1,857.27	\$ 24.58			\$ 1,857.27
Section D—Relief from Private Agencies												
Red Cross												
Religious Organizations												
Fraternal Clubs												
Community Chest												
Associated Charities												
Welfare Boards												
Salvation Army												
Parent-Teachers Assn.												
Other Agencies												
Total Section D												
Section E—Relief from City Funds												
Total Sections A to E, Incl.	193.6	966.1	\$ 49,736.30	8.2	\$ 1,445.82	\$	201.8	\$ 51,182.12	\$	65	\$ 19.40	\$ 51,201.52
Section F—Surp. Commodities—Est. Val.												
Commodities Granted by†												
Fed. Surplus Relief Corp.			\$ 1,677.64					\$ 1,677.64				\$ 1,677.64
Kansas Emer. Relief Com.			1,600.71					1,600.71				1,600.71
Fuel Granted by†												
Fed. Surplus Relief Corp.			252.29					252.29				252.29
Total Section F			\$ 3,530.64					\$ 3,530.64				\$ 3,530.64
Grand Total All Relief			\$ 53,266.94			\$ 1,445.82		\$ 54,712.76			\$ 19.40	\$ 54,732.16

*Cases Included in Schedule III. †Cases Included in Schedule VI. ‡Case Averages Based on Actual Number of Months Program Was in Operation.



638

SHERIDAN COUNTY

II—SUMMARY OF ALL OBLIGATIONS INCURRED FOR RELIEF AND THE WORK RELIEF PROGRAM FOR YEAR 1934 AND CIVIL WORKS ADMINISTRATION FROM NOVEMBER 17, 1933, THROUGH JUNE 30, 1934

Consolidated Statement of All Obligations for These Purposes Against Federal, State, Local Public, Private and Private Welfare Agency Funds

ITEMS	Federal Funds	County Funds	City Funds	Township Funds	School Funds	Private Funds	Total Funds	State Funds	Private Agy. Funds	Grand Total All Funds
Section A										
Work Relief—Wages on Approved Projects.	\$ 39,444.50	\$	\$	\$	\$	\$	\$ 39,444.50	\$	\$	\$ 39,444.50
Section B										
Non-Relief Obligations—Work Relief Pro.										
Materials										
Aggregate Materials & Stone	\$	\$ 540.21	\$ 31.87	\$	\$	\$	\$ 572.08	\$	\$	\$ 572.08
Cement			39.30				39.30			39.30
Bituminous Materials										
Petroleum Products		261.88					261.88			261.88
Iron & Steel	1,026.04	101.91	15.00				1,142.95			1,142.95
Clay Products			184.15				184.15			184.15
Lumber	1,941.98	1,827.19	5.50				3,774.67			3,774.67
Plumbing & Heating	22.54						22.54			22.54
Hardware	85.78	283.69					369.47			369.47
Explosives	108.55	10.11					118.66			118.66
Paint & Paint Materials		1.35					1.35			1.35
Total Materials	\$ 3,184.80	\$ 3,026.34	\$ 275.82	\$	\$	\$	\$ 6,487.05	\$	\$	\$ 6,487.05
Team, Truck, & Equipment Expense										
Equipment Parts & Supplies	\$ 10.60	\$ 129.53	\$	\$	\$	\$	\$ 140.13	\$	\$	\$ 140.13
Office Supplies & Equipment		151.21					151.21			151.21
Rental of Equipment	84.58	532.02	3.90				620.50	10.65		631.15
Total Team, Truck, & Equip. Exp.	\$ 95.18	\$ 812.76	\$ 3.90	\$	\$	\$	\$ 911.84	\$ 10.65	\$	\$ 922.49
Other Costs										
Tools	\$	\$	\$	\$	\$	\$	\$	\$	\$	\$
Rental of Premises										
Other Services	438.25	738.00					1,176.25			1,176.25
Other Charges										
Miscellaneous	630.00	1,069.54					1,699.54	11.36		1,710.90
Total Other Costs	\$ 1,068.25	\$ 1,807.54	\$	\$	\$	\$	\$ 2,875.79	\$ 11.36	\$	\$ 2,887.15
Wages & Salaries	\$ 6,062.89	\$ 3,063.45	\$ 24.00	\$	\$	\$	\$ 9,180.34	\$ 202.35	\$	\$ 9,382.69
Total Non-Relief Obligations	\$ 10,411.21	\$ 8,740.09	\$ 303.72	\$	\$	\$	\$ 19,455.02	\$ 224.36	\$	\$ 19,679.38
Total Sections A & B	\$ 49,855.71	\$ 8,740.09	\$ 303.72	\$	\$	\$	\$ 58,899.52	\$ 224.36	\$	\$ 59,123.88
Section C										
Additional County Work Relief										
Direct Relief	\$ 213.75	\$ 3,724.80	\$	\$	\$	\$	\$ 3,938.55	\$	\$	\$ 3,938.55
Admin. Costs Prior to Admin. Projects										
Wages & Salaries		360.00					360.00			360.00
Other Costs		148.23					148.23			148.23
Total	\$	\$ 508.23	\$	\$	\$	\$	\$ 508.23	\$	\$	\$ 508.23
Total Section C	\$ 213.75	\$ 4,233.03	\$	\$	\$	\$	\$ 4,446.78	\$	\$	\$ 4,446.78
Section D										
Relief from Special Programs										
Other Relief from County Funds	\$ 5,961.20	\$	\$	\$	\$	\$	\$ 5,961.20	\$	\$	\$ 5,961.20
Other Relief from City Funds		1,857.27					1,857.27			1,857.27
Relief from Private Welfare Agency Funds										
Surplus Commodities & Fuel—Est. Value	3,530.64						3,530.64			3,530.64
Supplemental Administrative Salaries										
Total Section D	\$ 9,491.84	\$ 1,857.27	\$	\$	\$	\$	\$ 11,349.11	\$	\$	\$ 11,349.11
Grand Total Sections A to D, Incl.	\$ 59,561.30	\$ 14,830.39	\$ 303.72	\$	\$	\$	\$ 74,695.41	\$ 224.36	\$	\$ 74,919.77
Section E										
Civil Works Administration										
Work Projects										
Payrolls	\$ 33,348.91	\$	\$	\$	\$	\$	\$ 33,348.91	\$	\$	\$ 33,348.91
Other Costs	1,468.95	3,235.88	629.90				5,334.73	2,087.79		7,422.52
Total	\$ 34,817.86	\$ 3,235.88	\$ 629.90	\$	\$	\$	\$ 38,683.64	\$ 2,087.79	\$	\$ 40,771.43
Administration										
Payrolls	\$ 2,037.72	\$	\$	\$	\$	\$	\$ 2,037.72	\$	\$	\$ 2,037.72
Other Costs		187.56					187.56			187.56
Total	\$ 2,037.72	\$ 187.56	\$	\$	\$	\$	\$ 2,225.28	\$	\$	\$ 2,225.28
Total Civil Works Administration	\$ 36,855.58	\$ 3,423.44	\$ 629.90	\$	\$	\$	\$ 40,908.92	\$ 2,087.79	\$	\$ 42,996.71
Grand Total	\$ 96,416.88	\$ 18,253.83	\$ 933.62	\$	\$	\$	\$ 115,604.33	\$ 2,312.15	\$	\$ 117,916.48

III—MONTHLY RECORD OF RESIDENT CASES SHOWING APPLICATIONS RECEIVED, CASES OPENED, ACTIVE AND INACTIVE CASES, AND CASES CLOSED FOR YEAR 1934

	Cases at Beginning of Mo.	Applications Rec'd	Total Cases Opened	New Cases Opened	Old Cases Re-Opened	Total Mo. Case Load	Cases Rec'd Relief	*Cases Homest'd Rehab. Project	Cases Received No Relief	Total Cases Closed	Cases Closed Because Employ't	Cases Closed Other Reasons	Cases Open End of Mo.	Cases Active End of Month	Cases Inactive End of Month
January	30	22	22	17	5	42	42	6	4	2	36	36	...
February	36	6	6	...	6	42	37	...	5	5	2	3	37	37	...
March	37	9	9	1	8	46	41	...	5	5	2	3	41	41	...
April	41	64	64	15	49	105	76	...	29	29	16	13	76	76	...
May	76	29	25	5	20	101	90	...	11	11	4	7	90	90	...
June	90	41	35	12	23	125	118	...	7	7	...	7	118	118	...
July	118	174	44	44	...	162	136	...	6	6	136	136	...
August	156	275	118	111	7	274	266	11	8	8	1	7	266	266	...
September	266	224	73	67	6	339	310	20	29	29	16	13	310	310	...
October	310	173	24	21	3	334	296	21	38	38	...	38	296	296	...
November	296	364	243	50	193	539	345	49	194	31	18	13	508	345	163
December	508	22	21	21	...	529	347	51	182	16	14	2	513	347	166

*Included in Cases Receiving Relief.

SHERIDAN COUNTY

PARK DRIVES AND FLOWER BEDS

Hoxie City Park was one of approximately 225 parks renovated or repaired in the state under the CWA and county work relief programs. The project for improvement of this park was the first to be submitted for KERC approval in Sheridan county. The adjacent photograph shows numerous drives and a flower bed which were built as a part of the park landscaping program. Drives were surfaced with crushed stone and gravel, and the flower bed was decorated with native stone. A flag pole, placed in the middle of the flower bed, also was included in the park improvement and landscaping program.



CITY PARK-HOXIE--87-B12-1

DESK IN RELIEF OFFICE

This desk was provided for the Sheridan county relief offices by work relief laborers on a furniture making project. The desk is now a part of the equipment in the county engineer's office. Most furniture was made by inexperienced workers under skilled supervision. Workmen on relief rolls who had had previous experience were frequently allowed to work out their budgets as supervisors.



DESK MADE BY RELIEF LABOR-HOXIE--87-B4-23



RELIEF OFFICE-COURTHOUSE-HOXIE--87-B4-23

RELIEF PERSONNEL AT WORK

This interior view of the poor commissioner's office at Hoxie shows members of the county relief administration carrying on their regular duties. This office underwent complete remodeling and repair under a county work relief project. Relief clients made the furniture, painted the walls and ceilings, and resurfaced the floors. The relief administration offices in this county were located in the county courthouse building.

ANOTHER VIEW OF HOXIE PARK

A picnic table and oven are shown in this view (left) of Hoxie City Park. The table and surrounding benches were constructed of reinforced concrete. Openings were left at each corner of the table to make the table easily accessible to picnickers. The masonry oven (background) was constructed of native stone. One of the many drives in the park separates the picnic table and the oven. The automobile, in the accompanying view, is parked along the gravel road. This park has an area of about four acres.



CITY PARK-HOXIE--87-B12-1



IV—ANALYSIS OF PAYMENTS IN CASH OR IN KIND FOR ALL RELIEF GRANTED FROM FEDERAL, LOCAL PUBLIC, AND PRIVATE WELFARE AGENCY FUNDS—1934

Source of Funds	ANALYSIS OF PAYMENTS IN KIND										
	Total Relief Extended	Payments In Cash	Payments For Which Type Not Defined	Payments In Kind	Food and Household Necessities	Shelter	Clothing	Fuel	Public Utilities	Medical Care	Institutional Care
January—Federal.....	\$ 460.79	\$ 50.00	\$	\$ 410.79	\$ 310.39	\$ 17.50	\$ 11.50	\$	\$	\$ 40.40	\$ 31.00
County.....											
City.....											
Private Agencies.....											
Total.....	\$ 460.79	\$ 50.00	\$	\$ 410.79	\$ 310.39	\$ 17.50	\$ 11.50	\$	\$	\$ 40.40	\$ 31.00
February—Federal.....	\$ 435.87	\$ 40.00	\$	\$ 395.87	\$ 308.74	\$ 28.69	\$	\$ 24	\$	\$ 27.20	\$ 31.00
County.....											
City.....											
Private Agencies.....											
Total.....	\$ 435.87	\$ 40.00	\$	\$ 395.87	\$ 308.74	\$ 28.69	\$	\$ 24	\$	\$ 27.20	\$ 31.00
March—Federal.....	\$ 527.09	\$ 30.00	\$	\$ 497.09	\$ 273.91	\$ 27.50	\$ 12.65	\$ 2.00	\$	\$ 78.03	\$ 25.00
County.....											
City.....											
Private Agencies.....											
Total.....	\$ 527.09	\$ 30.00	\$	\$ 497.09	\$ 273.91	\$ 27.50	\$ 12.65	\$ 2.00	\$	\$ 78.03	\$ 25.00
April—Federal.....	\$ 751.84	\$ 30.00	\$	\$ 721.84	\$ 473.66	\$ 27.50	\$ 12.65	\$ 2.00	\$	\$ 78.03	\$ 25.00
County.....	\$ 1,165.03	\$ 655.20	\$	\$ 509.83	\$ 68.81	\$	\$	\$ 441.04	\$	\$	\$
City.....											
Private Agencies.....											
Total.....	\$ 1,403.28	\$ 686.40	\$	\$ 716.88	\$ 199.79	\$ 17.50	\$ 70	\$ 441.79	\$	\$ 26.10	\$ 31.00
May—Federal.....	\$ 2,071.50	\$ 1,871.50	\$	\$ 200.00	\$ 200.00	\$	\$	\$	\$	\$ 89.05	\$
County.....	\$ 383.25	\$ 117.20	\$	\$ 266.05	\$ 73.93	\$ 12.50	\$ 14.50	\$ 1.07	\$	\$	\$ 75.00
City.....											
Private Agencies.....											
Total.....	\$ 2,454.75	\$ 1,988.70	\$	\$ 466.05	\$ 273.93	\$ 12.50	\$ 14.50	\$ 1.07	\$	\$ 89.05	\$ 75.00
June—Federal.....	\$ 3,215.62	\$ 3,000.70	\$	\$ 214.92	\$ 214.92	\$ 12.50	\$ 14.61	\$ 4.85	\$	\$ 430.14	\$
County.....	\$ 674.21	\$ 147.39	\$	\$ 526.82	\$ 37.82	\$	\$	\$	\$	\$	\$ 26.90
City.....											
Private Agencies.....											
Total.....	\$ 3,889.83	\$ 3,148.09	\$	\$ 741.74	\$ 252.74	\$ 12.50	\$ 14.61	\$ 4.85	\$	\$ 430.14	\$ 26.90
July—Federal.....	\$ 4,218.37	\$ 4,208.40	\$	\$ 9.97	\$ 9.97	\$	\$	\$	\$	\$ 86.00	\$ 4.15
County.....	\$ 330.45	\$ 105.00	\$	\$ 225.45	\$ 103.91	\$ 12.50	\$ 16.80	\$ 1.34	\$	\$	\$ 75
City.....											
Private Agencies.....											
Total.....	\$ 4,548.82	\$ 4,313.40	\$	\$ 235.42	\$ 112.88	\$ 12.50	\$ 16.80	\$ 1.34	\$	\$ 86.00	\$ 4.15
August—Federal.....	\$ 6,308.50	\$ 6,248.50	\$	\$ 60.00	\$ 60.00	\$ 12.50	\$ 15.57	\$ 1.32	\$	\$ 110.59	\$ 53.70
County.....	\$ 395.90	\$ 105.00	\$	\$ 290.90	\$ 94.07	\$	\$	\$	\$	\$	\$ 3.15
City.....											
Private Agencies.....											
Total.....	\$ 6,704.40	\$ 6,353.50	\$	\$ 350.90	\$ 154.07	\$ 12.50	\$ 15.57	\$ 1.32	\$	\$ 110.59	\$ 53.70
September—Federal.....	\$ 7,022.20	\$ 6,560.20	\$	\$ 462.00	\$ 462.00	\$	\$	\$	\$	\$ 100.65	\$ 40.00
County.....	\$ 422.79	\$ 105.00	\$	\$ 317.79	\$ 122.78	\$ 12.50	\$ 13.68	\$ 1.24	\$	\$	\$ 26.94
City.....											
Private Agencies.....											
Total.....	\$ 7,444.99	\$ 6,665.20	\$	\$ 779.79	\$ 584.78	\$ 12.50	\$ 13.68	\$ 1.24	\$	\$ 100.65	\$ 40.00
October—Federal.....	\$ 5,837.25	\$ 5,530.42	\$	\$ 306.83	\$ 305.25	\$	\$ 1.58	\$	\$	\$ 215.86	\$
County.....	\$ 429.62	\$ 40.00	\$	\$ 389.62	\$ 56.02	\$ 7.50	\$ 2.00	\$ 13.74	\$	\$	\$ 94.50
City.....											
Private Agencies.....											
Total.....	\$ 6,266.87	\$ 5,570.42	\$	\$ 696.45	\$ 361.27	\$ 7.50	\$ 3.58	\$ 13.74	\$	\$ 215.86	\$ 94.50
November—Federal.....	\$ 8,802.03	\$ 7,830.85	\$	\$ 971.18	\$ 948.75	\$	\$ 22.43	\$	\$	\$ 202.70	\$ 66.50
County.....	\$ 476.06	\$ 40.00	\$	\$ 436.06	\$ 91.65	\$ 7.50	\$ 9.08	\$ 58.63	\$	\$	\$
City.....											
Private Agencies.....											
Total.....	\$ 9,278.09	\$ 7,870.85	\$	\$ 1,407.24	\$ 1,040.40	\$ 7.50	\$ 31.51	\$ 58.63	\$	\$ 202.70	\$ 66.50
December—Federal.....	\$ 10,223.32	\$ 9,498.93	\$	\$ 724.39	\$ 525.94	\$	\$ 198.45	\$	\$	\$ 433.80	\$ 138.10
County.....	\$ 807.81	\$ 40.00	\$	\$ 767.81	\$ 76.25	\$ 7.50	\$ 8.30	\$ 103.86	\$	\$	\$
City.....											
Private Agencies.....											
Total.....	\$ 11,031.13	\$ 9,538.93	\$	\$ 1,492.20	\$ 602.19	\$ 7.50	\$ 206.75	\$ 103.86	\$	\$ 433.80	\$ 138.10
Year 1934—Federal.....	\$ 49,150.09*	\$ 45,405.70	\$	\$ 3,744.39*	\$ 3,055.89	\$	\$ 222.46	\$ 441.04	\$	\$ 1,840.52	\$ 214.70
County.....	\$ 5,882.07	\$ 850.79	\$	\$ 4,731.28	\$ 1,680.45	\$ 176.19	\$ 119.39	\$ 189.04	\$	\$	\$ 7.30
City.....											
Private Agencies.....											
Grand Total.....	\$ 54,732.16*	\$ 46,256.49	\$	\$ 8,475.67*	\$ 4,736.34	\$ 176.19	\$ 341.85	\$ 630.68	\$	\$ 1,840.52	\$ 214.70

*Includes \$3,530.64 Estimated Valuation Surplus Commodities.

640

SHERIDAN COUNTY



SHERIDAN COUNTY

641

V—ANALYSIS OF WORK RELIEF PROGRAM BY PROJECT—January 1, through December 31, 1934

Sponsor	Description of Project	Wages & Salaries		Team, Truck & Equip.		Materials	Other Costs	Distribution of Costs			Total Costs
		Relief	Non-Relief	Relief	Non-Relief			Federal Funds	State Funds	Local Contributions	
Cities											
Hoxie... Repair*, Reconst.-Streets, etc.		\$ 261.60						\$ 261.60			\$ 261.60
Hoxie... Repair, Reconst.-Sewers, etc.		482.40				223.15		482.40		223.15	705.55
Hoxie... Repair, Reconst.-Recr. Facil., etc.		255.60	24.00		3.90	22.30		255.60		50.20	305.80
Seldon... Cemetery		496.80		109.20		30.37		606.00		30.37	636.37
Total City Projects		\$ 1,496.40	\$ 24.00	\$ 109.20	\$ 3.90	\$ 275.82		\$ 1,605.60		\$ 303.72	\$ 1,909.32
County											
Sheridan County											
Repair, Reconst.-Roads, etc.		\$24,143.10	\$ 2,011.72	\$10,942.60	\$ 500.00	\$ 5,064.93	\$ 728.34	\$ 37,145.92		\$ 6,244.77	\$ 43,390.69
Eng. for Water Conservation Program			1,984.01			19.53	438.25	2,422.26		19.53	2,441.79
Landscaping		28.80						28.80			28.80
Prod. & Dis. Gds. to Needy (Clothing)		456.80			75	2.10	640.36	1,096.80		13.21	1,110.01
Prod. & Dis. Gds. to Needy (Wood Cut.)		384.60			156.20		127.00	384.60		283.20	667.80
Prod. & Dis. Gds. to Needy (Bal. Feed)		147.20			26.88			174.08			174.08
Garden & Farm Ponds (Relief)		4.80			69.90	1,124.67		1,197.77		1.60	1,199.37
Pub. Educ., Arts, & Res. (Clerical)			631.00					631.00			631.00
Pub. Educ., Arts, & Res. (Clerical)		36.00						36.00			36.00
Administrative Projects		26.40	3,851.17		154.21		941.84	2,795.54		2,177.78	4,973.62
Pub. Welf., Health, & Recr. (Nursing)			142.60					142.60			142.60
Total County Projects		\$25,237.70	\$ 8,620.50	\$10,942.60	\$ 907.94	\$ 6,211.23	\$ 2,875.79	\$ 46,055.67		\$ 8,740.09	\$ 54,795.76
State & Federal											
State, New Const.-Highways, etc.		\$ 1,359.00	\$ 202.35	\$ 219.20	\$ 10.65		\$ 11.36	\$ 1,578.20	\$ 224.36		\$ 1,802.56
State, Feed, Ship., & Adm. of Cattle Pro.		62.40	535.84					598.24			598.24
State, Collect. & Class. Vital Stat.		18.00						18.00			18.00
Total State & Federal Projects		\$ 1,439.40	\$ 738.19	\$ 219.20	\$ 10.65		\$ 11.36	\$ 2,194.44	\$ 224.36		\$ 2,418.80
Grand Total		\$28,173.50	\$ 9,382.69	\$11,271.00	\$ 922.49	\$ 6,487.05	\$ 2,887.15	\$ 49,855.71	\$ 224.36	\$ 9,043.81	\$ 59,123.88

*Repair Does Not Include Maintenance.

VI—DISTRIBUTION OF COMMODITIES SUPPLIED BY FSRC AND KERC FOR THE YEAR 1934

Max. Relief Cases						Max. Relief Cases						
Unit of Measure	Amount Distributed	in Any 1 Mo.	Actual Costs	Estimated Valuation	Total	Unit of Measure	Amount Distributed	in Any 1 Mo.	Actual Costs	Estimated Valuation	Total	
Commodities Furnished by FSRC						Commodities Purchased by KERC						
Apples.....	Pounds		\$		\$	Sausage.....	Pounds		\$		\$	
Beef, Fresh.....	Pounds					Soup, Canned.....	Cans					
Beef, Canned.....	1½lb Cans	3,309	227	827.25	827.25	Mattresses*.....		32		320.00	320.00	
Blankets.....	Pounds					Comforts*.....						
Butter.....	Pounds	494	285	123.50	123.50	Pillow Cases*.....		54	54	81.00	81.00	
Cheese.....	Pounds					Sheets*.....						
Flour.....	24lb Sacks	94	34	94.00	94.00	Huck & Terry Towels*.....						
Grain & Feed.....	Bushels					New Garments**.....	364	93		219.96	219.96	
Lard.....	Pounds	180	60	16.20	16.20	Old Garments**.....	1	1		2.50	2.50	
Milkwheat-O.....	Pounds					Total.....			\$	\$ 1,600.71	\$ 1,600.71	
Pork, Salt.....	Pounds					Total Commodities.....			\$	\$ 3,278.35	\$ 3,278.35	
Pork, Smoked.....	Pounds	3,425	163	582.25	582.25	Fuel Distribution—FSRC						
Rice.....	Pounds	574	286	34.44	34.44	Coal.....	Tons	51.90		\$	\$ 252.29	\$ 252.29
Sugar.....	Pounds					Fuel Distribution—KERC						
Tongue, Frozen.....	Pounds					Coal.....	Tons	11.52		97.92	97.92	
Total.....			\$	\$ 1,677.64	\$ 1,677.64	Gas.....						
Commodities Purchased by KERC						Distribution Costs of FSRC						
Beef, Fresh.....	Pounds	410	41	\$	\$ 61.50	Coal Paid by KERC.....			90.83		90.83	
Beef, Canned.....	1½lb Cans	3,906	285		781.20	Total.....			\$ 188.75	\$ 252.29	\$ 441.04	
Cod Liver Oil.....	12 oz. Bottles.....					Grand Total.....			\$ 188.75	\$ 3,530.64	\$ 3,719.39	
Eggs.....	Dozen.....					*Raw Materials Furnished by FSRC. Finished Products Accomplished under Work Projects.						
Flour.....	12lb Sacks.....	299	291		134.55	**Materials Furnished for Work Projects from County and Private Funds.						
Grain & Feed.....	Bushels.....											
Pork, Smoked.....	Pounds.....											

*Raw Materials Furnished by FSRC. Finished Products Accomplished under Work Projects.

**Materials Furnished for Work Projects from County and Private Funds.

VII—ANALYSIS OF COUNTY ADMINISTRATIVE COSTS—1934

	Non-Relief Payrolls		Relief Payrolls		Equipment Rental	Materials	Other Costs	Total Costs
	Aver. Monthly No. Employed	Earnings	Aver. Monthly No. Employ'd	Earnings				
Administrative Projects								
County Funds.....	2.0	\$ 1,081.73			\$ 154.21		\$ 941.84	\$ 2,177.78
Federal Funds.....	4.6	2,769.44	2	26.40				2,795.84
Additional Administration—County Funds*	1.0	360.00					148.23	508.23
Supplemental Salaries								
City Funds.....								
Private Funds.....								
Total Costs.....		\$ 4,211.17		\$ 26.40	\$ 154.21		\$ 1,090.07	\$ 5,481.85

*Additional Administration January through March 31.



VIII—ANALYSIS OF CIVIL WORKS ADMINISTRATION PROJECTS FOR THE ENTIRE PERIOD, NOVEMBER 17, 1933, THROUGH JUNE 30, 1934

Sponsor	Description of Project	FEDERAL FUNDS				SPONSORS' CONTRIBUTIONS				DISTRIBUTION OF COSTS		
		CWA Payrolls		Purchase Orders		Wages	Team-Truck Equip. Exp.	Materials	Other Costs	Federal Funds	Local Funds	Gr'd Total Expenditures
		Wages	Team-Truck Equip. Exp.	Team-Truck Equip. Exp.	Materials							
Cities												
City of Hoxie.....	Street Improvement.....	\$ 566.10	\$ 170.25	\$	\$	\$	\$	\$ 62.39	\$ 1.50	\$ 736.35	\$ 63.89	\$ 800.24
City of Seldon.....	Street Improvement.....	981.91	15.00	981.91	15.00	996.91
City of Hoxie.....	Street Improvement.....	1,950.95	1,046.42	165.02	2,977.37	165.02	3,142.39
City of Seldon.....	Cemetery Improvement.....	833.01	31.45	11.60	8.55	864.46	20.15	884.61
City of Hoxie.....	Public Utility Improvement.....	756.60	365.84	756.60	365.84	1,122.44
Total City Projects.....		\$ 5,085.57	\$ 1,248.12	\$	\$	\$	\$ 15.00	\$ 604.85	\$ 10.05	\$ 6,516.69	\$ 629.90	\$ 6,946.59
County												
Sheridan County.....	Roads.....	\$ 9,093.91	\$12,728.80	\$	\$	\$	\$ 202.85	\$ 758.05	\$2,121.38	\$21,822.71	\$3,082.28	\$24,904.99
Sheridan County.....	Local CWA Office.....	1,305.88	187.56	1,305.88	187.56	1,493.44
Sheridan County.....	Re-employment Office.....	913.17	183.60	913.17	183.60	1,096.77
Total County Projects.....		\$11,312.96	\$12,728.80	\$	\$	\$	\$ 202.85	\$ 758.05	\$2,462.54	\$24,041.76	\$3,423.44	\$27,465.20
State & Federal												
State.....	Roads.....	\$ 1,240.10	\$ 3,349.78	\$	\$1,420.00	\$	\$ 121.75	\$ 831.45	\$1,134.59	\$ 6,009.88	\$2,087.79	\$ 8,097.67
State.....	Sign Boards.....	60.00	48.95	108.95	108.95
Federal.....	Farm Mortgages & Land Values.....	378.30	378.30	378.30
Total State & Federal Projects.....		\$ 1,678.40	\$ 3,349.78	\$	\$1,468.95	\$	\$ 121.75	\$ 831.45	\$1,134.59	\$ 6,497.13	\$2,087.79	\$ 8,584.92
Grand Total.....		\$18,059.93	\$17,326.70	\$	\$1,468.95	\$	\$ 339.60	\$2,194.35	\$3,697.18	\$36,855.58	\$6,141.13	\$42,996.71

IX—CIVIL WORKS ADMINISTRATION—EMPLOYMENT, MAN HOURS, AND WAGES FOR THE ENTIRE PERIOD, NOVEMBER 17, 1933, THROUGH JUNE 30, 1934

	Employment Data Covering Work Projects and Tool and Sundry Equipment Projects						Employment Data Covering Administrative Projects		Summary						
	All Payrolls Covering Projects Employing Principally Labor			All Payrolls Covering Drivers of Their Own Teams, Trucks and Other Mechanical Equipment			Payrolls on Project Employing Chiefly Professional & Cler. Wk's		Payrolls for Employees of State & Local Administrative Proj.		Total Number of Employees	Total Earnings, Wages, Salaries and Hire	Accident Compensation	Grand Total	
	Average Weekly No. of Employees	Total Man Hours Worked	Total Wages Earned	Average Weekly No. of Employees	Total Hours Worked	Total Earnings Wages-Hire	Average Weekly No. of Employees	Salaries and Wages Earned	Average No. of Employees	Salaries and Wages Earned	Weekly Average	Total	Average Weekly Wage	Average Number Men	Total Amount
Sheridan County															
Total 1933.....	106.0	18,142	\$ 7,584.11	37.2	5,906	\$ 4,073.25	\$	4.3	\$ 391.84	147.5	\$12,049.20	\$13.61	\$
Total—															
First 3 Mo. 1934....	73.0	18,484	7,809.42	72.1	18,054	13,060.30	1.7	342.90	7.2	1,583.38	154.0	22,796.00	11.39
Total—															
Second 3 Mo. 1934....	2.7	512	155.10	1.2	278	138.60	0.9	185.23	0.6	62.50	5.4	541.43	7.73
Total.....	59.6	37,138	\$15,548.63	36.7	24,188	\$17,272.15	1.1	\$528.13	4.9	\$2,037.72	92.4	\$35,386.63	\$11.97	\$



SHERMAN COUNTY

643

Board of County Commissioners—Harold Daise, Chairman, Kanorado; Kyle F. Mann, Edson; Edward Wilkinson, Goodland.

County Emergency Relief Committee—L. N. Shaw, Chairman, Goodland; H. E. Elder, Goodland; H. M. Steever, Goodland; Edward Wilkinson, Goodland; Harold Daise, Kanorado.

County Poor Commissioner—Theodore Harding; County Case Supervisor—F. Henry High; Supervisor of Work Program—Paul L. Millard (December, 1934).

Assessed Valuation—\$9,777,756 (March 1, 1934); Bonded Indebtedness—\$175,448.59 (October 1, 1934); Population—7,382 (March, 1934); Total Population on Relief—1,223; Per Cent—16.6 (December, 1934).

EXPENDITURES FOR RELIEF AND CWA FROM ALL SOURCES, 1934*

	Relief Program	CWA Program	Total
Total County Funds.....	\$ 14,806.22	\$.....	\$ 14,806.22
Total Township Funds.....	2,392.55	2,392.55
Total City Funds.....
Total School Funds.....
Total Privately Raised Funds.....	2,883.35	2,883.35
Total State Funds.....	411.74	411.74
Total Federal Funds.....	58,465.16	28,993.98	87,459.14
Total.....	\$ 78,959.02	\$ 28,993.98	\$ 107,953.00

EXPENDITURES FOR RELIEF AND CWA FROM ALL SOURCES, 1924-1933*

	Relief Program	CWA Program	Total
Total County Funds.....	\$ 65,197.46	\$.....	\$ 65,197.46
Total Private Funds.....	19,882.06	19,882.06
Total City Funds.....	5,800.00	5,800.00
Total Federal Funds.....	20,967.30	12,230.81	33,198.11
Total.....	\$111,846.82	\$ 12,230.81	\$124,077.63

*Excludes All Non-relief Obligations Except Payrolls.

WORK RELIEF AND CWA, OCTOBER, 1932, THROUGH DECEMBER, 1934

Although improvement of the county road system was the most important accomplishment made in Sherman county under the work relief and CWA programs (October, 1932, through December, 1934) because it is of benefit to the county as a whole, the construction of the Goodland airport has been a notable achievement. The airport is considered one of the most outstanding in the mid-western area, and enjoys heavy transient traffic as it is the first gas stop east of Denver. The project was carried out under the CWA and was a new development on the old airport which was entirely inadequate in size. Inside the hangar, which is constructed of concrete blocks with white cement finish, there is space for a radio room, an attendant's quarters, and plane storage. The runways were made by removing about six inches of dirt and sod, and then grading the strips where the dirt was removed. This dirt was used to fill in several low places in the field.

Road work was well distributed over the entire county. By the close of 1934, 143 miles of county and township roads had been surfaced, five bridges and large culverts built, 10 miles of state highway surfaced, and 150 blocks of streets, mainly in Goodland and Kanorado, were improved.

Accomplishments under the water conservation program included the construction of nine garden ponds and five farm ponds.

At Goodland improvements consisted of repair of one schoolhouse, the library, one sewage disposal plant, and work on one park. The municipal golf course there was landscaped and otherwise improved by CWA labor. Trees and shrubs were planted, new greens were made and some sodding done, driveways were graded, and a small dam was built across a draw to facilitate drainage. Sewing room workers at Goodland produced 1,077 garments.

The establishment of work projects adaptable to the working abilities of the relief clients has been an outstanding development of the county relief administration, local relief officials report. There also has been excellent co-ordination between the county and all other local relief dispensing agencies. Although the relief load increased during 1934 the cause was only temporary, county officials believed, as it was due to drought conditions and the resulting exhaustion of the farmers' resources.

I—ANALYSIS OF ALL RELIEF GRANTED FROM FEDERAL, LOCAL PUBLIC, AND PRIVATE WELFARE AGENCY FUNDS—1934

ITEMS	RESIDENT FAMILIES				RESIDENT SINGLES				RESIDENT TOTAL				TRANSIENTS		GRAND TOTAL
	Aver. Mo. No. Cases	Aver. Mo. No. Persons Rept.	Amount	Aver. Mo. Relief Per Case	Aver. Mo. No. Cases	Amount	Aver. Mo. Relief Per Case	Aver. Mo. No. Cases	Amount	Aver. Mo. Relief Per Case	Actual No. Persons	Amount	Actual No. Persons	Amount	All Relief Granted
Section A—Work and Direct Relief															
Approved Work Projects															
Federal Funds.....	149.3	615.0	\$ 41,211.15	\$ 23.00	21.1	\$ 2,907.58	\$ 11.49	170.4	\$ 44,118.73	\$ 21.57	\$.....	\$.....	\$ 44,118.73
County Funds.....	149.3	615.0	\$ 41,211.15	\$ 23.00	21.1	\$ 2,907.58	\$ 11.49	170.4	\$ 44,118.73	\$ 21.57	\$.....	\$.....	\$ 44,118.73
Total.....	149.3	615.0	\$ 41,211.15	\$ 23.00	21.1	\$ 2,907.58	\$ 11.49	170.4	\$ 44,118.73	\$ 21.57	\$.....	\$.....	\$ 44,118.73
Additional County Projects	149.3	615.0	\$ 41,211.15	\$ 23.00	21.1	\$ 2,907.58	\$ 11.49	170.4	\$ 44,118.73	\$ 21.57	\$.....	\$.....	\$ 44,118.73
Total Work Relief.....	149.3	615.0	\$ 41,211.15	\$ 23.00	21.1	\$ 2,907.58	\$ 11.49	170.4	\$ 44,118.73	\$ 21.57	\$.....	\$.....	\$ 44,118.73
Direct Relief															
County Funds.....	54.6	232.9	\$ 4,097.71	\$ 6.26	22.8	\$ 1,457.35	\$ 5.32	77.4	\$ 5,555.06	\$ 5.98	95	\$ 284.98	\$.....	\$ 5,840.04
Federal Funds.....	63.00	63.00	63.00
Garden Seed.....	1,434.35	1,434.35	1,434.35
Fuel Distribution.....	5,595.06	7,052.41	95	\$ 284.98	\$.....	7,337.39
Total.....	54.6	232.9	\$ 4,097.71	\$ 6.26	22.8	\$ 1,457.35	\$ 5.32	77.4	\$ 5,555.06	\$ 5.98	95	\$ 284.98	\$.....	\$ 5,840.04
Total Work & Direct Relief.....	203.9	847.9	\$ 46,806.21	43.9	\$ 4,364.93	247.8	\$ 51,171.14	95	\$ 284.98	\$.....	\$ 51,456.12
Less Duplicated Cases.....	19.3	93.2	1.5	20.8
Net Total, Section A.....	184.6	754.7	\$ 46,806.21	42.4	\$ 4,364.93	227.0	\$ 51,171.14	95	\$ 284.98	\$.....	\$ 51,456.12
Section B—Special Programs															
Federal Grants in Aid															
Emergency Educ. Pro.†.....
College Student Pro.†.....
Homestead Rehabilitation Civil Works Service.....	4.5	20.5	\$ 522.10	\$ 29.01	1.3	\$ 69.20	\$ 17.30	5.8	\$ 591.30	\$ 26.87	\$ 591.30
Total Section B.....	4.5	20.5	\$ 522.10	1.3	\$ 69.20	5.8	\$ 591.30	\$ 591.30
Section C—Other Relief from County Funds															
Poor Farm.....	7.3	\$ 1,003.99	\$ 11.54	7.3	\$ 1,003.99	\$ 11.54	\$ 1,003.99
Hospitalization.....	2.7	3.0	\$ 1,586.50	\$ 49.58	2.7	\$ 1,586.50	\$ 49.58	\$ 1,586.50
Other Institutions.....	0.3	0.3	\$ 66.84	\$ 16.71	0.3	\$ 66.84	\$ 16.71	\$ 66.84
Pensions.....	2.7	5.3	\$ 280.00	\$ 8.75	2.7	\$ 280.00	\$ 8.75	\$ 280.00
Mothers Aid.....	3.2	11.2	\$ 420.00	\$ 11.02	3.2	\$ 420.00	\$ 11.02	\$ 420.00
Crippled Children.....	1.9	1.9	\$ 436.35	\$ 19.87	1.9	\$ 436.35	\$ 19.87	\$ 436.35
All Other (Burials, etc.).....	0.8	0.8	\$ 384.93	\$ 43.88	0.8	\$ 384.93	\$ 43.88	\$ 384.93
Total Section C.....	11.6	22.5	\$ 3,174.62	\$ 22.84	7.3	\$ 1,003.99	\$ 11.54	18.9	\$ 4,178.61	\$ 18.41	\$ 4,178.61
Section D—Relief from Private Agencies															
Red Cross.....	33.9	136.8	\$ 964.75	\$ 2.37	33.9	\$ 964.75	\$ 2.37	\$ 964.75
Religious Organizations.....	9.4	36.2	\$ 407.00	\$ 3.63	9.4	\$ 407.00	\$ 3.63	\$ 407.00
Fraternal Clubs.....	9.1	38.8	\$ 428.00	\$ 3.93	9.1	\$ 428.00	\$ 3.93	\$ 428.00
Community Chest.....
Associated Charities.....
Welfare Boards.....
Salvation Army.....
Parent-Teachers Assn.....
Other Agencies.....	47.6	239.1	\$ 1,083.60	\$ 1.90	47.6	\$ 1,083.60	\$ 1.60	\$ 1,083.60
Total Section D.....	99.9	450.8	\$ 2,883.35	\$ 2.40	99.9	\$ 2,883.35	\$ 2.40	\$ 2,883.35
Section E—Relief from City Funds															
Total Sections A to E, Incl.	300.6	1,248.5	\$ 53,386.28	51.0	\$ 5,438.12	351.6	\$ 58,824.40	95	\$ 284.98	\$.....	\$ 59,109.38
Section F—Surp. Commodities—Est. Val.															
Commodities Granted by†															
Fed. Surplus Relief Corp.....	\$ 3,223.28	\$ 3,223.28	\$ 3,223.28
Kansas Emer. Relief Com.....	\$ 3,454.53	\$ 3,454.53	\$ 3,454.53
Fuel Granted by†
Fed. Surplus Relief Corp.....
Total Section F.....	\$ 6,677.81	\$ 6,677.81	\$ 6,677.81
Grand Total All Relief.....	\$ 60,064.09	\$ 5,438.12	\$ 65,502.21	\$ 284.98	\$.....	\$ 65,787.19

*Cases Included in Schedule III. †Cases Included in Schedule VI. ‡Case Averages Based on Actual Number of Months Program Was in Operation.



644

SHERMAN COUNTY

II—SUMMARY OF ALL OBLIGATIONS INCURRED FOR RELIEF AND THE WORK RELIEF PROGRAM FOR YEAR 1934 AND CIVIL WORKS ADMINISTRATION FROM NOVEMBER 17, 1933, THROUGH JUNE 30, 1934

Consolidated Statement of All Obligations for These Purposes Against Federal, State, Local Public, Private and Private Welfare Agency Funds

ITEMS	Federal Funds	County Funds	City Funds	Township Funds	School Funds	Private Funds	Total Funds	State Funds	Private Agcy. Funds	Grand Total All Funds
Section A										
Work Relief—Wages on Approved Projects	\$ 44,118.73	\$	\$	\$	\$	\$	\$ 44,118.73	\$	\$	\$ 44,118.73
Section B										
Non-Relief Obligations—Work Relief Pro.										
Materials										
Aggregate Materials & Stone	\$ 210.63	\$ 2.75	\$ 486.97	\$	\$	\$	\$ 700.35	\$	\$	\$ 700.35
Cement	515.45		549.80				1,065.25			1,065.25
Bituminous Materials		5.00	81.85				86.85			86.85
Petroleum Products		14.40					14.40			14.40
Iron & Steel	2,889.08	123.05	9.60				3,021.73			3,021.73
Clay Products	67.56		234.00				301.56			301.56
Lumber	1,030.85	1,091.33	528.98				2,651.16			1,651.16
Plumbing & Heating	266.18	99.23	30.17				395.58			395.58
Hardware	55.71	58.63	65.32				179.66			179.66
Explosives		22.75					22.75			22.75
Paint & Paint Materials	148.83	5.80	100.69				255.32			255.32
Total Materials	\$ 5,184.29	\$ 1,422.94	\$ 2,087.38	\$	\$	\$	\$ 8,694.61	\$	\$	\$ 8,694.61
Team, Truck, & Equipment Expense										
Equipment Parts & Supplies	\$	\$ 12.95	\$ 31.59	\$	\$	\$	\$ 44.54	\$	\$	\$ 44.54
Office Supplies & Equipment		269.11					269.11			269.11
Rental of Equipment	10,227.25	3,051.90	892.83				14,171.98	192.83		14,364.81
Total Team, Truck, & Equip. Exp.	\$ 10,227.25	\$ 3,333.96	\$ 924.42	\$	\$	\$	\$ 14,485.63	\$ 192.83	\$	\$ 14,678.46
Other Costs										
Tools	\$	\$ 10.55	\$ 26.80	\$	\$	\$	\$ 37.35	\$	\$	\$ 37.35
Rental of Premises		337.00					337.00			337.00
Other Services	121.40	281.80					403.20			403.20
Other Charges			50.50				50.50			50.50
Miscellaneous	467.68	8.90	15.65				492.23			492.23
Total Other Costs	\$ 589.08	\$ 638.25	\$ 92.95	\$	\$	\$	\$ 1,320.28	\$	\$	\$ 1,320.28
Wages & Salaries	\$ 5,579.97	\$ 4,352.57	\$ 2,392.55	\$	\$	\$	\$ 12,325.09	\$ 411.74	\$	\$ 12,736.83
Total Non-Relief Obligations	\$ 21,580.59	\$ 9,747.72	\$ 5,497.30	\$	\$	\$	\$ 36,825.61	\$ 604.57	\$	\$ 37,430.18
Total Sections A & B	\$ 65,699.32	\$ 9,747.72	\$ 5,497.30	\$	\$	\$	\$ 80,944.34	\$ 604.57	\$	\$ 81,548.91
Section C										
Additional County Work Relief										
Direct Relief	\$ 1,497.35	\$ 5,840.04	\$	\$	\$	\$	\$ 7,337.39	\$	\$	\$ 7,337.39
Admin. Costs Prior to Admin. Projects										
Wages & Salaries		435.00					435.00			435.00
Other Costs		98.60					98.60			98.60
Total	\$	\$ 533.60	\$	\$	\$	\$	\$ 533.60	\$	\$	\$ 533.60
Total Section C	\$ 1,497.35	\$ 6,373.64	\$	\$	\$	\$	\$ 7,870.99	\$	\$	\$ 7,870.99
Section D										
Relief from Special Programs										
Other Relief from County Funds	\$ 591.30	\$	\$	\$	\$	\$	\$ 591.30	\$	\$	\$ 591.30
Other Relief from City Funds		4,178.61					4,178.61			4,178.61
Relief from Private Welfare Agency Funds										
Surplus Commodities & Fuel—Est. Value	6,677.81						6,677.81	2,883.35		2,883.35
Supplemental Administrative Salaries										
Total Section D	\$ 7,269.11	\$ 4,178.61	\$	\$	\$	\$	\$ 11,447.72	\$ 2,883.35	\$	\$ 14,331.07
Grand Total Sections A to D, Incl.	\$ 74,465.78	\$ 20,299.97	\$ 5,497.30	\$	\$	\$	\$ 100,263.05	\$ 604.57	\$ 2,883.35	\$ 103,750.97
Section E										
Civil Works Administration										
Work Projects										
Payrolls	\$ 39,234.54	\$	\$	\$	\$	\$	\$ 39,234.54	\$	\$	\$ 39,234.54
Other Costs	9,025.44	1,042.10	9,886.24	358.20			20,311.98	2,151.64		22,463.62
Total	\$ 48,259.98	\$ 1,042.10	\$ 9,886.24	\$ 358.20	\$	\$	\$ 59,546.52	\$ 2,151.64	\$	\$ 61,698.16
Administration										
Payrolls	\$ 1,990.25	\$	\$	\$	\$	\$	\$ 1,990.25	\$	\$	\$ 1,990.25
Other Costs		946.29					946.29			946.29
Total	\$ 1,990.25	\$ 946.29	\$	\$	\$	\$	\$ 2,936.54	\$	\$	\$ 2,936.54
Total Civil Works Administration	\$ 50,250.23	\$ 1,988.39	\$ 9,886.24	\$ 358.20	\$	\$	\$ 62,483.06	\$ 2,151.64	\$	\$ 64,634.70
Grand Total	\$ 124,716.01	\$ 22,288.36	\$ 15,383.54	\$ 358.20	\$	\$	\$ 162,746.11	\$ 2,756.21	\$ 2,883.35	\$ 168,385.67

III—MONTHLY RECORD OF RESIDENT CASES SHOWING APPLICATIONS RECEIVED, CASES OPENED, ACTIVE AND INACTIVE CASES, AND CASES CLOSED FOR YEAR 1934

	Cases at Beginning of Mo.	Applications Rec'd	Total Cases Opened	New Cases Opened	Old Cases Re-Opened	Total Mo. Case Load	Cases Rec'd Relief	*Cases Homest'd Rehab. Project	Cases Received No Relief	Total Cases Closed	Cases Closed Because Employ't	Cases Closed Other Reasons	Cases Open End of Mo.	Cases Active End of Month	Cases Inactive End of Month
January	33	21	21	14	7	54	54	3	...	3	51	51	...
February	51	32	32	8	24	83	83	83	83	...
March	83	84	84	6	78	167	167	14	...	14	153	153	...
April	133	289	69	58	11	222	185	...	37	37	21	16	185	185	...
May	185	13	12	7	5	197	197	24	4	20	173	173	...
June	173	43	43	24	19	216	207	...	9	9	6	3	207	207	...
July	207	38	37	25	12	244	238	...	6	6	3	3	238	238	...
August	238	77	69	8	315	285	285	...	30	20	3	17	285	285	10
September	285	38	36	28	8	331	304	1	27	12	2	10	319	303	16
October	319	49	31	27	4	350	342	6	8	50	22	28	300	291	9
November	300	115	71	49	22	371	325	10	46	25	1	24	346	325	21
December	346	43	36	28	8	382	359	5	23	16	9	7	366	356	10

*Included in Cases Receiving Relief.

SHERMAN COUNTY



CHAPEL-GOODLAND CEMETERY--80-B20-33



CARETAKER'S HOUSE-GOODLAND FAIRGROUNDS-80-B21-3



HANGAR-GOODLAND MUNICIPAL AIPORT--80-B15-1



IMPROVED CITY PARK-GOODLAND--80-B10-9



GOODLAND GOLF COURSE IMPROVED--80-B12-13



IV—ANALYSIS OF PAYMENTS IN CASH OR IN KIND FOR ALL RELIEF GRANTED FROM FEDERAL, LOCAL PUBLIC, AND PRIVATE WELFARE AGENCY FUNDS—1934

ANALYSIS OF PAYMENTS IN KIND														
Source of Funds	Total Relief Extended	Payments in Cash	Payments for Which Type Not Defined	Payments in Kind	Food and Household Necessities	Shelter	Clothing	Fuel	Public Utilities	Medical Care	Institutional Care	Subsistence Crops	Feed for Stock	All Other
January—Federal.....	\$ 170.10	\$.....	\$.....	\$ 170.10	\$ 170.10	\$.....	\$.....	\$.....	\$.....	\$.....	\$.....	\$.....	\$.....	\$.....
County.....	687.62	95.00	592.62	129.13	6.30	23.61	15.95	365.64	51.99
City.....	315.35	315.35
Private Agencies.....	1,173.07	95.00	315.35	762.72	299.23	6.30	23.61	15.95	365.64	51.99
February—Federal.....	\$ 516.49	\$.....	\$.....	\$ 516.49	\$ 480.49	\$.....	\$.....	\$.....	\$.....	\$ 36.00
County.....	690.87	154.76	536.11	194.15	8.00	12.04	265.84	38.40	17.68
City.....	317.23	317.23
Private Agencies.....	1,524.59	154.76	317.23	1,052.60	674.64	8.00	12.04	301.84	38.40	17.68
March—Federal.....	\$ 503.68	\$.....	\$.....	\$ 503.68	\$ 440.68	\$.....	\$.....	\$.....	\$.....
County.....	910.27	81.45	828.82	203.46	9.80	73.10	375.36	62.10	63.00	105.00
City.....	294.05	294.05
Private Agencies.....	1,708.00	81.45	294.05	1,332.50	644.14	9.80	73.10	375.36	62.10	63.00	105.00
April—Federal.....	\$ 3,738.33	\$ 1,963.85	\$.....	\$ 1,774.48	\$ 340.13	\$.....	\$.....	\$ 1,434.35	\$.....	312.68	90.10	90.40
County.....	899.84	77.54	822.30	282.89	34.25	8.28	3.70
City.....	204.70	204.70
Private Agencies.....	4,842.87	2,041.39	204.70	2,596.78	623.02	34.25	8.28	1,434.35	3.70	312.68	90.10	90.40
May—Federal.....	\$ 2,379.60	\$ 1,968.90	\$.....	\$ 410.70	\$ 410.70	\$.....	\$.....	\$.....	\$.....	161.21	88.70	47.93
County.....	761.54	65.00	696.54	343.39	55.31
City.....	171.20	171.20
Private Agencies.....	3,312.34	2,033.90	171.20	1,107.24	754.09	55.31	161.21	88.70	47.93
June—Federal.....	\$ 3,742.65	\$ 3,410.95	\$.....	\$ 331.70	\$ 331.70	\$.....	\$.....	\$.....	\$.....	286.94	86.50	48.00
County.....	856.07	25.00	831.07	402.69	3.34	3.60
City.....	150.20	150.20
Private Agencies.....	4,748.92	3,435.95	150.20	1,162.77	734.39	3.34	3.60	286.94	86.50	48.00
July—Federal.....	\$ 4,567.15	\$ 4,477.45	\$.....	\$ 89.70	\$ 89.70	\$.....	\$.....	\$.....	\$.....	218.63	97.05
County.....	721.07	25.00	696.07	355.56	22.33	3.10
City.....	121.40	121.40
Private Agencies.....	5,410.22	4,502.45	121.40	786.37	445.26	22.33	3.10	218.63	97.05
August—Federal.....	\$ 6,760.70	\$ 6,569.20	\$.....	\$ 191.50	\$ 191.50	\$.....	\$.....	\$.....	\$.....	351.55	164.49
County.....	1,014.80	35.00	979.80	417.91	16.25	26.40	3.20
City.....	126.60	126.60
Private Agencies.....	7,902.10	6,604.20	126.60	1,171.30	609.41	16.25	26.40	3.20	351.55	164.49
September—Federal.....	\$ 6,081.29	\$ 5,430.29	\$.....	\$ 651.00	\$ 651.00	\$.....	\$.....	\$.....	\$.....	331.43	94.50	34.68
County.....	980.46	60.00	920.46	316.21	24.43	57.46	57.55	4.20
City.....	270.55	270.55
Private Agencies.....	7,332.30	5,490.29	270.55	1,571.46	967.21	24.43	57.46	57.55	4.20	331.43	94.50	34.68
October—Federal.....	\$ 7,326.04	\$ 5,779.54	\$.....	\$ 1,546.50	\$ 1,546.50	\$.....	\$.....	\$.....	\$.....	247.96	97.80	48.00
County.....	854.80	75.00	779.80	395.74	64.45	5.85
City.....	157.95	157.95
Private Agencies.....	8,418.79	5,854.54	157.95	2,406.30	1,942.24	64.45	5.85	247.96	97.80	48.00
November—Federal.....	\$ 8,519.63	\$ 7,187.78	\$.....	\$ 1,331.85	\$ 1,331.85	\$.....	\$.....	\$.....	\$.....	261.79	100.20
County.....	804.13	35.00	769.13	297.01	64.53	39.75	5.85
City.....	195.60	195.60
Private Agencies.....	9,519.36	7,222.78	195.60	2,100.98	1,628.86	64.53	39.75	5.85	261.79	100.20
December—Federal.....	\$ 8,579.53	\$ 7,922.07	\$.....	\$ 657.46	\$ 655.68	\$.....	\$.....	\$.....	\$.....
County.....	746.58	45.00	711.58	256.00	67.54	64.30	6.30	170.44	99.00	48.00
City.....	558.52	558.52
Private Agencies.....	9,804.63	7,967.07	558.52	1,369.04	911.68	69.32	64.30	6.30	170.44	99.00	48.00
Year 1934—Federal.....	\$ 52,885.19*	\$ 44,710.03	\$.....	\$ 8,175.16*	\$ 6,640.03	\$.....	\$ 1.78	\$ 1,434.35	\$ 35.80	\$ 3,349.47	\$ 1,070.83	\$ 63.00	\$ 439.69
County.....	10,018.65	773.75	9,244.90	3,594.14	89.23	415.09	250.65
City.....	2,883.35	2,883.35
Private Agencies.....	65,787.19*	45,483.78	2,883.35	17,420.06*	10,234.17	89.23	416.87	1,685.00	35.80	3,385.47	1,070.83	63.00	439.69
Grand Total.....	\$ 65,787.19*	\$ 45,483.78	\$ 2,883.35	\$ 17,420.06*	\$ 10,234.17	\$ 89.23	\$ 416.87	\$ 1,685.00	\$ 35.80	\$ 3,385.47	\$ 1,070.83	\$ 63.00	\$ 439.69

*Includes \$6,677.81 Estimated Valuation Surplus Commodities.



SHERMAN COUNTY

647

V—ANALYSIS OF WORK RELIEF PROGRAM BY PROJECT—January 1, through December 31, 1934

Sponsor	Description of Project	Wages & Salaries		Team, Truck & Equip.		Materials	Other Costs	Distribution of Costs			Total Costs
		Relief	Non-Relief	Relief	Non-Relief			Federal Funds	State Funds	Local Contributions	
Cities											
Goodland..	Repair*, Reconst.-Streets, etc.	\$ 2,430.25	\$ 192.96	\$ 62.40	\$ 1,845.20	\$ 141.48	\$ 4.50	\$ 4,332.85		\$ 343.94	\$ 4,676.79
Kanorado..	Repair, Reconst.-Streets, etc.	1,890.80	608.23		216.70	49.10	2.00	1,990.90		775.93	2,766.83
Goodland..	Repair, Reconst.-Pub. Bldgs.	265.60			1.00	99.14	12.65	265.60		82.79	348.39
Goodland..	Repair, Reconst.-Pub. Bldgs.	220.00				55.01	7.00	220.00		62.01	282.01
Goodland..	Repair, Reconst.-Sew. & Drain.	2,020.60		67.20	27.71	256.88	2.00	2,087.80		286.59	2,374.39
Goodland..	Repair, Reconst.-Pub. Utilities.	1,541.00	211.12	121.60	33.00	1,183.59	243.44	2,170.37		863.44	3,333.81
Goodland..	Repair, Reconst.-Recr. Facil.	2,839.70		490.00	245.00	205.80	45	3,329.70		451.25	3,780.95
Goodland..	Repair, Reconst.-Airports.	9,565.68	1,380.24	807.30	2,846.05	1,137.10	124.39	13,229.41		2,631.35	15,860.76
Total City Projects.....		\$20,773.63	\$ 2,392.55	\$ 1,518.50	\$ 5,214.72	\$ 3,098.10	\$ 396.43	\$ 27,926.63		\$ 5,497.30	\$ 33,423.93
County											
Sherman County											
Repair, Reconst.-Roads, etc.		\$10,402.40	\$ 1,851.87	\$ 1,115.25	\$ 4,179.87	\$ 1,098.08	\$ 6.45	\$ 15,174.60		\$ 3,479.32	\$ 18,653.92
Repair, Reconst.-Fairgrounds		2,778.50		54.20	172.00	103.43	1,529.52	37.07		4,193.63	4,674.72
Eng. for Water Conservation Program			1,459.34			76.55		1,580.74		114.05	1,694.79
Prod. & Dis. Gds. to Needy (Clothing)		480.00				8.65		820.13		46.15	666.28
Prod. & Dis. Gds. to Needy (Bal. Feed)		1,104.95				883.80		1,104.95		883.80	1,988.75
Pub. Well., Health, & Recr.-Garden & Farm Ponds (Relief)		1,321.60			2,436.58	2,608.06		5,513.66		852.58	6,366.24
Pub. Well., Health, & Recr.-Garden & Farm Ponds (Non-Relief)		1,817.90			1,267.14	346.45		2,860.35		571.14	3,431.49
Pub. Educ., Arts, & Res. (Clerical)			465.00					465.00			465.00
Administrative Projects		399.00	5,905.13		314.89	14.40	543.80	3,857.63		3,319.59	7,177.22
Prod. & Dis. Gds. to Needy (Clothing)		18.10						18.10			18.10
Total County Projects.....		\$18,322.45	\$ 9,735.54	\$ 1,287.25	\$ 9,270.91	\$ 5,596.51	\$ 923.85	\$ 35,388.79		\$ 9,747.72	\$ 45,136.51
State & Federal											
State, Repair, Reconst.-Highways, etc.		\$ 1,721.40	\$ 411.74	\$ 16.00	\$ 192.83			\$ 1,737.40	\$ 604.57		\$ 2,341.97
Fed. Hous. Adm., Sur. of Houses Needing Repair		186.00						186.00			186.00
State, Feed, Ship., & Adm. of Cattle Pro.			197.00					197.00			197.00
State, Adj. of Labor & Fair Trade Practice (Professional Project)		102.20						102.20			102.20
State, Collect. & Class. Vital Stat. (Professional Project)		60.00						60.00			60.00
State, School Recr. Sur. (Prof. Project)		35.30						35.30			35.30
State, Child Health Program		66.00						66.00			66.00
Total State & Federal Projects.....		\$ 2,170.90	\$ 608.74	\$ 16.00	\$ 192.83			\$ 2,383.90	\$ 604.57		\$ 2,988.47
Grand Total.....		\$41,266.98	\$12,736.83	\$ 2,851.75	\$14,678.46	\$ 8,694.61	\$ 1,320.28	\$ 65,699.32	\$ 604.57	\$15,245.02	\$ 81,548.91

*Repair Does Not Include Maintenance.

VI—DISTRIBUTION OF COMMODITIES SUPPLIED BY FSRC AND KERC FOR THE YEAR 1934

Max. Relief Cases							Max. Relief Cases					
Unit of Measure	Amount Distributed	in Any 1 Mo.	Actual Costs	Estimated Valuation	Total		Unit of Measure	Amount Distributed	in Any 1 Mo.	Actual Costs	Estimated Valuation	Total
Commodities Furnished by FSRC												
Apples.....	Pounds		\$.....	\$.....	\$.....		Sausage.....	Pounds		\$.....	\$.....	\$.....
Beef, Fresh.....	Pounds						Soup, Canned.....	Cans				
Beef, Canned.....	1½lb Cans	4,967	328	1,241.75	1,241.75		Mattresses**.....		38	38	380.00	380.00
Blankets.....							Comforts*.....					
Butter.....	Pounds	600	300	150.00	150.00		Pillow Cases*.....					
Cheese.....	Pounds						Sheets*.....					
Flour.....	24lb Sacks	190	64	190.00	190.00		Huck & Terry Towels*.....					
Grain & Feed.....	Bushels						Straw Ticks*.....					
Lard.....	Pounds						New Garments**.....	2	2		1.78	1.78
Milk.....	Pounds						Old Garments**.....					
Milk, Condensed.....	Pounds						Total.....			\$.....	\$ 3,454.53	\$ 3,454.53
Pork, Salt.....	Pounds						Total Commodities.....			\$.....	\$ 6,677.81	\$ 6,677.81
Pork, Smoked.....	Pounds	9,385	309	1,595.45	1,595.45							
Rice.....	Pounds	768	336	46.08	46.08		Fuel Distribution—FSRC					
Sugar.....	Pounds						Coal.....	Tons		\$.....	\$.....	\$.....
Tongue, Frozen.....	Pounds						Fuel Distribution—KERC					
Total.....				\$ 3,223.28	\$ 3,223.28		Coal.....	Tons	125.00		1,434.35	1,434.35
Commodities Purchased by KERC							Distribution Costs of FSRC					
Beef, Fresh.....	Pounds	15,625	328	\$ 2,343.75	\$ 2,343.75		Coal Paid by KERC.....					
Beef, Canned.....	1½lb Cans	3,465	336	693.00	693.00		Total.....			\$1,434.35	\$.....	\$ 1,434.35
Cod Liver Oil.....	12 oz. Bottles	72	72	36.00	36.00		Grand Total.....			\$1,434.35	\$ 6,677.81	\$ 8,112.16
Eggs.....	Dozen						*Raw Materials Furnished by FSRC. Finished Products Accomplished under Work Projects.					
Flour.....	12lb Sacks						**Materials Furnished for Work Projects from County and Private Funds.					
Grain & Feed.....	Bushels											
Pork, Smoked.....	Pounds											

*Raw Materials Furnished by FSRC. Finished Products Accomplished under Work Projects.

**Materials Furnished for Work Projects from County and Private Funds.

VII—ANALYSIS OF COUNTY ADMINISTRATIVE COSTS—1934

	Non-Relief Payrolls		Relief Payrolls		Equipment Rental	Materials	Other Costs	Total Costs
	Aver. Monthly No. Employed	Earnings	Aver. Monthly No. Employ'd	Earnings				
Administrative Projects								
County Funds.....	3.6	\$ 2,446.50			\$ 314.89	\$ 14.40	\$ 543.80	\$ 3,319.59
Federal Funds.....	4.6	3,458.63	0.5	399.00				3,857.63
Additional Administration—County Funds*	2.0	435.00					98.60	533.60
Supplemental Salaries								
City Funds.....								
Private Funds.....								
Total Costs.....		\$ 6,340.13		\$ 399.00	\$ 314.89	\$ 14.40	\$ 642.40	\$ 7,710.82

*Additional Administration January through March 31.



VIII—ANALYSIS OF CIVIL WORKS ADMINISTRATION PROJECTS FOR THE ENTIRE PERIOD, NOVEMBER 17, 1933, THROUGH JUNE 30, 1934

Sponsor	Description of Project	FEDERAL FUNDS				SPONSORS' CONTRIBUTIONS				DISTRIBUTION OF COSTS				
		CWA Payrolls		Purchase Orders		Wages	Team-Truck Equip. Exp.	Materials	Other Costs	Federal Funds	Local Funds	Gr'd Total Expenditures		
		Wages	Team-Truck Equip. Exp.	Team-Truck Equip. Exp.	Materials									
Cities														
City of Goodland.....	Street Improvement.....	\$ 628.03	\$.....	\$.....	\$.....	\$ 73.23	\$.....	\$.....	\$.....	\$ 628.03	\$ 73.23	\$ 701.26		
City of Kanorado.....	Street Improvement.....	2,208.78	766.85	54.65	44.00	253.38	408.75	3,030.28	706.13	3,736.41		
City of Goodland.....	Const. Municipal Golf Course.....	3,169.55	252.00	194.45	434.20	33.29	3,616.00	467.49	4,083.49		
City of Goodland.....	Public Utility Improvement.....	178.40	343.56	1.50	19.80	521.96	21.30	543.26		
City of Goodland.....	Public Utility Improvement.....	1,451.40	787.25	1,451.40	787.25	2,238.65		
City of Goodland.....	Sewer Improvement.....	875.70	24.00	875.70	24.00	899.70		
Total City Projects.....		\$ 8,511.86	\$1,018.85	\$.....	\$ 592.66	\$.....	\$ 552.93	\$1,117.72	\$ 408.75	\$10,125.37	\$ 2,079.40	\$12,202.77		
Townships														
State Line Township.....	Road Improvement.....	\$ 658.40	\$ 879.66	\$.....	\$.....	\$.....	\$.....	\$ 255.70	\$ 102.50	\$ 1,538.06	\$ 358.20	\$ 1,896.26		
Total Township Projects.....		\$ 658.40	\$ 879.66	\$.....	\$.....	\$.....	\$.....	\$ 255.70	\$ 102.50	\$ 1,538.06	\$ 358.20	\$ 1,896.26		
County														
Sherman County.....	Roads.....	\$ 8,810.60	\$.....	\$ 362.50	\$.....	\$.....	\$ 113.45	\$ 18.90	\$ 572.27	\$ 9,173.10	\$ 704.62	\$ 9,877.72		
Sherman County.....	Local CWA Office.....	1,029.75	444.59	501.70	1,029.75	946.29	1,976.04		
Sherman County.....	Re-employment Office.....	1,053.83	225.09	90.25	1,053.83	315.34	1,369.17		
Sherman County.....	Improve Fairgrounds.....	99.50	193.00	5.04	3.60	13.50	292.50	22.14	314.64		
Total County Projects.....		\$10,973.68	\$.....	\$ 362.50	\$ 193.00	\$.....	\$ 788.17	\$ 22.50	\$1,177.72	\$11,529.18	\$ 1,988.39	\$13,517.57		
State & Federal														
State.....	Roads.....	\$ 4,820.60	\$1,994.26	\$.....	\$ 568.00	\$.....	\$1,628.30	\$ 302.82	\$ 220.52	\$ 7,382.86	\$ 2,151.64	\$ 9,534.50		
State.....	Compensation.....	35.33	35.33	35.33		
Federal.....	Airport.....	8,608.75	3,232.00	7,309.28	412.28	455.86	6,938.70	19,150.03	7,806.84	26,956.87		
Federal.....	Farm Mortgages & Land Values.....	491.40	491.40	491.40		
Total State & Federal Projects.....		\$13,956.08	\$5,226.26	\$.....	\$7,877.28	\$.....	\$2,040.58	\$ 758.68	\$7,159.22	\$27,059.62	\$ 9,958.48	\$37,018.10		
Grand Total.....		\$34,100.02	\$7,124.77	\$ 362.50	\$8,662.94	\$.....	\$3,381.68	\$2,154.60	\$8,848.19	\$50,250.23	\$14,384.47	\$64,634.70		

IX—CIVIL WORKS ADMINISTRATION—EMPLOYMENT, MAN HOURS, AND WAGES FOR THE ENTIRE PERIOD, NOVEMBER 17, 1933, THROUGH JUNE 30, 1934

Employment Data Covering Work Projects and Tool and Sundry Equipment Projects						Employment Data Covering Administrative Projects			Summary						
All Payrolls Covering Projects Employing Principally Labor			All Payrolls Covering Drivers of Their Own Teams, Trucks and Other Mechanical Equipment			Payrolls on Project Employing Chiefly State & Local Administrative & Cler. Wkrs			Total State & Local Administrative Proj. Employees		Total Earnings, Wages, Salaries and Hire		Accident Compensation		Grand Total
Average Weekly No. of Employees	Total Man Hours Worked	Total Wages Earned	Average Weekly No. of Employees	Total Hours Worked	Total Earnings Wages-Hire	Average Weekly No. of E'pl'es	Salaries and Wages Earned	Average Salaries and Wages Earned	No. of Employees	Weekly Average	Total	Average Weekly Wage	Average Number Men	Total Amount	
Sherman County.....															
Total 1933.....	157.0	27,249	1.8	326	\$ 283.92	5.2	\$ 441.25	164.0	\$12,230.81	\$12.43	0.1	\$.....	\$12,230.81
Total.....	151.1	43,323	18.7	5,664	6,605.57	1.8	519.00	5.8	1,465.80	177.4	28,050.87	12.16	0.1	35.33	28,086.20
First 3 Mo. 1934.....	45.1	7,854	0.8	157	233.25	0.7	168.03	0.6	83.20	5.9	907.78	11.94	907.78
Second 3 Mo. 1934.....	3.8	784	0.8	157	233.25	0.7	168.03	0.6	83.20	5.9	907.78	11.94	907.78
Total.....	92.4	71,356	8.3	6,147	37,122.74	1.0	3687.93	3.5	\$1,990.25	105.2	\$41,189.46	\$12.24	0.1	\$35.33	\$41,224.79



SMITH COUNTY

649

Board of County Commissioners—A. C. McCall, Chairman, Lebanon; Julius Beckman, Gaylord; George Windscheffel, Athol.

County Emergency Relief Committee—A. L. Headley, Chairman, Smith Center; E. I. Seavey, Kensington; P. E. Derge, Lebanon; George Windscheffel, Athol; Julius Beckman, Gaylord.

County Poor Commissioner and Supervisor of Work Program—Roy D. Hutchins; County Case Supervisor—None approved at this time (December, 1934).

Assessed Valuation—\$20,883,182 (March 1, 1934); Bonded Indebtedness—\$15,000 (October 1, 1934); Population—13,052 (March, 1934); Total Population on Relief—2,578; Per Cent—19.8 (December, 1934).

EXPENDITURES FOR RELIEF AND CWA FROM ALL SOURCES, 1934*			
	Relief Program	CWA Program	Total
Total County Funds.....	\$ 20,214.83	\$ 1,156.75	\$ 21,371.58
Total Township Funds.....	242.75	565.30	808.05
Total City Funds.....	528.80	255.65	784.45
Total Privately Raised Funds.....	693.11	693.11	1,386.22
Total State Funds.....	3,167.00	3,167.00	6,334.00
Total Federal Funds.....	68,604.86	35,658.03	104,262.89
Total.....	\$ 93,451.35	\$ 35,241.58	\$ 128,692.93

EXPENDITURES FOR RELIEF AND CWA FROM ALL SOURCES, 1924-1933*			
	Relief Program	CWA Program	Total
Total County Funds.....	\$147,676.04	\$.....	\$147,676.04
Total Private Funds.....	5,500.00	5,500.00	11,000.00
Total City Funds.....	19,677.17	7,411.88	27,089.05
Total Federal Funds.....	\$172,853.21	\$ 7,411.88	\$180,265.09

*Excludes All Non-relief Obligations Except Payrolls.

WORK RELIEF AND CWA, OCTOBER, 1932, THROUGH DECEMBER, 1934

Because scarcity of water was one of the greatest problems in Smith county during the drought of 1934, both from the standpoint of livestock needs and human consumption, the emergency water conservation program begun in July, was one of the most beneficial means of providing relief, according to local officials. Practically all towns in the county suffered a shortage of water in the summer of 1934. Thirteen community wells were dug in various parts of the county which permitted farmers to keep livestock they otherwise would have been forced to ship. Eight emergency pumping plants were set up, 14 wells were dug, and 35 farm ponds were constructed to alleviate water shortages.

Road work here, as in most counties, provided considerable employment for relief labor during the CWA and work relief programs, October, 1932, through December, 1934. By the close of 1934, 17 miles of state highway had been graded, 54 miles of county and township roads had been surfaced, 43 miles graded, and 126 miles otherwise repaired. In Smith Center, Lebanon, Bellaire, Gaylord, Athol, Kensington, and Cedar some 240 blocks of city streets were improved. Eight bridges and large culverts were constructed and 23 small culverts were built in connection with road improvements. Public building improvements included repairs on the city hall and library at Smith Center and four rural high schools at Smith Center, Kensington, Athol, and Harlan. Outstanding work was done on the Smith Center high school grounds, according to reports from the county officials. More than a mile and a half of water main was extended at Smith Center and river improvement work was done along the Solomon river. Women work relief clients were employed in the sewing rooms at Smith Center and Lebanon, and during 1934 these workers made or remade some 15,000 garments for later distribution as surplus commodities.

Because of the continued drought all crops failed in 1934, causing a condition which necessitated shipping out of the county 13,000 head of cattle purchased by the government together with about 5,000 head which were sold through the regular channels; approximately 1,000 died from starvation. Farm employment was at a standstill after August 1, and all laborers were forced on the relief rolls, the local relief administration reports.

I—ANALYSIS OF ALL RELIEF GRANTED FROM FEDERAL, LOCAL PUBLIC, AND PRIVATE WELFARE AGENCY FUNDS—1934

ITEMS	RESIDENT FAMILIES				RESIDENT SINGLES				RESIDENT TOTAL		TRANSIENTS		GRAND TOTAL
	Aver. Mo. No. Cases	Aver. Mo. No. Persons Rept.	Amount	Aver. Mo. Relief Per Case	Aver. Mo. No. Cases	Amount	Aver. Mo. Relief Per Case	Aver. Mo. No. Cases	Amount	Aver. Mo. Relief Per Case	Actual No. Persons	Amount	All Relief Granted
Section A—Work and Direct Relief													
Approved Work Projects													
Federal Funds.....	232.8	1,013.8	\$ 48,678.00	\$ 17.43	12.5	\$ 1,407.60	\$ 9.38	245.3	\$ 50,085.60	\$ 17.01		\$.....	\$ 50,085.60
County Funds.....													
Total.....	232.8	1,013.8	\$ 48,678.00	\$ 17.43	12.5	\$ 1,407.60	\$ 9.38	245.3	\$ 50,085.60	\$ 17.01		\$.....	\$ 50,085.60
Additional County Projects	2.0	9.0	126.81	5.28	1.2	61.90	4.13	3.2	188.71	4.97	11	29.78	218.49
Total Work Relief.....	234.8	1,022.8	\$ 48,804.81	\$ 17.32	13.7	\$ 1,469.50	\$ 8.96	248.5	\$ 50,274.31	\$ 16.86	11	\$ 29.78	\$ 50,304.09
Direct Relief													
County Funds.....	46.7	199.5	\$ 6,773.91	\$ 12.10	14.9	\$ 1,319.88	\$ 7.37	61.6	\$ 8,093.79	\$ 10.95	142	\$ 196.34	\$ 8,290.13
Federal Funds.....													
Garden Seed.....			46.00						46.00				46.00
Fuel Distribution.....			211.80						211.80				211.80
Total.....	46.7	199.5	\$ 7,031.71	\$.....	14.9	\$ 1,319.88	\$.....	61.6	\$ 8,351.59	\$.....	142	\$ 196.34	\$ 8,547.93
Total Work & Direct Relief	281.5	1,222.3	\$ 55,836.52	\$.....	28.6	\$ 2,789.38	\$.....	310.1	\$ 58,625.90	\$.....	153	\$ 226.12	\$ 58,852.02
Less Duplicated Cases.....	11.3	54.3			0.7			12.0					
Net Total, Section A.....	270.2	1,168.0	\$ 55,836.52	\$.....	27.9	\$ 2,789.38	\$.....	298.1	\$ 58,625.90	\$.....	153	\$ 226.12	\$ 58,852.02
Section B—Special Programs													
Federal Grants in Aid													
Emergency Educ. Pro. 1.....													
College Student Pro. 1.....													
Homestead Rehabilitation.....	39.8	197.4	\$ 5,847.67	\$ 29.39				39.8	\$ 5,847.67	\$ 29.39			\$ 5,847.67
Civil Works Service.....													
Total Section B.....	39.8	197.4	\$ 5,847.67	\$.....				39.8	\$ 5,847.67	\$.....			\$ 5,847.67
Section C—Other Relief from County Funds													
Poor Farm.....					7.7	\$ 822.11	\$ 8.94	7.7	\$ 822.11	\$ 8.94			\$ 822.11
Hospitalization.....	2.8	11.3	\$ 2,018.24	\$ 61.16				2.8	\$ 2,018.24	\$ 61.16			\$ 2,018.24
Other Institutions.....	2.8	3.3	\$ 884.20	\$ 26.79				2.8	\$ 884.20	\$ 26.79			\$ 884.20
Pensions.....	5.2	6.2	\$ 980.00	\$ 15.81				5.2	\$ 980.00	\$ 15.81			\$ 980.00
Mothers' Aid.....													
Crippled Children.....	3.1	14.1	\$ 1,362.24	\$ 36.82				3.1	\$ 1,362.24	\$ 36.82			\$ 1,362.24
All Other (Burials, etc.).....	1.1	4.5	\$ 567.00	\$ 43.62				1.1	\$ 567.00	\$ 43.62			\$ 567.00
Total Section C.....	15.0	39.4	\$ 5,811.68	\$ 32.29	7.7	\$ 822.11	\$ 8.94	22.7	\$ 6,633.79	\$ 24.39			\$ 6,633.79
Section D—Relief from Private Agencies													
Red Cross.....	16.3	81.3	\$ 80.00	\$.41				16.3	\$ 80.00	\$.41			\$ 80.00
Religious Organizations.....													
Fraternal Clubs.....	2.3	17.3	\$ 345.00	\$ 12.78				2.3	\$ 345.00	\$ 12.78			\$ 345.00
Community Chest.....	1.3	7.1	\$ 79.41	\$ 5.29				1.3	\$ 79.41	\$ 5.29			\$ 79.41
Associated Charities.....													
Welfare Boards.....													
Salvation Army.....													
Parent-Teachers Assn.....													
Other Agencies.....													
Total Section D.....	19.8	105.5	\$ 504.41	\$ 2.13				19.8	\$ 504.41	\$ 2.13			\$ 504.41
Section E—Relief from City Funds													
Total Sections A to E, Incl.	344.8	1,510.3	\$ 68,000.28	\$.....	35.6	\$ 3,611.49	\$.....	380.4	\$ 71,611.77	\$.....	153	\$ 226.12	\$ 71,837.89
Section F—Surp. Commodities—Est. Val.													
Commodities Granted by:													
Fed. Surplus Relief Corp.....			\$ 3,407.64	\$.....					\$ 3,407.64	\$.....			\$ 3,407.64
Kansas Emer. Relief Com.....			\$ 3,241.33	\$.....					\$ 3,241.33	\$.....			\$ 3,241.33
Fuel Granted by:													
Fed. Surplus Relief Corp.....			136.11	\$.....					136.11	\$.....			136.11
Total Section F.....			\$ 6,785.08	\$.....					\$ 6,785.08	\$.....			\$ 6,785.08
Grand Total All Relief			\$ 74,785.36	\$.....		\$ 3,611.49	\$.....		\$ 78,396.85	\$.....		\$ 226.12	\$ 78,622.97

*Cases Included in Schedule III. †Cases Included in Schedule VI. ‡Case Averages Based on Actual Number of Months Program Was in Operation.



650

SMITH COUNTY

II—SUMMARY OF ALL OBLIGATIONS INCURRED FOR RELIEF AND THE WORK RELIEF PROGRAM FOR YEAR 1934 AND CIVIL WORKS ADMINISTRATION FROM NOVEMBER 17, 1933, THROUGH JUNE 30, 1934

Consolidated Statement of All Obligations for These Purposes Against Federal, State, Local Public, Private and Private Welfare Agency Funds

ITEMS	Federal Funds	County Funds	City Funds	Township Funds	School Funds	Private Funds	Total Funds	State Funds	Private Agy. Funds	Grand Total All Funds
Section A										
Work Relief—Wages on Approved Projects	\$ 50,085.60						\$ 50,085.60			\$ 50,085.60
Section B										
Non-Relief Obligations—Work Relief Pro.										
Materials										
Aggregate Materials & Stone	\$ 274.50	\$ 95.18	\$ 420.05		\$ 71.50	\$ 258.25	\$ 1,119.48	\$ 70.00		\$ 1,189.48
Cement	1,441.75	24.00			184.20		1,649.95			1,649.95
Bituminous Materials										
Petroleum Products										
Iron & Steel	487.13				11.00		498.13	728.60		1,226.73
Clay Products	4,225.75				9.00		4,234.75			4,234.75
Lumber	360.00				24.00		384.00	590.95		974.95
Plumbing & Heating	18.50				25.00		43.50			43.50
Hardware	32.21				4.00		36.21	25.16		61.37
Explosives										
Paint & Paint Materials					165.15		165.15	11.50		176.65
Total Materials	\$ 6,839.84	\$ 119.18	\$ 420.05		\$ 493.85	\$ 258.25	\$ 8,131.17	\$ 1,426.21		\$ 9,557.38
Team, Truck, & Equipment Expense										
Equipment Parts & Supplies	\$ 987.63	\$ 15.00					\$ 1,002.63			\$ 1,002.63
Office Supplies & Equipment	4,360.30	157.22					4,517.52			4,517.52
Rental of Equipment		11,999.20	226.90		60.90	491.50	12,377.50	5,027.19		17,404.69
Total Team, Truck, & Equip. Exp.	\$ 5,347.93	\$ 12,171.42	\$ 226.90		\$ 60.90	\$ 491.50	\$ 18,298.65	\$ 5,027.19		\$ 23,325.84
Other Costs										
Tools		\$ 99.53					\$ 99.53			\$ 99.53
Rental of Premises		27.99					27.99			27.99
Other Services	527.60	269.34					796.94			796.94
Miscellaneous	195.24	212.13			18.00		425.37			425.37
Total Other Costs	\$ 722.84	\$ 612.99			\$ 18.00		\$ 1,353.83			\$ 1,353.83
Wages & Salaries	\$ 5,628.71	\$ 4,916.42	\$ 242.75		\$ 528.80	\$ 188.70	\$ 11,505.38	\$ 3,167.00		\$ 14,672.38
Total Non-Relief Obligations	\$ 18,539.32	\$ 17,820.01	\$ 889.70		\$ 1,101.55	\$ 938.45	\$ 39,289.03	\$ 9,620.40		\$ 48,909.43
Total Sections A & B	\$ 68,624.92	\$ 17,820.01	\$ 889.70		\$ 1,101.55	\$ 938.45	\$ 89,374.63	\$ 9,620.40		\$ 98,995.03
Section C										
Additional County Work Relief	\$ 218.49						\$ 218.49			\$ 218.49
Direct Relief	257.80	8,290.13					8,547.93			8,547.93
Admin. Costs Prior to Admin. Projects		156.00					156.00			156.00
Wages & Salaries		248.30					248.30			248.30
Total Section C	\$ 257.80	\$ 8,912.92					\$ 9,170.72			\$ 9,170.72
Section D										
Relief from Special Programs	\$ 5,847.67						\$ 5,847.67			\$ 5,847.67
Other Relief from County Funds		6,633.79					6,633.79			6,633.79
Other Relief from City Funds										
Relief from Private Welfare Agency Funds								504.41		504.41
Surplus Commodities & Fuel—Est. Value	6,785.08						6,785.08			6,785.08
Supplemental Administrative Salaries										
Total Section D	\$ 12,632.75	\$ 6,633.79					\$ 19,266.54		\$ 504.41	\$ 19,770.95
Grand Total Sections A to D, Incl.	\$ 81,515.47	\$ 33,366.72	\$ 889.70		\$ 1,101.55	\$ 938.45	\$ 117,811.89	\$ 9,620.40	\$ 504.41	\$ 127,936.70
Section E										
Civil Works Administration										
Work Projects										
Payrolls	\$ 41,172.31	\$ 1,156.75	\$ 605.85	\$ 565.30	\$ 255.65		\$ 43,755.86			\$ 43,755.86
Other Costs	1,475.39	18,183.61	2,257.24	2,286.72	699.30		24,902.26	3,017.17		27,919.43
Total	\$ 42,647.70	\$ 19,340.36	\$ 2,863.09	\$ 2,852.02	\$ 954.95		\$ 68,658.12	\$ 3,017.17		\$ 71,675.29
Administration										
Payrolls	\$ 1,897.60						\$ 1,897.60			\$ 1,897.60
Other Costs		140.05					140.05			140.05
Total	\$ 1,897.60	\$ 140.05					\$ 2,037.65			\$ 2,037.65
Total Civil Works Administration	\$ 44,545.30	\$ 19,480.41	\$ 2,863.09	\$ 2,852.02	\$ 954.95		\$ 70,695.77	\$ 3,017.17		\$ 73,712.94
Grand Total	\$ 126,060.77	\$ 52,847.13	\$ 3,752.79	\$ 2,852.02	\$ 2,056.50		\$ 188,507.66	\$ 12,637.57	\$ 504.41	\$ 201,649.64

III—MONTHLY RECORD OF RESIDENT CASES SHOWING APPLICATIONS RECEIVED, CASES OPENED, ACTIVE AND INACTIVE CASES, AND CASES CLOSED FOR YEAR 1934

	Cases at Beginning of Mo.	Applications Rec'd	Total Cases Opened	New Cases Opened	Old Cases Re-Opened	Total Mo. Case Load	Cases Rec'd Relief	*Cases Homest'd Rehab. Project	Cases Received No Relief	Total Cases Closed	Cases Closed Because Employ't	Cases Closed Other Reasons	Cases Open End of Mo.	Cases Active End of Month	Cases Inactive End of Month
January	58	19	19	18	1	77	75	...	2	2	2	...	75	74	1
February	75	24	24	17	7	99	69	...	30	30	2	...	69	69	...
March	69	17	17	2	15	86	78	...	8	8	2	...	78	78	...
April	78	184	156	11	145	234	164	...	70	4	4	...	230	164	66
May	230	35	15	5	10	245	214	...	31	5	...	5	240	214	26
June	240	40	32	17	15	272	191	...	81	36	2	34	236	191	45
July	236	235	116	104	12	352	295	...	57	3	...	3	340	295	45
August	349	380	213	207	6	562	479	23	83	20	4	16	542	479	63
September	542	176	86	56	30	628	496	37	132	30	13	17	598	496	102
October	598	133	39	26	13	637	508	37	129	9	7	2	628	508	120
November	628	147	47	13	34	675	570	48	105	2	1	1	673	570	103
December	673	62	64	60	4	737	630	54	107	3	1	2	734	630	104

*Included in Cases Receiving Relief.

SMITH COUNTY



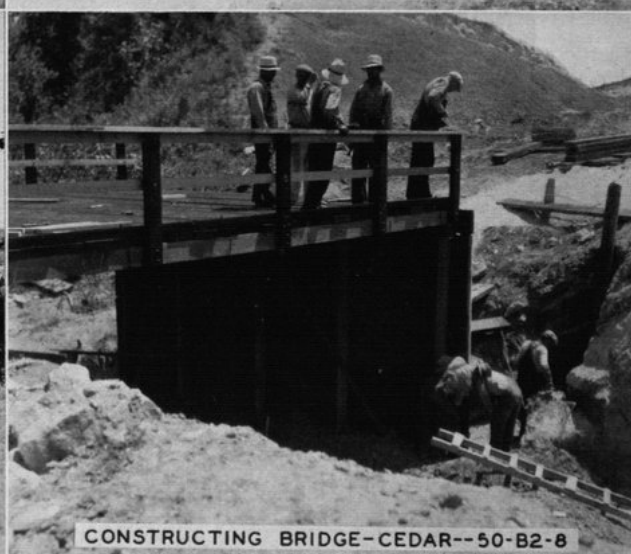
STADIUM-SMITH CENTER HIGH SCHL--50-B4-5



ROAD & HILL CUT-GAYLORD--50-B2-8



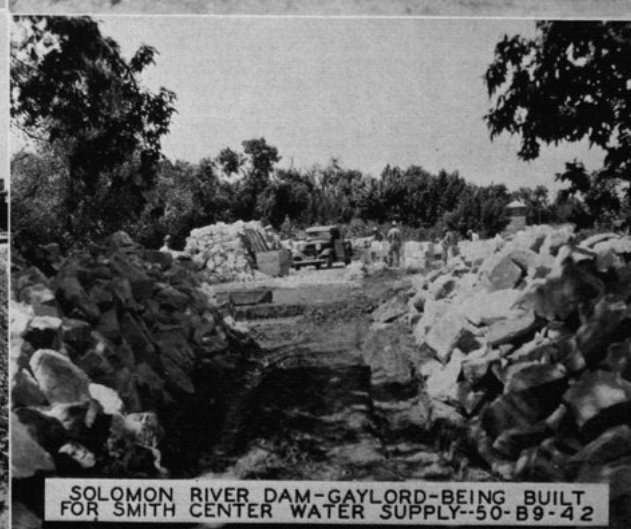
FARM POND-NE. OF PORTIS--50-E9-26



CONSTRUCTING BRIDGE-CEDAR--50-B2-8



WELL-NORTH OF LEBANON--50-B9-41



SOLOMON RIVER DAM-GAYLORD-BEING BUILT
FOR SMITH CENTER WATER SUPPLY-50-B9-42



IV—ANALYSIS OF PAYMENTS IN CASH OR IN KIND FOR ALL RELIEF GRANTED FROM FEDERAL, LOCAL PUBLIC, AND PRIVATE WELFARE AGENCY FUNDS—1934

Source of Funds	Total Relief Extended	Payments in Cash	Payments For Which Type Not Defined	Payments in Kind	ANALYSIS OF PAYMENTS IN KIND									
					Food and Household Necessities	Shelter	Clothing	Fuel	Public Utilities	Medical Care	Institutional Care	Subsistence Crops	Feed for Stock	All Other
January—Federal.....	\$ 139.30	\$.....	\$.....	\$ 139.30	\$ 139.30	\$.....	\$.....	\$.....	\$.....	\$.....	\$.....	\$.....	\$.....	\$.....
County.....	1,376.45	98.90	1,277.55	290.03	105.75	36.33	58.27	562.04	125.13	100.00
City.....	48.16	48.16
Private Agencies.....	1,563.91	98.90	48.16	1,416.85	429.33	105.75	36.33	58.27	562.04	125.13	100.00
February—Federal.....	\$ 22.00	\$.....	\$.....	\$ 22.00	\$ 22.00	\$.....	\$.....	\$.....	\$.....	\$.....	\$.....	\$.....	\$.....	\$.....
County.....	1,614.08	145.36	1,469.32	455.29	111.50	29.62	4.26	1.50	686.61	147.54	55.00
City.....	44.50	44.50
Private Agencies.....	1,681.18	145.36	44.50	1,491.32	455.29	111.50	29.62	4.26	1.50	686.61	147.54	55.00
March—Federal.....	\$ 599.58	\$.....	\$.....	\$ 599.58	\$ 553.58	\$.....	\$.....	\$.....	\$.....	\$.....	\$.....	\$.....	\$.....	\$.....
County.....	1,544.52	239.72	1,304.80	374.20	94.60	11.95	22.30	586.62	163.20	46.00	51.93
City.....	47.50	47.50
Private Agencies.....	2,191.60	239.72	47.50	1,904.38	927.78	94.60	11.95	22.30	586.62	163.20	46.00	51.93
April—Federal.....	\$ 1,140.03	\$ 484.10	\$.....	\$ 655.93	\$ 308.02	\$.....	\$.....	\$.....	\$.....	\$.....	\$.....	\$.....	\$.....	\$.....
County.....	1,695.52	217.98	1,477.54	477.11	136.77	35.69	347.91	723.86	69.11	35.00
City.....	27.30	27.30
Private Agencies.....	2,862.85	702.08	27.30	2,133.47	785.13	136.77	35.69	347.91	723.86	69.11	35.00
May—Federal.....	\$ 2,598.14	\$ 2,310.00	\$.....	\$ 288.14	\$ 288.14	\$.....	\$.....	\$.....	\$.....	\$.....	\$.....	\$.....	\$.....	\$.....
County.....	1,688.57	68.00	1,620.57	299.28	74.85	27.73	15.68	3.75	962.69	131.33	20	105.06
City.....	46.00	46.00
Private Agencies.....	4,332.71	2,378.00	46.00	1,908.71	587.42	74.85	27.73	15.68	3.75	962.69	131.33	20	105.06
June—Federal.....	\$ 2,106.90	\$ 2,065.20	\$.....	\$ 41.70	\$ 37.75	\$.....	\$.....	\$.....	\$.....	\$.....	\$.....	\$.....	\$.....	\$.....
County.....	1,115.53	116.00	999.53	277.14	52.25	11.12	4.00	390.55	176.22	88.25
City.....	25.00	25.00
Private Agencies.....	3,247.43	2,181.20	25.00	1,041.23	314.89	52.25	15.07	4.00	390.55	176.22	88.25
July—Federal.....	\$ 4,040.30	\$ 4,037.10	\$.....	\$ 3.20	\$.....	\$.....	\$.....	\$.....	\$.....	\$.....	\$.....	\$.....	\$.....	\$.....
County.....	1,320.82	147.05	1,173.77	184.06	30.25	4.42	6.89	6.31	536.57	316.87	88.40
City.....	25.00	25.00
Private Agencies.....	5,386.12	4,184.15	25.00	1,176.97	184.06	30.25	7.62	6.89	6.31	536.57	316.87	88.40
August—Federal.....	\$ 9,025.75	\$ 8,843.20	\$.....	\$ 182.55	\$ 112.75	\$.....	\$.....	\$.....	\$.....	\$.....	\$.....	\$.....	\$.....	\$.....
County.....	1,049.32	68.00	981.32	206.60	37.00	32.16	10.84	.50	359.78	242.82	10	91.52
City.....	50.00	50.00
Private Agencies.....	10,125.07	8,911.20	50.00	1,163.87	319.35	37.00	101.96	10.84	.50	359.78	242.82	10	91.52
September—Federal.....	\$ 9,299.81	\$ 8,216.31	\$.....	\$ 1,083.50	\$ 1,023.75	\$.....	\$.....	\$.....	\$.....	\$.....	\$.....	\$.....	\$.....	\$.....
County.....	988.91	116.00	872.91	230.61	27.00	96	7.31	.50	473.60	97.93	35.00
City.....	25.00	25.00
Private Agencies.....	10,313.72	8,332.31	25.00	1,956.41	1,254.36	27.00	60.71	7.31	.50	473.60	97.93	35.00
October—Federal.....	\$ 7,227.78	\$ 6,546.55	\$.....	\$ 681.23	\$ 606.00	\$.....	\$.....	\$.....	\$.....	\$.....	\$.....	\$.....	\$.....	\$.....
County.....	1,004.96	68.00	936.96	198.08	36.64	16.69	6.20	8.10	534.78	19.88er	156.35
City.....	55.35	55.35
Private Agencies.....	8,288.09	6,614.55	55.35	1,618.19	804.08	36.64	91.92	6.20	8.10	534.78	19.88er	156.35
November—Federal.....	\$ 13,244.14	\$ 11,812.59	\$.....	\$ 1,431.55	\$ 1,369.00	\$.....	\$.....	\$.....	\$.....	\$.....	\$.....	\$.....	\$.....	\$.....
County.....	638.33	64.00	574.33	143.18	37.17	4.01	3.96	405.23	75.22er	56.00
City.....	53.75	53.75
Private Agencies.....	13,936.22	11,876.59	53.75	2,005.88	1,512.18	37.17	66.56	3.96	405.23	75.22er	56.00
December—Federal.....	\$ 13,532.42	\$ 11,618.22	\$.....	\$ 1,914.20	\$ 1,680.45	\$.....	\$.....	\$.....	\$.....	\$.....	\$.....	\$.....	\$.....	\$.....
County.....	1,104.80	112.00	992.80	201.28	37.50	18.17	4.25	305.34	331.26	95.00
City.....	56.85	56.85
Private Agencies.....	14,694.07	11,730.22	56.85	2,907.00	1,881.73	37.50	233.75	18.17	4.25	305.34	331.26	95.00
Year 1934—Federal.....	\$ 62,976.15*	\$ 55,933.27	\$.....	\$ 7,042.88*	\$ 6,140.74	\$.....	\$.....	\$.....	\$.....	\$.....	\$.....	\$.....	\$.....	\$.....
County.....	15,142.41	1,461.01	13,681.40	3,314.86	781.28	210.68	157.88	24.91	6,527.67	1,705.31	30	957.51
City.....	504.41	504.41
Private Agencies.....	78,622.97*	57,394.28	504.41	20,724.28*	9,455.60	781.28	718.91	595.79	24.91	6,527.67	1,706.31	46.30	957.51

*Includes \$6,785.80 Estimated Valuation Surplus Commodities.



SMITH COUNTY

653

V—ANALYSIS OF WORK RELIEF PROGRAM BY PROJECT—January 1, through December 31, 1934

Sponsor	Description of Project	Wages & Salaries		Team, Truck & Equip.		Materials	Other Costs	Distribution of Costs			Total Costs
		Relief	Non-Relief	Relief	Non-Relief			Federal Funds	State Funds	Local Contributions	
Cities											
Gaylord	Repair*, Reconst.—Roads, etc.	\$ 312.60	\$ 34.50					\$ 312.60		\$ 34.50	\$ 347.10
Athol	Repair, Reconst.—Roads, etc.	127.80	27.00					127.80		27.00	154.80
Cedar	Repair, Reconst.—Roads, etc.	1,656.90	30.00			12.50		1,656.90		42.50	1,699.40
Kensington	Repair, Reconst.—Roads, etc.	1,811.10	102.50			65.50		1,876.60		329.40	2,206.00
Smith Center	Repair, Reconst.—Pub. Util.	213.60	48.75			407.55		213.60		456.30	669.90
Lebanon	Wells (Emergency)	31.50			1,043.78			1,075.28			1,075.28
Total City Projects		\$ 4,153.50	\$ 242.75		\$ 1,270.68	\$ 485.55		\$ 5,262.78		\$ 889.70	\$ 6,152.48
Townships											
Harlan	Repair, Reconst.—Roads, etc.	\$ 1,283.40	\$ 188.70		\$ 491.50	\$ 258.25		\$ 1,283.40		\$ 938.45	\$ 2,221.85
Total Township Projects		\$ 1,283.40	\$ 188.70		\$ 491.50	\$ 258.25		\$ 1,283.40		\$ 938.45	\$ 2,221.85
Schools											
Sch. Dist. No. 141-Rep., Reconst.—Pub. Bldgs.		\$ 390.60	\$ 34.70		\$ 17.80	\$ 119.90		\$ 390.60		\$ 172.40	\$ 563.00
High School, Smith Center—Repair, Reconst.—Pub. Bldgs.		538.80	347.50		12.10	34.25	18.00	538.80		411.85	950.65
City Schools, Athol—Repair, Reconst.—Pub. Bldgs.		261.60	61.60			59.00		261.60		120.60	382.20
City Schools, Harlan—Repair, Reconst.—Pub. Bldgs.		555.60	85.00		31.00	280.70		555.60		396.70	952.30
Total School Projects		\$ 1,746.60	\$ 528.80		\$ 60.90	\$ 493.85	\$ 18.00	\$ 1,746.60		\$ 1,101.55	\$ 2,848.15
County											
Smith County											
Repair, Reconst.—Roads, etc.		\$20,204.10	\$ 3,078.05	\$ 600.00	\$14,132.48	\$ 930.46	\$ 55.36	\$23,921.18		\$ 15,079.27	\$ 39,000.45
Wells (Emergency)		7,890.60	399.00	265.50	2,005.82	5,963.06		16,516.51		7.47	16,523.98
Eng. for Water Conservation Program			1,905.49				527.60	2,433.09			2,433.09
Prod. & Dis. Gds. for Needy (Clothing)		3,953.40	509.50				435.20	4,148.64		749.46	4,898.10
Public Welfare (Nursing)		55.20						55.20			55.20
Pub. Educ., Arts, & Res. (Clerical)			168.00								168.00
Pub. Educ., Arts, & Res. (Clerical)		71.00			15.45		42.66	71.00		58.11	129.11
Administrative Projects		771.90	4,009.75		321.82		275.01	3,452.78		1,925.70	5,378.48
Total County Projects		\$32,946.20	\$10,069.79	\$ 865.50	\$16,475.57	\$ 6,893.52	\$ 1,335.83	\$ 50,766.40		\$ 17,820.01	\$ 68,586.41
State & Federal											
State, Planning Project		\$ 4,183.80		\$ 175.50				\$ 4,359.30			\$ 4,359.30
State, Repair, Reconst.—Highways, etc.		3,246.60	3,167.00		5,027.19	1,426.21		3,246.60	9,620.40		12,867.00
Fed. Hous. Adm., to Determine Number of Houses Needing Repair		420.00	288.00					708.00			708.00
State, Feed, Ship, & Adm. of Cattle Pro.		835.50	121.34					956.84			956.84
St. Bd. Hlth., Collect. & Class. Vital Stat.		30.00						30.00			30.00
State, School Recreational Survey		99.00						99.00			99.00
State, Personnel for Local Re-employ. Offices		100.00						100.00			100.00
State, Child Health Program		66.00						66.00			66.00
Total State & Federal Projects		\$ 8,914.90	\$ 3,642.34	\$ 175.50	\$ 5,027.19	\$ 1,426.21		\$ 9,565.74	\$ 9,620.40		\$ 19,186.14
Grand Total		\$49,044.60	\$14,672.38	\$ 1,041.00	\$23,325.84	\$ 9,557.38	\$ 1,353.83	\$ 68,624.92	\$ 9,620.40	\$ 20,749.71	\$ 98,995.03

*Repair Does Not Include Maintenance.

VI—DISTRIBUTION OF COMMODITIES SUPPLIED BY FSRC AND KERC FOR THE YEAR 1934

Max. Relief Cases						Max. Relief Cases					
Unit of Measure	Amount Distributed	in Any 1 Mo.	Actual Costs	Estimated Valuation	Total	Unit of Measure	Amount Distributed	in Any 1 Mo.	Actual Costs	Estimated Valuation	Total
Commodities Furnished by FSRC						Commodities Furnished by FSRC					
Apples			\$	\$	\$	Sausage	Pounds		\$	\$	\$
Beef, Fresh						Soup, Canned	Cans				
Beef, Canned	1½lb Cans	7,075	449	1,768.75	1,768.75	Mattresses*		66	38	660.00	660.00
Blankets						Comforts*					
Butter	Pounds	2,400	563	600.00	600.00	Pillow Cases*					
Cheese	Pounds					Sheet*					
Flour	24lb Sacks	138	60	138.00	138.00	New Garments**		480	74	379.38	379.38
Grain & Feed	Bushels					Old Garments**		239	39	128.85	128.85
Lard	Pounds	300	150	27.00	27.00	Total			\$	\$ 3,241.33	\$ 3,241.33
Milkwheat-O	Pounds					Total Commodities			\$	\$ 6,648.97	\$ 6,648.97
Pork, Salt	Pounds					Fuel Distribution—FSRC					
Pork, Smoked	Pounds	4,717	268	801.89	801.89	Coal	Tons	28.00		\$ 136.11	\$ 136.11
Rice	Pounds	1,200	442	72.00	72.00	Fuel Distribution—KERC					
Sugar	Pounds					Coal	Tons	21.00		155.80	155.80
Tongue, Frozen	Pounds					Gas					
Total				\$ 3,407.64	\$ 3,407.64	Distribution Costs of FSRC					
Commodities Purchased by KERC						Distribution Costs of FSRC					
Beef, Fresh	Pounds	2,546	170	\$ 381.90	\$ 381.90	Coal Paid by KERC				56.00	56.00
Beef, Canned	1½lb Cans	8,456	569	1,691.20	1,691.20	Total			\$ 211.80	\$ 136.11	\$ 347.91
Cod Liver Oil	12 oz. Bottles					Grand Total			\$ 211.80	\$ 6,785.08	\$ 6,996.88
Eggs	Dozen					*Raw Materials Furnished by FSRC. Finished Products Accomplished under Work Projects					
Flour	12lb Sacks					**Materials Furnished for Work Projects from County and Private Funds.					
Grain & Feed	Bushels										
Pork, Smoked	Pounds										

*Raw Materials Furnished by FSRC. Finished Products Accomplished under Work Projects.
**Materials Furnished for Work Projects from County and Private Funds.

VII—ANALYSIS OF COUNTY ADMINISTRATIVE COSTS—1934

	Non-Relief Payrolls		Relief Payrolls		Equipment Rental	Materials	Other Costs	Total Costs
	Aver. Monthly No. Employed	Earnings	Aver. Monthly No. Emp'd	Earnings				
Administrative Projects								
County Funds	3.3	\$ 1,328.87						\$ 1,328.87
Federal Funds	4.4	2,680.88	3.0	771.90	\$ 321.82		\$ 275.01	\$ 3,452.78
Additional Administration—County Funds*	1.7	156.00					248.30	404.30
Supplemental Salaries								
City Funds								
Private Funds								
Total Costs		\$ 4,165.75		\$ 771.90	\$ 321.82		\$ 523.31	\$ 5,782.78

*Additional Administration January through March 31.



VIII—ANALYSIS OF CIVIL WORKS ADMINISTRATION PROJECTS FOR THE ENTIRE PERIOD, NOVEMBER 17, 1933, THROUGH JUNE 30, 1934

Sponsor	Description of Project	FEDERAL FUNDS				SPONSORS' CONTRIBUTIONS				DISTRIBUTION OF COSTS		
		CWA Payrolls		Purchase Orders		Wages		Materials		Federal Funds	Local Funds	Gr'd Total Expenditure
		Wages	Team-Truck Equip. Exp.	Team-Truck Equip. Exp.	Materials	Wages	Team-Truck Equip. Exp.	Materials	Other Costs			
Cities												
City of Atchison.....	Street Improvement.....	\$ 417.60	\$ 600.66	\$	\$	\$ 38.50	\$ 216.90	\$ 102.70	\$	\$ 1,018.26	\$ 350.10	\$ 1,374.36
City of Cedar.....	Street Improvement.....	108.00	342.00	40.00	12.00	20.60	450.00	72.60	522.60
City of Gaylord.....	Street Improvement.....	859.65	87.00	44.00	77.90	850.65	208.90	1,059.55
City of Lebanon.....	Street Improvement.....	1,747.80	1,235.08	80.50	251.00	339.40	2,082.88	670.90	2,753.78
City of Smith Center.....	Street Improvement.....	1,018.80	1,805.18	215.35	201.50	270.90	2,623.98	687.75	3,311.73
City of Smith Center.....	Building Improvement.....	545.80	64.00	2.00	292.34	545.80	358.34	904.14
City of Kensington.....	Public Utility Improvement.....	708.75	52.50	14.00	71.00	708.75	107.50	816.25
City of Smith Center.....	Public Utility Improvement.....	188.35	30.00	341.00	188.35	371.00	559.35
Total City Projects.....		\$ 5,514.75	\$ 3,782.92	\$	\$	\$ 605.85	\$ 741.40	\$1,515.84	\$	\$ 9,377.67	\$ 2,863.09	\$12,240.76
Townships												
Blaine Township.....	Street Improvement.....	\$ 335.60	\$ 436.70	\$	\$	\$ 44.25	\$ 24.00	\$ 38.40	\$	\$ 772.30	\$ 106.65	\$ 878.95
Center Township.....	Road Improvement.....	1,299.20	265.60	116.50	709.20	282.00	1,564.80	1,107.70	2,672.50
Garfield Township.....	Road Improvement.....	198.00	495.00	48.00	210.00	693.00	258.00	951.00
Harlan Township.....	Road Improvement.....	1,953.20	334.40	108.00	239.00	76.00	2,287.60	423.00	2,710.60
Houston Township.....	Road Improvement.....	643.15	99.90	63.75	82.25	745.05	146.00	891.05
Lincoln Township.....	Road Improvement.....	963.60	82.00	221.25	12.28	963.60	315.53	1,279.13
Martin Township.....	Road Improvement.....	115.20	154.55	42.00	78.00	269.75	120.00	389.75
Logan Township.....	Road Improvement.....	172.80	462.55	60.80	169.65	144.69	625.35	375.14	1,000.49
Total Township Projects.....		\$ 5,682.75	\$ 2,238.70	\$	\$	\$ 565.30	\$ 1,733.35	\$ 553.37	\$	\$ 7,921.45	\$ 2,852.02	\$10,773.47
Schools												
School Dist. No. 4, Smith Center, Ground Improvement.....		\$ 1,107.75	\$ 717.88	\$	\$	\$ 255.65	\$ 8.00	\$ 505.45	\$	\$ 1,825.63	\$ 769.10	\$ 2,594.73
School Dist. No. 141, Kensington, Bldg. & Ground Imp.....		411.00	162.10	185.85	573.10	185.85	758.95
Total School Projects.....		\$ 1,518.75	\$ 879.98	\$	\$	\$ 255.65	\$ 8.00	\$ 691.30	\$	\$ 2,398.73	\$ 954.95	\$ 3,353.68
County												
Smith County.....	Roads.....	\$10,973.90	\$ 3,304.69	\$	\$1,412.80	\$1,156.75	\$16,266.40	\$1,556.09	\$	\$15,691.39	\$18,079.24	\$34,670.63
Smith County.....	Local CWA Office.....	897.80	42.00	98.05	897.80	1,037.85
Smith County.....	Poor Relief.....	128.00	51.20	128.00	179.20
Smith County.....	Re-employment Office.....	1,393.87	54.00	255.92	1,393.87	1,703.79
Total County Projects.....		\$13,393.57	\$ 3,304.69	\$	\$1,412.80	\$1,156.75	\$16,362.40	\$1,556.09	\$ 405.17	\$18,111.06	\$19,480.41	\$37,591.47
State & Federal												
State.....	Roads.....	\$ 2,684.15	\$ 763.10	\$	\$	\$ 695.92	\$ 974.08	\$1,251.33	\$ 95.84	\$ 3,447.25	\$ 3,017.17	\$ 6,464.42
State.....	Compensation.....	55.65	55.65	55.65
State.....	Sign Boards.....	198.00	47.20	245.20	245.20
Federal.....	Survey Farm Housing.....	2,346.50	15.30	2,361.80	2,361.80
Federal.....	Farm Mortgage & Land Use.....	626.40	626.40	626.40
Total State & Federal Projects.....		\$ 5,910.70	\$ 763.10	\$	\$ 62.50	\$ 695.92	\$ 974.08	\$1,251.33	\$ 95.84	\$ 6,736.39	\$ 3,017.17	\$ 9,753.56
Grand Total.....		\$31,109.52	\$10,969.39	\$	\$1,475.39	\$3,279.47	\$19,819.23	\$5,567.93	\$ 501.01	\$44,545.36	\$29,167.64	\$73,712.94

IX—CIVIL WORKS ADMINISTRATION—EMPLOYMENT, MAN HOURS, AND WAGES FOR THE ENTIRE PERIOD, NOVEMBER 17, 1933, THROUGH JUNE 30, 1934

Employment Data Covering Work Projects and Tool and Sundry Equipment Projects					Employment Data Covering Administrative Projects					Summary				
All Payrolls Covering Projects Employing Principally Labor			All Payrolls Covering Drivers of Their Own Teams, Trucks and Other Mechanical Equipment			Payrolls on Project Employing Chiefly Professional & Cler. Wk'rs			Payrolls for Employees of State & Local Administrative Proj.			Total Earnings, Wages, Salaries, and Hire		
Average Weekly No. of Employees	Total Man Hours Worked	Total Wages Earned	Average Weekly No. of Employees	Total Hours Worked	Total Earnings Wages-Hire	Average Weekly No. of Employees	Salaries and Wages Earned		Average Weekly No. of Employees	Salaries and Wages Earned		Average Weekly Wage	Average Number Men	Total Amount
Smith County														
Total 1933.....	100.8	13,677	\$ 5,627.60	9.7	1,235	\$ 1,378.18	0.1	\$ 18.00	4.5	\$ 388.10	115.1	\$ 7,411.88	\$10.73	\$ 7,411.88
Total.....
First 3 Mo. 1934.....	218.9	49,377	21,079.55	44.8	9,672	9,466.01	11.7	2,875.40	6.2	1,437.70	281.6	34,858.66	9.52	34,897.06
Second 3 Mo. 1934.....	6.3	1,039	417.05	1.1	175	125.20	0.7	129.67	0.5	71.80	8.6	743.72	6.70	760.97
Total.....	110.4	64,093	\$27,124.20	20.4	11,082	\$10,969.39	5.1	\$3,023.07	3.6	\$1,897.60	139.5	\$43,014.26	\$ 9.64	\$43,069.91



STAFFORD COUNTY

655

Board of County Commissioners—A. E. Bock, Chairman, Macksville; D. F. Gates, Seward; Perry Mather, Stafford.

County Emergency Relief Committee—Benjamin E. Evans, Chairman, Stafford; John D. Stewart, St. John; S. G. Wiles, Macksville; D. F. Gates, Seward; Perry Mather, Stafford.

County Poor Commissioner—Leslie L. Broadbooks; County Case Supervisor—Lucille Caswell; Supervisor of Work Program—Walter M. Titus (December, 1934).

Assessed Valuation—\$22,013,239 (March 1, 1934); Bonded Indebtedness—None (October 1, 1934); Population—10,168 (March, 1934); Total Population on Relief—1,382; Per Cent—13.6 (December, 1934).

EXPENDITURES FOR RELIEF AND CWA FROM ALL SOURCES, 1934*

	Relief Program	CWA Program	Total
Total County Funds.....	\$ 17,986.62	\$.....	\$ 17,986.62
Total Township Funds.....	117.55	117.55
Total City Funds.....	839.10	136.00	975.10
Total School Funds.....	28.80	28.80
Total Privately Raised Funds.....	1,347.35	1,347.35
Total State Funds.....	58.48	58.48
Total Federal Funds.....	39,431.03	29,727.67	69,158.70
Total.....	\$ 59,808.93	\$ 29,863.67	\$ 89,672.60

EXPENDITURES FOR RELIEF AND CWA FROM ALL SOURCES, 1924-1933*

	Relief Program	CWA Program	Total
Total County Funds.....	\$136,036.63	\$.....	\$136,036.63
Total Private Funds.....	1,285.72	1,285.72
Total City Funds.....	9,468.30	9,468.30
Total Federal Funds.....	4,577.72	13,192.67	17,770.39
Total.....	\$151,368.37	\$ 13,192.67	\$164,561.04

*Excludes All Non-relief Obligations Except Payrolls.

WORK RELIEF AND CWA, OCTOBER, 1932, THROUGH DECEMBER, 1934

Stafford county provided work for relief clients throughout the county work relief and CWA programs, October, 1932, through December, 1934, principally on two kinds of projects, the improvement of county and township roads and the repair and reconstruction of public buildings and parks. In all, approximately 210 miles of roads and 209 blocks of city streets in Stafford, Hudson, Macksville, and St. John were improved in some way. Fifteen miles of roads were surfaced, 162 graded, and the remainder otherwise repaired or reconstructed. Nine small culverts were constructed in connection with the road work.

The county courthouse and the municipal building, both at St. John, underwent repairs as did nine rooms in schoolhouses at St. John and Hudson and three rooms in another public building. Grounds at a school in Stafford were improved. General repairs were made on the electric light systems in St. John and Radium and the water plant at St. John. Three hundred fifty feet of water main was laid, and six miles of transmission line strung from St. John to Radium. A white way was built in St. John, and a ditch a mile long was dug to supplement storm sewers. Sanitation improvements included the building of three-fourths of a mile of sanitary sewer and the installation of 122 community sanitation units and six septic tanks.

Parks at Macksville and Stafford were improved along with school playgrounds and athletic fields at Hudson, Stafford, St. John, and Macksville. Work also was done on the cemeteries at St. John, Stafford, and Macksville. These improvements involved work on a total area of 80 acres. Only four ponds, two garden and two farm ponds, were constructed in the county under the water conservation program.

Sewing rooms located at Stafford and St. John produced a total of 5,153 garments. Failure of the principal crops, wheat and corn, and lack of any industrial employment forced citizens in increased number to accept relief. The corn and wheat allotments made available to the county prevented relief rolls from increasing even more rapidly, the county relief administration reports. The outstanding development in public welfare service is believed to be the organization of a competent relief administration which is able to administer relief adequately and to provide simultaneously projects of permanent value to the community.

I—ANALYSIS OF ALL RELIEF GRANTED FROM FEDERAL, LOCAL PUBLIC, AND PRIVATE WELFARE AGENCY FUNDS—1934

ITEMS	RESIDENT FAMILIES				RESIDENT SINGLES			RESIDENT TOTAL			TRANSIENTS		GRAND TOTAL
	Aver. Mo. No. Cases	Aver. Mo. No. Persons Rept.	Amount	Aver. Mo. No. Per Case	Aver. Mo. No. Cases	Amount	Aver. Mo. No. Per Case	Aver. Mo. No. Cases	Amount	Aver. Mo. No. Per Case	Actual No. Persons	Amount	All Relief Granted
Section A—Work and Direct Relief													
Approved Work Projects													
Federal Funds.....	113.2	518.8	\$ 27,306.60	\$ 20.11	1.3	\$ 169.00	\$ 10.56	114.5	\$ 27,475.60	\$ 20.00	\$.....	\$ 27,475.60
County Funds.....													
Total.....	113.2	518.8	\$ 27,306.60	\$ 20.11	1.3	\$ 169.00	\$ 10.56	114.5	\$ 27,475.60	\$ 20.00	\$.....	\$ 27,475.60
Additional County Projects													
Total Work Relief.....	113.2	518.8	\$ 27,306.60	\$ 20.11	1.3	\$ 169.00	\$ 10.56	114.5	\$ 27,475.60	\$ 20.00	\$.....	\$ 27,475.60
Direct Relief													
County Funds.....	66.6	305.6	\$ 7,640.20	\$ 9.56	19.3	\$ 1,782.22	\$ 7.68	85.9	\$ 9,422.42	\$ 9.14	73	\$ 86.24	\$ 9,508.66
Federal Funds.....													
Garden Seed.....			72.00						72.00				72.00
Fuel Distribution.....													
Total.....	66.6	305.6	\$ 7,712.20		19.3	\$ 1,782.22		85.9	\$ 9,494.42		73	\$ 86.24	\$ 9,580.66
Total Work & Direct Relief	179.8	824.4	\$ 35,018.80		20.6	\$ 1,951.22		200.4	\$ 36,970.02		73	\$ 86.24	\$ 37,056.26
Less Duplicated Cases.....	21.7	106.2			0.6			22.3					
Net Total, Section A.....	158.1	718.2	\$ 35,018.80		20.0	\$ 1,951.22		178.1	\$ 36,970.02		73	\$ 86.24	\$ 37,056.26
Section B—Special Programs													
Federal Grants in Aid													
Emergency Educ. Pro.			\$.....	\$.....	3.5	\$ 384.75	\$ 25.65	3.5	\$ 384.75	\$ 25.65	\$.....	\$ 384.75
College Student Pro.													
Homestead Rehabilitation.....													
Civil Works Service.....					1.0	120.00	60.00	1.0	120.00	60.00		120.00
Total Section B.....			\$.....	\$.....	4.5	\$ 504.75		4.5	\$ 504.75			\$ 504.75
Section C—Other Relief from County Funds													
Poor Farm.....			\$.....	\$.....	4.8	\$ 1,933.65	\$ 33.34	4.8	\$ 1,933.65	\$ 33.34	\$.....	\$ 1,933.65
Hospitalization.....	2.6	3.3	1,178.85	38.03				2.6	1,178.85	38.03			1,178.85
Other Institutions.....	4.1	4.1	1,155.19	23.58				4.1	1,155.19	23.58			1,155.19
Pensions.....	4.1	4.5	330.60	6.75				4.1	330.60	6.75			330.60
Mothers' Aid.....	11.4	38.4	985.74	7.20				11.4	985.74	7.20			985.74
Crippled Children.....	1.1	1.1	263.20	20.25				1.1	263.20	20.25			263.20
All Other (Burials, etc.)....	0.8	0.8	591.00	59.10				0.8	591.00	59.10			591.00
Total Section C.....	24.1	52.2	\$ 4,504.58	\$ 15.58	4.8	\$ 1,933.65	\$ 33.34	28.9	\$ 6,438.23	\$ 18.56		\$ 6,438.23
Section D—Relief from Private Agencies													
Red Cross.....	20.2	104.1	\$ 684.55	\$ 2.83				20.2	\$ 684.55	\$ 2.83		\$ 684.55
Religious Organizations.....													
Fraternal Clubs.....	3.0	3.0	435.00	12.08				3.0	435.00	12.08			435.00
Community Chest.....													
Associated Charities.....													
Welfare Boards.....													
Salvation Army.....													
Parent-Teachers Assn.....													
Other Agencies.....	2.9	10.0	130.00	3.71				2.9	130.00	3.71			130.00
Total Section D.....	26.1	117.1	\$ 1,249.55	\$ 3.99				26.1	\$ 1,249.55	\$ 3.99		\$ 1,249.55
Section E—Relief from City Funds													
Total Sections A to E, Incl.....	208.3	88.75	\$ 40,772.93		29.3	\$ 4,389.62		237.6	\$ 45,162.55		73	\$ 86.24	\$ 45,248.79
Section F—Surp. Commodities—Est. Val.													
Commodities Granted by†													
Fed. Surplus Relief Corp.....			\$ 2,779.17						\$ 2,779.17				\$ 2,779.17
Kansas Emer. Relief Com.....			4,358.21						4,358.21				4,358.21
Fuel Granted by†													
Fed. Surplus Relief Corp.....													
Total Section F.....			\$ 7,137.38						\$ 7,137.38				\$ 7,137.38
Grand Total All Relief			\$ 47,910.31			\$ 4,389.62			\$ 52,299.93			\$ 86.24	\$ 52,386.17

*Cases Included in Schedule III. †Cases Included in Schedule VI. ‡Case Averages Based on Actual Number of Months Program Was in Operation.



656

STAFFORD COUNTY

II—SUMMARY OF ALL OBLIGATIONS INCURRED FOR RELIEF AND THE WORK RELIEF PROGRAM FOR YEAR 1934 AND CIVIL WORKS ADMINISTRATION FROM NOVEMBER 17, 1933, THROUGH JUNE 30, 1934

Consolidated Statement of All Obligations for These Purposes Against Federal, State, Local Public, Private and Private Welfare Agency Funds

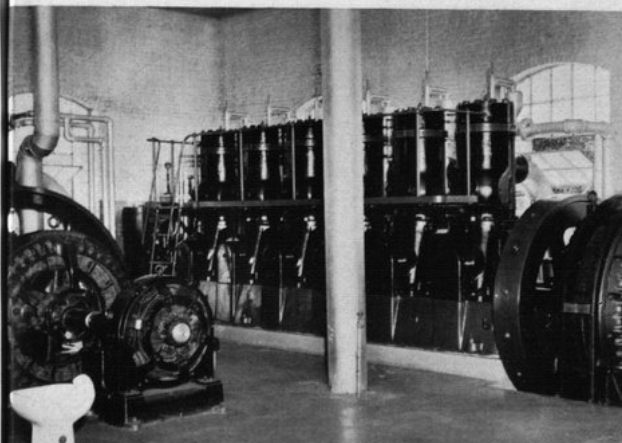
ITEMS	Federal Funds	County Funds	City Funds	Township Funds	School Funds	Private Funds	Total Funds	State Funds	Private Agy. Funds	Grand Total All Funds
Section A										
Work Relief—Wages on Approved Projects	\$ 27,475.60						\$ 27,475.60			\$ 27,475.60
Section B										
Non-Relief Obligations—Work Relief Pro.										
Materials										
Aggregate Materials & Stone	\$ 46.75		\$ 296.80		\$ 2.00	\$ 34.73	\$ 380.28			\$ 380.28
Cement	98.30		514.17		18.60	295.12	926.19			926.19
Bituminous Materials	1.80						1.80			1.80
Petroleum Products										
Iron & Steel	59.08		377.15	50.04		18.04	504.31			504.31
Clay Products						44.14	44.14			44.14
Lumber	110.35		1,252.44		18.00	128.55	1,509.34			1,509.34
Plumbing & Heating	48.50		776.76		25.00	86.32	936.58			936.58
Hardware	5.86		405.74		31.00	116.46	559.06			559.06
Explosives										
Paint & Paint Materials	276.30		3.10		6.00	15.62	301.02			301.02
Total Materials	\$ 646.94		\$ 3,626.16	\$ 50.04	\$ 100.60	\$ 738.98	\$ 5,162.72			\$ 5,162.72
Team, Truck, & Equipment Expense										
Equipment Parts & Supplies	\$ 26.70						\$ 26.70			\$ 26.70
Office Supplies & Equipment		36.00	30.00				66.00			66.00
Rental of Equipment		211.20	197.40	84.85	33.30		526.75			526.75
Total Team, Truck, & Equip. Exp.	\$ 26.70	\$ 247.20	\$ 227.40	\$ 84.85	\$ 33.30		\$ 619.45			\$ 619.45
Other Costs										
Tools		\$ 64.96					\$ 64.96			\$ 64.96
Rental of Premises		240.00					240.00			240.00
Other Services	119.90	482.49				106.00	707.39	200.04		907.43
Other Charges										
Miscellaneous	425.44	64.13	1,864.34			119.54	2,473.45			2,473.45
Total Other Costs	\$ 545.34	\$ 851.58	\$ 1,864.34			\$ 224.54	\$ 3,485.80	\$ 200.04		\$ 3,685.84
Wages & Salaries	\$ 4,241.30	\$ 1,739.73	\$ 839.10	\$ 117.55	\$ 28.80	\$ 97.80	\$ 7,064.28	\$ 58.48		\$ 7,122.76
Total Non-Relief Obligations	\$ 5,460.28	\$ 2,838.51	\$ 6,557.00	\$ 252.44	\$ 162.70	\$ 1,061.32	\$ 16,332.25	\$ 258.52		\$ 16,590.77
Total Sections A & B	\$ 32,935.88	\$ 2,838.51	\$ 6,557.00	\$ 252.44	\$ 162.70	\$ 1,061.32	\$ 43,807.85	\$ 258.52		\$ 44,066.37
Section C										
Additional County Work Relief										
Direct Relief	\$ 72.00	\$ 9,508.66					\$ 9,580.66			\$ 9,580.66
Admin. Costs Prior to Admin. Projects										
Wages & Salaries		300.00					300.00			300.00
Other Costs		60.00					60.00			60.00
Total		\$ 360.00					\$ 360.00			\$ 360.00
Total Section C	\$ 72.00	\$ 9,868.66					\$ 9,940.66			\$ 9,940.66
Section D										
Relief from Special Programs	\$ 504.75						\$ 504.75			\$ 504.75
Other Relief from County Funds		\$ 6,438.23					\$ 6,438.23			\$ 6,438.23
Other Relief from City Funds										
Relief from Private Welfare Agency Funds									\$ 1,249.55	\$ 1,249.55
Surplus Commodities & Fuel—Est. Value										
Supplemental Administrative Salaries										
Total Section D	\$ 7,642.13	\$ 6,438.23					\$ 14,080.36		\$ 1,249.55	\$ 15,329.91
Grand Total Sections A to D, Incl.	\$ 40,650.01	\$ 19,145.40	\$ 6,557.00	\$ 252.44	\$ 162.70	\$ 1,061.32	\$ 67,828.87	\$ 258.52	\$ 1,249.55	\$ 69,336.94
Section E										
Civil Works Administration										
Work Projects										
Payrolls	\$ 41,012.34		\$ 136.00				\$ 41,148.34			\$ 41,148.34
Other Costs	193.13	\$ 3,611.93	\$ 8,760.39		\$ 353.21		\$ 12,918.66			\$ 12,918.66
Total	\$ 41,205.47	\$ 3,611.93	\$ 8,896.39		\$ 353.21		\$ 54,067.00			\$ 54,067.00
Administration										
Payrolls	\$ 1,908.00						\$ 1,908.00			\$ 1,908.00
Other Costs		314.86					314.86			314.86
Total	\$ 1,908.00	\$ 314.86					\$ 2,222.86			\$ 2,222.86
Total Civil Works Administration	\$ 43,113.47	\$ 3,926.79	\$ 8,896.39		\$ 353.21		\$ 56,289.86			\$ 56,289.86
Grand Total	\$ 83,763.48	\$ 23,072.19	\$ 15,453.39	\$ 252.44	\$ 515.91	\$ 1,061.32	\$ 124,118.73	\$ 258.52	\$ 1,249.55	\$ 125,626.80

III—MONTHLY RECORD OF RESIDENT CASES SHOWING APPLICATIONS RECEIVED, CASES OPENED, ACTIVE AND INACTIVE CASES, AND CASES CLOSED FOR YEAR 1934

	Cases at Beginning of Mo.	Applications Rec'd	Total Cases Opened	New Cases Opened	Old Cases Re-Opened	Total Mo. Case Load	Cases Rec'd R-Relief	*Cases Hermet'd Rehab. Pre-ject	Cases Received No Relief	Total Cases Closed	Cases Closed Because Employ't	Cases Closed Other Reasons	Cases Open End of Mo.	Cases Active End of Month	Cases Inactive End of Month
January	30	57	57	15	42	87	86	...	1	12	8	4	75	75	...
February	75	20	20	9	11	95	95	22	19	3	73	73	...
March	73	7	7	5	2	80	80	23	18	5	57	57	...
April	57	141	141	104	37	198	198	22	19	3	176	176	...
May	176	176	143	...	33	38	35	3	138	138	...
June	138	3	...	2	1	140	133	...	7	84	78	6	56	56	...
July	56	94	88	7	81	144	144	11	5	6	133	133	...
August	133	66	53	18	35	186	186	39	15	24	147	147	...
September	147	98	70	29	41	217	216	...	1	10	4	6	207	207	...
October	207	28	28	15	13	235	235	31	29	2	204	204	...
November	204	98	95	78	17	299	299	3	3	...	296	296	...
December	296	41	27	22	5	323	323	5	3	2	318	318	...

*Included in Cases Receiving Relief.

STAFFORD COUNTY



LIGHT PLANT REMODELED-ST. JOHN--59-B10-15



CHILDREN'S SECTION-ST. JOHN CITY LIBRARY--59-D5-50

REMODELING LIGHT PLANT AND CITY HALL

The light plant at St. John (upper left) was enlarged to permit the installation of a new 420 horsepower engine. The brick partition was moved back 20 feet, and a base for the new engine, 32 feet by 8 feet, was constructed.

Repair and improvement of the city hall at St. John (lower right) included alterations which also covered remodeling and construction of shelves, magazine cases, and furniture for the library (upper right) in the same building.

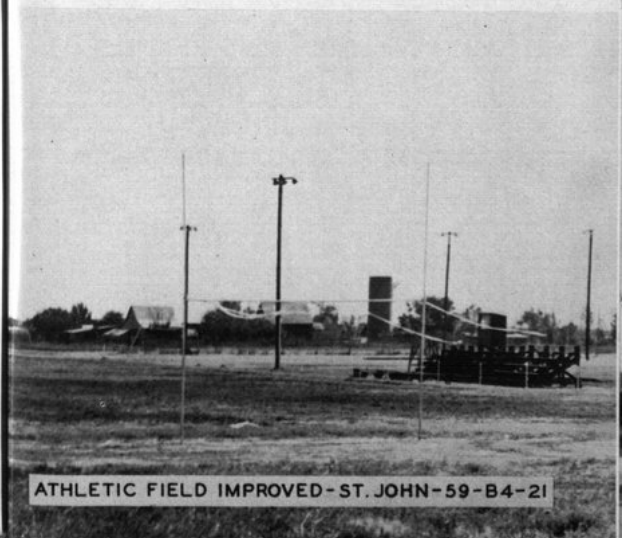
FARM POND AND ATHLETIC FIELD

This farm pond (center right) was built for a relief client by county work relief laborers; four frescoes and one plow were required to complete the work. A concrete mixer was rented to prepare materials for the dam.

The athletic field at St. John was cleaned and disced on a work relief project, and a wire fence was built around the playing field. Two-inch iron pipe was used for posts. Ten laborers and two teams were utilized on this project.



NON-RELIEF FARM POND-ST. JOHN--59-E10-25



ATHLETIC FIELD IMPROVED-ST. JOHN-59-B4-21



CITY HALL REMODELED-ST. JOHN--59-B4-5



IV—ANALYSIS OF PAYMENTS IN CASH OR IN KIND FOR ALL RELIEF GRANTED FROM FEDERAL, LOCAL PUBLIC, AND PRIVATE WELFARE AGENCY FUNDS—1934

ANALYSIS OF PAYMENTS IN KIND															
Source of Funds	Total Relief Extended	Payments in Cash	Payments For Which Type Not Defined	Payments in Kind	Food and Household Necessities	Shelter	Clothing	Fuel	Public Utilities	Medical Care	Institutional Care	Subsistence Crops	Feed for Stock	All Other	
January—Federal.....	\$ 1,001.74	\$ 60.00	\$ 941.74	\$ 101.74	\$ 101.74	\$ 26.00	\$ 17.96	\$ 148.90	\$	\$ 123.37	\$ 168.63	\$	\$ 750.00	\$ 129.13	
County.....	1,150.07	70.00	1,080.07	466.08	466.08										
City.....	245.87		245.87												
Private Agencies.....	2,397.68	130.00	2,457.87	2,021.81	657.82	26.00	17.96	148.90		\$ 123.37	\$ 168.63	\$	\$ 750.00	\$ 129.13	
Total.....	\$ 2,397.68	\$ 130.00	\$ 2,457.87	\$ 2,021.81	\$ 657.82	\$ 26.00	\$ 17.96	\$ 148.90	\$	\$ 123.37	\$ 168.63	\$	\$ 750.00	\$ 129.13	
February—Federal.....	\$ 286.30	\$ 159.50	\$ 126.80	\$ 126.80	\$ 126.80	\$ 45.00		\$ 147.20	\$	\$ 397.92	\$ 147.20	\$	\$	\$ 7.37	
County.....	1,293.46	85.55	1,207.91	463.22	463.22										
City.....	178.89		178.89												
Private Agencies.....	1,758.65	245.05	1,789.80	1,334.71	590.02	45.00		\$ 147.20	\$	\$ 397.92	\$ 147.20	\$	\$	\$ 7.37	
Total.....	\$ 1,758.65	\$ 245.05	\$ 1,789.80	\$ 1,334.71	\$ 590.02	\$ 45.00		\$ 147.20	\$	\$ 397.92	\$ 147.20	\$	\$	\$ 7.37	
March—Federal.....	\$ 1,937.70	\$ 187.00	\$ 1,750.70	\$ 391.20	\$ 391.20	\$ 42.00	\$ 10.14	\$ 121.87	\$	\$ 427.44	\$ 197.50	\$ 72.00	\$1,287.50	\$ 5.89	
County.....	1,352.27	77.00	1,275.27	470.43	470.43										
City.....	190.74		190.74												
Private Agencies.....	3,480.71	264.00	3,025.97	861.63	861.63	42.00	10.14	121.87	\$	\$ 427.44	\$ 197.50	\$ 72.00	\$1,287.50	\$ 5.89	
Total.....	\$ 3,480.71	\$ 264.00	\$ 3,025.97	\$ 861.63	\$ 861.63	\$ 42.00	\$ 10.14	\$ 121.87	\$	\$ 427.44	\$ 197.50	\$ 72.00	\$1,287.50	\$ 5.89	
April—Federal.....	\$ 2,351.55	\$ 1,601.55	\$ 750.00	\$ 447.26	\$ 447.26	\$ 28.00	\$ 1.88	\$ 136.94	\$ 1.70	\$ 574.49	\$ 252.70	\$	\$ 750.00	\$ 37.88	
County.....	1,557.85	77.00	1,480.85	447.26	447.26										
City.....	86.15		86.15												
Private Agencies.....	3,995.55	1,678.55	86.15	2,230.85	447.26	28.00	1.88	136.94	\$ 1.70	\$ 574.49	\$ 252.70	\$	\$ 750.00	\$ 37.88	
Total.....	\$ 3,995.55	\$ 1,678.55	\$ 86.15	\$ 2,230.85	\$ 447.26	\$ 28.00	\$ 1.88	\$ 136.94	\$ 1.70	\$ 574.49	\$ 252.70	\$	\$ 750.00	\$ 37.88	
May—Federal.....	\$ 3,011.63	\$ 2,746.80	\$ 264.83	\$ 264.83	\$ 264.83	\$ 33.00	\$ 81.74	\$ 37.37	\$ 85	\$ 560.47	\$ 329.70	\$	\$ 1.20	\$ 60.00	
County.....	1,607.60	123.50	1,484.10	579.77	579.77										
City.....	50.97		50.97												
Private Agencies.....	4,670.20	2,870.30	50.97	1,748.93	644.60	33.00	81.74	37.37	\$ 85	\$ 560.47	\$ 329.70	\$	\$ 1.20	\$ 60.00	
Total.....	\$ 4,670.20	\$ 2,870.30	\$ 50.97	\$ 1,748.93	\$ 644.60	\$ 33.00	\$ 81.74	\$ 37.37	\$ 85	\$ 560.47	\$ 329.70	\$	\$ 1.20	\$ 60.00	
June—Federal.....	\$ 1,080.80	\$ 127.95	\$ 952.85	\$ 229.17	\$ 229.17	\$ 18.75	\$ 14.80	\$ 27.31	\$ 85	\$ 398.24	\$ 247.36	\$	\$ 9.00	\$ 7.37	
County.....	39.09		39.09												
City.....	2,781.50	1,512.85	39.09	1,229.56	505.88	18.75	14.80	27.31	\$ 85	\$ 398.24	\$ 247.36	\$	\$ 9.00	\$ 7.37	
Private Agencies.....	2,803.16	2,402.20	400.96	400.96	400.96	15.00	3.68	25.32	\$ 85	\$ 324.20	\$ 276.11	\$	\$	\$ 65.06	
Total.....	\$ 2,781.50	\$ 1,512.85	\$ 39.09	\$ 1,229.56	\$ 505.88	\$ 18.75	\$ 14.80	\$ 27.31	\$ 85	\$ 398.24	\$ 247.36	\$	\$ 9.00	\$ 7.37	
July—Federal.....	\$ 2,803.16	\$ 2,402.20	\$ 400.96	\$ 400.96	\$ 400.96	\$ 15.00	\$ 3.68	\$ 25.32	\$ 85	\$ 324.20	\$ 276.11	\$	\$	\$ 65.06	
County.....	1,141.71	118.50	1,023.21	312.99	312.99										
City.....	43.55		43.55												
Private Agencies.....	3,988.42	2,520.70	43.55	1,424.17	713.95	15.00	3.68	25.32	\$ 85	\$ 324.20	\$ 276.11	\$	\$	\$ 65.06	
Total.....	\$ 3,988.42	\$ 2,520.70	\$ 43.55	\$ 1,424.17	\$ 713.95	\$ 15.00	\$ 3.68	\$ 25.32	\$ 85	\$ 324.20	\$ 276.11	\$	\$	\$ 65.06	
August—Federal.....	\$ 3,668.75	\$ 3,449.15	\$ 219.60	\$ 219.60	\$ 219.60	\$ 39.75	\$ 21.03	\$ 26.25	\$ 1.70	\$ 212.30	\$ 324.17	\$ 1.80	\$ 104.57		
County.....	1,297.55	118.39	1,179.16	447.59	447.59										
City.....	41.61		41.61												
Private Agencies.....	5,007.91	3,567.54	41.61	1,398.76	667.19	39.75	21.03	26.25	\$ 1.70	\$ 212.30	\$ 324.17	\$ 1.80	\$ 104.57		
Total.....	\$ 5,007.91	\$ 3,567.54	\$ 41.61	\$ 1,398.76	\$ 667.19	\$ 39.75	\$ 21.03	\$ 26.25	\$ 1.70	\$ 212.30	\$ 324.17	\$ 1.80	\$ 104.57		
September—Federal.....	\$ 3,739.00	\$ 3,451.00	\$ 288.00	\$ 288.00	\$ 288.00	\$ 30.00	\$ 64.62	\$ 44.32	\$ 1.79	\$ 286.60	\$ 237.14	\$	\$	\$ 67.70	
County.....	1,360.30	144.00	1,216.30	484.13	484.13										
City.....	43.85		43.85												
Private Agencies.....	5,143.15	3,595.00	43.85	1,504.30	772.13	30.00	64.62	44.32	\$ 1.79	\$ 286.60	\$ 237.14	\$	\$	\$ 67.70	
Total.....	\$ 5,143.15	\$ 3,595.00	\$ 43.85	\$ 1,504.30	\$ 772.13	\$ 30.00	\$ 64.62	\$ 44.32	\$ 1.79	\$ 286.60	\$ 237.14	\$	\$	\$ 67.70	
October—Federal.....	\$ 3,181.00	\$ 2,754.50	\$ 426.50	\$ 168.00	\$ 168.00	\$ 18.00	\$ 258.50	\$ 75.18	\$.94	\$ 81.50	\$ 286.36	\$	\$	\$ 74.22	
County.....	1,226.04	140.50	1,085.54	526.37	526.37										
City.....	49.64		49.64												
Private Agencies.....	4,456.68	2,895.00	49.64	1,512.04	694.37	18.00	281.47	75.18	\$.94	\$ 81.50	\$ 286.36	\$	\$	\$ 74.22	
Total.....	\$ 4,456.68	\$ 2,895.00	\$ 49.64	\$ 1,512.04	\$ 694.37	\$ 18.00	\$ 281.47	\$ 75.18	\$.94	\$ 81.50	\$ 286.36	\$	\$	\$ 74.22	
November—Federal.....	\$ 6,394.35	\$ 5,526.30	\$ 868.05	\$ 868.05	\$ 868.05	\$ 354.15	\$ 287.21	\$ 3.85	\$ 84.55	\$ 332.82	\$ 246.71	\$	\$	\$ 64.75	
County.....	1,255.95	135.50	1,120.45	354.15	354.15										
City.....	82.94		82.94												
Private Agencies.....	7,733.24	5,661.80	82.94	1,988.50	934.99	30.00	291.06	84.55	\$ 3.62	\$ 332.82	\$ 246.71	\$	\$	\$ 64.75	
Total.....	\$ 7,733.24	\$ 5,661.80	\$ 82.94	\$ 1,988.50	\$ 934.99	\$ 30.00	\$ 291.06	\$ 84.55	\$ 3.62	\$ 332.82	\$ 246.71	\$	\$	\$ 64.75	
December—Federal.....	\$ 5,152.94	\$ 4,257.45	\$ 895.49	\$ 895.49	\$ 895.49	\$ 512.54	\$ 382.96	\$ 78.94	\$ 4.23	\$ 446.78	\$ 375.26	\$	\$	\$ 56.68	
County.....	1,623.29	103.50	1,519.79	391.48	391.48										
City.....	196.25		196.25												
Private Agencies.....	6,972.48	4,360.95	196.25	2,415.28	904.02	8.00	461.89	158.42	\$ 4.23	\$ 446.78	\$ 375.26	\$	\$	\$ 56.68	
Total.....	\$ 6,972.48	\$ 4,360.95	\$ 196.25	\$ 2,415.28	\$ 904.02	\$ 8.00	\$ 461.89	\$ 158.42	\$ 4.23	\$ 446.78	\$ 375.26	\$	\$	\$ 56.68	
Year 1934—Federal.....	\$ 33,180.73	\$ 27,960.35	\$ 7,200.38	\$ 3,421.22	\$ 3,421.22	\$ 333.50	\$ 321.61	\$ 1,033.63	\$ 16.53	\$ 4,166.13	\$ 3,088.84	\$ 72.00	\$2,787.50	\$ 12.00	
County.....	15,946.89	1,321.39	14,625.50	4,972.64	4,972.64										
City.....	1,249.55		1,249.55												
Private Agencies.....	52,386.17	29,301.74	21,834.88	8,393.86	8,393.86	333.50	1,250.27	1,033.63	\$ 16.53	\$ 4,166.13	\$ 3,088.84	\$ 72.00	\$2,787.50	\$ 12.00	
Grand Total.....	\$ 52,386.17	\$ 29,301.74	\$ 21,834.88	\$ 8,393.86	\$ 8,393.86	\$ 333.50	\$ 1,250.27	\$ 1,033.63	\$ 16.53	\$ 4,166.13	\$ 3,088.84	\$ 72.00	\$2,787.50	\$ 680.62	

*Includes \$7,137.38 Estimated Valuation Surplus Commodities.

658

STAFFORD COUNTY



STAFFORD COUNTY

659

V—ANALYSIS OF WORK RELIEF PROGRAM BY PROJECT—January 1, through December 31, 1934

Sponsor	Description of Project	Wages & Salaries		Team, Truck & Equip.		Materials	Other Costs	Distribution of Costs			Total Costs
		Relief	Non-Relief	Relief	Non-Relief			Federal Funds	State Funds	Local Contributions	
Cities											
St. John	Repair, Reconst.—Streets, etc.	\$ 1,785.15	\$ 35.00	\$ 62.40	\$ 15.00	\$ 156.79	\$ 35.00	\$ 1,847.55	\$ 85.00	\$ 1,932.55	
Stafford	Repair, Reconst.—Streets, etc.	3,205.65	248.40	13.20	146.40	85.63		3,218.85	551.59	3,770.44	
Hudson	Repair, Reconst.—Streets, etc.	307.90				79.16		307.90	85.63	393.53	
Macksville	Repair, Reconst.—Streets, etc.	2,423.40	119.20	170.00				2,593.40	198.36	2,791.76	
St. John	Repair, Reconst.—Streets, etc.	2,190.30	272.20	176.20	36.00			2,366.50	308.20	2,674.70	
St. John	Repair, Reconst.—Pub. Bldgs.	111.20			30.00	9.28	324.50	111.20	363.78	474.98	
Stafford	New Const.—Pub. Utilities	60.20				179.47		60.20	179.47	239.67	
Radium	New Const.—Pub. Utilities	280.80				1,452.40	1,504.84	280.80	2,957.24	3,238.04	
St. John	New Const.—Pub. Utilities	449.60		72.00		326.21		521.60	326.21	847.81	
St. John	Repair, Reconst.—Pub. Utilities	1,395.80				884.15		1,591.55	688.40	2,279.95	
St. John	Repair, Reconst.—Pub. Utilities	553.00		28.80		285.33		581.80	286.33	868.13	
Macksville	Repair, Reconst.—Recr. Facil.	1,549.80				362.49		1,549.80	362.49	1,912.29	
Macksville	Repair, Reconst.—Cemetery	563.15	164.30	29.40				592.55	164.30	756.85	
St. John	Pub. Educ., Arts, & Res. (Lib.)	172.55	52.80				63.14	172.55	115.94	288.49	
Total City Projects		\$15,048.50	\$ 891.90	\$ 552.00	\$ 227.40	\$ 3,821.91	\$ 1,927.48	\$ 15,795.25	\$ 6,672.94	\$ 22,468.19	
Township											
Seward	Repair, Reconst.—Roads, etc.	\$ 469.35	\$ 94.75	\$ 26.60	\$ 23.50	\$ 50.04		\$ 495.95	\$ 168.29	\$ 664.24	
Douglas	Repair, Reconst.—Roads, etc.	98.70	15.60	23.40	3.75			122.10	19.35	141.45	
Albano	Repair, Reconst.—Roads, etc.	52.50	7.20	9.60	57.60			62.10	64.80	126.90	
Total Township Projects		\$ 620.55	\$ 117.55	\$ 59.60	\$ 84.85	\$ 50.04		\$ 680.15	\$ 252.44	\$ 932.59	
Schools											
Bd. Educ., Dist. No. 22—Repair, Reconst.—Pub. Bldgs.		\$ 541.45				\$ 50.00		\$ 541.45	\$ 50.00	\$ 591.45	
Bd. Educ., St. John—Repair, Reconst.—Pub. Bldgs.		673.30				50.60		673.30	50.60	723.90	
Bd. Educ., Dist. No. 75, Hudson—Repair, Reconst.—Pub. Bldgs.		184.10	28.80		33.30			184.10	62.10	246.20	
Total School Projects		\$ 1,398.85	\$ 28.80	\$ 33.30	\$ 100.60			\$ 1,398.85	\$ 162.70	\$ 1,561.55	
County											
Stafford County											
Repair, Reconst.—Pub. Bldgs.		\$ 38.00				\$ 88.92		\$ 124.92		\$ 124.92	
Repair, Reconst.—Fairgrounds		912.10	45.00			166.39		1,052.90	70.59	1,123.49	
Eng. for Water Conservation Program			890.80				119.90	1,010.70		1,010.70	
Prod. & Dis. Ods. to Needy (Clothing)		1,603.80				45.00	601.30	2,029.24	220.80	2,250.10	
Pub. Well, Health, & Recr.—Garden & Farm Ponds (Non-Relief)		492.80	134.40		165.90	221.47		740.97	273.60	1,014.57	
Pub. Educ., Arts, & Res. (Clerical)			802.50					802.50		802.50	
Administrative Projects		20.00	3,835.33		63.00		675.72	2,250.00	2,344.05	4,594.05	
Total County Projects		\$ 3,054.70	\$ 5,708.03	\$ 273.90	\$ 476.78	\$ 1,393.92		\$ 8,011.23	\$ 2,909.10	\$ 10,920.33	
State & Federal											
State, Repair, Reconst.—Highways, etc.		\$ 2,978.50	\$ 58.48	\$ 32.40			\$ 200.04	\$ 3,010.90	\$ 258.52	\$ 3,269.42	
Fed. Hous. Adm., Sur. of Houses Needing Repair (Professional Project)		97.20						97.20		97.20	
State, Feed, Ship., & Adm. of Cattle Pro.		83.30	252.00					335.30		335.30	
State, Pub. Well. (Other Pub. Hlth. Cmpns.)		3,084.00		384.00		713.39	161.40	3,488.00	874.79	4,362.79	
State, Collect. & Class. Vital Stat. (Professional Project)		21.60						21.60		21.60	
State, School Recr. Sur. (Professional Proj.)		50.40						50.40		50.40	
State, Child Health Program			66.00					66.00		66.00	
Total State & Federal Projects		\$ 6,315.00	\$ 376.48	\$ 416.40		\$ 713.39	\$ 351.44	\$ 7,049.40	\$ 258.52	\$ 8,182.71	
Grand Total		\$26,447.60	\$ 7,122.76	\$ 1,028.00	\$ 619.45	\$ 5,162.72	\$ 3,685.84	\$ 32,935.88	\$ 258.52	\$ 33,194.40	

*Repair Does Not Include Maintenance.

VI—DISTRIBUTION OF COMMODITIES SUPPLIED BY FSRC AND KERC FOR THE YEAR 1934

Max. Relief Cases						Max. Relief Cases					
Unit of Measure	Amount Distributed	In Any 1 Mo.	Actual Costs	Estimated Valuation	Total	Unit of Measure	Amount Distributed	In Any 1 Mo.	Actual Costs	Estimated Valuation	Total
Commodities Furnished by FSRC						Commodities Furnished by FSRC					
Apples.....	Pounds		\$	\$	\$	Sausage.....	Pounds		\$	\$	\$
Beef, Fresh.....	Pounds					Soup, Canned.....	Cans				
Beef, Canned.....	1½lb Cans	2,616	178	654.00	654.00	Mattresses.....		22	30	220.00	220.00
Blankets.....						Comforts*.....					
Butter.....	Pounds	390	220	97.50	97.50	Pillow Cases*.....		74	67	25.90	25.90
Cheese.....	Pounds					Sheets.....		39	27	58.50	58.50
Flour.....	24lb Sacks	100	39	100.00	100.00	Huck & Terry Towels*.....					
Grain & Feed.....	Bushels	1,075	148	537.50	537.50	New Garments**.....		455	60	399.26	399.26
Lard.....	Pounds	990	148	89.10	89.10	Old Garments**.....		702	67	529.40	529.40
Milk.....	Pounds	576	148	57.60	57.60	Total.....			\$	\$ 4,358.21	\$ 4,358.21
Milk, Skimmed.....	Pounds	1,923	159	153.84	153.84	Total Commodities.....			\$	\$ 7,137.38	\$ 7,137.38
Pork, Salt.....	Pounds	1,390	148	139.00	139.00	Fuel Distribution—FSRC.....					
Pork, Smoked.....	Pounds	5,735	253	974.95	974.95	Coal.....	Tons				
Rice.....	Pounds	1,008	242	60.48	60.48	Fuel Distribution—KERC.....					
Sugar.....	Pounds					Coal.....	Tons				
Tongue, Frozen.....	Pounds	542	150	54.20	54.20	Gas.....	Tons				
Total.....				\$ 2,779.17	\$ 2,779.17	Distribution Costs of FSRC.....					
Commodities Purchased by KERC						Coal Paid by KERC.....					
Beef, Fresh.....	Pounds	1,989	110	\$ 298.35	\$ 298.35	Total.....			\$	\$	\$
Beef, Canned.....	1½lb Cans	2,884	251	576.80	576.80	Grand Total.....				\$ 7,137.38	\$ 7,137.38
Cod Liver Oil.....	12 oz. Bottles.....										
Eggs.....	Dozen.....										
Flour.....	24lb Sacks.....										
Grain & Feed.....	Bushels.....	4,500									
Pork, Smoked.....	Pounds.....										

*Raw Materials Furnished by FSRC. Finished Products Accomplished under Work Projects.

**Materials Furnished for Work Projects from County and Private Funds.

*Raw Materials Furnished by FSRC. Finished Products Accomplished under Work Projects.

**Materials Furnished for Work Projects from County and Private Funds.



VII—ANALYSIS OF COUNTY ADMINISTRATIVE COSTS—1934

	Non-Relief Payrolls		Relief Payrolls		Equipment Rental	Materials	Other Costs	Total Costs
	Aver. Monthly No. Employed	Earnings	Aver. Monthly No. Employ'd	Earnings				
Administrative Projects								
County Funds	2.6	\$ 1,605.33	0.1	\$ 20.00	\$ 63.00	\$	\$ 675.72	\$ 2,344.05
Federal Funds	3.6	\$ 2,250.00						\$ 2,250.00
Additional Administration—County Funds (January through March 31)	2.0	\$ 300.00					\$ 60.00	\$ 360.00
Supplemental Salaries								
City Funds								
Private Funds								
Total Costs		\$ 4,135.33		\$ 20.00	\$ 63.00	\$	\$ 735.72	\$ 4,954.05

VIII—ANALYSIS OF CIVIL WORKS ADMINISTRATION PROJECTS FOR THE ENTIRE PERIOD, NOVEMBER 17, 1933, THROUGH JUNE 30, 1934

Sponsor	Description of Project	FEDERAL FUNDS				SPONSORS' CONTRIBUTIONS				DISTRIBUTION OF COSTS			
		CWA Payrolls	Purchase Orders	Wages	Team-Truck Equip. Exp.	Wages	Team-Truck Equip. Exp.	Materials	Other Costs	Federal Funds	Local Funds	Gr'd Total Expenditures	
Cities													
City of Macksville	Street Improvement	\$ 1,481.55	\$	\$	\$	\$ 36.00	\$	\$ 251.80	\$ 72.00	\$ 1,481.55	\$ 359.80	\$ 1,841.35	
City of St. John	Street Improvement	2,751.75	426.60			100.00	50.00	50.00		3,178.35	150.00	3,328.35	
City of Stafford	Street Improvement	5,065.40	276.90					50.00	95.00	5,342.30	145.00	5,487.30	
City of Hudson	Street Improvement	820.85						73.02	98.55	918.85	171.57	1,090.42	
City of St. John	Building Improvement	4,202.89						5,833.80	650.26	4,202.89	6,484.06	10,686.95	
City of Hudson	Building Improvement	24.00						5.10		24.00	5.10	29.10	
City of Stafford	Park Improvement	92.25								92.25		92.25	
City of Macksville	Cemetery Improvement	553.50	97.50							790.83		790.83	
City of St. John	Public Utility Improvement	787.05						978.59		787.05	978.59	1,765.64	
City of Stafford	Public Utility Improvement	318.00						214.35		318.00	214.35	532.35	
City of Radium	Public Utility Improvement	394.50	28.50							333.00		333.00	
City of St. John	Sewer Improvement	389.70					3.40			389.70		389.70	
City of Stafford	Sewer Improvement	1,026.40						77.83	120.00	1,026.40	197.83	1,224.23	
City of Seward	Flood Control	1,135.95							33.90	1,135.95	136.60	1,272.55	
Total City Projects		\$18,933.79	\$ 829.50	\$	\$ 174.83	\$ 136.00	\$ 156.19	\$7,484.49	\$1,119.71	\$19,938.12	\$ 8,896.39	\$28,834.51	
Schools													
School Dist. No. 45, St. John	Bldg. & Ground Imp.	\$ 286.50	\$ 528.75	\$	\$	\$	\$	\$ 161.91	\$	\$ 815.25	\$ 161.91	\$ 977.16	
School Dist. No. 76, Macksville	Ground Improvement	1,111.05						11.75	81.00	1,111.05	191.30	1,302.35	
Total School Projects		\$ 1,397.55	\$ 528.75	\$	\$	\$ 98.55	\$ 173.66	\$ 81.00	\$ 1,926.30	\$ 353.21	\$ 2,279.51		
County													
Stafford County	Roads	\$ 6,669.20	\$ 9,196.20	\$	\$	\$	\$	\$1,657.62	\$ 165.05	\$15,466.74	\$ 3,369.41	\$19,234.81	
Stafford County	Local CWA Office	975.00								314.86	975.00	1,289.86	
Stafford County	Poor Relief	80.00								60.00	80.00	140.00	
Stafford County	Re-employment Office	1,075.67								182.52	1,075.67	1,258.19	
Total County Projects		\$ 8,799.87	\$ 9,196.20	\$	\$	\$1,657.62	\$ 165.05	\$2,104.12	\$17,996.07	\$ 3,926.79	\$21,922.86		
State & Federal													
State	Roads	\$ 1,302.35	\$ 314.10	\$	\$	\$	\$	\$	\$	\$ 1,616.45	\$	\$ 1,616.45	
State	Sign Boards	49.50								67.80		67.80	
State	Community Sanitation	485.86	85.50							571.36		571.36	
Federal	Community Sanitation	603.52								617.77		617.77	
Federal	Farm Mortgage & Land Value	379.60								379.60		379.60	
Total State & Federal Projects		\$ 2,820.83	\$ 413.85	\$	\$ 18.30	\$	\$	\$	\$ 3,252.98	\$	\$	\$ 3,252.98	
Grand Total		\$31,952.04	\$10,968.30	\$	\$ 193.13	\$ 136.00	\$1,912.36	\$7,823.20	\$3,304.83	\$43,113.47	\$13,176.39	\$56,289.86	

IX—CIVIL WORKS ADMINISTRATION—EMPLOYMENT, MAN HOURS, AND WAGES FOR THE ENTIRE PERIOD, NOVEMBER 17, 1933, THROUGH JUNE 30, 1934

	Employment Data Covering Work Projects and Tool and Sundry Equipment Projects						Employment Data Covering Administrative Projects		Summary				
	All Payrolls Covering Projects Employing Principally Labor			All Payrolls Covering Drivers of Their Own Teams, Trucks and Other Mechanical Equipment			Payrolls on Project Employing Chiefly Farm, Forestry and Local Administrative Proj.		Total Number Employees	Total Earnings, Wages, Salaries, and Hire	Accident Compensation	Grand Total	
	Average Weekly No. of Employees	Total Man Hours Worked	Total Wages Earned	Average Weekly No. of Employees	Total Man Hours Worked	Total Wages Earned	Average Weekly No. of Employees	Salaries and Wages Earned	Weekly Average	Total	Average Weekly Wage	Average Number Men	Total Amount
Stafford County													
Total 1933	145.7	23,241	\$10,345.77	26.0	4,384	\$2,497.90		\$ 349.00	175.4	\$13,192.67	\$12.54	...	\$13,192.67
Total 1st 3 Mo. 1934	159.9	39,743	\$18,469.49	58.1	14,852	\$8,330.90	3.6	\$81.80	228.1	\$28,964.19	9.77	...	\$28,964.19
Total 2nd 3 Mo. 1934	5.4	1,059	\$48.81	1.0	195	\$111.00	0.6	\$126.67	7.5	\$763.48	7.79	...	\$763.48
Total	94.5	64,023	\$29,364.07	28.9	19,431	\$10,939.80	1.7	\$ 708.47	128.6	\$42,920.34	\$10.43	...	\$42,920.34



STANTON COUNTY

661

Board of County Commissioners—S. A. Schmidt, Chairman, Syracuse; H. L. Tucker, Johnson; Wade H. Smoot, Johnson.

County Emergency Relief Committee—Buell Scott, Chairman, Johnson; J. B. Cockrum, Johnson; O. E. Josseland, Johnson; S. A. Schmidt, Syracuse; H. L. Tucker, Johnson.

County Poor Commissioner—Mrs. Belle Watson; County Case Supervisor—Mrs. Clara Collings; Supervisor of Work Program—J. R. Streeter (December, 1934).

Assessed Valuation—\$4,835,330 (March 1, 1934); Bonded Indebtedness—\$30,500 (October 1, 1934); Population—2,347 (March, 1934); Total Population on Relief—387; Per Cent—16.5 (December, 1934).

WORK RELIEF AND CWA, OCTOBER, 1932, THROUGH DECEMBER, 1934

Road and street improvement and emergency water conservation measures were the only types of projects operative to any great extent in Stanton county during the work relief and CWA programs, October, 1932, through December, 1934. The case load in this county, the second most sparsely populated in the state, was comparatively heavy but many clients could not be assigned to work. Therefore, only 45 miles of roads were improved, including the grading of 10 miles of state highway and the surfacing of 35 miles of county and township roads. Under the CWA only road projects were operative, and the general aim was to build up State Highway No. 27. Work done by the county consisted of sanding the main traveled roads leading into Manter and Big Bow and in connecting Manter with Highway No. 27. This provided for farmers living in the eastern and western sections of the county an all-weather road leading into the towns. All work on the roads was done by freemen and by hand labor. Two bridges and large culverts were built in connection with the road improvement program.

At Johnson, the county seat, six blocks of streets were repaired including the laying of curbs and gutters. This work was considered by county officials as one of the most meritorious accomplishments made under the work relief program.

Under the water conservation program, which was developed in July, 1934, to alleviate water shortage caused by continued drought and hot weather, a total of 12 ponds was built, including eight garden ponds and four farm ponds. A pest eradication project for the extermination of jackrabbits was approved in this county late in the year. Work relief clients constructed and set up pens for capturing the rodents.

The case load in the county more than doubled during 1934 owing to the prolonged drought. A general rain had not fallen for four years, and all vegetation had been destroyed by a combination of drought and dust. The outstanding accomplishment in public welfare service, according to the county relief administration, has been the development of a more sympathetic understanding by the community of the need for relief and a better spirit of co-operation between the public and the welfare agency.

EXPENDITURES FOR RELIEF AND CWA FROM ALL SOURCES, 1934*			
	Relief Program	CWA Program	Total
Total County Funds.....	\$ 4,860.09	\$.....	\$ 4,860.09
Total Township Funds.....
Total City Funds.....	438.55	438.55
Total School Funds.....
Total Privately Raised Funds.....	438.55
Total State Funds.....	3,518.16	3,518.16
Total Federal Funds.....	29,071.41	14,308.05	43,379.46
Total.....	\$ 37,888.21	\$ 14,308.05	\$ 52,196.26

EXPENDITURES FOR RELIEF AND CWA FROM ALL SOURCES, 1924-1933*			
	Relief Program	CWA Program	Total
Total County Funds.....	\$ 16,778.40	\$.....	\$ 16,778.40
Total Private Funds.....	1,633.31	1,633.31
Total City Funds.....
Total Federal Funds.....	1,736.40	2,255.33	3,991.73
Total.....	\$ 20,148.11	\$ 2,255.33	\$ 22,403.44

*Excludes All Non-relief Obligations Except Payrolls.

I—ANALYSIS OF ALL RELIEF GRANTED FROM FEDERAL, LOCAL PUBLIC, AND PRIVATE WELFARE AGENCY FUNDS—1934

ITEMS	RESIDENT FAMILIES				RESIDENT SINGLES				RESIDENT TOTAL				TRANSIENTS		GRAND TOTAL
	Aver. Mo. Cases	Aver. Mo. No. Persons Rept.	Amount	Aver. Mo. Relief Per Case	Aver. Mo. Cases	Amount	Aver. Mo. Relief Per Case	Aver. Mo. Cases	Amount	Aver. Mo. Relief Per Case	Actual No. Persons	Amount	Actual No. Persons	Amount	All Relief Granted
Section A—Work and Direct Relief															
Approved Work Projects	42.8	225.8	\$ 21,310.65	\$ 41.46	0.8	\$ 171.50	\$ 19.06	43.6	\$ 21,482.15	\$ 41.07	\$.....	\$.....	\$ 21,482.15
Federal Funds.....	2.0	9.8	190.55	7.94	2.0	190.55	7.94	190.55
County Funds.....	44.8	235.6	\$ 21,501.20	\$ 39.97	0.8	\$ 171.50	\$ 19.06	45.6	\$ 21,672.70	\$ 39.62	\$.....	\$.....	\$ 21,672.70
Total.....	4.6	20.0	936.83	17.03	0.3	30.30	10.10	4.9	967.13	16.39	967.13
Additional County Projects	49.4	255.6	\$ 22,438.03	\$ 37.84	1.1	\$ 201.80	\$ 15.52	50.5	\$ 22,639.83	\$ 37.36	\$.....	\$.....	\$ 22,639.83
Total Work Relief.....
Direct Relief	7.3	38.3	\$ 1,450.59	\$ 16.67	0.8	\$ 375.07	\$ 41.67	8.1	\$ 1,825.66	\$ 18.82	1	\$ 5.55	\$.....	\$ 1,831.21
County Funds.....
Federal Funds.....	25.00	25.00	25.00	25.00
Garden Seed.....	837.67	837.67	837.67	837.67
Fuel Distribution.....	7.3	38.3	\$ 2,313.26	\$.....	0.8	\$ 375.07	\$.....	8.1	\$ 2,688.33	\$.....	1	\$ 5.55	\$.....	\$ 2,693.88
Total.....	56.7	293.9	\$ 24,751.29	\$.....	1.9	\$ 576.87	\$.....	58.6	\$ 25,328.16	\$.....	1	\$ 5.55	\$.....	\$ 25,333.71
Total Work & Direct Relief	5.7	31.4	5.7
Less Duplicated Cases.....	51.0	262.5	\$ 24,751.29	\$.....	1.9	\$ 576.87	\$.....	52.9	\$ 25,328.16	\$.....	1	\$ 5.55	\$.....	\$ 25,333.71
Net Total, Section A.....
Section B—Special Programs															
Federal Grants in Aid
Emergency Educ. Pro.†.....
College Student Pro.†.....	7.0	48.5	490.35	35.03	1.0	7.00	7.00	8.0	497.35	33.15	497.35
Homestead Rehabilitation.....
Civil Works Service†.....	7.0	48.5	490.35	1.0	7.00	8.0	497.35	497.35
Total Section B.....
Section C—Other Relief from County Funds															
Poor Farm.....	0.8	2.2	386.00	42.89	0.8	386.00	42.89	386.00
Hospitalization.....
Other Institutions.....
Pensions.....
Mothers' Aid.....	0.7	2.8	188.08	23.51	0.7	188.08	23.51	188.08
Crippled Children.....
All Other (Burials, etc.).....	1.5	5.0	574.08	31.89	1.5	574.08	31.89	574.08
Total Section C.....
Section D—Relief from Private Agencies															
Red Cross.....	15.3	76.9	438.55	2.38	15.3	438.55	2.38	438.55
Religious Organizations.....
Fraternal Clubs.....
Community Chest.....
Associated Charities.....
Welfare Boards.....
Salvation Army.....
Parent-Teachers Assn.....
Other Agencies.....
Total Section D.....	15.3	76.9	438.55	2.38	15.3	438.55	2.38	438.55
Section E—Relief from City Funds															
Total Sections A to E, Incl.....	74.8	392.9	\$ 26,254.27	2.9	\$ 583.87	77.7	\$ 26,838.14	1	\$ 5.55	\$.....	\$ 26,843.69
Section F—Surp. Commodities—Est. Val.															
Commodities Granted by†
Fed. Surplus Relief Corp.....	1,315.51	1,315.51	1,315.51
Kansas Emer. Relief Com.....	1,324.90	1,324.90	1,324.90
Fuel Granted by†
Fed. Surplus Relief Corp.....
Total Section F.....	\$ 2,640.41	\$ 2,640.41	\$ 2,640.41
Grand Total All Relief															
	\$ 28,894.68	\$ 583.87	\$ 29,478.55	\$ 5.55	\$.....	\$ 29,484.10

*Cases Included in Schedule III. †Cases Included in Schedule VI. ‡Case Averages Based on Actual Number of Months Program Was in Operation.



662

STANTON COUNTY

II—SUMMARY OF ALL OBLIGATIONS INCURRED FOR RELIEF AND THE WORK RELIEF PROGRAM FOR YEAR 1934 AND CIVIL WORKS ADMINISTRATION FROM NOVEMBER 17, 1933, THROUGH JUNE 30, 1934

Consolidated Statement of All Obligations for These Purposes Against Federal, State, Local Public, Private and Private Welfare Agency Funds

ITEMS	Federal Funds	County Funds	City Funds	Township Funds	School Funds	Private Funds	Total Funds	State Funds	Private Agy. Funds	Grand Total All Funds
Section A										
Work Relief—Wages on Approved Projects.	\$ 21,482.15	\$ 190.55					\$ 21,672.70			\$ 21,672.70
Section B										
Non-Relief Obligations—Work Relief Pro.										
Materials										
Aggregate Materials & Stone	\$	\$ 216.14					\$ 216.14	\$ 30.83		\$ 246.97
Cement								2,235.40		2,235.40
Bituminous Materials	96						96	29.13		30.09
Petroleum Products		19.79					19.79	60.62		80.41
Iron & Steel	351.32						351.32	1,050.96		1,402.28
Clay Products										
Lumber	34.02						34.02	130.43		164.45
Plumbing & Heating								4.37		4.37
Hardware	2.02	62.14					64.16	16.32		80.48
Explosives										
Paint & Paint Materials										
Total Materials	\$ 388.32	\$ 298.07					\$ 686.39	\$ 3,558.06		\$ 4,244.45
Team, Truck, & Equipment Expense										
Equipment Parts & Supplies	\$	\$ 20.82					\$ 20.82	\$ 30.14		\$ 50.96
Office Supplies & Equipment		18.39					18.39	23.98		42.37
Rental of Equipment	950.10						950.10	195.00		1,145.10
Total Team, Truck, & Equip. Exp.	\$ 950.10	\$ 39.21					\$ 989.31	\$ 249.12		\$ 1,238.43
Other Costs										
Tools	\$	\$					\$	\$ 29.08		\$ 29.08
Rental of Premises										
Other Services	434.15	497.12					931.27	835.10		1,766.37
Other Charges								14.82		14.82
Miscellaneous		36.70					36.70	15.06		51.76
Total Other Costs	\$ 434.15	\$ 533.82					\$ 967.97	\$ 894.06		\$ 1,862.03
Wages & Salaries	\$ 3,424.83	\$ 997.12					\$ 4,421.95	\$ 3,518.16		\$ 7,940.11
Total Non-Relief Obligations	\$ 5,197.40	\$ 1,868.22					\$ 7,065.62	\$ 8,219.40		\$ 15,285.02
Total Sections A & B	\$ 26,679.55	\$ 2,058.77					\$ 28,738.32	\$ 8,219.40		\$ 36,957.72
Section C										
Additional County Work Relief										
Direct Relief	\$ 862.67	\$ 967.13					\$ 2,693.88			\$ 967.13
Admin. Costs Prior to Admin. Projects		1,831.21								2,693.88
Wages & Salaries		300.00					300.00			300.00
Other Costs		143.97					143.97			143.97
Total	\$	\$ 443.97					\$ 443.97			\$ 443.97
Total Section C	\$ 862.67	\$ 3,242.31					\$ 4,104.98			\$ 4,104.98
Section D										
Relief from Special Programs										
Other Relief from County Funds	\$ 497.35	\$ 574.08					\$ 497.35			\$ 497.35
Other Relief from City Funds										574.08
Relief from Private Welfare Agency Funds								438.55		438.55
Surplus Commodities & Fuel—Est. Value	2,640.41						2,640.41			2,640.41
Supplemental Administrative Salaries										
Total Section D	\$ 3,137.76	\$ 574.08					\$ 3,711.84		\$ 438.55	\$ 4,150.39
Grand Total Sections A to D, Incl.	\$ 30,679.98	\$ 5,875.16					\$ 36,555.14	\$ 8,219.40	\$ 438.55	\$ 45,213.09
Section E										
Civil Works Administration										
Work Projects										
Payrolls	\$ 15,378.88						\$ 15,378.88			\$ 15,378.88
Other Costs	10.71	213.24					223.95			223.95
Total	\$ 15,389.59	\$ 213.24					\$ 15,602.83			\$ 15,602.83
Administration										
Payrolls	\$ 1,184.50						\$ 1,184.50			\$ 1,184.50
Other Costs		187.67					187.67			187.67
Total	\$ 1,184.50	\$ 187.67					\$ 1,372.17			\$ 1,372.17
Total Civil Works Administration	\$ 16,574.09	\$ 400.91					\$ 16,975.00			\$ 16,975.00
Grand Total	\$ 47,254.07	\$ 6,276.07					\$ 53,530.14	\$ 8,219.40	\$ 438.55	\$ 62,188.09

III—MONTHLY RECORD OF RESIDENT CASES SHOWING APPLICATIONS RECEIVED, CASES OPENED, ACTIVE AND INACTIVE CASES, AND CASES CLOSED FOR YEAR 1934

	Cases at Beginning of Mo.	Applications Rec'd	Total Cases Opened	New Cases Opened	Old Cases Re-Opened	Total Mo. Case Load	Cases Rec'd Relief	*Cases Homest'd Rehab. Project	Cases Received No Relief	Total Cases Closed	Cases Closed Because Employ't	Cases Closed Other Reasons	Cases Open End of Mo.	Cases Active End of Month	Cases Inactive End of Month
January	60	10	10	10	...	70	25	...	45	49	29	20	21	21	...
February	21	24	20	20	...	41	41	1	...	1	40	40	...
March	40	53	29	29	...	60	45	...	24	28	...	28	41	41	...
April	41	35	35	35	...	76	70	...	6	5	1	4	71	70	1
May	71	14	9	8	1	80	69	...	11	8	4	4	72	69	3
June	72	13	6	6	...	78	59	...	19	4	2	2	74	59	15
July	74	10	10	10	...	84	39	...	45	27	22	5	57	39	18
August	57	31	4	3	1	61	52	...	9	7	...	7	54	52	2
September	54	11	2	2	...	56	48	...	8	6	5	1	50	48	2
October	50	44	19	19	...	69	53	...	16	3	1	2	66	53	13
November	66	32	6	6	...	72	64	8	8	4	...	4	68	64	4
December	68	20	20	10	10	88	82	7	6	1	...	1	87	82	5

*Included in Cases Receiving Relief.

STANTON COUNTY



SWIMMING POOL-MANTER--I04-B12-14



BRIDGE-SOUTH OF BIG BOW--I04-B2-1

SWIMMING POOL AND COUNTY BARN

The swimming pool (upper left) was constructed at Manter to provide additional recreational facilities. The pool is of reinforced concrete, and the bathhouse (background) is a single story frame structure. A seat and diving board were provided as a part of the equipment.

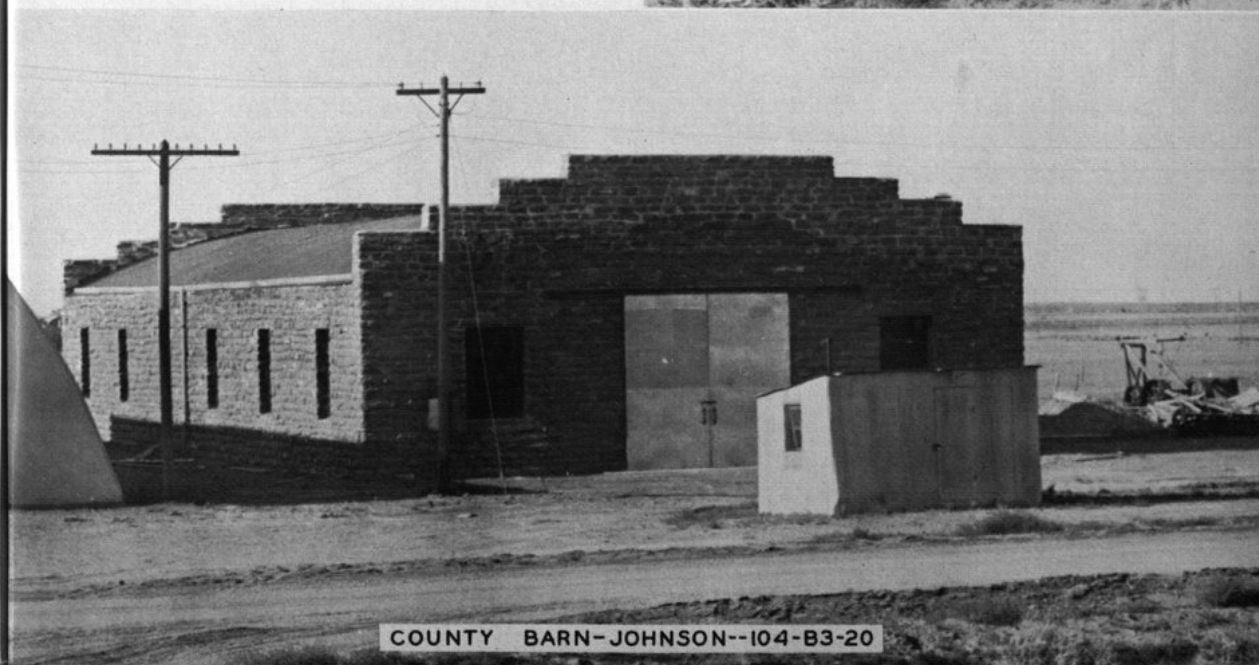
The county barn (lower photograph) was built of native stone by unskilled relief laborers under skilled supervision. The stone, as the picture indicates, was cut into sizes suitable for masonry work of this type. The barn is used to house county-owned tools and other necessary equipment.

TWO COUNTY BRIDGES

These two bridges (upper and center right) were the only structures of their kind which had been completed in connection with road improvements projects at the close of 1934. The upper bridge is of treated timber with reinforced concrete abutments. The lower bridge, an overflow type structure, was built entirely of reinforced concrete, including supporting piers.



BRIDGE-SOUTHEAST OF BIG BOW--I04-B2-1



COUNTY BARN-JOHNSON--I04-B3-20