

## Public Welfare Service in Kansas

### Section 25, Pages 721 - 750

This item contains 4 bulletins published by the Kansas Emergency Relief Committee (KERC) and the Civil Works Administration (CWA) in Topeka, Kansas. The bulletin numbers are #127 (1924-1933), #289 (1934), #355 (1935), and #380 (1936). The year listed by the bulletin number is the year covered; though the bulletin generally had a publication date sometime the next year. Bulletin Number 127 covers a ten year period from 1924-1933. This report has an introduction, information on the KERC; special programs of the KERC; state statistical summaries; and 105 county reports. Bulletin 289 covers state organization; accomplishments under Work Relief and CWA, special programs in the state and county in 1934; case load and expenditures; state and county statistical summaries; 105 county reports; wage rates, labor relations, and complaints; economic conditions affecting relief load; grants and loans from State and Federal Agencies other than Relief; and maps and charts. Bulletin Number 355 covers the Relief Department, Accounting and Finance Department, Engineering Department; state and county statistical summary; 105 county statistical reports; relief obligations and case load, Homestead Rehabilitation Department; economic conditions affecting relief load; relief appropriations and relief laws; the coordination of public and private welfare service; grants and loans from federal state agencies other than relief. Bulletin Number 380 covers Legislation of 1936, social service development in 1936; case load and case work service and the cost of public assistance and administration; accounting procedures for funds, equipment, materials and commodities; production and distribution projects; Boards of County Commissioners and County Social Welfare Personnel; KERC publications, KERC Audit Reports, and KERC Personnel and Pay Rolls. Also, information on the State and Social Welfare Building, Trust Deed, and the Kansas Homestead Rehabilitation Corporation, State Charter and KHRC Audit Reports. Each of the first three bulletins has an index at the end.

Creator: Kansas Emergency Relief Committee

Date: 1924-1936

Callnumber: S.P. 361 K13eb

KSHS Identifier: DaRT ID: 213284

Item Identifier: 213284

[www.kansasmemory.org/item/213284](http://www.kansasmemory.org/item/213284)



State & Federal Projects	28,366.05	108,625.71	621.20	1,620.03	110.68	63,905.86	200,968.16	1,826.72	454.65	203,249.53
Special State Sponsored Projects	93,995.84	102,100.43	48.00	4,790.60		6,984.60	207,021.17	724.00	174.30	207,919.47
Professional & Clerical Projects		24,308.47				4,105.77	28,414.24			28,414.24
Social Service Training Schools						1,917.69	179,933.03			179,933.03
KERC Expenditures for CWA Materials	81.80	2,777.93	47.10	268.00	80.63	176,965.57	330,910.57			330,910.57
Commodity Purchase & Distribution	23,573.11	36,180.79	3,010.75	231.09	155.17	268,908.47	1,623,220.68			1,623,220.68
Canning Program	787,481.53	122,560.28	1,933.85	47,364.29	42,454.50	622,580.06	72,907.55			72,907.55
Mattress Program	39,992.85	6,767.33	251.00	1,636.84	1,528.92	23,023.48	492,037.04			492,037.04
New Const. of Roads (State Highway)	341,985.50	30,206.00	149,947.94	30,907.63	56,987.17	10,538.73	424,108.95			424,108.95
Reconst. & Repair of Roads (State Highway)	353,984.73	51,209.41	68,236.22	56,650.94	44,744.49	4,477.27	146,560.09			146,560.09
State Highway Administration		1,110.65					154,780.51			154,780.51
New Const. of Public Bldgs.	7,287.25	5,067.07		970.12	7,159.03	238.97	12,398.31			12,398.31
Reconst. & Repair Public Bldgs.	11,261.20	2,038.20	91.20	41.90	5,829.31	132.67	12,042.49			12,042.49
New Const. of Bridges, etc.	2,062.25			183.20	227.58		2,062.25			2,062.25
New Const. & Repair Drainage & Sanitation	1,854.60	56.08		95.10	907.44	64.91	2,748.14			2,748.14
New Const. Recreational Facilities	616.60			98.60	491.10		694.50			694.50
Reconst. & Repair Recreational Facilities	10,919.35	60.35	412.30	43.85	119.65	23.75	11,331.65			11,331.65
Reconst. & Repair Waterways (Flood Control)	1,165.60						1,165.60			1,165.60
Landscaping—Airports, etc.	62,340.45	4,362.31	1,548.75	2,117.41	1,752.68	2,996.79	63,980.20			63,980.20
Eradication & Control of Pests	3,927.20	324.00		77.00			3,927.20			3,927.20
Cemetery Improvement							888.40			888.40
Other Public Health Campaigns	8,049.11	795.84	1,055.95	10.30	2,331.02	182.20	9,405.50			9,405.50
State Administration		308,604.69		67,771.00		119,833.37	496,209.06			496,209.06
Total State & Federal Projects	\$1,779,863.42	\$2,595,903.58	\$672,854.84	\$1,451,814.45	\$1,601,889.31	\$1,799,628.73	\$3,426,318.47	\$330,710.57	\$1,466.70	\$3,427,815.14
Grand Total	\$8,646,329.00	\$2,995,903.58	\$672,854.84	\$1,451,814.45	\$1,601,889.31	\$1,799,628.73	\$3,426,318.47	\$330,710.57	\$1,466.70	\$3,427,815.14

### VI—RECAPITULATION—DISTRIBUTION OF COMMODITIES SUPPLIED BY FSRC AND KERC FOR THE YEAR 1934

Amount Includes Commodities Distributed to All Counties, State Schools, State Institutions, Transient Centers, and Indian Agencies

Commodities Furnished by FSRC	Unit of Measure	Amount Distributed	Largest No. Family Cases In Any 1 Mo.	Actual Costs	Estimated Valuation	Total	Commodities Furnished by KERC	Unit of Measure	Amount Distributed	Largest No. Family Cases In Any 1 Mo.	Actual Costs	Estimated Valuation	Total
Apples	Pounds	54,801	1,058		548.01	548.01	Beef, Fresh	Pounds	1,644,068	31,207		246,337.80	246,337.80
Potatoes	Pounds	705,754	56,256		176,438.50	176,438.50	Beef, Canned	1 1/2 lb. Cans	1,400,386	73,989		281,877.20	281,877.20
Beef, Canned	1 1/2 lb. Cans	18,000	15,100		18,000.00	18,000.00	Cod Liver Oil	12 oz. Bottles	8,256	5,412		4,128.00	4,128.00
Blankets	Each	670,127	57,544		167,531.75	167,531.75	Flour	12 lb. Sacks	10,139	5,795		4,562.55	4,562.55
Butter	Pounds	97,468	48,600		18,480.76	18,480.76	Eggs	Dozens	50,820	50,820		8,973.00	8,973.00
Cheese	Pounds	68,842	15,219		20,669.00	20,669.00	Sausage	Pounds	2,342	636		351.30	351.30
Flour	24 lb. Sacks	41,338			24,163.60	24,163.60	Straw Ticks	Each	275	247		935.00	935.00
Grain & Feed	Bushels	480,019	42,115		43,206.81	43,206.81	Mattresses*	Each	8,649	6,030		86,490.00	86,490.00
Lard	Pounds	241,636	34,920		43,724.00	43,724.00	Comforts*	Each	4,068	3,493		13,221.90	13,221.90
Milk	Gallons	546,550	21,682		312,199.22	312,199.22							
Pork, Salt	Pounds	179,436	36,489		10,766.16	10,766.16							
Pork, Smoked	Pounds	118,234	7,914		5,912.70	5,912.70							
Rice	Pounds	149,864	35,505		14,986.48	14,986.48							
Sugar	Pounds												
Tongue, Frozen	Pounds												
Total					\$ 925,468.99	\$ 925,468.99							
Commodities Furnished by KERC													
Beef, Fresh	Pounds	1,644,068	31,207		246,337.80	246,337.80							
Beef, Canned	1 1/2 lb. Cans	1,400,386	73,989		281,877.20	281,877.20							
Cod Liver Oil	12 oz. Bottles	8,256	5,412		4,128.00	4,128.00							
Flour	12 lb. Sacks	10,139	5,795		4,562.55	4,562.55							
Eggs	Dozens	50,820	50,820		8,973.00	8,973.00							
Sausage	Pounds	2,342	636		351.30	351.30							
Straw Ticks	Each	275	247		935.00	935.00							
Mattresses*	Each	8,649	6,030		86,490.00	86,490.00							
Comforts*	Each	4,068	3,493		13,221.90	13,221.90							
Total					\$ 246,337.80	\$ 246,337.80							
Fuel Distribution—KERC													
Coal	Tons	6,578.29											
Gas	Cubic Feet	8,842.93											
Distribution Costs of FSRC													
Total					\$ 31,976.98	\$ 31,976.98							
Grand Total					\$ 773,662.22	\$ 773,662.22							

\*Raw Materials Furnished by FSRC. Finished Products Accomplished under Work Projects.  
\*\*Materials Furnished for Work Projects from County Private Funds.  
†Includes Commodities Amounting to \$24,157.47 Distributed to State Schools, State Institutions, Transient Centers, and Indian Agencies.

### VII—RECAPITULATION—ANALYSIS OF STATE AND COUNTY ADMINISTRATIVE COSTS—1934

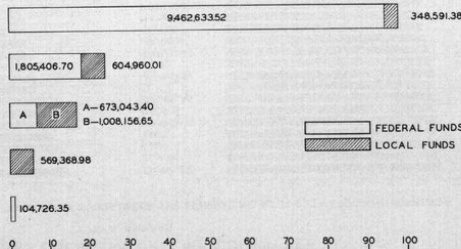
Administrative Projects	Non-Relief Payrolls		Relief Payrolls		Equipment Rental	Materials	Other Costs	Total Costs
	Aver. Monthly No. Employed	Earnings	Aver. Monthly No. Employed	Earnings				
County Funds	632.6	\$ 345,103.76	3.1	\$ 283.92	\$ 96,411.55	\$3,900.72	\$149,884.91	\$95,384.89
Federal Funds	1,311.7	971,072.63	297.2	110,369.79	67,771.00		119,833.37	1,268,946.79
Additional Administration (Prior to Administrative Projects)								
County Funds	345.6	66,751.22					44,696.25	111,447.47
Federal Funds	29.0	9,162.85					5,915.92	15,078.77
Supplemental Salaries								
County Funds		7,011.75						7,011.75
Private Funds		27,853.89					1,140.48	28,994.37
Total Costs		\$1,426,956.13		\$110,553.71	\$164,182.55	\$3,900.72	\$321,470.93	\$2,027,064.04

STATE STATISTICAL SUMMARY

Summary of City, School, Township, County, State and Federal Expenditures															
FEDERAL FUNDS					SPONSOR'S CONTRIBUTIONS					DISTRIBUTION OF COSTS					
Sponsor	Description of Project	CWA Purchases		Purchase Order		Materials	Sponsor's Contributions		Materials	Other Costs	Federal Funds		Local Funds		Grand Total
		Wages	Team-Work, Equip. Exp.	Team-Work, Equip. Exp.	Materials		Wages	Team-Work, Equip. Exp.			Federal Funds	Local Funds	Expenditures		
373	Street Improvement -	\$1,641,789.34	\$3,442,456.21	6,734.51	17,569.49	\$3,437.47	\$6,744.94	198,496.31	\$3,322.25	\$2,962,549.95	\$359,515.92	\$2,427,064.87			
373	Street Improvement -	703,026.07	58,453.47	10,411.11	10,377.44	17,346.02	17,346.02	10,377.44	28,969.41	830,031.91	131,037.92	961,069.59			
373	Public Utility	221,646.64	8,174.31	517.92	10,235.12	15,236.02	3,357.20	55,353.37	9,628.44	240,852.35	19,326.11	260,178.46			
373	Public Utility	823,984.78	2,894.79	1,364.96	2,894.79	1,364.96	1,364.96	10,208.66	11,030.87	84,326.10	64,326.10	991,959.59			
64	Public Buildings	463,486.45	16,963.99	1,680.00	2,620.01	2,883.40	3,331.15	26,811.54	25,155.12	483,955.05	67,180.21	551,135.26			
64	Public Buildings	173,287.00	2,894.79	1,364.96	2,894.79	1,364.96	1,364.96	10,208.66	11,030.87	99,177.54	79,177.54	168,355.08			
64	Sewage & Dump Grounds	98,286.97	2,258.72	185.00	3,249.75	2,567.27	1,873.37	10,276.89	2,382.19	99,390.44	10,390.44	110,160.88			
64	Sewage & Dump Grounds	1,630,533.11	6,530.53	15.00	12.58	69.00	15.00	12.58	69.00	59,821.43	59,821.43	160,101.18			
373	Miscellaneous	\$1,410,933.11	\$47,318.90	\$13,372.53	\$221,004.90	\$7,740.45	\$94,119.10	\$47,365.32	\$143,548.11	\$1,460,923.58	\$78,722.98	\$1,539,646.56			
Schools	Total School Projects														
184	School Projects	\$254,400.26	\$20,114.91	\$1,455.00	\$21,749.51	\$7,694.79	\$2,838.16	\$2,807.96	\$6,783.43	\$307,719.68	\$103,414.34	\$411,134.02			
184	School Projects	\$254,400.26	\$20,114.91	\$1,455.00	\$21,749.51	\$7,694.79	\$2,838.16	\$2,807.96	\$6,783.43	\$307,719.68	\$103,414.34	\$411,134.02			
Townships	Total Township Projects														
125	Land Improvements	\$216,648.25	\$3,769,033.45	\$877.42	\$375.88	\$20,622.98	\$32,754.90	\$7,134.58	\$9,509.74	\$281,684.62	\$8,232.90	\$361,917.52			
125	Land Improvements	1,919.00	316.65			288.61	569.40	77.10	74.39	2,233.63	437.86	1,486.31			
125	Land Improvements	487.00	127.60			25.56	70.10	26.85	224.00	744.80	44.41	1,486.31			
125	Land Improvements	617.20	127.60							881.00		1,486.31			
125	Land Improvements	220,443.11	\$4,697,798.87	\$877.42	\$375.88	\$20,622.98	\$32,754.90	\$7,134.58	\$9,509.74	\$280,394.52	\$8,231.72	\$368,706.24			
Counties	Total County Projects														
105	County Roads	\$374,392.70	\$3,639,494.71	\$4,263.57	\$76,670.78	\$187,372.02	\$586,238.00	\$2,262,068.21	\$2,837,439.31	\$4,627,330.76	\$1,073,135.80	\$5,700,466.56			
105	County Roads	277,363.99	75.00			4,911.09	7,467.72	3,234.34	35,246.08	277,363.99	119,284.27	396,648.26			

[illegible]

TEAM TRUCK & EQUIPMENT  
RENTALS PAID ON CLAIM VOUCHERS



94 PUBLIC WELFARE SERVICE IN KANSAS—1991

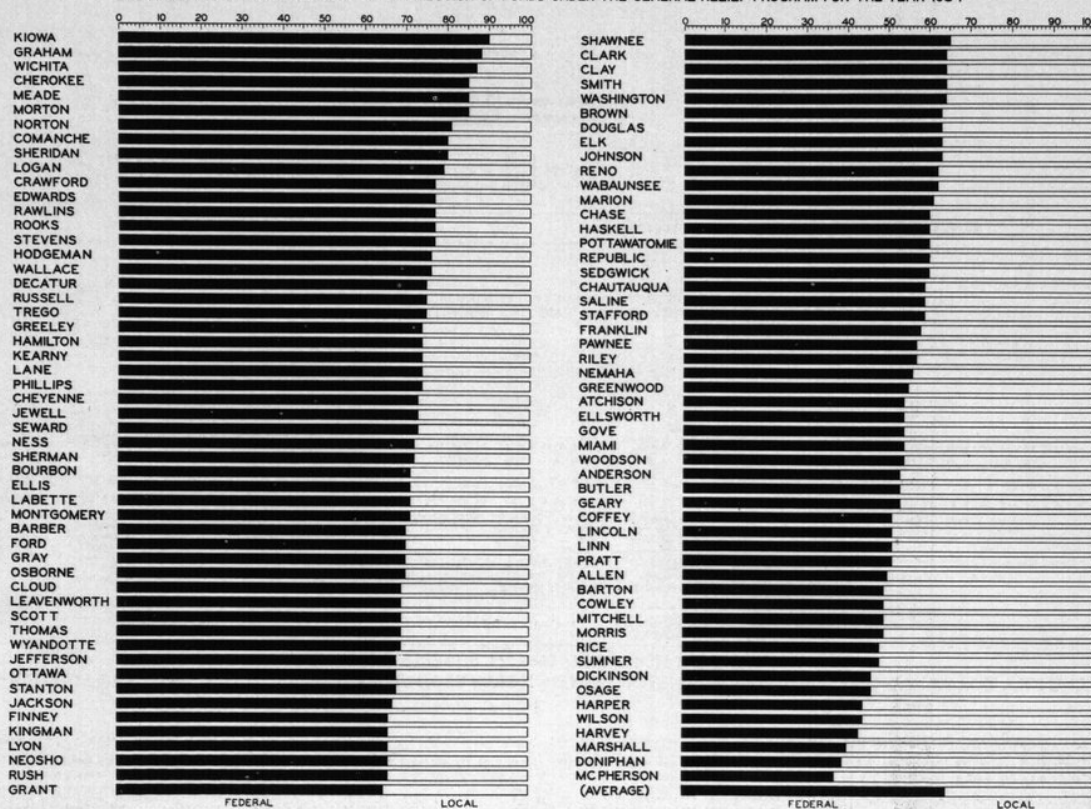
STATE STATISTICAL SUMMARY

3



### THE KANSAS EMERGENCY RELIEF COMMITTEE TOPEKA, KANSAS

A CHART SHOWING THE PERCENTAGE DISTRIBUTION OF FUNDS UNDER THE GENERAL RELIEF PROGRAM FOR THE YEAR 1934





### ALLEN COUNTY

Board of County Commissioners—Joe McKinley, Chairman, Iola; H. V. Adams, Moran; A. D. Jordan, Savonburg.

County Emergency Relief Committee—Angelo C. Scott, Chairman, Iola; Joe McKinley, Iola; H. V. Adams, Moran; W. W. Lam, Moran; C. A. Brooke, Humboldt.

County Poor Commissioner—W. D. Clark; County Case Supervisor—Myron A. Funk; Supervisor of Work Program—A. W. Young (December, 1934).

Assessed Valuation—\$21,479,094 (March 1, 1934); Bonded Indebtedness—\$846,200 (October 1, 1934); Population—20,174 (March, 1934); Total Population on Relief—3,133; Per Cent—15.5 (December, 1934).

#### EXPENDITURES FOR RELIEF AND CWA FROM ALL SOURCES, 1934\*

	Relief Program	CWA Program	Total
Total County Funds.....	\$ 46,230.99	\$ 5,096.82	\$ 51,327.81
Total Township Funds.....	1,473.01	482.86	1,955.87
Total City Funds.....	1,754.98	803.26	2,558.24
Total School Funds.....	6,777.01	.....	6,777.01
Total Privately Raised Funds.....	49.59	304.24	353.83
Total State Funds.....	79,645.80	71,289.36	150,935.16
Total Federal Funds.....	.....	77,976.54	77,976.54
Total.....	\$135,931.38	\$ 5,096.82	\$141,028.20

#### EXPENDITURES FOR RELIEF AND CWA FROM ALL SOURCES, 1924-1933\*

	Relief Program	CWA Program	Total
Total County Funds.....	\$292,746.31	.....	\$292,746.31
Total Private Funds.....	28,302.88	.....	28,302.88
Total City Funds.....	17,203.15	36,654.54	53,857.69
Total Federal Funds.....	.....	36,654.54	36,654.54
Total.....	\$338,252.34	\$ 36,654.54	\$374,906.88

\*Excludes All Non-relief Obligations Except Payrolls.

#### WORK RELIEF AND CWA, OCTOBER, 1932, THROUGH DECEMBER, 1934

Of the many improvements made in Allen county under the CWA and work relief programs, repair of roads has been the most important. From October, 1932, until the close of 1934, road projects included the improving of 102 miles of county and township roads, construction of culverts where needed, and the cleaning and painting of 30 bridges. Most of this work was done while the CWA was in operation.

Street improvement consisted mainly of grading and surfacing 96 blocks. Other city improvements included work on three parks at Iola, Moran, and Elsmore, two cemeteries at Iola and Savonburg, the water mains and gas service at Humboldt, and at Iola the dump grounds were cleaned up and the rubbish removed to a more out-of-the-way place. Nine rooms in public buildings at Iola underwent repair. Drainage ditches were cleaned and 15 wood top culverts built in connection with street improvements made at Moran.

Under the water conservation program one emergency pumping plant was set up, five emergency wells dug, and six farm ponds constructed. Ripping for bank protection was done on several small streams. Sanitation projects included work on 13 septic tanks and the construction of 99 community sanitation units. The sewing room at Iola produced nearly a thousand garments during 1934.

Because of the great number of unemployed farm and factory laborers who were thrown on relief during 1934, work relief projects became of great importance. Previous to 1933 and 1934 the large number of industrial concerns had offered employment for most of the laborers and also drew many families into the county. By 1934, however, practically all of these industries, including smelters, brick plants, cement plants, iron works, a candy factory, and others, had shut down or were removed from the county, leaving a surplus of skilled and semi-skilled laborers out of work with no possibility of steady employment in their own field. Employment at the few factories and plants which continued to operate was sporadic. Owing to drought, farmers suffered an exhaustion of resources and could not afford to employ the many farm laborers who had always depended on harvest work for support.

### I—ANALYSIS OF ALL RELIEF GRANTED FROM FEDERAL, LOCAL PUBLIC, AND PRIVATE WELFARE AGENCY FUNDS—1934

ITEMS	RESIDENT FAMILIES				RESIDENT SINGLES				RESIDENT TOTAL				TRANSIENTS		GRAND TOTAL
	Aver. Mo. No. Cases	Aver. Mo. No. Persons Rept.	Amount	Aver. Relief Per Case	Aver. Mo. No. Cases	Amount	Aver. Relief Per Case	Aver. Mo. No. Cases	Amount	Aver. Relief Per Case	Actual No. Persons	Amount	Actual No. Persons	Amount	All Relief Granted
<b>Section A—Work and Direct Relief</b>															
Approved Work Projects															
Federal Funds.....	337.5	1,458.7	\$ 50,336.51	\$ 12.43	7.8	\$ 805.00	\$ 8.56	345.3	\$ 51,141.51	\$ 12.34	.....	.....	.....	.....	\$ 51,141.51
County Funds.....	.....	.....	.....	.....	.....	.....	.....	.....	.....	.....	.....	.....	.....	.....	.....
Total.....	337.5	1,458.7	\$ 50,336.51	\$ 12.43	7.8	\$ 805.00	\$ 8.56	345.3	\$ 51,141.51	\$ 12.34	.....	.....	.....	.....	\$ 51,141.51
Additional County Projects.....	.....	.....	.....	.....	.....	.....	.....	.....	.....	.....	.....	.....	.....	.....	.....
Total Work Relief.....	337.5	1,458.7	\$ 50,336.51	\$ 12.43	7.8	\$ 805.00	\$ 8.56	345.3	\$ 51,141.51	\$ 12.34	.....	.....	.....	.....	\$ 51,141.51
Direct Relief															
County Funds.....	238.1	911.0	\$ 16,408.07	\$ 5.74	43.6	\$ 2,617.87	\$ 5.01	281.7	\$ 19,025.94	\$ 5.63	46	\$ 102.23	.....	.....	\$ 19,128.17
Federal Funds.....	.....	.....	.....	.....	.....	.....	.....	.....	.....	.....	.....	.....	.....	.....	.....
Garden Seed.....	.....	.....	250.00	.....	.....	.....	.....	.....	.....	.....	.....	.....	.....	.....	250.00
Fuel Distribution.....	.....	.....	1,291.43	.....	.....	.....	.....	.....	.....	.....	.....	.....	.....	.....	1,291.43
Total.....	238.1	911.0	\$ 17,949.50	\$ 5.74	43.6	\$ 2,617.87	\$ 5.01	281.7	\$ 19,025.94	\$ 5.63	46	\$ 102.23	.....	.....	\$ 19,128.17
Total Work & Direct Relief	575.6	2,369.7	\$ 68,286.01	\$ 11.94	51.4	\$ 3,422.87	\$ 6.57	627.0	\$ 71,708.88	\$ 6.57	46	\$ 102.23	.....	.....	\$ 71,811.11
Less Duplicated Cases.....	52.0	230.7	.....	.....	1.5	.....	.....	53.5	.....	.....	.....	.....	.....	.....	.....
Net Total, Section A.....	523.6	2,139.0	\$ 68,286.01	\$ 11.94	49.9	\$ 3,422.87	\$ 6.57	573.5	\$ 71,708.88	\$ 6.57	46	\$ 102.23	.....	.....	\$ 71,811.11
<b>Section B—Special Programs</b>															
Federal Grants in Aid															
Emergency Educ. Pro.†.....	.....	.....	.....	.....	1.5	\$ 37.50	\$ 12.50	1.5	\$ 37.50	\$ 12.50	.....	.....	.....	.....	\$ 37.50
College Student Pro.†.....	.....	.....	.....	.....	15.5	\$ 840.00	\$ 13.55	15.5	\$ 840.00	\$ 13.55	.....	.....	.....	.....	\$ 840.00
Homestead Rehabilitation.....	.....	.....	.....	.....	.....	.....	.....	.....	.....	.....	.....	.....	.....	.....	.....
Civil Works Service†.....	.....	.....	.....	.....	2.0	\$ 216.00	\$ 54.00	2.0	\$ 216.00	\$ 54.00	.....	.....	.....	.....	\$ 216.00
Total Section B.....	.....	.....	.....	.....	19.0	\$ 1,093.50	\$ 13.55	19.0	\$ 1,093.50	\$ 13.55	.....	.....	.....	.....	\$ 1,093.50
<b>Section C—Other Relief from County Funds</b>															
Poor Farm.....	.....	.....	.....	.....	14.8	\$ 4,483.67	\$ 25.19	14.8	\$ 4,483.67	\$ 25.19	.....	.....	.....	.....	\$ 4,483.67
Hospitalization.....	4.0	17.0	\$ 1,278.34	\$ 26.63	.....	.....	.....	4.0	\$ 1,278.34	\$ 26.63	.....	.....	.....	.....	\$ 1,278.34
Other Institutions.....	2.8	4.3	\$ 697.23	\$ 20.51	.....	.....	.....	2.8	\$ 697.23	\$ 20.51	.....	.....	.....	.....	\$ 697.23
Pensions.....	2.8	5.6	\$ 389.38	\$ 11.45	.....	.....	.....	2.8	\$ 389.38	\$ 11.45	.....	.....	.....	.....	\$ 389.38
Mothers' Aid.....	.....	.....	.....	.....	.....	.....	.....	.....	.....	.....	.....	.....	.....	.....	.....
Crippled Children.....	3.3	11.7	\$ 1,514.10	\$ 37.85	.....	.....	.....	3.3	\$ 1,514.10	\$ 37.85	.....	.....	.....	.....	\$ 1,514.10
All Other (Burials, etc.).....	3.4	10.7	\$ 939.90	\$ 22.92	.....	.....	.....	3.4	\$ 939.90	\$ 22.92	.....	.....	.....	.....	\$ 939.90
Total Section C.....	16.3	49.3	\$ 4,818.95	\$ 24.64	14.8	\$ 4,483.67	\$ 25.19	31.1	\$ 9,302.62	\$ 24.81	.....	.....	.....	.....	\$ 9,302.62
<b>Section D—Relief from Private Agencies</b>															
Red Cross.....	48.8	229.8	\$ 2,946.90	\$ 5.03	.....	.....	.....	48.8	\$ 2,946.90	\$ 5.03	.....	.....	.....	.....	\$ 2,946.90
Religious Organizations.....	10.0	50.0	\$ 251.89	\$ 2.10	.....	.....	.....	10.0	\$ 251.89	\$ 2.10	.....	.....	.....	.....	\$ 251.89
Fraternal Clubs.....	7.8	43.3	\$ 239.08	\$ 2.54	.....	.....	.....	7.8	\$ 239.08	\$ 2.54	.....	.....	.....	.....	\$ 239.08
Community Chest.....	.....	.....	.....	.....	.....	.....	.....	.....	.....	.....	.....	.....	.....	.....	.....
Associated Charities.....	.....	.....	.....	.....	.....	.....	.....	.....	.....	.....	.....	.....	.....	.....	.....
Welfare Boards.....	62.1	258.0	\$ 1,723.79	\$ 2.31	.....	.....	.....	62.1	\$ 1,723.79	\$ 2.31	.....	.....	.....	.....	\$ 1,723.79
Salvation Army.....	32.3	156.2	\$ 751.65	\$ 1.94	.....	.....	.....	32.3	\$ 751.65	\$ 1.94	.....	.....	.....	.....	\$ 751.65
Parent-Teachers Assn.....	.....	.....	.....	.....	.....	.....	.....	.....	.....	.....	.....	.....	.....	.....	.....
Other Agencies.....	7.7	26.6	\$ 247.20	\$ 2.69	.....	.....	.....	7.7	\$ 247.20	\$ 2.69	.....	.....	.....	.....	\$ 247.20
Total Section D.....	168.7	763.9	\$ 6,160.51	\$ 3.04	.....	.....	.....	168.7	\$ 6,160.51	\$ 3.04	.....	.....	.....	.....	\$ 6,160.51
<b>Section E—Relief from City Funds</b>															
Total Sections A to E, Incl.....	.....	.....	\$ 79,265.47	.....	.....	\$ 9,000.04	.....	.....	\$ 88,265.51	.....	.....	\$ 102.23	.....	.....	\$ 88,367.74
<b>Section F—Surp. Commodities—Est. Val.</b>															
Commodities Granted by†															
Fed. Surplus Relief Corp.....	.....	.....	\$ 8,265.54	.....	.....	.....	.....	.....	\$ 8,265.54	.....	.....	.....	.....	.....	\$ 8,265.54
Kansas Emer. Relief Com.....	.....	.....	9,690.69	.....	.....	.....	.....	.....	9,690.69	.....	.....	.....	.....	.....	9,690.69
Fuel Granted by†															
Fed. Surplus Relief Corp.....	.....	.....	512.83	.....	.....	.....	.....	.....	512.83	.....	.....	.....	.....	.....	512.83
Total Section F.....	.....	.....	\$ 18,469.06	.....	.....	.....	.....	.....	\$ 18,469.06	.....	.....	.....	.....	.....	\$ 18,469.06
Grand Total All Relief.....	.....	.....	\$ 97,734.53	.....	.....	\$ 9,000.04	.....	.....	\$ 106,734.57	.....	.....	\$ 102.23	.....	.....	\$ 106,836.80

\*Cases Included in Schedule III. †Cases Included in Schedule VI. ‡Case Averages Based on Actual Number of Months Program Was in Operation.



### II—SUMMARY OF ALL OBLIGATIONS INCURRED FOR RELIEF AND THE WORK RELIEF PROGRAM FOR YEAR 1934 AND CIVIL WORKS ADMINISTRATION FROM NOVEMBER 17, 1933, THROUGH JUNE 30, 1934

Consolidated Statement of All Obligations for These Purposes Against Federal, State, Local Public, Private and Private Welfare Agency Funds

ITEMS	Federal Funds	County Funds	City Funds	Township Funds	School Funds	Private Funds	Total Funds	State Funds	Private Agy. Funds	Grand Total
<b>Section A</b>										
Work Relief—Wages on Approved Projects	\$ 51,141.51						\$ 51,141.51			\$ 51,141.51
<b>Section B</b>										
<b>Non-Relief Obligations—Work Relief Pro.</b>										
<b>Materials</b>										
Aggregate Materials & Stone	\$ 134.55	\$ 721.90	\$ 368.72	\$ 119.21		\$ 244.08	\$ 1,588.46			\$ 1,588.46
Cement	175.50	331.10	24.43			100.95	631.98			631.98
Bituminous Materials		429.27	2,897.56				3,326.83			3,326.83
Petroleum Products	38.52	1,672.68	34.39	72.74		7.22	1,825.55			1,825.55
Iron & Steel	324.63	757.03	8,110.35			16.60	9,208.61			9,208.61
Clay Products			9.90			63.25	73.15			73.15
Lumber	358.03	66.17				90.44	494.64			494.64
Plumbing & Heating	7.94	85				9.90	18.69			18.69
Hardware	66.41	71.53		3.55		48.49	189.98			189.98
Explosives		49.04		75.51		7.45	132.00			132.00
Paint & Paint Materials		201.40	364.13				565.53			565.53
Total Materials	\$ 1,085.58	\$ 4,300.97	\$ 11,809.48	\$ 271.01		\$ 588.38	\$ 18,055.42			\$ 18,055.42
<b>Team, Truck &amp; Equipment Expense</b>										
Equipment Parts & Supplies	\$ 1,248.00	\$ 2,600.74	\$ 44.66				\$ 3,893.40			\$ 3,893.40
Office Supplies & Equipment		302.76					302.76			302.76
Rental of Equipment	2,402.82	4,731.63	69.18	524.14		1,054.20	8,781.97			8,781.97
Total Team, Truck & Equip. Exp.	\$ 3,650.82	\$ 7,635.13	\$ 113.84	\$ 524.14		\$ 1,054.20	\$ 12,978.13			\$ 12,978.13
<b>Other Costs</b>										
Tools		\$ 10.20	\$ 87.84	\$ 128.00		\$ 22.85	\$ 248.89			\$ 248.89
Rental of Premises		210.25					210.25			210.25
Other Services	536.66	907.17	151.97	67.85			1,663.65	49.56		1,713.21
Other Charges										
Miscellaneous	249.45	83.90	825.01	2.02			1,160.38			1,160.38
Total Other Costs	\$ 786.11	\$ 1,211.52	\$ 1,064.82	\$ 197.87		\$ 22.85	\$ 3,283.17	\$ 49.56		\$ 3,332.73
Wages & Salaries	\$ 7,400.30	\$ 16,777.20	\$ 1,754.98	\$ 1,473.01		\$ 616.50	\$ 28,021.99	\$ 49.59		\$ 28,071.58
Total Non-Relief Obligations	\$ 12,922.81	\$ 29,924.82	\$ 14,743.12	\$ 2,466.03		\$ 2,281.93	\$ 62,338.71	\$ 99.15		\$ 62,437.86
Total Sections A & B	\$ 64,064.32	\$ 29,924.82	\$ 14,743.12	\$ 2,466.03		\$ 2,281.93	\$ 113,480.22	\$ 99.15		\$ 113,579.37
<b>Section C</b>										
Additional County Work Relief	\$	\$	\$	\$	\$	\$	\$	\$	\$	\$
Direct Relief	1,541.43	19,128.17					20,669.60			20,669.60
Admin. Costs Prior to Admin. Projects										
Wages & Salaries		1,023.00					1,023.00			1,023.00
Other Costs		223.03					223.03			223.03
Total	\$	\$ 1,246.03	\$	\$	\$	\$	\$ 1,246.03	\$	\$	\$ 1,246.03
Total Section C	\$ 1,541.43	\$ 20,374.20	\$	\$	\$	\$	\$ 21,915.63	\$	\$	\$ 21,915.63
<b>Section D</b>										
Relief from Special Programs	\$ 1,093.50						\$ 1,093.50			\$ 1,093.50
Other Relief from County Funds		9,302.62					9,302.62			9,302.62
Other Relief from City Funds										
Relief from Private Welfare Agency Funds									6,160.51	6,160.51
Surplus Commodities & Fuel—Est. Value	18,469.06						18,469.06			18,469.06
Supplemental Administrative Salaries										
Total Section D	\$ 19,562.56	\$ 9,302.62	\$	\$	\$	\$	\$ 28,865.18	\$	\$ 6,160.51	\$ 35,025.69
Grand Total Sections A to D, Incl.	\$ 85,168.31	\$ 59,601.64	\$ 14,743.12	\$ 2,466.03	\$	\$ 2,281.93	\$ 164,261.03	\$ 99.15	\$ 6,160.51	\$ 170,520.69
<b>Section E</b>										
<b>Civil Works Administration</b>										
Payrolls	\$ 104,051.93	\$ 5,096.82	\$ 803.26	\$ 482.86	\$	\$	\$ 110,434.87	\$ 304.24		\$ 110,739.11
Other Costs	4,382.08	16,735.82	12,292.11	1,209.32		314.25	34,933.58	1,139.72		36,073.30
Total	\$ 108,434.01	\$ 21,832.64	\$ 13,095.37	\$ 1,692.18	\$	\$ 314.25	\$ 145,368.45	\$ 1,443.96		\$ 146,812.41
<b>Administration</b>										
Payrolls	\$ 3,891.97						\$ 3,891.97			\$ 3,891.97
Other Costs		257.07					257.07			257.07
Total	\$ 3,891.97	\$ 257.07	\$	\$	\$	\$	\$ 4,149.04	\$	\$	\$ 4,149.04
Total Civil Works Administration	\$ 112,325.98	\$ 22,089.71	\$ 13,095.37	\$ 1,692.18	\$	\$ 314.25	\$ 149,517.49	\$ 1,443.96		\$ 150,961.45
Grand Total	\$ 197,494.29	\$ 81,691.35	\$ 27,838.49	\$ 4,158.21	\$	\$ 2,596.18	\$ 313,778.52	\$ 1,543.11	\$ 6,160.51	\$ 321,482.14

### III—MONTHLY RECORD OF RESIDENT CASES SHOWING APPLICATIONS RECEIVED, CASES OPENED, ACTIVE AND INACTIVE CASES, AND CASES CLOSED FOR YEAR 1934

	Cases at Beginning of Mo.	Applications Rec'd	Total Cases Opened	New Cases Opened	Old Cases Re-Opened	Total Mo. Case Load	Cases Rec'd Relief	*Cases Homestead'd Rehab. Project	Cases Received No Relief	Total Cases Closed	Cases Closed Because Employ'd	Cases Closed Other Reasons	Cases Open End of Mo.	Cases Active End of Month	Cases Inactive End of Month
January	162	169	169	36	133	331	331	...	...	23	16	7	308	308	...
February	308	57	57	14	43	365	307	...	58	...	...	...	365	365	...
March	365	247	238	24	214	603	463	...	140	9	...	9	594	454	140
April	594	283	243	7	236	837	454	...	383	186	74	112	651	408	243
May	651	172	39	14	25	690	530	...	160	47	19	28	643	523	120
June	643	121	42	13	29	685	505	...	180	31	9	22	654	505	149
July	654	86	58	20	38	712	547	...	165	23	5	18	689	547	142
August	689	130	109	32	77	798	620	...	178	48	17	31	750	616	134
September	750	191	103	48	55	853	708	...	145	32	19	13	821	705	116
October	821	165	79	46	33	900	778	...	122	33	32	21	847	762	85
November	847	137	48	29	19	895	807	...	88	29	11	18	866	794	72
December	866	84	67	38	29	933	832	...	101	44	19	25	880	813	76

\*Included in Cases Receiving Relief.

### ALLEN COUNTY



SEWING ROOM-IOLA--24-DI-21



COUNTY BRIDGE-IOLA--24-B6-3

#### MAKING BEDDING FOR RELIEF CLIENTS

Women work relief clients of Allen county are shown tacking comforters in the sewing room located in a grade school building in Iola. This sewing room, which produced nearly a thousand garments during 1934, was considered one of the best in the second district. Women's garments, later distributed to relief clients as surplus commodities, were produced extensively at this sewing room.

#### ROAD IMPROVEMENTS AND WATER CONSERVATION

Road improvement projects have been outstanding in this county since the beginning of relief programs. At the upper right, a small concrete bridge has been built to provide adequate drainage on one of the county roads; lower right, a county road near La Harpe which has been graded and graveled. Local gravel pits provided materials.

The pond at right center is one of the largest of six farm ponds completed under the water conservation program. At the lower right relief clients are shown with their equipment for well cleaning. At a later date a pipe line was laid to improve the water system of La Harpe.



FARM POND--IOLA--24-E10-23



IMPROVING WATER SYSTEM-LA HARPE-24-B8-40



COUNTY ROAD-LA HARPE--24-B2-4



### IV—ANALYSIS OF PAYMENTS IN CASH OR IN KIND FOR ALL RELIEF GRANTED FROM FEDERAL, LOCAL PUBLIC, AND PRIVATE WELFARE AGENCY FUNDS—1934

ANALYSIS OF PAYMENTS IN KIND															
Source of Funds		Total Relief Extended	Payments in Cash	Payments for Which Type Not Defined	Payments in Kind	Food and Household Necessities	Shelter	Clothing	Fuel	Public Utilities	Medical Care	Institutional Care	Subsistence Crops	Feed for Stock	All Other
January	Federal.....	\$ 1,206.38	\$ 102.00	\$ .....	\$ 1,104.38	\$ 1,104.38	\$ .....	\$ .....	\$ .....	\$ 72	\$ 699.08	\$ 475.31	\$ .....	\$ .....	\$ .....
	County.....	3,175.17	114.00	1,597.06	3,175.17	1,270.63	59.75	38.75	455.43	72	699.08	475.31	248.17	248.17	175.50
	City.....	1,597.06	21.65	1,597.06	2,305.11	1,289.34	58.00	27.84	153.46	28.50	397.80	248.17	248.17	248.17	175.50
	Private Agencies.....	5,978.61	107.00	1,597.06	4,279.55	2,375.01	59.75	38.75	455.43	72	699.08	475.31	248.17	248.17	175.50
February	Federal.....	\$ 1,656.68	\$ 114.00	\$ .....	\$ 1,542.68	\$ 1,542.68	\$ .....	\$ .....	\$ .....	\$ .....	\$ .....	\$ .....	\$ .....	\$ .....	\$ .....
	County.....	3,175.17	114.00	1,542.68	3,175.17	1,270.63	59.75	38.75	455.43	72	699.08	475.31	248.17	248.17	175.50
	City.....	2,224.76	21.65	2,224.76	2,305.11	1,289.34	58.00	27.84	153.46	28.50	397.80	248.17	248.17	248.17	175.50
	Private Agencies.....	5,078.61	107.00	1,597.06	4,279.55	2,375.01	59.75	38.75	455.43	72	699.08	475.31	248.17	248.17	175.50
March	Federal.....	\$ 1,452.76	\$ 22.50	\$ .....	\$ 1,430.26	\$ 1,180.26	\$ 64.25	\$ 73.40	\$ 178.54	\$ 28.79	\$ 606.05	\$ 128.25	\$ 250.00	\$ .....	\$ 47.50
	County.....	2,464.14	35.96	1,366.21	2,428.18	1,557.90	64.25	73.40	178.54	28.79	606.05	128.25	250.00	250.00	47.50
	City.....	1,366.21	38.46	1,366.21	2,428.18	1,557.90	64.25	73.40	178.54	28.79	606.05	128.25	250.00	250.00	47.50
	Private Agencies.....	5,283.11	1,746.45	1,366.21	3,858.44	2,738.16	64.25	73.40	178.54	28.79	606.05	128.25	250.00	250.00	47.50
April	Federal.....	\$ 3,731.61	\$ 1,746.45	\$ .....	\$ 2,009.28	\$ 1,047.73	\$ 60.00	\$ 24.68	\$ 41.55	\$ 24.01	\$ 361.35	\$ 398.46	\$ 1.50	\$ .....	\$ 50.00
	County.....	2,009.28	1,746.45	789.85	2,009.28	1,047.73	60.00	24.68	41.55	24.01	361.35	398.46	1.50	1.50	50.00
	City.....	789.85	789.85	789.85	789.85	789.85	60.00	24.68	41.55	24.01	361.35	398.46	1.50	1.50	50.00
	Private Agencies.....	6,530.74	1,746.45	789.85	3,994.44	1,228.63	60.00	24.68	1,845.81	24.01	361.35	398.46	1.50	1.50	50.00
May	Federal.....	\$ 4,988.85	\$ 4,032.45	\$ .....	\$ 936.40	\$ 936.40	\$ 58.00	\$ 27.09	\$ 28.50	\$ 62.85	\$ 407.59	\$ 865.00	\$ .....	\$ .....	\$ 121.45
	County.....	2,432.73	4,032.45	2,432.73	2,432.73	862.25	58.00	27.09	28.50	62.85	407.59	865.00	865.00	865.00	121.45
	City.....	205.64	205.64	205.64	205.64	205.64	58.00	27.09	28.50	62.85	407.59	865.00	865.00	865.00	121.45
	Private Agencies.....	7,627.22	4,032.45	205.64	3,399.13	1,798.65	58.00	27.09	28.50	62.85	407.59	865.00	865.00	865.00	121.45
June	Federal.....	\$ 4,816.65	\$ 3,672.50	\$ .....	\$ 1,144.15	\$ 1,144.15	\$ .....	\$ .....	\$ .....	\$ .....	\$ .....	\$ .....	\$ .....	\$ .....	\$ .....
	County.....	1,714.53	8.00	1,714.53	1,706.53	785.89	42.95	21.18	30.50	60.64	298.80	446.58	1.40	1.40	18.59
	City.....	119.31	119.31	119.31	119.31	119.31	42.95	21.18	30.50	60.64	298.80	446.58	1.40	1.40	18.59
	Private Agencies.....	6,650.49	3,680.50	119.31	2,850.68	1,930.04	42.95	21.18	30.50	60.64	298.80	446.58	1.40	1.40	18.59
July	Federal.....	\$ 4,442.85	\$ 4,220.00	\$ .....	\$ 222.85	\$ 222.85	\$ 93.00	\$ 26.41	\$ 30.45	\$ 57.46	\$ 151.16	\$ 609.38	\$ .....	\$ .....	\$ 92.50
	County.....	1,911.35	8.00	1,911.35	1,903.35	842.99	93.00	26.41	30.45	57.46	151.16	609.38	609.38	609.38	92.50
	City.....	57.55	57.55	57.55	57.55	57.55	93.00	26.41	30.45	57.46	151.16	609.38	609.38	609.38	92.50
	Private Agencies.....	6,411.75	4,228.00	57.55	2,126.20	1,065.84	93.00	26.41	30.45	57.46	151.16	609.38	609.38	609.38	92.50
August	Federal.....	\$ 7,551.08	\$ 5,747.90	\$ .....	\$ 1,803.18	\$ 1,803.18	\$ 86.00	\$ 59.20	\$ 31.35	\$ 65.33	\$ 462.19	\$ 477.83	\$ .....	\$ 60	\$ 55.00
	County.....	2,163.60	38.00	2,163.60	2,125.60	888.10	86.00	59.20	31.35	65.33	462.19	477.83	477.83	477.83	55.00
	City.....	68.11	68.11	68.11	68.11	68.11	86.00	59.20	31.35	65.33	462.19	477.83	477.83	477.83	55.00
	Private Agencies.....	9,782.79	5,785.90	68.11	3,928.78	2,691.28	86.00	59.20	31.35	65.33	462.19	477.83	477.83	477.83	55.00
September	Federal.....	\$ 8,349.85	\$ 7,382.90	\$ .....	\$ 967.05	\$ 967.05	\$ 87.00	\$ 165.97	\$ 82.30	\$ 80.23	\$ 486.47	\$ 458.66	\$ .....	\$ 20	\$ 93.14
	County.....	2,435.76	82.00	2,435.76	2,353.76	893.69	87.00	165.97	82.30	80.23	486.47	458.66	458.66	458.66	93.14
	City.....	218.06	218.06	218.06	218.06	218.06	87.00	165.97	82.30	80.23	486.47	458.66	458.66	458.66	93.14
	Private Agencies.....	11,003.67	7,464.80	218.06	3,320.81	1,860.74	87.00	165.97	82.30	80.23	486.47	458.66	458.66	458.66	93.14
October	Federal.....	\$ 8,141.91	\$ 5,559.21	\$ .....	\$ 2,582.70	\$ 2,582.70	\$ 86.50	\$ 87.85	\$ 100.00	\$ 99.95	\$ 426.12	\$ 737.51	\$ .....	\$ .....	\$ 123.18
	County.....	2,691.17	78.00	2,691.17	2,613.17	922.91	86.50	87.85	100.00	99.95	426.12	737.51	737.51	737.51	123.18
	City.....	160.53	160.53	160.53	160.53	160.53	86.50	87.85	100.00	99.95	426.12	737.51	737.51	737.51	123.18
	Private Agencies.....	10,993.61	5,637.21	160.53	5,195.87	3,534.76	86.50	87.85	100.00	99.95	426.12	737.51	737.51	737.51	123.18
November	Federal.....	\$ 13,461.92	\$ 9,978.67	\$ .....	\$ 3,483.25	\$ 3,483.25	\$ 180.50	\$ 125.49	\$ 383.04	\$ 122.37	\$ 441.62	\$ 156.28	\$ .....	\$ .....	\$ 31.32
	County.....	2,518.87	107.38	2,518.87	2,411.49	970.87	180.50	125.49	383.04	122.37	441.62	156.28	156.28	156.28	31.32
	City.....	299.12	299.12	299.12	299.12	299.12	180.50	125.49	383.04	122.37	441.62	156.28	156.28	156.28	31.32
	Private Agencies.....	16,279.91	10,086.05	299.12	5,894.74	4,454.12	180.50	125.49	383.04	122.37	441.62	156.28	156.28	156.28	31.32
December	Federal.....	\$ 12,444.96	\$ 9,636.53	\$ .....	\$ 2,808.43	\$ 2,483.34	\$ 4.00	\$ 325.09	\$ 116.24	\$ 524.20	\$ 435.97	\$ .....	\$ .....	\$ .....	\$ 169.00
	County.....	2,689.43	98.00	2,689.43	2,601.43	928.91	4.00	28.74	384.37	116.24	524.20	435.97	435.97	435.97	169.00
	City.....	277.19	277.19	277.19	277.19	277.19	4.00	28.74	384.37	116.24	524.20	435.97	435.97	435.97	169.00
	Private Agencies.....	15,411.58	9,734.53	277.19	5,399.86	3,412.25	4.00	333.83	384.37	116.24	524.20	435.97	435.97	435.97	169.00
Year 1934	Federal.....	\$ 72,245.50	\$ 52,235.01	\$ .....	\$ 20,010.49	\$ 17,631.14	\$ 879.95	\$ 706.60	\$ 1,899.49	\$ 747.09	\$ 5,262.43	\$ 5,180.90	\$ 250.00	\$ 3.10	\$ 977.18
	County.....	28,430.79	476.99	28,430.79	27,953.80	12,290.36	879.95	706.60	1,899.49	747.09	5,262.43	5,180.90	5,180.90	5,180.90	977.18
	City.....	6,160.51	6,160.51	6,160.51	6,160.51	6,160.51	879.95	706.60	1,899.49	747.09	5,262.43	5,180.90	5,180.90	5,180.90	977.18
	Private Agencies.....	106,836.80	52,712.00	6,160.51	47,964.29	29,921.50	879.95	1,031.69	3,703.75	8747.09	5,262.43	5,180.90	253.10	6.70	977.18
	Grand Total.....	\$ 106,836.80	\$ 52,712.00	\$ 6,160.51	\$ 47,964.29	\$ 29,921.50	\$ 879.95	\$ 1,031.69	\$ 3,703.75	\$ 8747.09	\$ 5,262.43	\$ 5,180.90	\$ 253.10	\$ 6.70	\$ 977.18

\*Includes \$18,469.06 Estimated Valuation Surplus Commodities.

100

ALLEN COUNTY



### ALLEN COUNTY

101

#### V—ANALYSIS OF WORK RELIEF PROGRAM BY PROJECT—January 1, through December 31, 1934

Sponsor	Description of Project	Wages & Salaries		Team, Truck & Equip.		Materials	Other Costs	Distribution of Costs			Total Costs
		Relief	Non-Relief	Relief	Non-Relief			Federal Funds	State Funds	Local Contributions	
Cities											
Bassett	Repair, Reconst.—Streets, etc.	28.80				10.00		28.80		10.00	38.80
Humboldt	Repair, Reconst.—Streets, etc.	176.40						176.40			176.40
Humboldt	Repair, Reconst.—Pub. Utilities	3,498.30	58.80		110.18	3,001.91	133.48	3,698.15		3,104.52	6,802.67
Iola	Repair, Reconst.—Pub. Utilities	4,152.00	1,566.18		3.66	8,878.36	931.34	4,152.00		11,379.54	15,531.54
Iola	Cemetery Improvement	192.00	130.00			119.06				249.06	441.06
Humboldt	Prod. & Dist. of Goods to Needy (Wood Cutting)	219.60						219.60			219.60
Total City Projects		\$ 8,267.10	\$ 1,754.98	\$ 113.84	\$ 12,009.33	\$ 1,064.82		\$ 8,466.95		\$ 14,743.12	\$ 23,210.07
Townships											
Elm	Repair, Reconst.—Roads	950.40	506.12		217.94	51.60	15.22	950.40		790.88	1,741.28
Humboldt	Repair, Reconst.—Roads	1,111.20	286.80	4.20	81.40	43.70	37.20	1,115.40		449.10	1,564.50
Salem	Repair, Reconst.—Roads	1,702.80	100.31	2.40			68.75	1,705.20		169.06	1,874.26
Deer Creek	Repair, Reconst.—Roads	907.20	228.00		104.80	34.91	39.40	907.20		427.11	1,334.31
Carlyle	Repair, Reconst.—Roads	235.20	209.28		63.20	61.18	15.75	235.20		349.41	584.61
Osage	Repair, Reconst.—Roads	302.40	120.00		56.80	47.37	14.25	302.40		238.42	540.82
Marmaton	Repair, Reconst.—Roads	194.40	22.50			12.25	7.30	194.40		42.05	236.45
Total Township Projects		\$ 5,403.60	\$ 1,473.01	\$ 6.60	\$ 524.14	\$ 271.01	\$ 197.87	\$ 5,410.20		\$ 2,466.03	\$ 7,876.23
County											
Allen County											
Repair of Roads		\$22,357.80	\$ 12,295.08		\$ 9,243.62	\$ 4,022.62	\$ 634.39	\$ 24,272.62		\$ 24,280.89	\$ 48,553.51
Repair of Public Buildings		41.10						41.10			41.10
Repair of Bridges		2,480.25			8.77	228.13	15.55	2,480.25		454.55	2,934.80
Emergency Wells		2,378.40	287.00	430.80	1,752.15	844.58	8.85	5,627.13		74.65	5,701.78
Engineers (Water Conservation)			2,088.83				536.66	2,625.49			2,625.49
Engineers (Water Conservation)			269.00					269.00			269.00
Prod. & Dist. Gds. to Needy (Cloth.)		275.40	51.90		2.80	34.27	240.60	516.00		78.97	594.97
Community Sanitation		1,485.60				390.35	22.85	1,677.00		403.40	2,080.40
Garden & Farm Ponds—Non-Rel.		5,356.80	616.50	430.80	1,038.05	248.98		5,887.25		1,803.88	7,691.13
Pub. Ed. Arts & Res. (Cler.)		86.00	50.50					136.50			136.50
Pub. Ed. Arts & Res. (Cler.)			375.00					375.00			375.00
Administrative Projects		600.76	7,754.09		294.76	25.95	561.58	4,126.73		5,110.41	9,237.14
Total County Projects		\$35,062.11	\$ 23,990.00	\$ 1,053.00	\$ 12,340.15	\$ 5,775.08	\$ 2,020.48	\$ 48,034.07		\$ 32,206.75	\$ 80,240.82
State & Federal											
State, Location Water Supply Drought Area		88.80						88.80			88.80
State High. Dept., Repair, Reconst. of Hwy.		297.60	49.59				49.56	297.60	99.15		396.75
Fed. Hous. Ad. of Kans., Surv. of Houses											
Needing Repair		667.50	738.00					1,405.50			1,405.50
Homstd. Rehab. Div., Feeding, Transporting, etc., AAA Surplus Hogs		40.20						40.20			40.20
Nat. Em. Coun. & NRA, Labor Adjust. & Fair Trade Practice		126.00						126.00			126.00
St. Bd. Health, Collect & Class. Vital Stat.		45.00						45.00			45.00
K. S. C. Dept. Ag. & Ec., Determ. of Land Use & Ownership		84.00						84.00			84.00
State, Child Health			66.00					66.00			66.00
Total State & Federal Projects		\$ 1,349.10	\$ 853.59				\$ 49.56	\$ 2,153.10	\$ 99.15		\$ 2,252.25
Grand Total		\$50,081.91	\$ 28,071.58	\$ 1,059.60	\$ 12,978.13	\$ 18,055.42	\$ 3,332.73	\$ 64,064.32	\$ 99.15	\$ 49,415.90	\$ 113,579.37

\*Repair Does Not Include Maintenance.

#### VI—DISTRIBUTION OF COMMODITIES SUPPLIED BY FSRC AND KERC FOR THE YEAR 1934

	Unit of Measure	Amount Distributed	Max. Relief Cases		Actual Costs	Estimated Valuation	Total		Unit of Measure	Amount Distributed	Max. Relief Cases		Actual Costs	Estimated Valuation	Total
			In Any 1 Mo.	Actual Cases							In Any 1 Mo.	Actual Cases			
Commodities Furnished by FSRC															
Beef, Canned.....	Cans	4,032	619	\$.....	\$ 1,008.00	\$ 1,008.00		Sausage.....	Each	95	63	\$.....	\$.....	\$.....	\$.....
Blankets.....	Each	400	400		400.00	400.00		Mattresses*.....	Each					950.00	950.00
Butter.....	Pounds	8,584	834		2,146.00	2,146.00		Comforts*.....							
Cheese.....	Pounds							Pillow Cases*.....							
Flour.....	24lb Sacks	565	223		565.00	565.00		Sheets*.....							
Grain & Feed.....								Huck & Terry.....							
Lard.....	Pounds	6,510	626		585.90	585.90		Towels.....							
Milkwheat-O.....	Pounds	3,644	495		364.40	364.40		New Garments** Each.....	262	118			325.09	325.09	
Pork, Salt.....	Pounds	6,067	242		485.36	485.36		Old Garments**.....							
Pork, Smoked.....	Pounds	13,602	583		2,327.64	2,327.64		Total.....				\$.....	\$ 9,690.69	\$ 9,690.69	
Potatoes.....								Total Commodities.....				\$.....	\$17,956.23	\$17,956.23	
Rice.....	Pounds	2,064	720		123.84	123.84		Fuel Distribution—FSRC							
Sugar.....								Coal.....	Tons	105.50			\$	\$ 512.83	\$ 512.83
Tongue, Frozen.....	Pounds	2,504	709		259.40	259.40		Fuel Distribution—KERC							
Total.....				\$.....	\$ 8,265.54	\$ 8,265.54		Coal.....	Tons	186.00		930.00			930.00
Commodities Purchased by KERC								Gas.....	Cubic Feet	332,000		176.80			176.80
Beef, Fresh.....	Pounds	31,384	883	\$.....	\$ 4,707.60	\$ 4,707.60		Dist. Costs of FSRC							
Beef, Canned.....	11 1/2 lb Cans	18,540	798		3,708.00	3,708.00		Coal Paid by KERC.....				184.63			184.63
Cod Liver Oil.....	12 oz. Bottle							Total.....				\$ 1,291.43	\$ 512.83	\$ 1,804.26	
Eggs.....								Grand Total.....				\$ 1,291.43	\$18,469.06	\$19,760.49	
Flour.....								*Raw Materials Furnished by FSRC. Finished Products Accomplished under Work Projects.							
Grain & Feed.....	Bushels							**Materials Furnished for Work Projects from County Private Funds.							
Pork, Smoked.....															

#### VII—ANALYSIS OF COUNTY ADMINISTRATIVE COSTS—1934

	Non-Relief Payrolls		Relief Payrolls		Equipment Rental	Materials	Other Costs	Total Costs
	Aver. Monthly No. Employed	Earnings	Aver. Monthly No. Employ'd	Earnings				
Administrative Projects								
County Funds	6.0	\$4,138.12			\$294.76	\$25.95	\$561.58	\$ 5,020.41
Federal Funds	7.1	3,525.97	2.3	\$600.76				4,126.73
Additional Administration—County Funds*	4.7	1,023.00					223.03	1,246.03
Supplemental Salaries								
City Funds								
Private Funds**		90.00						90.00
Total Costs		\$8,777.09		\$600.76	\$294.76	\$25.95	\$784.61	\$10,483.17

\*Additional Administration January through March 31. \*\*\$90.00 Reported in Schedule II as Local Contributions.

VIII—ANALYSIS OF CIVIL WORKS ADMINISTRATION PROJECTS FOR THE ENTIRE PERIOD,  
NOVEMBER 17, 1933, THROUGH JUNE 30, 1934

FEDERAL FUNDS						SPONSORS' CONTRIBUTIONS				DISTRIBUTION OF COSTS		
Sponsor	Description of Project	Purchase Orders				Wages	Team-Track Equip. Exp.	Materials	Other Costs	Federal Funds	Local Funds	Gr'd Total Expenditures
		Wages	Team-Track Equip. Exp.	Team-Track Equip. Exp.	Materials							
Cities												
City of Elmore	Street Improvement	\$ 205.95	\$ -	\$ -	\$ -	\$ -	\$ 26.85	\$ 86.80	\$ 1.00	\$ 205.95	\$ 114.65	\$ 320.60
City of La Harpe	Street Improvement	504.15				2.40	58.58	352.50	5.55	504.45	410.03	923.80
City of Moran	Street Improvement	805.50			24.00	75.90	12.90	96.03	13.40	903.49	82.33	987.82
City of Basset	Street Improvement	615.00				29.96	37.00	88.86	66.50	644.96	412.63	1,057.59
City of Iowa	Work on Dump Grounds	1,233.05				146.22						
City of Iowa	Recreation of City Hall	1,489.15							1,528.23	4,305.52	1,528.59	5,834.11
City of Moran	Repair Jail-Clean City Dump	415.58							558.43	161.76	1,489.15	2,209.34
City of Elmore	Park Improvement					29.25			6.50	8.70	415.58	445.78
City of Moran	Park Improvement	131.63			211.50			19.50	4.00	400.00	561.00	984.50
City of Iowa	Improving Cemetery	378.00			165.00	32.00	37.50		18.00	343.30	48.36	391.66
City of Savonburg	Improving Cemetery	232.00				0.00	41.81		525.74	1.80	575.00	618.36
City of Humboldt	Renewing Gas Service Lines	2,641.50						34.66	31.75	1.05	440.20	549.77
City of Iowa	Map of Water & Water Plants	778.36							2,300.15	135.69	3,210.44	4,144.95
City of Elmore	Recess Gas Main	4,935.45						19.87		778.36	2,811.02	5,821.06
City of Moran	Imp. Water & Light System	367.13				1,346.12	563.72	34.61	4,068.45	1,065.30	6,280.57	7,872.38
City of Savonburg	Drainage Ditch	420.40					7.50	3.75	3.58	1.20	40.40	860.33
Total City Projects		\$17,457.55	\$ 1,576.55	\$ -	\$ 189.00	\$ -	\$ 803.26	\$ 271.50	\$ 8,377.71	\$ 3,642.90	\$ 21,546.93	\$ 33,495.37
Township												
Cottage Grove Twp.	Grade & Gravel Roads	\$ 432.20	\$ 1,182.44	\$ -	\$ -	\$ -	\$ 42.00	\$ 79.86	\$ 59.15	\$ 18.40	\$ 1,614.64	\$ 1,999.41
Elm Township	Quarry & Crush Rock	1,351.20					202.80	201.99	61.75	63.44	1,627.33	2,157.54
Logan Township	Gravel Roads	400.20					67.00	49.25	110.99	19.38	796.20	1,042.82
Salem Township	Gravel & Repair of Roads	306.00					85.25	122.75	21.80	6.85	534.25	770.90
Elmore Township	Quarry & Crush Rock	567.80					85.81	367.41	15.35	10.85	1,088.02	1,567.52
Total Township Projects		\$ 3,037.40	\$ 2,123.34	\$ -	\$ -	\$ -	\$ 482.86	\$ 821.26	\$ 269.04	\$ 119.02	\$ 5,180.74	\$ 6,872.92
County												
Allen County	Roads	\$64,290.20	\$ 9,555.65	\$1,814.00	\$ -	\$ -	\$5,021.92	\$4,747.73	\$ 3,180.96	\$ 6,268.57	\$ 75,660.36	\$ 95,879.44
Allen County	Cleaning & Painting Bridges	959.30					74.90		60.00		1,034.20	1,109.10
Allen County	Local CWA Office	2,013.47						87.35		169.72	2,013.47	2,270.54
Allen County	Poor Relief	711.73									171.75	883.48
Allen County	Re-employment Office	2,142.33					110.50	1,120.33	2,142.33		1,237.03	3,379.36
Total County Projects		\$69,577.56	\$ 9,555.65	\$1,814.00	\$ -	\$ -	\$5,096.82	\$4,945.58	\$ 4,487.00	\$ 7,560.22	\$ 80,947.21	\$ 100,066.92
State & Federal												
State	Roads	\$ 1,313.80	\$ -	\$ -	\$ -	\$ -	\$ 304.24	\$ 253.91	\$ -	\$ 885.81	\$ 1,313.80	\$ 2,757.76
State	Compensation	76.59									76.59	76.59
State	Sign Roads	243.45				55.25					298.70	343.95
State	Community Sanitation	1,419.19			100.50					32.96	1,004.69	1,106.05
Federal	Community Sanitation	1,249.75			106.92					1,256.67	212.89	1,569.56
Federal	Farm Mortgage & Land Value	600.65								600.65		600.65
Total State & Federal Projects		\$ 4,388.43	\$ 207.42	\$ -	\$ 55.25	\$ 55.25	\$ 304.24	\$ 253.91	\$ 245.85	\$ 954.21	\$ 4,651.10	\$ 6,400.31
Grand Total		\$94,480.94	\$13,462.96	\$2,003.00	\$2,379.08	\$6,648.18	\$6,292.25	\$13,379.69	\$12,276.35	\$11,235.98	\$17,878.47	\$150,961.91

IX—CIVIL WORKS ADMINISTRATION—EMPLOYMENT, MAN HOURS, AND WAGES FOR THE ENTIRE PERIOD, NOVEMBER 17, 1933, THROUGH JUNE 30, 1934

	Employment Data Covering Work Projects and Tool and Sundry Equipment Projects										Employment Data Covering Administrative Projects		Summary				
	All Payrolls Covering Projects Employing Principally Labor			All Payrolls Covering Drivers of Chief Fire Trucks, Trucks and Other Mechanical Equipment			Payrolls on Project Employing Chief Fire Trucks, Trucks and Other Mechanical Equip.			Payrolls for Employees of State & Local Administrative Proj.		Total Number Employees	Total Earnings, Salaries, and Hire	Accident Compensation		Grand Total	
	Average Weekly Man No. of Employees	Total Hours Worked	Total Wages Earned	Average Weekly Man No. of Employees	Total Hours Worked	Total Earnings- Wages-Hire	Average Weekly E p'ees	Salaries and No. of Wages Earned	Salaries and No. of Wages Earned	Average Weekly E p'ees	Salaries and No. of Wages Earned	Weekly Average	Total	Average Weekly Wage	Average Number Men		Total Amount
Allien County																	
Total 1933 .....	651.1	86,577	\$35,292.37	7.8	853	\$ 473.00	0.5	\$ 60.12	9.0	\$ 829.03	668.4	\$ 36,654.54	\$ 9.14	...	\$ . . . . .		\$ 36,654.54
-First 3 Mo. 1934.....	442.0	118,998	51,999.43	62.4	12,625	13,727.78	4.5	997.86	13.0	2,942.75	921.79	69,867.82	10.27	0.7	70.84	69,738.66	
-Second 3 Mo. 1934....	13.5	2,567	1,070.20	0.4	65	88.25	1.2	206.33	7.8	120.17	15.5	1,544.95	7.50	0.1	5.75	1,550.70	
Total.....	307.0	208,142	\$88,362.00	27.0	13,543	\$14,289.03	2.4	\$1,324.31	2.3	\$3,891.97	343.7	\$107,867.31	\$ 9.80	0.3	\$76.59	\$107,943.90	



### ANDERSON COUNTY

103

Board of County Commissioners—Burt F. Wright, Chairman, Garnett; Theodore Sherer, Colony; Andy McAdam, Kincaid.

County Emergency Relief Committee—Bert L. Woods, Chairman, Garnett; John V. Schafges, Colony; Burt F. Wright, Garnett; Orion C. Brosius, Kincaid; Theodore Sherer, Colony.

County Poor Commissioner—Samuel S. Irwin; County Case Supervisor—Ruth A. Campbell; Supervisor of Work Program—Fred A. Gardner (December, 1934).

Assessed Valuation—\$19,473,949 (March 1, 1934); Bonded Indebtedness—\$34,221.50 (October 1, 1934); Population—12,706 (March, 1934); Total Population on Relief—1,563; Per Cent—12.3 (December, 1934).

#### EXPENDITURES FOR RELIEF AND CWA FROM ALL SOURCES, 1934\*

	Relief Program	CWA Program	Total
Total County Funds.....	\$ 25,342.02	\$.....	\$ 25,342.02
Total Township Funds.....	.....	.....	.....
Total City Funds.....	.....	.....	.....
Total School Funds.....	.....	.....	.....
Total Privately Raised Funds.....	827.15	.....	827.15
Total State Funds.....	.....	385.16	385.16
Total Federal Funds.....	43,046.57	46,696.51	89,743.08
Total.....	\$ 69,215.74	\$ 47,081.67	\$116,297.41

#### EXPENDITURES FOR RELIEF AND CWA FROM ALL SOURCES, 1924-1933\*

	Relief Program	CWA Program	Total
Total County Funds.....	\$129,027.75	\$.....	\$129,027.75
Total Private Funds.....	8,552.72	.....	8,552.72
Total City Funds.....	309.85	.....	309.85
Total Federal Funds.....	22,968.13	25,094.40	48,062.53
Total.....	\$160,858.45	\$ 25,094.40	\$185,952.85

\*Excludes All Non-relief Obligations Except Payrolls.

#### WORK RELIEF AND CWA, OCTOBER, 1932, THROUGH DECEMBER, 1934

Work relief projects under the CWA and work relief programs were almost entirely confined to road and bridge building in Anderson county. Approximately 95 per cent of the CWA funds in this county was spent for road work on a definite program for extending a correlated road system, serving as feeders to state highways and trade routes to the county seat, Garnett.

A report on accomplishments, dating from October 15, 1932, to December 31, 1934, shows that 20 miles of state highways were improved, three miles of county and township roads were graded and surfaced, 90 miles were surfaced, and 10 miles graded. Besides this, 128 blocks of streets were improved at Garnett, Greeley, and Westphalia, three bridges were built, and 18 small culverts were installed.

The county courthouse at Garnett, the city hall at Kincaid, and the city park at Westphalia were improved. Work was done on the airport at Garnett and two timber clearing projects were in operation. Sewing rooms were established at Garnett and Welda as work relief projects for women.

Under the water conservation program eight emergency wells were constructed at Colony, in Reeder township, and elsewhere in the county, 16 emergency pumping plants were set up, and four farm ponds constructed.

Work relief projects became increasingly important during the latter part of 1934 due to extreme drought conditions. The grain crops were almost a total failure, and as a result, the greater part of the tenant farmers were thrown on relief, according to the county relief administration. Only a few industries furnished employment during the year. A rock crusher which usually employed 50 men and the furniture factory at Garnett, normally employing about 100 persons, both were closed down. The poultry packing establishment in Garnett reduced its payroll from approximately 75 persons to about 25 to 30. Few or no laborers were required by other industries.

Local relief authorities report that the work of the case supervisor and case workers has been one of the outstanding factors in the development of a public welfare service. Approximately 250 former relief clients had been removed from the relief rolls and assisted to become self-sustaining by the close of the year owing to the work of these county employees.

### I—ANALYSIS OF ALL RELIEF GRANTED FROM FEDERAL, LOCAL PUBLIC, AND PRIVATE WELFARE AGENCY FUNDS—1934

ITEMS	RESIDENT FAMILIES			RESIDENT SINGLES			RESIDENT TOTAL			TRANSIENTS		GRAND TOTAL
	Aver. Mo. No. Cases	Aver. Mo. No. Persons Rept.	Amount	Aver. Mo. No. Cases	Amount	Per Case	Aver. Mo. No. Cases	Amount	Per Case	Actual No. Persons	Amount	All Relief Granted
<b>Section A—Work and Direct Relief</b>												
Approved Work Projects												
Federal Funds.....	164.0	689.0	\$ 28,206.90	6.8	\$ 869.50	\$ 10.59	170.8	\$ 29,076.40	\$ 14.18	.....	.....	\$ 29,076.40
County Funds.....	.....	.....	.....	.....	.....	.....	.....	.....	.....	.....	.....	.....
Total.....	164.0	689.0	\$ 28,206.90	6.8	\$ 869.50	\$ 10.59	170.8	\$ 29,076.40	\$ 14.18	.....	.....	\$ 29,076.40
Additional County Projects.....	.....	.....	.....	.....	.....	.....	.....	.....	.....	.....	.....	.....
Total Work Relief.....	164.0	689.0	\$ 28,206.90	6.8	\$ 869.50	\$ 10.59	170.8	\$ 29,076.40	\$ 14.18	.....	.....	\$ 29,076.40
Direct Relief												
County Funds.....	80.1	317.1	\$ 6,815.91	7.09	\$ 1,542.31	\$ 7.28	97.8	\$ 8,358.22	\$ 7.12	44	\$ 33.25	\$ 8,391.47
Federal Funds.....	.....	.....	.....	.....	.....	.....	.....	.....	.....	.....	.....	.....
Garden Seed*.....	.....	.....	161.00	.....	.....	.....	.....	161.00	.....	.....	.....	161.00
Fuel Distribution†.....	.....	.....	.....	.....	.....	.....	.....	.....	.....	.....	.....	.....
Total.....	80.1	317.1	\$ 6,976.91	17.7	\$ 1,542.31	.....	97.8	\$ 8,519.22	.....	44	\$ 33.25	\$ 8,552.47
Total Work & Direct Relief	244.1	1,006.1	\$ 35,183.81	24.5	\$ 2,411.81	.....	268.6	\$ 37,595.62	.....	44	\$ 33.25	\$ 37,628.87
Less Duplicated Cases.....	26.3	127.4	.....	0.6	.....	.....	.....	.....	.....	.....	.....	.....
Net Total, Section A.....	217.8	878.7	\$ 35,183.81	23.9	\$ 2,411.81	.....	241.7	\$ 37,595.62	.....	44	\$ 33.25	\$ 37,628.87
<b>Section B—Special Programs</b>												
Federal Grants in Aid												
Emergency Educ. Pro.‡.....	.....	.....	.....	5.0	\$ 240.00	\$ 24.00	5.0	\$ 240.00	\$ 24.00	.....	.....	\$ 240.00
College Student Pro.‡.....	.....	.....	.....	.....	.....	.....	.....	.....	.....	.....	.....	.....
Homestead Rehabilitation‡.....	.....	.....	.....	12.1	539.65	21.59	12.1	539.65	21.59	.....	.....	539.65
Civil Works Service.....	.....	.....	.....	17.1	\$ 779.65	.....	17.1	\$ 779.65	.....	.....	.....	\$ 779.65
Total Section B.....	.....	.....	.....	.....	.....	.....	.....	.....	.....	.....	.....	.....
<b>Section C—Other Relief from County Funds</b>												
Poor Farm.....	.....	.....	.....	15.9	\$ 3,682.53	\$ 19.28	15.9	\$ 3,682.53	\$ 19.28	.....	.....	\$ 3,682.53
Hospitalization.....	2.2	11.8	1,142.11	43.93	.....	.....	2.2	1,142.11	43.93	.....	.....	1,142.11
Other Institutions.....	1.2	1.2	403.00	28.79	.....	.....	1.2	403.00	28.79	.....	.....	403.00
Pensions.....	.....	.....	.....	.....	.....	.....	.....	.....	.....	.....	.....	.....
Mothers' Aid.....	.....	.....	.....	.....	.....	.....	.....	.....	.....	.....	.....	.....
Crippled Children.....	3.6	16.9	2,249.84	52.32	.....	.....	3.6	2,249.84	52.32	.....	.....	2,249.84
All Other (Burials, etc.).....	1.1	4.3	643.25	49.48	.....	.....	1.1	643.25	49.48	.....	.....	643.25
Total Section C.....	8.1	34.2	\$ 4,438.20	\$ 45.66	15.0	\$ 3,682.53	\$ 19.28	24.0	\$ 8,120.73	\$ 28.20	.....	\$ 8,120.73
<b>Section D—Relief from Private Agencies</b>												
Red Cross.....	15.4	92.8	\$ 337.95	1.83	.....	.....	15.4	\$ 337.95	1.83	.....	.....	\$ 337.95
Religious Organizations.....	15.1	60.0	124.92	.69	.....	.....	15.1	124.92	.69	.....	.....	124.92
Fraternal Clubs.....	.....	.....	.....	.....	.....	.....	.....	.....	.....	.....	.....	.....
Community Chest.....	.....	.....	.....	.....	.....	.....	.....	.....	.....	.....	.....	.....
Associated Charities.....	16.5	97.2	208.55	1.05	.....	.....	16.5	208.55	1.05	.....	.....	208.55
Welfare Boards.....	.....	.....	.....	.....	.....	.....	.....	.....	.....	.....	.....	.....
Salvation Army.....	.....	.....	.....	.....	.....	.....	.....	.....	.....	.....	.....	.....
Parent-Teachers Assn.....	.....	.....	.....	.....	.....	.....	.....	.....	.....	.....	.....	.....
Other Agencies.....	1.2	4.0	28.86	2.06	.....	.....	1.2	28.86	2.06	.....	.....	28.86
Total Section D.....	48.2	253.9	\$ 700.28	\$ 1.21	.....	.....	48.1	\$ 700.28	\$ 1.21	.....	.....	\$ 700.28
<b>Section E—Relief from City Funds</b>												
Total Sections A to E, Incl.....	.....	.....	\$ 40,322.29	.....	\$ 6,873.99	.....	.....	\$ 47,196.28	.....	.....	\$ 33.25	\$ 47,229.53
<b>Section F—Surp. Commodities—Est. Val.</b>												
Commodities Granted by†												
Fed. Surplus Relief Corp.....	.....	.....	\$ 4,571.57	.....	.....	.....	.....	\$ 4,571.57	.....	.....	.....	\$ 4,571.57
Kansas Emer. Relief Com.....	.....	.....	3,461.14	.....	.....	.....	.....	3,461.14	.....	.....	.....	3,461.14
Fuel Granted by†												
Fed. Surplus Relief Corp.....	.....	.....	.....	.....	.....	.....	.....	.....	.....	.....	.....	.....
Total Section F.....	.....	.....	\$ 8,032.71	.....	.....	.....	.....	\$ 8,032.71	.....	.....	.....	\$ 8,032.71
<b>Grand Total All Relief</b> .....	.....	.....	\$ 48,355.00	.....	\$ 6,873.99	.....	.....	\$ 55,228.99	.....	.....	\$ 33.25	\$ 55,262.24

\*Cases Included in Schedule III. †Cases Included in Schedule VI. ‡Case Averages Based on Actual Number of Months Program Was in Operation.



### ANDERSON COUNTY

## II-- SUMMARY OF ALL OBLIGATIONS INCURRED FOR RELIEF AND THE WORK RELIEF PROGRAM FOR YEAR 1934 AND CIVIL WORKS ADMINISTRATION FROM NOVEMBER 17, 1933, THROUGH JUNE 30, 1934

Consolidated Statement of All Obligations for These Purposes Against Federal, State, Local Public, Private and Private Welfare Agency Funds

ITEMS	Federal Funds	County Funds	City Funds	Township Funds	School Funds	Private Funds	Total Funds	State Funds	Private Agcy. Funds	Grand Total All Funds
<b>Section A</b>										
Work Relief--Wages on Approved Projects.	\$ 29,076.40						\$ 29,076.40			\$ 29,076.40
<b>Section B</b>										
<b>Non-Relief Obligations--Work Relief Pro.</b>										
<b>Materials</b>										
Aggregate Materials & Stone.	\$ 279.50	\$ 688.22	\$ 289.96				\$ 1,257.68			\$ 1,257.68
Cement.	257.83	593.13	134.65				985.61			985.61
Bituminous Materials.		6.50					6.50			6.50
Petroleum Products.		68					68			68
Iron & Steel.		202.28	14.60				216.88			216.88
Clay Products.			235.90				235.90			235.90
Lumber.	19.83	166.25	72.31				258.39			258.39
Plumbing & Heating.						20.20	20.20			20.20
Hardware.	7.42	4.40	75			72.55	84.37			84.37
Explosives.		73.95	5.70			18.00	97.65			97.65
Paint & Paint Materials.		5.00	5.00			1.40	11.40			11.40
Total Materials.	\$ 565.33	\$ 1,740.41	\$ 758.87			\$ 112.65	\$ 3,177.26			\$ 3,177.26
<b>Team, Truck, &amp; Equipment Expense</b>										
Equipment Parts & Supplies.		1.00					1.30			1.30
Office Supplies & Equipment.		40.02					40.02			40.02
Rental of Equipment.	1,423.78	8,857.04	452.70				10,806.06			10,806.06
Total Team, Truck, & Equip. Exp.	\$ 1,423.78	\$ 8,898.06	\$ 452.70			\$ 72.84	\$ 10,847.38			\$ 10,847.38
<b>Other Costs</b>										
Tools.		75	9.03	60.60			70.38			70.38
Rental of Premises.										
Other Services.		970.63					970.63			970.63
Other Charges.										
Miscellaneous.	295.66	277.37					573.03			573.03
Total Other Costs.	\$ 295.66	\$ 1,257.03	\$ 60.60				\$ 1,614.04			\$ 1,614.04
Wages & Salaries.	\$ 4,996.81	\$ 8,201.04					\$ 13,224.72			\$ 13,224.72
Total Non-Relief Obligations.	\$ 7,282.33	\$ 20,096.54	\$ 1,272.17			\$ 126.87	\$ 28,963.40			\$ 28,963.40
Total Sections A & B.	\$ 36,358.73	\$ 20,096.54	\$ 1,272.17			\$ 312.36	\$ 58,039.80			\$ 58,039.80
<b>Section C</b>										
Additional County Work Relief.										
Direct Relief.	161.00	8,391.47					8,552.47			8,552.47
Admin. Costs Prior to Admin. Projects.										
Wages & Salaries.		628.78					628.78			628.78
Other Costs.		222.81					222.81			222.81
Total.		\$ 851.59					\$ 851.59			\$ 851.59
Total Section C.	\$ 161.00	\$ 9,243.06					\$ 9,404.06			\$ 9,404.06
<b>Section D</b>										
Relief from Special Programs.	\$ 779.65						\$ 779.65			\$ 779.65
Other Relief from County Funds.		8,120.73					8,120.73			8,120.73
Other Relief from City Funds.										
Relief from Private Welfare Agency Funds.										
Surplus Commodities & Fuel--Est. Value.	8,032.71						8,032.71			8,032.71
Supplemental Administrative Salaries.										
Total Section D.	\$ 8,812.36	\$ 8,120.73					\$ 16,933.09			\$ 16,933.09
Grand Total Sections A to D, Incl.	\$ 45,332.09	\$ 37,460.33	\$ 1,272.17			\$ 312.36	\$ 84,376.95			\$ 85,077.23
<b>Section E</b>										
<b>Civil Works Administration</b>										
<b>Work Projects</b>										
Payrolls.	\$ 68,806.31						\$ 68,806.31	\$ 385.16		\$ 69,191.47
Other Costs.	2,978.56	19,261.52	435.98				22,676.06	160.22		22,836.28
Total.	\$ 71,784.87	\$ 19,261.52	\$ 435.98				\$ 91,482.37	\$ 545.38		\$ 92,027.75
<b>Administration</b>										
Payrolls.	\$ 2,984.60						\$ 2,984.60			\$ 2,984.60
Other Costs.										
Total.	\$ 2,984.60						\$ 2,984.60			\$ 2,984.60
Total Civil Works Administration.	\$ 74,769.47	\$ 19,261.52	\$ 435.98				\$ 94,466.97	\$ 545.38		\$ 95,012.35
Grand Total.	\$ 120,101.56	\$ 56,721.85	\$ 1,708.15			\$ 312.36	\$ 178,843.92	\$ 700.28		\$ 180,089.58

## III--MONTHLY RECORD OF RESIDENT CASES SHOWING APPLICATIONS RECEIVED, CASES OPENED, ACTIVE AND INACTIVE CASES, AND CASES CLOSED FOR YEAR 1934

	Cases at Beginning of Mo.	Applica-tions Rec'd	Total Cases Opened	New Cases Opened	Old Cases Re-Opened	Total Mo. Case Load	Cases Rec'd Relief	*Cases Homest'd Rehab. Project	Cases Received No Relief	Total Cases Closed	Cases Closed Because Employ't	Cases Closed Other Reasons	Cases Open End of Mo.	Cases Active End of Month	Cases Inactive End of Month
January	73	22	22	4	18	95	95	...	...	14	...	14	81	81	...
February	81	19	19	5	14	100	100	...	...	9	...	4	96	96	...
March	96	20	20	4	16	116	116	...	...	4	...	9	107	103	4
April	107	390	390	33	357	497	348	...	149	63	40	23	434	293	141
May	434	...	...	...	...	434	278	...	156	160	24	136	274	274	...
June	274	...	...	...	...	306	251	...	55	23	15	8	283	251	32
July	283	75	68	5	63	351	290	...	121	95	17	78	256	230	26
August	256	59	40	13	27	296	234	...	62	44	23	21	252	234	18
September	252	74	57	13	44	309	265	...	44	29	19	10	280	260	20
October	280	95	61	28	33	341	304	...	37	17	13	4	324	304	20
November	324	108	29	6	23	353	322	...	31	7	4	3	346	322	24
December	346	100	52	17	35	398	358	...	40	12	2	10	386	358	28

\*Included in Cases Receiving Relief.

## ANDERSON COUNTY



GARNETT MUNICIPAL AIRPORT—52-B15-9



EMERGENCY COMMUNITY WELL & PUMP—52-B24-16



### IV—ANALYSIS OF PAYMENTS IN CASH OR IN KIND FOR ALL RELIEF GRANTED FROM FEDERAL, LOCAL PUBLIC, AND PRIVATE WELFARE AGENCY FUNDS—1934

Source of Funds	Total Relief Extended	Payments in Cash	Payments For Which Type Not Defined	Payments in Kind	ANALYSIS OF PAYMENTS IN KIND									
					Food and Household Necessities	Shelter	Clothing	Fuel	Public Utilities	Medical Care	Institutional Care	Subsistence Crops	Feed for Stock	All Other
January—Federal.....	\$ 1,154.77	\$ 223.50		\$ 931.27	\$ 869.87		\$ 61.40			\$ 570.49	\$ 246.43			\$ 40.00
County.....	1,450.93			1,450.93	476.72		117.29							
City.....	92.92		92.92											
Private Agencies.....	2,698.62	223.50	92.92	2,382.20	1,346.59		178.69			570.49	246.43			40.00
February—Federal.....	\$ 1,005.50	\$ 316.15		\$ 689.35	\$ 664.80		\$ 24.55			\$ 409.39	\$ 314.16			
County.....	1,223.26	98.40		1,124.86	346.60	19.80		34.91						
City.....														
Private Agencies.....	44.66		44.66											
March—Federal.....	\$ 2,273.42	\$ 414.55	\$ 44.66	\$ 1,814.21	\$ 1,011.40	\$ 19.80	\$ 24.55	\$ 34.91	\$ 409.39	\$ 314.16				
County.....	1,249.12	114.00		1,135.12	901.22		27.90			42.00		161.00		
City.....	1,425.34	111.65		1,313.69	352.85	6.00	22.27	35.45			353.43			99.00
Private Agencies.....	67.16		67.16											
April—Federal.....	\$ 2,738.62	\$ 223.55	\$ 67.16	\$ 2,445.81	\$ 1,254.07	\$ 6.00	\$ 50.17	\$ 35.45	\$ 488.69	\$ 353.43	\$ 161.00			\$ 99.00
County.....	2,682.59	2,337.60		344.99	305.44		39.55			459.04	380.02			61.69
City.....	1,466.92	99.00		1,367.92	443.35	1.20	5.90	16.72						
Private Agencies.....	67.01		67.01											
May—Federal.....	\$ 4,216.52	\$ 2,436.60	\$ 67.01	\$ 1,712.91	\$ 748.79	\$ 1.20	\$ 45.45	\$ 16.72	\$ 459.04	\$ 380.02				\$ 61.69
County.....	2,205.97	2,011.15		194.82	194.82					511.95	263.21	85		
City.....	1,400.97	84.00		1,316.97	491.63	22.00	19.66	7.67						
Private Agencies.....	44.96		44.96											
June—Federal.....	\$ 3,651.90	\$ 2,095.15	\$ 44.96	\$ 1,511.79	\$ 686.45	\$ 22.00	\$ 19.66	\$ 7.67	\$ 511.95	\$ 263.21	85			
County.....	2,082.02	2,114.05		867.97	867.97					633.75	248.01			60.00
City.....	1,432.10	99.50		1,332.60	294.10	60.04	28.83	7.87						
Private Agencies.....	10.41		10.41											
July—Federal.....	\$ 4,424.53	\$ 2,213.55	\$ 10.41	\$ 2,200.57	\$ 1,162.07	\$ 60.04	\$ 28.83	\$ 7.87	\$ 633.75	\$ 248.01				\$ 60.00
County.....	2,239.15	2,183.50		55.65	54.90		75			532.10	316.31			96.00
City.....	1,409.03	109.50		1,299.53	324.25	15.00	13.12	2.75						
Private Agencies.....	10.41		10.41											
August—Federal.....	\$ 3,658.59	\$ 2,293.00	\$ 10.41	\$ 1,355.18	\$ 379.15	\$ 15.00	\$ 13.87	\$ 2.75	\$ 532.10	\$ 316.31				\$ 96.00
County.....	4,475.90	3,368.65		1,107.25	1,107.25					467.42	289.50			88.00
City.....	1,370.77	116.50		1,254.27	367.35	35.00	50	6.50						
Private Agencies.....	19.56		19.56											
September—Federal.....	\$ 5,866.23	\$ 3,485.15	\$ 19.56	\$ 2,361.52	\$ 1,474.60	\$ 35.00	\$ 50	\$ 6.50	\$ 467.42	\$ 289.50				\$ 88.00
County.....	3,734.49	3,604.25		130.21	44.55		85.66			284.67	506.66			74.65
City.....	1,416.31	126.50		1,289.81	294.80	37.85	96.93	24.25						
Private Agencies.....	40.66		40.66											
October—Federal.....	\$ 5,191.43	\$ 3,730.75	\$ 40.66	\$ 1,420.02	\$ 339.35	\$ 37.85	\$ 152.59	\$ 24.25	\$ 284.67	\$ 506.66				\$ 74.65
County.....	4,300.71	3,806.95		493.76	459.60		34.16			189.18	183.98			93.00
City.....	1,054.09	119.25		934.84	349.35	49.00	41.33	29.00						
Private Agencies.....	79.11		79.11											
November—Federal.....	\$ 5,433.91	\$ 3,926.20	\$ 79.11	\$ 1,428.60	\$ 808.95	\$ 49.00	\$ 75.49	\$ 29.00	\$ 189.18	\$ 183.98				\$ 93.00
County.....	5,422.86	4,617.50		805.36	746.80		58.56			159.60	380.54			82.25
City.....	1,090.48	64.00		1,026.48	309.10	19.00	40.99	35.00						
Private Agencies.....	80.36		80.36											
December—Federal.....	\$ 6,593.70	\$ 4,681.50	\$ 80.36	\$ 1,831.84	\$ 1,055.90	\$ 19.00	\$ 99.55	\$ 35.00	\$ 159.60	\$ 380.54				\$ 82.25
County.....	6,599.71	5,158.75		1,440.96	1,358.55		42.41	40.00		631.55	603.28			
City.....	1,772.00	74.00		1,698.00	316.91	30.85	43.60	71.81						
Private Agencies.....	143.05		143.05											
Year 1934—Federal.....	\$ 8,514.77	\$ 5,232.75	\$ 143.05	\$ 3,138.96	\$ 1,675.46	\$ 30.85	\$ 90.01	\$ 111.81	\$ 631.55	\$ 603.28				
County.....	38,049.76	29,856.05		8,193.71	7,575.77		374.94	40.00		42.00		161.00		
City.....	16,512.20	1,102.30		15,409.90	4,367.01	295.74	400.42	271.93		5,293.83	4,085.53	85		694.59
Private Agencies.....	700.28		700.28											
Grand Total.....	\$ 55,262.24*	\$ 30,958.35	\$ 700.28	\$ 23,603.61*	\$ 11,942.78	\$ 295.74	\$ 775.36	\$ 311.93	\$ 5,335.83	\$ 4,085.53	\$ 161.85			\$ 694.59

\*Includes \$8,032.71 Estimated Valuation Surplus Commodities.



### ANDERSON COUNTY

107

#### V—ANALYSIS OF WORK RELIEF PROGRAM BY PROJECT—January 1, through December 31, 1934

Sponsor	Description of Project	Wages & Salaries		Team, Truck & Equip.		Materials	Other Costs	Distribution of Costs			Total Costs
		Relief	Non-Relief	Relief	Non-Relief			Federal Funds	State Funds	Local Contributions	
Cities											
Westphalia	Repair*, Reconst.—Streets, etc.	\$ 768.35	\$	\$ 14.40	\$	\$ 328.81	\$ 38.50	\$ 782.75	\$	\$ 367.31	\$ 1,150.06
Garnett	Repair, Reconst.—Streets, etc.	930.30		24.00	275.00	168.61	22.10	954.30		465.71	1,420.01
Greeley	Repair, Reconst.—Streets, etc.	740.40			271.18	261.45		833.88		439.15	1,273.03
Garnett	Construction of Airports	2,752.00		559.60	124.00	239.23	.75	3,675.58			3,675.58
Total City Projects		\$ 5,191.05	\$	\$ 598.00	\$ 670.18	\$ 998.10	\$ 61.35	\$ 6,246.51	\$	\$ 1,272.17	\$ 7,518.68
County											
Anderson County											
	Repair of Roads	\$17,363.30	\$ 6,180.96	\$ 311.40	\$ 8,809.44	\$ 1,740.41	\$ 9.03	\$ 17,674.70	\$	\$ 16,739.84	\$ 34,414.54
	Repair of Public Buildings	48.00						48.00			48.00
	Repair of Public Buildings	392.30					13.62	392.30		13.62	405.92
	Repair of Public Buildings	28.00				22.60		50.60			50.60
	Emergency Wells	1,575.10		6.40	91.80			1,673.30			1,673.30
	Engineers (Water Conservation)		965.00				7.50	965.00		7.50	972.50
	Prod. & Dist. Gds. to Needy (Cloth.)	1,270.70					190.12	1,416.09		44.73	1,460.82
	Prod. & Dist. Gds. to Needy (Cloth.)	179.20					150.27	329.47			329.47
	Prod. & Dist. Gds. to Needy (Cloth.)	190.80						190.80			190.80
	Prod. & Dist. Gds. to Needy (Wood)	141.60						141.60			141.60
	Prod. & Dist. Gds. to Needy (Garden)	64.80			48.60			113.40		48.60	190.20
	Public Welfare (Nursing)	168.80						168.80			168.80
	Pub. Wel. Gar. & Farm Ponds (Non-relief)	525.80	126.87	6.40	1,187.34	416.15		1,950.20		312.36	2,262.56
	Pub. Ed. Arts & Res. (Clerical)	101.70	270.00					371.70			371.70
	Pub. Ed. Arts & Res. (Clerical)	10.80	38.70					49.50			49.50
	Administrative Projects	532.75	5,728.70		40.02		1,182.15	4,241.46		3,242.25	7,483.71
Total County Projects		\$22,593.65	\$13,310.32	\$ 324.20	\$10,177.20	\$ 2,179.16	\$ 1,552.69	\$ 29,728.32	\$	\$ 20,408.90	\$ 50,137.22
State & Federal											
	State, Location Water Supply Drought Area	\$ 21.60	\$ 14.40	\$	\$	\$	\$	\$ 36.00	\$	\$	\$ 36.00
	State, Feeding, Shipping, Admr. Cattle Prog.	27.20						27.20			27.20
	Homstd. Rehab. Div. Feeding, Transporting, etc., AAA Surplus Hogs	45.90						45.90			45.90
	Nat. Em. Coun. & NRA, Labor Adjust. & Fair Trade Practice	104.40						104.40			104.40
	St. Bd. Health, Collect. & Class. Vital Stat.	84.00						84.00			84.00
	K. S. C. Dept. Ag. & Ec., Determ. of Land Use and Ownership	86.40						86.40			86.40
Total State & Federal Projects		\$ 369.50	\$ 14.40	\$	\$	\$	\$	\$ 383.90	\$	\$	\$ 383.90
Grand Total		\$28,154.20	\$13,324.72	\$ 922.20	\$10,847.38	\$ 3,177.26	\$ 1,614.04	\$ 36,358.73	\$	\$ 21,681.07	\$ 58,039.80

\*Repair Does Not Include Maintenance.

#### VI—DISTRIBUTION OF COMMODITIES SUPPLIED BY FSRC AND KERC FOR THE YEAR 1934

Max. Relief Cases in Any 1 Mo.						Max. Relief Cases in Any 1 Mo.					
Unit of Measure	Amount Distributed	Actual Costs	Estimated Valuation	Total		Unit of Measure	Amount Distributed	Actual Costs	Estimated Valuation	Total	
Commodities Furnished by FSRC											
Apples		\$	\$	\$		Sausage		\$	\$	\$	
Beef, Fresh						Soup, Canned					
Beef, Canned	Cans	2,182	256	545.50	545.50	Mattresses*	32	20	320.00	320.00	
Blankets						Comforts*	149	77	484.25	484.25	
Butter	Pounds	4,192	345	1,048.00	1,048.00	Pillow Cases*					
Cheese	Pounds	298	294	74.50	74.50	Sheets*					
Flour	24lb Sacks	364	220	364.00	364.00	Huck & Terry Towels					
Grain & Feed						Wood	16	16	40.00	40.00	
Lard	Pounds	3,804	270	342.36	342.36	New Garments**	248	13	179.05	179.05	
Milk	Pounds	3,190	255	255.20	255.20	Old Garments**	247	31	195.89	195.89	
Pork, Salt	Pounds	10,843	498	1,843.31	1,843.31	Total		\$	\$ 3,461.14	\$ 3,461.14	
Pork, Smoked	Pounds					Total Commodities		\$	\$ 8,032.71	\$ 8,032.71	
Potatoes						Fuel Distribution—FSRC					
Rice						Coal					
Sugar						Fuel Distribution—KERC		\$	\$	\$	
Tongue, Frozen	Pounds	987	318	98.70	98.70	Coal					
Total				\$ 4,571.57	\$ 4,571.57	Gas					
Commodities Purchased by KERC						Dist. Costs of FSRC					
Beef, Fresh	Pounds	6,073	337	\$ 910.95	\$ 910.95	Coal Paid by KERC					
Beef, Canned	14lb Cans	6,445	308	1,289.00	1,289.00	Total		\$	\$	\$	
Cod Liver Oil	Bottles	84	84	42.00	42.00	Grand Total		\$	\$ 8,032.71	\$ 8,032.71	
Eggs											
Flour											
Grain & Feed	Bushels										
Pork, Smoked											

\*Raw Materials Furnished by FSRC. Finished Products Accomplished under Work Projects

\*\*Materials Furnished for Work Projects by C. S. G. Co., Inc., 1411 Broadway, New York 19, N. Y.

\*Raw Materials Furnished by FSRC. Finished Products Accomplished under Work Projects.

\*\*Materials Furnished for Work Projects from County and Private Funds.

#### VII—ANALYSIS OF COUNTY ADMINISTRATIVE COSTS—1934

	Non-Relief Payrolls		Relief Payrolls		Equipment Rental	Materials	Other Costs	Total Costs
	Aver. Monthly No. Employed	Earnings	Aver. Monthly No. Empl'd	Earnings				
Administrative Projects								
County Funds								
Federal Funds	3.3	\$2,020.08			\$ 40.02		\$ 1,182.15	\$ 3,242.25
Additional Administration—County Funds*	5.5	3,708.71	1.2	532.75			222.81	4,241.46
Supplemental Salaries	3.0	628.78						851.59
City Funds								
Private Funds								
Total Costs		\$6,357.57		\$ 532.75	\$ 40.02	\$	\$ 1,404.96	\$ 8,335.30

\*Additional Administration January through March 31.



### VIII—ANALYSIS OF CIVIL WORKS ADMINISTRATION PROJECTS FOR THE ENTIRE PERIOD, NOVEMBER 17, 1933, THROUGH JUNE 30, 1934

		FEDERAL FUNDS				SPONSORS' CONTRIBUTIONS				DISTRIBUTION OF COSTS		
Sponsor	Description of Project	CWA Payrolls		Purchase Orders		Wages	Team-Truck Equip. Exp.	Materials	Other Costs	Federal Funds	Local Funds	Gr'd Total Expenditures
		Wages	Team-Truck Equip. Exp.	Team-Truck Equip. Exp.	Materials							
Cities												
City of Westphalia	Street Improvement	\$ 921.70	\$ 236.75	\$ 597.04	\$ .....	\$ .....	\$ .....	\$ 314.45	\$ .....	\$ 1,158.45	\$ .....	\$ 1,158.45
City of Garnett	Street Improvement	467.10	.....	.....	.....	.....	.....	121.53	.....	1,084.14	314.45	1,378.59
City of Kinsaid	Repainting & Refinishing City Hall	202.50	.....	.....	.....	.....	.....	.....	.....	202.50	121.53	324.03
Total City Projects		\$ 1,591.30	\$ 236.75	\$ 597.04	\$ .....	\$ .....	\$ .....	\$ 435.98	\$ .....	\$ 2,425.09	\$ 435.98	\$ 2,861.07
County												
Anderson County	Roads	\$48,569.65	\$13,809.59	\$1,620.00	\$ .....	\$ .....	\$12,039.45	\$6,607.94	\$ .....	\$63,999.24	\$18,647.39	\$82,646.63
Anderson County	Local CWA Office	2,319.65	.....	.....	.....	.....	.....	.....	.....	2,319.65	.....	2,319.65
Anderson County	Poor Relief	489.15	.....	.....	.....	.....	.....	6.30	.....	489.15	6.30	495.45
Anderson County	Re-employment Office	1,101.82	.....	.....	.....	.....	.....	.....	.....	1,101.82	.....	1,101.82
Anderson County	Repairing Courthouse	1,082.00	.....	.....	.....	.....	.....	607.83	.....	1,082.00	607.83	1,689.83
Total County Projects		\$53,562.27	\$13,809.59	\$ 1,620.00	\$ .....	\$ .....	\$12,039.45	\$7,222.07	\$ .....	\$68,991.86	\$19,261.52	\$88,253.38
State & Federal												
State	Roads	\$ 1,701.50	\$ 155.70	.....	\$ .....	\$ 385.16	.....	.....	\$ 72.47	\$ 1,857.20	\$ 545.38	\$ 2,402.58
State	Sign Boards	55.20	.....	.....	27.50	.....	.....	.....	.....	82.70	.....	82.70
Federal	Airports	.....	.....	.....	734.02	.....	.....	.....	.....	734.02	.....	734.02
Federal	Farm Mortgage & Land Value	678.60	.....	.....	.....	.....	.....	.....	.....	678.60	.....	678.60
Total State & Federal Projects		\$ 2,435.30	\$ 155.70	\$ 761.52	\$ 385.16	\$ 385.16	\$12,039.45	\$ 72.47	\$ 87.75	\$ 3,352.52	\$ 545.38	\$ 3,897.90
Grand Total		\$57,588.87	\$14,202.04	\$ 2,217.04	\$ 761.52	\$ 385.16	\$12,039.45	\$7,230.52	\$ 87.75	\$74,769.47	\$20,242.88	\$95,012.35

108

ANDERSON COUNTY

### IX—CIVIL WORKS ADMINISTRATION—EMPLOYMENT, MAN HOURS, AND WAGES FOR THE ENTIRE PERIOD, NOVEMBER 17, 1933, THROUGH JUNE 30, 1934

	Employment Data Covering Work Projects and Tool and Sundry Equipment Projects						Employment Data Covering Administrative Projects			Summary						
	All Payrolls Covering Projects Employing Principally Labor			All Payrolls Covering Drivers of Their Own Teams, Trucks and Other Mechanical Equipment			Payrolls on Project Employing Chiefly Professional and Cler. Wk'rs Proj.			Payrolls for EPl'ees of State & Local Administrative Proj.			Total Number Employees	Total Earnings, Wages, Salaries, and Hire	Accident Compensation	Grand Total
	Average Weekly No. of Employees	Total Man Hours Worked	Total Wages Earned	Average Weekly No. of Employees	Total Hours Worked	Total Wages-Hire	Average Weekly No. of EPl'ees	Salaries and Wages Earned	Average Weekly No. of Employees	Salaries and Wages Earned						
	Employees			Employees			Employees		Employees							
Anderson County																
Total 1933	327.7	51,461	\$20,987.50	36.0	4,942	\$ 3,380.90	.....	.....	9.3	\$ 726.00	373.0	\$25,094.40	\$ 11.21	.....	.....	\$25,094.40
Total—																
First 3 Mo. 1934	300.0	74,687	31,787.40	55.5	13,771	10,788.14	5.2	1,054.60	10.8	2,170.60	371.5	45,800.74	9.48	.....	.....	45,800.74
Total—																
Second 3 Mo. 1934	8.1	1,269	480.05	0.2	25	18.75	1.4	308.97	0.7	88.00	10.4	895.77	6.68	.....	.....	895.77
Total	186.6	127,417	\$53,254.95	29.4	18,738	\$14,187.79	2.7	\$1,363.57	6.4	\$2,984.60	225.1	\$71,790.91	\$ 9.97	.....	.....	\$71,790.91



### ATCHISON COUNTY

109

Board of County Commissioners—George P. Herzinger, Chairman, Atchison; Scott Clingan, Atchison; John G. Niblo, Muscotah.  
County Emergency Relief Committee—George Bolefohr, Chairman, Atchison; Ronald Ramsay, Atchison; W. H. Sells, Effingham; George P. Herzinger, Atchison; Scott Clingan, Atchison.  
County Poor Commissioner and Case Supervisor—Ethel L. Bales; Supervisor of Work Program—Roy D. Coleman (December, 1934).

Assessed Valuation—\$32,412,706 (March 1, 1934); Bonded Indebtedness—\$679,473.84 (October 1, 1934); Population—23,515 (March, 1934); Total Population on Relief—3,328; Per Cent—14.2 (December, 1934).

#### EXPENDITURES FOR RELIEF AND CWA FROM ALL SOURCES, 1934\*

	Relief Program	CWA Program	Total
Total County Funds.....	\$ 54,027.00	\$.....	\$ 54,027.00
Total Township Funds.....	.....	.....	.....
Total City Funds.....	4,377.72	.....	4,377.72
Total School Funds.....	996.58	.....	996.58
Total Privately Raised Funds.....	4,364.75	.....	4,364.75
Total State Funds.....	.....	.....	.....
Total Federal Funds.....	81,412.81	49,526.39	130,939.20
Total.....	\$145,178.86	\$ 49,526.39	\$194,705.25

#### EXPENDITURES FOR RELIEF AND CWA FROM ALL SOURCES, 1924-1933\*

	Relief Program	CWA Program	Total
Total County Funds.....	\$394,355.28	\$.....	\$394,355.28
Total Private Funds.....	47,151.42	.....	47,151.42
Total City Funds.....	.....	.....	.....
Total School Funds.....	.....	.....	.....
Total Federal Funds.....	32,860.02	21,038.00	53,898.02
Total.....	\$474,366.72	\$ 21,038.00	\$495,404.72

\*Excludes All Non-relief Obligations Except Payrolls.

#### WORK RELIEF AND CWA, OCTOBER, 1932, THROUGH DECEMBER, 1934

Construction of a county lake along Clear creek kept the major part of the work relief clients busy in Atchison county during the latter half of 1934. The lake, when completed, will cover 128 acres in Clear creek valley. Other water conservation measures have not been carried out to any great extent; only eight emergency wells were constructed during 1934.

A total of 33 different projects was operative in this county, a survey showed. It has been estimated that 110 miles of county and township roads were graded and surfaced and 51 miles graded during the entire period, October, 1932, when the first county relief program began, to December, 1934, when the work relief program was in operation. This period also included work done under the Civil Works Administration. In addition to road work, a large box storm sewer, 1,300 feet in length, was laid in Atchison and the county courthouse there was improved, as was another public building at Huron and seven schoolhouses, all in Atchison. Work also was done on two parks and one playground at Atchison. A sewing room in the Atchison courthouse produced approximately 4,000 garments for persons on relief. A county orchard sanitation program was getting under way as 1934 ended.

The most extensive accomplishments under the Civil Works Administration program included work of the following types: Grading of roads, making fills, eliminating dangerous curves, surfacing with crushed rock, and construction of concrete culverts and smaller bridges. Hand labor and county equipment were used largely. City street improvement programs were carried out at Atchison, Muscotah, Lancaster, and Huron under the county work relief program and were of assistance in developing better drainage systems for the smaller towns. Construction of tennis courts, a small storage building and monkey cages, in addition to graveling a parking space for cars, was part of the park improvement program at Atchison.

The increased case load in Atchison county in 1934 was attributed by the county poor commissioner to several causes, chiefly the extreme drought. Both farmers and farm laborers whom they had employed were obliged to apply for relief when crops failed. The abandoning of government river projects which formerly operated extensively was another direct cause of unemployment in the county.

### I—ANALYSIS OF ALL RELIEF GRANTED FROM FEDERAL, LOCAL PUBLIC, AND PRIVATE WELFARE AGENCY FUNDS—1934

ITEMS	RESIDENT FAMILIES				RESIDENT SINGLES				RESIDENT TOTAL				TRANSIENTS		GRAND TOTAL
	Aver. Mo. No. Cases	Aver. Mo. No. Persons Rept.	Amount	Aver. Relief Per Case	Aver. Mo. No. Cases	Amount	Aver. Relief Per Case	Aver. Mo. No. Cases	Amount	Aver. Relief Per Case	Actual No. Persons	Amount	Actual No. Persons	Amount	All Relief Granted
<b>Section A—Work and Direct Relief</b>															
Approved Work Projects															
Federal Funds.....	275.6	1,207.8	\$ 47,191.60	\$ 14.27	.....	.....	.....	275.6	\$ 47,191.60	\$ 14.27	.....	.....	.....	.....	\$ 47,191.60
County Funds.....	12.7	54.6	397.53	2.60	.....	.....	.....	12.7	397.53	2.60	.....	.....	.....	.....	397.53
Total.....	288.3	1,262.4	\$ 47,589.13	\$ 13.75	.....	.....	.....	288.3	\$ 47,589.13	\$ 13.75	.....	.....	.....	.....	\$ 47,589.13
Additional County Projects.....	.....	.....	.....	.....	.....	.....	.....	.....	.....	.....	13	\$ 85.34	.....	.....	\$ 85.34
Total Work Relief.....	288.3	1,262.4	\$ 47,589.13	\$ 13.75	.....	.....	.....	288.3	\$ 47,589.13	\$ 13.75	13	\$ 85.34	.....	.....	\$ 47,674.47
Direct Relief															
County Funds.....	197.8	727.9	\$ 17,820.74	\$ 7.51	41.7	\$ 2,901.91	\$ 5.80	239.5	\$ 20,722.65	\$ 7.21	.....	.....	.....	.....	\$ 20,722.65
Federal Funds.....	.....	.....	.....	.....	.....	.....	.....	.....	.....	.....	.....	.....	.....	.....	.....
Garden Seed.....	.....	.....	172.00	.....	.....	.....	.....	.....	172.00	.....	.....	.....	.....	.....	172.00
Fuel Distribution.....	.....	.....	1,910.53	.....	.....	.....	.....	.....	1,910.53	.....	.....	.....	.....	.....	1,910.53
Total.....	197.8	727.9	\$ 19,903.27	.....	41.7	\$ 2,901.91	.....	239.5	\$ 22,805.18	.....	.....	.....	.....	.....	\$ 22,805.18
Total Work & Direct Relief	486.1	1,990.3	\$ 67,492.40	.....	41.7	\$ 2,901.91	.....	527.8	\$ 70,394.31	.....	13	\$ 85.34	.....	.....	\$ 70,479.65
Less Duplicated Cases.....	54.0	222.6	.....	.....	.....	.....	.....	54.0	.....	.....	.....	.....	.....	.....	.....
Net Total, Section A.....	432.1	1,767.7	\$ 67,492.40	.....	41.7	\$ 2,901.91	.....	473.8	\$ 70,394.31	.....	13	\$ 85.34	.....	.....	\$ 70,479.65
<b>Section B—Special Programs</b>															
Federal Grants in Aid															
Emergency Educ. Pro.†.....	.....	.....	.....	.....	9.8	\$ 2,524.91	\$ 51.53	9.8	\$ 2,524.91	\$ 51.53	.....	.....	.....	.....	\$ 2,524.91
College Student Pro.†.....	.....	.....	.....	.....	39.4	\$ 4,100.50	\$ 13.02	39.4	\$ 4,100.50	\$ 13.02	.....	.....	.....	.....	\$ 4,100.50
Homestead Rehabilitation†.....	.....	.....	.....	.....	24.0	\$ 1,100.90	\$ 22.94	24.0	\$ 1,100.90	\$ 22.94	.....	.....	.....	.....	\$ 1,100.90
Civil Works Service†.....	.....	.....	.....	.....	.....	.....	.....	.....	.....	.....	.....	.....	.....	.....	.....
Total Section B.....	.....	.....	.....	.....	73.2	\$ 7,726.31	.....	73.2	\$ 7,726.31	.....	.....	.....	.....	.....	\$ 7,726.31
<b>Section C—Other Relief from County Funds</b>															
Poor Farm.....	.....	.....	.....	.....	30.4	\$ 6,306.60	\$ 17.28	30.4	\$ 6,306.60	\$ 17.28	.....	.....	.....	.....	\$ 6,306.60
Hospitalization.....	5.9	5.9	2,538.08	35.75	.....	.....	.....	5.9	2,538.08	35.75	.....	.....	.....	.....	2,538.08
Other Institutions.....	4.3	4.3	2,416.00	47.37	.....	.....	.....	4.3	2,416.00	47.37	.....	.....	.....	.....	2,416.00
Pensions.....	41.8	73.3	4,123.22	8.23	.....	.....	.....	41.8	4,123.22	8.23	.....	.....	.....	.....	4,123.22
Mothers' Aid.....	17.3	62.8	2,100.00	10.10	.....	.....	.....	17.3	2,100.00	10.10	.....	.....	.....	.....	2,100.00
Crippled Children.....	1.8	1.8	1,699.94	77.27	.....	.....	.....	1.8	1,699.94	77.27	.....	.....	.....	.....	1,699.94
All Other (Burials, etc.).....	2.6	7.2	1,242.00	40.06	.....	.....	.....	2.6	1,242.00	40.06	.....	.....	.....	.....	1,242.00
Total Section C.....	73.7	155.3	\$ 14,119.24	\$ 15.96	30.4	\$ 6,306.60	\$ 17.28	104.1	\$ 20,425.84	\$ 16.35	.....	.....	.....	.....	\$ 20,425.84
<b>Section D—Relief from Private Agencies</b>															
Red Cross.....	6.4	21.7	\$ 123.68	\$ 1.61	.....	.....	.....	6.4	\$ 123.68	\$ 1.61	.....	.....	.....	.....	\$ 123.68
Religious Organizations.....	34.5	102.1	751.33	1.82	.....	.....	.....	34.5	751.33	1.82	.....	.....	.....	.....	751.33
Fraternal Clubs.....	85.4	267.5	1,350.00	1.32	.....	.....	.....	85.4	1,350.00	1.32	.....	.....	.....	.....	1,350.00
Community Chest.....	44.2	196.0	1,421.53	2.68	.....	.....	.....	44.2	1,421.53	2.68	.....	.....	.....	.....	1,421.53
Associated Charities.....	.....	.....	.....	.....	.....	.....	.....	.....	.....	.....	.....	.....	.....	.....	.....
Welfare Boards.....	.....	.....	.....	.....	.....	.....	.....	.....	.....	.....	.....	.....	.....	.....	.....
Salvation Army.....	118.8	283.8	330.93	23	.....	.....	.....	118.8	330.93	23	.....	.....	.....	.....	330.93
Parent-Teachers Assn.....	37.5	37.5	54.00	12	.....	.....	.....	37.5	54.00	12	.....	.....	.....	.....	54.00
Other Agencies.....	.....	.....	.....	.....	.....	.....	.....	.....	.....	.....	.....	.....	.....	.....	.....
Total Section D.....	326.8	908.5	\$ 4,031.47	\$ 1.03	.....	.....	.....	326.8	\$ 4,031.47	\$ 1.03	.....	.....	.....	.....	\$ 4,031.47
<b>Section E—Relief from City Funds</b>															
.....	100.0	200.0	\$ 2,100.00	\$ 1.75	.....	.....	.....	100.0	\$ 2,100.00	\$ 1.75	.....	.....	.....	.....	\$ 2,100.00
Total Sections A to E, Incl.....	.....	.....	\$ 87,743.11	.....	.....	\$ 16,934.82	.....	.....	\$ 104,677.93	.....	.....	.....	.....	.....	\$ 104,763.27
<b>Section F—Surp. Commodities—Est. Val.</b>															
Commodities Granted by†															
Fed. Surplus Relief Corp.....	.....	.....	\$ 8,070.58	.....	.....	.....	.....	.....	\$ 8,070.58	.....	.....	.....	.....	.....	\$ 8,070.58
Kansas Emer. Relief Com.....	.....	.....	6,834.95	.....	.....	.....	.....	.....	6,834.95	.....	.....	.....	.....	.....	6,834.95
Fuel Granted by†	.....	.....	.....	.....	.....	.....	.....	.....	.....	.....	.....	.....	.....	.....	.....
Fed. Surplus Relief Corp.....	.....	.....	1,188.03	.....	.....	.....	.....	.....	1,188.03	.....	.....	.....	.....	.....	1,188.03
Total Section F.....	.....	.....	\$ 16,093.56	.....	.....	.....	.....	.....	\$ 16,093.56	.....	.....	.....	.....	.....	\$ 16,093.56
Grand Total All Relief.....	.....	.....	\$ 103,836.67	.....	.....	\$ 16,934.82	.....	.....	\$ 120,771.49	.....	.....	\$ 85.34	.....	.....	\$ 120,856.83

\*Cases Included in Schedule III. †Cases Included in Schedule VI. ‡Case Averages Based on Actual Number of Months Program Was in Operation.



### II—SUMMARY OF ALL OBLIGATIONS INCURRED FOR RELIEF AND THE WORK RELIEF PROGRAM FOR YEAR 1934 AND CIVIL WORKS ADMINISTRATION FROM NOVEMBER 17, 1933, THROUGH JUNE 30, 1934

Consolidated Statement of All Obligations for These Purposes Against Federal, State, Local Public, Private and Private Welfare Agency Funds

ITEMS	Federal Funds	County Funds	City Funds	Township Funds	School Funds	Private Funds	Total Funds	State Funds	Private Agy. Funds	Grand Total All Funds
<b>Section A</b>										
Work Relief—Wages on Approved Projects	\$ 47,191.60	\$ 354.18			\$ 43.35		\$ 47,589.13			\$ 47,589.13
<b>Section B</b>										
<b>Non-Relief Obligations—Work Relief Pro.</b>										
<b>Materials</b>										
Aggregate Materials & Stone	\$ 1,782.74	\$ 389.81	\$ 406.00		\$ 141.70		\$ 2,720.25			\$ 2,720.25
Cement	2,856.12	851.74	41.10		141.65		3,890.61			3,890.61
Bituminous Materials	32.34	83.95	3.50		12.75		132.54			132.54
Petroleum Products		3,344.17	116.45				3,460.62			3,460.62
Iron & Steel	2,899.24	759.64	380.25		29.13		4,068.26			4,068.26
Clay Products		10.00	3.30		73.99		87.29			87.29
Lumber	252.46	4,764.58	309.22		36.11		5,362.37			5,362.37
Plumbing & Heating	76.72		10.00		35.38		123.00			123.00
Hardware	14.05	1,395.54	98.77		33.80		1,542.16			1,542.16
Explosives	73.00	58.14	1.20				132.34			132.34
Paint & Paint Materials	101.65	20.05	5.75		1,200.85		1,328.30			1,328.30
Total Materials	\$ 8,088.32	\$ 11,677.62	\$ 1,376.44		\$ 1,705.36		\$ 22,847.74			\$ 22,847.74
<b>Team, Truck, &amp; Equipment Expense</b>										
Equipment Parts & Supplies	\$ 86.18	\$ 3,078.74					\$ 3,164.92			\$ 3,164.92
Office Supplies & Equipment		286.67					286.67			286.67
Rental of Equipment	7,953.00	90.38	40.60		41.00		8,124.98			8,124.98
Total Team, Truck, & Equip. Exp.	\$ 8,039.18	\$ 3,455.79	\$ 40.60		\$ 41.00		\$ 11,576.57			\$ 11,576.57
<b>Other Costs</b>										
Tools		198.83	7.43		.15		206.41			206.41
Rental of Premises			112.50				112.50			112.50
Other Services		1,181.46	185.19				1,366.65			1,366.65
Other Charges			.50				.50			.50
Miscellaneous	260.44	390.72	49.25		168.62		869.03			869.03
Total Other Costs	\$ 260.44	\$ 1,771.01	\$ 354.87		\$ 168.77		\$ 2,555.09			\$ 2,555.09
Wages & Salaries	\$ 8,318.81	\$ 11,778.99	\$ 2,277.72		\$ 953.23		\$ 23,328.75			\$ 23,328.75
Total Non-Relief Obligations	\$ 24,706.75	\$ 28,683.41	\$ 4,049.63		\$ 2,868.36		\$ 60,308.15			\$ 60,308.15
Total Sections A & B	\$ 71,895.35	\$ 29,037.59	\$ 4,049.63		\$ 2,911.71		\$ 107,897.28			\$ 107,897.28
<b>Section C</b>										
Additional County Work Relief		\$ 85.34					\$ 85.34			\$ 85.34
Direct Relief	2,082.53	20,722.65					22,805.18			22,805.18
Admin. Costs Prior to Admin. Projects										
Wages & Salaries		660.00					660.00			660.00
Other Costs		321.99					321.99			321.99
Total	\$	\$ 981.99					\$ 981.99			\$ 981.99
Total Section C	\$ 2,082.53	\$ 21,789.98					\$ 23,872.51			\$ 23,872.51
<b>Section D</b>										
Non-Relief Obligations on Special Programs	\$ 34.86						\$ 34.86			\$ 34.86
Relief from Special Programs		7,726.31					7,726.31			7,726.31
Other Relief from County Funds		20,425.84					20,425.84			20,425.84
Other Relief from City Funds			2,100.00				2,100.00			2,100.00
Relief from Private Welfare Agency Funds								4,031.47		4,031.47
Surplus Commodities & Fuel—Est. Value	16,093.56						16,093.56			16,093.56
Supplemental Administrative Salaries									333.28	333.28
Total Section D	\$ 23,854.73	\$ 20,425.84	\$ 2,100.00				\$ 46,380.57		\$ 4,364.75	\$ 50,745.32
Grand Total Sections A to D, Incl.	\$ 97,835.61	\$ 71,253.41	\$ 6,149.63		\$ 2,911.71		\$ 178,150.36		\$ 4,364.75	\$ 182,515.11
<b>Section E</b>										
<b>Civil Works Administration</b>										
<b>Work Projects</b>										
Payrolls	\$ 67,119.39						\$ 67,119.39			\$ 67,119.39
Other Costs	3,140.03	25,274.21	2,621.06		2,023.15	328.20	33,386.65			33,386.65
Total	\$ 70,259.42	\$ 25,274.21	\$ 2,621.06		\$ 2,023.15	\$ 328.20	\$ 100,506.04			\$ 100,506.04
<b>Administration</b>										
Payrolls	\$ 3,445.00						\$ 3,445.00			\$ 3,445.00
Other Costs		655.47					655.47			655.47
Total	\$ 3,445.00	\$ 655.47					\$ 4,100.47			\$ 4,100.47
Total Civil Works Administration	\$ 73,704.42	\$ 25,929.68	\$ 2,621.06		\$ 2,023.15	\$ 328.20	\$ 104,606.51			\$ 104,606.51
Grand Total	\$ 171,540.03	\$ 97,183.09	\$ 8,770.69		\$ 4,934.86	\$ 328.20	\$ 282,756.87		\$ 4,364.75	\$ 287,121.62

### III—MONTHLY RECORD OF RESIDENT CASES SHOWING APPLICATIONS RECEIVED, CASES OPENED, ACTIVE AND INACTIVE CASES, AND CASES CLOSED FOR YEAR 1934

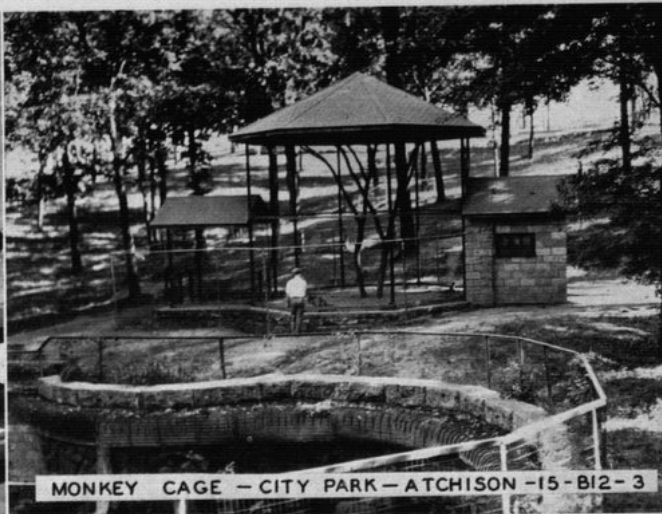
	Cases at Beginning of Mo.	Applications Rec'd	Total Cases Opened	New Cases Opened	Old Cases Re-Opened	Total Mo. Case Load	Cases Rec'd Relief	* Cases Homest'd Rehab. Project	Cases Received No Relief	Total Cases Closed	Cases Closed Because Unemploy't	Cases Closed Other Reasons	Cases Open End of Mo.	Cases Active End of Month	Cases Inactive End of Month
January	209	72	72	52	20	281	260	...	21	21	19	2	260	260	...
February	260	46	46	46	...	306	302	...	4	4	3	1	302	302	...
March	302	45	45	25	20	347	342	...	5	5	...	5	342	342	...
April	342	233	198	16	182	540	388	...	152	130	80	50	410	359	51
May	410	61	57	12	45	467	342	...	125	110	46	64	357	342	15
June	357	45	32	10	22	389	333	...	56	41	20	31	348	333	15
July	348	120	105	44	61	453	428	...	25	10	8	2	443	428	15
August	443	175	127	111	16	570	524	...	46	10	10	...	560	524	36
September	560	136	85	75	10	645	571	...	74	74	10	64	571	571	...
October	571	168	105	79	26	676	654	...	22	22	20	2	654	654	...
November	654	168	105	44	61	759	759	...	...	17	12	5	742	742	...
December	742	72	90	38	52	832	783	...	49	49	6	43	783	783	...

\*Included in Cases Receiving Relief.

## ATCHISON COUNTY



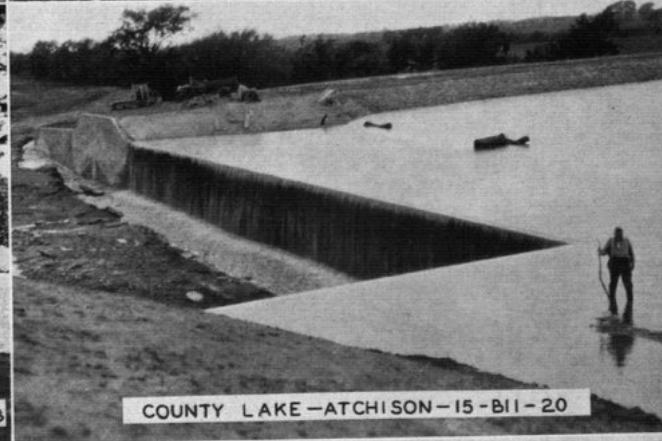
RELIEF OFFICE -ATCHISON- DECORATED AND  
EQUIPPED BY RELIEF LABOR -15-B4-22



MONKEY CAGE -CITY PARK-ATCHISON -15-B12-3



TENNIS COURTS -ORPHANS' HOME -ATCHISON -15-B12-3



COUNTY LAKE -ATCHISON-15-B11-20



COUNTY LAKE UNDER CONSTRUCTION -15-B11-20



### IV—ANALYSIS OF PAYMENTS IN CASH OR IN KIND FOR ALL RELIEF GRANTED FROM FEDERAL, LOCAL PUBLIC, AND PRIVATE WELFARE AGENCY FUNDS—1934

Source of Funds	Total Relief Extended	Payments		Food and Household Necessities	Shelter	Clothing	Fuel	Public Utilities	Medical Care	Institutional Care	Subsistence Crops	Feed for Stock	All Other
		in Cash	For Which Type Not Defined										
January—Federal.....	\$ 1,772.73	\$ 491.00	\$ 1,281.73	\$ 1,210.73	\$ 19.72	\$ 71.00	\$ 19.72	\$ 1,083.91	\$ 437.85	\$ 84.00			
County.....	3,443.58	538.60	2,904.98	1,258.97		20.33							
City.....	175.00												
Private Agencies.....	361.54												
Total.....	\$ 5,752.85	\$ 1,029.60	\$ 4,723.25	\$ 2,469.70	\$ 19.72	\$ 91.33	\$ 19.72	\$ 1,083.91	\$ 437.85	\$ 84.00			
February—Federal.....	\$ 1,493.94	\$ 1,373.51	\$ 120.43	\$ 46.48	\$ 73.95	\$ 16.32	\$ 810.69	\$ 529.72	\$ 172.00	\$ 128.00			
County.....	3,140.78	513.41	2,627.37	1,142.64									
City.....	175.00												
Private Agencies.....	263.03												
Total.....	\$ 5,072.75	\$ 1,886.92	\$ 3,185.83	\$ 1,189.12	\$ 73.95	\$ 16.32	\$ 810.69	\$ 529.72	\$ 172.00	\$ 128.00			
March—Federal.....	\$ 3,899.76	\$ 1,654.50	\$ 2,245.26	\$ 1,986.66	\$ 50.60	\$ 10.85	\$ 36.00	\$ 616.33	\$ 594.50	\$ 172.00	\$ 70.00		
County.....	5,096.98	580.33	4,516.65	1,294.97									
City.....	175.00												
Private Agencies.....	446.29												
Total.....	\$ 7,618.03	\$ 2,234.83	\$ 5,383.20	\$ 3,281.63	\$ 50.60	\$ 10.85	\$ 36.00	\$ 616.33	\$ 594.50	\$ 172.00	\$ 70.00		
April—Federal.....	\$ 7,286.83	\$ 3,442.00	\$ 3,844.83	\$ 716.92	\$ 29.35	\$ 3,098.56	\$ 5.20	\$ 1,008.78	\$ 712.13	\$ 70.00			
County.....	3,778.19	651.13	3,127.06	1,330.95									
City.....	175.00												
Private Agencies.....	349.57												
Total.....	\$ 11,589.59	\$ 4,093.13	\$ 7,496.46	\$ 2,047.87	\$ 29.35	\$ 3,103.76	\$ 5.20	\$ 1,008.78	\$ 712.13	\$ 70.00			
May—Federal.....	\$ 5,192.49	\$ 2,963.50	\$ 2,228.99	\$ 1,130.29	\$ 20.20	\$ 576.54	\$ 677.11	\$ 1,078.50	\$ 70.00				
County.....	3,495.27	1,318.01	2,177.26	853.61									
City.....	175.00												
Private Agencies.....	330.73												
Total.....	\$ 9,193.49	\$ 4,281.51	\$ 4,911.98	\$ 1,983.90	\$ 20.20	\$ 576.54	\$ 677.11	\$ 1,078.50	\$ 70.00				
June—Federal.....	\$ 3,451.29	\$ 2,611.20	\$ 840.09	\$ 822.44	\$ 17.65	\$ 447.53	\$ 759.35	\$ 120.00	\$ 120.00				
County.....	2,856.80	524.80	2,332.00	1,005.21									
City.....	175.00												
Private Agencies.....	337.83												
Total.....	\$ 6,821.01	\$ 3,136.00	\$ 3,685.01	\$ 1,827.65	\$ 17.65	\$ 447.53	\$ 759.35	\$ 120.00	\$ 120.00				
July—Federal.....	\$ 3,036.01	\$ 2,925.00	\$ 111.01	\$ 107.41	\$ 3.60	\$ 732.55	\$ 837.72	\$ 210.00	\$ 210.00				
County.....	3,393.85	509.40	2,884.45	1,084.18									
City.....	175.00												
Private Agencies.....	249.70												
Total.....	\$ 6,854.56	\$ 3,434.40	\$ 3,420.16	\$ 1,191.59	\$ 3.60	\$ 732.55	\$ 837.72	\$ 210.00	\$ 210.00				
August—Federal.....	\$ 6,321.55	\$ 4,560.00	\$ 1,761.55	\$ 1,524.60	\$ 236.95	\$ 498.79	\$ 462.67	\$ 120.00	\$ 120.00				
County.....	3,213.31	1,110.61	2,102.70	1,021.24									
City.....	175.00												
Private Agencies.....	274.99												
Total.....	\$ 9,984.85	\$ 5,670.61	\$ 4,314.24	\$ 2,545.84	\$ 236.95	\$ 498.79	\$ 462.67	\$ 120.00	\$ 120.00				
September—Federal.....	\$ 5,809.67	\$ 5,370.70	\$ 438.97	\$ 325.37	\$ 113.60	\$ 567.99	\$ 724.14	\$ 80.00	\$ 80.00				
County.....	2,888.21	431.10	2,457.11	1,074.48									
City.....	175.00												
Private Agencies.....	260.46												
Total.....	\$ 9,133.34	\$ 5,801.80	\$ 3,331.54	\$ 1,399.85	\$ 113.60	\$ 567.99	\$ 724.14	\$ 80.00	\$ 80.00				
October—Federal.....	\$ 10,185.05	\$ 9,097.40	\$ 1,087.65	\$ 954.60	\$ 133.05	\$ 755.37	\$ 920.60	\$ 240.00	\$ 240.00				
County.....	3,666.79	463.45	3,203.34	1,168.29	14.78	104.30							
City.....	175.00												
Private Agencies.....	415.18												
Total.....	\$ 14,442.02	\$ 9,560.85	\$ 4,881.17	\$ 2,122.89	\$ 147.83	\$ 104.30	\$ 755.37	\$ 920.60	\$ 240.00	\$ 240.00			
November—Federal.....	\$ 13,197.40	\$ 11,227.30	\$ 1,970.10	\$ 1,689.75	\$ 280.35	\$ 495.76	\$ 793.58	\$ 80.00	\$ 80.00				
County.....	3,714.28	469.25	3,245.03	1,169.20	78.69	627.80							
City.....	175.00												
Private Agencies.....	212.60												
Total.....	\$ 17,299.28	\$ 11,696.55	\$ 5,602.73	\$ 2,858.95	\$ 359.04	\$ 627.80	\$ 495.76	\$ 793.58	\$ 80.00	\$ 80.00			
December—Federal.....	\$ 11,447.28	\$ 9,201.80	\$ 2,245.48	\$ 1,953.23	\$ 292.25	\$ 634.76	\$ 1,253.23	\$ 40.00	\$ 40.00				
County.....	4,943.23	535.00	4,408.23	1,323.60	47.95	1,108.69							
City.....	175.00												
Private Agencies.....	529.55												
Total.....	\$ 17,095.06	\$ 9,736.80	\$ 7,358.26	\$ 3,276.83	\$ 340.20	\$ 1,108.69	\$ 634.76	\$ 1,253.23	\$ 40.00	\$ 40.00			
Year 1934—Federal.....	\$ 73,094.09	\$ 54,917.91	\$ 18,176.09	\$ 12,468.48	\$ 1,322.55	\$ 3,098.56	\$ 36.00	\$ 8,229.00	\$ 8,722.60	\$ 172.00	\$ 1,078.50	\$ 1,242.00	
County.....	41,631.36	7,645.09	33,986.27	13,727.34	161.95	1,903.38							
City.....	2,100.00												
Private Agencies.....	4,031.47												
Grand Total.....	\$ 129,856.83*	\$ 62,563.00	\$ 61,314.47	\$ 26,195.82	\$ 1,484.50	\$ 5,001.94	\$ 36.00	\$ 8,265.00	\$ 8,722.60	\$ 172.00	\$ 1,078.50	\$ 1,242.00	

\*Includes \$16,093.56 Estimated Valuation Surplus Commodities.



### ATCHISON COUNTY

113

#### V—ANALYSIS OF WORK RELIEF PROGRAM BY PROJECT—January 1, through December 31, 1934

Sponsor	Description of Project	Wages & Salaries		Team, Truck & Equip.		Materials	Other Costs	Distribution of Costs			Total Costs
		Relief	Non-Relief	Relief	Non-Relief			Federal Funds	State Funds	Local Contributions	
Cities											
Atchison.. Repair*, Reconst.-Streets, etc.		\$ 1,169.00	\$ 889.10	\$ 8.20	\$ 9.31	\$ 67.55	\$ 232.10	\$ 1,177.20	\$	\$ 1,198.06	\$ 2,375.26
Muscotah.. Repair, Reconst.-Streets, etc.		405.60				54.23	3.09	405.60		57.32	462.92
Lancaster.. Repair, Reconst.-Streets, etc.		211.20	29.60			154.40		211.20		184.00	395.20
Huron.. Repair, Reconst.-Streets, etc.		177.60	58.80			279.84	4.85	177.60		343.49	521.09
Muscotah.. Repair, Reconst.-Pub. Utilities		292.80	39.50			281.85		292.80		321.35	614.15
Atchison.. Repair, Reconst.-Recreational Facilities		2,503.80	1,260.72	7.60	31.29	538.57	114.83	2,511.40		1,945.41	4,456.81
Total City Projects		\$ 4,760.00	\$ 2,277.72	\$ 15.80	\$ 40.60	\$ 1,376.44	\$ 354.87	\$ 4,775.80	\$	\$ 4,049.63	\$ 8,825.43
Schools											
Board of Educ.-Repair, Reconst. of School Buildings and Grounds		\$ 1,627.35	\$ 953.23		\$ 41.00	\$ 1,539.24	\$ 168.77	\$ 1,584.00		\$ 2,745.59	\$ 4,329.59
Board of Educ.-Co. Com. H. S. Repair, Reconst. of School Buildings & Grounds		830.40				166.12		830.40		166.12	996.52
Total School Projects		\$ 2,457.75	\$ 953.23		\$ 41.00	\$ 1,705.36	\$ 168.77	\$ 2,414.40		\$ 2,911.71	\$ 5,326.11
County											
Atchison County											
Repair of Roads		\$ 5,717.13	\$ 5,595.75		\$ 1,592.41	\$ 9,905.53	\$ 190.13	\$ 6,288.27		\$ 16,712.68	\$ 23,000.95
Repair of Public Buildings		271.20						271.20			271.20
Repair of Public Buildings		278.40						278.40			278.40
Repair of Public Buildings		280.60				148.87		429.47		4.80	434.27
Repair of Public Buildings		19.20						19.20			19.20
Repair of Public Buildings		51.20						51.20			51.20
New Const. of Recreational Facilities, etc.		24,919.05	3,591.50	872.80	9,536.53	8,841.03	558.43	41,487.47		6,831.87	48,319.34
Control of Pests		300.00						300.00			300.00
Emergency Wells		3,528.00	112.00		86.18	870.51		4,154.49		442.20	4,596.69
Engineers (Water Conservation)			1,273.50					1,273.50			1,273.50
Prod. & Dist. Gds. to Needy (Cloth.)		2,462.00	45.00				280.97	2,626.00		161.97	2,787.97
Prod. & Dist. Gds. to Needy (Wood)		2.40		5.60			40.89	8.00		40.89	48.89
Prod. & Dist. Gds. to Needy (Baling Feed)		381.00		50.40	200.00		141.44	772.84			772.84
Prod. & Dist. Gds. to Needy (Soup-Lunches)			225.00				11.10			11.10	225.00
Pub. Ed. Arts & Res. (Clerical)		161.40	8,690.55		79.85		808.49	4,908.21		4,832.08	9,740.29
Administrative Projects											
Total County Projects		\$38,371.58	\$19,532.30	\$ 928.80	\$11,494.97	\$ 19,765.94	\$ 2,031.45	\$ 63,087.45		\$ 29,037.59	\$ 92,125.04
State & Federal											
Fed. Hous. Ad. of Kans., Surv. of Houses											
Needing Repair		\$ 877.90	\$ 408.00					\$ 1,285.90			\$ 1,285.90
State, Feed, Transport, & Adm. Cattle Prog.		31.20	157.50					188.70			188.70
Homstd. Rehab. Div., Feeding, Transporting, etc., AAA Surplus Hogs		8.10						8.10			8.10
Nat. Em. Coun. & NRA, Labor Adjust. & Fair Trade Practice		90.00						90.00			90.00
St. Bd. Health, Collect. & Class. Vital Stat.		9.00						9.00			9.00
State, School Recreational Survey		39.00						39.00			39.00
Total State & Federal Projects		\$ 1,055.20	\$ 565.50					\$ 1,620.70			\$ 1,620.70
Grand Total		\$46,644.53	\$23,328.75	\$ 944.60	\$11,576.57	\$ 22,847.74	\$ 2,555.09	\$ 71,898.35		\$ 35,998.93	\$ 107,897.28

\*Repair Does Not Include Maintenance.

#### VI—DISTRIBUTION OF COMMODITIES SUPPLIED BY FSRC AND KERC FOR THE YEAR 1934

Max. Relief Cases						Max. Relief Cases					
Unit of Measure	Amount Distributed	in Any 1 Mo.	Actual Costs	Estimated Valuation	Total	Unit of Measure	Amount Distributed	in Any 1 Mo.	Actual Costs	Estimated Valuation	Total
Commodities Furnished by FSRC						Commodities Furnished by FSRC					
Apples			\$	\$	\$	Pork, Smoked		\$	\$	\$	
Beef, Fresh						Sausage	Pounds	1,181	636	177.15	177.15
Beef, Canned	Cans	2,544	460	636.00	636.00	Soup, Canned					
Blankets						Mattresses*		79	47	790.00	790.00
Butter	Pounds	7,403	673	1,850.75	1,850.75	Comforts*	Pieces	46	46	149.50	149.50
Cheese	Pounds	1,095	696	229.75	229.75	Pillow Cases*					
Flour	24lb Sacks	324	173	324.00	324.00	Sheets*					
Grain & Feed						Huck & Terry Towels*					
Lard	Pounds	4,348	460	391.32	391.32	New Garments**		665	77	696.25	696.25
Milk-wheat-O	Pounds	1,380	331	138.00	138.00	Old Garments**		387	52	626.30	626.30
Pork, Salt	Pounds	7,538	377	603.04	603.04	Total			\$	\$ 6,834.95	\$ 6,834.95
Pork, Smoked	Pounds	21,082	712	3,583.94	3,583.94	Total Commodities			\$	\$14,905.53	\$14,905.53
Potatoes		10,738	459	107.38	107.38	Fuel Distribution FSRC					
Rice						Coal	Tons	244.40		\$	\$ 1,188.03
Sugar						Fuel Distribution KERC					
Tongue, Frozen	Pounds	2,064	200	206.40	206.40	Coal	Tons	233.39	1,421.73	1,421.73	
Total			\$	\$ 8,070.58	\$ 8,070.58	Gas					
Commodities Purchased by KERC						Dist. Costs of FSRC					
Beef, Fresh	Pounds	5,659	286	\$ 848.85	\$ 848.85	Coal Paid by KERC			488.80	488.80	
Beef, Canned	1 1/4lb Cans	12,162	719	2,432.40	2,432.40	Total			\$1,910.53	\$ 1,188.03	\$ 3,098.56
Cod Liver Oil	Bottles	72	36	36.00	36.00	Grand Total			\$1,910.53	\$16,093.56	\$18,004.09
Eggs						*Raw Materials Furnished by FSRC. Finished Products Accomplished under Work Projects.					
Flour						**Materials Furnished for Work Projects from County and Private Funds.					
Grain & Feed	Bushels	2,157		1,078.50	1,078.50						

\*Raw Materials Furnished by FSRC. Finished Products Accomplished under Work Projects.  
\*\*Materials Furnished for Work Projects from County and Private Funds.

#### VII—ANALYSIS OF COUNTY ADMINISTRATIVE COSTS—1934

	Non-Relief Payrolls		Relief Payrolls		Equipment Rental	Materials	Other Costs	Total Costs
	Aver. Monthly No. Employed	Earnings	Aver. Monthly No. Empl'd	Earnings				
Administrative Projects								
County Funds	5.5	\$ 3,943.74			\$ 79.85		\$ 808.49	\$ 4,832.08
Federal Funds	6.8	4,746.61	1.3	161.40				4,908.21
Additional Administration—County Funds*	3.0	660.00					321.99	981.99
Supplemental Salaries								
City Funds								
Private Funds		333.28						333.28
Total Costs		\$ 9,683.83		\$ 161.40	\$ 79.85		\$ 1,130.48	\$ 11,055.56

\*Additional Administration January through March 31.



### VIII—ANALYSIS OF CIVIL WORKS ADMINISTRATION PROJECTS FOR THE ENTIRE PERIOD, NOVEMBER 17, 1933, THROUGH JUNE 30, 1934

		FEDERAL FUNDS				SPONSORS' CONTRIBUTIONS				DISTRIBUTION OF COSTS		
Sponsor	Description of Project	CWA Payrolls		Purchase Orders		Wages	Team-Truck Equip. Exp.	Materials	Other Costs	Federal Funds	Local Funds	Gr'd Total Expenditures
		Wages	Team-Truck Equip. Exp.	Team-Truck Equip. Exp.	Materials							
Cities												
City of Atchison	Street Improvement	\$ 1,127.25	\$ 621.35	\$ .....	\$ 278.40	\$ .....	\$ .....	\$ .....	\$ .....	\$ 2,027.00	\$ .....	\$ 2,027.00
City of Muscotah	Street Improvement	43.20	.....	.....	.....	.....	.....	.....	.....	43.20	.....	43.20
City of Huron	Street Improvement	282.84	.....	.....	.....	.....	.....	.....	.....	282.84	.....	282.84
City of Atchison	Street Improvement	144.00	115.60	.....	.....	.....	.....	.....	.....	259.60	.....	259.60
City of Atchison	Work on Parks & Playgrounds	6,625.95	1,949.05	.....	280.60	.....	.....	1,043.80	1,476.85	8,855.60	2,520.65	11,376.25
Total City Projects		\$ 8,223.24	\$2,686.00	\$ .....	\$ 559.00	\$ .....	\$ .....	\$ 1,144.21	\$1,476.85	\$11,468.24	\$ 2,621.06	\$ 14,089.30
Schools												
Bd. of Ed.—Atchison	Work on Grounds & Building	\$ 3,268.40	.....	.....	\$ 473.90	\$ .....	\$ 79.10	\$ 1,028.97	\$ 915.08	\$ 3,742.30	\$ 2,023.15	\$ 5,765.45
Bd. of Ed.—Effingham	Work on Grounds & Building	90.00	.....	.....	.....	.....	.....	.....	.....	90.00	.....	90.00
Total School Projects		\$ 3,358.40	\$ .....	\$ .....	\$ 473.90	\$ .....	\$ 79.10	\$ 1,028.97	\$ 915.08	\$ 3,832.30	\$ 2,023.15	\$ 5,855.45
County												
Atchison County	Roads	\$32,979.08	\$10,206.32	.....	\$1,801.47	\$ .....	\$8,534.55	\$ 9,982.72	\$5,400.56	\$45,076.87	\$23,917.83	\$ 68,994.70
Atchison County	Repairing Memorial Hall	4,878.24	.....	.....	.....	.....	.....	1,003.44	.....	4,878.24	1,003.44	5,881.68
Atchison County	Local CWA Office	2,254.16	.....	.....	.....	.....	.....	655.47	.....	2,254.16	655.47	2,909.63
Atchison County	Poor Relief	640.00	.....	.....	.....	.....	.....	40.48	192.46	640.00	232.94	872.94
Atchison County	Re-employment Office	1,754.00	.....	.....	.....	.....	.....	.....	120.00	1,754.00	120.00	1,874.00
Atchison County	Digging Well	126.90	.....	.....	177.60	.....	.....	.....	.....	304.50	.....	304.50
Total County Projects		\$42,632.38	\$10,206.32	.....	\$2,069.07	\$ .....	\$8,534.55	\$11,026.64	\$6,368.49	\$54,907.77	\$25,929.68	\$ 80,837.45
State & Federal												
State	Compensation	\$ 101.15	.....	.....	.....	.....	.....	.....	.....	\$ 101.15	.....	\$ 101.15
State	Sign Boards	105.60	.....	.....	38.06	.....	.....	.....	.....	143.66	.....	143.66
State	Orchard Sanitation & Pest Control	2,422.80	.....	.....	.....	.....	13.20	315.00	.....	2,422.80	328.20	2,751.00
Federal	Farm Mortgage & Land Value	828.50	.....	.....	.....	.....	.....	.....	.....	828.50	.....	828.50
Total State & Federal Projects		\$ 3,458.05	\$ .....	\$ .....	\$ 38.06	\$ .....	\$ 13.20	\$ 315.00	.....	\$ 3,496.11	\$ 328.20	\$ 3,824.31
Grand Total		\$57,672.07	\$12,892.32	.....	\$5,140.03	\$ .....	\$8,626.85	\$13,514.82	\$ 8,760.42	\$75,794.42	\$30,902.09	\$104,696.51

114

ATCHISON COUNTY

### IX—CIVIL WORKS ADMINISTRATION—EMPLOYMENT, MAN HOURS, AND WAGES FOR THE ENTIRE PERIOD, NOVEMBER 17, 1933, THROUGH JUNE 30, 1934

Atchison County	Employment Data Covering Work Projects and Tool and Sundry Equipment Projects						Employment Data Covering Administrative Projects				Summary						
	All Payrolls Covering Projects Employing Principally Labor			All Payrolls Covering Drivers of Their Own Teams, Trucks and Other Mechanical Equipment			Payrolls on Project Employing Chiefly Professional & Cler. Wks		Payrolls for Em'ees of State & Local Administrative Proj.		Total Number Employees		Total Earnings, Wages, Salaries and Hire		Accident Compensation	Grand Total	
	Average Weekly No. of Employees	Total Man Hours Worked	Total Wages Earned	Average Weekly No. of Employees	Total Hours Worked	Total Earnings Wages-Hire	Average Weekly No. of Em'ees	Salaries and Wages Earned	Average Weekly No. of Employees	Salaries and Wages Earned	Weekly Average	Total	Average Weekly Wage	Average Number Men			Total Amount
Total 1933	264.0	38,781	\$16,883.91	41.0	5,218	\$ 3,543.39	0.5	\$ 34.20	7.0	\$ 576.50	312.5	\$21,038.00	\$11.22	.....	\$ ..... .....	\$21,038.00	
Total—First 3 Mo. 1934	307.0	77,442	35,378.23	50.0	12,565	9,271.66	3.6	765.50	12.9	2,745.50	373.5	48,160.89	9.92	0.8	78.65	48,239.54	
Total—Second 3 Mo. 1934	8.0	1,331	655.45	0.5	86	97.90	1.8	388.00	1.0	123.00	11.3	1,264.35	8.60	0.3	22.50	1,286.85	
Total	177.5	117,554	\$52,917.59	28.2	17,869	\$12,912.95	2.3	\$1,187.70	7.0	\$3,445.00	215.0	\$70,463.24	\$10.24	0.4	\$101.15	\$70,564.39	

## 115

*Assessed Valuation*—\$17,075,965 (March 1, 1934); *Bonded Indebtedness*—None (October 1, 1934); *Population*—9,264 (March, 1934); *Total Population on Relief*—1,444; *Per Cent*—15.6 (December, 1934).

\*Excludes All Non-relief Obligations Except Payrolls.

Barber county is chiefly agricultural, and therefore, because of the continued drought and general crop failure during 1934, the number of persons who were dependent upon relief was increased. Farm labor is the predominant form of employment and very little of this regular employment on farms was possible last year. The closing of the poultry industry at Kiowa also added to the relief rolls, and the one main industry in the county, a cement plant at Medicine Lodge with mines located at Sun City, continued its policy of retrenchment during 1934, according to county relief officials.

\*Cases Included in Schedule III. †Cases Included in Schedule VI. ‡Case Averages Based on Actual Number of Months Program Was in Operation.



### II—SUMMARY OF ALL OBLIGATIONS INCURRED FOR RELIEF AND THE WORK RELIEF PROGRAM FOR YEAR 1934 AND CIVIL WORKS ADMINISTRATION FROM NOVEMBER 17, 1933, THROUGH JUNE 30, 1934

Consolidated Statement of All Obligations for These Purposes Against Federal, State, Local Public, Private and Private Welfare Agency Funds

ITEMS	Federal Funds	County Funds	City Funds	Township Funds	School Funds	Private Funds	Total Funds	State Funds	Private Agcy. Funds	Grand Total
<b>Section A</b>										
Work Relief—Wages on Approved Projects	\$ 63,877.19	\$	\$	\$	\$	\$	\$ 63,877.19	\$	\$	\$ 63,877.19
<b>Section B</b>										
<b>Non-Relief Obligations—Work Relief Pro.</b>										
<b>Materials</b>										
Aggregate Materials & Stone	\$ 12.00	\$ 163.18	\$	\$	\$	\$ 125.95	\$ 301.13	\$ 211.40	\$	\$ 512.53
Cement	630.35	82.26	4.98			964.35	1,681.94			1,681.94
Bituminous Materials	65.63	13.24					78.87			78.87
Petroleum Products		873.90	257.99				1,131.89	31.49		1,163.38
Iron & Steel	875.13	54.64	585.76				1,723.18	5,074.75		7,397.93
Clay Products		23.05				207.65	23.05			23.05
Lumber	469.45	262.39	112.18			1,632.42	2,476.44	272.64		2,749.08
Plumbing & Heating		191.38				127.94	319.32			319.32
Hardware	85.51	51.52	64.03			213.51	415.57	37.22		452.79
Explosives		27.50					27.50	29.80		57.30
Paint & Paint Materials	15.00	325.89				123.90	464.79	1.25		466.04
Total Materials	\$ 2,154.07	\$ 2,068.95	\$ 1,024.94	\$	\$	\$ 3,395.72	\$ 8,643.68	\$ 6,258.55	\$	\$ 14,902.23
<b>Team, Truck, &amp; Equipment Expense</b>										
Equipment Parts & Supplies	\$	\$ 281.27	\$ 660.34	\$	\$	\$	\$ 941.61	\$ 158.80	\$	\$ 1,100.41
Office Supplies & Equipment		399.97					399.97	50.67		450.64
Rental of Equipment	1,517.00	355.75	556.69			61.85	2,491.29	738.30		3,229.59
Total Team, Truck, & Equip. Exp.	\$ 1,517.00	\$ 1,036.99	\$ 1,217.03	\$	\$	\$ 61.85	\$ 3,832.87	\$ 947.77	\$	\$ 4,780.64
<b>Other Costs</b>										
Tools	\$	\$ 68.52	\$ 16.33	\$	\$	\$	\$ 84.85	\$ 7.28	\$	\$ 92.13
Rental of Premises										
Other Services	55.10	1,187.05					1,242.15	923.82		2,165.97
Other Charges										
Miscellaneous	1,021.91	324.07	29.00			18.40	1,393.38	395.09		1,788.47
Total Other Costs	\$ 1,077.01	\$ 1,579.64	\$ 45.33	\$	\$	\$ 18.40	\$ 2,720.38	\$ 1,326.19	\$	\$ 4,046.57
Wages & Salaries	\$ 8,081.48	\$ 3,885.80	\$ 995.12	\$	\$	\$ 54.45	\$ 13,017.94	\$ 4,618.75	\$	\$ 17,636.69
Total Non-Relief Obligations	\$ 12,829.56	\$ 8,571.47	\$ 3,283.42	\$	\$	\$ 3,530.42	\$ 28,214.87	\$ 13,151.26	\$	\$ 41,366.13
Total Sections A & B	\$ 26,706.75	\$ 8,571.47	\$ 3,283.42	\$	\$	\$ 3,530.42	\$ 92,092.06	\$ 13,151.26	\$	\$ 105,243.32
<b>Section C</b>										
Additional County Work Relief	\$	\$ 240.70	\$	\$	\$	\$	\$ 240.70	\$	\$	\$ 240.70
Direct Relief	98.00	4,838.18					4,936.18			4,936.18
Admin. Costs Prior to Admin. Projects										
Wages & Salaries		460.00					460.00			460.00
Other Costs		173.26					173.26			173.26
Total	\$	\$ 633.26	\$	\$	\$	\$	\$ 633.26	\$	\$	\$ 633.26
Total Section C	\$ 98.00	\$ 5,712.14	\$	\$	\$	\$	\$ 5,810.14	\$	\$	\$ 5,810.14
<b>Section D</b>										
Relief from Special Programs	\$ 1,462.96	\$	\$	\$	\$	\$	\$ 1,462.96	\$	\$	\$ 1,462.96
Other Relief from County Funds		3,605.09					3,605.09			3,605.09
Other Relief from City Funds										
Relief from Private Welfare Agency Funds										
Surplus Commodities & Fuel—Est. Value	12,404.46							1,176.48		1,176.48
Supplemental Administrative Salaries							12,404.46			12,404.46
Total Section D	\$ 13,897.42	\$ 3,605.09	\$	\$	\$	\$	\$ 17,472.51	\$	\$ 1,176.48	\$ 18,648.99
Grand Total Sections A to D, Incl.	\$ 90,672.17	\$ 17,888.70	\$ 3,283.42	\$	\$	\$ 3,530.42	\$ 115,374.71	\$ 13,151.26	\$ 1,176.48	\$ 129,702.45
<b>Section E</b>										
<b>Civil Works Administration</b>										
<b>Work Projects</b>										
Payrolls	\$ 53,186.31	\$ 1,380.80	\$	\$	\$	\$	\$ 54,567.11	\$	\$	\$ 54,567.11
Other Costs	870.17	3,313.02	581.68				4,764.87	7,607.43		12,372.30
Total	\$ 54,056.48	\$ 4,693.82	\$ 581.68	\$	\$	\$	\$ 59,331.98	\$ 7,607.43	\$	\$ 66,939.41
<b>Administration</b>										
Payrolls	\$ 1,827.37	\$	\$	\$	\$	\$	\$ 1,827.37	\$	\$	\$ 1,827.37
Other Costs		149.62					149.62			149.62
Total	\$ 1,827.37	\$ 149.62	\$	\$	\$	\$	\$ 1,976.99	\$	\$	\$ 1,976.99
Total Civil Works Administration	\$ 55,883.85	\$ 4,843.44	\$ 581.68	\$	\$	\$	\$ 61,308.97	\$ 7,607.43	\$	\$ 68,916.40
Grand Total	\$ 146,556.02	\$ 22,732.14	\$ 3,865.10	\$	\$	\$ 3,530.42	\$ 176,683.68	\$ 20,758.69	\$ 1,176.48	\$ 198,618.85

### III—MONTHLY RECORD OF RESIDENT CASES SHOWING APPLICATIONS RECEIVED, CASES OPENED, ACTIVE AND INACTIVE CASES, AND CASES CLOSED FOR YEAR 1934

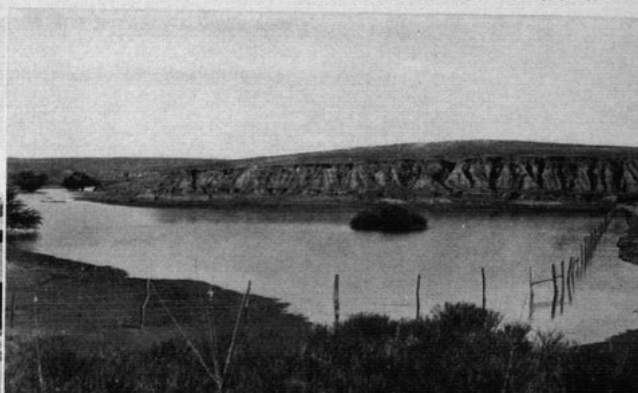
	Cases at Beginning of Mo.	Applica-tions Rec'd	Total Cases Opened	New Cases Opened	Old Cases Re-Opened	Total Mo. Case Load	Cases Rec'd Relief	*Cases Hemst'd Rehab. Pre-lect	Cases Received No Relief	Total Cases Closed	Cases Closed Because Employ't	Cases Closed Other Reasons	Cases Open End of Mo.	Cases Active End of Month	Cases Inactive End of Month
January	48	16	16	15	1	64	55	...	9	25	15	10	39	39	...
February	39	11	5	...	...	44	...	...	...	7	...	7	37	37	...
March	37	384	281	143	138	318	309	...	...	19	...	19	299	299	...
April	299	50	48	15	33	347	296	...	51	143	16	127	204	204	...
May	204	40	37	37	...	241	241	...	...	23	20	3	218	218	...
June	218	14	14	11	3	232	198	...	34	34	...	...	198	198	...
July	198	56	56	16	40	254	254	...	...	...	...	...	254	254	...
August	254	182	110	69	41	364	353	...	11	...	...	10	353	353	...
September	353	87	35	24	11	388	337	...	51	51	3	48	337	337	...
October	337	88	27	7	20	364	337	...	27	15	12	12	337	337	...
November	337	92	36	20	16	373	321	6	52	52	12	40	321	321	...
December	321	46	33	12	21	354	331	8	23	23	8	15	331	331	...

\*Included in Cases Receiving Relief.

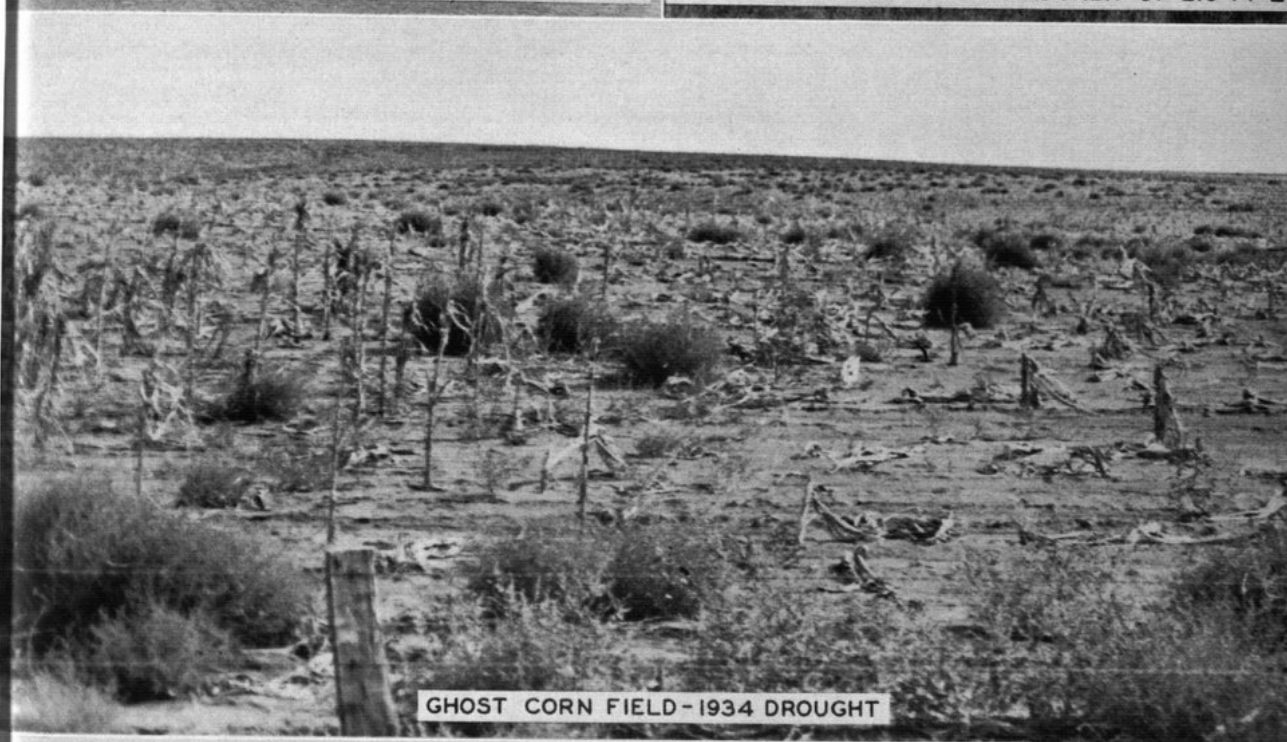
## BARBER COUNTY



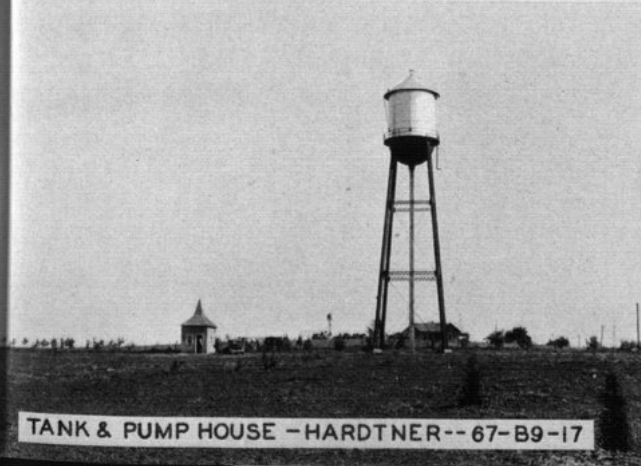
AMERICAN LEGION BLDG.-MEDICINE LODGE--67-B4-9



NON-RELIEF FARM POND-HARDTNER--67-E10-F1-27



GHOST CORN FIELD - 1934 DROUGHT



TANK & PUMP HOUSE - HARDTNER-- 67-B9-17



COUNTY RELIEF OFFICE-MEDICINE LODGE--67-B4-19



### IV—ANALYSIS OF PAYMENTS IN CASH OR IN KIND FOR ALL RELIEF GRANTED FROM FEDERAL, LOCAL PUBLIC, AND PRIVATE WELFARE AGENCY FUNDS—1934

Source of Funds	Total Relief Extended	Payments in Cash	Payments For Which Type Not Defined	Payments in Kind	ANALYSIS OF PAYMENTS IN KIND									
					Food and Household Necessities	Shelter	Clothing	Fuel	Public Utilities	Medical Care	Institutional Care	Subsistence Crops	Feed for Stock	All Other
January—Federal.....	\$ 2,171.71	\$ 239.25	\$ 1,932.46	\$ 244.65	\$ 187.81	\$ 19.11	\$ 19.08			\$ 130.75	\$ 135.47		\$1,500.00	\$
County.....	835.40	131.35	704.05	330.82	68.82									
City.....														
Private Agencies.....	196.94		196.94											
Total.....	\$ 3,204.05	\$ 370.60	\$ 2,636.51	\$ 575.47	\$ 68.82	\$ 206.92	\$ 19.08			\$ 130.75	\$ 135.47		\$1,500.00	\$
February—Federal.....	\$ 988.21	\$ 504.30	\$ 483.71	\$ 430.95	\$ 52.76					\$ 130.85	\$ 134.85			\$ 11.16
County.....	749.12	130.85	618.27	266.66	59.50			23.70						
City.....														
Private Agencies.....	54.25		54.25											
Total.....	\$ 1,791.58	\$ 635.35	\$ 1,101.98	\$ 697.61	\$ 59.50	\$ 54.31	\$ 23.70			\$ 120.85	\$ 134.85			\$ 11.16
March—Federal.....	\$ 7,161.14	\$ 4,198.64	\$ 2,962.50	\$ 270.90	\$ 18.60							\$ 98.00	\$2,575.00	\$
County.....	679.26	1.95	677.31	305.07	46.86			16.00		69.70	166.68			73.00
City.....														
Private Agencies.....	26.55		26.55											
Total.....	\$ 7,866.95	\$ 4,200.59	\$ 3,639.81	\$ 575.97	\$ 46.86	\$ 18.60	\$ 16.00			\$ 69.70	\$ 166.68	\$ 98.00	\$2,575.00	\$ 73.00
April—Federal.....	\$ 7,094.09	\$ 5,112.65	\$ 1,951.41	\$ 468.69	\$ 62.72								\$1,420.00	\$ 60.00
County.....	607.33	61.57	605.76	285.84	56.62	3.50	10.00			58.15	131.65			
City.....														
Private Agencies.....	62.72		62.72											
Total.....	\$ 7,764.11	\$ 5,174.22	\$ 2,557.17	\$ 754.53	\$ 56.62	\$ 66.22	\$ 10.00			\$ 58.15	\$ 131.65		\$1,420.00	\$ 60.00
May—Federal.....	\$ 5,269.53	\$ 5,125.95	\$ 143.58	\$ 103.53	\$ 40.05									\$ 15.50
County.....	758.22		758.22	278.02	31.36			7.20		283.90	133.61			
City.....														
Private Agencies.....	40.05		40.05											
Total.....	\$ 6,067.80	\$ 5,125.95	\$ 40.05	\$ 901.80	\$ 381.55	\$ 31.36	\$ 48.68	\$ 7.20		\$ 283.90	\$ 133.61			\$ 15.50
June—Federal.....	\$ 4,565.95	\$ 3,507.70	\$ 1,058.25	\$ 1,046.49	\$ 11.76									\$ 39.60
County.....	599.89		599.89	238.65	46.25	3.14	19.10			104.15	149.00			
City.....														
Private Agencies.....	11.76		11.76											
Total.....	\$ 5,177.60	\$ 3,507.70	\$ 1,658.14	\$ 1,285.14	\$ 46.25	\$ 14.90	\$ 19.10			\$ 104.15	\$ 149.00			\$ 39.60
July—Federal.....	\$ 6,989.86	\$ 6,565.05	\$ 424.81	\$ 424.81										\$ 1.45
County.....	717.59		717.59	332.39	41.04			1.20	1.83	209.63	130.05			
City.....														
Private Agencies.....														
Total.....	\$ 7,707.45	\$ 6,565.05	\$ 1,142.40	\$ 757.20	\$ 41.04			\$ 1.20	\$ 1.83	\$ 209.63	\$ 130.05			\$ 1.45
August—Federal.....	\$ 10,356.73	\$ 9,712.20	\$ 644.53	\$ 640.61	\$ 3.92									\$ 60
County.....	769.42	5.00	764.42	343.65	36.56			1.88	4.00	209.29	168.44			
City.....														
Private Agencies.....	3.92		3.92											
Total.....	\$ 11,130.07	\$ 9,717.20	\$ 1,408.95	\$ 984.26	\$ 36.56	\$ 3.92	\$ 1.88	\$ 4.00	\$ 209.29	\$ 168.44				\$ 60
September—Federal.....	\$ 7,059.88	\$ 6,408.20	\$ 651.68	\$ 553.25	\$ 98.43									\$ 223.84
County.....	710.62		710.62	282.19	29.85	1.49		1.50		46.00	125.75			
City.....														
Private Agencies.....	101.41		101.41											
Total.....	\$ 7,871.91	\$ 6,408.20	\$ 1,362.30	\$ 835.44	\$ 29.85	\$ 99.92		\$ 1.50	\$ 46.00	\$ 125.75				\$ 223.84
October—Federal.....	\$ 8,324.35	\$ 7,837.70	\$ 486.65	\$ 326.40		\$ 160.25								\$ 13.96
County.....	682.50		682.50	276.05	26.21	98	10.90	1.50		219.95	132.95			
City.....														
Private Agencies.....	166.85		166.85											
Total.....	\$ 9,173.70	\$ 7,837.70	\$ 1,169.15	\$ 602.45	\$ 26.21	\$ 161.23	\$ 10.90	\$ 1.50	\$ 219.95	\$ 132.95				\$ 13.96
November—Federal.....	\$ 8,268.10	\$ 7,419.74	\$ 848.36	\$ 742.92	\$ 25.37	\$ 105.44								\$ 7.50
County.....	674.44		674.44	293.27	25.37	6.35		1.50		212.10	128.35			
City.....														
Private Agencies.....	142.64		142.64											
Total.....	\$ 9,085.18	\$ 7,419.74	\$ 1,424.64	\$ 1,036.19	\$ 25.37	\$ 111.79		\$ 1.50	\$ 212.10	\$ 128.35				\$ 7.50
December—Federal.....	\$ 9,423.09	\$ 8,708.57	\$ 914.52	\$ 736.91		\$ 177.61								\$ 17.91
County.....	840.18		840.18	265.20	24.71	9.17	6.25	1.50		345.90	169.51			
City.....														
Private Agencies.....	369.39		369.39											
Total.....	\$ 10,632.66	\$ 8,708.57	\$ 1,754.70	\$ 1,002.11	\$ 24.71	\$ 186.78	\$ 6.25	\$ 1.50	\$ 345.90	\$ 169.51				\$ 17.91
Year 1934—Federal.....	\$ 77,842.61*	\$ 65,340.15	\$ 12,502.46*	\$ 5,990.11	\$ 53.92	\$ 919.35	\$ 115.31	\$ 11.83	\$ 2,010.37	\$ 1,706.34	\$ 98.00	\$5,495.00		\$ 464.52
County.....	8,683.97	330.72	8,353.25	3,497.81	493.15									
City.....														
Private Agencies.....	1,176.48		1,176.48											
Grand Total.....	\$ 87,703.06*	\$ 65,670.87	\$ 1,176.48	\$ 20,855.71*	\$ 9,487.92	\$ 493.15	\$ 973.27	\$ 115.31	\$ 11.83	\$ 2,010.37	\$ 1,706.34	\$ 98.00	\$5,495.00	\$ 464.52

\*Includes \$12,404.46 Estimated Valuation Surplus/Commodities.



### BARBER COUNTY

119

#### V—ANALYSIS OF WORK RELIEF PROGRAM BY PROJECT—January 1, through December 31, 1934

Sponsor	Description of Project	Wages & Salaries		Team, Truck & Equip.		Materials	Other Costs	Distribution of Costs			Total Costs
		Relief	Non-Relief	Relief	Non-Relief			Federal Funds	State Funds	Local Contributions	
Cities											
Sharon	Repair*, Reconst.—Streets, etc.	\$ 57.00	\$	\$ 12.00	\$	\$	\$	\$ 69.00	\$	\$	\$ 69.00
Hazelton	Repair, Reconst.—Streets, etc.	129.50		35.60				165.10			165.10
Medicine											
Lodge	Repair, Reconst. Pub. Bldgs.	1,233.05		27.45		2,757.51	18.40	1,260.50		2,775.91	4,036.41
Hardtner	New Const. of Pub. Utilities	252.00		19.20				271.20			271.20
Medicine											
Lodge	Repair, Reconst.—Pub. Util.	1,135.30	967.12	196.80	2,011.28	2,185.74	50.15	3,380.47		3,165.92	6,546.39
Kiowa	Repair, Reconst.—Recreation Fac.	456.00	54.45	59.20	4.65	591.76		515.20		650.86	1,166.06
Medicine											
Lodge	Airports	3,730.45	29.00	992.80	32.75	25.57	30.18	4,723.25		117.50	4,840.75
Hazelton	Cemetery Improvement	26.60		11.00	57.20	46.45		37.60		103.65	141.25
Hazelton	Emergency Wells	238.00		52.80	39.55	108.16	.80	422.82		16.49	439.31
Total City Projects		\$ 7,257.90	\$ 1,050.57	\$ 1,406.85	\$ 2,145.43	\$ 5,715.19	\$ 99.53	\$ 10,845.14	\$	\$ 6,830.33	\$ 17,675.47
County											
Barber County											
Repair, Reconst.—Roads		\$ 5,211.85	\$ 1,042.00	\$ 3,552.45	\$ 303.74	\$ 727.99	\$ 73.62	\$ 8,764.30	\$	\$ 2,147.35	\$ 10,911.65
Repair, Reconst.—Pub. Buildings		103.35	238.85			170.61	12.44	103.35		421.90	525.25
Repair, Reconst.—Pub. Buildings		906.60	199.35	66.40		1,046.22	164.97	1,439.29		944.25	2,383.54
Repair, Reconst.—Bridges		496.60	49.95	134.80		221.34	7.50	631.40		278.79	910.19
Engineers (Water Conservation)			1,907.55		54.36	75.80	57.20	1,957.10		137.81	2,094.91
Prod. & Dist. Gds. to Needy (Cloth.)		1,171.20			35	21.62	54.09	1,221.88		25.38	1,247.26
Prod. & Dist. Gds. to Needy (Bal. Feed)		298.40	12.25	86.40	682.75	50.00	2.52	1,044.80		87.52	1,132.32
Pub. Wel.—Garden & Farm Ponds—Relief		1,401.00		714.00	6.35	251.39	926.88	3,290.62		9.00	3,299.62
Pub. Wel.—Gard. & Farm Ponds—Non-Rel.		1,894.60		314.80		161.80	6.40	2,369.40		8.20	2,377.60
Pub. Ed. Arts and Res. (Clerical)			533.00					533.00			533.00
Administrative Projects			7,688.82		433.54	53.18	1,246.28	5,389.68		4,032.14	9,421.82
Total County Projects		\$11,483.60	\$11,671.77	\$ 4,868.85	\$ 1,481.09	\$ 2,779.95	\$ 2,551.90	\$ 26,744.82	\$	\$ 8,092.34	\$ 34,837.16
State & Federal											
State High. Dep.	Repair, Reconst. of Hwy.	\$23,771.15	\$ 4,657.55	\$14,117.24	\$ 1,154.12	\$ 6,407.09	\$ 1,395.14	\$ 37,888.39	\$13,151.26	\$ 462.64	\$ 51,502.29
Fed. Hous. Ad. of Ka., Surv. of Houses											
Needing Repair		237.60						237.60			237.60
State, Feed, Shipping & Adm. Cattle Prog.		298.60	202.40	22.40				523.40			523.40
Homstd. Rehab. Div., Feeding, Transporting, etc., AAA Surplus Hogs		68.40						68.40			68.40
State, Handling of Sheep		2.40	2.40					4.80			4.80
St. Bd. Health, Collect & Class. Vital Stat.		60.00						60.00			60.00
State, Personnel for Local Re-employment Office		105.00						105.00			105.00
K. S. C. Dept. Ag. & Ec., Determ. of Land Ownership		68.40						68.40			68.40
State, Kansas State Fish and Game Comm.		64.80						64.80			64.80
State, Child Health		44.00	22.00					66.00			66.00
State, School Finance Survey			30.00					30.00			30.00
Total State & Federal Projects		\$24,720.35	\$ 4,914.35	\$14,139.64	\$ 1,154.12	\$ 6,407.09	\$ 1,395.14	\$ 39,116.79	\$13,151.26	\$ 462.64	\$ 52,730.69
Grand Total		\$43,461.85	\$17,636.69	\$20,415.34	\$ 4,780.64	\$ 14,902.23	\$ 4,046.57	\$ 76,706.75	\$13,151.26	\$ 15,385.31	\$ 105,243.32

\*Repair Does Not Include Maintenance.

#### VI—DISTRIBUTION OF COMMODITIES SUPPLIED BY FSRC AND KERC FOR THE YEAR 1934

Max. Relief Cases					Max. Relief Cases						
Unit of Measure	Amount Distributed	in Any 1 Mo.	Actual Costs	Estimated Valuation	Total	Unit of Measure	Amount Distributed	in Any 1 Mo.	Actual Costs	Estimated Valuation	Total
Commodities Furnished by FSRC						Pork, Smoked					
Apples			\$	\$	\$	Sausage			\$	\$	\$
Beef, Fresh						Soup, Canned					
Beef, Canned	Cans	3,888	222	972.00	972.00	Mattresses*	4	4		40.00	40.00
Blankets						Comforters*					
Butter	Pounds	660	440	165.00	165.00	Pillow Cases*					
Cheese	Pounds					Sheets*					
Flour	24lb Sacks	170	70	170.00	170.00	Huck & Terry Towels*					
Goat Meat						New Garments**	868	43		919.35	919.35
Grain & Feed	Bushels	2,150		1,075.00	1,075.00	Old Garments**					
Lard	Pounds	1,624	221	146.16	146.16	Total			\$	\$ 7,313.75	\$ 7,313.75
Milkweed-O	Pounds	816	227	81.60	81.60	Total Commodities			\$	\$12,404.46	\$12,404.46
Pork, Fresh						Fuel Distribution—FSRC					
Pork, Salt						Coal			\$	\$	\$
Pork, Smoked	Pounds	13,521	460	2,298.57	2,298.57	Fuel Distribution—KERC					
Potatoes						Coal					
Rice	Pounds	1,488	270	89.28	89.28	Gas					
Sugar						Dist. Costs of FSRC					
Tongue, Frozen	Pounds	931	214	93.10	93.10	Coal Paid by KERC					
Total				\$ 5,090.71	\$ 5,090.71	Total			\$	\$	\$
Commodities Purchased by KERC						Grand Total					
Beef, Fresh	Pounds	3,437	181	\$ 515.55	\$ 515.55				\$	\$12,404.46	\$12,404.46
Beef, Canned	1 1/4lb Cans	6,336	280	1,267.20	1,267.20						
Cod Liver Oil	Bottles										
Eggs											
Flour	12lb Sacks	337	253	151.65	151.65						
Grain & Feed	Bushels	8,840		4,420.00	4,420.00						
						*Raw Materials Furnished by FSRC. Finished Products Accomplished under Work Projects.					
						**Materials Furnished for Work Projects from County and Private Funds.					

\*Raw Materials Furnished by FSRC. Finished Products Accomplished under Work Projects.  
\*\*Materials Furnished for Work Projects from County and Private Funds.

#### VII—ANALYSIS OF COUNTY ADMINISTRATIVE COSTS—1934

	Non-Relief Payrolls		Relief Payrolls		Equipment Rental	Materials	Other Costs	Total Costs
	Aver. Monthly No. Employed	Earnings	Aver. Monthly No. Empl'd	Earnings				
Administrative Projects								
County Funds	3.0	\$ 2,299.14			\$ 433.54	\$ 53.18	\$ 1,246.28	\$ 4,032.14
Federal Funds	8.0	5,389.68						5,389.68
Additional Administration—County Funds*	3.0	460.00					173.26	633.26
Supplemental Salaries								
City Funds								
Private Funds								
Total Costs		\$ 8,148.82			\$ 433.54	\$ 53.18	\$ 1,419.54	\$ 10,055.08

\*Additional Administration January through March 31.



### VIII—ANALYSIS OF CIVIL WORKS ADMINISTRATION PROJECTS FOR THE ENTIRE PERIOD, NOVEMBER 17, 1933, THROUGH JUNE 30, 1934

Sponsor	Description of Project	FEDERAL FUNDS				SPONSORS' CONTRIBUTIONS				DISTRIBUTION OF COSTS		
		CWA Payrolls		Purchase Orders		Wages	Team-Truck Equip. Exp.	Materials	Other Costs	Federal Funds	Local Funds	Gr'd Total Expenditure
		Wages	Team-Truck Equip. Exp.	Team-Truck Equip. Exp.	Materials							
Cities												
City of Kiowa.....	Street Improvement.....	\$ 360.90	\$ 538.65			\$ 93.00	\$ 89.95	\$ 22.58	\$ 890.55	\$ 205.53	\$ 1,105.08	
City of Sharon.....	Street Improvement.....	153.75	135.80			3.00	12.90	11.60	289.55	27.50	317.05	
City of Medicine Lodge.....	Memorial Hall Improvement.....	5.25							5.25		5.25	
City of Medicine Lodge.....	Roadway & Ditching.....	631.69	103.40				243.65	105.00	735.09	348.65	1,083.74	
Total City Projects.....		\$ 1,151.50	\$ 777.85			\$ 96.00	\$ 346.50	\$ 139.18	\$ 1,929.44	\$ 581.68	\$ 2,511.12	
County												
Barber County.....	Roads.....	\$ 7,206.36	\$ 8,012.21			\$ 1,380.80	\$ 706.94	\$ 550.13	\$ 1,251.78	\$ 15,218.57	\$ 3,889.65	\$ 19,108.22
Barber County.....	Local CWA Office.....	785.50							149.62	785.50	149.62	935.12
Barber County.....	Poor Relief.....	439.50							57.40	439.50	57.40	496.90
Barber County.....	Re-employment Office.....	1,071.64							196.36	1,071.64	196.36	1,268.00
Barber County.....	Decorate Courthouse.....	224.15						288.58	71.99	224.15	360.57	584.72
Barber County.....	Clearing Stream Channel.....	988.75	123.65				142.53		47.31	1,112.40	189.84	1,302.24
Total County Projects.....		\$ 10,715.90	\$ 8,135.86			\$ 1,380.80	\$ 849.47	\$ 838.71	\$ 1,774.46	\$ 18,851.76	\$ 4,843.44	\$ 23,695.20
State & Federal												
State.....	Roads—Drought Relief.....	\$ 14,568.40	\$ 18,544.08						\$ 7,607.43	\$ 33,412.48	\$ 7,607.43	\$ 41,019.91
State.....	Compensation.....	8.00							8.00			8.00
State.....	Sign Boards.....	144.90							215.20			215.20
Federal.....	Airports.....	232.80	16.50		819.67				1,069.97			1,069.97
Federal.....	Farm Mortgage & Land Value.....	397.00							397.00			397.00
Total State & Federal Projects.....		\$ 15,352.10	\$ 18,560.58		\$ 819.67	\$ 870.17	\$ 870.17		\$ 7,607.43	\$ 35,102.65	\$ 7,607.43	\$ 42,710.08
Grand Total.....		\$ 27,219.59	\$ 27,794.09		\$ 870.17	\$ 1,380.80	\$ 945.47	\$ 1,185.21	\$ 9,521.07	\$ 55,883.85	\$ 13,032.55	\$ 68,916.40

120

BARBER COUNTY

### IX—CIVIL WORKS ADMINISTRATION—EMPLOYMENT, MAN HOURS, AND WAGES FOR THE ENTIRE PERIOD, NOVEMBER 17, 1933, THROUGH JUNE 30, 1934

	Employment Data Covering Work Projects and Tool and Sundry Equipment Projects						Employment Data Covering Administrative Projects						Summary			Grand Total
	All Payrolls Covering Projects Employing Principally Labor			All Payrolls Covering Drivers of Their Own Teams, Trucks and Other Mechanical Equipment			Payrolls on Project Employing Chiefly Professional & Cler. Wk'rs			Payrolls for E'pl'ces of State & Local Administrative Proj.			Total Number Employees	Total Earnings, Wages, Salaries, and Hire	Accident Compensation	
	Average Weekly No. of Employees	Total Man Hours Worked	Total Wages Earned	Average Weekly No. of Employees	Total Man Hours Worked	Total Earnings Wage-Hire	Average Weekly No. of E'pl'ces	Salaries and Wages Earned	Average Weekly No. of Employees	Salaries and Wages Earned	Weekly Average	Total	Average Weekly Wage	Average Number Men	Total Amount	
Barber County																
Total 1933.....	146.0	22,170	\$ 8,881.83	66.2	11,464	\$ 8,149.09	0.5	\$ 45.75	6.7	\$ 423.37	219.4	\$ 17,500.04	\$ 13.30	...	\$ ....	
First 3 Mo. 1934.....	179.1	40,027	16,211.67	98.8	26,587	18,918.45	3.8	784.85	6.0	1,351.00	287.7	37,265.97	9.96	0.1	8.00	
Second 3 Mo. 1934.....							0.8	186.67	0.3	53.00	1.1	239.67	17.12	...	239.67	
Total.....	100.1	62,197	\$ 25,093.50	52.6	38,051	\$ 27,067.54	2.0	\$ 1,017.27	3.8	\$ 1,827.37	158.5	\$ 55,005.68	\$ 10.85	0.1	\$ 8.00	
															\$ 55,013.68	



### BARTON COUNTY

121

Board of County Commissioners—G. H. Ernating, Chairman, Ellinwood; F. A. Soderstrom, Hoisington; Will Werhahn, Great Bend.

County Emergency Relief Committee—C. M. Brack, Chairman, Great Bend; Ralph B. Call, Hoisington; F. A. Soderstrom, Hoisington; Will Werhahn, Great Bend.

County Poor Commissioner—B. H. Asher; County Case Supervisor—Dorothy Luginbill; Supervisor of Work Program—H. K. Shideler (December, 1934).

Assessed Valuation—\$37,986,396 (March 1, 1934); Bonded Indebtedness—\$86,500 (October 1, 1934); Population—19,786 (March, 1934); Total Population on Relief—1,977; Per Cent—8.5 (December, 1934).

#### EXPENDITURES FOR RELIEF AND CWA FROM ALL SOURCES, 1934\*

	Relief Program	CWA Program	Total
Total County Funds.....	\$ 38,577.82	\$ 2,490.10	\$ 41,067.92
Total Township Funds.....	776.08	2,205.77	2,981.85
Total School Funds.....	3,720.57	62.30	3,782.87
Total Privately Raised Funds.....	98.32	123.07	221.39
Total State Funds.....	46,459.75	66,834.02	113,293.77
Total Federal Funds.....	\$ 89,632.54	\$ 71,715.26	\$161,347.80

#### EXPENDITURES FOR RELIEF AND CWA FROM ALL SOURCES, 1924-1933\*

	Relief Program	CWA Program	Total
Total County Funds.....	\$310,881.35	\$.....	\$310,881.35
Total Private Funds.....	26,308.08	.....	26,308.08
Total City Funds.....	11,611.23	.....	11,611.23
Total Federal Funds.....	40,831.11	34,680.44	75,411.55
Total.....	\$389,631.77	\$ 34,680.44	\$424,212.21

\*Excludes All Non-relief Obligations Except Payrolls.

#### WORK RELIEF AND CWA, OCTOBER, 1932, THROUGH DECEMBER, 1934

Road, street, and general improvement projects operated in Barton county under the CWA and work relief programs between October, 1932, and the close of 1934. Approximately 75 miles of county and township roads and six miles of state highway were improved; 20 large culverts and bridges and 56 small culverts were constructed; streets in Great Bend, Hoisington, Pawnee Rock, and Ellinwood were repaired; and 1,700 feet of storm sewer and 2,300 feet of sanitary sewer were laid at Great Bend.

Park improvements consisted of work on the Pawnee Rock State Park where drives were built, the face of the rock cleaned, trees planted, terracing done, and a water system provided in the park. At Claflin walks were built in the city park and improvements were made on parks at Great Bend also. Cemeteries were improved at Ellinwood, Great Bend, and Claflin, and dump grounds were cleaned up at Ellinwood and Great Bend. An outstanding project provided for dike construction along the Arkansas river and Dry Walnut creek near Great Bend.

General repair work was done on the courthouse at Great Bend, the sewage disposal plant at Hoisington, a city hall and schoolhouses at Pawnee Rock and Ellinwood, a library, the county home at Great Bend, and an additional building was constructed on the high school grounds at Pawnee Rock.

Women's projects included the sewing rooms at Great Bend and Hoisington and an historic project which was begun to locate the old cattle and immigration trails and to compile and write a history of Barton county.

As water conservation measures seven emergency wells were dug, five farm ponds constructed, and an emergency pumping plant set up.

The average case load remained practically unchanged during 1934, according to county relief officials. Fluctuations in the monthly number receiving aid were frequent, however, owing to temporary employment given through harvest and some employment given by the railroad shops at Hoisington. Drought conditions put many persons back on the relief rolls who had been removed earlier in the year.

One of the outstanding accomplishments of the relief administration was the instruction given to clients which made it possible for them to work out their own budgets and, in many instances, to raise their standard of living by better utilization of resources, according to county relief officials.

### I—ANALYSIS OF ALL RELIEF GRANTED FROM FEDERAL, LOCAL PUBLIC, AND PRIVATE WELFARE AGENCY FUNDS—1934

ITEMS	RESIDENT FAMILIES				RESIDENT SINGLES				RESIDENT TOTAL		TRANSIENTS		GRAND TOTAL
	Aver. Mo. Cases	Aver. Mo. No. Persons Rept.	Amount	Aver. Relief Per Case	Aver. Mo. Cases	Amount	Aver. Relief Per Case	Aver. Mo. Cases	Amount	Aver. Relief Per Case	Actual No. Persons	Amount	All Relief Granted
<b>Section A—Work and Direct Relief</b>													
Approved Work Projects													
Federal Funds.....	158.6	720.5	\$ 30,375.35	\$ 15.96	4.5	\$ 639.30	\$ 11.84	163.1	\$ 31,014.65	\$ 15.85			\$ 31,014.65
County Funds.....													
Total.....	158.6	720.5	\$ 30,375.35	\$ 15.96	4.5	\$ 639.30	\$ 11.84	163.1	\$ 31,014.65	\$ 15.85			\$ 31,014.65
Additional County Projects.....											2	\$ 4.46	4.46
Total Work Relief.....	158.6	720.5	\$ 30,375.35	\$ 15.96	4.5	\$ 639.30	\$ 11.84	163.1	\$ 31,014.65	\$ 15.85	2	\$ 4.46	\$ 31,019.11
<b>Direct Relief</b>													
County Funds.....	129.3	599.0	\$ 12,164.29	\$ 7.84	22.8	\$ 1,666.73	\$ 6.11	152.1	\$ 13,831.02	\$ 7.58	31	\$ 31.49	\$ 13,862.51
Federal Funds.....													
Garden Seed*.....			186.00						186.00				186.00
Fuel Distribution.....			398.45						398.45				398.45
Total.....	129.3	599.0	\$ 12,748.74		22.8	\$ 1,666.73		152.1	\$ 14,415.47		31	\$ 31.49	\$ 14,446.96
Total Work & Direct Relief.....	287.9	1,319.5	\$ 43,124.09		27.3	\$ 2,306.03		315.2	\$ 45,430.12		33	\$ 35.95	\$ 45,466.07
Less Duplicated Cases.....	41.6	190.2			0.8			42.4					
Net Total, Section A.....	246.3	1,129.3	\$ 43,124.09		26.5	\$ 2,306.03		272.8	\$ 45,430.12		33	\$ 35.95	\$ 45,466.07
<b>Section B—Special Programs</b>													
Federal Grants in Aid.....													
Emergency Educ. Pro.†.....					3.0	\$ 441.00	\$ 73.50	3.0	\$ 441.00	\$ 73.50			\$ 441.00
College Student Pro.†.....													
Homestead Rehabilitation†.....													
Civil Works Service†.....					1.0	70.00	35.00	1.0	70.00	35.00			70.00
Total Section B.....					4.0	\$ 511.00		4.0	\$ 511.00				\$ 511.00
<b>Section C—Other Relief from County Funds</b>													
Poor Farm.....	11.7	11.7	\$ 5,796.10	\$ 41.40	24.8	\$ 5,447.75	\$ 18.28	24.8	\$ 5,447.75	\$ 18.28			\$ 5,447.75
Hospitalization.....	3.3	3.3	849.61	21.24				3.3	849.61	21.24			849.61
Other Institutions.....	1.0	1.0	240.00	20.00				1.0	240.00	20.00			240.00
Pensions.....	14.0	63.0	2,996.00	17.83				14.0	2,996.00	17.83			2,996.00
Mothers' Aid.....	3.6	3.6	2,009.82	46.74				3.6	2,009.82	46.74			2,009.82
Crippled Children.....	1.8	1.8	956.00	43.45				1.8	956.00	43.45			956.00
All Other (Burials, etc.).....													
Total Section C.....	35.4	84.4	\$ 12,847.53	\$ 30.24	24.8	\$ 5,447.75	\$ 18.28	60.2	\$ 18,295.28	\$ 25.33			\$ 18,295.28
<b>Section D—Relief from Private Agencies</b>													
Red Cross.....	103.8	436.7	\$ 3,150.57	\$ 2.53				103.8	\$ 3,150.57	\$ 2.53			\$ 3,150.57
Religious Organizations.....													
Fraternal Clubs.....													
Community Chest.....													
Associated Charities.....	10.9	49.2	150.00	1.15				10.9	150.00	1.15			150.00
Welfare Boards.....													
Salvation Army.....													
Parent-Teachers Assn.....													
Other Agencies.....													
Total Section D.....	114.7	485.8	\$ 3,300.57	\$ 2.40				114.7	\$ 3,300.57	\$ 2.40			\$ 3,300.57
<b>Section E—Relief from City Funds</b>													
Total Sections A to E, Incl.....			\$ 59,272.19			\$ 8,264.78			\$ 67,536.97			\$ 35.95	\$ 67,572.92
<b>Section F—Surp. Commodities—Est. Val.</b>													
Commodities Granted by†.....													
Fed. Surplus Relief Corp.....			\$ 4,897.18						\$ 4,897.18				\$ 4,897.18
Kansas Emer. Relief Com.....			3,404.90						3,404.90				3,404.90
Fuel Granted by†.....													
Fed. Surplus Relief Corp.....													
Total Section F.....			\$ 8,302.08						\$ 8,302.08				\$ 8,302.08
<b>Grand Total All Relief</b> .....			<b>\$ 67,574.27</b>			<b>\$ 8,264.78</b>			<b>\$ 75,839.05</b>			<b>\$ 35.95</b>	<b>\$ 75,875.00</b>

\*Cases Included in Schedule III. †Cases Included in Schedule VI. ‡Case Averages Based on Actual Number of Months Program Was in Operation.



### II—SUMMARY OF ALL OBLIGATIONS INCURRED FOR RELIEF AND THE WORK RELIEF PROGRAM FOR YEAR 1934 AND CIVIL WORKS ADMINISTRATION FROM NOVEMBER 17, 1933, THROUGH JUNE 30, 1934

Consolidated Statement of All Obligations for These Purposes Against Federal, State, Local Public, Private and Private Welfare Agency Funds

ITEMS	Federal Funds	County Funds	City Funds	Township Funds	School Funds	Private Funds	Total Funds	State Funds	Private Agy. Funds	Grand Total All Funds
<b>Section A</b>										
Work Relief—Wages on Approved Projects	\$ 31,014.65						\$ 31,014.65			\$ 31,014.65
<b>Section B</b>										
Non-Relief Obligations—Work Relief Pro.										
Materials										
Aggregate Materials & Stone	\$ 613.00	\$ 978.75	\$ 21.00		\$ 9.50		\$ 1,622.25			\$ 1,622.25
Cement	706.00	151.70			47.45	25.50	986.02			986.02
Bituminous Materials			14.62				14.62			14.62
Petroleum Products										
Iron & Steel	1,690.06		427.00				2,117.06	214.00		2,331.06
Clay Products			1,592.72				1,592.72			1,592.72
Lumber	90.00	18.50					108.50			108.50
Plumbing & Heating	14.85						14.85			14.85
Hardware										
Explosives										
Paint & Paint Materials		791.34					791.34			791.34
Total Materials	\$ 3,113.91	\$ 1,940.29	\$ 2,110.71		\$ 56.95	\$ 25.50	\$ 7,247.36	\$ 214.00		\$ 7,461.36
Team, Truck, & Equipment Expense										
Equipment Parts & Supplies	\$ 491.74						\$ 491.74			\$ 491.74
Office Supplies & Equipment		398.13					398.13			398.13
Rental of Equipment	239.00	4,029.74	233.45			240.00	4,742.19	98.25		4,840.44
Total Team, Truck, & Equip. Exp.	\$ 730.74	\$ 4,427.87	\$ 233.45			\$ 240.00	\$ 5,632.06	\$ 98.25		\$ 5,730.31
Other Costs										
Tools										
Rental of Premises										
Other Services	512.24	932.00					1,444.24			1,444.24
Other Charges										
Miscellaneous	103.75	38.35				93.97	236.07			236.07
Total Other Costs	\$ 615.99	\$ 970.35				\$ 93.97	\$ 1,680.31			\$ 1,680.31
Wages & Salaries	\$ 6,047.57	\$ 5,770.95	\$ 776.08			\$ 120.00	\$ 12,714.60	\$ 98.32		\$ 12,812.92
Total Non-Relief Obligations	\$ 10,508.21	\$ 13,109.46	\$ 3,120.24		\$ 56.95	\$ 479.47	\$ 27,274.33	\$ 410.57		\$ 27,684.90
Total Sections A & B	\$ 41,522.86	\$ 13,109.46	\$ 3,120.24		\$ 56.95	\$ 479.47	\$ 58,288.98	\$ 410.57		\$ 58,699.55
<b>Section C</b>										
Additional County Work Relief		4.46					4.46			4.46
Direct Relief	584.45	13,862.51					14,446.96			14,446.96
Admin. Costs Prior to Admin. Projects										
Wages & Salaries		644.62					644.62			644.62
Other Costs		451.17					451.17			451.17
Total	\$	\$ 1,095.79					\$ 1,095.79			\$ 1,095.79
Total Section C	\$ 584.45	\$ 14,962.76					\$ 15,547.21			\$ 15,547.21
<b>Section D</b>										
Relief from Special Programs	\$ 511.00						\$ 511.00			\$ 511.00
Other Relief from County Funds		18,295.28					18,295.28			18,295.28
Other Relief from City Funds										
Relief from Private Welfare Agency Funds										
Surplus Commodities & Fuel—Est. Value	8,302.08						8,302.08	3,300.57		3,300.57
Supplemental Administrative Salaries									300.00	300.00
Total Section D	\$ 8,813.08	\$ 18,295.28					\$ 27,108.36		\$ 3,600.57	\$ 30,708.93
Grand Total Sections A to D, Incl.	\$ 50,920.39	\$ 46,367.59	\$ 3,120.24		\$ 56.95	\$ 479.47	\$ 100,944.55	\$ 410.57	\$ 3,600.57	\$ 104,955.69
<b>Section E</b>										
Civil Works Administration										
Work Projects										
Payrolls	\$ 98,898.35	\$ 2,486.10	\$ 2,205.77			\$ 62.30	\$ 103,652.52	\$ 123.07		\$ 103,775.59
Other Costs	525.62	3,314.07	3,812.05		397.49	93.16	8,142.39	849.85		8,992.24
Total	\$ 99,423.97	\$ 5,800.17	\$ 6,017.82		\$ 397.49	\$ 155.46	\$ 111,794.91	\$ 972.92		\$ 112,767.83
Administration										
Payrolls	\$ 2,516.11	\$ 4.00					\$ 2,520.11			\$ 2,520.11
Other Costs		261.75					261.75			261.75
Total	\$ 2,516.11	\$ 265.75					\$ 2,781.86			\$ 2,781.86
Total Civil Works Administration	\$ 101,940.08	\$ 6,065.92	\$ 6,017.82		\$ 397.49	\$ 155.46	\$ 114,576.77	\$ 972.92		\$ 115,549.69
Grand Total	\$ 152,860.47	\$ 52,433.42	\$ 9,138.06		\$ 454.44	\$ 634.93	\$ 215,521.32	\$ 1,383.49	\$ 3,600.57	\$ 220,505.38

### III—MONTHLY RECORD OF RESIDENT CASES SHOWING APPLICATIONS RECEIVED, CASES OPENED, ACTIVE AND INACTIVE CASES, AND CASES CLOSED FOR YEAR 1934

	Cases at Beginning of Mo.	Applications Rec'd	Total Cases Opened	New Cases Opened	Old Cases Re-Opened	Total Mo. Case Load	Cases Rec'd Relief	*Cases Homest'd Rehab. Project	Cases Received No Relief	Total Cases Closed	Cases Closed Because Employ't	Cases Closed Other Reasons	Cases Open End of Mo.	Cases Active End of Month	Cases Inactive End of Month
January	77	79	79	36	43	156	156	...	...	34	26	8	122	122	...
February	122	23	23	13	10	145	145	...	...	13	6	7	132	132	...
March	132	55	55	12	43	187	187	...	...	16	3	13	171	171	...
April	171	368	162	13	149	333	283	...	50	25	21	4	308	283	25
May	308	55	50	10	40	358	332	...	26	49	39	10	309	309	...
June	309	16	6	4	2	315	247	...	68	57	51	6	258	247	11
July	258	43	43	15	28	301	271	...	30	30	27	3	271	271	...
August	271	41	25	11	14	296	294	...	2	2	1	1	294	294	...
September	294	57	40	22	18	334	317	...	17	17	14	3	317	317	...
October	317	53	35	23	12	352	316	...	36	36	28	8	316	316	...
November	316	82	47	29	18	363	359	...	4	4	3	1	359	359	...
December	359	30	31	11	20	390	365	...	25	25	18	7	365	365	...

\*Included in Cases Receiving Relief.

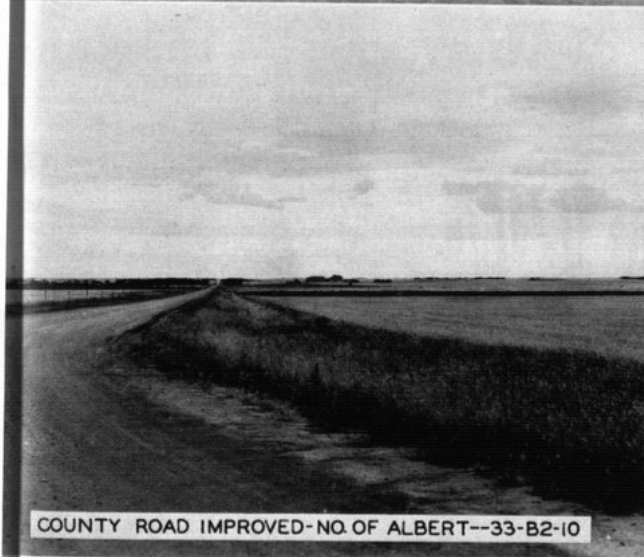
## BARTON COUNTY



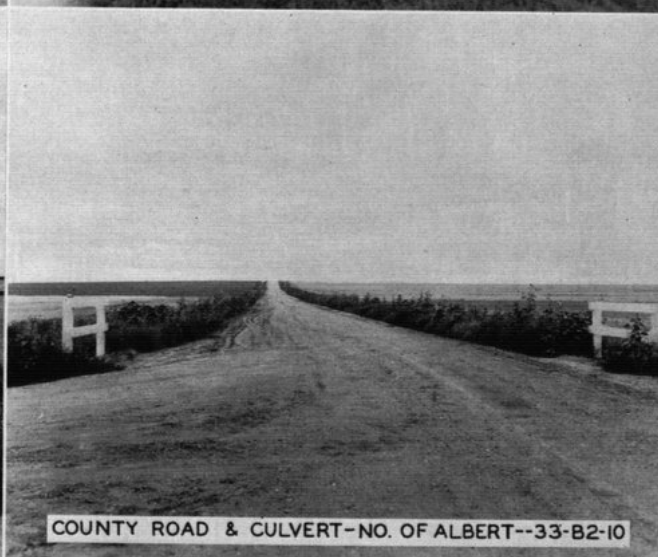
STREET IMPROVED-HOISINGTON--33-B2-9



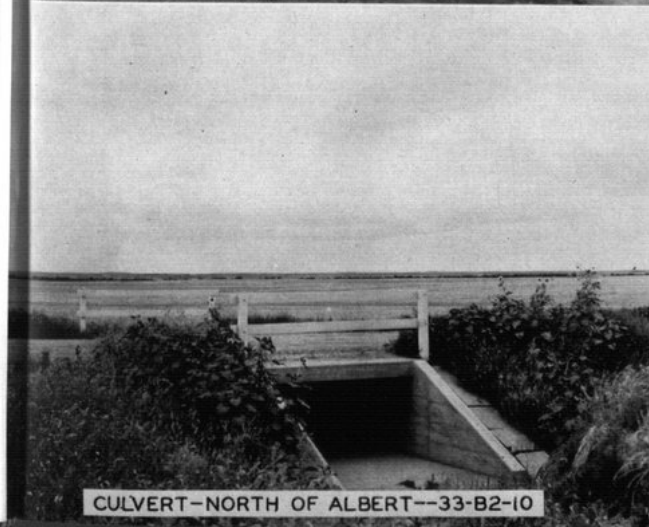
SHELTERHOUSE-GREAT BEND CITY PARK--33-B12-13



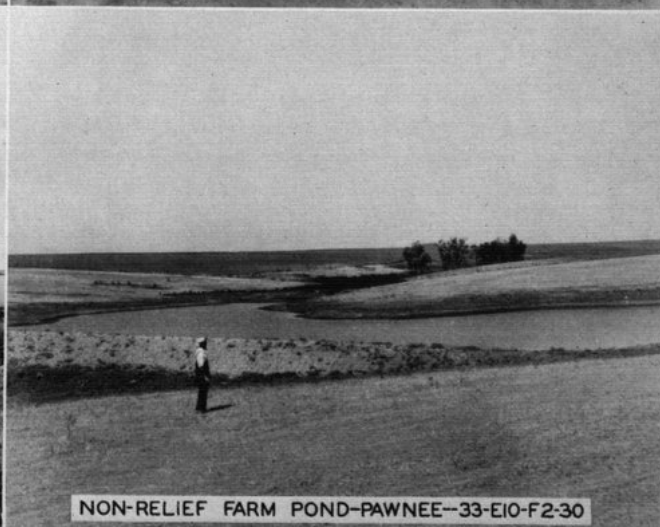
COUNTY ROAD IMPROVED-NO. OF ALBERT--33-B2-10



COUNTY ROAD & CULVERT-NO. OF ALBERT--33-B2-10



CULVERT-NORTH OF ALBERT--33-B2-10



NON-RELIEF FARM POND-PAWNEE--33-E10-F2-30