

## William Avery for Governor

A 1964 campaign brochure that features William Avery's image and the slogan "AHEAD WITH AVERY-REPUBLICAN GOVERNOR". Additional information is provided about Avery's family life, voting record in Congress, and the real issues that concerned Kansans in the 1960s.

Date: 1964

Callnumber: K329.6 1964

KSHS Identifier: DaRT ID: 211971

Item Identifier: 211971

[www.kansasmemory.org/item/211971](http://www.kansasmemory.org/item/211971)



## William Avery for Governor



William H. "Bill" Avery is shown at the right and Mrs. Avery at the left of this recent family portrait. Standing in the

Wm. H. "Bill"  
**AVERY**

middle rear are Mr. and Mrs. William H. Avery II. Seated, left to right, are Barbara, 17; Brad, 13 and Martha, 11.

### *AVERY—Congressman / Farmer-Stockman*

William H. Avery gains his understanding of Kansas problems from the dual experience of Congressman and farmer. Son of a former State Senator, Avery was born and received his early education in Wakefield, Kansas, and completed his education at the University of Kansas in 1934 with a major in political science. He married Hazel Bowles of Junction City, a school teacher, and they have four children. The family includes William H. II, 22; Barbara, 17; Brad, 13 and Martha, 11.

Avery is a livestock farmer near Wakefield and served on the Wakefield school board. He entered public life as a member of the Kansas House of Representatives in 1951, served two terms, and was selected for the Legislative Council . . . a between-session legislative guidance body. In 1954, he was elected to Congress, and now is serving his fifth term.

As a member of Congress, Avery was elected to serve on the influential House Rules Committee and the Select Committee on Small Business. Prior to his selection to serve on the Rules Committee he served on the Veterans Affairs Committee and the Interstate and Foreign Commerce Committee.

Avery is a member of the Methodist Church, Masonic Lodge, Kansas Farm Bureau, Kansas Livestock Assn., Kansas Association for Wildlife, Lions Club and Delta Upsilon social fraternity.

### *AVERY'S Congressional Voting Record*

**Supported** National Defense Education Act of 1958, which authorized approximately \$900 million for seven-year aid to education program. Passed.

**Supported** changes in social security liberalizing both eligibility and benefits, permitting early retirement and increasing widow's benefits. Passed.

**Supported** farm price support bill, passed in 1955.

**Supported** Labor-Management Reporting and Disclosure Act of 1959, curbing secondary boycotts, organizational and recognition picketing, giving states power to handle "no man's land" labor disputes. Passed.

**Opposed** passage of School Construction Act (Federal Aid to Education). Measure killed in 1956.

**Supported** amendment to Natural Gas Act to exempt producers from public utility regulation by Federal Power Commission. Passed.

**Supported** measure providing no act of Congress shall nullify state law unless Congress specifies, or an irreconcilable conflict exists. Passed.

**Supported** amendment to \$250-million Atomic Energy Act which prohibited AEC from contracting with a public utility for construction of generating plant and sale of by-product steam by AEC. Motion carried.

**Supported** resolution disapproving Kennedy's Urban Affairs and Housing department. Resolution carried.

**AHEAD WITH AVERY—REPUBLICAN**



## William Avery for Governor

### THESE ARE THE REAL ISSUES IN KANSAS



#### ECONOMIC DEVELOPMENT

My objective as your Governor would be a job opportunity in Kansas for every Kansas boy and girl. We can accomplish this through accelerated growth in the industrial complex of Kansas. I pledge full personal attention to our goal of new industry for Kansas and continuing efforts to help existing industry grow as well as attract new industry to our state.



#### EDUCATION

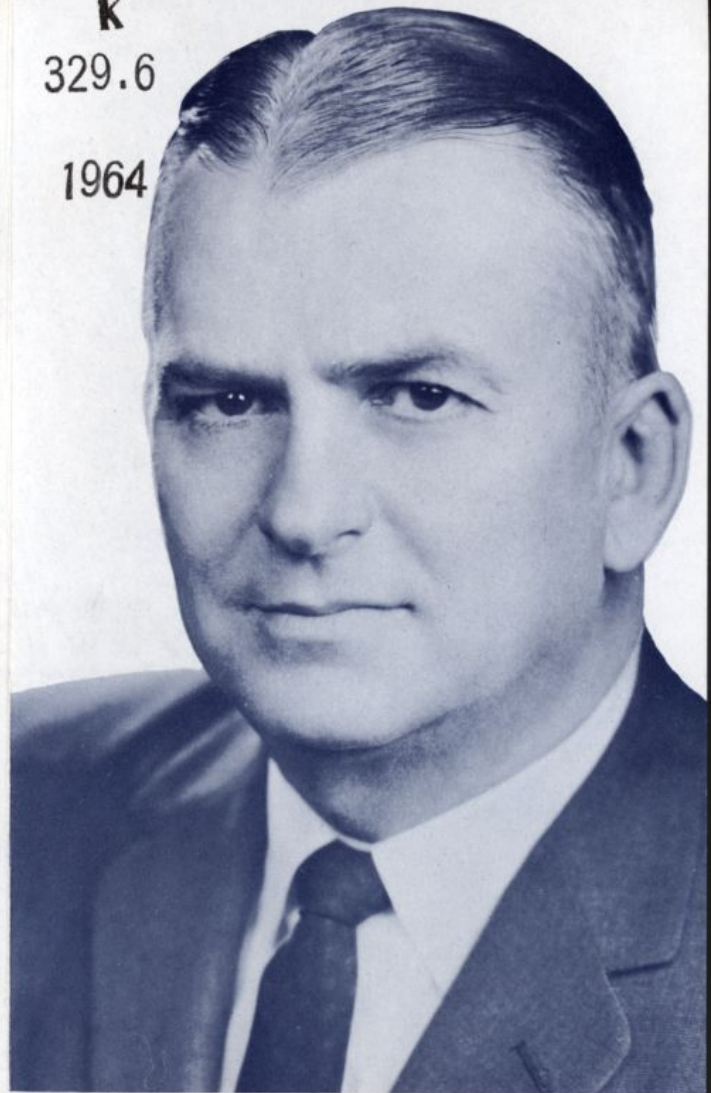
Failure to meet the cost of educating our increasing school population is an invitation to the Federal government to assume control of our public school system. Rising expenses cannot be met alone by the already over-burdened property tax. I believe we should set as our immediate goal the achievement of 40% state support of our public elementary and secondary schools.



#### AGRICULTURE

Kansas is one of the nation's leading states in agricultural production. We must preserve and expand the opportunities that have made this possible. The family farm will continue to be the cornerstone for Kansas agriculture and a training ground for high moral principles and adjustment to technical progress. I will continue my effort to promote research to find new industrial uses for our agricultural commodities.

K  
329.6  
1964



AHEAD WITH  
**AVERY**

REPUBLICAN

**GOVERNOR**



*I will sincerely appreciate your  
vote and support*

*Bill Avery*

**EXPERIENCE COUNTS!**