

Reports of the Kansas State Board of Agriculture

Section 5, Pages 121 - 150

These reports by the State Board of Agriculture include the proceedings of the board, reports for the previous year, maps of counties, abstracts of counties, miscellaneous articles, and reports of agricultural societies, the state fair, state and county statistics, agricultural industries and products, the agricultural college, and the Kansas Academy of Science. The annual reports began in 1872 and were succeeded by biennial reports beginning in 1877-78. Volume numbers were discontinued with the 1953-1956 report; the last being volume 44. From 1953 to 1976 the reports drop "biennial" from the title. Annual reports begin again from 1976 to 1984, except 1982-1983 which is biennial. The dates for each report reflects the reporting year and not the publication date, which was usually a year later. The title of each report reflects the form given on the title page. Only volumes 1 (1872), 2 (1873), 3 (1874), 4 (1875), the centennial edition (1875), 5 (1876), 6 (1877-1878), 7 (1879-1880), 10 (1885-1886), 11 (1887-1888), 13 (1891-1892), and 14 (1893-1894) are currently available.

Creator: Kansas State Board of Agriculture

Date: Bulk 1872-1984

Callnumber: SP 630.6 K13

KSHS Identifier: DaRT ID: 210899

Item Identifier: 210899

www.kansasmemory.org/item/210899

KANSAS
HISTORICAL
SOCIETY

Reports of the Kansas State Board of Agriculture

STATE BOARD OF AGRICULTURE.

119

James O'Neil, North Lawrence, Kansas, buck of any age.
do do do do buck of any age.
R. J. Stephenson, Newbury, Kansas, ewe of any age.
V. Brown, Medina, Kansas, ewe of any age.
Towne, Culp & Company, Clarence, Missouri, ewe of any age.
Charles Stone, Peabody, Kansas, ewe of any age.
do do do do ewe of any age.

AWARDS.

LOT 23—SWEEPSTAKES.

Towne, Culp & Co., Clarence, Missouri, best buck of any age.....Diploma and \$15 00
R. J. Stevenson, Newbury, Kansas, best ewe of any age.....Diploma and 15 00

O. A. BEEBE,
T. SAMPSON,
GEORGE T. MCGILL,
Awarding Committee.

CLASS D—SWINE.

MARTIN ANDERSON.....SUPERINTENDENT.

ENTRIES.

LOT 24—POLAND-CHINA, CHESTER WHITES, AND OTHER LARGE BREEDS.

Thomas White, Topeka, Kansas, boar one year old.
John McFarland, Wabaunsee, Kansas, boar over one year old. "Abe."
Edmund H. Harrop, North Topeka, Kansas, boar over one year old.
George H. Pierson, Windsor, Missouri, boar over one year old.
J. Q. Ayers, Moweaqua, Ill., boar over one year old.
do do boar over one year old.
do do boar over one year old.
do do boar over one year old.

Reports of the Kansas State Board of Agriculture

120

TRANSACTIONS OF THE

E. M. Bartholemew, Mound City, Kansas, boar over one year old.
do do do do boar over one year old.
T. T. Smith, Independence, Missouri, boar over one year old.
J. M. Bryant, Independence, Missouri, boar over one year old.
Thomas White, Topeka, boar under one year old.
Samuel Wolgamot, Ottawa, Kansas, boar under one year old. "Sir Ottawa."
Edmund H. Harrop, Topeka, Kansas, boar under one year old.
James W. Curry & Son, North Topeka, boar under one year old, "Sampson."
A. A. Ripley, Topeka, boar under one year old.
George H. Pierson, Windsor, Missouri, boar under one year old.
do do do do boar under one year old.
do do do do boar under one year old.
J. S. McCreary, Canton, Illinois, boar under one year old.
J. Q. Ayers, Moweaqua, Illinois, boar under one year old.
do do do do do do do do
do do do do do do do do
E. M. Bartholemew, Mound City, Kansas, boar under one year old.
T. E. Pearce, Gardner, Kansas, boar under one year old.
N. E. Bartholemew, Mound City, Kansas, boar under one year old.
B. F. Golden, Topeka, boar under one year old.
T. T. Smith, Independence, Missouri, boar under one year old.
do do do do do do
J. M. Bryant, do do do do do do
Thomas White, Topeka, sow over one year old.
John McFarland, Wabaunsee, Kansas, sow over one year old.
A. A. Ripley, Topeka, do do do do
J. Q. Ayers, Moweaqua, Illinois, do do do
do do do do do do do
J. S. McCreary, Canton, Illinois, do do do
do do do do do do do
E. M. Bartholemew, Mound City, Kansas, do do do
N. E. Bartholemew, do do do do do do
T. E. Pearce, Gardner, Kansas, do do do
do do do do do do do
B. F. Golden, Topeka, do do do do
do do do do do do do
T. T. Smith, Independence, Missouri, do do do
Samuel Wolgamot, Ottawa, Kansas, sow under one year old, "Lady Bismarck."
E. H. Harrop, Topeka, do do do do
George H. Pierson, Windsor, Mo., do do do
do do do do do do do
do do do do do do do
J. S. McCreary, Canton, Illinois, do do do
J. Q. Ayers, Moweaqua, do do do do
do do do do do do do
do do do do do do do
do do do do do do do
E. M. Bartholemew, Mound City, Kansas, sow under one year old.
do do do do do do do do
B. F. Golden, Topeka, sow under one year old.
T. E. Pearce, Gardner, Kansas, sow under one year old.
do do do do do do do do
T. T. Smith, Independence, Missouri, sow under one year old.
do do do do do do do do
J. M. Bryant, do do do do do do
Thomas White, Topeka, lot of pigs under six months old, (not less than six,) shown with sire and dam.
Samuel Wolgamot, Ottawa, Kansas, lot of pigs under six months old, (not less than six) shown with sire and dam.
John McFarland, Wabaunsee, Kansas, lot of pigs under six months old, (not less than six,) shown with sire and dam.
E. H. Harrop, Topeka, lot of pigs under six months old, (not less than six,) shown with sire and dam.
James W. Curry & Son, North Topeka, Kansas, lot of pigs under six months old, (not less than six,) shown with sire and dam.

Reports of the Kansas State Board of Agriculture

STATE BOARD OF AGRICULTURE.

121

- J. S. McCreary, Canton, Illinois, lot of pigs under six months old, (no less than six,) shown with sire and dam.
 E. M. Bartholomew, Mound City, Kansas, lot of pigs under six months old, (not less than six,) shown with sire and dam.
 B. F. Golden, Topeka, Kansas, lot of pigs under six months old, (not less than six,) shown with sire and dam.
 T. T. Smith, Independence, Missouri, lot of pigs under six months old, (not less than six,) shown with sire and dam.
 J. Q. Ayers, Moweaqua, Illinois, lot of pigs under six months old, (not less than six,) shown with sire and dam.
 J. Q. Ayers, Moweaqua, Illinois, lot of pigs under six months old, (not less than six,) shown with sire and dam.

AWARDS.

LOT 24—POLAND-CHINA, CHESTER WHITE, AND OTHER LARGE BREEDS.

George H. Pierson, Windsor, Missouri, boar one year old and over, first premium.....	\$ 25 00
J. S. McCreary, Canton, Illinois, second premium.....	15 00
T. T. Smith, Independence, Missouri, boar under one year old, first premium.....	15 00
E. H. Harrop, North Topeka, second premium.....	10 00
J. S. McCreary, Canton, Illinois, sow over one year old, first premium.....	20 00
N. E. Bartholomew, Mound City, Kansas, second premium.....	10 00
George H. Pierson, Windsor, Missouri, sow under one year old, first premium.....	10 00
T. T. Smith, Independence, Missouri, second premium.....	10 00
J. S. McCreary, Canton, Illinois, lot of pigs under six months old, (not less than six,) shown with sire and dam, first premium.....	25 00

O. H. MACAULEY,
N. O. P. WOOD,
M. J. ALKIRE,

Awarding Committee.

I do not concur in the award to E. H. Harrop, of second premium on boar under one year old.

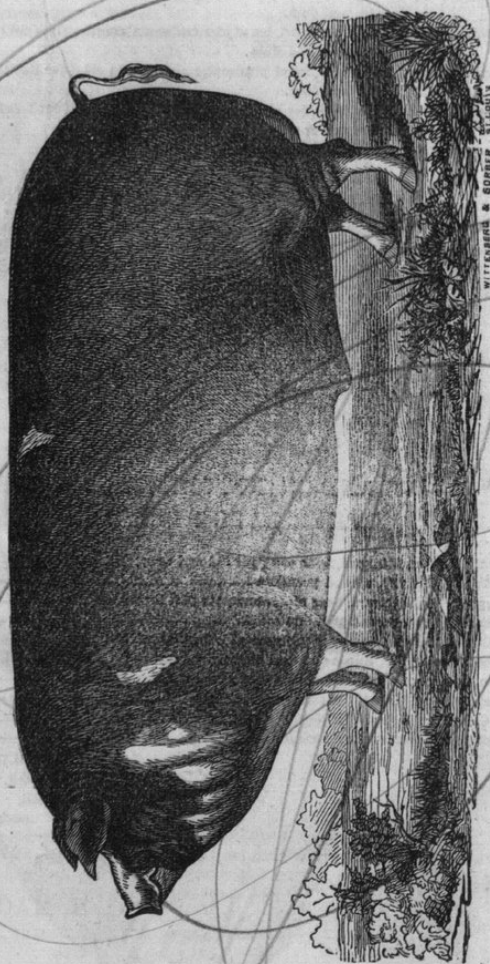
O. H. MACAULEY.

(The premium for the "Best lot of pigs under six months old, (not less than six,) shown with sire and dam," was awarded by the Committee to Thomas A. White, of Topeka, but was set aside by the Executive Committee for non-compliance with the rule requiring sire and dam to be shown with the pigs. The premium was subsequently awarded to J. S. McCreary, of Canton, Illinois.

SECRETARY.)

122

TRANSACTIONS OF THE

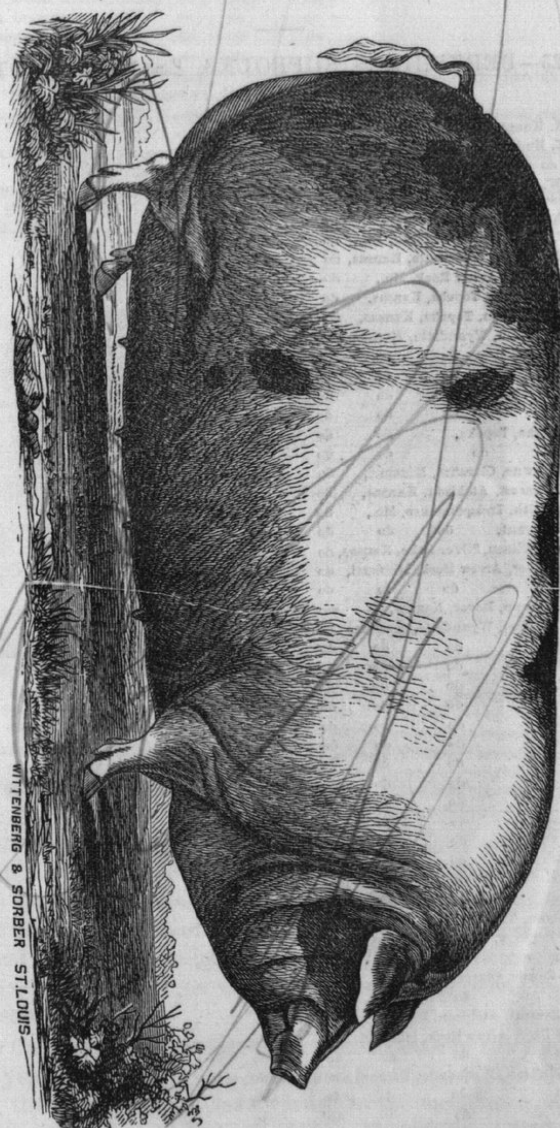


"BISMARCK."

(The property of J. S. McCreary, Canton, Illinois.)

STATE BOARD OF AGRICULTURE.

123



"LADY BISMARCK."

(The property of J. S. McCreary, Canton, Illinois.)

Reports of the Kansas State Board of Agriculture

124

TRANSACTIONS OF THE

ENTRIES.

LOT 25—BERKSHIRES, SUFFOLKS, ESSEX AND OTHER SMALL BREEDS.

L. A. Knapp, Dover, Kansas, boar over one year.				
J. K. Hudson, Wyandotte, Kansas, boar over one year.				
do do do do do				
L. W. Towne, Clarence, Missouri, do	do	do	do	do
do do do do do				
A. Palmer, Topeka, Kansas, do	do	do	do	do
J. M. Bryant, Independence, Mo., do	do	do	do	do
J. K. Hudson, Wyandotte, Kansas, do	do	do	do	do
Henry Deer, Arrow Rock, Mo., do	do	do	do	do
W. P. Popenoe, Topeka, Kansas, do	do	do	do	do
Andrew Wilson, Topeka, Kansas, do	do	do	do	do
J. K. Hudson, Wyandotte, Kansas, boar under one year.				
do do do do do				
do do do do do				
do do do do do				
do do do do do				
A. J. Ryan, Topeka, do	do	do	do	do
do do do do do				
L. W. Towne, Clarence, Missouri, do	do	do	do	do
R. R. Everest, Atchison, Kansas, do	do	do	do	do
T. T. Smith, Independence, Mo., do	do	do	do	do
J. M. Bryant, do do do do do				
Andrew Wilson, Silver Lake, Kansas, do	do	do	do	do
Henry Deer, Arrow Rock, Missouri, do	do	do	do	do
do do do do do				
L. W. Knapp, Dover, Kansas, sow over one year.				
J. K. Hudson, Wyandotte, Kansas, do	do	do	do	do
do do do do do				
do do do do do				
do do do do do				
do do do do do				
do do do do do				
do do do do do				
do do do do do				
do do do do do				
do do do do do				
do do do do do				
do do do do do				
do do do do do				
do do do do do				
A. J. Ryan, Topeka, do do do do do				
W. P. Popenoe, Topeka, do do do do do				
do do do do do				
L. W. Towne, Clarence, Missouri, do do do do do				
do do do do do				
R. R. Everest, Atchison, Kansas, do do do do do				
Henry Deer, Arrow Rock, Missouri, do do do do do				
do do do do do				
J. K. Hudson, Wyandotte, Kansas, sow under one year.				
do do do do do				
do do do do do				
do do do do do				
A. J. Ryan, Topeka, do do do do do				
W. P. Popenoe, Topeka, do do do do do				
R. R. Everest, Atchison, do do do do do				

Reports of the Kansas State Board of Agriculture

STATE BOARD OF AGRICULTURE.

125

L. W. Towne, Clarence, Missouri, sow under one year.	
do do do do do	
T. T. Smith, Independence, do do do	
J. M. Bryant, do do do do	
Henry Deer, Arrow Rock, do do do	
do do do do do	
J. K. Hudson, Wyandotte, Kansas, lot of pigs under six months, not less than six, shown with sire and dam.	
J. K. Hudson, Wyandotte, Kansas, lot of pigs under six months, not less than six, shown with sire and dam.	
A. J. Ryan, Topeka, Kansas, lot of pigs under six months, not less than six, shown with sire and dam.	
W. P. Popenoe, Topeka, Kansas, lot of pigs under six months, not less than six, shown with sire and dam.	
L. W. Towne, Clarence, Missouri, lot of pigs under six months, not less than six, shown with sire and dam.	

AWARDS.

LOT 25—BERKSHIRES, SUFFOLKS, ESSEX AND OTHER SMALL BREEDS.

J. M. Bryant, Independence, Missouri, boar over one year old, first premium.....	\$25 00
J. K. Hudson, Wyandotte, Kansas, second premium.....	15 00
H. Deer, Arrow Rock, Missouri, boar under one year old, first premium.....	15 00
R. R. Everest, Atchison, Kansas, second premium.....	10 00
L. W. Towne, Clarence, Missouri, sow over one year old, first premium.....	20 00
J. K. Hudson, Wyandotte, Kansas, second premium.....	10 00
T. T. Smith, Independence, Missouri, sow under one year old, first premium.....	10 00
R. R. Everest, Atchison, Kansas, second premium.....	10 00
L. W. Towne, Clarence, Missouri, lot of pigs under six months old, not less than six, shown with sire and dam, first premium.....	25 00

In the entries of "best boar, over one year old," your Committee had great difficulty in determining the entries of greatest excellence among so many that were noticeably meritorious. In general terms, purity of blood, fineness of texture, absence of grossness and waste matter, and power to reproduce their own qualities, (determined as far as possible from offspring on the ground,) were the points upon which awards were made.

Your Committee found their most difficult task in the ring of "sow over one year old." After long and careful examination, and repeated balloting, the first premium was awarded to the entry of L. W. Towne, and the second to that of J. K. Hudson. Five other entries were so uniformly excellent in character, that a decision based upon individual excellence was almost impossible, while none of the other eighteen en-

Reports of the Kansas State Board of Agriculture

126

TRANSACTIONS OF THE

tries were without great merit, and it was with regret that your Committee found themselves obliged to pass them without awards.

W. A. SNYDER,
G. H. MACAULEY,
FRED. E. MILLER,
Awarding Committee.

ENTRIES.

LOT 26—SWEEPSTAKES.

Thomas White, Topeka, boar of any age or breed.				
J. K. Hudson, Wyandotte, Kansas, boar of any age or breed.				
do do do do do do				
John McFarland, Wabaunsee, Kansas, boar of any age or breed.				
W. C. Popenoe, Topeka, do do do "Western Chief."				
James W. Curry & Son, North Topeka, do do do "Young Sampson."				
do do do do do do "Sampson."				
J. S. McCreary, Canton, Illinois, do do do				
do do do do do do				
do do do do do do				
George H. Pierson, Windsor, Missouri, do do do				
do do do do do do				
do do do do do do				
J. Q. Ayers, Moweaqua, Illinois, do do do				
do do do do do do				
R. R. Everest, Atchison, Kansas, do do do				
T. T. Smith, Independence, Missouri, do do do				
N. E. Bartholomew, Mound City, Kansas, do do do				
do do do do do do				
J. M. Bryant, Independence, Missouri, do do do				
J. K. Hudson, Wyandotte, Kansas, do do do				
Andrew Wilson, Silver Lake, do do do do				
J. K. Hudson, Wyandotte, do do do do				
Henry Deer, Arrow Rock, Missouri, do do do				
do do do do do do				
do do do do do do				
L. W. Towne, Clarence, Missouri, do do do				
do do do do do do				
Thomas White, Topeka, sow of any age or breed.				
J. K. Hudson, Wyandotte, Kansas, sow of any age or breed.				
do do do do do do				
do do do do do do				
do do do do do do				
do do do do do do				
John McFarland, Wabaunsee, Kas., do do do				
A. J. Ryan, Topeka, do do do do				
W. P. Popenoe, Topeka, do do do do				
do do do do do do				
L. W. Towne, Clarence, Missouri, do do do				
do do do do do do				
George H. Pierson, Windsor, Mo., do do do				
do do do do do do				
do do do do do do				

Reports of the Kansas State Board of Agriculture

STATE BOARD OF AGRICULTURE.

127

J. Q. Ayres, Moweaqua, Illinois, sow of any age or breed.
do do do do do do do
R. R. Everest, Atchison, Kansas, do do do
do do do do do do do
T. T. Smith, Independence, Mo., do do do
J. M. Bryant, do do boar do do
N. E. Bartholomew, Mound City, Kansas, boar of any age or breed.
do do do do do do do
do do do do do do do
do do do do do do do
Henry Deer, Arrow Rock, Missouri, do do do
do do do do do do do
do do do do do do do
do do do do do do do
T. E. Pierce, Gardner, Kansas, do do do
S. Wolgamot, Ottawa, do do do do
Thomas White, Topeka, lot of pigs under six months old, not less than six, shown with sire and dam
J. K. Hudson, Wyandotte, Kansas, lot of pigs under six months old, not less than six, shown with sire and dam.
J. K. Hudson, Wyandotte, Kansas, lot of pigs under six months old, not less than six, shown with sire and dam.
A. J. Ryan, Topeka, lot of pigs under six months old, not less than six, shown with sire and dam.
E. H. Harrop, Topeka, lot of pigs under six months old, not less than six, shown with sire and dam.
James W. Curry & Son, North Topeka, lot of pigs under six months old, not less than six, shown with sire and dam.
L. W. Towne, Clarence, Missouri, lot of pigs under six months old, not less than six, shown with sire and dam.
J. S. McCreary, Canton, Illinois, lot of pigs under six months old, not less than six, shown with sire and dam.
J. Q. Ayres, Moweaqua, Illinois, lot of pigs under six months old, not less than six, shown with sire and dam.
J. Q. Ayres, Moweaqua, Illinois, lot of pigs under six months old, not less than six, shown with sire and dam.
T. T. Smith, Independence, Missouri, lot of pigs under six months old, not less than six, shown with sire and dam.
N. E. Bartholomew, Mound City, Kansas, lot of pigs under six months old, not less than six, shown with sire and dam.
John McFarland, Wabaussee, Kansas, lot of pigs under six months old, not less than six, shown with sire and dam.

AWARDS.

LOT 26—SWEEPSTAKES.

Henry Deer, Arrow Rock, Missouri, best boar of any age or breed.....Diploma and \$40 00
L. W. Towne, Clarence Missouri, best sow of any age or breed..... 40 00
J. S. McCreary, Canton, Illinois, best lot of pigs under six months, not less than six pigs, shown with sire and dam.....Diploma and 40 00

O. H. MACAULEY,
W. P. SNYDER,
MORRIS WALTON,
J. S. SAUNDERS,
G. W. WHITE,

Awarding Committee.

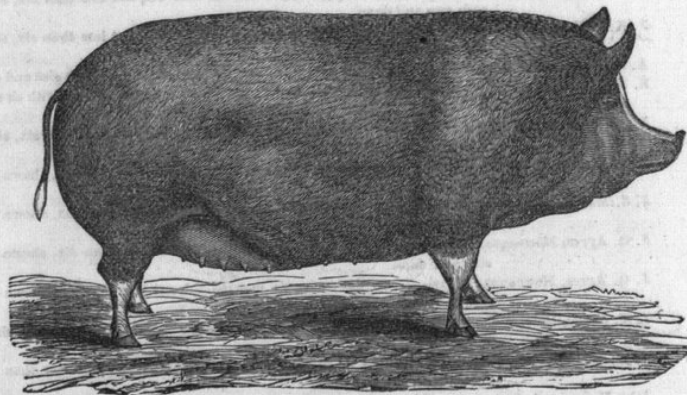
128

TRANSACTIONS OF THE
ENTRIES.

SPECIAL PREMIUM.

L. W. Towne, Clarence, Missouri, exhibition of thoroughbred hogs shown by the owner.
J. K. Hudson, Wyandott, Kansas, do do do do
J. Q. Ayers, Moweaqua, Illinois, do do do do
N. E. Bartholomew, Mound City, Kansas, exhibition of thoroughbred hogs shown by the owner.

AWARDS.



"LUDA REYNOLDS,"

Sired by "Prince of Wales;" dam, "English Maiden," imported by
S. H. Clay, of Kentucky, 1866. Now owned by J. K. Hudson.

J. K. Hudson, Wyandotte, Kansas, largest exhibition of thoroughbred hogs shown by
the owner..... Diploma and \$50 00

In their report, your Committee is pleased to notice the large and
excellent display of Berkshires, entered by J. K. Hudson, of Wyandotte.
To this entry the premium was awarded.

Without disparagement to other but smaller entries, the large num-
ber of truly meritorious animals shown by Mr. Hudson, displayed in a
marked degree, vigor of constitution and purity of blood, without that
overfeeding and grossness so common to animals prepared for exhibition.

O. H. MACAULEY,
W. P. SNYDER,
FRED E. MILLER,
Awarding Committee.

Reports of the Kansas State Board of Agriculture

STATE BOARD OF AGRICULTURE.

129

CLASS E—POULTRY.

JAMES I. LARIMER,.....SUPERINTENDENT.

ENTRIES.

LOT 27.

Mrs. W. P. Popenoe, Topeka, Kansas, pair of Cochín China fowls.

do	do	do	do	do	do
George H. Hughes,	do	do	do	do	do
McGill Bros., Tonganoxie,	do	do	do	do	do
do	do	do	do	do	do
do	do	do	do	do	do
do	do	do	do	do	do
do	do	do	do	do	do

Robert Jackson, Topeka, Kansas, pair of game fowls.

A. Ashbaugh,	do	do	do	do
S. Reed,	do	do	do	do
do	do	do	do	do
do	do	do	do	do
Allen Johnson,	do	do	do	do
Geo. W. Veale, Jr.,	do	do	do	do
W. P. Popenoe, Jr.,	do	do	do	do

McGill & Bro., Tonganoxie, Kansas, pair of Derkings.

do	do	do	do	do
do	do	do	do	do
do	do	do	do	do

Wm. E. Hood, Topeka, Kansas, pair of Poland fowls.

McGill & Bro., Tonganoxie, Kansas, pair of Poland fowls.

George H. Hughes, Topeka, Kansas, pair of Spanish fowls.

McGill & Bro., Tonganoxie, Kansas,	do	do
do	do	do
do	do	do
do	do	do

Mrs. W. P. Popenoe, Topeka, Kansas, pair of light Brahma fowls.

A. Ashbaugh,	do	do	do	do	do
D. P. Mitchell,	do	do	do	do	do
Miss Maggie Carter,	Peace,	do	do	do	do
A. Anderson,	North Lawrence,	do	do	do	do
J. S. White,	Lawrence,	do	do	do	do
George H. Hughes,	Topeka,	do	do	do	do
D. P. Mitchell,	do	do	do	do	do
McGill & Bro., Tonganoxie,	do	do	do	do	do
do	do	do	do	do	do
do	do	do	do	do	do
do	do	do	do	do	do

Reports of the Kansas State Board of Agriculture

130

TRANSACTIONS OF THE

Mrs. W. P. Popenoe, Topeka, pair of dark Brahma fowls.
A. B. McCabe, do do do do do
Mrs. Mary Scafour, Independence, Kansas, pair of dark Brahma fowls.
McGill & Bro., Tonganoxie, do do do
C. Holton, Rossville, do do do
McGill & Brother, Tonganoxie, Kansas, pair of Bolton Grays.
A. J. Ryan, Topeka, do do do do
McGill & Brother, Tonganoxie, pair of Dominiques.
do do do do do
T. B. Peterfish, Clinton, Missouri, pair of Dominiques.
A. Ashbaugh, Topeka, pair of Hondans.
McGill & Brother, Tonganoxie, Kansas, pair of Hondans.
do do do do do do
do do do do do do
Frankie Bonebrake, Topeka, pair of Bantams.
Mrs. E. Lewis, do do do
Eddie Crawford, do do do
McGill & Brother, Tonganoxie, Kansas, pair of Bantams.
Miss Maggie Carter, Peace, Kansas, pair of Silver Spangled Hamburg.
do do do do do do do
Addie Coddington, Topeka, do do do do do
Willie H. Johnson, Topeka, Kansas, pair of black Java fowls.
do do do pair of white Leghorn fowls.
George H. Hughes, do do do do do
McGill & Bro., Tonganoxie, Kansas, do do do
do do do do do do
do do do do do do
Eddie Crawford, Topeka, do do do do do
George H. Hughes, do do do any cross or breed.
T. B. Peterfish, Clinton, Kansas, do do do
McGill & Bro., Tonganoxie, Kansas, do do do
Miss Maggie Carter, Peace, do do do do
Mrs. W. P. Popenoe, Topeka, do do turkeys.
Henry Shattlo, do do do do
McGill & Bro., Tonganoxie, do do do
A. A. Ripley, Topeka, do do ducks.
W. P. Popenoe, do do do do
Henry Shattlo, do do do do
do do do do do
McGill & Bro., Tonganoxie, do do do do
do do do do do
do do do do do
do do do do do
F. A. Ripley, Topeka, pair of ducks.
W. P. Popenoe, Topeka, pair of geese.
McGill & Brother, Tonganoxie, Kansas, pair of geese.
W. P. Popenoe, Topeka, pair of Guinea fowls.
McGill & Brother, Tonganoxie, Kansas, pair of Guinea fowls.
Thomas Willits, Topeka, do do do do
McGill & Brother, Tonganoxie, do do peafowls.
George H. Hughes, Topeka, variety of pigeons.
W. P. Popenoe, Topeka, exhibition of poultry owned by one person
George H. Hughes, Topeka, do do do do do
Thomas Willits, do do do do do do
McGill & Brother, do do do do do do

Reports of the Kansas State Board of Agriculture

131

AWARDS.

LOT 27—POULTRY.

Mrs. W. P. Popenoe, Topeka, pair of Cochín China fowls, first premium.....	\$5 00
S. Reed, Topeka, pair of Game fowls, first premium.....	5 00
McGill & Brother, Tonganoxie, pair of Dorkings, first premium.....	5 00
do do do pair of Polands, first premium.....	5 00
George H. Hughes, Topeka, pair of Spanish, first premium.....	5 00
Mrs. W. P. Popenoe, Topeka, pair of light Brahmas, first premium.....	5 00
A. B. McCabe, Topeka, pair of dark Brahmas, first premium.....	5 00
McGill & Brother, Tonganoxie, Kansas, pair of Bolton Grays, first premium.....	5 00
do do do do do Dominiques, first premium.....	5 00
Frankie Bonebrake, Topeka, pair of Bantams, first premium.....	6 00
T. B. Peterfish, Clinton, Kansas, best pair of any cross or breed.....	5 00
Miss Maggie Carter, Peace, Kansas, pair of Silver-Spangled Hamburgs, special premium.....	5 00
McGill & Brother, Tonganoxie, Kansas, pair of turkeys, first premium.....	5 00
do do do do do ducks, first premium.....	5 00
do do do do do geese, first premium.....	5 00
W. P. Popenoe, Topeka, pair of Guinea fowls, first premium.....	2 00
McGill & Brother, Tonganoxie, Kansas, pair of Peafowls, first premium.....	5 00
George H. Hughes, Topeka, variety of pigeons, first premium.....	5 00
McGill & Brother, Tonganoxie, Kansas, best exhibition of poultry, first premium.....	10 00
do do do do do pair of Houdans, first premium.....	5 00
do do do do do pair of White Leghorns, first premium.....	Diploma
Willie H. Johnson, Topeka, pair of Black Javas, first premium.....	Diploma

A. JOHNSON,
O. F. DUNLAP,
B. T. WRIGHT,

Awarding Committee.

CLASS F—AGRICULTURAL IMPLEMENTS.

WILLIAM MARTINDALE.....SUPERINTENDENT.

ENTRIES.

LOT 28—PLOWS.

Wilder & Palm, Lawrence, Kansas, two-horse plow for general purposes, Kansas manufacture.								
do	do	do	do	do	do	do	do	do
do	do	do	do	do	do	do	do	do
do	do	do	do	do	do	do	do	do
do	do	do	do	do	do	sod or turf.		
do	do	do	do	do	do	do		
do	do	do	do	do	do	do		

Reports of the Kansas State Board of Agriculture

132

TRANSACTIONS OF THE

Deere, Mansur & Company, Kansas City, Missouri, two-horse plow for sod or turf.
 Barrett & Lukens, North Topeka, do do do
 B. F. Bush, St. Joseph, Missouri, do do do
 Samuel W. Roney, Junction City, Kansas, do do do
 Moline Plow Company, Kansas City, Missouri, do do do
 A. G. Bodwell, do do do do do do
 do do do do do do
 Samuel W. Roney, Junction City, Kansas, do do do
 A. G. Bodwell, Kansas City, Missouri, gang plow.
 do do do one-horse plow.
 do do do do do
 Moline Plow Company, Kansas City, Missouri, one-horse plow.
 Deere, Mansur & Company, do do do do
 do do do do do single shovel plow.
 Wilder & Palm, Lawrence, Kansas, do do do
 Moline Plow Company, Kansas City, Missouri, do do do
 A. G. Bodwell, Kansas City, Missouri, one-horse double or treble shovel plow.
 Deere, Mansur & Company, Kansas City, Missouri, one-horse double or treble shovel plow.
 Wilder & Palm, Lawrence, Kansas, double shovel plow
 do do do do trench plow.
 Deere, Mansur & Company, Kansas City, Missouri, subsoil plow.
 B. Wheeler, Burghill City, Missouri, subsoil plow.
 Deere, Mansur & Company, Kansas City, Missouri, two-horse plow for old ground.
 W. W. Campbell & Brother, Topeka, two-horse plow for old ground.
 B. T. Bush, St. Joseph, Missouri, do do do
 Moline Plow Company, Kansas City, Missouri, two-horse plow for old ground.
 Wilder & Palm, Lawrence, Kansas, two-horse plow for old ground.
 W. W. Campbell & Brother, Topeka, two or three-horse plow for old ground.
 Deere, Mansur & Company, Kansas City, Missouri, double walking corn plow.
 Deere, Mansur & Company, Kansas City, Missouri, do do do
 Moline Plow Company, Kansas City, Missouri, newly invented implement by which soil can be
 well broken up and thoroughly prepared for seeding, at less cost than by ordinary plowing.
 Wilder & Palm, Lawrence, Kansas, grub or railroad plow.
 Deere, Mansur & Company, Kansas City, Missouri, one-horse cultivator.
 Moline Plow Company, do do do do do
 Deere, Mansur & Company, Kansas City, Missouri, two-horse independent cultivator.
 Crawford, Gorham & Stone, Topeka, two-horse independent cultivator.
 do do do do do do
 Moline Plow Company, Kansas City, Missouri, two-horse independent cultivator.
 A. G. Bodwell, do do do do do
 Wier Plow Company, Monmouth, Illinois, do do do
 J. R. Ratkin, Shenandoah, Iowa, do do do
 Deere, Mansur & Company, Kansas City, Missouri, two-horse sulky cultivator.
 do do do do do two-horse cultivator with combination for
 seeding and planting.
 Deere, Mansur & Company, Kansas City, Missouri, grain drill.
 A. B. Perine, Topeka, Kansas, two-horse harrow.
 J. G. Hyatt, Garnett, " do do
 O. B. Caleord, Greenville, Illinois, field roller.
 J. A. Keeler, Olathe, Kansas, do do
 W. W. Campbell & Brother, Topeka, sulky hay rake.
 do do do do do
 Deere, Mansur & Company, Kansas City, Missouri, sulky hay rake.
 Crawford, Gorham & Stone, Topeka, do do
 Barrett & Lukens, North Topeka, do do
 Deere, Mansur & Company, Kansas City, Missouri, revolving horse rake.
 do do do do do spring-toothed horse rake.
 Crawford, Gorham & Stone, Topeka, do do do
 Crawford & Company, Topeka, do do do
 Barrett & Lukens, North Topeka, do do do
 Deere, Mansur & Company, Kansas City, Missouri, hand corn planter.
 do do do do do two-horse corn planter.
 Crawford, Gorham & Stone, Topeka, do do do
 I. E. Gorham, Topeka, two-horse corn planter.
 Barrett & Lukens, North Topeka, attachment to planter for dropping corn.

Reports of the Kansas State Board of Agriculture

STATE BOARD OF AGRICULTURE.

133

AWARDS.

LOT 28—PLOWS.

Wilder & Palm, Lawrence, Kansas, two-horse plow for general purposes, Kansas manu- facture, first premium.....	Certificate and \$25
Deere, Mansur & Company, Kansas City, Missouri, two-horse plow for sod or turf.....	Certificate.
A. G. Bodwell, Kansas City, Missouri, gang plow, first premium.....	do
Moline Plow Company, Kansas City, Missouri, one-horse plow, first premium.....	do
Wilder & Palm, Lawrence, Kansas, one-horse single shovel plow, first premium.....	do
A. G. Bodwell, Kansas City, Missouri, one-horse double shovel plow, first premium.....	do
Wilder & Palm, Lawrence, Kansas, trench plow, first premium.....	do
Deere, Mansur & Company, Kansas City, Missouri, subsoil plow, first premium.....	do
Moline Plow Company, do do two-horse plow for old ground, first premium,	do
Deere, Mansur & Company, do do double walking corn plow, first premium.....	do
do do do do do riding do do do	do
Wilder & Palm, Lawrence, Kansas, grubber or railroad plow, first premium.....	do
Moline Plow Company, Kansas City, Missouri, one-horse cultivator, first premium.....	do
Deere, Mansur & Company, Kansas City, Missouri, two-horse independent cultivator, first prem.	do
do do do do do do do do with com- bination for seeding and planting, first premium.....	do
Deere, Mansur & Company, Kansas City, Missouri, grain drill, first premium.....	do
J. G. Hiatt, Garnett, Kansas, two-horse harrow, first premium.....	do
J. A. Keeler, Olathe, Kansas, field roller, first premium.....	do
W. W. Campbell & Brother, Topeka, sulky hay rake, first premium.....	do
Deere, Mansur & Co., Kansas City, Missouri, revolving horse rake, first premium.....	do
do do do do do hand corn planter, first premium.....	do
Crawford, Gorham & Stone, Topeka, two-horse corn planter, first premium.....	do

A. G. LEWIS,
JOHN RITCHIE,
D. NUMAN, .

Awarding Committee.

ENTRIES.

LOT 29—THRESHING AND OTHER MACHINES.

W. W. Campbell & Brother, Topeka, mowing machine.	
Deere, Mansur & Co., Kansas City, Missouri, mowing machine.	
Crawford, Gorham & Stone, Topeka, Kansas,	do
do do do do do do	do
do do do do do do	do
D. M. Osborne & Co., St. Louis, Missouri,	do
S. K. Lighter, Topeka, Kansas,	do
J. S. Martin, Kansas City, Missouri,	do
J. E. Gorham, Topeka, Kansas,	do
W. W. Campbell & Brother, Topeka, Kansas, reaping machine.	
Deere, Mansur & Co., Kansas City, Missouri,	do
Crawford, Gorham & Stone, Topeka, Kansas,	do
do do do do do do	do
Marsh, Stewart & Co., Plano, Illinois,	do
W. W. Campbell & Brother, Topeka, Kansas, mower and reaper combined.	
J. S. Martin, Kansas City, Missouri,	do do do
Crawford, Gorham & Stone, Topeka, Kansas,	do do do
do do do do do do	do do do

Reports of the Kansas State Board of Agriculture

134

TRANSACTIONS OF THE

Deere, Mansur & Company, Kansas City, Missouri, mower and reaper combined.
do do do do do combined self-rake, reaper and mower.
J. N. Van Hosen, Lawrence, Kansas, do do do do
D. M. Osborne & Company, St. Louis, Missouri, do do do do
J. S. Martin, Kansas City, Missouri, do do do do
J. H. Evright, Topeka, Kansas, do do do do
C. E. Wright, St. Louis, Missouri, do do do do
W. W. Campbell & Brother, Topeka, do do do do
Deere, Mansur & Company, Kansas City, Missouri, fanning mill.
Deere, Mansur & Company, Kansas City, Missouri, cider mill.
do do do do do horse power corn sheller.
do do do do do hand do do
Wilder & Palm, Lawrence, railroad scraper.
Deere, Mansur & Company, Kansas City, Missouri, implement for cutting corn stalks and other
rubbish lying on the field, in suitable lengths, preparatory to plowing under.
W. W. Campbell & Brother, Topeka, implement for cutting corn stalks and other rubbish lying
on the field, in suitable lengths, preparatory to plowing under.
Deere, Mansur & Company, Kansas City, Missouri, display of agricultural implements by the
manufacturer or his agent.
A. B. Perine, Topeka, pruning knife.
J. B. Mitchell, Olathe, Kansas, pruning shears.
C. A. Pease, Lawrence, garden hoe.
James Swartz, Silver Lake, Kansas, broom corn scraper.
do do do do do corn plow and potato digger combined.

AWARDS.

LOT 29—THRESHING AND OTHER MACHINES.

J. E. Gorham, Topeka, mowing machine, first premiumCertificate
Marsh, Stewart & Company, Plano, Illinois, reaping machine, first premium..... do
Crawford, Gorham & Stone, Topeka, mower and reaper combined, first premium..... do
J. S. Martin, Kansas City, Missouri, combined self-raker, reaper and mower, first premium..... do
Deere, Mansur & Company, Kansas City, Missouri, fanning mill, first premium..... do
do do do do do cider mill, first premium..... do
do do do do do horse power corn sheller, first premium..... do
do do do do do hand power do do do do
Wilder & Palm, Lawrence, road scraper, first premium do
Deere, Mansur & Company, Kansas City, Missouri, implement for cutting corn stalks and other
rubbish lying on the field, in suitable lengths, preparatory to plowing under,
first premium..... do
Deere, Mansur & Company, Kansas City, Missouri, largest and best display of agricultural imple-
ments by the manufacturer or his agent.....Diploma.
A. B. Pierce, Topeka, pruning knife, first premium.....Certificate
C. A. Pease, Lawrence, garden hoe, first premium..... do
James Swartz, Silver Lake, Kansas, corn plow and potato digger combined, first premium..... do
W. W. Campbell & Brother, two or three-horse plow, first premium..... do

JOSHUA WHEELER,
S. P. ANGLER,
A. G. LEWIS,
JOHN INLOW.
W. M. MITCHELL,
Awarding Committee.

Reports of the Kansas State Board of Agriculture

STATE BOARD OF AGRICULTURE.

135

CLASS G—MECHANIC ARTS.

W. H. SMALLWOOD, SAMUEL KIMBALL,.....SUPERINTENDENTS.

ENTRIES.

LOT 30—ENGINES AND MACHINERY.

H. W. Wilcox, Beloit, Wisconsin, cheapest windmill and pump for farm purposes.
Deere, Mansur & Company, Kansas City, Missouri, pump for well.
do do do do do do pump for cistern.
L. A. Howell, Leavenworth, Kansas, pump for windmill.
Silver & Deming, Salem, Ohio, sausage stuffer.
H. H. Trowbridge, Kansas City, Missouri, water elevator, other than pump.
L. C. Chidington, King City, Missouri, well digging machine.
Deere, Mansur & Company, Kansas City, Missouri, mill for grinding sugar cane.
Moline Plow Company, Kansas City, Missouri, do do do do
N. C. Chamberlain, Ossawatimie, Kansas, animal trap.
Moline Plow Company, Kansas City, Missouri, meat cutter.
Silver & Deming, Salem, Ohio, meat cutter.
Samuel F. Atwood, Leavenworth, Kansas, water elevator, other than a pump.

AWARDS.

LOT 30—ENGINES AND MACHINERY.

H. W. Wilcox, Beloit, Wisconsin, cheapest windmill pump for farm purposes, first premium.....Certificate
Deere, Mansur & Company, Kansas City, Missouri, pump for well, first premium.....Certificate
do do do do do do do do doCertificate
Silver & Deming, Salem, Ohio, sausage stuffer, first premium.....Certificate
H. H. Trowbridge, Kansas City, Missouri, water elevator, other than pump, first premium.....Certificate
Silver & Deming, Salem, Ohio, meat cutter, first premium.....Certificate
L. C. Chidington, Kansas City, Missouri, well digging machine, first premium.....Certificate
L. C. Chamberlain, Ossawatimie, Kansas, animal trap, first premium.....Certificate

JESSEE RINEHART,
LEE WAUGH,
H. W. COOK,
Awarding Committee.

Reports of the Kansas State Board of Agriculture

136

TRANSACTIONS OF THE

ENTRIES.

LOT 31—STOVES, CASTINGS AND WORKED METALS.

B. P. Walling, Lawrence, gate for farm use.
 John Dooley, Leavenworth, horse shoes.
 Moline Plow Company, Kansas City, Missouri, portable drop lever scales.
 do do do do hay or cattle scales.
 do do do do portable scales with wheels.
 J. F. Achmedger, Leavenworth, fowling piece, two barrels.
 do do revolver, navy size.
 do do revolver, pocket size.
 W. H. Sprinkle, North Topeka, portable fence.
 Chicago Scale Company, Western Agency, Kansas City, Missouri, hay or cattle scales.
 E. B. Stephens, Brownville, Nebraska, self-regulating wire fence tightner.

AWARDS.

LOT 31—STOVES, CASTINGS AND WORKED METALS.

E. B. Stepeens, Brownville, Nebraska, self-regulating fence wire tightner, first premium.....Certificate
 B. P. Walling, Lawrence, gate for farm use, first premium.....do
 John Dooley, Leavenworth, horse shoes, first premium.....do
 Moline Plow Company, Kansas City, Missouri, hay or cattle scales, first premium.....do
 do do do do portable scales with wheels.....do
 J. F. Achmedger, Leavenworth, fowling piece, two barrels, first premium.....do
 do do revolver, navy size, first premium.....do
 do do revolver, pocket size, first premium.....do
 W. H. Sprinkle, North Topeka, portable fence, first premium.....do

A. B. WHITING,
 A. N. MUSSEY,
 JESSE RINEHART,
Awarding Committee.

ENTRIES.

LOT 32—VEHICLES.

J. A. Polly, Topeka, piano box carriage.
 do do top buggy, Kansas manufacture.
 Cretors & Potter, Leavenworth, top buggy, Kansas manufacture.
 George D. Wallace, North Topeka, open buggy.
 H. Finskey, do do do
 Cretors & Potter, Leavenworth, do
 J. A. Polly, Topeka, track sulky.
 Cretors & Potter, Leavenworth, two-horse carriage.

Reports of the Kansas State Board of Agriculture

STATE BOARD OF AGRICULTURE.

137

Wilder & Palm, Lawrence, two-horse wagon.	
do do do do do	
H. Finskey, North Topeka, do do	
Knox, McAfee & Co., do do do	
J. A. Polly, do spring do	
William Bradshaw, do do do	
H. Finskey, North do do do	
G. D. Wallace, North do do do	
Cretors & Potter, Leavenworth, do do	
Knox, McAfee & Co., Topeka, do do	
A. J. Huntoon, do "C" spring passenger wagon.	

AWARDS.

LOT 32—VEHICLES.

J. A. Polly, Topeka, top buggy, Kansas manufacture, first premium.....	Certificate and \$20 00
Cretors & Potter, Leavenworth, open buggy, first premium.....	do
J. A. Polly, Topeka, track sulky, first premium.....	do
Wilder & Palm, Lawrence, two-horse wagon, first premium.....	do
Cretors & Potter, Leavenworth, two-horse carriage, Kansas manufact, first premium,	do do 25 00
Knox, McAfee & Co., Topeka, do wagon, do do do do do	do do 20 00
J. A. Polly, Topeka, spring wagon, first premium.....	do

A. B. WHITING,
L. BABCOCK,
A. N. MUSSEY,
JESSE RINEHART,
E. S. STOVER,
Awarding Committee.

ENTRIES.

LOT 33—FURNITURE AND HOUSEHOLD IMPLEMENTS.

Mrs. I. J. Faxton, Topeka, wall pockets.	
C. A. Sexton, Topeka, window shades.	
Deere, Mansur & Company, Kansas City, Missouri, churn.	
W. W. Campbell & Brother, Topeka, washing machine.	
William J. Freeman, do do do	
H. S. Pike, do do do	
J. N. Severes, Leavenworth, Kansas, do do	
L. Chamberlain, Atchison, do do	
S. J. Wilkinson, Highland, do do do	

Reports of the Kansas State Board of Agriculture

138

TRANSACTIONS OF THE

AWARDS.

LOT 33—FURNITURE AND HOUSEHOLD IMPLEMENTS.

Mrs. I. J. Faxton, Topeka, wall pockets, first premium.....	Certificate.
Deere, Mansur & Company, Kansas City, Missouri, churn, first premium.....	do
L. Chamberlin, Atchison, Kansas, washing machine, first premium.....	do

A. B. WHITING,
A. N. MASSEY,
JESSE RINEHART,
E. S. STOVER,
L. BABCOCK,
E. G. BECK,
GEORGE MCGINLEY,

Awarding Committee.

ENTRIES.

LOT 34—MANUFACTURES OF ALL KINDS.

William Carpenter, Lawrence, Kansas, embroidery attachment to sewing machine.
H. H. Trowbridge, Kansas City, Missouri, spring bed-bottom.
A. W. Hayes, Topeka, spring bed-bottom.
C. A. Sexton, Topeka, display of fancy goods.
H. H. Trowbridge, Kansas City, Missouri, butter pail.
do do do do egg carrier.
do do do do snow shovel.
Burkhard & Oswald, Topeka, carriage harness.
J. H. Rothenberger, Leavenworth, Kansas, cooper work.
Hartsock & Gossett, Topeka, display of saddlery.
Burkhard & Oswald, Topeka, carriage harness.
B. S. Richards, Leavenworth, Kansas, carriage harness.
Burkhard & Oswald, Topeka, single buggy harness.
B. S. Richards, Leavenworth, Kansas, single buggy harness.
Burkhard & Oswald, Topeka, do do do do
do do do gentleman's saddle.
B. S. Richards, Leavenworth, Kansas, gentleman's saddle.
do do do ladies' saddle.
do do do horse collar.
Burkhard & Oswald, Topeka, do do
do do do saddle tree.
John Gilbert, Ypsilanti, Michigan, milk safe.
C. A. Sexton, Topeka, writing paper.
Crane & Byron, do specimen of blank ruling.
do do do bound books, Kansas manufacture.
do do do printed blank books.
do do do ruled blank books.
do do do specimen blank books.
do do do do do do
do do do display of books published in Kansas.
I. D. Dougherty, Topeka, burial casket.
D. C. Blackman, Leavenworth, Kansas, machine stitching.

Reports of the Kansas State Board of Agriculture

STATE BOARD OF AGRICULTURE.

139

Solomon Miller, Troy, Kansas, newspaper, "Kansas Chief."
 I. S. Kellogg, Lawrence, newspaper, "Spirit of Kansas."
 W. T. McElroy & Company, Humboldt, Kansas, newspaper, "Humboldt Union."
 L. J. Vincent, Topeka, weather strip.
 Henry Barnard, Marion, Ohio, water wheel.
 C. A. Sexton, Topeka, paper hangings and borders.
 Church & Co., do do do do do
 E. M. Loomis, Ripon, Wisconsin, specimen of roofing.
 Hugo Kullak, Topeka, do do
 Church & Company, Topeka, school house furniture.
 Crawford, Gorham & Stone, Topeka, school house furniture.
 C. A. Sexton, do do do do
 R. G. Martin, do do do do
 C. C. Burgan, St. Louis, Missouri, do do do
 A. D. Demming, Oil City, Pennsylvania, electro magnetic apparatus.
 Jos. Sterling, Leavenworth, Kansas, watch, Kansas manufacture.
 Grover & Baker Sewing Machine Company, Boston, Massachusetts, sewing machine:
 do do do do do do do
 do do do do do do do
 do do do do do do do
 do do do do do do do
 do do do do do do do
 Gelger & McGrath, Topeka, Bles sewing machine.
 C. W. Bright, Topeka, Domestic do do
 C. S. Hartsong, do Wheeler & Wilson sewing machine.
 Weed Sewing Machine Company, Weed do do
 C. Bownan, Topeka, sewing machine.
 Wm. Nichols, do do do
 D. C. Blackman, Leavenworth, Kansas, sewing machine.
 Maria I. Albert, Topeka, knitting machine.
 Crane & Byron, do display of legal blanks.

AWARDS.

LOT 34—MANUFACTURES OF ALL KINDS.

Wm. Carpenter, Lawrence, Kansas, embroidering attachment to sewing machine, first prem.....Certificate
 C. A. Sexton, Topeka, display of fancy goods, first premium..... do
 H. H. Trowbridge, Kansas City, Missouri, butter pail, first premium..... do
 J. H. Rothinberger, Leavenworth, Kansas, coopers' work..... do
 Hartsock & Gossett, Topeka, display of saddlery hardware, whips, and collars, first premium.... do
 B. S. Richards, Leavenworth, Kansas, carriage harness, Kansas manufacture, first
 premium.....Certificate and \$20 00
 B. S. Richards, Leavenworth, Kansas, single buggy harness, Kansas manufacture,
 first premium..... do do 10 00
 Burkhard & Oswald, Topeka, gentlemen's saddle, Kansas manufacture, first prem. do do 5 00
 B. S. Richards, Leavenworth, Kansas, ladies' saddle, do do do do do 5 00
 do do do horse collars, do do do do do 5 00
 Burkhard & Oswald, Topeka, saddle tree, first premium.....Certificate.
 George Heart, agent for John Gilbert, Ypsilanti, Michigan, milk safe, first premium..... do
 Crane & Byron, Topeka, blank ruling, first premium..... do
 do do do display of bound books, first premium..... Diploma.
 do do do do of printed do do do do do do
 do do do do of books published in Kansas, first premium..... do
 do do do do of blank books, Kansas manufacture, first premium..... do

Reports of the Kansas State Board of Agriculture

140

TRANSACTIONS OF THE

Commonwealth Company, Topeka, book binding, Kansas manufacture, first premium.....	Diploma.
Crane & Byron, Topeka, specimen blank book.....	do
do do do ruled blank books.....	do
J. M. Dougherty, do burial casket.....	do
Crane & Byron, do printed blank books, first premium.....	do
D. C. Blackman, Leavenworth, Kansas, machine stitching, first premium.....	do
Solomon Miller, Troy, Kansas, best printed newspaper, "Kansas Chief," first premium.....	do
L. J. Vincent, Topeka, weather strip, first premium.....	Certificate.
Church & Company, Topeka, paper hanging and borders, first premium.....	do
H. Kullak, do specimen roofing, first premium.....	do
Church & Company, do display of school house furniture, first premium.....	do
A. D. Demming, Oil City, Pennsylvania, electro magnetic apparatus, first premium.....	do
Joseph Sterling, Leavenworth, Kansas, best watch, Kansas manufacture, first prem.,	Diploma and \$10 00
D. C. Blackman, Leavenworth, Kansas, sewing machine, first premium.....	Certificate.
Marion J. Albert, Topeka, knitting machine, first premium.....	do

JOSHUA WHEELER,
JESSE REINHART,
GEORGE MCGINLEY,
E. G. BECK,
D. H. HORNE,
D. DICKINSON,

Awarding Committee.

CLASS H—FARM PRODUCTS.

J. N. INSLEY,.....SUPERINTENDENT.

ENTRIES.

LOT 35—GRAIN AND SEEDS.

H. Campbell, Topeka, white winter wheat.
G. H. Woods, do red or amber winter wheat.
Andrew Watson, do do do do
Joseph Middough, Topeka, samples of spring wheat.
J. C. Vincent, Leocompton, Kansas, sample of rye.
do do do do do
John Richter, Topeka, sample of oats.
Stephen Plaxton, do do do
J. R. Warren, do do do

Reports of the Kansas State Board of Agriculture

STATE BOARD OF AGRICULTURE.

141

E. S. Ward, North Topeka, sample of oats.
A. R. Heath, do do do do
W. P. Popenoe, Topeka, sample of white Indian corn.
David Barber, North Topeka, sample of white Indian corn.
E. Johnson, North Topeka, do do do do
J. K. Hudson, Wyandotte, Kansas, sample of white Indian corn.
do do do do do do
W. P. Popenoe, Topeka, do do do do do
D. R. Armstrong, do do do do do
William Murphy do do do do do
W. F. Johnston, Silver Lake, Kansas, sample of white Indian corn.
Lemuel Phelps, Topeka, do do do do do
D. P. Matthews, do do do do do
Henry Shattlo, do do do do do
William Venable, North Topeka, do do do do do
E. D. Snyder, Topeka, do do do do do
U. H. Shockley, do do do do do
Peter K. Long, Big Springs, do do do do do
E. S. Ward, North Topeka, do do do do do
A. L. Coleman, do do do do do
M. R. Dutton, Grantville, do do do do do
A. Carrico, Topeka, do do do do do
Isaac Renfro, do do do do do
E. A. Popenoe, do do do yellow do do
J. K. Hudson, Wyandotte, do do do do do
do do do do do do
do do do do do do
J. A. Troutman, Topeka, do do do do do
D. R. Armstrong, do do do do do
Henry Hall, do do do do do
E. A. Goodell, do do do do do
A. G. Allen, Manhattan, do do do do do
A. B. Wade, Lawrence, do do do do do
William Venable, North Topeka, do do do do do
Robert Jackson, Topeka, do do do do do
William Anderson, Richwoods, do do do do do
E. D. Snyder, North Topeka, do do do do do
J. B. Higdon, Le Roy, do do do do do
Geo. Starmouse, Leavenworth, do do do do do
Henry Sutter, Perryville, do do do do do
James F. Jones, do do do do do
A. Carrico, Topeka, do do do do do
Mrs. W. H. Smith, Topeka, do do do do do
A. F. McCaslin, do do do do do
W. F. Lyman, do do do do do
E. A. Popenoe, do do sample of corn on the stalk.
E. R. Woods, do do do do do
J. K. Hudson, Wyandotte, do do do do do
E. A. Goodill, Topeka, do do do do do
I. S. Curtis, do do do do do
A. F. McCaslin, do do do do do
W. H. Sprinkle, North Topeka, do do do do do
A. B. Wade, Lawrence, do do do do do
A. Carrico, Topeka, do do do do do
W. F. Johnson, Silver Lake, do do do do do
Noah Cameron, Lawrence, Kansas, sample of buckwheat.
A. A. Ripley, Topeka, do do do do
F. A. Ripley, do do do do do
A. K. Callahan, do do do do do
J. W. Williams, Grasshopper Falls, Kansas, sample of buckwheat.
C. A. Coleman, Kanwaka, Kansas, sample of timothy seed.
J. B. Higdon, Le Roy, do do do do do
Joshua Wheeler, Pardee, do do do do do
W. W. Campbell & Brother, Topeka, sample of clover seed.
J. C. Adams, do do do do do

Reports of the Kansas State Board of Agriculture

142

TRANSACTIONS OF THE

Noah Cameron, Lawrence, Kansas, sample of clover seed.
W. W. Campbell & Brother, Topeka, sample of blue grass seed.
do do do do do do
M. R. Dutton, Grantville, Kansas, do do do
J. W. Williams, Grasshopper Falls, Kansas, sample of blue grass seed.
W. W. Cone, Dover, Kansas, display of seeds produced from seed distributed by the department
of agriculture, at Washington, D. C.
J. K. Hudson, Wyandotte, Kansas, new variety of corn not before exhibited.
do do do do do do do
J. R. Warren, Topeka, do do oats do do
F. G. Barnett, Parsons, do do do do do
W. F. Johnston, Silver Lake, do do corn do do
M. R. Dutton, Grantville, do do do do do

AWARDS.

LOT 35—GRAIN AND SEEDS.

W. M. Snyder, Topeka, best sample of white winter wheat.....\$10 00
G. H. Woods, Topeka, best sample of red amber winter wheat..... 10 00
Andrew Watson, Topeka, second best do..... 5 00
Joseph Middough, Topeka, best sample of spring wheat..... 5 00
J. C. Vincent, Leocompton, Kansas, best sample of rye..... 10 00
do do do second best do..... 5 00
John Richter, Topeka, best sample of oats..... 10 00
Stephen Plaxton, Topeka, second best do..... 5 00
E. Johnson, North Topeka, best sample of white Indian corn .. 10 00
E. D. Snyder, Topeka, second best do..... 5 00
Henry Hall, Topeka, best sample of yellow Indian corn..... 10 00
James T. Jones, Perryville, Kansas, second best do 5 00
H. E. Goodell, Topeka, best sample of corn on the stalk..... 5 00
W. F. Johnson, Silver Lake, Kansas, second best do..... 3 00
A. K. Callahan, Topeka, best sample of buckwheat..... 10 00
Noah Cameron, Lawrence, second best do..... 5 00
C. A. Colman, Kanwaka, Kansas, best sample of timothy seed..... 10 00
J. B. Higdon, Le Roy, Kansas, second best do..... 5 00
J. C. Adams, Topeka, best sample of clover seed..... 10 00
Noah Cameron, Lawrence, second best do..... 5 00
W. W. Campbell & Brother, Topeka, best sample of blue grass seed..... 5 00
M. R. Dutton, Grantville, Kansas, second best do..... 3 00
W. W. Cone, Dover, Kansas, best display of seed produced by seed issued from the department of
Agriculture, Washington, D. C.....Diploma
M. R. Dutton, Grantville, Kansas, best exhibition of new variety of white Indian corn, not before
exhibited\$10 00

E. T. ELLIS,
R. S. ELLIOTT,
C. S. BRODBENT,
J. WINTRODE,
Awarding Committee.

Reports of the Kansas State Board of Agriculture

STATE BOARD OF AGRICULTURE.

143

ENTRIES.

LOT 36—VEGETABLES.

J. J. Fisher, Topeka, display of garden vegetables by any State, county, township, society or individual.

E. J. Holman, Leavenworth, display of garden vegetables by any State, county, township, society or individual.

Colin Cameron, Maple Hill, Kansas, late Irish potatoes.

Thomas White, Topeka, do do do

E. H. Harrop do do do do

G. H. Woods, do do do do

D. R. Armstrong, do do do do

A. Washburn, do do do do

J. K. Hudson, Wyandotte, do do do

do do do do do

do do do do do

do do do do do

M. Nichols, North Topeka, do do do

Peter K. Long, Big Springs, do do do

Oliver Selover, Topeka, do do do

do do do do do

A. A. Ripley, do do do do

C. E. Granger, do do do do

Welcome Wells, Manhattan, do do do

D. Thompson, Topeka, do do do

J. W. Williams, Grasshopper Falls, do do do

C. H. Barton, Topeka, do do do

John Scheamer, Hutchinson, Kansas, do do do

do do do do do

W. H. Sprinkle, North Topeka, do do do

W. F. Johnson, Silver Lake, do do do

Mrs. Moot, Dover, do do do

T. Gordon, Topeka, do do do

Colin Cameron, Maple Hill, Kansas, early Irish potatoes.

G. H. Woods, Topeka, do do do

D. R. Armstrong, do do do do

H. Freeman, North Topeka, do do do

J. K. Hudson, Wyandotte, do do do

do do do do do

do do do do do

do do do do do

J. F. Nichols, North Topeka, do do do

Lemuel Phelps, Topeka, do do do

E. J. Holman, Leavenworth, do do do

John Richter, Topeka, do do do

W. F. Johnston, Silver Lake, do do do

J. B. Higdon, Le Roy, do do do

C. H. Barton, Topeka, do do do

Joshua Wheeler, Pardee, do do do

G. H. Woods, Topeka, sample of sweet potatoes.

D. R. Armstrong, Topeka, Kansas, sample of sweet potatoes.

Frank Washburn, do do do do

Thomas Howard, North Topeka, do do do

A. K. Callahan, Topeka, do do do

J. L. Rodgers, do do do do

E. S. Ward, North Topeka, do do do

C. H. Barton, Topeka, do do do

W. H. Sprinkle, North Topeka, do do do

A. Palmer, Topeka, do do do

C. B. Lines, Wabaunsee, Kansas, do do do

do do do do do

do do do do do

Reports of the Kansas State Board of Agriculture

144

TRANSACTIONS OF THE

E. H. Harrop, Topeka, lot of onions.
W. W. Campbell & Brother, Topeka, lot of onions.
do do do do do
W. W. Campbell & Brother, Topeka, lot of onions.
J. W. Priddy, do do do
A. A. Ripley, do do do
Robert Jackson, do do do
J. G. Otis, do do do
W. B. Ogg, North Topeka, do do
E. A. Goodell, do do do
C. H. Barton, do do do
Henry Sutter, Perryville, Kansas, do do
Mrs. G. Garlinghouse, Topeka, do do
I. M. James, do do do
J. K. Winship, do do do
David Hartsock, do do do
E. H. Harrop, do beets for table use.
J. J. Fisher, do do do
David Hartsock, do do do
Florance E. Priddy, do do do
Bernard Tobias, do do do
Lemuel Phelps, do do do
E. A. Goodell, do do do
C. H. Barton, do do do
A. Palmer, do do do
E. J. Holman, Leavenworth, Kansas, mangold wurzel.
Thomas Howard, Topeka, parsnips for table use.
G. Garlinghouse, do do do do
Josepe Leichte, do lot of celery.
J. L. Rodgers, do do do
J. W. Williams, Grasshopper Falls, Kansas, lot of celery.
J. W. Knapp, Dover, Kansas, sample of egg plant.
E. H. Harrop, Topeka, cabbage.
Lemuel Phelps, do do
C. H. Barton, do do
C. B. Lines, Wabaunsee, Kansas, half bushel of tomatoes.
J. L. Rodgers, Topeka, do do do do
Mrs. G. Garlinghouse, Topeka, do do do do
do do do do do do
U. H. Shockley, do do do do do
Mrs. S. C. Brown, do do do do do
A. Palmer, do do do do do
Henry Brown & Co., Lawrence, do do do do
James Merrill, Topeka, do do do do
F. A. Ripley, do half bushel of white beans.
A. A. Ripley, do do do do
H. E. Goodell, do peck of Lima beans.
E. D. Snyder, do do do do
C. H. Barton, do do do do
Thomas W. Howard, Topeka, stalk of castor beans.
do do do lot of pumpkins.
William Murphy, do do do do
John Richler, do do do do
D. Thompson, do squash.
U. H. Shockley, do do
J. W. Williams, Grasshopper Falls, Kansas, squash.
J. J. Fisher, Topeka, display of squashes.
E. J. Holman, Leavenworth, Kansas, display of squashes.
D. Thompson, Topeka, display of squashes.
Lemuel Phelps, do do do do
C. H. Barton, do do do do
Mrs. G. Garlinghouse, Topeka, lot of watermelons.
Mrs. S. C. Brown, do do do do
E. J. Holman, Leavenworth, Kansas, dozen muskmelons.

Reports of the Kansas State Board of Agriculture

STATE BOARD OF AGRICULTURE.

145

E. H. Harrop, Topeka, samples of carrots.
 J. W. Williams, Grasshopper Falls, Kansas, sample of carrots.
 C. H. Barton, Topeka, sample of carrots.
 G. W. Fisher, Topeka, display of vegetables, samples separate from the foregoing, by one person.
 E. J. Holman, Leavenworth, display of vegetables, samples separate from the foregoing, by one person.
 C. H. Barton, Topeka, display of vegetables, samples separate from the foregoing, by one person,
 David Barber, North Topeka, tobacco,
 J. W. Williams, Grasshopper Falls, Kansas, tobacco.
 William Carroll, Topeka, tobacco.
 A. S. Dimock, Hutchinson, Kansas, winter squash.
 J. W. Williams, Grasshopper Falls, Kansas, winter squash.
 E. H. Harrop, Topeka, Kansas, half bushel of peanuts.
 T. W. Howard, North Topeka, do do do
 W. B. Whitton, do do do do
 Collin Cameron, Maple Hill, Kansas, early potatoes, new variety.
 Thomas White, Topeka, do do do do
 J. K. Hudson, Wyandotte, do do do do
 do do do do do
 do do do late potatoes, new variety.
 do do do do do
 do do do do do
 do do do do do
 Collin Cameron, Maple Hill, do do do do
 Thomas White, Topeka, do do do do
 J. W. Williams, Grasshopper Falls, Kansas, late potatoes, new variety.

AWARDS.

LOT 36—VEGETABLES.

E. J. Holman, Leavenworth, greatest and best display of vegetables by any State, county, township, society or individual.....\$25 00

Your Committee in Class H, Lot 36, would report that they find only two entries under the ring "best display of garden vegetables by any State, county, township, society or individual." They award a premium of \$25.00 to the entry of Mr. E. J. Holman, of Leavenworth.

Your Committee decline to award to either exhibitor the full premium of \$100.00, believing that neither display is of such a meritorious character as to entitle it to so handsome a reward of skill and care as \$100.00.

Your Committee find neither display at all equal to those of other exhibitors entered for smaller premiums, in such leading vegetables as Irish and sweet potatoes, onions, cabbage, beets, pumpkins and celery, not to mention minor articles. On this account they are unwilling to award \$100.00; such an award, we believe, would be setting a most unwise

EDWARD RUSSELL,
R. S. ELLIOTT,
E. T. ELLIS,
M. R. DUTTON,
JAS. L. McDOWELL,

Awarding Committee.

(SAMPLES DISTINCT FROM THE FOREGOING.)

SAMPLES DISTINCT FROM THE FOREGOING.		
H. Freeman, North Topeka, best sample of early Irish potatoes.....		\$10 00
E. J. Holman, Leavenworth, Kansas, second best.....		5 00
Edmund H. Harrop, North Topeka, best sample of Irish potatoes.....		10 00
Welcome Wells, Manhattan, Kansas, second best.....		5 00
Thomas W. Howard, North Topeka, best sample of sweet potatoes.....		10 00
C. B. Lines, Wabaussee, Kansas, second best.....		5 00
T. M. James, Topeka, best lot of onions.....		5 00
Mrs. G. Garlinghouse, Topeka, second best.....		8 00
W. Palmer, Topeka, best beets for table use.....		3 00
E. H. Harrop, North Topeka, second best.....		2 00
E. J. Holman, Leavenworth, Kansas, best mangul wozzel.....		3 00
Thomas W. Howard, North Topeka, best parsnips for table use.....		3 00
Mrs G. Garlinghouse, Topeka, second best.....		2 00
J. L. Rodgers, Topeka, best lot of celery.....		5 00
Joseph Leichte, Topeka, second best.....		3 00
Edmund H. Harrop, North Topeka, best cabbage.....		3 00
Samuel Phillips, Topeka, second best.....		2 00
W. H. Shockley, Topeka, best tomatoes.....		3 00
A. Palmer, Topeka, second best.....		2 00
E. D. Snyder, Topeka, best lima beans.....		3 00
H. E. Goodell, Topeka, second best.....		3 00
Thomas W. Howard, Topeka, best castor beans.....		Certificate
William Murphy, Topeka, best lot of pumpkins.....		\$ 2 00
William Williams, Grasshopper Falls, Kansas, best squash.....		2 00
D. Thompson, Topeka, second best.....		1 00
J. J. Fisher, Topeka, best display of squashes.....		5 00
Mrs. G. Garlinghouse, Topeka, best lot of watermelons.....		3 00
Mrs. S. C. Brown, Topeka, second best.....		3 00
E. J. Holman, Leavenworth, best lot of muskmelons.....		3 00
G. W. Fisher, Topeka, best and greatest display of vegetables, samples separate from the foregoing, by one person.....		2 00 15 00
C. W. Barton, second best.....		10 00
David Barber, North Topeka, best sample of not less than ten lbs. of tobacco on stalk.....		3 00
W. M. Carroll, Topeka, second best.....		1 50
J. W. Williams, Grasshopper Falls, Kansas, best squash.....		5 00
W. B. Whitton, Topeka, best one-half bushel of peanuts raised in Kansas.....		3 00
J. K. Hudson, Wyandotte, Kansas, best early potatoes, new variety not before exhibited.....		Diploma
do do do do late do do do do.....		Diploma
M. R. DUTTON, J. WINTROBE, C. S. BRODBENT,		

Awarding Committee.

Reports of the Kansas State Board of Agriculture

STATE BOARD OF AGRICULTURE.

147

ENTRIES.

LOT 37—FLOUR, STARCH, BUTTER, CHEESE, Etc.

Plummer & North, Leavenworth, Kansas, sample of flour.
do do do do do do
do do do do do do
Mrs. Hugh Campbell, Topeka, Kansas, starch of wheat.
do do do do do Indian Corn.
W. B. Whitton, do do do do
E. N. Coleman, Kanwaka, do do do
Sophia Alexander, Burlingame, do do do
Joshua Wheeler, Pardee, Kansas, butter made in May or June.
Mrs. W. S. Rankin, Topeka, Kansas, butter made in May or June.
Emma Claus, do do do do do
John A. White, do do do do do
do do do do do do
Mrs. F. West, Holton, do do do do
Mrs. E. A. Coleman, Kanwaka, Kansas, do do
L. Sternberg, Fort Harker, do do do do
Mrs. Ira H. Smith, Topeka, do do do do
Mrs. J. M. Haywood, do do do do do
H. E. Bush, Auburn, do do do do
Mrs. E. M. Mitchell, Lawrence, do do do
John H. White, Topeka, Kansas, fresh butter.
Colin Cameron, Maple Hill, Kansas, fresh butter.
Joshua Wheeler, Pardee, do do
Mrs. W. S. Rankin, Tecumseh, do do
Samuel Benham, Topeka, do do
Mrs. R. S. Hibbard, do do do
Mrs. David Hartsock, Topeka, Kansas, fresh butter.
do do do do do
Alice W. Hayes, Manhattan, do do
Mrs. E. M. Mitchell, Lawrence, do do
H. E. Bush, Auburn, do do
Mrs. A. Washburn, Topeka, do do
Mrs. F. West, Holton, do do
Adelaid Newman, Topeka, do do
J. B. Higdon, Le Roy, do do
Dr. L. Sternberg, Fort Harker, do do
Mrs. R. J. Hibbard, Topeka, Kansas, cheese under one year.
I. J. Hill, do do do do do
S. C. James, Hartford, do do do do
W. D. Smith, do do do do do
M. R. Dutton, Grantville, do sdrgum syrup.
Solomon Shoal, Centropolis, do do do
S. G. Burt, Topeka, do do
Solomon Shoal, Centropolis, Kansas, do sugar.
M. R. Dutton, Grantville, do do do

AWARDS.

LOT 37—FLOUR, STARCH, BUTTER, CHEESE, Etc.

Plummer & North, Leavenworth, best sample flour.....	\$ 5 00
C. A. Coleman, Kanwaka, best starch of Indian corn.....	8 00
Hugh Campbell, Topeka, second best.....	1 00

Reports of the Kansas State Board of Agriculture

148

TRANSACTIONS OF THE

Mrs. T. West, Holton, Kansas, best butter made in May or June, not less than five pounds.....	15 00
John A. White, Topeka, second best.....	10 00
Mrs. E. M. Mitchell, Lawrence, best fresh butter, not less than five pounds.....	10 00
J. B. Higdon, Le Roy, Kansas, second best.....	5 00
S. C. James, Hartford, Kansas, best cheese under one year old.....	15 00
W. D. Smith, Hartford, Kansas, second best.....	10 00
M. R. Dutton, Grantville, Kansas, best sorghum syrup, one gallon.....	5 00
M. R. Dutton, Grantville, Kansas, best sorghum sugar, five pounds.....	5 00

J. B. FLUNO,
FRED. MILLER,
S. L. NORTH,

Awarding Committee.

ENTRIES.

LOT 38—BREAD, CAKE AND PICKLES.

Mrs. Hugh Campbell, Topeka, Kansas, wheat bread with hop yeast.					
Mrs. W. M. Bluelock, do do do do do do					
Lizzie V. Rankin, Tecumseh, do do do do do do					
Mrs. S. C. Brown, Topeka, do do do do do do					
Annie J. Perkins, Tecumseh, do do do do do do					
Miss Tillie Steele, Topeka, do do do do do do					
Mrs. T. H. Church, Topeka, do do do do do do					
Mrs. David Hartsock, Topeka, do do do do do do					
do do do do do do					
Mrs. W. H. Weymouth, Topeka, do do do do do do					
Mrs. G. W. Herron, do do do do do do					
Mrs. C. A. Rodgers, do do do do do do					
Mrs. Jane Baird, North do do do do do do					
Mrs. J. Richter, do do do do do do					
Mrs. Wm. Chase, do do do do do do					
Miss Sarah Norman, do do do do do do					
A. Roberts, Big Springs, do do do do do do					
Mrs. E. M. Mitchell, Lawrence, do do do do do do					
Mrs. S. Alexander, Burlingame, do do do do do do					
Mrs. W. H. Smith, Topeka, do do do do do do					
Mrs. G. L. Gordon, do do do do do do					
Mrs. Hugh Campbell, Topeka, do do do do milk rising.					
Mrs. W. M. Bluelock, do do do do do do					
Emma Claus, do do do do do do					
Miss Mary Adams, do do do do do do					
Mrs. David Hartsock, do do do do do do					
Mrs. M. Nichols, North do do do do do do					
Mrs. L. H. Elliott, Carbondale, do do do do do do					
Mrs. J. A. McLaughlin, Topeka, do do do do do do					
A. Carson, do do do do do do					
Mrs. E. M. Mitchell, Lawrence, do do do do do do					
Mrs. A. Atwater, Cook's Ford, do do do do do do					
Mrs. W. H. Weymouth, Topeka, Kansas, bread of unbolted flour.					
Mrs. G. W. Herron, do do do do do					
Mrs. W. M. Bluelock, do do do do do					
Mrs. A. Washburn, do do do do do					
Miss Virginia Steele, do do do do do					
Mrs. T. H. Church, do do do do do					
Mrs. Hugh Campbell, do do do do do					
do do do do rye bread.					