

## Reports of the Kansas State Board of Agriculture

### Section 343, Pages 10261 - 10290

These reports by the State Board of Agriculture include the proceedings of the board, reports for the previous year, maps of counties, abstracts of counties, miscellaneous articles, and reports of agricultural societies, the state fair, state and county statistics, agricultural industries and products, the agricultural college, and the Kansas Academy of Science. The annual reports began in 1872 and were succeeded by biennial reports beginning in 1877-78. Volume numbers were discontinued with the 1953-1956 report; the last being volume 44. From 1953 to 1976 the reports drop "biennial" from the title. Annual reports begin again from 1976 to 1984, except 1982-1983 which is biennial. The dates for each report reflects the reporting year and not the publication date, which was usually a year later. The title of each report reflects the form given on the title page. Only volumes 1 (1872), 2 (1873), 3 (1874), 4 (1875), the centennial edition (1875), 5 (1876), 6 (1877-1878), 7 (1879-1880), 10 (1885-1886), 11 (1887-1888), 13 (1891-1892), and 14 (1893-1894) are currently available.

Creator: Kansas State Board of Agriculture

Date: Bulk 1872-1984

Callnumber: SP 630.6 K13

KSHS Identifier: DaRT ID: 210899

Item Identifier: 210899

[www.kansasmemory.org/item/210899](http://www.kansasmemory.org/item/210899)

KANSAS  
HISTORICAL  
SOCIETY

## Reports of the Kansas State Board of Agriculture

662

### *Kansas State Board of Agriculture.*

in the American congress, and believing that his usefulness to the farmers and stock-raisers of America would be greatly augmented by his occupying a place upon the committee on agriculture: therefore,

*Resolved*, By the State Board of Agriculture, in its twenty-eighth annual session, that the honorable secretary of agriculture, at Washington, be requested to urge the appointment of Hon. W. J. Bailey, of Kansas, to a prominent place upon the congressional committee on agriculture.

*Resolved*, That the secretary of the State Board of Agriculture be authorized to properly engross the above resolution and present it to the Hon. W. J. Bailey.

A paper was presented by J. H. Neff, editor of the *Kansas City Drovers Telegram*, entitled "Kansas as a Stock-growing State," and one by W. S. Hannah, of Kansas City, entitled "As Seen by the Commission Man."

Resolutions offered by J. H. Churchill in reference to tuberculosis were discussed at some length, and finally a motion to lay them on the table was adopted.

Adjourned until 7:30 P. M.

#### FRIDAY EVENING SESSION.

Meeting convened at 7:30 P. M. in Representative hall; President Glick in the chair.

Mr. J. Logan Jones, of Kansas City, Mo., read a paper upon the subject of "The Farmer and his Wife as Seen by the Merchant," and Mrs. C. F. Wilder, of Manhattan, presented a paper entitled "Another Point of View."

On motion of Ed. R. Smith and A. W. Smith, a vote of thanks was extended to each of the ladies and gentlemen who had honored the Board by preparing papers and addresses and presenting them at this, its twenty-eighth annual meeting.

On motion of Edwin Taylor, the meeting adjourned *sine die*.

#### MEETING OF THE NEW BOARD.

FRIDAY, January 13, 1899.

The Board met in the secretary's office at seven o'clock P. M., and was called to order by President Glick.

Roll-call; a quorum present.

The oath of office was administered to the newly elected officers and members by Notary E. W. Longshore, as follows: T. A. Hubbard, president; Edwin Taylor, vice-president; Edwin Snyder, treasurer; and Chas. E. Sutton, Ed. R. Smith and G. W. Glick, members. Members elect Geo. W. Hanna and J. T. Cooper were absent.

Appointive officers for the ensuing year were named, as follows: Geologists, Prof. Erasmus Haworth, Lawrence, and Prof. G. P. Grimsley, Topeka; entomologists, Profs. F. H. Snow and S. J. Hunter, Lawrence, Prof. E. A. Popenoe, Berryton, and Prof. ———, Manhattan; meteorologists, Prof. J. T. Lovewell and T. B. Jennings, Topeka; botanists, Prof. L. E. Sayre, Lawrence, and Prof. A. S. Hitchcock, Manhattan; chemists, Prof. E. H. S. Bailey, Lawrence, and Prof. J. T. Willard, Manhattan; honorary veterinarian, Dr. Paul Fischer, Manhattan.

Secretary F. D. Coburn, G. W. Glick and Ed. R. Smith were continued as a committee on printing and program.

On needed legislation, the following were appointed as the committee: Pres. T. A. Hubbard, G. W. Glick, Edwin Snyder, Ed. R. Smith, I. L. Diesem, Edwin Taylor, Geo. W. Hanna, J. H. Churchill, and A. W. Smith.

Thereupon the Board voted to take a recess, to meet subject to call by the secretary, if he should deem it necessary.



## Reports of the Kansas State Board of Agriculture

*Twelfth Biennial Report.*

663

### PROCEEDINGS

OF THE TWENTY-NINTH ANNUAL MEETING OF THE KANSAS  
STATE BOARD OF AGRICULTURE, HELD IN TOPEKA,  
JANUARY 10, 11, AND 12, 1900.

WEDNESDAY, January 10, 1900.

The meeting was called to order by President Hubbard, in Representative hall, at four o'clock P. M.

The roll was called by Secretary Coburn, and a quorum declared present.

On motion, the chair appointed a committee on credentials, consisting of Messrs. Ed. R. Smith, G. W. Glick, Nicholas Mayrath, E. Harrington and H. G. Toler.

The minutes of the proceedings of the twenty-eighth annual meeting were read and approved.

Treasurer Edwin Snyder then made his report, which was adopted.

On motion, the president appointed the following committee on program: A. W. Smith, Chas. E. Sutton, and G. W. Roberts.

The committee on credentials made its report, naming the following as duly authorized delegates to the twenty-ninth annual meeting of the Kansas State Board of Agriculture:

J. T. Tredway, Allen county; C. H. Rice, Anderson county; E. Harrington, Brown county; J. W. Robison, Butler county; Arch Miller, Chase county; Robert Mayse, Clark county; E. E. Hoopes, Clay county; A. L. Hitchins, Coffey county; Ed. E. Reed, Cowley county; George E. Cole, Crawford county; Eben Baldwin, Douglas county; G. S. Knox, Finney county; Nicholas Mayrath, Ford county; E. W. Hume, Franklin county; B. C. Henshaw, Grant county; W. M. Glenn, Greeley county; George M. Munger, Greenwood county; D. W. Stanley, Jackson county; G. Davis, Jefferson county; J. M. Warren, Johnson county; E. W. Baker, Lincoln county; Henry C. Reese, Linn county; T. J. Lawhead, Linn county; G. H. Cooper, Marion county; W. H. Auld, Marshall county; D. M. Ferguson, Miami county; G. W. Roberts, Montgomery county; J. J. Moberly, Montgomery county; W. H. White, Morris county; John Fuller, Nemaha county; E. I. Holley, Neosho county; J. C. Biles, Neosho county; B. F. Herman, Ness county; T. W. Mitchell, Osage county; M. E. Smith, Osborne county; F. P. Maguire, Reno county; S. D. Dyer, Riley county; E. A. Kramer, Rooks county; F. B. Smith, Rush county; J. T. Hastings, Russell county; B. B. Stimmel, Saline county; H. G. Toler, Sedgwick county; Hoyt Andrews, Sherman county; Chas. M. Johnston, Sumner county; C. R. Cantrall, Wilson county; Isaac Hudson, Wilson county.

On motion, a committee consisting of the president, Ed. R. Smith and A. W. Smith was appointed to wait upon the governor, to request that the capitol elevator be run during the evening sessions of the meetings.

The chairman of the committee on program reported that the program as prepared by the secretary had been adopted by the committee as the official program of the meeting.

The meeting adjourned until 7:30 P. M.



## Reports of the Kansas State Board of Agriculture

664

### *Kansas State Board of Agriculture.*

WEDNESDAY EVENING SESSION.

President Hubbard called the meeting to order in Representative hall at eight o'clock P. M.

Prayer was offered by Bishop F. R. Millsbaugh.

Roll-call showed a quorum present.

Secretary Coburn read his report, as follows:

*Gentlemen of the State Board of Agriculture:* There is no adequate report of your secretary except the record found in the files of the office; the letters written and received; the statistics gathered, compiled, edited, and published; the volumes prepared, printed and distributed to whomsoever sought them most or had greatest need, whether in Kansas or Canada, in Mexico or Manitoba, in Scandinavia or Skowhegan, in Africa or Arkansas; the record of salaries paid and oil burned; of requests for red-headed books, of which the supply is always short.

The office work has been done without friction, and, with one exception, by the same force as in the later previous years; in March the lady clerk went with a handsomer man, and, to guard against a possible repetition of this, her place has since been occupied by a clerk who is not a lady.

Appropriations for the Board were not increased by the late legislature beyond those given in previous years, but were restored to equal those made prior to the last two years—a period in which all but the truly good were made to feel what a great money-saver General Retrenchment was when once fairly in the saddle.

Much active effort was put forth by friends of the measure to have the Board's expressed desires in the matter of a state fair substantially supported by the legislature, but without tangible result.

The secretary has not been advised that your earnestly expressed wishes, that the executive council officially take such steps as would make secure to the state the assignment, finish and equipment of the capitol's first-floor rotunda for a permanent exposition of our resources, had been given consideration, favorable or otherwise. It is doubtless true that the council is not in position to so finish or equip this rotunda at this time, but I have no doubt as to its being in their power to officially declare and record, on the second Wednesday of any month, for the benefit of all comers, architects included, that this rotunda is forever set apart for and shall be so finished and equipped as to display artistically, to the best possible advantage, the products of Kansas soil, Kansas industry, and Kansas brains; not alone because it would be a good and proper and profitable thing to do, but, if you please, because formally asked for by the agricultural people of the state, who, as our worthy governor said from this desk one year ago to-night, "have contributed more towards laying these foundations and the building of these massive walls and this magnificent state capitol than all other interests combined." He further well said, at the same time, "you have more interest in this place than any other class of people in the state of Kansas."

Officials of the various state departments have accorded the Board of Agriculture and your secretary the best of treatment, and I am persuaded the Board has in each of them an appreciative friend. The governor and the gentlemen constituting the printing committee have shown their friendly interest in various ways, and all seem glad of opportunity to do as much.

At the request of and by appointment from the governor, your secretary attended as a delegate—the only one present from Kansas—the Farmers' National Congress, in Boston, in October. Upon his motion, one of our valued members, Mr. Thos. M. Potter, is now a vice-president of that body.

The report was adopted unanimously.



## Reports of the Kansas State Board of Agriculture

### *Twelfth Biennial Report.*

665

Gov. W. E. Stanley delivered an address of welcome on behalf of the state, and W. A. S. Bird, city attorney, for the city of Topeka, to which President Hubbard responded.

A paper entitled "The Agricultural Future of Western Kansas" was read by Mr. George R. Allaman, of Wallace, and Dr. Carl Swensson, president of Bethany College, Lindsborg, delivered an address on the subject "The Farmer Boy—the Prince of the Twentieth Century."

Adjourned until 9:30 A. M.

#### THURSDAY MORNING, JANUARY 11, 1900.

The meeting was called to order in Representative hall by President Hubbard, at 9:30 A. M.

Prayer by Rev. A. M. Reynolds, of Westminster Presbyterian Church.

Roll-call by the secretary.

"The Implement Dealer and his Relation to the Farmer" was discussed in a paper by Mr. J. C. Bell, of Erie.

Mr. J. C. Norton, of Morantown, read a paper on "Treatment and Use of the Corn Plant," and Mr. Edwin Snyder, of Oskaloosa, about "The Farmer's Orchard."

Adjourned until 1:30 P. M.

#### THURSDAY AFTERNOON SESSION.

Meeting convened pursuant to adjournment; President Hubbard in the chair.

F. J. Berry, of Chicago, presented a paper entitled "The Horse Situation and its Future," and Dr. Henry Wallace, editor of *Wallaces' Farmer*, of Des Moines, Iowa, treated the subject of "Rotation of Crops."

Adjourned until 7:30 P. M.

#### THURSDAY EVENING SESSION.

Meeting convened pursuant to adjournment; President Hubbard in the chair.

Gen. J. K. Hudson, of Topeka, read a paper on "The Cost to the Pioneer Builders," and the subject "Boys—and Citizens" was treated in an essay by Mrs. Mary T. Gray, of Kansas City, Kan.

Adjourned to convene at 9:30 A. M. Friday.

#### FRIDAY MORNING, JANUARY 12, 1900.

Called to order in Representative hall, at 9:30 o'clock; President Hubbard in the chair.

Prayer by Rev. Charles M. Sheldon.

Roll-call by the secretary.

Dr. D. E. Salmon, chief of the bureau of animal industry, of Washington, D. C., presented an address on the subject "Some Live-stock Problems from an Official Point of View."

The president appointed a committee, consisting of Messrs. Churchill, Potter, Glick, Robison, Doctor Wallace, and F. D. Coburn, to draft a suitable resolution on the work of the United States bureau of animal industry and Doctor Salmon. The committee reported the following, which was unanimously adopted:

*Resolved*, That the Kansas State Board of Agriculture tender to the United States department of agriculture, through Dr. D. E. Salmon, our approval of the efficient services of the bureau of animal industry in the matter of quarantine regulations and inspection, and the preparation and introduction of blackleg and swine-plague vaccine, and we pledge to the department of agriculture our hearty support in furtherance of its work.

Dr. Henry Wallace was unanimously elected an honorary life member of the Board.



## Reports of the Kansas State Board of Agriculture

666

### *Kansas State Board of Agriculture.*

Col. Richard J. Hinton, of Brooklyn, N. Y., read a paper on "Intensive Cultivation, Small Farms, and Irrigation as Security."

Adjourned until 1:30 P. M.

#### FRIDAY AFTERNOON SESSION.

The meeting convened in Representative hall, pursuant to adjournment, by call of President Hubbard, and proceeded at once to the election of officers and members, roll-call being dispensed with. The president appointed as tellers G. M. Munger, J. T. Tredway and W. M. Glenn.

On motion of A. W. Smith, the rules were suspended and the secretary instructed to cast the ballots of the entire board for T. A. Hubbard for president for the ensuing year, and Mr. Hubbard was declared duly elected.

On motion of A. W. Smith, Edwin Taylor was in the same manner elected vice president; and, on motion of G. Davis, Edwin Snyder was elected treasurer for the ensuing year.

On motion of Ed. R. Smith, F. D. Coburn was elected in similar manner to the office of secretary for the ensuing term of two years.

Thos. M. Potter, A. W. Smith, I. L. Diesem and J. H. Churchill were unanimously elected to succeed themselves as members of the Board for the ensuing two years. W. M. Glenn placed George R. Allaman, of Wallace, in nomination to succeed George W. Crane, of Sheridan county. I. L. Diesem placed in nomination J. H. Sayles, of Decatur county. The ballots being counted, thirty-six were found for J. H. Sayles and six for G. R. Allaman. Mr. Sayles was declared duly elected, and, on motion of W. M. Glenn, the election was made unanimous.

Ed. R. Smith offered the following resolution, and moved its adoption:

WHEREAS, This Board is not advised of any action by the executive council in the matter of assigning or assuring the first-floor rotunda of the capitol building for a permanent agricultural, horticultural and mineral display of the state's resources under auspices of the Board, as urged heretofore in formal resolutions by us; and

WHEREAS, The producers of Kansas have urgently expressed themselves through our Board, their legally authorized mouthpiece, as earnestly desiring this modest, yet very important, recognition of their interests: be it

*Resolved*, That the president of the Board appoint a committee of five, who shall call upon each member of the executive council during our present meeting, and urge upon his attention our earnest desire in the matter of this proposed artistic, permanent Kansas exposition, and request his active support to its early promotion and settlement; also, in the matter of providing our executive officers with as comfortable, convenient and accessible quarters as are provided for the heads of other departments; further,

*Resolved*, That Governor Stanley and Secretary of State Clark, who are *ex officio* members of this Board, are hereby appointed a standing committee to urge the interests of the Board in general, and in the matter of a rotunda museum and better office quarters in particular, upon the honorable executive council.

*Resolved*, That the secretary of the Board is hereby instructed to furnish Governor Stanley and Secretary of State Clark each with a copy of the preambles and resolutions.

The resolutions were unanimously adopted, and the president appointed Ed. R. Smith, J. W. Robison, Geo. W. Hanna, F. D. Coburn and E. Harrington members of the committee called for in the resolution.

Ed. R. Smith offered the following resolution, which was unanimously adopted:

*Resolved*, That the State Board of Agriculture heartily indorses the resolution of the Improved Stock-breeders' Association of Kansas in recommending to Governor Stanley O. P. Updegraff, of Topeka, for appointment as a member of the Kansas Live-stock Sanitary Commission.

On motion of G. W. Glick, all persons present interested in the subject-matter of any of the papers presented were invited to take part in their discussion.



## Reports of the Kansas State Board of Agriculture

### *Twelfth Biennial Report.*

667

Emerson T. Abbott read the following resolution, which, on motion of J. T. Tredway, was unanimously adopted:

WHEREAS, There is a body known as the National Pure Food and Drug Congress, composed of representatives of the various productive industries in the United States; and

WHEREAS, The Kansas State Board of Agriculture believes that every man who pays money for an article is entitled to know what he is getting, and to get what he calls for: therefore,

*Resolved*, That we indorse the pure-food bill, known as the Brosius bill, which is backed by the National Pure Food and Drug Congress, and that we respectfully urge upon the national representatives, and especially upon the members of congress from the state of Kansas, the importance of giving this bill their hearty support.

*Resolved*, That a copy of these resolutions be given to the press, with the request that every paper in Kansas copy them.

*Resolved*, That the secretary be ordered to engross a copy of this resolution, and forward same to Senator Harris and Congressman Bailey.

On motion of G. W. Glick, Congressman W. J. Bailey was named as the delegate from the Kansas State Board of Agriculture to the pure-food congress.

Prof. D. H. Otis, of Manhattan, presented a paper on "Dairy Expansion."

Adjourned until 7:30 P. M.

#### FRIDAY EVENING SESSION.

Called to order at 7:30 by President Hubbard.

Prof. S. J. Hunter, of the state university, delivered a lecture on "Alfalfa Culture and Insect Life," illustrated by stereopticon views, and Miss Minnie A. Stoner, of Manhattan, read a paper on the subject "Girls at the Agricultural College."

On motion of Ed. R. Smith, a vote of thanks was tendered to the speakers on the program of the meeting.

On motion of A. W. Smith, a vote of thanks was given to the citizens of Topeka by the State Board of Agriculture for the generous and kind hospitality which they have extended from year to year.

Adjourned *sine die*.

#### MEETING OF THE NEW BOARD.

JANUARY 13, 1900.

The Board was called to order in the secretary's office at 9:30 A. M., by President Hubbard.

Roll called; quorum declared present.

The oath of office was administered to the newly elected officers and members present by Notary E. W. Longshore.

Minutes of the last meeting were read and approved.

The appointive officers of the Board for 1899 were continued.

Upon motion, the chair was authorized and instructed to appoint all standing committees for the ensuing year, which was done, as follows:

Committee on Program and Printing: Sec. F. D. Coburn, Geo. W. Glick, and Ed. R. Smith.

Committee on Needed Legislation: Thos. M. Potter, J. H. Churchill, J. T. Cooper, Edwin Taylor, Geo. W. Hanna, A. W. Smith, and Chas. E. Sutton.

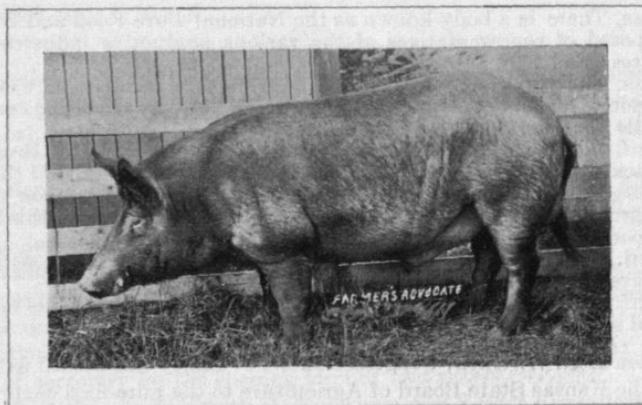
On motion, the Board directed that hereafter the remainder of the afternoon following the election of officers and members be set apart in the program for a "query box," instead of the customary address.

Adjourned.

## Reports of the Kansas State Board of Agriculture

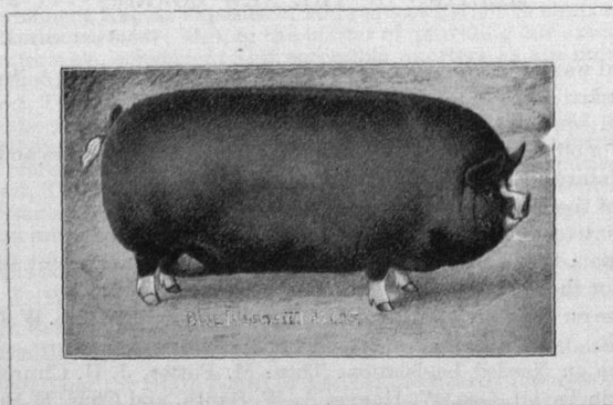
668

*Kansas State Board of Agriculture.*



The two illustrations on this page quite fairly represent types of two extremes in swine breeding. The upper one is an excellent showing, from a photograph, of a young Tamworth boar, the first-prize winner in his class at the Toronto and London, Canada, shows in 1900. He belongs to the sort doted on by those who insist that most hogs of other breeds reared in the United States, such as Poland-Chinas, Berkshires, Chester Whites, and Durocs, make a meat product unprofitable, unpalatable and unwholesome because too fat.

The lower illustration is of a Kansas-reared Berkshire, found by competitors well-nigh invincible in the show-ring. She belongs to a quick-growing, easy-fat-tening type that attains heavy weights on Kansas corn and alfalfa.





POPULATION  
STATISTICS  
1890-1900

PART V.  
GENERAL STATISTICS, 1899-1900.

## Reports of the Kansas State Board of Agriculture



FIVE SOUTHWESTERN KANSAS HEREFORDS.



## Reports of the Kansas State Board of Agriculture

### POPULATION, ACREAGES, PRODUCTION, ASSESSED VALUATION, ETC.

#### ALLEN COUNTY.

Organized in 1855; area, 504 square miles; population, 19,923; rank in population, 28; assessed valuation, \$5,636,323; miles of railroad, main track, 83.36; county-seat, Iola, population, 6,153.

#### POPULATION AND VALUATION.—ALLEN COUNTY.

Table showing total population, by townships and cities, for 1899 and 1900, and the assessed valuation of the municipal townships and cities for 1900.

Townships and cities.	Population.		Assessed valuation of property.				
	1899.	1900.	Land.	Personal	City lots.	Railroad	Total.
The county .....	17,483	19,923	\$2,912,801	\$1,057,755	\$1,089,595	\$576 172	\$5,636,323
Carlyle twp. ....	636	662	\$142,250	\$45,425	.....	\$15,360	\$233,035
Cottage Grove twp. ....	748	737	175,780	45,840	.....	21,820	243,440
Deer Creek twp. ....	542	559	187,545	54,120	.....	132	241,797
La Harpe city. ....	592	636	.....	.....	.....	.....	.....
Lanouville city. ....	215	353	.....	.....	.....	.....	.....
Gas City. ....	107	318	367,240	132,685	\$136,275	60,272	696,472
Elm twp. ....	893	830	.....	.....	.....	.....	.....
Savonburg city. ....	223	261	.....	.....	.....	.....	.....
Elsmore city. ....	211	210	333,125	82,090	35,340	56,280	506,835
Elsmore twp. ....	1,326	1,204	.....	.....	.....	.....	.....
Geneva twp. ....	543	575	151,870	42,710	4,750	19,551	218,881
Humboldt city. ....	1,682	1,741	148,380	78,890	158,825	51,043	437,138
Humboldt twp. ....	436	493	.....	.....	.....	.....	.....
Iola city. ....	4,112	6,153	452,346	360,850	710,890	119,480	1,643,566
Iola twp. ....	1,468	1,365	.....	.....	.....	.....	.....
Logan twp. ....	494	462	153,080	18,250	.....	48,699	220,029
Moran city. ....	486	511	333,475	81,745	43,515	109,984	568,719
Marmaton twp. ....	1,012	1,036	.....	.....	.....	.....	.....
Osage twp. ....	917	964	237,750	57,860	.....	43,551	339,161
Salem twp. ....	840	833	229,960	57,290	.....	.....	287,250

#### FARM AND CROP STATISTICS.—ALLEN COUNTY.

Table showing acres, product and value of field crops in the county for 1899 and 1900.

Crops.	1899.			1900.		
	Acres.	Product.	Value.	Acres.	Product.	Value.
Winter wheat. .... bu.	5,739	80,346	\$44,993 76	3,560	74,760	\$46,351 20
Spring wheat. .... bu.	20	140	70 00	.....	.....	.....
Corn. .... bu.	87,631	1,664,989	416,247 25	84,783	2,034,792	590,089 68
Oats. .... bu.	4,557	95,697	20,096 37	7,688	184,512	46,128 00
Rye. .... bu.	143	2,145	1,072 50	42	798	399 00
Barley. .... bu.	.....	.....	.....	.....	.....	.....
Buckwheat. .... bu.	12	144	93 60	18	180	135 00
Irish potatoes. .... bu.	717	50,907	21,380 94	871	69,680	25,084 80
Sweet potatoes. .... bu.	5	500	265 00	4	600	360 00
Castor-beans. .... bu.	10	80	72 00	.....	.....	.....
Cotton. .... lbs.	.....	.....	.....	.....	.....	.....
Flax. .... bu.	16,790	117,530	105,777 00	16,479	131,832	171,381 60

(671)



## Reports of the Kansas State Board of Agriculture

672

### Kansas State Board of Agriculture.

#### FARM AND CROP STATISTICS.—ALLEN COUNTY—*Concluded.*

Crops.	1899.			1900.		
	Acres.	Product.	Value.	Acres.	Product.	Value.
Hemp.....lbs.						
Tobacco.....lbs.						
Broom-corn.....lbs.	1,602	600,750	\$19,524 37	1,832	1,099,200	\$43,968 00
Millet & hungarian.....tons	8,350	16,700	50,100 00	8,707	19,591	58,773 00
Sorghum:						
For syrup or sugar, gals.	172	6,538	2,091 52	165	5,445	1,851 30
For forage or grain.....	532		3,724 00	1,024		6,144 00
Milo maize.....tons				12	36	108 00
Kafir-corn.....tons	8,593	30,076	75,190 00	6,761	20,283	60,849 00
Jerusalem corn.....tons						
Timothy.....tons	6,605			5,546		
Clover.....tons	2,702			3,203		
Blue-grass.....tons	1,601	* 10,345	43,966 25	1,389	† 6,317	30,005 75
Alfalfa.....tons	466			218		
Orchard-grass.....tons	7			16		
Other tame grasses.....tons	269			170		
Prairie-grass fenced, tons	62,818	24,798	74,394 00	50,465	18,845	65,957 50
Totals.....	209,341		\$879,058 56	192,963		\$1,147,585 83

Wheat on hand March 1, 1899, 13,801 bushels; March 1, 1900, 10,707 bushels.

Corn on hand March 1, 1899, 451,506 bushels; March 1, 1900, 288,292 bushels.

\* Product of 1898. † Product of 1899.

#### SUMMARY.—ALLEN COUNTY.

Showing quantity and value of farm products, years ending March 1, 1899, and March 1, 1900.

Products.	1899.		1900.	
	Quantity	Value.	Quantity	Value.
Field crops.....acres	209,341	\$879,058 56	192,963	\$1,147,585 83
Animals slaughtered and sold for slaughter.....		382,405 00		412,466 00
Poultry and eggs sold.....		63,067 00		68,265 00
Wool clip.....lbs.	1,831	244 65	4,605	7-6 80
Cheese.....lbs.	55,615	5,005 35	48,940	4,894 00
Butter.....lbs.	420,997	54,301 67	395,505	61,759 70
Milk sold.....		4,071 00		8,765 00
Garden products marketed.....		5,823 00		10,751 00
Horticultural products.....		1,961 00		890 00
Honey and beeswax.....lbs.	2,550	382 75	3,960	594 00
Wine manufactured.....gals.	400	300 00	962	721 50
Wood marketed.....		299 00		144 00
Totals.....		\$1,396,918 98		\$1,717,572 83

#### LIVE STOCK.—ALLEN COUNTY.

Table showing the number, value and mortality of live stock for 1899 and 1900.

Live stock.	1899.		1900.		Mortality.	
	Number.	Value.	Number.	Value.	1899.	1900.
Horses.....	8,726	\$349,040 00	8,284	\$414,200 00	70	291
Mules and asses.....	1,103	50,738 00	1,155	69,300 00	5	16
Milch cows.....	7,813	250,016 00	7,428	245,124 00	61	105
Other cattle.....	18,465	480,090 00	17,618	405,214 00	219	389
Sheep.....	735	2,205 00	1,093	3,279 00	7	6
Swine.....	25,853	129,265 00	20,752	124,512 00	2,827	970
Total.....	62,695	\$1,261,354 00	56,330	\$1,261,629 00	3,189	1,777

Number of dogs in county March 1, 1899, 1,923; March 1, 1900, 1,975.

Number of sheep killed by dogs, year ending March 1, 1899, 2.

Number of sheep killed by wolves, year ending March 1, 1899, 2.



## Reports of the Kansas State Board of Agriculture

### Twelfth Biennial Report.—Part V.

673

#### ANDERSON COUNTY.

Organized in 1855; area, 576 square miles; population, 13,988; rank in population, 47; assessed valuation, \$3,480,263; miles of railroad, main track, 130.77; county-seat, Garnett, population, 2,118.

#### POPULATION AND VALUATION.—ANDERSON COUNTY.

Table showing total population, by townships and cities, for 1899 and 1900, and the assessed valuation of the municipal townships and cities for 1900.

Townships and cities.	Population.		Assessed valuation of property.				
	1899.	1900.	Land.	Personal	City lots.	Railroad	Total.
The county.....	14,227	13,988	\$1,802,845	\$591,255	\$358,590	\$727,573	\$3,480,263
Indian Creek twp..	677	677	\$128,130	\$12,835	\$725	\$34,248	\$175,938
Jackson twp.....	835	768	117,390	38,770	1,510	43,961	201,631
Lincoln twp.....	777	786	151,945	22,830	1,575	32,790	209,140
Lone Elm twp.....	885	898	143,890	43,385	5,005	27,145	219,425
Garnett city.....	2,293	2,118	133,170	96,140	228,085	106,730	564,125
Monroe twp.....	872	882	3,000				
Colony city.....	504	494	1,079	35,035	38,155	86,395	267,705
Ozark twp.....	502	585	107,660	44,890		28,969	181,519
Putnam twp.....		1,226	220,720	81,720	6,060	34,335	342,835
Reeder twp.....	1,188	578	178,815	52,915	23,250	119,461	374,441
Kincaid city.....	366	354	1,166	89,025	18,355		107,380
Rich twp.....	844	812	518	50,805	30,730	29,980	136,694
Union twp.....		531					
Greeley city.....	463	446	705	93,540	15,085	4,225	84,327
Walker twp.....	271	259		22,700	4,325	43,436	199,626
Washington twp...		605	129,165	75,865	15,695	60,597	302,627
Welda twp.....		834					
Westphalia twp....	1,224	1,180	150,470				

#### FARM AND CROP STATISTICS.—ANDERSON COUNTY.

Table showing acres, product and value of field crops in the county for 1899 and 1900.

Crops.	1899.			1900.		
	Acres.	Product.	Value.	Acres.	Product.	Value.
Winter wheat.....bu.	3,694	55,410	\$32,691 90	1,796	30,532	\$19,235 16
Spring wheat.....bu.						
Corn.....bu.	97,274	2,140,028	535,007 00	92,062	2,025,364	587,355 56
Oats.....bu.	3,271	65,420	13,738 20	5,538	155,064	37,215 86
Rye.....bu.	237	4,977	2,140 11	74	1,480	740 00
Barley.....bu.						
Buckwheat.....bu.	2	30	19 50			
Irish potatoes.....bu.	553	40,369	17,358 67	736	67,712	23,699 20
Sweet potatoes.....bu.	3	240	153 60	17	1,955	782 00
Castor-beans.....bu.				5	40	40 00
Cotton.....lbs.						
Flax.....bu.	14,141	98,987	89,088 30	14,175	127,575	165,847 50
Hemp.....lbs.						
Tobacco.....lbs.	1	250	25 00	1	200	20 00
Broom-corn.....lbs.	137	54,800	1,781 00	30	18,000	720 00
Millet & hungarian..tons	1,950	4,388	13,164 00	1,802	4,500	18,020 00
Sorghum:						
For syrup or sugar, gals.	143	6,864	2,196 48	183	10,980	3,733 20
For forage or grain....	1,782		10,692 00	3,012		15,060 00
Milo maize.....tons	32	80	240 00	5	23	69 00
Kafir-corn.....tons	9,049	36,196	90,490 00	7,128	32,076	96,228 00
Jerusalem corn.....tons				74	296	888 00
Timothy.....tons	9,375			9,352		
Clover.....tons	7,270			6,511		
Blue-grass.....tons	2,146	* 10,942	46,503 50	1,713	† 11,465	54,458 75
Alfalfa.....tons	133			141		
Orchard-grass.....tons	50			5		
Other tame grasses..tons	1,211			173		
Prairie-grass fenced, tons	61,763	25,196	75,588 00	73,073	31,595	110,582 50
Totals.....	214,217		\$930,877 26	217,606		\$1,134,694 23

Wheat on hand March 1, 1899, 3,085 bushels; March 1, 1900, 5,624 bushels.  
Corn on hand March 1, 1899, 417,773 bushels; March 1, 1900, 355,525 bushels.  
\* Product of 1898. † Product of 1899.



## Reports of the Kansas State Board of Agriculture

674

### Kansas State Board of Agriculture.

#### SUMMARY.—ANDERSON COUNTY.

Showing quantity and value of farm products, years ending March 1, 1899, and March 1, 1900.

Products.	1899.		1900.	
	Quantity	Value.	Quantity	Value.
Field crops .....	214,217	\$930,877 26	217,606	\$1,134,694 23
Animals slaughtered and sold for slaughter .....		449,310 00		531,920 00
Poultry and eggs sold .....		49,702 00		55,105 00
Wool clip .....			3,515	562 40
Cheese .....	2,575	386 25	1,500	150 00
Butter .....	1,600	144 00		
Milk sold .....	377,526	47,629 56	385,810	58,972 65
Green products marketed .....		7,588 00		8,367 00
Horticultural products .....		1,395 10		2,729 00
Honey and beeswax .....		589 00		251 00
Wine manufactured .....	3,783	568 95	2,288	347 40
Wood marketed .....	577	432 75		216 00
Totals .....		1,264 00		3,886 00
		\$1,489,884 77		\$1,797,180 68

#### LIVE STOCK.—ANDERSON COUNTY.

Table showing the number, value and mortality of live stock for 1899 and 1900.

Live stock.	1899.		1900.		Mortality.	
	Number.	Value.	Number.	Value.	1899.	1900.
Horses .....	8,701	\$365,442 00	8,091	\$404,550 00	129	380
Mules and asses .....	1,301	65,050 00	1,339	80,340 00	21	25
Milch cows .....	8,876	275,156 00	8,353	275,649 00	92	199
Other cattle .....	20,300	527,800 00	24,478	611,950 00	285	434
Sheep .....	1,013	3,039 00	1,352	4,053 00	10	4
Swine .....	28,645	171,870 00	29,967	179,802 00	3,975	1,329
Totals .....	68,836	\$1,408,357 00	73,580	\$1,556,347 00	4,512	2,371

Number of dogs in county March 1, 1899, 1,955; March 1, 1900, 2,005.

Number of sheep killed by dogs, year ending March 1, 1899, 1; March 1, 1900, 6.

Number of sheep killed by wolves, year ending March 1, 1899, 5; March 1, 1900, 11.

#### ATCHISON COUNTY.

Organized in 1855; area, 423 square miles; population, 30,369; rank in population, 8; assessed valuation, \$4,921,338; miles of railroad, main track, 90.54; county-seat, Atchison, population, 16,617.

#### POPULATION AND VALUATION.—ATCHISON COUNTY.

Table showing total population, by townships and cities, for 1899 and 1900, and the assessed valuation of the municipal townships and cities for 1900.

Townships and cities.	Population.		Assessed valuation of property.				
	1899.	1900.	Land.	Personal	City lots.	Railroad	Total.
The county .....	30,369	30,369	\$1,808,041	\$694,480	\$1,597,390	\$821,427	\$4,874,248
Benton twp. ....	2,060	2,060	\$248,476	\$46,830	\$31,745	\$43,885	\$370,936
Center twp. ....	1,647	1,647	213,911	26,597		99,395	339,903
Grasshopper twp. ....	1,897	1,897	257,671	31,730	20,280	43,566	353,247
Kapioma twp. ....	1,107	1,107	143,083	19,235		32,378	194,691
Lancaster twp. ....	1,680	1,680	285,952	44,120	21,925	76,640	428,637
Mount Pleasant tp. ....	1,697	1,697	189,168	14,010		109,225	312,403
Shannon twp. ....	2,387	2,387	361,291	31,393		144,931	537,615
Walnut twp. ....	1,277	1,277	108,489	11,880		143,942	264,311
Atchison city:							
1st ward .....	1,629	1,629					
2d ward .....	2,516	2,516					
3d ward .....	4,288	4,288					
4th ward .....	3,084	3,084					
5th ward .....	5,100	5,100					
	16,617	16,617*		468,690	1,476,350	127,465	2,072,505

\* Population for 1899.



## Reports of the Kansas State Board of Agriculture

### Twelfth Biennial Report.—Part V.

675

#### FARM AND CROP STATISTICS.—ATCHISON COUNTY.

Table showing acres, product and value of field crops in the county for 1899 and 1900.

Crops.	1899.			1900.		
	Acres.	Product.	Value.	Acres.	Product.	Value.
Winter wheat.....bu.	25,022	225,198	\$135,118 80	18,906	376,120	\$225,672 00
Spring wheat.....bu.	78	390	214 50	15	180	99 00
Corn.....bu.	80,809	2,747,506	686,876 50	67,693	1,760,018	528,005 40
Oats.....bu.	14,209	369,434	77,581 14	19,409	543,452	108,690 40
Rye.....bu.	154	2,618	1,256 64	196	4,508	1,938 44
Barley.....bu.	31	899	359 60	25	700	210 00
Buckwheat.....bu.	1	8	5 20	4	40	30 00
Irish potatoes.....bu.	1,594	191,280	42,081 60	1,690	118,300	36,673 00
Sweet potatoes.....bu.	88	11,000	4,730 00	72	5,328	2,131 20
Castor-beans.....bu.						
Cotton.....lbs.	12	3,000	150 00			
Flax.....bu.	1,144	9,152	8,236 80	730	7,300	9,490 00
Hemp.....lbs.	2	800	40 00	2	400	20 00
Tobacco.....lbs.	5			1	200	20 00
Broom-corn.....lbs.	20	10,000	325 00	16	9,600	384 00
Millet & hungarian..tons	1,393	3,134	9,402 00	1,461	2,922	11,688 00
Sorghum:						
For syrup or sugar, gals.	141	8,460	2,707 20	101	7,070	2,403 80
For forage or grain.....	923		5,538 00	1,089		6,534 00
Milo maize.....tons	57	114	285 00			
Kafir-corn.....tons	899	3,596	8,990 00	1,117	5,027	20,108 00
Jerusalem corn.....tons						
Timothy.....tons	24,254			24,039		
Clover.....tons	7,343			9,553		
Blue-grass.....tons	18,422	* 15,442	65,628 50	19,957	† 19,516	92,701 00
Alfalfa.....tons	57			53		
Orchard-grass.....tons	31			9		
Other tame grasses.....tons	353			1,439		
Prairie-grass fenced, tons	6,594	5,515	16,545 00	5,354	4,510	15,785 00
Totals.....	183,636		\$1,066,071 48	172,831		\$1,062,583 24

Wheat on hand March 1, 1899, 24,687 bushels; March 1, 1900, 20,749 bushels.  
Corn on hand March 1, 1899, 468,840 bushels; March 1, 1900, 613,992 bushels.

\*Product of 1898. †Product of 1899.

#### SUMMARY.—ATCHISON COUNTY.

Showing quantity and value of farm products, years ending March 1, 1899, and March 1, 1900.

Products.	1899.		1900.	
	Quantity	Value.	Quantity	Value.
Field crops.....acres	183,636	\$1,066 071 48	172,831	\$1,062,583 24
Animals slaughtered and sold for slaughter.....		530,917 00		393,667 00
Poultry and eggs sold.....		34,970 00		40,551 00
Wool clip.....lbs.	880	132 00	3,310	529 60
Cheese.....lbs.	27,900	2,511 00	9,900	990 00
Butter.....lbs.	328,856	44,954 68	410,364	63,230 46
Milk sold.....		12,445 00		11,137 00
Garden products marketed.....		11,089 00		10,702 00
Horticultural products.....		7,028 00		9,799 00
Honey and beeswax.....lbs.	7,117	1,071 55	12,217	1,835 95
Wine manufactured.....gals.	3,120	2,340 00	2,860	2,145 00
Wood marketed.....		5,938 00		6,365 00
Totals.....		\$1,719,467 71		\$1,603,535 25



## Reports of the Kansas State Board of Agriculture

676

### Kansas State Board of Agriculture.

#### LIVE STOCK.—ATCHISON COUNTY.

Table showing the number, value and mortality of live stock for 1899 and 1900.

Live stock.	1899.		1900.		Mortality.	
	Number.	Value.	Number.	Value.	1899.	1900.
Horses .....	6,245	\$287,270 00	5,879	\$293,950 00	104	100
Mules and asses .....	1,241	63,291 00	1,027	61,620 00	19	15
Milch cows .....	7,338	249,492 00	7,153	236,049 00	164	129
Other cattle .....	11,689	327,292 00	11,490	310,230 00	512	397
Sheep .....	140	490 00	548	1,644 00	66	21
Swine .....	23,322	139,932 00	21,677	130,062 00	2,751	1,654
Totals .....	49,975	\$1,067,767 00	47,774	\$1,033,555 00	3,616	2,316

Number of dogs in county March 1, 1899, 1,789; March 1, 1900, 1,743.

Number of sheep killed by dogs, year ending March 1, 1899, 1; March 1, 1900, 6.

Number of sheep killed by wolves, year ending March 1, 1900, 10.

#### BARBER COUNTY.

Organized in 1873; area, 1,134 square miles; population, 6,430; rank in population, 71; assessed valuation, \$1,805,302; miles of railroad, main track, 44.87; county-seat, Medicine Lodge, population, 946.

#### POPULATION AND VALUATION.—BARBER COUNTY.

Table showing total population, by townships and cities, for 1899 and 1900, and the assessed valuation of the municipal townships and cities for 1900.

Townships and cities.	Population.		Assessed valuation of property.				
	1899.	1900.	Lands.	Personal	City lots.	Railroad	Total.
The county .....	6,614	6,340	\$983,742	\$534,550	\$90,337	\$196,673	\$1,805,302
Ætna twp. ....	89	66	\$83,400	\$20,064	\$377		\$103,841
Cedar twp. ....	301	315	38,250	16,126		\$7,506	61,882
Deerhead twp. ....	86	71	44,885	7,678	21		52,584
Eagle twp. ....	207	184	70,110	28,842			98,952
Elm Mills twp. ....	244	241	49,910	19,294			69,204
Elwood twp. ....	275	279	90,900	48,107	204		139,211
Hazelton city. ....	150	164					
Hazelton twp. ....	406	294	40,161	25,084	8,410	58,902	132,557
Kiowa city. ....	934						
Kiowa twp. ....	182	9 86	53,070	68,767	22,959	39,056	183,852
Lake City twp. ....	198	183	33,735	44,297	1,618		79,650
McAdoo twp. ....	163	106	30,870	12,809			43,679
Medicine Lodge city. ....	1,031	946	110,844	72,431	53,591	40,116	276,982
Medicine Lodge twp. ....	560	671					
Mingona twp. ....	249	254	55,055	23,159	349		78,563
Moore twp. ....	310	316	45,645	41,122		165	86,932
Nippawalla twp. ....	214	216	53,765	24,035			77,800
Sharon twp. ....	595	619	70,491	29,299	1,949	26,311	128,050
Sun City twp. ....	111	123	33,250	7,893	672		41,815
Turkey Creek twp. ....	160	185	40,275	26,103			66,378
Valley twp. ....	209	211	39,126	19,440	187	24,617	83,370



## Reports of the Kansas State Board of Agriculture

### Twelfth Biennial Report.—Part V.

677

#### FARM AND CROP STATISTICS.—BARBER COUNTY.

Table showing acres, product and value of field crops in the county for 1899 and 1900.

Crops.	1899.			1900.		
	Acres.	Product.	Value.	Acres.	Product.	Value.
Winter wheat.....bu.	15,191	136,719	\$73,828 26	7,858	141,644	\$75,071 33
Spring wheat.....bu.						
Corn.....bu.	43,288	865,760	190,467 20	57,833	1,098,827	296,553 29
Oats.....bu.	1,190	33,320	5,997 60	2,789	89,248	17,849 60
Rye.....bu.	715	7,865	3,146 00	1,814	30,838	11,410 06
Barley.....bu.	685	12,330	2,959 20	298	8,046	2,011 50
Buckwheat.....bu.						
Irish potatoes.....bu.	78	5,460	3,003 00	112	7,840	3,920 00
Sweet potatoes.....bu.	15	1,350	742 50	11	660	330 00
Castor-beans.....bu.						
Cotton.....lbs.						
Flax.....bu.						
Hemp.....lbs.						
Tobacco.....lbs.						
Broom-corn.....lbs.						
Millet & hungarian, tons	862	2,155	6,465 00	1,895	3,780	11,340 00
Sorghum:						
For syrup or sugar, gals.	314	18,840	6,028 80	168	8,400	2,856 00
For forage or grain.....	16,597		49,791 00	16,577		66,308 00
Milo maze.....tons	39	117	234 00	41	123	308 00
Kafir-corn.....tons	40,073	120,219	240,438 00	30,062	90,186	225,465 00
Jerusalem corn.....tons				20	50	125 00
Timothy.....tons						
Clover.....tons						
Blue-grass.....tons		* 21,823	92,747 75	38	† 5,642	26,799 50
Alfalfa.....tons	841			648		
Orchard-grass.....tons				225		
Other tame grasses, tons				92,852	3,204	11,214 00
Prairie-grass fenced, tons	69,684	3,368	10,104 00			
Totals.....	189,572		\$685,952 31	213,241		\$751,591 27

Wheat on hand March 1, 1899, 18,597 bushels; March 1, 1900, 1,760 bushels.

Corn on hand March 1, 1899, 80,000 bushels; March 1, 1900, 137,350 bushels.

\* Product of 1898. † Product of 1899.

#### SUMMARY.—BARBER COUNTY.

Showing quantity and value of farm products, years ending March 1, 1899, and March 1, 1900.

Products.	1899.		1900.	
	Quantity	Value.	Quantity	Value.
Field crops.....acres	189,572	\$685,952 31	213,241	\$751,591 27
Animals slaughtered and sold for slaughter.....		294,868 00		442,170 00
Poultry and eggs sold.....		16,703 00		14,253 00
Wool clip.....lbs.	10,500	1,575 00	11,500	1,840 00
Cheese.....lbs.	2,492	224 28	2,360	236 00
Butter.....lbs.	93,161	10,247 71	91,260	12,873 90
Milk sold.....		1,105 00		1,643 00
Garden products marketed.....		3,436 00		4,202 00
Horticultural products.....		497 00		3,633 00
Honey and beeswax.....lbs.	174	26 10		
Wine manufactured.....gals.	165	123 75	300	225 00
Wood marketed.....		555 00		531 00
Totals.....		\$1,015,313 15		\$1,233,198 17



## Reports of the Kansas State Board of Agriculture

678

### Kansas State Board of Agriculture.

#### LIVE STOCK.—BARBER COUNTY.

Table showing the number, value and mortality of live stock for 1899 and 1900.

Live stock.	1899.		1900.		Mortality.	
	Number.	Value.	Number.	Value.	1899.	1900.
Horses.....	5,233	\$188,388 00	5,583	\$279,150 00	122	46
Mules and asses.....	915	35,685 00	1,022	61,320 00	13	4
Milch cows.....	3,263	97,890 00	3,332	109,956 00	56	40
Other cattle.....	65,806	1,710,956 00	58,190	1,396,560 00	1,052	336
Sheep.....	3,021	9,063 00	634	1,902 00	.....	6
Swine.....	7,252	36,260 00	7,347	44,082 00	256	128
Totals.....	85,490	\$2,078,242 00	76,108	\$1,892,970 00	1,499	569

Number of dogs in county March 1, 1899, 921; March 1, 1900, 1,003.  
Number of sheep killed by wolves, year ending March 1, 1900, 40.

#### BARTON COUNTY.

Organized in 1872; area, 900 square miles; population, 13,179; rank in population, 49; assessed valuation, \$3,950,974; miles of railroad, main track, 94.01; county-seat, Great Bend, population, 2,495.

#### POPULATION AND VALUATION.—BARTON COUNTY.

Table showing total population, by townships and cities, for 1899 and 1900, and the assessed valuation of the municipal townships and cities for 1900.

Townships and cities.	Population.		Assessed valuation of property.				
	1899.	1900.	Land.	Personal	City lots.	Railroad	Total.
The county.....	13,601	13,179	\$2,307,357	\$495,740	\$457,548	\$690,329	\$3,950,974
Albion twp.....	288	304	\$81,483	\$7,872	.....	\$10,822	\$100,177
Beaver twp.....	382	361	94,521	5,379	.....	.....	99,900
Buffalo twp.....	362	359	106,893	15,511	\$1,396	26,946	150,746
Cheyenne twp.....	623	607	153,530	14,093	.....	59,204	206,827
Clarence twp.....	319	305	101,580	18,797	.....	.....	120,377
Cleveland twp.....	353	346	93,953	6,984	.....	.....	100,937
Comanche twp.....	702	691	138,620	21,479	.....	.....	160,099
Enreka twp.....	297	312	98,431	10,538	.....	35,094	144,063
Fairview twp.....	291	321	85,780	8,142	.....	.....	93,922
Grant twp.....	314	330	85,143	2,005	8,245	19,280	114,673
Great Bend city.....	2,928	2,495	.....	.....	.....	.....	.....
Great Bend twp.....	374	411	130,444	162,690	268,932	127,219	689,285
Hoisington city.....	625	796	.....	.....	.....	.....	.....
Homestead twp.....	406	390	156,288	44,487	71,957	73,581	346,313
Claffin city.....	*	225	.....	.....	.....	.....	.....
Independent twp.....	849	340	100,501	26,331	12,824	15,137	154,793
Ellinwood city.....	767	734	.....	.....	.....	.....	.....
Lakin twp.....	748	697	211,693	64,348	70,110	152,481	498,632
Liberty twp.....	433	472	91,582	11,542	.....	76,674	179,798
Logan twp.....	476	479	118,075	8,093	.....	23,567	149,735
Pawnee Rock city.....	191	207	99,071	17,351	20,287	45,460	182,149
Pawnee Rock twp.....	351	542	.....	.....	.....	.....	.....
South Bend twp.....	347	402	99,949	12,889	.....	.....	112,838
Union twp.....	242	288	74,713	6,989	.....	.....	81,702
Walnut twp.....	597	579	102,179	26,426	3,817	44,864	177,286
Wheatland twp.....	336	385	82,928	3,794	.....	.....	86,722

\* Population not returned separately from township in 1899.



## Reports of the Kansas State Board of Agriculture

### Twelfth Biennial Report.—Part V.

679

#### FARM AND CROP STATISTICS.—BARTON COUNTY.

Table showing acres, product and value of field crops in the county for 1899 and 1900.

Crops.	1899.			1900.		
	Acres.	Product.	Value.	Acres.	Product.	Value.
Winter wheat.....bu.	235,272	1,882,176	\$997,553 28	253,974	5,079,480	\$2,692,324 40
Spring wheat.....bu.	285	1,425	712 50	156	1,872	936 00
Corn.....bu.	48,079	1,250,054	275,011 88	32,649	281,192	96,641 04
Oats.....bu.	2,778	69,450	15,279 00	2,942	61,008	17,082 24
Rye.....bu.	4,206	50,472	18,674 64	2,496	42,432	15,669 84
Barley.....bu.	9,616	250,016	55,003 52	9,744	204,024	69,572 16
Buckwheat.....bu.	2	16	10 40	11	110	82 50
Irish potatoes.....bu.	640	71,680	32,972 80	745	43,210	20,308 70
Sweet potatoes.....bu.	4	720	482 40	5	235	152 75
Castor-beans.....bu.						
Cotton.....lbs.						
Flax.....bu.						
Hemp.....lbs.						
Tobacco.....lbs.						
Broom-corn.....lbs.	50	30,000	975 00	30	9,000	270 00
Millet & hungarian.....tons	1,051	2,102	6,306 00	1,744	2,616	9,156 00
Sorghum:						
Forsyrup or sugar, gals.	113	5,650	1,808 00	5	250	85 00
For forage or grain.....	5,557		38,899 00	5,340		32,040 00
Milo maize.....tons	184	736	1,472 00	233	658	1,974 00
Kafir-corn.....tons	6,405	25,620	64,050 00	5,585	13,963	41,889 00
Jerusalem corn.....tons	1	4	10 00			
Timothy.....tons						
Clover.....tons						
Blue-grass.....tons						
Alfalfa.....tons	1,763	* 5,796	24,633 00	1,976	† 12,816	60,876 00
Orchard-grass.....tons						
Other tame grasses.....tons						
Prairie-grass fenced, tons	48,248	12,743	38,229 00	77,905	18,864	66,024 00
Totals.....	364,254		\$1,572,082 42	395,221		\$3,125,113 6

Wheat on hand March 1, 1899, 434,000 bushels; March 1, 1900, 181,204 bushels.

Corn on hand March 1, 1899, 51,192 bushels; March 1, 1900, 172,699 bushels.

\* Product of 1898. † Product of 1899.

#### SUMMARY.—BARTON COUNTY.

Showing quantity and value of farm products, years ending March 1, 1899, and March 1, 1900.

Products.	1899.		1900.	
	Quantity	Value.	Quantity	Value.
Field crops.....acres	364,254	\$1,572,072 52	395,221	\$3,125,113 63
Animals slaughtered and sold for slaughter.....		89,601 00		95,618 00
Poultry and eggs sold.....		55,067 00		64,963 00
Wool clip.....lbs.			18	2 88
Cheese.....lbs.	2,757	248 13	58,412	5,841 20
Butter.....lbs.	912,514	143,672 18	906,289	162,068 11
Milk sold.....		13,410 00		15,462 00
Garden products marketed.....		3,106 00		3,451 00
Horticultural products.....		1,378 00		806 00
Honey and beeswax.....lbs.			260	39 00
Wine manufactured.....gals.	275	206 25	1,503	1,127 25
Wood marketed.....		229 00		60 00
Totals.....		\$1,878,990 08		\$3,474,542 07



## Reports of the Kansas State Board of Agriculture

680

### Kansas State Board of Agriculture.

#### LIVE STOCK.—BARTON COUNTY.

Table showing the number, value and mortality of live stock for 1899 and 1900.

Live stock.	1899.		1900.		Mortality.	
	Number.	Value.	Number.	Value.	1899.	1900.
Horses .....	9,699	\$397,659 00	8,910	\$445,500 00	190	99
Mules and asses .....	1,431	65,826 00	1,399	83,940 00	24	16
Milch cows .....	8,101	267,333 00	8,313	274,329 00	180	121
Other cattle .....	16,873	438,698 00	19,480	448,040 00	452	386
Sheep .....	46	138 00	272	816 00	.....	1
Swine .....	6,154	38,463 00	8,359	50,154 00	1,415	221
Totals .....	42,304	\$1,208,117 00	46,733	\$1,302,779 00	2,261	844

Number of dogs in county March 1, 1899, 2,271; March 1, 1900, 2,234.  
Number of sheep killed by wolves, year ending March 1, 1900, 2.

#### BOURBON COUNTY.

Organized in 1855; area, 637 square miles; population, 25,078; rank in population, 15; assessed valuation, \$5,643,362; miles of railroads, main track, 124.17; county-seat, Fort Scott, population, 10,973.

#### POPULATION AND VALUATION.—BOURBON COUNTY.

Table showing total population, by townships and cities, for 1899 and 1900, and the assessed valuation of the municipal townships and cities for 1900.

Townships and cities.	Population.		Assessed valuation of property.				
	1899.	1900.	Land.	Personal	City lots.	Railroad	Total.
The county .....	25,494	25,078	\$2,352,560	\$796,205	\$1,415,543	\$1,079,054	\$5,643,362
Drywood twp. ....	1,443	1,504	\$176,460	\$23,050	\$9,100	\$134,894	\$343,504
Franklin twp. ....	1,340	1,252	222,225	46,540	2,080	.....	270,845
Fulton city .....	448 } 1,332	423 } 1,325	173,110	42,010	28,330	45,175	288,625
Freedom twp. ....	884 }	902 }					
Bronson city .....	363 }	310 }					
Uniontown city .....	287 } 2,351	272 } 2,232	314,780	67,425	37,742	90,104	510,051
Marion twp. ....	1,701 }	1,650 }					
Marmaton twp. ....	1,299	1,200	217,565	28,720	9,300	133,034	388,619
Mill Creek twp. ....	1,007	1,002	203,445	29,725	3,660	26,075	262,905
Osage twp. ....	1,141	1,070	198,980	40,115	1,335	78,970	319,400
Pawnee twp. ....	1,038	996	150,935	23,810	11,381	103,593	289,719
Scott twp. ....	1,938	1,885	391,150	47,895	5,205	290,437	734,687
Timber Hill twp. ....	896	923	113,845	23,015	8,875	20,040	165,775
Walnut twp. ....	823	716	190,065	27,960	.....	32,262	250,287
Fort Scott city:							
1st ward .....	1,603	1,524					
2d ward .....	2,351	2,390					
3d ward .....	2,859	2,907					
4th ward .....	1,852	2,011					
5th ward .....	2,227	2,141					
				395,940	1,298,535	124,470	1,818,945



## Reports of the Kansas State Board of Agriculture

### Twelfth Biennial Report.—Part V.

681

#### FARM AND CROP STATISTICS.—BOURBON COUNTY.

Table showing acres, product and value of field crops in the county for 1899 and 1900.

Crops.	1899.			1900.		
	Acres.	Product.	Value.	Acres.	Product.	Value.
Winter wheat.....bu.	3,049	39,637	\$23,385 83	1,522	25,874	\$15,524 40
Spring wheat.....bu.						
Corn.....bu.	107,177	2,357,894	613,052 44	88,517	2,744,027	788,327 56
Oats.....bu.	9,604	211,288	42,257 60	13,583	380,324	76,064 80
Rye.....bu.	76	912	364 80	35	490	220 50
Barley.....bu.						
Buckwheat.....bu.	2	20	13 00			
Irish potatoes.....bu.	900	55,800	28,458 00	1,070	80,250	28,890 00
Sweet potatoes.....bu.	21	1,197	593 50	29	2,436	974 40
Castor-beans.....bu.	734	7,340	6,606 00	530	5,300	5,300 00
Cotton.....lbs.						
Flax.....bu.	15,836	110,832	99,766 80	17,060	153,540	199,602 00
Hemp.....lbs.						
Tobacco.....lbs.	1	1,250	125 00	1	200	20 00
Broom-corn.....lbs.	73	29,200	949 00	146	87,600	3,504 00
Millet & hungarian..tons	2,968	5,936	17,808 00	3,846	8,654	25,962 00
Sorghum:						
Forsyrup or sugar, gals.	273	15,288	4,892 16	360	34,200	11,628 00
For forage or grain....	1,838		9,190 00	2,803		16,818 00
Milo maize.....tons	24	72	180 00	25	75	375 00
Kafir-corn.....tons	2,593	7,779	23,337 00	1,890	5,670	22,680 00
Jerusalem corn.....tons	172	516	1,548 00			
Timothy.....tons	14,803			15,880		
Clover.....tons	3,285			2,768		
Blue-grass.....tons	554	* 12,988	55,199 00	954	† 14,680	69,730 00
Alfalfa.....tons	115			84		
Orchard-grass.....tons	45			9		
Other tame grasses.....tons	1,142			8,737		
Prairie-grass fenced, tons	46,349	22,432	67,296 00	54,734	23,618	82,663 00
Totals.....	211,634		\$995,027 13	214,583		\$1,328,283 66

Wheat on hand March 1, 1899, 285 bushels; March 1, 1900, 2,234 bushels.

Corn on hand March 1, 1899, 288,005 bushels; March 1, 1900, 219,727 bushels.

\* Product of 1898. † Product of 1899.

#### SUMMARY.—BOURBON COUNTY.

Showing quantity and value of farm products, years ending March 1, 1899, and March 1, 1900.

Products.	1899.		1900.	
	Quantity	Value.	Quantity	Value.
Field crops.....acres	212,126	\$1,024,073 63	214,583	\$1,328,283 66
Animals slaughtered and sold for slaughter.....		433,634 00		574,461 00
Poultry and eggs sold.....		61,918 00		58,125 00
Wool clip.....lbs.	900	135 00	2,400	384 00
Cheese.....lbs.	615	55 35	200	20 00
Butter.....lbs.	464,905	57,351 05	463,852	71,605 43
Milk sold.....		21,109 00		16,755 00
Garden products marketed.....		5,644 00		5,538 00
Horticultural products.....		5,924 00		1,097 00
Honey and beeswax.....lbs.	8,301	1,252 95	6,822	1,027 00
Wine manufactured.....gals.	547	410 25	325	243 75
Wood marketed.....		530 00		1,435 00
Totals.....		\$1,612,037 23		\$2,058,974 84



## Reports of the Kansas State Board of Agriculture

682

### Kansas State Board of Agriculture.

#### LIVE STOCK.—BOURBON COUNTY.

Table showing the number, value and mortality of live stock for 1899 and 1900.

Live stock.	1899.		1900.		Mortality.	
	Number.	Value.	Number.	Value.	1899.	1900.
Horses.....	10,002	\$466,488 00	9,844	\$492,200 00	193	261
Mules and asses.....	1,209	60,450 00	1,287	77,220 00	13	14
Milch cows.....	8,121	284,235 00	9,126	301,158 00	236	165
Other cattle.....	16,261	455,308 00	17,581	421,944 00	381	345
Sheep.....	408	1,326 00	875	2,625 00	.....	21
Swine.....	27,266	163,596 00	25,407	152,442 00	2,413	1,249
Totals.....	63,867	\$1,431,403 00	64,120	\$1,447,589 00	3,236	2,055

Number of dogs in county March 1, 1899, 1,989; March 1, 1900, 2,870.

#### BROWN COUNTY.

Organized in 1855; area, 576 square miles; population, 21,498; rank in population, 20; assessed valuation, \$5,251,541; miles of railroad, main track, 97.30; county-seat, Hiawatha, population, 2,976.

#### POPULATION AND VALUATION.—BROWN COUNTY.

Table showing total population, by townships and cities, for 1899 and 1900, and the assessed valuation of the municipal townships and cities for 1900.

Townships and cities.	Population.		Assessed valuation of property.				
	1899.	1900.	Land.	Personal	City lots.	Railroad	Total.
The county.....	20,991	21,498	\$2,720,170	\$1,049,565	\$664,353	\$817,453	\$5,251,541
Hamlin city.....	217	247					
Reserve city.....	152	1,204					
Hamlin twp.....	835	1,077	\$219,980	\$77,685	\$22,780	\$57,102	\$377,547
Hiawatha city.....	2,889	2,976					
Hiawatha twp.....	1,812	1,744	399,370	269,320	277,105	150,679	1,096,474
Irving twp.....		1,227	214,620	60,510	.....	.....	275,130
Baker city.....	171	172					
Willis city.....	190	193					
Horton city.....	3,334	3,504	461,475	159,105	266,564	262,449	1,149,593
Mission twp.....	2,152	2,003					
Morrill city.....	376	507	211,370	73,830	20,080	56,762	382,042
Morrill twp.....	1,015	912	172,720	49,280	3,045	45,455	270,480
Padonia twp.....		926	275,755	82,990	11,010	38,894	408,649
Powhattan city.....	157	238	222,380	67,420	20,270	54,278	364,348
Powhattan twp.....	1,029	1,261	308,160	127,430	20,404	54,209	510,203
Robinson city.....	482	918	234,340	82,015	23,095	97,625	437,075
Robinson twp.....	983	487					
Fairview city.....	383	407					
Walnut twp.....	1,357	1,266					
Everest city.....	497	503					
Washington twp.....	889	930					

\* Population not returned separately from township in 1900.



## Reports of the Kansas State Board of Agriculture

### Twelfth Biennial Report.—Part V.

683

#### FARM AND CROP STATISTICS.—BROWN COUNTY.

Table showing acres, product and value of field crops in the county for 1899 and 1900.

Crops.	1899.			1900.		
	Acres.	Product.	Value.	Acres.	Product.	Value.
Winter wheat.....bu.	61,105	366,630	\$201,646 50	36,725	844,675	\$506,805 00
Spring wheat.....bu.	186	744	372 00	45	540	270 00
Corn.....bu.	156,598	5,480,930	1,315,423 20	121,621	4,256,735	1,234,453 15
Oats.....bu.	25,453	712,684	128,283 12	28,941	983,994	196,798 80
Rye.....bu.	431	5,603	2,409 29	512	11,264	5,068 80
Barley.....bu.	331	9,599	3,071 68	648	18,792	6,777 20
Buckwheat.....bu.				8	80	60 00
Irish potatoes.....bu.	1,465	167,010	58,453 50	1,624	129,920	45,472 00
Sweet potatoes.....bu.	15	1,125	843 75	25	2,000	1,500 00
Castor-beans.....bu.						
Cotton.....lbs.						
Flax.....bu.	25	225	202 50			
Hemp.....lbs.						
Tobacco.....lbs.						
Broom-corn.....lbs.				20	16,000	640 00
Millet & hungarian..tons	1,039	2,338	8,183 00	1,035	2,588	7,764 00
Sorghum:						
For syrup or sugar.gals.	123	10,701	3,424 32	77	6,160	2,094 40
For forage or grain....	606		4,242 00	1,061		5,305 00
Milo maize.....tons	2	8	24 00			
Kafir-corn.....tons	679	2,716	8,827 00	1,323	5,292	15,876 00
Jerusalem corn.....tons	5	20	60 00			
Timothy.....tons	17,243		19,575			
Clover.....tons	8,765		11,426			
Blue-grass.....tons	18,304		18,345			
Alfalfa.....tons	671	* 19,693	83,695 25	376	† 22,578	107,245 50
Orchard-grass.....tons	39		8			
Other tame grasses..tons	2,402		5,999			
Prairie-grass fenced,tons	7,341	5,392	16,176 00	8,912	5,987	20,954 50
Totals.....	302,828		\$1,835,337 11	258,306		\$2,157,084 35

Wheat on hand March 1, 1899, 153,350 bushels; March 1, 1900, 58,165 bushels.

Corn on hand March 1, 1899, 1,761,975 bushels; March 1, 1900, 1,922,634 bushels.

\* Product of 1898. † Product of 1899.

#### SUMMARY.—BROWN COUNTY.

Showing quantity and value of farm products, years ending March 1, 1899, and March 1, 1900.

Products.	1899.		1900.	
	Quantity	Value.	Quantity	Value.
Field crops.....acres	302,828	\$1,835,337 11	258,306	\$2,157,084 35
Animals slaughtered and sold for slaughter.....		956,822 00		993,783 00
Poultry and eggs sold.....		50,428 00		61,246 00
Wool clip.....lbs.	3,465	519 75	8,025	1,284 00
Cheese.....lbs.	350	31 50	300	30 00
Butter.....lbs.	475,361	53,871 91	466,751	66,855 14
Milk sold.....		6,868 00		4,930 00
Garden products marketed.....		5,733 00		4,984 00
Horticultural products.....		6,652 00		7,429 00
Honey and beeswax.....lbs.	21,228	3,195 55	19,671	2,955 50
Wine manufactured.....gals.	1,291	968 25	1,077	807 75
Wood marketed.....		5,235 00		6,087 00
Totals.....		\$2,925,662 07		\$3,307,475 74



## Reports of the Kansas State Board of Agriculture

684

### Kansas State Board of Agriculture.

#### LIVE STOCK.—BROWN COUNTY.

Table showing the number, value and mortality of live stock for 1899 and 1900.

Live stock.	1899.		1900.		Mortality.	
	Number.	Value.	Number.	Value.	1899.	1900.
Horses .....	10,594	\$455,542 00	10,518	\$525,900 00	105	122
Mules and asses.....	1,736	86,800 00	1,799	107,940 00	9	18
Milch cows.....	8,910	338,580 00	9,477	312,741 00	90	108
Other cattle.....	18,828	508,356 00	23,016	575,400 00	180	291
Sheep .....	1,854	5,582 00	2,768	8,304 00	104	237
Swine.....	46,479	278,874 00	50,549	303,294 00	3,124	5,437
Totals.....	88,401	\$1,673,714 00	98,127	\$1,833,579 00	3,612	6,213

Number of dogs in county March 1, 1899, 2,441; March 1, 1900, 2,249.

Number of sheep killed by dogs, year ending March 1, 1899, 8; March 1, 1900, 26.

Number of sheep killed by wolves, year ending March 1, 1899, 5; March 1, 1900, 5.

#### BUTLER COUNTY.

Organized in 1855; area, 1,428 square miles; population, 22,800; rank in population, 18; assessed valuation, \$5,582,488; miles of railroad, main track, 177.59; county-seat, El Dorado; population, 3,649.

#### POPULATION AND VALUATION.—BUTLER COUNTY.

Table showing total population, by townships and cities, for 1899 and 1900, and the assessed valuation of the municipal townships and cities for 1900.

Townships and cities.	Population.		Assessed valuation of property.				
	1899.	1900.	Land.	Personal	City lots.	Railroad	Total.
The county.....	21,741	22,800	\$2,906,032	\$987,193	\$549,247	\$1,140,016	\$5,582,488
Augusta city.....	1,080	1,204	\$104,883	\$45,324	\$79,661	\$94,563	\$325,031
Augusta twp.....	485	512	791	95,980	27,123	4,123	43,731
Benton twp.....	757	791	81,748	26,397	3,307	57,070	170,957
Bloomington twp...	473	471	91,533	26,390	362	.....	108,145
Bruno twp.....	605	681	166,261	42,535	.....	.....	178,300
Chelsea twp.....	605	636	57,885	17,202	.....	.....	209,158
Clay twp.....	292	246	107,555	28,513	.....	.....	75,087
Clifford twp.....	487	538	114,546	44,413	42,513	35,460	136,068
Douglass city.....	833	771	160,762	102,852	371,845	138,574	236,932
Douglass twp.....	512	554	88,180	43,501	2,540	44,528	774,033
El Dorado city.....	3,574	3,649	85,080	18,892	.....	.....	178,749
El Dorado twp.....	625	629	84,843	25,059	3,753	96,183	113,399
Fairmount twp.....	576	616	75,013	16,925	.....	54,009	209,838
Fairview twp.....	373	396	173,549	45,477	623	73,328	145,947
Glencoe twp.....	642	706	71,884	29,739	12,483	55,833	292,977
Hickory twp.....	455	464	59,530	10,499	.....	.....	169,939
Lincoln twp.....	340	388	92,282	76,544	11,170	51,355	70,029
Leon city.....	529	470	92,313	48,004	.....	.....	231,351
Little Walnut twp.	395	509	97,300	16,575	.....	26,053	140,317
Logan twp.....	333	321	66,680	26,895	5,534	24,118	139,928
Brainerd city.....	68	80	182,809	69,787	545	45,619	123,227
White Water city..	206	240	97,297	21,310	1,885	7,619	297,760
Milton twp.....	633	603	81,560	20,246	.....	.....	128,111
Murdock twp.....	603	631	86,652	11,985	913	74,543	101,806
Pleasant twp.....	580	935	79,425	19,888	.....	64,252	174,083
Plum Grove twp...	491	522	174,065	46,705	872	.....	163,565
Prospect twp.....	700	746	70,816	32,705	3,568	49,113	221,642
Richland twp.....	605	698	66,680	26,402	3,550	43,250	156,202
Rock Creek twp...	416	419	98,941	22,706	.....	48,368	139,882
Rosalie twp.....	554	573	.....	.....	.....	.....	170,015
Spring twp.....	679	702	.....	.....	.....	.....	.....
Sycamore twp.....	505	492	.....	.....	.....	.....	.....
Towanda twp.....	662	703	.....	.....	.....	.....	.....
Union twp.....	522	632	.....	.....	.....	.....	.....
Walnut twp.....	545	572	.....	.....	.....	.....	.....



## Reports of the Kansas State Board of Agriculture

### Twelfth Biennial Report.—Part V.

685

#### FARM AND CROP STATISTICS.—BUTLER COUNTY.

Table showing acres, product and value of field crops in the county for 1899 and 1900.

Crops.	1899.			1900.		
	Acres.	Product.	Value.	Acres.	Product.	Value.
Winter wheat.....bu.	19,160	210,760	\$105,380 00	11,711	210,798	\$120,154 86
Spring wheat.....bu.						
Corn.....bu.	180,553	5,597,140	1,343,313 60	162,214	3,244,280	940,841 20
Oats.....bu.	19,430	582,900	116,580 00	21,492	666,252	139,912 92
Rye.....bu.	557	7,798	2,963 24	208	3,328	1,664 00
Barley.....bu.				3	60	20 40
Buckwheat.....bu.	3	24	15 60	17	153	114 75
Irish potatoes.....bu.	1,156	83,232	34,125 12	1,408	136,576	60,093 44
Sweet potatoes.....bu.	4	400	240 00	3	225	90 00
Castor-beans.....bu.	10	60	54 00			
Cotton.....lbs.						
Flax.....bu.	1,850	14,800	13,320 00	1,644	13,152	17,097 60
Hemp.....lbs.						
Tobacco.....lbs.						
Broom-corn.....lbs.	123	73,800	2,398 50	374	130,900	5,236 00
Millet & hungarian.....tons	15,448	30,896	92,688 00	16,517	33,034	82,585 00
Sorghum:						
Forsyrup or sugar, gals.	483	41,538	13,292 16	555	41,625	14,152 50
For forage or grain.....	17,264		86,320 00	20,908		146,356 00
Milo maize.....tons	72	216	432 00	100	350	1,225 00
Kafir-corn.....tons	26,768	107,072	267,680 00	29,908	104,678	366,373 00
Jerusalem corn.....tons	25	81	203 00			
Timothy.....tons	13			24		
Cover.....tons	26			56		
Blue-grass.....tons	140	* 25,222	107,193 50	116	† 28,342	134,624 50
Alfalfa.....tons	13,743			13,000		
Orchard-grass.....tons	1			23		
Other tame grasses.....tons	27					
Prairie-grass fenced, tons	288,998	85,866	257,598 00	290,113	78,755	275,642 50
Totals.....	585,854		\$2,443,796 72	570,394		\$2,306,183 67

Wheat on hand March 1, 1899, 20,183 bushels; March 1, 1900, 19,710 bushels.  
Corn on hand March 1, 1899, 740,949 bushels; March 1, 1900, 1,090,960 bushels.

\* Product of 1898. † Product of 1899.

#### SUMMARY.—BUTLER COUNTY.

Showing quantity and value of farm products, years ending March 1, 1899, and March 1, 1900.

Products.	1899.		1900.	
	Quantity	Value.	Quantity	Value.
Field crops.....acres	585,854	\$2,443,796 72	570,394	\$2,306,183 67
Animals slaughtered and sold for slaughter.....		1,293,519 00		1,598,175 00
Poultry and eggs sold.....		88,904 00		109,080 00
Wool clip.....lbs.	77,567	11,635 05	79,526	12,724 16
Cheese.....lbs.	3,137	282 33	2,000	200 00
Butter.....lbs.	630,559	71,015 51	654,440	93,352 35
Milk sold.....		2,639 00		4,617 06
Garden products marketed.....		6,140 00		3,598 00
Horticultural products.....		5,061 00		6,653 00
Honey and beeswax.....lbs.	31,171	4,680 90	9,836	1,476 90
Wine manufactured.....gals.	3,280	2,460 00	572	429 00
Wood marketed.....		1,365 00		2,370 00
Totals.....		\$3,931,498 51		\$4,138,869 08



## Reports of the Kansas State Board of Agriculture

686

### Kansas State Board of Agriculture.

#### LIVE STOCK.—BUTLER COUNTY.

Table showing the number, value and mortality of live stock for 1899 and 1900.

Live stock.	1899.		1900.		Mortality.	
	Number.	Value.	Number.	Value.	1899.	1900.
Horses .....	14,444	\$577,760 00	14,826	\$741,300 00	129	119
Mules and asses .....	1,897	89,079 00	1,980	118,800 00	7	12
Milch cows .....	12,380	396,160 00	13,534	446,622 00	166	158
Other cattle .....	59,610	1,967,130 00	67,752	1,761,552 00	519	575
Sheep .....	9,266	30,115 00	9,593	28,779 00	82	242
Swine .....	56,266	323,530 00	58,951	353,706 00	7,537	4,869
Totals. ....	153,833	\$3,363,774 00	166,636	\$3,450,759 00	8,440	5,975

Number of dogs in county March 1, 1899, 3,091; March 1, 1900, 3,100.

Number of sheep killed by dogs, year ending March 1, 1899, 4; March 1, 1900, 37.

Number of sheep killed by wolves, year ending March 1, 1899, 18; March 1, 1900, 19.

#### CHASE COUNTY.

Organized in 1859; area, 750 square miles; population, 7,598; rank in population, 69; assessed valuation, \$2,929,518; miles of railroad, main track, 57.03; county-seat, Cottonwood Falls, population, 867.

#### POPULATION AND VALUATION.—CHASE COUNTY.

Table showing total population, by townships and cities, for 1899 and 1900, and the assessed valuation of the municipal townships and cities for 1900.

Townships and cities.	Population.		Assessed valuation of property.				
	1899.	1900.	Land.	Personal	City lots.	Railroad	Total.
The county.....	7,937	7,598	\$1,623,383	\$577,950	\$195,995	\$527,190	\$2,929,518
Bazaar twp.....	517	497	\$205,630	\$69,140		\$10,340	\$285,110
Cedar twp.....	731	760	161,535	48,895			210,430
Cottonwood twp...	923	819	198,450	52,290			250,740
Diamond Creek twp	1,149	1,092	317,872	80,520	\$11,890	148,720	411,320
Cottonwood Falls city.....	951	867			17,345	124,835	540,572
Strong City.....	1,216	975	313,405	215,170	160,590	153,950	843,115
Falls twp.....	947	966					
Matfield twp.....	616	732	199,486	36,840	6,200	90	242,615
Toledo twp.....	884	890	232,005	75,095		89,255	396,355

#### FARM AND CROP STATISTICS.—CHASE COUNTY.

Table showing acres, product and value of field crops in the county for 1899 and 1900.

Crops.	1899.			1900.		
	Acres.	Product.	Value.	Acres.	Product.	Value.
Winter wheat.....bu.	4,616	64,624	\$37,481 92	3,673	69,787	\$40,476 46
Spring wheat.....bu.					140	63 00
Corn.....bu.	48,076	1,442,250	389,415 60	45,254	995,588	308,632 28
Oats.....bu.	2,154	60,312	15,078 00	2,134	59,752	13,742 96
Rye.....bu.	81	1,377	495 72	56	1,288	412 16
Barley.....bu.						
Buckwheat.....bu.						
Irish potatoes.....bu.	482	42,416	16,117 08	779	48,298	17,870 26
Sweet potatoes.....bu.	7	791	522 06	11	462	217 14
Castor-beans.....bu.				1	8	8 00
Cotton.....lbs.						



## Reports of the Kansas State Board of Agriculture

### Twelfth Biennial Report.—Part V.

687

#### FARM AND CROP STATISTICS.—CHASE COUNTY—Concluded.

Crops.	1899.			1900.		
	Acres.	Product.	Value.	Acres.	Product.	Value.
Flax.....bu.	952	9,520	\$3,568 00	469	3,752	\$4,877 60
Hemp.....lbs.						
Tobacco.....lbs.						
Broom-corn.....lbs.						
Millet & hungarian.....tons	2,398	4,796	11,990 00	2,954	5,908	14,770 00
Sorghum:						
For syrup or sugar, gals.	262	11,790	3,772 80	215	15,050	5,117 00
For forage or grain.....	6,482		38,892 00	6,718		40,808 00
Milo maize.....tons	135	475	911 00	43	151	453 00
Kafir-corn.....tons	9,611	36,040	81,090 00	9,873	34,556	103,668 00
Jerusalem corn.....tons	5	18	41 00	10	35	105 00
Timothy.....tons	10					
Clover.....tons						
Blue-grass.....tons	35	* 14,185	60,286 25	22	† 18,610	88,397 50
Alfalfa.....tons	9,692			9,557		
Orchard-grass.....tons	16			23		
Other tame grasses.....tons	13					
Prairie-grass fenced, tons	137,744	19,830	59,490 00	122,198	20,317	71,109 50
Totals.....	222,771		\$724,151 43	203,997		\$710,227 86

Wheat on hand March 1, 1899, 10,545 bushels; March 1, 1900, 8,950 bushels.  
Corn on hand March 1, 1899, 140,272 bushels; March 1, 1900, 286,349 bushels.

\* Product of 1898. † Product of 1899.

#### SUMMARY.—CHASE COUNTY.

Showing quantity and value of farm products, years ending March 1, 1899, and March 1, 1900.

Products.	1899.		1900.	
	Quantity	Value.	Quantity	Value.
Field crops.....acres	222,771	\$724,151 43	203,997	\$710,227 86
Animals slaughtered and sold for slaughter.....		1,033,077 00		959,869 00
Poultry and eggs sold.....		18,148 00		27,387 00
Wool clip.....lbs.	1,050	157 50	11,520	1,843 20
Cheese.....lbs.	392	35 28	25	2 50
Butter.....lbs.	149,175	18,171 69	172,344	24,720 66
Milk sold.....		853 00		3,168 00
Garden products marketed.....		1,750 00		3,259 00
Horticultural products.....		1,839 00		2,889 00
Honey and beeswax.....lbs.	5,802	872 55	6,796	1,020 40
Wine manufactured.....gals.	399	299 25	84	63 00
Wood marketed.....		438 00		517 00
Totals.....		\$1,799,892 70		\$1,764,916 62

#### LIVE STOCK.—CHASE COUNTY.

Table showing the number, value and mortality of live stock for 1899 and 1900.

Live stock.	1899.		1900.		Mortality.	
	Number.	Value.	Number.	Value.	1899.	1900.
Horses.....	4,906	\$201,146 00	4,886	\$244,300 00	67	73
Mules and asses.....	459	22,950 00	511	30,680 00	5	4
Milch cows.....	2,410	84,350 00	2,942	97,086 00	67	76
Other cattle.....	25,870	750,230 00	29,196	759,093 00	431	412
Sheep.....	1,381	4,834 00	895	2,685 00	42	89
Swine.....	15,221	79,910 00	13,789	82,734 00	971	1,602
Totals.....	50,247	\$1,143,420 00	52,219	\$1,216,561 00	1,583	2,236

Number of dogs in county March 1, 1899, 923; March 1, 1900, 974.

Number of sheep killed by dogs, year ending March 1, 1899, 1; March 1, 1900, 41.

Number of sheep killed by wolves, year ending March 1, 1900, 30.



## Reports of the Kansas State Board of Agriculture

688

### Kansas State Board of Agriculture.

#### CHAUTAUQUA COUNTY.

Organized in 1875; area, 651 square miles; population, 11,458; rank in population, 54; assessed valuation, \$2,228,832; miles of railroad, main track, 94; county-seat, Sedan, population, 1,258.

#### POPULATION AND VALUATION.—CHAUTAUQUA COUNTY.

Table showing total population, by townships and cities, for 1899 and 1900, and the assessed valuation of the municipal townships and cities for 1900.

Townships and cities.	Population.		Assessed valuation of property.				
	1899.	1900.	Land.	Personal	City lots.	Railroad	Total.
The county.....	11,390	11,458	\$1,135,628	\$447,104	\$194,218	\$451,125	\$2,228,832
Belleville twp.....	1,310	1,291	\$106,021	\$32,497	\$19,478	\$78,738	\$236,734
Caneyville twp.....	939	1,030	106,644	32,739	860		140,243
Center twp.....	545	580	97,040	37,245			134,285
Harrison twp.....	771	747	122,985	50,620	3,546	81,794	258,945
Hendricks twp.....	875	725	75,416	28,573	12,117	43,502	159,608
Cedarvale city.....	869	909	123,092	72,161	58,389	15,335	268,977
Jefferson twp.....	891	879	1,788				
Lafayette twp.....	557	535	80,545	22,450			102,995
Little Caney twp....	836	988	99,385	21,294	5,130	62,281	188,080
Salt Creek twp.....	536	506	73,505	17,400		37,525	128,430
Sedan city.....	1,232	1,258	83,860	79,780	94,080	39,787	297,507
Sedan twp.....	593	594					
Summit twp.....	777	735	90,104	39,725	318	56,657	186,804
Washington twp.....	659	681	77,031	12,620	300	35,506	125,457
Telephone system..							757

#### FARM AND CROP STATISTICS.—CHAUTAUQUA COUNTY.

Table showing acres, product and value of field crops in the county for 1899 and 1900.

Crops.	1899.			1900.		
	Acres.	Product.	Value.	Acres.	Product.	Value.
Winter wheat.....bu.	19,394	213,334	\$106,667 00	15,886	301,834	\$184,118 74
Spring wheat.....bu.						
Corn.....bu.	64,316	1,543,584	401,331 84	65,422	1,766,394	529,918 20
Oats.....bu.	2,746	82,380	18,123 60	3,871	127,743	25,548 60
Rye.....bu.	10	160	72 00	41	820	369 00
Barley.....bu.						
Buckwheat.....bu.				2	20	15 00
Irish potatoes.....bu.	279	25,110	12,555 00	472	37,288	21,999 92
Sweet potatoes.....bu.	14	1,260	604 80	19	1,900	1,235 00
Castor-beans.....bu.	161	1,288	1,159 20	65	650	650 00
Cotton.....lbs.	1	300	15 00			
Flax.....bu.	392	2,352	2,166 80	960	7,680	9,884 00
Hemp.....lbs.						
Tobacco.....lbs.				1	200	20 00
Broom-corn.....lbs.	20	10,000	325 00	57	28,500	1,140 00
Millet & hungarian..tons	3,696	9,240	27,720 00	3,765	7,530	18,825 00
Sorghum:						
For syrup or sugar, gals.	202	12,120	3,878 40	240	27,600	9,384 00
For forage or grain....	3,879		38,790 00	5,630		39,410 00
Milo maize.....tons	10	20	60 00	12	42	84 00
Kafir-corn.....tons	2,811	12,650	25,300 00	4,028	14,098	28,196 00
Jerusalem corn.....tons						
Timothy.....tons	6					
Clover.....tons	3			31		
Blue-grass.....tons	22			88		
Alfalfa.....tons	4,115	* 5,239	22,265 75	3,045	† 13,346	63,393 50
Orchard-grass.....tons	7			3		
Other tame grasses..tons				22		
Prairie-grass fenced, tons	48,332	22,312	66,936 00	61,792	24,067	84,234 50
Totals.....	150,416		\$727,970 39	165,452		\$1,018,425 46

Wheat on hand March 1, 1899, 21,300 bushels; March 1, 1900, 20,343 bushels.  
Corn on hand March 1, 1899, 186,048 bushels; March 1, 1900, 142,821 bushels.

\*Product of 1899. †Product of 1899.



## Reports of the Kansas State Board of Agriculture

### Twelfth Biennial Report.—Part V.

689

#### SUMMARY.—CHAUTAUQUA COUNTY.

Showing quantity and value of farm products, years ending March 1, 1899, and March 1, 1900.

Products.	1899.		1900.	
	Quantity	Value.	Quantity	Value.
Field crops.....acres	150,416	\$727,970 39	165,452	\$1,018,425 46
Animals slaughtered and sold for slaughter.....		502,861 00		509,175 00
Poultry and eggs sold.....		27,296 00		30,336 00
Wool clip.....lbs.			610	97 60
Cheese.....lbs.	1,200	108 00	1,175	117 50
Butter.....lbs.	278,383	31,530 59	380,928	57,739 07
Milk sold.....		231 00		592 00
Garden products marketed.....		5,704 00		5,670 00
Horticultural products.....		8,540 00		2,800 00
Honey and beeswax.....lbs.	5,705	855 75	3,878	583 95
Wine manufactured.....gals.	181	135 75	26	19 50
Wood marketed.....		2,195 00		3,381 00
Totals.....		\$1,307,480 48		\$1,628,937 08

#### LIVE STOCK.—CHAUTAUQUA COUNTY.

Table showing the number, value and mortality of live stock for 1899 and 1900.

Live stock.	1899.		1900.		Mortality.	
	Number.	Value.	Number.	Value.	1899.	1900.
Horses.....	7,310	\$292,400 00	7,863	\$393,150 00	145	169
Mules and asses.....	1,192	54,832 00	1,136	68,160 00	15	33
Milch cows.....	8,459	253,770 00	9,557	315,381 00	210	260
Other cattle.....	26,664	693,264 00	23,526	588,150 00	298	542
Sheep.....	20	60 00	140	420 00	3	
Swine.....	25,742	154,452 00	20,856	125,136 00	1,553	1,057
Totals.....	69,387	\$1,448,778 00	63,078	\$1,490,397 00	2,254	2,061

Number of dogs in county March 1, 1899, 2,001; March 1, 1900, 2,290.  
Number of sheep killed by wolves, year ending March 1, 1899, 5.

#### CHEROKEE COUNTY.

Organized in 1866; area, 589 square miles; population, 42,154; rank in population, 4; assessed valuation, \$4,992,702; miles of railroad, main track, 105.40; county-seat, Columbus, population, 2,414.

#### POPULATION AND VALUATION.—CHEROKEE COUNTY.

Table showing total population, by townships and cities, for 1899 and 1900, and the assessed valuation of the municipal townships and cities for 1900.

Townships and cities.	Population.		Assessed valuation of property.				
	1899.	1900.	Land.	Personal	City lots.	Railroad	Total.
The county.....	39,768	42,154	\$2,243,198	\$875,293	\$963,666	\$910,545	\$4,992,702
Scammon city.....	1,514	1,802					
Cherokee twp.....	2,090	2,135	\$102,752	\$29,585	\$46,429	\$68,284	\$247,050
Crawford twp.....	887	857	116,530	10,354		74,092	200,976
Garden twp.....	3,100	2,652	177,604	89,491	4,250	20,681	292,026
Lola twp.....	1,100	1,145	136,890	14,018	6,390	97,431	254,729
Galena city.....	5,143	10,511					
Empire City.....	3,133	2,245	150,541	393,018	422,832	69,013	1,035,404
Lowell twp.....	4,385	1,486					



## Reports of the Kansas State Board of Agriculture

690

### Kansas State Board of Agriculture.

#### POPULATION AND VALUATION.—CHEROKEE COUNTY—Concluded.

Townships and cities.	Population.		Assessed valuation of property.				
	1899.	1900.	Land.	Personal	City lots.	Railroad	Total.
Lyon twp.....	1,048	1,043	\$161,010	\$22,251		\$138	\$183,399
Weir City.....	3,486	3,091					
Mineral twp.....	1,370 } 4,856	1,539 } 4,630	153,965	82,227	\$147,964	121,087	510,243
Neosho twp.....	973	1,123	171,104	16,405	3,836	40,105	231,450
Pleasant View twp.	1,019	1,073	168,380	20,770		32,879	222,029
Ross twp.....	2,235	2,776	234,610	46,804	3,383	76,895	361,692
Columbus city.....	2,367 } 3,315	2,414 } 3,430	124,230	55,759	196,927	100,307	477,223
Salamanca twp.....	948 } 880	1,016 } 950	126,681	18,290	3,804	50,296	199,071
Shawnee twp.....	1,333	1,325	235,850	26,783	831	37,812	301,276
Baxter Springs city.	1,480 } 2,785	1,539 } 2,971	178,051	49,538	127,020	121,525	476,134
Spring Valley twp..	1,305	1,432					

#### FARM AND CROP STATISTICS.—CHEROKEE COUNTY.

Table showing acres, product and value of field crops in the county for 1899 and 1900.

Crops.	1899.			1900.		
	Acres.	Product.	Value.	Acres.	Product.	Value.
Winter wheat.....bu.	30,208	181,248	\$99,686 40	22,057	330,855	\$198,513 00
Spring wheat.....bu.						
Corn.....bu.	79,199	1,663,179	399,162 96	81,308	2,032,700	589,483 00
Oats.....bu.	21,887	525,288	99,804 72	26,107	704,889	140,977 80
Rye.....bu.	3	21	9 24	82	1,230	590 40
Barley.....bu.	10	200	70 00			
Buckwheat.....bu.	5	50	32 50			
Irish potatoes.....bu.	584	42,048	22,285 44	15	135	101 25
Sweet potatoes.....bu.	209	17,138	9,597 28	912	62,016	26,666 88
Castor-beans.....bu.	164	1,312	1,180 80	847	71,995	25,918 20
Cotton.....lbs.				61	488	488 00
Flax.....bu.	8,597	51,582	46,423 80			
Hemp.....lbs.				5,173	41,384	53,799 20
Tobacco.....lbs.						
Broom-corn.....lbs.	94	47,000	1,527 50	253	151,800	6,072 00
Millet & hungarian..tons	1,681	3,362	10,086 00	1,788	2,682	8,046 00
Sorghum:						
For syrup or sugar, gals.	158	15,800	5,056 00	299	15,847	5,387 98
For forage or grain....	1,859		13,013 00	1,850		9,250 00
Milo maize.....tons	73	146	438 00	81	243	486 00
Kafir-corn.....tons	1,598	4,794	11,985 00	2,146	6,438	12,876 00
Jerusalem corn.....tons	18	54	135 00			
Timothy.....tons	9,387			7,548		
Clover.....tons	235			119		
Blue-grass.....tons	658			756		
Alfalfa.....tons	14	5,761	24,484 25	10	5,154	24,481 50
Orchard-grass.....tons				22		
Other tame grasses..tons	5,763		8,994			
Prairie-grassfenced, tons	27,442	22,062	66,186 00	27,877	21,562	75,467 00
Totals.....	189,846		\$811,163 89	188,305		\$1,178,604 21

Wheat on hand March 1, 1899, 43,364 bushels; March 1, 1900, 15,826 bushels.  
Corn on hand March 1, 1899, 371,254 bushels; March 1, 1900, 198,076 bushels.

\* Product of 1898. † Product of 1899.



## Reports of the Kansas State Board of Agriculture

### Twelfth Biennial Report.—Part V.

691

#### SUMMARY.—CHEROKEE COUNTY.

Showing quantity and value of farm products, years ending March 1, 1899, and March 1, 1900.

Products.	1899.		1900.	
	Quantity	Value.	Quantity	Value.
Field crops .....	189,846	\$811,163 89	188,305	\$1,178,604 21
Animals slaughtered and sold for slaughter .....		212,927 00		183,793 00
Poultry and eggs sold .....		40,094 00		57,566 00
Wool clip .....	3,772	565 80	3,813	610 08
Cheese .....	2,800	252 00	602	60 20
Butter .....	419,219	46,114 09	375,461	52,607 24
Milk sold .....		8,448 00		5,804 00
Garden products sold .....		24,074 00		22,546 00
Horticultural products .....		24,562 00		13,490 00
Honey and beeswax .....	20,446	3,099 80	25,976	3,899 25
Wine manufactured .....	688	516 00	109	81 75
Wood marketed .....		3,795 00		3,158 00
Totals .....		\$1,175,551 58		\$1,522,219 73

#### LIVE STOCK.—CHEROKEE COUNTY.

Table showing the number, value and mortality of live stock for 1899 and 1900.

Live stock.	1899.		1900.		Mortality.	
	Number.	Value.	Number.	Value.	1899.	1900.
Horses .....	8,757	\$385,308 00	8,626	\$431,300 00	320	612
Mules and asses .....	1,439	80,584 00	1,420	85,200 00	38	36
Milch cows .....	6,523	202,213 00	7,023	231,759 00	282	202
Other cattle .....	10,950	262,800 00	10,464	261,600 00	590	298
Sheep .....	1,067	3,435 00	760	2,280 00	117	117
Swine .....	16,768	113,184 00	13,920	83,520 00	1,125	1,102
Totals .....	45,494	\$1,047,524 00	42,213	\$1,095,659 00	2,472	2,397

Number of dogs in county March 1, 1899, 2,408; March 1, 1900, 2,414.

Number of sheep killed by dogs, year ending March 1, 1899, 3; March 1, 1900, 7.

Number of sheep killed by wolves, year ending March 1, 1899, 4; March 1, 1900, 14.

#### CHEYENNE COUNTY.

Organized in 1886; area, 1,020 square miles; population, 2,676; rank in population, 83; assessed valuation, \$782,769; miles of railroad, main track, 22.33; county-seat, St. Francis.

#### POPULATION AND VALUATION.—CHEYENNE COUNTY.

Table showing total population, by townships and cities, for 1899 and 1900, and the assessed valuation of the municipal townships and cities for 1900.

Townships and cities.	Population.		Assessed valuation of property.				
	1899.	1900.	Land.	Personal	City lots.	Railroad	Total.
The county .....	2,670	2,676	\$579,912	\$80,982	\$28,047	\$93,828	\$782,769
Alexander twp .....	93	80	\$27,460	\$1,540			\$29,000
Beaver twp .....	150	148	69,070	3,855			72,925
Benkelman twp .....	203	200	34,120	4,660			38,780
Bird City .....	111 }	71 }	24,980	3,240	\$4,211	\$24,746	57,177
Bird City twp .....	32 }	32 }					
Calhoun twp .....	144	197	39,790	3,494			43,284