

Reports of the Kansas State Board of Agriculture

Section 244, Pages 7291 - 7320

These reports by the State Board of Agriculture include the proceedings of the board, reports for the previous year, maps of counties, abstracts of counties, miscellaneous articles, and reports of agricultural societies, the state fair, state and county statistics, agricultural industries and products, the agricultural college, and the Kansas Academy of Science. The annual reports began in 1872 and were succeeded by biennial reports beginning in 1877-78. Volume numbers were discontinued with the 1953-1956 report; the last being volume 44. From 1953 to 1976 the reports drop "biennial" from the title. Annual reports begin again from 1976 to 1984, except 1982-1983 which is biennial. The dates for each report reflects the reporting year and not the publication date, which was usually a year later. The title of each report reflects the form given on the title page. Only volumes 1 (1872), 2 (1873), 3 (1874), 4 (1875), the centennial edition (1875), 5 (1876), 6 (1877-1878), 7 (1879-1880), 10 (1885-1886), 11 (1887-1888), 13 (1891-1892), and 14 (1893-1894) are currently available.

Creator: Kansas State Board of Agriculture

Date: Bulk 1872-1984

Callnumber: SP 630.6 K13

KSHS Identifier: DaRT ID: 210899

Item Identifier: 210899

www.kansasmemory.org/item/210899

KANSAS
HISTORICAL
SOCIETY

§ Union Pacific railroad station.
 † Post office, Ellis.
 * Post office, Grainfield.



Reports of the Kansas State Board of Agriculture

MAXIMUM, MINIMUM AND MEAN TEMPERATURES FOR 1891—MIDDLE DIVISION.

STATIONS.	January.	February.	March.	April.	May.	June.	July.	August.	September.	October.	November.	December.	Annual.
	Maximum. Mean. Minimum.	Maximum. Mean. Minimum.	Maximum. Mean. Minimum.	Maximum. Mean. Minimum.	Maximum. Mean. Minimum.	Maximum. Mean. Minimum.	Maximum. Mean. Minimum.	Maximum. Mean. Minimum.	Maximum. Mean. Minimum.	Maximum. Mean. Minimum.	Maximum. Mean. Minimum.	Maximum. Mean. Minimum.	Maximum. Mean. Minimum.
Abilene †	60 6 33.3 64	0 28.9 68	0 33.8 92 23 57.2	96 57 71.9	96 52 75.3	100 43 75.4	93 37 71.0	88 35 56.4	87	8 42.2 70	6 40.5 100 0
Alton †	53 0 29.2 67	0 28.2 69	-1 32.6 96 20 55.4	92 50	95 52	92 40	82 24
Burr Oak *	60 0 30.9 69	68 4	87 19	88 32	92 50	95 52	92 40	82 24
Cawker City *	60 4 30.9 60	0 24.7 72	2 33.8 94 26 57.8	88 36 62.3	92 54 69.4	98 58 76.5	100 48 74.4	96 42 69.8	80 27 53.0 70	4 37.1 58	3 37.2 100	0 52.24
Coldwater †
Concordia (near) †	54 -2 28.4 60	-6 24.8 66	8 31.4 90 24 53.6	87 30 59.4	92 46 68.8	92 52 71.8	97 40 71.8	92 37 68.0	85 28 53.0 83	4 37.8 65	6 35.4 97	-8 50.35
Concordia †	57 6 31.6 65	-3 27.6 70	2 33.1 90 21 56.8	89 34 60.8	92 51 70.0	94 49 72.8	100 41 74.4	94 38 70.6	86 29 54.6 82	6 39.2 68	3 37.7 100	-3 52.43
Cunningham †	57 4 22.4 73	0 28.5 69	6 35.1 95 16 57.0	90 32 62.0	96 52 71.1	94 57 74.6	100 42 75.1	93 37 69.2	85 28 53.2 82	6 39.6 68	4 37.3 100	0 52.51
Ellis †	51 2 30.6 70	-1 30.0 72	4 33.3 92 24 56.1	90 32	92 52	96 60	102 58	96 52 74.8	84 32	66 12	102 -1
Halstead	54 9 31.5 68	2 30.3 64	3 35.2 84 19 56.1	83 30 60.8	88 50 70.8	89 54 74.0	94 44 73.6	88 34 69.3	78	8 39.0 63	4 39.9 94	2
Hutchinson †
Kelllogg †	87 19 59.3	89 34 64.0	99 53 74.0	98 54 72.1	103 42 77.0	96 37 73.4	90 35 57.8 87	5 42.2
Kiowa †
La Crosse †	53 0 28.7 75	0 31.2 68	3 33.8 91 20 57.0	90 38 62.8	92 53 72.4	96 52 77.0	97 55 77.7	98 47 71.6	80 31 53.6 79	4 42.6 57	4 37.4	95 0 54.00
Larned †
Macksville *	70 5 36.9 92 18 57.7	95 32 62.1	100 53 69.3	104 54 74.4	106 44 75.7	100 38 69.6
Mankato	59 2 27.0 61	-4 25.2 68	-6 31.8	89 40 58.6	90 49 67.0	90 50 70.0	98 42 72.7	93 40 67.0	84 25 50.6 82	2 36.8	98 -6
McPherson †
Minneapolis *	52 8 29.5 60	2 27.2 64	-2 32.9 88 24 55.9	86 38 61.3	90 54 70.7	92 56 73.6	94 40 74.4	90 38 69.1	80 30 51.7 77	8 38.4 72	3 37.3 94	-2 51.88
Phillipsburg †	51 10 29.4 63	2 30.1
Platteville *
Pleasant Dale *	60 -2 27.2 73	-2 28.6 65	2 34.1 90 15 52.2	92 27 59.0	98 49 66.2	97 50 70.5	97 37 69.7	94 37 64.7	82 37 51.0 79	3 37.0 63	2 35.9 97	-2 49.68
Rome *	60 14 34.7 74	6 33.9 73	10 39.5 82 24 57.8	86 37 62.7	96 57 72.8	94 59 75.4	102 49 76.4	92 41 72.1	88 30 57.1 84	8 43.7 68	8 40.5 102	6 55.55
Sallina	52 12 31.5 63	4 28.4 66	5 34.3 86 26 57.3	87 39 62.2	89 45 71.2	89 64 76.2	95 50 76.3	89 45 70.8	82 33 55.4 77	9 39.6 64	10 37.7 95	4 53.41
Springvale *	55 12	76	2 33.2 72	10 39.8 94 18 57.8	96 33 64.5
Sterling	91 40 63.8	89 24 62.0	92 48 70.7	90 45 76.0	93 42 72.2	83 32 52.0 82	4 38.1 66	6 39.8
Wakenfield *	56 10 31.8 65	0 29.3 67	2 34.9 92 28 58.0	95 38 62.6	98 54 72.6	102 58 75.8	104 48 75.2	96 42 72.2	86 32 55.1 85	9 41.0 68	7 38.7 104	0 53.95
Wellington	62 12 36.1 75	6 34.7 75	10 38.2 94 22 60.9	90 35 65.9	96 54 74.1	99 58 75.1
Wichita †	58 11 33.6 72	4 33.0 68	6 37.8 84 22 58.5	87 35 62.4	93 52 73.0	92 53 74.6	98 47 76.0	92 42 71.4	87 32 57.8 83	10 42.6 66	9 40.9 98	4 55.05

* Extremes of temperature, from observed readings.
† U. S. Weather Bureau station.

† Means, from maximum and minimum temperatures.
‡ Union Pacific railroad station.

EIGHTH BIENNIAL REPORT—METEOROLOGICAL.

Reports of the Kansas State Board of Agriculture

STATIONS.	January.		February.		March.		April.		May.		June.		July.		August.		September.		October.		November.		December.		Annual.													
	Maximum.	Minimum.	Maximum.	Minimum.	Maximum.	Minimum.	Maximum.	Minimum.	Maximum.	Minimum.	Maximum.	Minimum.	Maximum.	Minimum.	Maximum.	Minimum.	Maximum.	Minimum.	Maximum.	Minimum.	Maximum.	Minimum.	Maximum.	Minimum.	Mean.	Mean.												
	Maximum.	Minimum.	Maximum.	Minimum.	Maximum.	Minimum.	Maximum.	Minimum.	Maximum.	Minimum.	Maximum.	Minimum.	Maximum.	Minimum.	Maximum.	Minimum.	Maximum.	Minimum.	Maximum.	Minimum.	Maximum.	Minimum.	Maximum.	Minimum.	Mean.	Mean.												
Agricultural College.....	64	-26	22.2	64	12.34	6.77	10.38	5.85	26	51.7	90	38	57.8	102	43	74.3	106	50	77.3	106	46	74.6	97	37	69.7	93	23	55.7	72	13	39.8	67	-9	24.0	100	-26	51.68	
Alticon*.....	56	-18	22.8	58	20.34	6.73	9	36.5	84	32	33.7	87	40	63.7	92	50	74.1	96	60	78.8	100	54	73.6	91	44	64.0	85	30	53.8	53	23	42.6	67	-7	31.2	100	-13	52.45
Atchison†.....	73	-16	32.2	78	20.40	2.77	6	40.0	86	27	54.7	92	36	64.2	98	49	74.8	95	53	76.9	100	48	77.4	94	40	70.1	88	29	59.4	65	22	42.5	70	-9	31.0	100	-16	55.28
Columbus†.....	64	-22	27.0	66	16.38	2.76	3	39.3	86	26	53.7	86	40	61.2	100	48	74.8	100	54	77.4	99	52	75.9	93	45	70.4	89	33	58.6	69	20	42.2	68	-13	28.0	100	-22	53.89
Elko*.....	61	-13	27.2	64	16.38	5.74	2	40.0	84	30	53.5	84	38	61.1	94	49	75.9	97	58	77.4	99	53	75.2	89	46	69.8	85	34	65.0	66	7	28.4	100	-7	28.4			
Emporia.....	66	-23	23.9	67	13.38	6.75	10	41.8	84	30	53.2	87	37	57.4	96	45	73.4	104	57	77.9	101	50	76.6	95	40	68.6	87	27	61.7	69	19	42.1	64	-10	25.2	104	-28	53.37
Fort Riley†.....	64	-13	28.4	64	21.40	4.75	9	40.4	93	28	55.5	94	40	61.8	100	52	76.8	103	57	80.0	104	51	79.4	96	44	72.9	89	33	60.8	68	26	44.2	73	-6	31.7	103	-15	55.38
Grenola*.....	64	-13	28.4	64	21.40	4.75	9	40.4	93	28	55.5	94	40	61.8	100	52	76.8	103	57	80.0	104	51	79.4	96	44	72.9	89	33	60.8	68	26	44.2	73	-6	31.7	103	-15	55.38
Havensville*.....	58	-24	23.6	61	13.34	2.73	3	39.7	87	25	53.8	84	39	61.0	98	47	75.0	100	51	76.8	102	49	75.7	92	39	68.3	88	29	56.6	68	24	44.5	72	-6	32.4	106	-16	56.65
Horton†.....	56	-23	23.6	61	13.34	2.73	3	39.7	87	25	53.8	84	39	61.0	98	47	75.0	100	51	76.8	102	49	75.7	92	39	68.3	88	29	56.6	68	24	44.5	72	-6	32.4	106	-16	56.65
Independence†.....	62	-16	28	66	21.41	4.76	10	41.9	92	28	56.6	91	38	65.6	98	47	75.0	100	51	76.8	102	49	75.7	92	39	68.3	88	29	56.6	68	24	44.5	72	-6	32.4	106	-16	56.65
Kansas City.....	58	-19	24.4	61	11.36	6.79	13	38.2	79	27	52.5	84	40	60.6	98	47	75.0	100	51	76.8	102	49	75.7	92	39	68.3	88	29	56.6	68	24	44.5	72	-6	32.4	106	-16	56.65
Lawrence.....	58	-19	24.4	61	11.36	6.79	13	38.2	79	27	52.5	84	40	60.6	98	47	75.0	100	51	76.8	102	49	75.7	92	39	68.3	88	29	56.6	68	24	44.5	72	-6	32.4	106	-16	56.65
Leavenworth†.....	57	-20	25.9	61	12.36	4.78	12	37.6	78	29	51.8	82	38	59.0	94	47	74.2	98	54	76.2	98	51	76.2	91	42	69.6	86	32	58.4	66	21	41.0	67	-11	26.0	98	-20	52.52
Lebo†.....	65	-20	25.6	65	13.37	8.78	2	38.6	84	20	51.0	84	35	60.0	101	45	74.6	100	50	76.0	100	47	75.6	93	39	68.4	88	28	57.0	68	19	40.6	67	-10	27.4	100	-20	52.72
Manhattan*.....	58	-23	20.6	59	11.31	7.75	12	35.4	84	39	55.4	104	43	73.2	108	56	76.0	106	52	73.8	94	36	68.3	92	24	53.7
Marmaton*.....	58	-23	20.6	59	11.31	7.75	12	35.4	84	39	55.4	104	43	73.2	108	56	76.0	106	52	73.8	94	36	68.3	92	24	53.7
Morse†.....	57	-21	22.5	61	10.35	4.77	8	36.8	81	25	50.8	80	35	57.8	96	44	72.5	95	53	74.2	98	48	75.2	95	39	68.3	87	28	58.2	67	18	39.2	69	-15	25.6	98	-21	51.40
Oswego†.....	67	-18	32.5	66	20.41	6.78	6	41.2	91	27	56.6	92	35	64.7	99	46	75.6	103	53	78.2	108	57	78.7	84	28	56.6	68	21	44.9	72	-10	32.6
Pauline*.....	50	63	15	37.0	7.78	13	38.7	82	28	52.7	89	37	60.1	102	47	104	52	79.0	93	41	69.4	69	20	41.1	68	-4	29.4	
Sedan.....	65	-16	28.8	65	20.40	0.76	10	41.4	93	28	55.5	90	38	57.8	96	50	76.0	100	57	78.9	102	52	78.7	96	48	71.6	91	35	60.2	68	25	44.5	74	-8	30.5	102	-16	55.80
Seneca†.....	58	-34	19.5	59	13.2	0.74	7	35.9	79	24	47.1	97	46	74.8	100	54	76.8	98	51	76.0	92	44	70.5	86	30	59.3	67	19	41.7	66	-10	26.4
Topeka†.....	64	-20	25.6	66	12.38	0.75	2	38.6	92	21	54.2	85	35	62.4	98	44	73.9	101	53	75.8	101	48	76.8	92	41	69.0	15		
Toronto†.....	60	-23	24.0	62	12.37	2.77	10	38.5	83	23	52.5	82	37	59.6	100	45	72.4	98	49	75.8	96	45	74.9	94	38	68.2	88	26	57.3	69	14	40.6	69	-11	24.2	100	-23	52.05
Washburn College†.....	58	-17	25.6	60	11.36	8.80	12	37.6	80	30	52.5	81	38	59.8	95	48	74.0	98	55	75.9	99	52	76.6	94	46	70.1	87	32	59.0	67	22	40.0	69	-13	27.1	99	-17	52.92
Kansas City, Mo.†.....	58	-17	25.6	60	11.36	8.80	12	37.6	80	30	52.5	81	38	59.8	95	48	74.0	98	55	75.9	99	52	76.6	94	46	70.1	87	32	59.0	67	22	40.0	69	-13	27.1	99	-17	52.92

* Extremes of temperature, from observed readings.
† Means, from maximum and minimum temperatures.
‡ U. S. Weather Bureau stations.



Reports of the Kansas State Board of Agriculture

MAXIMUM, MINIMUM AND MEAN TEMPERATURES FOR 1892—MIDDLE DIVISION.																																							
STATIONS.	January.		February.		March.		April.		May.		June.		July.		August.		September.		October.		November.		December.		Annual.														
	Maximum.	Minimum.	Mean.	Maximum.	Minimum.	Mean.	Maximum.	Minimum.	Mean.	Maximum.	Minimum.	Mean.	Maximum.	Minimum.	Mean.	Maximum.	Minimum.	Mean.	Maximum.	Minimum.	Mean.	Maximum.	Minimum.	Mean.	Maximum.	Minimum.	Mean.												
Abilene†	65	-19	27.2	65	16	38.0	80	13	42.2	91	22	54.9	86	37	60.2	97	42	75.0	101	52	77.5	100	50	76.6	96	42	71.2	90	29	58.6	70	22	43.1	62	-8	24.8	101	-19	54.11
Antelope†	65	-22	24.4	62	15	36.4	75	4	39.5	90	19	52.7	90	34	60.5	100	45	75.5	101	62
Belleville†	66	...	71	5	41.8	87	18	54.2	88	28	55.4	100	45	75.5	101	62	
Burr Oak*	62	-21	...	56	1	...	68	3	...	88	18	...	78	38	...	90	43	
Cawker City*	68	-20	22.55	10	33.3	72	8	36.3	86	28	50.7	78	40	55.1	98	50	74.0	102	60	78.4	98	58	75.6	98	40	69.5	80	28	55.6	76	16	39.5	70	-4	27.1	102	-20	51.55	
Coldwater†	69	-13	29.6	...	83	-2	38.8	90	26	54.6	89	32	63.6	107	57	70.2	103	50	77.4	95	46	72.0	88	32	59.8	68	20	42.0		
Concordia (near)*	60	-35	21.2	56	7	32.2	75	7	35.1	
Concordia†	62	-24	24.4	59	10	34.0	75	9	37.8	86	24	51.3	84	36	55.8	99	43	73.2	104	53	76.8	101	48	75.7	98	38	70.1	80	28	57.7	72	16	41.3	57	-8	24.9	104	-24	51.92
Cunningham†	68	-15	26.4	66	13	34.7	81	-2	37.5	96	18	52.9	95	36	59.4	101	40	73.8	107	50	77.6	107	46	75.6	97	44	69.0	90	27	54.7	66	15	39.6	62	-5	24.2	107	-15	52.12
Greensburg†	82	-6	31.6	89	25	52.2	85	33	59.6	96	44	74.1	102	47	79.8	103	64	81.8	95	47	76.4	
El Dorado†	
Ellis*§	58	10	37.9	72	15	112	50	77.2	
Haltstead*	62	-18	25.7	62	16	35.7	
Hays City†	
Hesston†	73	-1	37.7	82	23	50.2	83	36	57.2	96	39	71.4	96	48	74.6	
Hutchinson†	74	-13	31.0	69	19	39.7	78	2	41.6	90	26	54.6	90	38	61.5	96	41	74.5	98	52	76.7	102	50	77.2	97	44	71.8	83	29	60.4	74	22	44.8	68	-5	28.4	102	-13	55.18
Kellogg†	68	-20	28.4	...	79	3	...	92	24	58.0	93	38	65.0	97	45	75.5	103	51	79.2	107	51	80.1	97	44	72.5	92	36	59.0	68	21	42.8	68	-11	30.4	
Kiowa†	72	-11	32.4	72	19	40.0	84	4	41.5	92	22	57.4	96	37	64.4	100	44	75.0	105	53	80.2	105	59	81.5	99	50	74.0	97	33	59.0	73	22	44.5	72	-2	28.5	105	-11	56.55
La Crosse†	74	-12	28.3	55	8	34.4	80	-1	37.9	92	31	52.9	85	38	58.0	98	42	75.1	104	55	80.4	104	53	79.7	97	45	71.2	
Lincoln*§	60	18	34.2	
Macksville*	75	-16	30.8	
Mankato.	
Marion†	
McPherson†	63	-18	25.8	63	15	36.6	77	-5	39.8	85	22	55.3	82	35	58.1	96	47	73.6	99	50	76.4	101	41	76.2	95	42	70.8		
Minneapolis*	58	-20	22.6	56	10	33.6	72	10	37.9	76	24	51.4	78	40	56.8	93	49	74.1	100	68	78.6	98	52	76.8	92	46	69.8	86	28	56.4	68	18	39.4	54	-8	24.5	100	-20	51.78
Phillipsburg†	70	2	31.6	
Plainville*§	60	16	...	78	10	...	90	34	...	82	40	59.7	
Pleasant Dale*	69	-16	24.4	59	-1	33.2	73	-3	35.4	90	24	50.0	84	35	54.3	
Rome†	65	-14	28.4	61	22	39.2	76	4	41.2	90	28	53.1	90	40	62.9	96	47	73.6	98	55	77.3	103	51	77.0	92	49	70.7	88	34	59.2	67	20	41.6	60	-8	27.3	108	-20	54.04
Salina†	59	-15	24.5	58	15	34.9	75	9	38.2	76	31	52.2	81	42	58.4	93	51	74.4	98	61	79.0	97	55	76.6	88	51	70.7	85	35	56.6	63	25	41.8	56	-6	26.9	98	-15	52.83
Springdale*
Sterling	
Wakefield*	61	-20	25.5	62	11	35.7	80	14	40.2	82	34	53.6	92	43	59.4	104	50	76.0	108	61	80.4	106	58	77.8	100	48	72.0	92	30	59.0	67	20	41.6	60	-8	27.3	108	-20	54.04
Wichita†	64	-19	29.1	66	19	38.5	76	5	39.6	85	29	54.6	88	38	61.7	95	46	74.9	98	53	77.4	100	53	77.5	95	47	71.6	89	33	59.6	68	23	44.0	67	-6	27.6	100	-14	54.68

* Extremes of temperature, from observed readings.
† Means, from maximum and minimum temperatures.

‡ U. S. Weather Bureau station.
§ Union Pacific railroad station.

EIGHTH BIENNIAL REPORT—METEOROLOGICAL.

285



Reports of the Kansas State Board of Agriculture

MAXIMUM, MINIMUM, AND MEAN TEMPERATURES FOR 1892—WESTERN DIVISION.

STATIONS.	January.		Febru- ary.		March.		April.		May.		June.		July.		August.		Septem- ber.		October.		November.		December.		Annual.														
	Maximum.	Minimum.	Maximum.	Minimum.	Maximum.	Minimum.	Maximum.	Minimum.	Maximum.	Minimum.	Maximum.	Minimum.	Maximum.	Minimum.	Maximum.	Minimum.	Maximum.	Minimum.	Maximum.	Minimum.	Maximum.	Minimum.	Maximum.	Minimum.	Maximum.	Minimum.													
Allison *	64	-18	18.9	59	0	28.8	76	-2	33.3	91	25	48.4	90	37	54.0	97	40	70.4	100	52	75.6	98	46	74.2	93	41	64.6	87	26	48.6	73	12	34.4				
Arkaton * †	66	12	31.2	82	1	38.0	94	24	55.0	91	35	59.7	104	48	79.1	104	48	75.8	97	40	70.6	88	27	56.3	71	16	42.3	71	-2	36.8			
Bucklin.			
Colby †.			
Collier * ‡.	76	-10	...	66	10	94	29	...	92	37	53.6	102	47	70.0	106	54	76.6	101	53	74.4	100	46	67.7	90	30	54.4	62	8	28.2			
Dodge City † ‡.	71	-11	28.9	63	12	34.7	80	-6	36.5	92	26	51.8	83	34	57.8	101	43	71.9	102	52	77.0	103	48	76.0	96	40	69.8	88	30	56.2	71	20	42.4	66	0	25.6	108	-11	52.38
Englewood *.	70	-8	31.6	66	15	38.4	83	5	40.9	88	30	55.6	92	42	62.0	101	50	77.3	105	63	81.9	105	67	77.8	99	45	72.0	90	35	56.8	71	18	42.8	67	-12	35.8	106	-12	55.24
Eureka Ranch †.	71	-19	25.6	60	1	35.6	82	-5	35.5	98	19	49.8	85	32	55.0	101	37	70.8	107	48	76.6	102	44	75.6	96	36	67.4	92	22	56.0	72	8	40.6	57	-7	35.0	107	-19	51.12
Gibson *	73	-18	26.7	55	2	31.4	80	-1	36.2	94	23	50.0	88	31	53.8	106	39	71.9	108	48	77.4	107	44	76.1	98	40	67.4	90	23	54.2	71	11	38.2	56	0	25.2	108	-18	50.67
Gove City *	74	-11	26.4	59	5	30.7	80	0	35.4	91	30	50.4	96	37	56.3	100	50	69.0	108	52	76.0	100	54	75.6	100	40	67.9	91	28	55.4	77	14	39.4	58	-2	25.0	108	-11	50.62
Grainfield * ‡.	68	-12	...	53	4	...	74	2	36.4	86	28	49.8	84	33	52.8	96	46	67.8	104	54	72.9	98	50	75.4	93	47	65.8	86	32	53.5	70	16	39.6	60	4	20.8	
Grinnell * ‡.	70	-12	...	62	12	...	78	9	...	90	30	53.6	86	36	54.6	100	50	...	107	59	81.3	102	60	...	90	56	74.5	90	34	...	70	20	44.1	60	0	29.8	
Lakin †.	72	-16	27.3	63	7	33.1	79	-11	39.5	95	19	52.4	93	27	58.2	109	33	72.4	109	44	78.0	111	46	76.6	102	39	69.3	93	22	56.6	73	15	41.7	69	-2	30.0	111	-16	52.92
Leoti †.	72	-14	26.3	61	-2	32.1	76	-4	37.8	92	20	50.5	94	29	55.8	101	36	69.7	96	30	66.0	91	24	54.5	73	9	39.6	70	1	26.4	
McAllister * ‡.	68	-14	...	60	6	...	70	2	36.8	84	25	49.9	96	34	54.5	102	52	70.6	110	50	73.6	
Monument * ‡.	64	-24	...	8	25.5	72	-2	34.4	86	24	49.1	88	30	51.5	98	40	70.3	106	52	72.1	103	50	75.4	96	48	70.8	86	27	55.5	68	10	40.6	58	-9	20.7		
Morland †.	94	12	49.1	90	32	54.9	105	36	70.5	106	47	75.8	104	48	74.2	101	36	67.9	99	21	55.0	77	9	40.4	62	-7	25.6	
Morton †.	70	-12	28.8	70	14	35.1	80	0	34.8	92	24	54.6	92	36	62.1	102	40	75.1	101	55	78.7	104	52	78.0	97	42	71.6	90	31	59.6	71	24	46.4	72	3	30.8	104	-12	54.63
New England Ranch † ‡.	70	-13	27.0	92	25	50.4	88	32	54.4
Norton †.	68	-16	24.8	54	-2	30.8	92	23	49.2	89	34	54.6	99	39	70.1	
Oakley * ‡.	68	-12	29.6	56	12	34.5	78	12	39.5	94	34	57.2	90	38	57.6	
Oberlin.	
Ogallah * ‡.	69	11	...	82	10	95	37	55.4	87	40	
Page City * ‡.	66	-12	...	54	8	30.6	72	-2	34.1	88	30	47.4	88	30	53.8	96	46	70.3	105	61	80.8	103	56	75.3	99	45	63.4	92	27	55.6	69	25	37.7	62	-3	28.6	
Quinter * ‡.	70	-9	...	58	10	...	77	8	...	90	32	54.3	84	40	
Sharon Springs * ‡.	62	-8	75	8	38.2	89	24	51.8	98	30	54.3	98	
Shields †.	81	-10	33.2	80	1	38.2	74	-7	40.6	91	23	51.0	92	32	56.2	
Syracuse †.	
Tribune †.	68	-10	27.0	60	7	33.5	73	-5	33.0	90	24	50.8	94	30	54.6	103	35	69.4	106	51	75.8	107	45	74.6	94	87	68.4	88	26	52.8	71	12	40.8	70	-3	28.2	107	-10	50.88
Ulysses †.	77	-5	30.6	75	14	41.8	76	2	38.0	90	30	55.1	92	38	62.0	99	45	73.6	105	57	78.8	109	60	83.3	103	45	71.4	93	34	60.2	79	20	44.6	70	5	30.5	109	-5	55.83
Wa Keeney * ‡.	70	-10	27.4	54	14	...	76	6	...	88	30	...	86	38	56.3	98	46
Wallace * ‡.	70	-11	...	60	10	...	78	-2	33.0	94	25	50.3	85	34	55.6	98	40	69.0	106	56	77.4	106	54	78.4	96	50	68.4	90	30	52.1	74	20	41.3	72	5	27.4	
Weakay * ‡.	70	-10	...	65	2	35.2	71	-10	34.4	90	24	50.6	88	35	55.2	99	50	
Winona * ‡.	69	9	30.0	71	5	
Buffalo Park * ‡.	75	-11	...	60	12	...	70	

* Extremes of temperature, from observed readings.
† Means, from maximum and minimum temperatures.

‡ U. S. Weather Bureau station.
§ Union Pacific railroad stations.

¶ Post office, Ellis.
‡ Post office, Grainfield.

Reports of the Kansas State Board of Agriculture

EIGHTH BIENNIAL REPORT—METEOROLOGICAL.

287

PRECIPITATION TABLE FOR 1891—EASTERN DIVISION.

STATIONS.	January.	February.	March.	April.	May.	June.	July.	August.	September.	October.	November.	December.	Annual.
Agricultural Col.	1.63	.84	2.24	.52	4.79	5.96	5.51	.98	1.46	2.45	.26	1.09	27.73
Altona.	1.00	2.50	1.75	2.71	2.79	12.14	1.97	.92	.87	.42	1.03	1.51	29.61
Atchison.
Columbus.	1.10	1.90	1.70	4.43	4.05	4.25	2.19	.41	1.47	2.96	2.01
Elco.	1.15	2.02	3.35	3.55	5.85	11.17	3.19	1.35	.70	1.52	T*	3.49	37.34
Elk Falls.	.82	1.44	2.10	2.58	4.34	10.36	1.92	.76	.7988	.82
Emporia.	1.07	1.87	2.51	2.24	6.20	10.28	2.62	4.47	.86	1.30	.35	1.15	34.92
Fort Riley.	2.50	1.10	5.15	6.20	2.30	.60	2.30	2.99	.06	.85	25.93
Grenola.	1.20	1.70	2.20	3.20	3.00	5.60	1.95	T	1.40	.40	.20	1.35	22.20
Havensville.	2.00	.50	5.10	5.75	5.25	5.04	2.85	.80	1.77	2.18	.48	.87	32.59
Horton.	2.96	.97	1.63	4.10	4.57	8.18	3.06	2.72	.97	1.46	.79	2.22	33.63
Independence.	1.75	2.25	1.51	3.25	3.36	10.84	1.50	.33	1.32	.94	1.14	2.41	30.60
Kansas City.	2.08	1.46	3.53	3.74	6.42	5.48	2.61	6.50	.36	1.04	1.19	2.02	36.43
La Harpe.	1.21	2.30	2.57	3.16	3.31	11.59	4.63	1.68	.15	.51	.77
Lawrence.	1.43	1.98	3.04	5.79	6.55	10.15	6.40	1.18	2.23	1.35	.81	2.41	43.32
Leavenworth.	2.66	1.39	3.16	3.9557	1.39	.80	1.71	37.71
Lebo.	2.18	2.11	3.63	3.24	7.06	8.77	7.49	1.07	1.21	1.08	.94	1.73	40.51
Manhattan.	2.21	1.11	3.10	1.89	4.79	7.85	4.97	.97	1.40	2.40	.28	.96	33.23
Marmaton.	1.17	2.72	3.10	6.75	4.24	14.70	4.50	3.35	1.50	.97	1.07	1.22	45.29
Morse.	2.60	1.50	3.42	4.82	6.15	6.56	2.92	4.73	1.23	.65	1.67	2.16	38.41
Oswego.	2.07	2.07	1.90	4.60	2.83	7.63	1.54	.95	.87	1.95	1.57	1.74	29.54
Pauline.	1.05	1.20	2.20	3.83	7.31	9.77	4.01	1.74	.50	1.20	.20	2.50	35.51
Sedan.	1.80	1.60	1.78	2.33	2.54	6.17	1.88	.39	.97	.30	.65	2.90	23.20
Seneca.	1.97	1.11	3.12	4.75	5.92	5.19	4.74	2.67	.59	3.01	.49	1.01	35.17
Toronto.	1.74	2.07	2.84	3.60	4.66	9.34	1.15	.25	.69	.66	.65	1.21	28.86
Washburn Col.	1.91	2.49	3.72	6.86	10.50	8.06	2.31	1.00	1.58	.64	1.63	43.28
Kansas City, Mo.	2.08	3.82	3.62	6.85	6.19	2.34	6.25	.36	.85	.95	1.54	37.05

MIDDLE DIVISION.

Ablene.	1.32	1.05	5.55	1.63	4.90	8.08	.63	2.47	3.34	T	1.18
Alton.	1.31	.95	6.50	3.04
Burr Oak.	2.37	.68	1.45	3.00	2.75	4.99	6.37	2.50	5.38	7.5085
Cawker City.	1.30	1.00	4.00	1.60	3.40	3.90	3.70	.50	5.40	5.10	.10	.50	30.50
Coldwater.	4.35	1.27	1.90	2.77	.60
Near Concordia.	1.75	.69	3.80	1.96	4.00	3.91	3.92	.62	3.53	6.14	.20	1.39	31.91
Concordia.	2.15	.59	3.72	3.02	4.12	6.94	3.46	.69	3.14	5.24	.20	1.20	34.47
Cunningham.	1.58	.68	3.57	.60	4.45	3.60	7.15	1.22	1.99	3.60	.39	1.27	30.10
Downs.	2.61	.77	5.12	2.64	4.54	6.00	5.98	2.27	5.87	6.12	.50	1.44	43.86
Ellis.	.63	.04	1.79	1.87	4.25	2.93	4.62	3.00	9.00
Halstead.	1.65	1.24	3.70	1.19	5.09	7.40	5.73	.56	.9822	1.28
Hutchinson.	2.00	1.24	3.57	1.04	3.96	1.47	2.86	2.48	.32	.96
Kellogg.	.91	2.85	2.61	10.25	6.42	11.93	.58	1.76	1.12	1.04
Kingman.	4.35	1.50	4.37	.45	3.79	4.88	7.45
Kiowa.47	1.75
Kirwin.	.50	.20	2.95	2.65	4.25	5.97	5.82	1.15	2.60	2.70	1.20	29.99
La Crosse.	.96	.77	3.04	1.94	3.28	3.47	5.69	1.35	2.12	6.40	.08	.33	29.43
Larned.	4.37	4.87	.62	1.15	3.10
Lincoln.	1.10
Macksville.	.98	.50	2.20	.25	3.62	3.50	7.12	2.37	2.90
Mankato.	3.30	.60	1.20	3.00	6.15	5.20	1.40	3.62	3.75	.25
McPherson.	.79	1.17	3.57	1.23	7.58	4.57	.59	2.56	3.14	.16	.01
Medicine Lodge.	3.98	6.48	1.77	3.90	.57
Minneapolis.	1.15	.72	3.42	1.60	4.60	4.25	8.00	.30	4.65	5.20	.05	1.47	35.43
Phillipsburg.78	1.22
Plainville.	1.06	.05	8.38	6.00	2.65	1.10
Pleasant Dale.	.90	1.00	3.87	2.45	2.70	6.50	4.50	2.20	2.26	5.13	.03	1.30	32.84
Rome.	1.03	2.06	3.01	3.66	6.42	5.33	4.40	.52	1.06	1.28	.79	2.82	32.38
Salina.	1.38	T	2.31	.88	6.63	3.90	6.50	.71	3.75	1.19	.11	.82	28.18
Springvale.	2.90	.75	6.00	.35	8.00
Sterling.79	3.08	4.8375	2.39	1.60	.02	1.38
Wakefield.	2.03	.44	4.75	1.95	5.51	4.62	3.60	.62	3.72	3.73	.28	1.40	32.65
Wellington.	1.95	2.05	3.86	2.40	8.90	5.45	10.06
Wichita.	2.66	1.95	3.36	1.26	9.15	4.90	5.89	.40	.72	2.95	.47	1.12	34.53
Wilson.	.87

WESTERN DIVISION.

Allison.	1.36	.08	4.92	3.30	6.20	6.34	5.86	1.66	3.55	1.29	.28	1.95	36.79
Bucklin.	1.20	.50	3.50	.70	7.90	6.50	6.70	.95	5.45	4.50	.10	.70	38.70
Buffalo Park.	1.08	.35	2.15	2.85	5.50	5.25	4.25	1.50	3.75	1.00	T	1.40	29.08
Collyer.	.82	.08	3.35	1.27	4.00	5.80	3.90	1.40	3.20	.70	1.75

* T indicates trace of precipitation.

Reports of the Kansas State Board of Agriculture

288

KANSAS STATE BOARD OF AGRICULTURE.

PRECIPITATION TABLE FOR 1891—WESTERN DIVISION—Concluded.

STATIONS.	January...	February...	March....	April.....	May.....	June.....	July.....	August...	September..	October...	November..	December..	Annual...
Dodge City.....	.98	.27	3.35	2.76	3.36	6.27	5.16	1.36	4.56	3.33	.12	.85	32.37
Englewood.....	.57	.26	2.76	.29	5.33	7.50	6.17	1.48	3.72	4.19	.29	.94	33.50
Eureka Ranch...	1.05	.35	1.65	.92	2.05	4.84	4.09	1.29	4.73	1.59	.13	1.52	24.21
Gibson.....												1.41	...
Gove City.....	1.29	.31	1.85	2.54	3.46	4.21	2.34	.39	2.95	.72		1.13	21.19
Grainfield.....	1.79	1.75	3.92	2.40	6.08	6.02	3.90	1.50	4.20	.50		.84	32.40
Grinnell.....	1.30	.05	1.80	2.05	5.50	3.45	4.90	.30	3.12			1.94	...
Lakin.....		.10	1.90	.70	3.15	5.02	2.50		4.00	.30	.10	1.20	...
Leoti.....	.98	.08	2.00	1.56	2.00	6.52	3.50	1.00	2.13		T	1.24	21.01
McAllaster.....	1.70		3.40	1.46	3.75	4.60	4.95		2.10			1.90	...
Monument.....	.92	.22	2.84	2.85	3.90	5.60	4.25	.50	1.75	.20		1.95	...
Morton.....					5.23	6.20	2.25	1.80	8.60	2.55	.50	.74	...
New Eng. Ranch.							4.87	1.34	2.60	.41			...
Norton.....	1.25		4.03	3.41		10.84				1.46	.37		...
Oakley.....		.08			4.50								...
Oberlin.....	.62	.05	7.23	7.58	6.70	6.56	5.34	2.46	1.40	1.03	.10	2.15	41.27
Ogallah.....	.72	.05	1.23		3.17	6.50	5.50	.50	6.00	1.70			...
Page City.....	.30		1.00	2.10	1.50		1.25	1.00	2.25	T	T	1.08	...
Quinter.....	.87	.05	1.40	.75	3.50	3.75	2.25						...
Sharon Springs..	1.30	.20	2.25	1.60	3.50								...
Shields.....	1.10	.11	3.36		3.70			.83	3.14	.78	.10	.59	...
Tribune.....	1.30	T	2.57	2.83	2.94	5.57	3.83	1.19	2.31	.16	T	1.31	24.01
Ulysses.....						4.32	6.65	1.23	3.98	.55	.45	1.14	...
Wa Keeney.....	2.00	.22	1.91	1.06	2.40	4.69	2.43	.56	4.00	.80		1.22	...
Wallace.....		.35	1.90	1.20	2.51	5.25	4.27	.48	1.80	.06	.01	1.50	...
Weskan.....	.90	.10	1.20	.50	2.27	2.32	4.85	.80	1.40	T	T	1.68	16.02

PRECIPITATION TABLE FOR 1892—EASTERN DIVISION.

STATIONS.	January...	February...	March....	April.....	May.....	June.....	July.....	August...	September..	October...	November..	December..	Annual...
Agricultural Col.	.78	2.95	4.60	2.91	6.62	.32	3.88	4.32	.36	1.32	.65	1.75	30.46
Altoona.....	2.25	6.14	5.07	2.68	8.29	3.27	3.52	4.48	.97	5.78	.60	2.59	45.64
Atchison.....	.74	2.68	4.62	2.95	5.86	2.81	5.02	3.22	1.23	1.65	1.26	1.75	33.79
Columbus.....	1.98	5.26	5.30	5.30	10.63	4.37	2.53	2.88	.69	5.80	.92	4.06	49.92
Elco.....	.45	3.30	4.91	1.10	5.15	1.69	5.50	4.20	1.20	2.64	.22	2.84	33.20
Elk Falls.....	.15	6.25	4.39	.51	8.38	2.01	2.59	2.55	.99	4.46	.87	2.15	35.30
Emporia.....	.25	4.15		2.60	6.70	1.35	5.30	4.78	1.75	2.75	.10	2.95	...
Fort Riley.....	.40	2.83	4.45	1.98	8.00	.92	3.48	4.79	1.61	1.64	1.20	2.34	33.64
Grenola.....	1.70	5.55	4.60	.55	8.30	1.90	2.05	2.80	1.80	4.25	.25	1.30	35.05
Havensville.....	.68	.75	5.64	2.59	8.18	1.23	5.23	3.60	1.70	1.45	1.20	2.60	34.85
Horton.....	.90	.92	5.33	4.42	6.87	1.73	4.14	3.11	.80	.90	1.13	2.01	32.26
Independence...	1.46	4.88	5.54	4.71	10.64	2.70	3.55	4.22	.82	4.22	.59	3.00	46.33
Kansas City.....	2.02	4.10	5.90	3.84	7.22	2.59	3.61	2.05	3.40	4.72	1.91	1.53	42.89
Lawrence.....	.83	4.96	5.72	2.70	8.51	1.23	6.47	3.30	2.32	3.48	.98	1.83	42.33
Leavenworth...	1.95	3.65	4.09	4.90	8.66	2.55	3.42	3.54	1.23	2.80	1.53	1.77	40.09
Lebo.....	1.25	4.54	4.49	2.69	7.34	2.00	4.03	5.59	1.91	2.96	.55	2.54	39.89
Manhattan.....	.61	3.14	3.85		6.77	.26	3.75	3.97	.39	1.24			...
Marmaton.....					10.74	4.05	2.17	1.77	1.18	2.80	.83	2.54	...
Morse.....	3.05	4.79	4.37	3.36	7.30	2.80	5.88	2.23	2.35	3.32	1.51	2.55	43.41
Oswego.....	.45	5.48	5.42	4.78	9.72	3.55	1.74	2.42		4.69	.43		...
Pauline.....	.48	4.45	3.72	2.20	9.50		6.12		1.12			1.75	...
Sedan.....	.90	4.51	3.62	1.52	10.26	2.09	2.00	3.40	1.35	6.94	.24	3.38	40.21
Seneca.....	.66	2.03	5.39	4.31	7.53	2.42							...
Topeka.....					14.10	.73	6.37	4.14	.90	1.46	.60	1.92	...
Toronto.....	1.92	6.31	5.08	2.17	11.83	2.21	4.54	5.39	2.31	4.14	.30	2.48	48.68
Washburn Col...	1.21	3.33	4.53	2.17	14.10	.80	5.82	5.14	.90	.95	.54	1.66	41.15
Kansas City, Mo.	2.56	4.27	4.15	4.32	8.28	2.73	4.76	1.55	4.05	3.48	1.62	1.70	43.47

MIDDLE DIVISION.

STATIONS.	January...	February...	March....	April.....	May.....	June.....	July.....	August...	September..	October...	November..	December..	Annual...
Abilene.....	.60	3.17	4.83	1.37	6.04	.69	3.06	2.75	1.97	2.93	.61	2.79	30.81
Antelope.....	.47	3.10	3.07	.84	7.06	1.61		3.33					...
Belleville.....		.78	2.46	2.16	9.30	2.13	6.51	2.09		1.01			...
Burr Oak.....	.35	3.00	2.35	1.38	7.12	.93	5.38			1.62		.85	...

Reports of the Kansas State Board of Agriculture

EIGHTH BIENNIAL REPORT—METEOROLOGICAL.

289

PRECIPITATION TABLE FOR 1892—MIDDLE DIVISION—Concluded.

STATIONS.	January..	February..	March.....	April.....	May.....	June.....	July.....	August....	September..	October....	November..	December..	Annual....
Cawker City.....	.20	6.00	2.55	1.40	5.70	.60	3.00	1.3020	.20	.50	21.65
Coldwater.....	.20	4.16	.22	4.70	1.03	2.32	.67	2.44	.70
Near Concordia..	.51	2.36	3.72
Concordia.....	.53	2.32	3.81	1.56	9.51	1.23	3.30	3.04	.85	.85	.44	1.19	28.41
Cunningham.....	.08	2.21	4.59	.27	4.27	1.40	1.24	3.56	1.54	3.05	.32	1.85	23.38
Downs.....	.50	2.43	3.27	1.95	6.90	.43	2.96	1.81	.34	.71	.40	1.67	23.37
El Dorado.....	1.51	.21
Ellis.....	2.40	1.80	.88	4.50	1.75
Halstead.....	.16	3.28
Hays City.....	1.13	3.92	5.08	.40	.52	.40	1.10
Hesston.....	3.75	1.27	6.23	2.30	3.63	7.76	2.22	.18
Hutchinson.....	.30	3.56	2.32	1.15	4.78	3.26	3.86	1.51	.79	3.43	.49	2.01	27.46
Kellogg.....	.65	4.05	5.00	3.20	12.30	4.42	2.88	4.10	3.99	4.36	.62	2.35	47.92
Kiowa.....	.13	2.78	3.05	.35	5.94	1.42	3.13	2.31	1.45	2.26	.35	2.47	25.64
Kirwin.....	.43	1.56	1.41	1.85	5.30	1.26	4.30	3.15	1.80	.55	.34	21.45
La Crosse.....	.30	1.51	3.06	.58	4.68	2.11	2.66	3.71	.61	1.00
Lincoln.....	6.75	3.75
Macksville.....	.14	1.87	2.24	2.00
Mankato.....	4.50	5.28	1.00	1.00
Marion.....	.14	2.69	2.24
McPherson.....	.14	3.05	2.77	1.14	5.88	4.67	2.86	3.14	1.11	2.00
Medicine Lodge..	.02	2.67	3.31	.49	4.65	2.85	.76	2.42	.84
Minneapolis.....	.40	2.05	4.30	1.65	4.90	1.00	2.45	2.15	.40	.75	.41	1.39	21.85
Phillipsburg.....	2.08	4.70	2.21	2.43	2.6162	.12
Plainville.....	2.95	2.00	7.25	2.80	3.70
Pleasant Dale.....	.50	2.09	3.86	1.20	3.99	3.00	3.11	.83	.90	.19	.63
Rome.....	3.96	4.39	2.65	7.03	1.42	2.79	1.71	3.38	3.54	.30	2.73
Salina.....	.18	2.01	3.28	1.29	5.75	.92	2.87	4.49	.83	2.22	.32	2.52	26.68
Springvale.....	13.50	3.00
Sterling.....10	3.78	3.89	6.32	.65	1.72	1.44	.26
Wakenfield.....	.12	3.17	5.93	1.33	5.41	.69	3.54	5.65	.69	2.55	.76	2.75	32.59
Wichita.....	.31	2.62	4.03	2.05	5.83	1.70	2.75	4.06	2.12	2.52	.24	1.71	29.94
Greensburg.....	1.36	2.47	.21	5.82	3.36	.72	3.43	.28	2.68	1.45

WESTERN DIVISION.

Allison.....	.16	1.88	1.32	1.52	5.88	.68	4.00	4.15	.05	1.54	.51
Arkalon.....	2.00	1.97	.31	4.58	1.34	2.19	.62	1.65	.48	1.50
Buffalo Park.....	.30	1.10	1.20	.21	5.22	1.29	3.87	3.79
Bucklin.....	.10	1.40	2.45	.45	7.45	.90	.70	2.10	.25	2.55	.40	1.10	19.85
Colby.....	3.98	4.13	.02	.96	.18	.68
Collyer.....	.15	1.25	3.80	2.50	6.40	5.20	T	T
Dodge City.....	.25	1.01	2.62	.40	3.23	3.34	.66	4.69	1.04	.73	.31	1.38	19.66
Englewood.....	.04	1.83	2.80	.28	5.97	.23	1.64	1.76	.85	2.10	.46	1.10	19.06
Eureka Ranch.....	.32	1.81	2.06	.92	4.87	2.22	4.53	2.93	.07	.60	.34	.63	21.30
Gibson.....	.20	.63	2.07	1.74	5.14	1.34	3.53	6.96	1.03	.12	.30	.40	23.46
Gove City.....	.37	1.90	1.51	.80	5.03	2.76	5.86	4.11	.51	.30	.50	1.40	25.05
Grainfield.....	.30	.80	3.45	.27	8.40	1.70	4.20	2.32	T40
Grinnell.....	.47	.75	1.30	.62	5.00	.83	2.90	1.75	T	T	.38
Lakin.....	.10	.40	2.00	.20	4.40	.60	1.13	.15	.03	.02	T	.50	9.53
Leoti.....	.15	.95	2.35	.66	3.68	1.09	T	.60
McAllister.....	.25	1.72	1.80	.70	5.80	.93	4.40	3.50
Monument.....	.30	1.00	.93	1.60	5.75	1.30	3.15	2.9033	.10	.81	18.07
Morland.....	1.48	4.34	1.10	4.95	3.34	.03	.42	.30	.32
Morton.....	.25	.50	2.30	.60	2.30	1.39	3.59	1.71	.12	.63	.46	.40	14.25
New Eng. Ranch.....67	4.35	4.66
Norton.....	.30	1.28	1.74	1.93	5.38	.79
Oakley.....	.25	2.70	1.25	3.11	1.25	2.60	3.92
Oberlin.....	.50	2.37	1.92	1.75	6.37	2.28	3.92	2.77	.06	.52	.72	1.10	24.28
Ogallah.....	2.41	1.40	T	4.60	1.50	2.25
Page City.....	.08	.90	.93	.90	6.00	1.25	2.5025
Quinter.....	1.00	1.30	.25	7.60	2.90	5.50	6.5038	.70	.81
Sharon Springs.....	.45	2.20	.70	1.00	4.50
Shields.....	.02	1.14	1.43	.48	7.29	3.75	4.12	1.25	.1715
Syracuse.....64	.42	.15
Tribune.....	.15	.46	2.80	.77	4.31	1.55	.65	2.96	.03	.40	.04	T	14.12
Ulysses.....	.73	.52	1.30	.24	4.67	1.11	2.45	.68	.50	.2665	13.11
Wa Keeney.....	.20	1.30	1.47	.50	1.10	3.10	2.96	1.5030	.40
Wallace.....	.13	.50	.90	1.07	6.00	2.10	1.75	1.5010	.10	14.15
Weskan.....	.15	.99	1.40	.70	5.85	2.90	1.50	1.8025	.10	.20	15.84
Winona.....80	.80	1.40	1.20	1.40	2.20



POSTAL GUIDE FOR KANSAS.

AN ALPHABETICAL LIST OF POST OFFICES IN THE STATE,
JANUARY 1, 1893.

POST OFFICE.	COUNTY.	POST OFFICE.	COUNTY.	POST OFFICE.	COUNTY.
Abbyville.....	Reno.	Arispie.....	Pottawatomie.	Beattie.....	Marshall.
Abilene, c. h.....	Dickinson.	Arkalon.....	Seward.	Beaumont.....	Butler.
Achilles.....	Rawlins.	Arkansas City.....	Cowley.	Beaver.....	Sheridan.
Ackerland.....	Leavenworth.	Arlington.....	Reno.	Beaverton.....	Rawlins.
Ada.....	Ottawa.	Arma.....	Crawford.	Bedford.....	Stafford.
Admire.....	Lyon.	Arrington.....	Atchison.	Beeler.....	Ness.
Adrian.....	Jackson.	Arvonia.....	Osage.	Bellaire.....	Smith.
Aetna.....	Barber.	Asherville.....	Mitchell.	Bellefont.....	Ford.
Agenda.....	Republic.	Ashland, c. h.....	Clark.	Belle Plaine.....	Sumner.
Agra.....	Phillips.	Ashton.....	Sumner.	Belleville, c. h.....	Republic.
Agricola.....	Coffey.	Ash Valley.....	Pawnee.	Belmont.....	Kingman.
Ainsworth.....	Wichita.	Assaria.....	Saline.	Beloit, c. h.....	Mitchell.
Air.....	Lyon.	Astor.....	Greeley.	Belpre.....	Edwards.
Akron.....	Cowley.	Atchison.....	Atchison.	Belvidere.....	Kiowa.
Alamota.....	Lane.	Athelstane.....	Clay.	Belvoir.....	Douglas.
Alanthus.....	Gove.	Athens.....	Jewell.	Beman.....	Pottawatomie.
Albert.....	Barton.	Athol.....	Smith.	Bendena.....	Morris.
Albia.....	Washington.	Atlanta.....	Cowley.	Benedict.....	Doniphan.
Albion.....	Harper.	Attica.....	Harper.	Bennington.....	Wilson.
Alburtis.....	Morris.	Atwater.....	Meade.	Ben's Ranch.....	Ottawa.
Alcoma.....	Rooks.	Atwood, c. h.....	Rawlins.	Bentley.....	Ellsworth.
Alcyone.....	Sheridan.	Auburn.....	Shawnee.	Benton.....	Sedgwick.
Alden.....	Rice.	Augusta.....	Butler.	Bentley.....	Butler.
Alexander.....	Rush.	Augustine Springs.....	Logan.	Ben Wade.....	Pawnee.
Alfred.....	Douglas.	Auline.....	Marion.	Berlin.....	Bourbon.
Aliceville.....	Coffey.	Austin.....	Neosho.	Bern.....	Nemaha.
Alida.....	Geary.	Aurora.....	Cloud.	Bernal.....	Reno.
Allamead.....	Lincoln.	Avery.....	Reno.	Berryton.....	Shawnee.
Allegan.....	Rice.	Avilla.....	Comanche.	Berwick.....	Nemaha.
Allen.....	Lyon.	Avoca.....	Jackson.	Bethel.....	Wyandotte.
Alleppo.....	Sedgwick.	Axtell.....	Marshall.	Beulah.....	Crawford.
Alliance.....	Ellsworth.	Bacon.....	Lincoln.	Beverly.....	Lincoln.
Allison.....	Decatur.	Badger Creek.....	Lyon.	Big Bend.....	Phillips.
Alma, c. h.....	Wabaunsee.	Bagley.....	Montgomery.	Bigelow.....	Marshall.
Almena.....	Norton.	Baileyville.....	Nemaha.	Big Springs.....	Douglas.
Alpha.....	McPherson.	Baker.....	Brown.	Birch.....	Sedgwick.
Alta.....	Harvey.	Bala.....	Riley.	Bird City.....	Cheyenne.
Altamont.....	Labette.	Baldwin.....	Douglas.	Birley.....	Chase.
Alta Vista.....	Wabaunsee.	Ballard's Falls.....	Washington.	Birmingham.....	Jackson.
Alton.....	Osborne.	Bancroft.....	Nemaha.	Bishop.....	Jewell.
Altoona.....	Wilson.	Banner.....	Trego.	Bison.....	Rush.
Amador.....	Butler.	Bannock.....	Edwards.	Bitter Creek.....	Sumner.
Amber.....	Barber.	Barclay.....	Osage.	Black Jack.....	Douglas.
Amboy.....	Rooks.	Barnard.....	Lincoln.	Blackstone.....	Sumner.
America City.....	Nemaha.	Barnes.....	Washington.	Black Wolf.....	Ellsworth.
Americus.....	Lyon.	Barnesville.....	Bourbon.	Blaine.....	Pottawatomie.
Ames.....	Cloud.	Barrett.....	Marshall.	Blakeman.....	Rawlins.
Andale.....	Sedgwick.	Bartlett.....	Coffey.	Block.....	Miami.
Anderson.....	Smith.	Basehor.....	Labette.	Bloomington.....	Osborne.
Anderson.....	Butler.	Bashan.....	Leavenworth.	Blue Hill.....	Mitchell.
Angola.....	Labette.	Bassettville.....	Lincoln.	Blue Mound.....	Linn.
Annelly.....	Harvey.	Bateham.....	Decatur.	Blue Rapids.....	Marshall.
Anness.....	Sedgwick.	Battle Hill.....	Clay.	Bluff City.....	Harper.
Anson.....	Sumner.	Bavaria.....	McPherson.	Bogue.....	Graham.
Antelope.....	Marion.	Baxter Springs.....	Saline.	Boicourt.....	Linn.
Anthony, c. h.....	Harper.	Bayard.....	Cherokee.	Bolling.....	Leavenworth.
Antrim.....	Stafford.	Bayne.....	Allen.	Bolton.....	Montgomery.
Appanoose.....	Douglas.	Bayneville.....	Lincoln.	Bonaccord.....	Dickinson.
Appomattox.....	Grant.	Bazaar.....	Sedgwick.	Bond.....	Douglas.
Aral.....	Crawford.	Bazine.....	Chase.	Bone Springs.....	Reno.
Arcadia.....	Wyandotte.	Beagle.....	Ness.	Bonner Springs.....	Wyandotte.
Argonia.....	Sumner.	Beardsley.....	Miami.	Bonita.....	Johnson.
			Rawlins.	Booth.....	Reno.

Reports of the Kansas State Board of Agriculture

EIGHTH BIENNIAL REPORT—POSTAL GUIDE.

291

POSTAL GUIDE FOR KANSAS—CONTINUED.

POST OFFICE.	COUNTY.	POST OFFICE.	COUNTY.	POST OFFICE.	COUNTY.
Border.....	Stanton.	Cawker City....	Mitchell.	Comiskey.....	Morris.
Borin.....	Decatur.	Cecil.....	Labette.	Concord.....	Sumner.
Bosna.....	Trego.	Cedar Bluffs....	Decatur.	Concordia, c. h..	Cloud.
Boston Mills....	Cherokee.	Cedar Ford.....	Butler.	Conductor.....	Grant.
Bow Creek.....	Phillips.	Cedar Junction..	Johnson.	Conkling.....	Pawnee.
Boyle.....	Jefferson.	Cedar Point.....	Chase.	Connor.....	Wyandotte.
Bradford.....	Wabaunsee.	Cedar Vale.....	Chautauqua.	Conquest.....	Wichita.
Bradley.....	Chautauqua.	Cedarville.....	Smith.	Constant.....	Cowley.
Brainerd.....	Butler.	Cedron.....	Lincoln.	Conway.....	McPherson.
Brantford.....	Washington.	Central City....	Anderson.	Conway Springs.	Sumner.
Brazilton.....	Crawford.	Centralia.....	Nemaha.	Cookville.....	Woodson.
Bremen.....	Marshall.	Centre.....	Chautauqua.	Coolidge.....	Hamilton.
Brenham.....	Kiowa.	Centre Ridge....	Woodson.	Cora.....	Smith.
Brenner.....	Doniphan.	Centreville....	Linn.	Corbin.....	Sumner.
Brewster.....	Thomas.	Centropolis....	Franklin.	Corinth.....	Osborne.
Bridgeport.....	Saline.	Cess.....	Morton.	Corning.....	Nemaha.
Briggs.....	Geary.	Chalk Mound....	Wabaunsee.	Coronado.....	Wichita.
Brigham.....	Greenwood.	Challacombe....	Ness.	Corwin.....	Harper.
Bristow.....	Osborne.	Chantilly.....	Kearny.	Costello.....	Montgomery.
Broderick.....	Pottawatomie.	Chanute.....	Neosho.	Cottonwood Falls, c. h.	Chase.
Bronson.....	Bourbon.	Chaplin.....	Elk.	Council Grove, c. h.	Morris.
Brooks.....	Wilson.	Chapman.....	Dickinson.	Coursen's Grove.	Mitchell.
Brookville....	Saline.	Chardon.....	Rawlins.	Courtland.....	Republic.
Broughton.....	Clay.	Charity.....	Clay.	Covert.....	Osborne.
Brownell.....	Ness.	Charlotte.....	Sherman.	Coyville.....	Wilson.
Brownsville....	Chautauqua.	Chase.....	Rice.	Crainville.....	Republic.
Bucklin.....	Ford.	Chautauqua....	Chautauqua.	Crandall.....	Coffey.
Bucyrus.....	Miami.	Chelsea.....	Butler.	Crane.....	Montgomery.
Buda.....	Ness.	Cheney.....	Sedgwick.	Crawford.....	Rice.
Buel.....	Mitchell.	Chepstow.....	Washington.	Crescent.....	Kiowa.
Buffalo.....	Wilson.	Cherokee.....	Crawford.	Crestline.....	Cherokee.
Buffalo Park....	Gove.	Cherry.....	Cherokee.	Creswell.....	Marion.
Buhler.....	Reno.	Cherry Vale....	Montgomery.	Crisfield.....	Harper.
Bunker Hill....	Russell.	Chester.....	Jefferson.	Critzer.....	Linn.
Burden.....	Cowley.	Chetopa.....	Labette.	Crotty.....	Coffey.
Burdett.....	Pawnee.	Cheyenne.....	Osborne.	Crow.....	Phillips.
Burdick.....	Morris.	Chico.....	Saline.	Crown Point....	Saline.
Burlingame....	Osage.	Chicopee.....	Crawford.	Crystal Springs.	Harper.
Burlington, c. h..	Coffey.	Chiles.....	Miami.	Cuba.....	Republic.
Burns.....	Marion.	Chouteau.....	Johnson.	Cullison.....	Pratt.
Burntwood.....	Rawlins.	Cicero.....	Sumner.	Culver.....	Ottawa.
Burr Oak.....	Jewell.	Cimarron.....	Gray.	Cummings.....	Atchison.
Burrton.....	Harvey.	Circleville....	Jackson.	Cunningham....	Kingman.
Burt.....	Woodson.	Clafin.....	Barton.	Curran.....	Harper.
Busby.....	Elk.	Clara.....	Washington.	Custer.....	Smith.
Bushong.....	Lyon.	Clarence.....	Stevens.	Dafer.....	Leavenworth.
Bushton.....	Rice.	Clarksburgh....	Bourbon.	Dalton.....	Sumner.
Buxton.....	Wilson.	Clay Centre, c. h.	Clay.	Dana.....	Phillips.
Byers.....	Meade.	Clayton.....	Norton.	Danby.....	Ness.
Byron.....	Woodson.	Clear Creek....	Nemaha.	Danville.....	Harper.
Cabbell.....	Logan.	Clear Dale.....	Sumner.	Day.....	Washington.
Cadmus.....	Linn.	Clearfield.....	Douglas.	Dean.....	Jefferson.
Cage.....	Butler.	Clear Water....	Sedgwick.	Dearing.....	Montgomery.
Cahola.....	Chase.	Cleburne.....	Riley.	Decatur.....	Decatur.
Cain.....	Eice.	Clements.....	Chase.	Deerfield.....	Kearny.
Cairo.....	Pratt.	Cleo.....	Brown.	Deerhead.....	Barber.
Caldwell.....	Sumner.	Cleveland.....	Kingman.	De Graff.....	Butler.
Calista.....	Kingman.	Clifton.....	Washington.	Delavan.....	Morris.
Calvert.....	Norton.	Climax.....	Greenwood.	Delhi.....	Osborne.
Cambridge.....	Cowley.	Clinton.....	Douglas.	Delight.....	Ellsworth.
Canada.....	Marion.	Cloverdale.....	Chautauqua.	Dellvale.....	Norton.
Canema.....	Barber.	Clugh.....	Cheyenne.	Delmore.....	McPherson.
Caney.....	Montgomery.	Clyde.....	Cloud.	Delphos.....	Ottawa.
Canton.....	McPherson.	Coalvale.....	Crawford.	Denison.....	Jackson.
Capioma.....	Nemaha.	Coats.....	Pratt.	Denmark.....	Lincoln.
Carbondale....	Osage.	Codell.....	Rooks.	Dennis.....	Labette.
Carlton.....	Dickinson.	Coffeyville....	Montgomery.	Densmore.....	Norton.
Carlyle.....	Allen.	Colbert.....	Lincoln.	Dentonville....	Jewell.
Carmel.....	Cloud.	Colby, c. h.....	Thomas.	Derby.....	Doniphan.
Carnelro.....	Ellsworth.	Coldwater, c. h..	Comanche.	Dermot.....	Sedgwick.
Carroll.....	Greenwood.	Colfax.....	Chautauqua.	Derry.....	Stevens.
Carson.....	Brown.	Collyer.....	Trego.	De Soto.....	Greenwood.
Carwood.....	Wichita.	Colokan.....	Greeley.	Detroit.....	Johnson.
Castleton.....	Reno.	Coloma.....	Woodson.	Devizes.....	Dickinson.
Catalpa.....	Gove.	Colony.....	Anderson.	Devon.....	Norton.
Catharine.....	Ellis.	Columbus, c. h..	Cherokee.	Dewey.....	Bourbon.
Cato.....	Crawford.	Colusa.....	Haskell.	De Witt.....	Washington.
Caven.....	Pratt.	Colwich.....	Sedgwick.	Dexter.....	Cowley.
Cave Springs....	Elk.	Comet.....	Brown.		

Reports of the Kansas State Board of Agriculture

292

KANSAS STATE BOARD OF AGRICULTURE.

POSTAL GUIDE FOR KANSAS—CONTINUED.

POST OFFICE.	COUNTY.	POST OFFICE.	COUNTY.	POST OFFICE.	COUNTY.
Dial.....	Osborne.	Enosdale.....	Washington.	Fullerton.....	Hodgeman.
Diamond Springs	Morris.	Ensign.....	Gray.	Fulton.....	Bourbon.
Dickeyville.....	Phillips.	Enterprise.....	Dickinson.	Funston.....	Allen.
Dighton.....	Lane.	Equity.....	Anderson.	Furley.....	Sedgwick.
Dildine.....	Wilson.	Erie, c. h.....	Neosho.	Galatia.....	Barton.
Dillon.....	Dickinson.	Esbon.....	Jewell.	Galena.....	Cherokee.
Dispatch.....	Smith.	Eskridge.....	Wabaunsee.	Galesburgh.....	Neosho.
Dodge City, c. h.....	Ford.	Essex.....	Garfield.	Galt.....	Rice.
Doniphan.....	Doniphan.	Esther.....	Shawnee.	Galva.....	McPherson.
Dorrance.....	Russell.	Eudora.....	Douglas.	Garden City, c. h.....	Finney.
Doster.....	Sumner.	Eureka, c. h.....	Greenwood.	Garden Plain.....	Sedgwick.
Douglass.....	Butler.	Evansville.....	Comanche.	Gardner.....	Johnson.
Dover.....	Shawnee.	Everest.....	Brown.	Garfield.....	Pawnee.
Downs.....	Osborne.	Ewell.....	Sumner.	Garland.....	Bourbon.
Dragoon.....	Osage.	Exeter.....	Clay.	Garlington.....	Franklin.
Dresden.....	Decatur.	Fact.....	Clay.	Garnett, c. h.....	Anderson.
Drury.....	Sumner.	Fairdale.....	Wyandotte.	Garrison.....	Pottawatomie.
Dubuque.....	Russell.	Fairfield.....	Wabaunsee.	Gaskill.....	Washington.
Duckworth.....	Comanche.	Fair Haven.....	Norton.	Gaylord.....	Smith.
Dun.....	Wilson.	Fairmount.....	Leavenworth.	Geary.....	Doniphan.
Dunavant.....	Jefferson.	Fairport.....	Russell.	Gem.....	Thomas.
Dundee.....	Barton.	Fairview.....	Brown.	Geneseo.....	Rice.
Duniap.....	Morris.	Fall Leaf.....	Leavenworth.	Geneva.....	Allen.
Duquoin.....	Harper.	Fall River.....	Greenwood.	Germania.....	Sedgwick.
Durachen.....	Butler.	Falun.....	Saline.	Germantown.....	Smith.
Durham.....	Marion.	Fame.....	Greenwood.	Geuda Springs.....	Cowley.
Dwight.....	Morris.	Fancy Creek.....	Clay.	Gibson.....	Trego.
Eagle.....	Barber.	Fanning.....	Doniphan.	Gideon.....	Douglas.
Earleton.....	Neosho.	Farisville.....	Ellsworth.	Giffillan.....	Bourbon.
East Norway.....	Doniphan.	Farlington.....	Crawford.	Girard, c. h.....	Crawford.
Easton.....	Leavenworth.	Farlinville.....	Linn.	Gladstone.....	Rawlins.
Eatonville.....	Cowley.	Farmersburgh.....	Chautauqua.	Gladys.....	Sedgwick.
Echo.....	Douglas.	Farmington.....	Atchison.	Glasco.....	Cloud.
Eden.....	Atchison.	Faulkner.....	Cherokee.	Glendale.....	Bourbon.
Edgerton.....	Johnson.	Fawn.....	Montgomery.	Glen Elder.....	Mitchell.
Edith.....	Logan.	Fay.....	Hamilton.	Glen Grouse.....	Cowley.
Edmond.....	Norton.	Federal.....	Edwards.	Glenloch.....	Anderson.
Edna.....	Labette.	Fenton.....	Rush.	Glenn.....	Johnson.
Edson.....	Sherman.	Felt.....	Edwards.	Glenwood.....	Leavenworth.
Edwardsville.....	Wyandotte.	Fiat.....	Elk.	Globe.....	Douglas.
Edwin.....	Stanton.	Fidelity.....	Nemaha.	Goddard.....	Sedgwick.
Efingham.....	Atchison.	Field.....	Morris.	Godfrey.....	Bourbon.
Ego.....	Gray.	Fieldmore.....	Lane.	Goff's.....	Nemaha.
Elba.....	Chase.	Findlay.....	Linn.	Gognac.....	Stanton.
Elbing.....	Butler.	Fingal.....	Rush.	Golden.....	Grant.
Elco.....	Lyon.	Finney.....	Woodson.	Goode.....	Phillips.
El Dorado, c. h.....	Butler.	Fisher.....	Stanton.	Good Intent.....	Atchison.
Eldred.....	Barber.	Flavius.....	Rush.	Goodland, c. h.....	Sherman.
Eleanor.....	Harvey.	Fleming.....	Crawford.	Goodrich.....	Linn.
Elgin.....	Chautauqua.	Fletcher.....	Stanton.	Goodwater.....	Gove.
Elk.....	Chase.	Flint Ridge.....	Greenwood.	Gordon.....	Butler.
Elkader.....	Logan.	Floral.....	Cowley.	Gorham.....	Russell.
Elk City.....	Montgomery.	Florence.....	Marion.	Goss.....	Harper.
Elk Falls.....	Elk.	Folsom.....	Haskell.	Gove.....	Gove.
Ellinwood.....	Barton.	Fontana.....	Miami.	Grace.....	Sherman.
Elliott.....	Sheridan.	Ford.....	Ford.	Grafton.....	Chautauqua.
Ellis.....	Ellis.	Forest Hill.....	Russell.	Grainfield.....	Gove.
Ellsworth, c. h.....	Ellsworth.	Formoso.....	Jewell.	Granada.....	Nemaha.
Elm City.....	Labette.	Forrester.....	Ness.	Grand Haven.....	Shawnee.
Elm Creek.....	Marshall.	Ft. Leavenworth.....	Leavenworth.	Grand Summit.....	Cowley.
Elmdale.....	Chase.	Fort Riley.....	Geary.	Grant.....	Riley.
Elmira.....	Mitchell.	Fort Scott, c. h.....	Bourbon.	Grantville.....	Jefferson.
Elm Mills.....	Barber.	Fostoria.....	Pottawatomie.	Graves.....	Cloud.
Elmo.....	Dickinson.	Fountain.....	Osage.	Great Bend, c. h.....	Barton.
Elmont.....	Shawnee.	Fowler.....	Meade.	Greeley.....	Anderson.
Elsmore.....	Allen.	Fox.....	Harper.	Green.....	Clay.
Elwood.....	Doniphan.	Francis.....	Ness.	Greenbush.....	Crawford.
Elyria.....	McPherson.	Frankfort.....	Marshall.	Green Elm.....	Crawford.
Emerson.....	Anderson.	Franklinville.....	Ness.	Greenleaf.....	Washington.
Emerald.....	Stafford.	Fred.....	Marion.	Green Ridge.....	Stafford.
Eminence.....	Garfield.	Frederic.....	Rice.	Greensburg, c. h.....	Kiowa.
Emmet.....	Wyandotte.	Fredonia, c. h.....	Wilson.	Greenwich.....	Sedgwick.
Emmons.....	Washington.	Freedom.....	Butler.	Gregory.....	Jewell.
Empire City.....	Cherokee.	Freeman.....	Stafford.	Grenola.....	Elk.
Emporia, c. h.....	Lyon.	Freeport.....	Harper.	Gridley.....	Coffey.
Enfield.....	Rooks.	Free Will.....	Osborne.	Griffin.....	Woodson.
Englevald.....	Crawford.	Friend.....	Scott.	Grigsby.....	Scott.
Englewood.....	Clark.	Friendship.....	Cherokee.	Grinnell.....	Gove.
Enon.....	Barber.	Frontenac.....	Crawford.	Grinter.....	Wyandotte.

Reports of the Kansas State Board of Agriculture

EIGHTH BIENNIAL REPORT—POSTAL GUIDE.

293

POSTAL GUIDE FOR KANSAS—CONTINUED.

POST OFFICE.	COUNTY.	POST OFFICE.	COUNTY.	POST OFFICE.	COUNTY.
Griswold.....	Sherman.	Hillsboro.....	Marion.	Jetmore.....	Hodgeman.
Groveland.....	McPherson.	Hillsdale.....	Miami.	Jewell.....	Jewell.
Grover.....	Douglas.	Hillside.....	Phillips.	Jingo.....	Miami.
Guelph.....	Sumner.	Hilltop.....	Greenwood.	Joash.....	Meade.
Gullford.....	Wilson.	Hink.....	Crawford.	Johnson.....	Stanton.
Guitard Station.	Marshall.	Hodgeman.....	Hodgeman.	Johnstown.....	McPherson.
Gurney.....	Cheyenne.	Hoge.....	Leavenworth.	Jonesburgh.....	Chautauqua.
Guy.....	Sheridan.	Holsington.....	Barton.	Judson.....	Smith.
Gypsum.....	Saline.	Holbrook.....	Hodgeman.	Julia.....	Kingman.
Haddam.....	Washington.	Holland.....	Dickinson.	Junction City, c. h. .	Geary.
Hadley.....	Crawford.	Hollenberg.....	Washington.	June.....	Woodson.
Halcyon.....	Wichita.	Holliday.....	Johnson.	Kackley.....	Republic.
Hale.....	Chautauqua.	Holling.....	Douglas.	Kalvesta.....	Garfield.
Halford.....	Thomas.	Hollis.....	Cloud.	Kanona.....	Decatur.
Halifax.....	Wabaunsee.	Holyrood.....	Ellsworth.	Kansada.....	Ness.
Half Way.....	Cloud.	Holton, c. h. .	Jackson.	Kansas City, c. h. .	Wyandotte.
Hallowell.....	Cherokee.	Holy Cross.....	Pottawatomie.	Kanopolis.....	Ellsworth.
Hall's Summit.....	Coffey.	Home.....	Marshall.	Kearny.....	Kearny.
Halstead.....	Harvey.	Homestead.....	Chase.	Keats.....	Riley.
Hamilton.....	Greenwood.	Homewood.....	Franklin.	Kebar.....	Graham.
Hamlin.....	Brown.	Hooker.....	Decatur.	Kechi.....	Sedgwick.
Hammond.....	Bourbon.	Hooser.....	Cowley.	Keelville.....	Cherokee.
Hampton.....	Rush.	Hope.....	Dickinson.	Keene.....	Wabaunsee.
Hanback.....	Norton.	Horace.....	Greeley.	Keighley.....	Butler.
Hanover.....	Washington.	Horton.....	Brown.	Kellogg.....	Cowley.
Happy.....	Graham.	Horton.....	Wyandotte.	Kelly.....	Nemaha.
Hardlee.....	Smith.	Hortonburgh.....	Lyon.	Kelso.....	Morris.
Harding.....	Bourbon.	Howard, c. h. .	Elk.	Kendall.....	Hamilton.
Hardtner.....	Barber.	Hoxie, c. h. .	Sheridan.	Kenilworth.....	Stafford.
Hargrave.....	Rush.	Hoyt.....	Jackson.	Kennebeck.....	Russell.
Harkness.....	Leavenworth.	Hudson.....	Stafford.	Kennedy.....	Dickinson.
Harlan.....	Smith.	Hugoton, c. h. .	Stevens.	Kennekuk.....	Atchison.
Harna.....	Gray.	Hukle.....	Sedgwick.	Kensington.....	Smith.
Harmony.....	Pawnee.	Hull.....	Marshall.	Kent.....	Reno.
Harold.....	Ness.	Humboldt.....	Allen.	Kepple.....	Wichita.
Harper.....	Harper.	Hund's Station.....	Leavenworth.	Keysville.....	Pawnee.
Harris.....	Anderson.	Hunnewell.....	Sumner.	Kickapoo City.....	Leavenworth.
Harrison.....	Jewell.	Huntsville.....	Reno.	Kidderville.....	Hodgeman.
Hartford.....	Lyon.	Huron.....	Atchison.	Kill Creek.....	Osborne.
Hartland.....	Kearny.	Huscher.....	Cloud.	Kilmer.....	Shawnee.
Harveyville.....	Wabaunsee.	Hutchinson, c. h. .	Reno.	Kimbal.....	Neosho.
Haskell.....	Anderson.	Hymers.....	Chase.	Kimeo.....	Washington.
Hatton.....	Hamilton.	Idana.....	Clay.	Kincaid.....	Anderson.
Havana.....	Montgomery.	Idell.....	Crawford.	Kingman, c. h. .	Kingman.
Haven.....	Reno.	Ideenbro.....	Labette.	Kingsdown.....	Ford.
Havensville.....	Pottawatomie.	Igo.....	Books.	Kingsville.....	Shawnee.
Haverhill.....	Butler.	Ilion.....	Rawlins.	Kinsley, c. h. .	Edwards.
Haviland.....	Butler.	Imes.....	Franklin.	Kiowa.....	Barber.
Hawkeye.....	Decatur.	Imperial.....	Garfield.	Kipp.....	Saline.
Hawley.....	Russell.	Independence, c. h. .	Montgomery.	Kirkfield.....	Edwards.
Haworth.....	Republic.	Indianola.....	Butler.	Kirwin.....	Phillips.
Hawthorne.....	Atchison.	Industry.....	Clay.	Klink.....	Sherman.
Hays City, c. h. .	Ellis.	Ingalls.....	Gray.	Knauston.....	Finney.
Haysville.....	Sedgwick.	Inman.....	McPherson.	Knox.....	Sumner.
Hazelton.....	Barber.	Invermay.....	Atchison.	Koloko.....	Washington.
Healey.....	Lane.	Inyo.....	Harper.	Konantz.....	Stanton.
Heber.....	Cloud.	Iola, c. h. .	Allen.	Kong.....	Coffey.
Hedgewood.....	Norton.	Ionia.....	Jewell.	Kuhnbrook.....	Marion.
Heizerton.....	Barton.	Iowa Point.....	Doniphan.	Kuka.....	Thomas.
Helmick.....	Morris.	Iowaville.....	Sedgwick.	Labette.....	Labette.
Henry.....	Sheridan.	Irving.....	Marshall.	La Blanche.....	Sherman.
Hepier.....	Crawford.	Isabel.....	Barber.	Laclede.....	Pottawatomie.
Herington.....	Dickinson.	Island.....	Neosho.	La Crosse, c. h. .	Rush.
Herkimer.....	Marshall.	Iuka, c. h. .	Pratt.	La Cygne.....	Linn.
Herman.....	Lincoln.	Ivanhoe.....	Haskell.	Ladore.....	Neosho.
Herdon.....	Rawlins.	Ivanpah.....	Greenwood.	Lafayette.....	Stevens.
Hertha.....	Neosho.	Ivy.....	Lyon.	La Fontaine.....	Wilson.
Hesper.....	Douglas.	Iwacura.....	Clay.	La Grange.....	Marshall.
Hesston.....	Harvey.	Jacksonburgh.....	Smith.	La Harpe.....	Allen.
Hewins.....	Chautauqua.	Jaggar.....	Leavenworth.	Lake City.....	Barber.
Hiattville.....	Bourbon.	Jauma.....	Meade.	Lakeland.....	Meade.
Hiawatha, c. h. .	Brown.	Jamestown.....	Cloud.	Lakeside.....	Bourbon.
Hickman.....	Greenwood.	Jaqva.....	Cheyenne.	Lakin.....	Kearny.
High Bridge.....	Atchison.	Jarballo.....	Leavenworth.	Lamar.....	Ottawa.
Highhill.....	Osborne.	Jasper.....	Meade.	Lamborn.....	Sherman.
Highland.....	Doniphan.	Jefferson.....	Montgomery.	Lamont.....	Greenwood.
Highland Station.	Doniphan.	Jenkins.....	Comanche.	Lancaster.....	Atchison.
Highpoint.....	Ness.	Jennings.....	Decatur.	Lane.....	Franklin.
Hill City.....	Graham.	Jerome.....	Gove.	Laneville.....	Labette.

Reports of the Kansas State Board of Agriculture

294

KANSAS STATE BOARD OF AGRICULTURE.

POSTAL GUIDE FOR KANSAS—CONTINUED.

POST OFFICE.	COUNTY.	POST OFFICE.	COUNTY.	POST OFFICE.	COUNTY.
Langdon.....	Reno.	Lucerne.....	Sheridan.	Midway.....	Crawford.
Langley.....	Ellsworth.	Luctor.....	Phillips.	Milan.....	Sumner.
Lansing.....	Leavenworth.	Ludell.....	Rawlins.	Millford.....	Geary.
Lapeer.....	Douglas.	Lund.....	Decatur.	Millard.....	Barton.
Laplant.....	Greenwood.	Luray.....	Russell.	Miller.....	Lyon.
Larimer.....	Montgomery.	Lydia.....	Kearny.	Millerton.....	Sumner.
Larkin.....	Jackson.	Lyle.....	Decatur.	Millwood.....	Leavenworth.
Larned, c. h.....	Pawnee.	Lyndon, c. h.....	Osage.	Millroy.....	Lincoln.
Lashmet.....	Kingman.	Lyons, c. h.....	Rice.	Milton.....	Hodgeman.
Lasta.....	Riley.	McAllaster.....	Logan.	Miltonvale.....	Sumner.
Latham.....	Butler.	McCracken.....	Rush.	Mina.....	Cloud.
Latimer.....	Morris.	McCune.....	Crawford.	Mineral Point.....	Marshall.
Laton.....	Rooks.	McDonald.....	Rawlins.	Minersville.....	Anderson.
Laurel.....	Hodgeman.	McFarland.....	Wabaunsee.	Mingona.....	Cloud.
Lava.....	Sherman.	McLain.....	Harvey.	Minneapolis, c. h.....	Barber.
Lawndale.....	Pratt.	McLouth.....	Jefferson.	Ottawa.....	Sedgwick.
Lawnridge.....	Cheyenne.	McPherson, c. h.....	McPherson.	Minneola.....	Clark.
Lawrence, c. h.....	Douglas.	Macgaw.....	Sheridan.	Mirage.....	Rawlins.
Lawrenceburgh.....	Cloud.	Macksville.....	Stafford.	Mitchell.....	Rice.
Lawson.....	Grant.	Macon.....	Wallace.	Moline.....	Elk.
Lay.....	Montgomery.	Macyville.....	Cloud.	Mona.....	Reno.
Leanna.....	Allen.	Madison.....	Greenwood.	Modoc.....	Scott.
Leavenworth, c. h.....	Leavenworth.	Magda.....	Lyon.	Monett.....	Chautauqua.
Lebanon.....	Smith.	Mahaska.....	Washington.	Monitor.....	McPherson.
Lebo.....	Coffey.	Maherville.....	Barton.	Monmouth.....	Crawford.
Lecompton.....	Douglas.	Maize.....	Sedgwick.	Monon.....	Stanton.
Leeds.....	Chautauqua.	Majella.....	Bourbon.	Monrovia.....	Atchison.
Leesburg.....	Stafford.	Manchester.....	Dickinson.	Montana.....	Labette.
Lehigh.....	Marion.	Manhattan, c. h.....	Riley.	Monterey.....	Riley.
Leland.....	Graham.	Mankato, c. h.....	Jewell.	Montezuma.....	Gray.
Le Loup.....	Franklin.	Manning.....	Scott.	Monticello.....	Johnson.
Lenape.....	Leavenworth.	Manteno.....	Ness.	Mont Ida.....	Anderson.
Lenexa.....	Johnson.	Maple City.....	Cowley.	Montrose.....	Jewell.
Lenora.....	Norton.	Maple Hill.....	Wabaunsee.	Monument.....	Logan.
Leon.....	Butler.	Marena.....	Bourbon.	Moodyville.....	Pottawatomie.
Leona.....	Doniphan.	Margaret.....	Hodgeman.	Morantown.....	Allen.
Leonardville.....	Riley.	Mariadahl.....	Lincoln.	Morehead.....	Neosho.
Leoti.....	Wichita.	Marietta.....	Pottawatomie.	Morgan.....	Chase.
Lerado.....	Reno.	Marion, c. h.....	Marshall.	Morganville.....	Clay.
Le Roy.....	Coffey.	Marmaton.....	Marion.	Morland.....	Graham.
Letitia.....	Clark.	Marquette.....	Bourbon.	Morrill.....	Brown.
Levant.....	Thomas.	Marmaton.....	McPherson.	Morrow Station.....	Washington.
Lewis.....	Edwards.	Marshall.....	Pawnee.	Morse.....	Johnson.
Lexington.....	Clark.	Martin.....	Phillips.	Mortimer.....	Labette.
Liberal.....	Seward.	Marvin.....	Marshall.	Morton.....	Morton.
Liberty.....	Montgomery.	Marysville, c. h.....	Ellsworth.	Moscow.....	Stevens.
Liebethal.....	Rush.	Masmer.....	Chase.	Moss Springs.....	Geary.
Lincoln, c. h.....	Lincoln.	Matfield Green.....	Labette.	Mound City, c. h.....	Linn.
Lincolnton.....	Marion.	Mathewson.....	Phillips.	Mound Creek.....	Miami.
Linda.....	Rawlins.	Matteson.....	Osage.	Moundridge.....	McPherson.
Lindsborg.....	McPherson.	Maxson.....	Riley.	Mound Valley.....	Labette.
Lindsey.....	Ottawa.	May Day.....	Sumner.	Mount Ayr.....	Osborne.
Linn.....	Washington.	Mayfield.....	Comanche.	Mount Carmel.....	Crawford.
Linndale.....	Rush.	Mayo.....	Jackson.	Mount Hope.....	Sedgwick.
Linwood.....	Leavenworth.	Mayetta.....	Jewell.	Mount Olivet.....	Leavenworth.
Lister.....	Wallace.	Mayview.....	Wyandotte.	Mount Pleasant.....	Atchison.
Litchfield.....	Crawford.	Maywood.....	Meade.	Mulberry.....	Crawford.
Little River.....	Rice.	Meade, c. h.....	Johnson.	Muldrow.....	Sherman.
Liverpool.....	Stanton.	Meadow Brook.....	Douglas.	Mullinville.....	Kiowa.
Lockport.....	Haskell.	Media.....	Barber.	Mulvane.....	Sumner.
Lodi.....	Barber.	Medicine Lodge, c. h.....	Jefferson.	Mumford.....	Barber.
Logan.....	Phillips.	Medina.....	Reno.	Muncie.....	Wyandotte.
Lone Elm.....	Anderson.	Medora.....	Wallace.	Munden.....	Republic.
Lone Walnut.....	Lincoln.	Mell.....	Cherokee.	Munjoy.....	Ellis.
Longford.....	Clay.	Melrose.....	Osage.	Murdock.....	Butler.
Long Island.....	Phillips.	Melvorn.....	Wyandotte.	Muscotah.....	Atchison.
Longton.....	Elk.	Menager.....	Ellis.	Museum.....	Sheridan.
Lorena.....	Butler.	Mendota.....	Thomas.	Myers Valley.....	Pottawatomie.
Loring.....	Wyandotte.	Menlo.....	Shawnee.	Myra.....	Woodson.
Lorraine.....	Ellsworth.	Menoken.....	Saline.	Myrtle.....	Phillips.
Lost Springs.....	Marion.	Mentor.....	Cloud.	Nadeau.....	Jackson.
Louisburgh.....	Miami.	Meredith.....	Jefferson.	Nance.....	Phillips.
Louisville.....	Pottawatomie.	Meriden.....	Johnson.	Narka.....	Republic.
Lowell Station.....	Jewell.	Merrill.....	Meade.	Naron.....	Pratt.
Lowe.....	Chautauqua.	Mertilla.....	Cherokee.	Nashville.....	Kingman.
Lowell.....	Leavenworth.	Messer.....	Linn.	Nat'l Military Home.....	Leavenworth.
Lowmont.....	Garfield.	Michigan Valley.....	Osage.	Natoma.....	Osborne.
Loyal.....	Russell.	Middletown.....	Wilson.	Navarre.....	Dickinson.
Lucas.....					

Reports of the Kansas State Board of Agriculture

EIGHTH BIENNIAL REPORT—POSTAL GUIDE.

295

POSTAL GUIDE FOR KANSAS—CONTINUED.

POST OFFICE.	COUNTY.	POST OFFICE.	COUNTY.	POST OFFICE.	COUNTY.
Neal.....	Greenwood.	Oneida.....	Nemaha.	Pierceville.....	Finney.
Neely.....	Leavenworth.	Oneonta.....	Cloud.	Pine Grove.....	Butler.
Nekoma.....	Rush.	Ontario.....	Jackson.	Pioneer.....	Rush.
Neodesha.....	Wilson.	Opolis.....	Crawford.	Pipe Creek.....	Ottawa.
Neola.....	Stafford.	Orbitello.....	Lincoln.	Piper.....	Wyandotte.
Neosho Falls.....	Woodson.	Orchard.....	Linn.	Piqua.....	Woodson.
Neosho Rapids.....	Lyon.	Orie.....	Sumner.	Pitt.....	Finney.
Nescatunga.....	Comanche.	Oronoque.....	Norton.	Pittsburgh.....	Crawford.
Ness City, c. h.....	Ness.	Orworth.....	Lincoln.	Pixley.....	Barber.
Netawaka.....	Jackson.	Osage City.....	Osage.	Plainville.....	Rooks.
Neuchatel.....	Nemaha.	Osage Mission.....	Neosho.	Pleasant Dale.....	Rush.
Neutral.....	Cherokee.	Osawatimie.....	Miami.	Pleasant Green.....	Phillips.
Neville.....	Sherman.	Osborne, c. h.....	Osborne.	Pleasant Grove.....	Douglas.
New Albany.....	Wilson.	Oskaloosa, c. h.....	Jefferson.	Pleasanton.....	Linn.
New Almelo.....	Norton.	Ost.....	Reno.	Pleasant Plain.....	Osborne.
Newark.....	Wilson.	Oswego, c. h.....	Labette.	Pleasant Ridge.....	Leavenworth.
New Basel.....	Dickinson.	Otego.....	Jewell.	Pleasant Valley.....	Lincoln.
New Cambria.....	Salline.	Otis.....	Rush.	Pleasant View.....	Cherokee.
New Chillicothe.....	Dickinson.	Ottawa, c. h.....	Franklin.	Plevna.....	Reno.
Newhope.....	Smith.	Otterbourne.....	Thomas.	Plumb.....	Lyon.
Newington.....	Johnson.	Otto.....	Cowley.	Plymouth.....	Finney.
New Lancaster.....	Miami.	Ottumwa.....	Coffey.	Plymouth.....	Lyon.
Newman.....	Jefferson.	Overbrook.....	Osage.	Poe.....	Ottawa.
New Murdock.....	Kingman.	Oxford.....	Sumner.	Point View.....	Pawnee.
New Salem.....	Cowley.	Ozawkie.....	Jefferson.	Pollard.....	Rice.
Newton, c. h.....	Harvey.	Padonia.....	Brown.	Pomeroy.....	Wyandotte.
Niagara.....	Stevens.	Page.....	Logan.	Pomona.....	Franklin.
Nickel.....	Kiowa.	Painter.....	Scott.	Pontiac.....	Butler.
Nickerson.....	Reno.	Palacky.....	Ellsworth.	Pope.....	Leavenworth.
Nicodemus.....	Graham.	Palatine.....	Ellis.	Porterville.....	Bourbon.
Niles.....	Ottawa.	Palco.....	Rooks.	Portis.....	Osborne.
Niotaze.....	Chautauqua.	Palermo.....	Doniphan.	Portland.....	Sumner.
Noble.....	Rice.	Palmer.....	Washington.	Pottawatomie.....	Coffey.
Noland.....	Ford.	Palmyra.....	Butler.	Potter.....	Atchison.
Nonchalanta.....	Ness.	Paola, c. h.....	Miami.	Pottersburgh.....	Lincoln.
Nora.....	Pratt.	Paradise.....	Russell.	Pottsville.....	Osborne.
Norcatut.....	Decatur.	Parallel.....	Washington.	Potwin.....	Butler.
Norfolk.....	Ellis.	Pardee.....	Atchison.	Powell.....	Phillips.
North Branch.....	Jewell.	Paris.....	Lincoln.	Powhattan.....	Brown.
North Cedar.....	Jefferson.	Parker.....	Linn.	Prairie Centre.....	Johnson.
Northcott.....	Anderson.	Parkerville.....	Morris.	Prairie View.....	Phillips.
Northfield.....	Sherman.	Parnell.....	Atchison.	Pratt.....	Pratt.
North Topeka.....	Shawnee.	Parsons.....	Labette.	Prattburgh.....	Stafford.
North Wichita.....	Sedgwick.	Partridge.....	Reno.	Prescott.....	Linn.
Norton, c. h.....	Norton.	Passaic.....	Kearny.	Presley.....	Sherman.
Nortonville.....	Jefferson.	Patmos.....	Coffey.	Preston.....	Pratt.
Norway.....	Republic.	Patterson.....	Harvey.	Pretty Prairie.....	Reno.
Norwich.....	Kingman.	Pauline.....	Shawnee.	Princeton.....	Franklin.
Norwood.....	Franklin.	Pavillon.....	Wabaunsee.	Proof.....	Wichita.
Numa.....	Butler.	Pawnee Rock.....	Barton.	Protection.....	Comanche.
Oak.....	Jefferson.	Pawnee Station.....	Bourbon.	Providence.....	Butler.
Oak Hill.....	Clay.	Pawnee Valley.....	Hodgeman.	Purcell.....	Doniphan.
Oakland.....	Shawnee.	Paxico.....	Wabaunsee.	Purity.....	Reno.
Oakley.....	Logan.	Peabody.....	Mhrion.	Putnam.....	Harvey.
Oak Mills.....	Atchison.	Peace Creek.....	Reno.	Pyramid.....	Gove.
Oak Valley.....	Elk.	Pearl.....	Dickinson.	Quarry.....	Marion.
Oakwood.....	Linn.	Peck.....	Sedgwick.	Quenemo.....	Osage.
Oanica.....	Kearny.	Pelton.....	Stafford.	Quickville.....	Thomas.
Oasis.....	Smith.	Penalosa.....	Kingman.	Quincy.....	Greenwood.
Oatville.....	Sedgwick.	Pence.....	Scott.	Quindaro.....	Wyandotte.
Oberlin, c. h.....	Decatur.	Pen Dennis.....	Lane.	Quinter.....	Gove.
Ocheltree.....	Johnson.	Pendleton.....	Miami.	Quinton Heights.....	Shawnee.
Odee.....	Meade.	Penokee.....	Graham.	Quivera.....	Wyandotte.
Odense.....	Neosho.	Penquite.....	Ottawa.	Radical.....	Montgomery.
Odin.....	Barton.	Pentheka.....	Rawlins.	Rago.....	Kingman.
Offerle.....	Edwards.	Peoria.....	Franklin.	Ramona.....	Marion.
Ogallah.....	Trego.	Peotone.....	Sedgwick.	Randall.....	Jewell.
Ogden.....	Riley.	Perkins.....	Montgomery.	Randolph.....	Riley.
Ohio.....	Smith.	Perry.....	Jefferson.	Ransom.....	Ness.
Okaw.....	Kingman.	Perth.....	Sumner.	Ransomville.....	Franklin.
Oketo.....	Marshall.	Peru.....	Chautauqua.	Rantoul.....	Franklin.
Olath, c. h.....	Johnson.	Peters.....	Kingman.	Rapture.....	Jewell.
Olcott.....	Reno.	Peterston.....	Osage.	Ravanna.....	Garfield.
Oliver.....	Haskell.	Pfeifer.....	Ellis.	Ray.....	Pawnee.
Olivet.....	Osage.	Phelps.....	Sheridan.	Rayville.....	Norton.
Olmitz.....	Barton.	Phila.....	Johnson.	Raymond.....	Rice.
Olpe.....	Lyon.	Phillipsburgh, c. h.....	Phillips.	Reading.....	Lyon.
Olsburg.....	Pottawatomie.	Piedmont.....	Greenwood.	Reamsville.....	Smith.
Onaga.....	Pottawatomie.	Pierce Junction.....	Brown.	Red Bud.....	Cowley.



Reports of the Kansas State Board of Agriculture

296

KANSAS STATE BOARD OF AGRICULTURE.

POSTAL GUIDE FOR KANSAS—CONTINUED.

POST OFFICE.	COUNTY.	POST OFFICE.	COUNTY.	POST OFFICE.	COUNTY.
Redfield.....	Bourbon.	Sawyer.....	Pratt.	Springvale.....	Pratt.
Redwing.....	Barton.	Saxman.....	Rice.	Spring Valley....	McPherson.
Reece.....	Greenwood.	Scammon.....	Cherokee.	Stafford.....	Stafford.
Reeder.....	Kiowa.	Scandia.....	Republic.	Stanley.....	Johnson.
Reedsville....	Marshall.	Schroyer.....	Marshall.	Stanton.....	Miami.
Reno.....	Leavenworth.	Scio.....	Rawlins.	Staples.....	Kiowa.
Republic.....	Republic.	Scipio.....	Anderson.	Star.....	Greenwood.
Reserve.....	Brown.	Scott, c. h.....	Scott.	Stark.....	Neosho.
Rest.....	Wilson.	Scottsville....	Mitchell.	Star Valley.....	Cherokee.
Rexford.....	Thomas.	Scranton.....	Osage.	State Center....	Barton.
Rhoades.....	Dickinson.	Seabrook.....	Shawnee.	Sterling.....	Rice.
Rice.....	Cloud.	Seaman.....	Linn.	Steuben.....	Jewell.
Richfield....	Morton.	Section.....	Coffey.	Stilwell.....	Johnson.
Richland.....	Shawnee.	Sedan, c. h.....	Chautauqua.	Stippville.....	Cherokee.
Richmond.....	Franklin.	Sedgwick.....	Harvey.	Stitt.....	Dickinson.
Richter.....	Franklin.	Sedowa.....	Sedgwick.	Stockdale.....	Riley.
Ridgeview....	Osage.	Seely.....	Cowley.	Stockholm.....	Wallace.
Riley.....	Riley.	Sego.....	Reno.	Stockrange.....	Ellis.
Ripon.....	Labette.	Seguin.....	Sheridan.	Stockton, c. h....	Rooks.
Riverdale....	Sumner.	Selden.....	Sheridan.	Stotler.....	Lyon.
Riverside.....	Ness.	Selkirk.....	Wichita.	Stover.....	Labette.
Roanoke.....	Stanton.	Selma.....	Anderson.	Stowell.....	Hamilton.
Robinson.....	Brown.	Seneca, c. h....	Nemaha.	Straight Creek..	Jackson.
Rochester....	Kingman.	Severance....	Doniphan.	Stranger.....	Leavenworth.
Rock.....	Cowley.	Severy.....	Greenwood.	Strawberry.....	Washington.
Rock Creek...	Jefferson.	Seward.....	Stafford.	Strawn.....	Coffey.
Rockford.....	Bourbon.	Sexton.....	Barber.	Strong.....	Chase.
Rockport.....	Rooks.	Shady Bend....	Lincoln.	Stuart.....	Smith.
Rockville....	Miami.	Shaffer.....	Rush.	Stuttgart.....	Phillips.
Rockwell City	Norton.	Shannon.....	Atchison.	Stuyvesant.....	Osborne.
Rogers.....	Chautauqua.	Sharon.....	Barber.	Success.....	Russell.
Rollin.....	Neosho.	Sharpe.....	Coffey.	Sugar.....	Miami.
Rome.....	Sumner.	Sharon Springs, c. h.	Wallace.	Sugar Loaf.....	Rocks.
Rosalia.....	Butler.	Sharp's Creek..	McPherson.	Sugar Valley....	Anderson.
Roscoe.....	Graham.	Shaw.....	Neosho.	Sulphur Springs.	Cloud.
Rose.....	Woodson.	Shawnee.....	Johnson.	Summerfield....	Marshall.
Rosedale.....	Wyandotte.	Sherdahl.....	Republic.	Sunnerville.....	Ottawa.
Rose Hill....	Osage.	Sherman City..	Cherokee.	Sunny Dale.....	Barber.
Rosemont.....	Lincoln.	Shermanville..	Sherman.	Sunnyside.....	Sedgwick.
Rosette.....	Shawnee.	Sherwin Junction.	Smith.	Sutphen's Mill..	Dickinson.
Rossville....	Rawlins.	Shibboleth....	Cherokee.	Sutton.....	Lane.
Rotate.....	Osborne.	Shields.....	Decatur.	Swede Creek....	Marshall.
Round Mound.	Barber.	Shiloh.....	Lane.	Sycamore Springs.	Butler.
Boxbury.....	McPherson.	Shipton.....	Hamilton.	Sylvan Grove...	Lincoln.
Rubens.....	Jewell.	Shockey.....	Saline.	Sylvia.....	Reno.
Ruble.....	Leavenworth.	Shorey.....	Shawnee.	Syracuse, c. h....	Hamilton.
Ruby.....	Sedgwick.	Sibley.....	Douglas.	Taloga.....	Morton.
Ruella.....	Harper.	Sidell.....	Wilson.	Talmage.....	Dickinson.
Ruleton.....	Sherman.	Silverdale....	Cowley.	Talmo.....	Republic.
Runnymede....	Harper.	Silver Lake....	Shawnee.	Tampa.....	Marion.
Rush Centre..	Rush.	Simpson.....	Mitchell.	Tannehill.....	Cowley.
Russell, c. h..	Russell.	Skeldon.....	Sheridan.	Tansel.....	Washington.
Russell Springs	Logan.	Skiddy.....	Morris.	Taw.....	Haskell.
Rutland.....	Montgomery.	Slate.....	Rooks.	Tecumseh.....	Shawnee.
Ruweda.....	Greenwood.	Smith Centre, c. h.	Smith.	Tehama.....	Cherokee.
Ryan.....	Rush.	Smoky Hill....	McPherson.	Templin.....	Wabaunsee.
Sabetha.....	Nemaha.	Smolan.....	Saline.	Terra Cotta....	Ellsworth.
Saffordville..	Chase.	Snokomo.....	Wabaunsee.	Terryton.....	Finney.
Saint Benedict	Nemaha.	Snyder.....	Ford.	Tescot.....	Ottawa.
Saint Bridget..	Marshall.	Soldier.....	Jackson.	Tevis.....	Shawnee.
Saint Clere....	Pottawatomie.	Solomon City..	Dickinson.	Thayer.....	Neosho.
Saint Francis..	Cheyenne.	Solomon Rapids.	Mitchell.	Thompsonville.	Jefferson.
Saint George..	Pottawatomie.	Somerset.....	Miami.	Thornton.....	Rawlins.
Saint John.....	Stafford.	South Cedar...	Jackson.	Thrall.....	Greenwood.
Saint Joseph..	Cloud.	South Haven...	Sumner.	Throop.....	Washington.
Saint Mark.....	Sedgwick.	South Hutchinson.	Reno.	Thurford.....	Thomas.
Saint Mary's..	Pottawatomie.	South Mound...	Neosho.	Thurman.....	Chase.
Saint Theresa..	Wichita.	South Park.....	Johnson.	Tiffany.....	Gove.
Salem.....	Jewell.	Southwell.....	Ness.	Timken.....	Rush.
Salemsburgh..	Saline.	Sparta.....	McPherson.	Tipton.....	Mitchell.
Salina, c. h....	Saline.	Spearsville....	Ford.	Tisdale.....	Cowley.
Saltville.....	Mitchell.	Spivey.....	Kingman.	Toledo.....	Chase.
Sandago.....	Stafford.	Spring Creek...	Chautauqua.	Tonganoxie....	Leavenworth.
Santa Fé.....	Haskell.	Springdale.....	Leavenworth.	Tonovay.....	Greenwood.
Saratoga.....	Pratt.	Springfield....	Seward.	Topeka, c. h....	Shawnee.
Sarcozie.....	Jefferson.	Spring Hill....	Johnson.	Station.....	
Saunders.....	Rush.	Spring Lake....	Meade.	N. Topeka, 330 Eas. ave.	
Savonburgh..	Allen.	Springside....	Pottawatomie.	Topland.....	Sherman.

Reports of the Kansas State Board of Agriculture

EIGHTH BIENNIAL REPORT—POSTAL GUIDE.

297

POSTAL GUIDE FOR KANSAS—CONCLUDED.

POST OFFICE.	COUNTY.	POST OFFICE.	COUNTY.	POST OFFICE.	COUNTY.
Toronto.....	Woodson.	Wabaunsee.....	Wabaunsee.	Wherry.....	Rice.
Torrance.....	Cowley.	Waco.....	Sedgwick.	Whittaker.....	Miami.
Towanda.....	Butler.	Wade.....	Miami.	White Church...	Wyandotte.
Tower Spring...	Lincoln.	Wagstaff.....	Miami.	White City.....	Morris.
Townsend.....	Cowley.	Wakarusa.....	Shawnee.	White Cloud.....	Doniphan.
Trading Post...	Linn.	Wa Keeney, c. h.	Trego.	White Rock.....	Republic.
Traer.....	Decatur.	Wakefield.....	Clay.	White Water.....	Butler.
Tregola.....	Trego.	Waldeck.....	Marion.	Whitfield.....	Shawnee.
Trenton.....	Saline.	Waldo.....	Russell.	Whiting.....	Jackson.
Tribune, c. h.	Greeley.	Walker.....	Ellis.	Whitman.....	Sumner.
Trivoli.....	Ellsworth.	Walkerfown.....	Bourbon.	Wichita, c. h.	Sedgwick.
Troublesome.....	Smith.	Wallace.....	Wallace.	Wichita Heights..	Sedgwick.
Troy, c. h.	Doniphan.	Wall Street.....	Linn.	Widerange.....	Ottawa.
Tully.....	Rawlins.	Wallula.....	Wyandotte.	Wilburn.....	Ford.
Turkville.....	Ellis.	Walnut.....	Crawford.	Wilder.....	Johnson.
Turner.....	Wyandotte.	Walnut Grove...	Mitchell.	Wilkinson.....	Wichita.
Turon.....	Reno.	Walsburg.....	Riley.	Willard.....	Shawnee.
Twelve Mile.....	Smith.	Walton.....	Harvey.	Wilcox.....	Trego.
Twin Creek.....	Osborne.	Wamego.....	Pottawatomie.	Williamsburgh...	Franklin.
Twin Falls.....	Greenwood.	Wanamaker.....	Shawnee.	Williamstown...	Jefferson.
Twin Mound.....	Douglas.	Ward.....	Wilson.	Willis.....	Brown.
Tyner.....	Smith.	Waring.....	Ness.	Willow Springs..	Douglas.
Udall.....	Cowley.	Warren.....	Sherman.	Wilmington.....	Wabaunsee.
Ulysses.....	Grant.	Warrendale.....	Grant.	Wilmore.....	Comanche.
Underwood.....	Greeley.	Warwick.....	Republic.	Wilmot.....	Cowley.
Union.....	Osage.	Washington, c. h.	Washington.	Wilsey.....	Morris.
Uniontown.....	Bourbon.	Waterford.....	Stevens.	Wilsonton.....	Labette.
Upola.....	Elk.	Waterloo.....	Kingman.	Wilson.....	Ellsworth.
Urbana.....	Neosho.	Waterville.....	Marshall.	Winchester.....	Jefferson.
Utica.....	Ness.	Wathena.....	Doniphan.	Windom.....	McPherson.
Utopia.....	Greenwood.	Watson.....	Shawnee.	Winfield, c. h.	Cowley.
Valeda.....	Labette.	Wauneta.....	Chautauqua.	Winkler's Mills..	Riley.
Valencia.....	Shawnee.	Waushara.....	Lyon.	Winneshelk.....	McPherson.
Valentine.....	Harvey.	Waveland.....	Shawnee.	Winona.....	Logan.
Valley Centre...	Sedgwick.	Waverly.....	Coffey.	Wise.....	Allen.
Valley Falls.....	Jefferson.	Wayne.....	Republic.	Wittrup.....	Hodgeman.
Vance.....	Wyandotte.	Wayside.....	Montgomery.	Womer.....	Smith.
Varck.....	Cherokee.	Wea.....	Miami.	Wonderly.....	Saline.
Vassar.....	Osage.	Weaver.....	Douglas.	Wonsevu.....	Chase.
Vaughn.....	Rawlins.	Webber.....	Jewell.	Woodbine.....	Dickinson.
Vega.....	Wallace.	Webster.....	Rooks.	Woodland.....	Bourbon.
Venango.....	Ellsworth.	Weir.....	Cherokee.	Woodlawn.....	Nemaha.
Vera.....	Wabaunsee.	Welcome.....	Geary.	Woodruff.....	Phillips.
Verbeck.....	Barton.	Welda.....	Anderson.	Woodsdale.....	Stevens.
Verdi.....	Ottawa.	Wellington, c. h.	Sumner.	Woodston.....	Rooks.
Verdigris.....	Lyon.	Wellmanville...	Ness.	Worden.....	Douglas.
Vermillion.....	Marshall.	Wellsford.....	Kiowa.	Wortley.....	Woodson.
Vernon.....	Woodson.	Wellsville.....	Franklin.	Wreford.....	Geary.
Vesper.....	Lincoln.	Weltbote.....	Washington.	Wright.....	Ford.
Victor.....	Mitchell.	Wendell.....	Edwards.	Wyckoff.....	Lyon.
Victoria.....	Ellis.	Weskan.....	Wallace.	Wyoming.....	Marshall.
Vidette.....	Shawnee.	Wesley.....	Dickinson.	Xenia.....	Bourbon.
Vilas.....	Wilson.	Western Park...	Elk.	Yale.....	Crawford.
Vincent.....	Osborne.	Westgate.....	Geary.	Yates Center, c. h.	Woodson.
Vine Creek.....	Ottawa.	Westmoreland, c. h.	Pottawatomie.	Yoder.....	Reno.
Vining.....	Clay.	Westola.....	Morton.	Youngtown.....	Marion.
Vinland.....	Douglas.	Weston.....	Geary.	Yoxall.....	Osborne.
Violenta.....	Cowley.	Westphalia.....	Anderson.	Zarah.....	Johnson.
Violenta.....	Sheridan.	West Plains.....	Meade.	Zeandale.....	Riley.
Virgil.....	Greenwood.	West Point.....	Rush.	Zella.....	Stevens.
Viroqua.....	Morton.	Wetmore.....	Nemaha.	Zionville.....	Grant.
Vliets.....	Marshall.	Wheatland.....	McPherson.	Zurich.....	Rooks.
Volland.....	Wabaunsee.	Wheaton.....	Pottawatomie.	Zyba.....	Sumner.
Wabash.....	Gray.	Wheeler.....	Cheyenne.		

Reports of the Kansas State Board of Agriculture

298

KANSAS STATE BOARD OF AGRICULTURE.

ROSTER FOR 1893.

SENATORS AND REPRESENTATIVES IN CONGRESS.

SENATORS.

Name.	Post office.
William A. Pepper.....	Topeka.
John Martin.....	Topeka.

REPRESENTATIVES.

District.	Name.	Post office.
First.....	Case Broderick.....	Holton.
Second.....	E. H. Funston.....	Carlyle.
Third.....	T. J. Hudson.....	Fredonia.
Fourth.....	Charles Curtis.....	Topeka.
Fifth.....	John Davis.....	Junction City.
Sixth.....	William Baker.....	Lincoln.
Seventh.....	Jerry Simpson.....	Medicine Lodge.
At large.....	W. A. Harris.....	Linwood.

EXECUTIVE DEPARTMENT, STATE OF KANSAS.

Office.	Name.	Post office.
Governor.....	L. D. Lewelling.....	Wichita.
Lieutenant Governor.....	Percy Daniels.....	Girard.
Secretary of State.....	R. S. Osborn.....	Stockton.
Auditor of State.....	Van B. Prather.....	Columbus.
Treasurer of State.....	W. H. Biddle.....	Augusta.
Superintendent Public Instruction.....	H. N. Gaines.....	Salina.
Attorney General.....	J. T. Little.....	Olathe.
Secretary State Board of Agriculture.....	M. Mohler.....	Osborne.
Superintendent of Insurance.....	W. H. McBride.....	Osborne.
State Librarian.....	H. J. Dennis.....	Leavenworth.
Secretary State Historical Society.....	F. G. Adams.....	Topeka.
Governor's Private Secretary.....	Fred. J. Close.....	Troy.
Assistant Secretary of State.....	D. C. Zercher.....	Olathe.
Adjutant General.....	H. H. Artz.....	Garden City.
State Printer.....	E. H. Snow.....	Ottawa.

KANSAS LEGISLATURE, 1893.

MEMBERS AND OFFICERS OF THE SENATE AND HOUSE OF REPRESENTATIVES.

MEMBERS OF THE SENATE.

Dist...	Name.	Post office.	County.
1	J. D. Williamson.....	Troy.....	Doniphan.
2	John M. Price.....	Atchison.....	Atchison.
3	Lucien Baker.....	Leavenworth.....	Leavenworth.
4	Edwin Taylor.....	Edwardsville.....	Wyandotte.
5	Solon O. Thacher.....	Lawrence.....	Douglas.
6	J. W. Parker.....	Olathe.....	Johnson.

Reports of the Kansas State Board of Agriculture

EIGHTH BIENNIAL REPORT—ROSTER FOR 1893.

299

MEMBERS OF THE SENATE—Concluded.

Dist.	Name.	Post office.	County.
7	Dr. E. T. Metcalf.....	Colony.....	Anderson.
8	W. P. Dillard.....	Fort Scott.....	Bourbon.
9	H. M. Reid.....	Fleming.....	Crawford.
10	M. A. Householder.....	Columbus.....	Cherokee.
11	J. H. Reilly.....	Parsons.....	Labette.
12	D. McTaggart.....	Liberty.....	Montgomery.
13	John C. Carpenter.....	Chanute.....	Neosho.
14	Chas. F. Scott.....	Iola.....	Allen.
15	J. W. Leedy.....	Le Roy.....	Coffey.
16	H. G. Jumper.....	Molven.....	Osage.
17	Wm. E. Sterne.....	Topeka.....	Shawnee.
18	H. F. Robbins.....	Wheaton.....	Pottawatomie.
19	James Shearer.....	Frankfort.....	Marshall.
20	William Rodgers.....	Barnes.....	Washington.
21	A. E. True.....	Vera.....	Wabunsee.
22	M. Senn.....	Enterprise.....	Dickinson.
23	Wm. A. Morgan.....	Cottonwood Falls.....	Chase.
24	Levi Dumbauld.....	Hartford.....	Lyon.
25	A. W. Dennison.....	El Dorado.....	Butler.
26	Jason Helmick.....	Cloverdale.....	Chautauqua.
27	Louis P. King.....	Tannehill.....	Cowley.
28	A. G. Forney.....	Belle Plaine.....	Sumner.
29	Ed. O'Bryan.....	Wichita.....	Sedgwick.
30	S. T. Danner.....	Newton.....	Harvey.
31	R. E. Baldwin.....	Ada.....	Ottawa.
32	George D. Bowling.....	Belleville.....	Republic.
33	Anson S. Cook.....	Beloit.....	Mitchell.
34	W. B. Helm.....	Ellsworth.....	Ellsworth.
35	John Armstrong.....	Great Bend.....	Barton.
36	J. M. Leeds.....	Turon.....	Reno.
37	H. F. Landis.....	Medicine Lodge.....	Barber.
38	Milton Brown.....	Garden City.....	Finney.
39	K. E. Willcockson.....	Oakley.....	Logan.
40	Geo. E. Smith.....	Germanatown.....	Smith.

OFFICERS OF THE SENATE.

Name.	Office.	Post office.
Percy Daniels.....	President.....	Girard.
L. P. King.....	President <i>pro tem</i>	Tannehill.
W. L. Brown.....	Secretary.....	Kingman.
David Shull.....	Sergeant-at-arms.....	Leavenworth.
A. D. Gilpin.....	Journal clerk.....	Lincoln.
A. B. Chaffee.....	Docket clerk.....	Emporia.
V. H. Biddison.....	Chaplain.....	Marysville.
Anna Cherry.....	Chief enrolling clerk.....	Parsons.
Mrs. S. N. Wood.....	Postmistress.....	Topeka.
H. H. Larimer.....	Document clerk.....	Cherokee.
A. R. Sherrill.....	Doorkeeper.....	Morrow.

MEMBERS OF THE HOUSE OF REPRESENTATIVES.

Dist.	Name.	Post office.	County.
1	J. A. Campbell.....	Severance.....	Doniphan.
2	John Seaton.....	Atchison.....	Atchison.
3	M. K. Nichols.....	Muscotah.....	Atchison.
4	C. H. Phinney.....	McLouth.....	Jefferson.
5	Lewis B. Gest.....	Valley Falls.....	Jefferson.
6	Stephen Meagher.....	Easton.....	Leavenworth.
7	H. C. F. Hackbusch.....	Leavenworth.....	Leavenworth.
8	McCoun Hunt.....	Leavenworth.....	Leavenworth.
9	J. J. McAleney.....	Kansas City, Kas.....	Wyandotte.
10	J. K. Cubbison.....	Kansas City, Kas.....	Wyandotte.
11	A. A. Burgard.....	Muncie.....	Wyandotte.
12	N. Zimmerman.....	Olathe.....	Johnson.
13	Dr. C. N. Bishoff.....	Eudora.....	Douglas.
14	Dr. N. Simmons.....	Lawrence.....	Douglas.
15	Robt. H. Semple.....	Ottawa.....	Franklin.
16	J. B. Remington.....	Osawatomie.....	Miami.



Reports of the Kansas State Board of Agriculture

300

KANSAS STATE BOARD OF AGRICULTURE.

MEMBERS OF THE HOUSE OF REPRESENTATIVES—Continued.

Dist.	Name.	Post office.	County.
17	J. R. Clark	La Cygne	Linn.
18	John G. Johnson	Garnett	Anderson.
19	L. B. Pearson	Humboldt	Allen.
20	H. J. Butler	Fort Scott	Bourbon.
21	J. A. Clark	Barnesville	Bourbon.
22	Hugh Bone	Fleming	Crawford.
23	W. H. Ryan	Brazilton	Crawford.
24	C. L. Walters	Scammonville	Cherokee.
25	Alex. Warner	Baxter Springs	Cherokee.
26	J. L. Humphrey	Mound Valley	Labette.
27	P. A. Morrison	Altamont	Labette.
28	F. M. Benefiel	Coffeyville	Montgomery.
29	J. M. Dunsmore	Thayer	Neosho.
30	Jacob Lamb	Fredonia	Wilson.
31	J. H. Bayer	Yates Center	Woodson.
32	T. C. Ballinger	Burlington	Coffey.
33	John Graham	Perterton	Osage.
34	Thomas Chappell	Scranton	Osage.
35	A. C. Sherman	Rossville	Shawnee.
36	Wm. E. Swan	Topeka	Shawnee.
37	James A. Troutman	Topeka	Shawnee.
38	Nicholas Kline	Muscotah	Jackson.
39	J. F. Pomeroy	Holton	Jackson.
40	W. W. Price	Everest	Brown.
41	R. D. McCliman	Capitoma	Nemaha.
42	Wm. Raemer, jr.	Herkimer	Marshall.
43	A. G. Axelton	Randolph	Pottawatomie.
44	Rev. Wm. Knipe	Manhattan	Riley.
45	Dr. P. Daugherty	Junction City	Geary.
46	Joseph Treu	Halfax	Wabaunsee.
47	D. W. Eastman	Emporia	Lyon.
48	Charles Moss	Allen	Lyon.
49	E. W. Claycomb	Eureka	Greenwood.
50	G. W. Crumley	Grenola	Elk.
51	M. B. Chrisman	Wauneta	Chautauqua.
52	Ed. Green	Arkansas City	Cowley.
53	F. G. Bowers	Winfield	Cowley.
54	C. M. Noble	Freedom	Butler.
55	R. H. Chandler	Bazaar	Chase.
56	E. W. Hoch	Marion	Marion.
57	H. E. Richter	Council Grove	Morris.
58	M. P. Kelley	Chapman	Dickinson.
59	A. A. Newman	Clay Centre	Clay.
60	D. M. Watson	Enosdale	Washington.
61	J. M. Foster	White Rock	Republic.
62	S. O. Everly	Graves	Cloud.
63	Geo. McConkey	Minneapolis	Ottawa.
64	P. H. Dolan	Salina	Saline.
65	Chas. J. Stromquist	Smoky Hill	McPherson.
66	John E. Frazier	Halstead	Harvey.
67	H. W. Ruble	Greenwich	Sedgwick.
68	Geo. L. Douglass	Wichita	Sedgwick.
69	F. G. Rawson	Mount Hope	Sedgwick.
70	Dr. Wm. Hobson	Conway Springs	Sumner.
71	J. M. Doubleday	Caldwell	Sumner.
72	Geo. H. Coulson	Anthony	Harper.
73	T. S. Benefiel, sr.	Nashville	Kingman.
74	Wm. Garrison	Medicine Lodge	Barber.
75	W. F. Brown	Caven	Pratt.
76	J. F. Greenlee	Hutchinson	Reno.
77	J. W. Dix	Lerado	Reno.
78	Wm. Campbell	Antrim	Stafford.
79	M. W. Cobun	Great Bend	Barton.
80	Wm. M. Kenton	Raymond	Rice.
81	Joseph Sekavec	Alliance	Ellsworth.
82	Otis L. Atherton	Russell	Russell.
83	A. N. Whittington	Lincoln	Lincoln.
84	Geo. H. McKinnie	Beloit	Mitchell.
85	S. W. Hill	Alton	Osborne.
86	E. F. Barnett	Esbon	Jewell.
87	J. M. Helm	Lebanon	Smith.
88	P. C. Wagoner	Logan	Phillips.
89	James S. Shaw	Plainville	Rooks.
90	B. F. Replogle	Hays City	Ellis.
91	Samuel L. Hale	La Crosse	Rush.
92	A. H. Lupfer	Larned	Pawnee.
93	J. J. Wright	Kinsley	Edwards.
94	J. W. Davis	Greensburg	Kiowa.
95	T. G. Chambers	Coldwater	Comanche.

Reports of the Kansas State Board of Agriculture

EIGHTH BIENNIAL REPORT—ROSTER FOR 1893.

301

MEMBERS OF THE HOUSE OF REPRESENTATIVES—Concluded.

<i>Dist.</i>	<i>Name.</i>	<i>Post office.</i>	<i>County.</i>
96	B. F. Morris	Lexington.....	Clark.
97	M. W. Sutton.....	Dodge City.....	Ford.
98	Dr. T. C. Bowle.....	Hodgeman.....	Hodgeman.
99	Richard O. Elting.....	Kansada.....	Ness.
100	A. H. Blair.....	Wa Keeney.....	Trego.
101	Levi Pritchard.....	Hill City.....	Graham.
102	W. L. Kerr.....	Norton.....	Norton.
103	Dan. Caster.....	Oberlin.....	Decatur.
104	W. J. Barnes.....	Hoxie.....	Sheridan.
105	R. D. Anderson.....	Grinnell.....	Gove.
106	J. A. Bucklin.....	Oakley.....	Thomas.
107	Samuel Way.....	Mirage.....	Rawlins.
108	L. J. Willits.....	St. Francis.....	Cheyenne.
109	Fred. E. Yearick.....	La Blanche.....	Sherman.
110	J. F. Coulter.....	Russell Springs.....	Logan.
111	W. D. Harris.....	Sharon Springs.....	Wallace.
112	W. M. Glenn.....	Tribune.....	Greeley.
113	W. J. Chubbuck.....	Leoti.....	Wichita.
114	J. F. Pancake.....	Scott City.....	Scott.
115	C. E. Lobdell.....	Dighton.....	Lane.
116	W. R. Hopkins.....	Garden City.....	Finney.
117	F. M. Kelley.....	Kendall.....	Kearny.
118	Alfred Pratt.....	Syracuse.....	Hamilton.
119	T. M. Grissom.....	Johnson City.....	Stanton.
120	Peter Bowers.....	Ulysses.....	Grant.
121	Jos. Rosenthal.....	Santa Fe.....	Haskell.
122	O. B. Douglass.....	Ingalls.....	Gray.
123	James Wilson.....	Meade.....	Meade.
124	Dr. H. V. Nichols.....	Liberal.....	Seward.
125	A. H. Drew.....	Hugoton.....	Stevens.

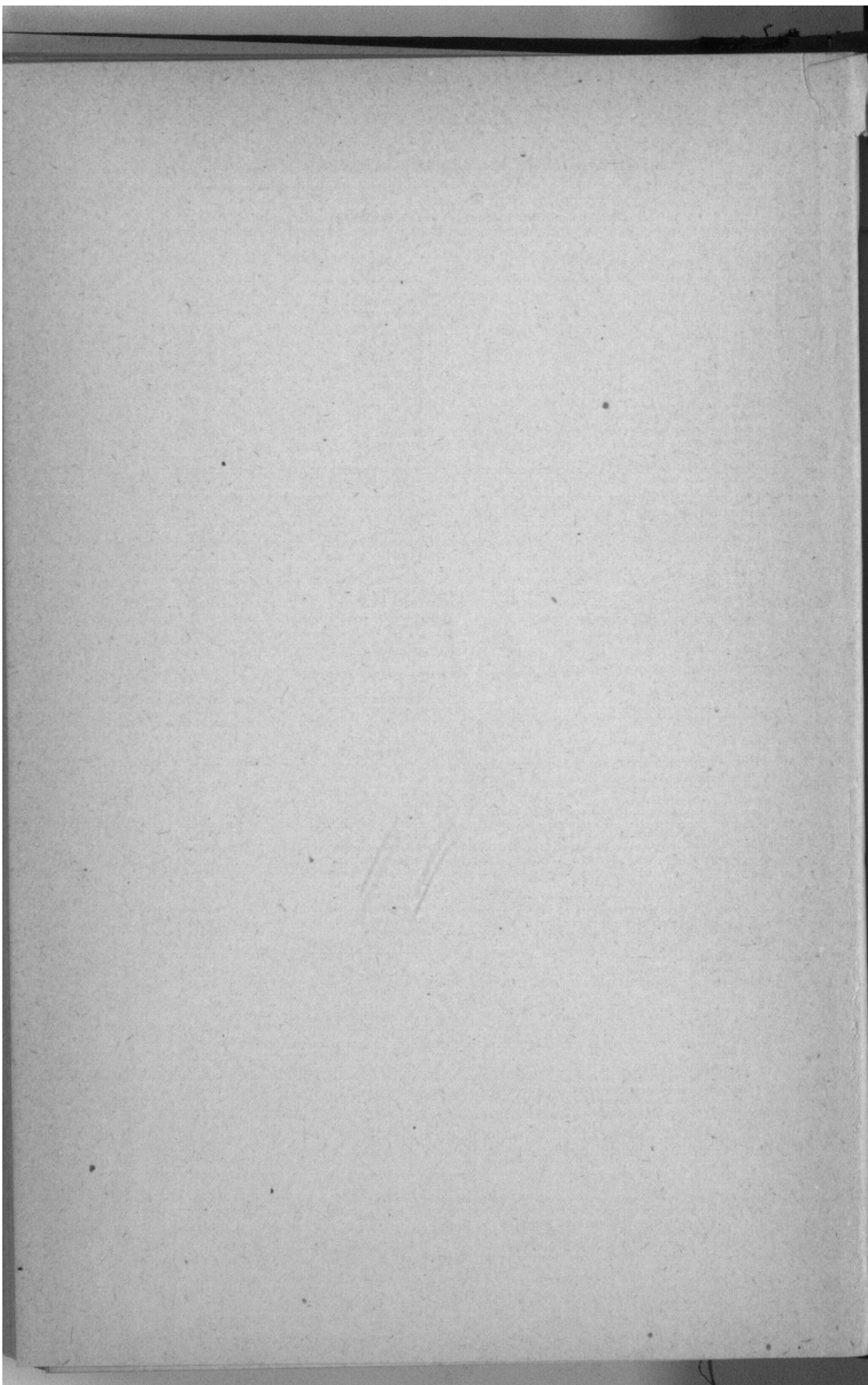
DELEGATES FROM COUNTIES NOT DISTRICTED.

T. A. Milton	Ravanna.....	Garfield.
Richard A. King.....	Richfield.....	Morton.

OFFICERS OF THE HOUSE OF REPRESENTATIVES.

<i>Name.</i>	<i>Office.</i>	<i>Post office.</i>
George L. Douglass.....	Speaker.....	Wichita.
E. W. Hoch.....	Speaker <i>pro tem</i>	Marion.
Frank L. Brown.....	Chief clerk.....	Garnett.
T. A. Fulton.....	Journal clerk.....	Atchison.
R. M. Fulton.....	Docket clerk.....	Winchester.
B. H. Bunn.....	Postmaster.....	—
C. C. Clevenger.....	Sergeant-at-arms.....	Yates Center.
Will. Danvers.....	Document clerk.....	North Topeka.
R. M. Miller.....	Doorkeeper.....	North Topeka.
Mrs. L. C. Hughes.....	Chief enrolling clerk.....	Kansas City.

Reports of the Kansas State Board of Agriculture



Reports of the Kansas State Board of Agriculture

INDEX.

	PAGE.	PART.
A.		
Allen county, statistics and general information relating to.....	1-3	I
Anderson county, statistics and general information relating to.....	4-6	I
Animals slaughtered and sold for slaughter.....	56, 57	II
Apiaculture.....	73-76	II
Area of counties.....	3, 4	II
Atchison county, statistics and general information relating to.....	6-9	I
B.		
Barber county, statistics and general information relating to.....	9-11	I
Barley, acres, product and value of.....	14, 15	II
Barton county, statistics and general information relating to.....	12-14	I
Bourbon county, statistics and general information relating to.....	15-17	I
Brown county, statistics and general information relating to.....	17-20	II
Broom-corn, acres, product and value of.....	32, 33	II
Buckwheat, acres, product and value of.....	16, 17	II
Buckwheat and buckwheat flour.....	256-258	II
Butter, pounds and value of.....	57-60	II
Butler county, statistics and general information relating to.....	20-23	I
C.		
Castor beans, acres, product and value of.....	20-22	II
Cattle, other—		
Number and value of.....	47-49	II
Mortality of.....	54, 55	II
Chase county, statistics and general information relating to.....	23-25	I
Chautauqua county, statistics and general information relating to.....	25-28	I
Cherokee county, statistics and general information relating to.....	28-30	I
Cheese, pounds and value of.....	57-60	II
Cheyenne county, statistics and general information relating to.....	30-33	I
Chinch-bugs.....	248-255	II
Churches, State summary of.....	240	II
Clark county, statistics and general information relating to.....	33-35	I
Clay county, statistics and general information relating to.....	35-38	I
Cloud county, statistics and general information relating to.....	38-40	I
Clover culture on the Western farms.....	194-198	II
Coffey county, statistics and general information relating to.....	41-43	I
Comanche county, statistics and general information relating to.....	43-45	I
Corn—		
Acres, product and value of.....	9-11	II
Bushels on hand March 1, 1892.....	40-42	II
Average yield per acre, 1868 to 1892, inclusive.....	282	I
Cotton, acres, product and value of.....	25-27	II
Cowley county, statistics and general information relating to.....	46-49	I
Cows—		
Number and value of.....	46, 47	II
Mortality of.....	54-55	II
Crawford county, statistics and general information relating to.....	49-51	I
D.		
Dairying.....	188-193	II
Decatur county, statistics and general information relating to.....	51-54	I
Diagrams—		
Assessed valuation.....	280	I
Wheat, relative product of five-year periods.....	281	I
Corn, relative product of five-year periods.....	282	I
Oats, relative product of five-year periods.....	283	I
Dickinson county, statistics and general information relating to.....	54-57	I
Dogs, number of.....	52-54	II
Doniphan county, statistics and general information relating to.....	57-59	I
Douglas county, statistics and general information relating to.....	60-63	I
E.		
Edwards county, statistics and general information relating to.....	63-65	I
Elk county, statistics and general information relating to.....	65-67	I
Ellis county, statistics and general information relating to.....	68-70	I
Ellsworth county, statistics and general information relating to.....	70-73	I



Reports of the Kansas State Board of Agriculture

304

KANSAS STATE BOARD OF AGRICULTURE.

	PAGE.	PART.
F.		
Finney county, statistics and general information relating to.....	73-75	I
Flax, acres, product and value of.....	27, 28	II
Ford county, statistics and general information relating to.....	75-78	I
Forest, artificial.....	77-80	II
Franklin county, statistics and general information relating to.....	78-81	I
G.		
Garden products marketed, and value of.....	61, 62	II
Garfield county, statistics and general information relating to.....	81-83	I
Geary county, statistics and general information relating to.....	83-85	I
Geology and mineral resources of Kansas.....	99-162	II
Geological survey, practical benefits of a.....	209-214	II
Gove county, statistics and general information relating to.....	86-88	I
Graham county, statistics and general information relating to.....	88-90	I
Grant county, statistics and general information relating to.....	90-92	I
Grasses—		
Tame, acres, product and value of.....	35-38	II
Prairie, acres, product and value of.....	38, 39	II
Gray county, statistics and general information relating to.....	93, 94	I
Greeley county, statistics and general information relating to.....	95, 96	I
Greenwood county, statistics and general information relating to.....	97-99	I
H.		
Hamilton county, statistics and general information relating to.....	99-102	I
Harper county, statistics and general information relating to.....	102-104	I
Harvey county, statistics and general information relating to.....	104-107	I
Haskell county, statistics and general information relating to.....	107-109	I
Hemp, acres, product and value of.....	28-30	II
Hodgeman county, statistics and general information relating to.....	110-112	I
Horses—		
Number and value of.....	43, 44	II
Mortality of.....	54, 55	II
Horticultural products marketed, value of.....	61, 62	II
J.		
Jackson county, statistics and general information relating to.....	112-114	I
Jefferson county, statistics and general information relating to.....	114-117	I
Jewell county, statistics and general information relating to.....	117-120	I
Johnson county, statistics and general information relating to.....	120-122	I
K.		
Kearny county, statistics and general information relating to.....	122-124	I
Key to Kansas trees in their winter condition.....	181-187	II
Kingman county, statistics and general information relating to.....	125-127	I
Kiowa county, statistics and general information relating to.....	127-129	I
L.		
Labette county, statistics and general information relating to.....	130-132	I
Lane county, statistics and general information relating to.....	133-135	I
Leavenworth county, statistics and general information relating to.....	135-137	I
Lincoln county, statistics and general information relating to.....	138-140	I
Linn county, statistics and general information relating to.....	140-142	I
Live stock—		
Products of, 1890 to 1892, inclusive.....	284	I
Number and value, 1890 to 1892, inclusive.....	284	I
Loco weed.....	163-166	II
Logan county, statistics and general information relating to.....	143-145	I
Lyon county, statistics and general information relating to.....	145-147	I
M.		
Marion county, statistics and general information relating to.....	148-150	I
Marshall county, statistics and general information relating to.....	151-154	I
McPherson county, statistics and general information relating to.....	154-157	I
Meade county, statistics and general information relating to.....	157-159	I
Meteorology.....	279-289	II
Miami county, statistics and general information relating to.....	159-162	I
Milk sold, value of.....	56, 57	II
Millet and Hungarian.....	33-35	II
Mitchell county, statistics and general information relating to.....	162-165	I
Montgomery county, statistics and general information relating to.....	165-168	I
Morris county, statistics and general information relating to.....	168-170	I
Morton county, statistics and general information relating to.....	170-172	I
Horses and asses—		
Number and value of.....	44-46	II
Mortality of.....	54, 55	II

Reports of the Kansas State Board of Agriculture

EIGHTH BIENNIAL REPORT—INDEX.

305

N.	PAGE.	PART.
Nemaha county, statistics and general information relating to.....	173-175	I
Neosho county, statistics and general information relating to.....	176-178	I
Ness county, statistics and general information relating to.....	179-181	I
Norton county, statistics and general information relating to.....	181-184	I
Nurseries and small fruits.....	69-71	II
O.		
Oats—		
Acres, product and value of.....	11, 12	II
Average yield per acre, 1868 to 1892, inclusive.....	283	I
Orchards.....	62-68	II
Organization of counties, date of.....	3, 4	II
Osage county, statistics and general information relating to.....	184-187	I
Osborne county, statistics and general information relating to.....	187-189	I
Ottawa county, statistics and general information relating to.....	190-192	I
P.		
Pawnee county, statistics and general information relating to.....	192-195	I
Phillips county, statistics and general information relating to.....	195-198	I
Population—		
State summary of.....	3, 4	II
Of cities.....	5	II
Postal guide.....	290-297	II
Potatoes—		
Irish, acres, product, and value of.....	17-19	II
Sweet, acres, product, and value of.....	19, 20	II
Pottawatomie county, statistics and general information relating to.....	198-200	I
Poultry and eggs sold.....	56, 57	II
Pratt county, statistics and general information relating to.....	201-203	I
Proceedings of annual meetings, 1892, 1893.....	91-98	II
R.		
Rawlins county, statistics and general information relating to.....	203-206	I
Reno county, statistics and general information relating to.....	206-209	I
Republic county, statistics and general information relating to.....	209-211	I
Rice county, statistics and general information relating to.....	211-214	I
Riley county, statistics and general information relating to.....	214-217	I
River county, statistics and general information relating to.....	217-219	I
Rooks county, statistics and general information relating to.....	219-222	II
Roster.....	222-224	I
Rush county, statistics and general information relating to.....	12-14	II
Russell county, statistics and general information relating to.....		
Rye, acres, product and value of.....		
S.		
Saline county, statistics and general information relating to.....	224-227	I
Salt in Kansas.....	167-180	II
Schools, public.....	215-239	II
Scott county, statistics and general information relating to.....	227-229	I
Sedgwick county, statistics and general information relating to.....	229-232	I
Seward county, statistics and general information relating to.....	232-234	I
Shawnee county, statistics and general information relating to.....	235-238	I
Sheep—		
Number and value of.....	49, 50	II
Mortality of.....	54, 55	II
Sheridan county, statistics and general information relating to.....	238-240	I
Sherman county, statistics and general information relating to.....	240-242	I
Short-horns and thoroughbred cattle.....	199-208	II
Smith county, statistics and general information relating to.....	243-245	I
Sorghum, acres, product and value of.....	22-24	II
Stafford county, statistics and general information relating to.....	246-248	I
Stanton county, statistics and general information relating to.....	248-250	I
Stevens county, statistics and general information relating to.....	251-253	I
Sugar industry of Kansas.....	242-247	II
Summary of the State, 1891, 1892.....	80, 81	II
State summary of field crops, 1877 to 1892, inclusive.....	81-87	I
Sumner county, statistics and general information relating to.....	253-256	I
Swine—		
Number and value of.....	51, 52	II
Mortality of.....	54, 55	II
T.		
Thomas county, statistics and general information relating to.....	256-258	I
Tobacco, acres, product and value of.....	30, 31	II
Trees—		
Key to, in their winter condition.....	181-186	I
Variety and distribution of.....	259-274	I
Trego county, statistics and general information relating to.....	258-260	I

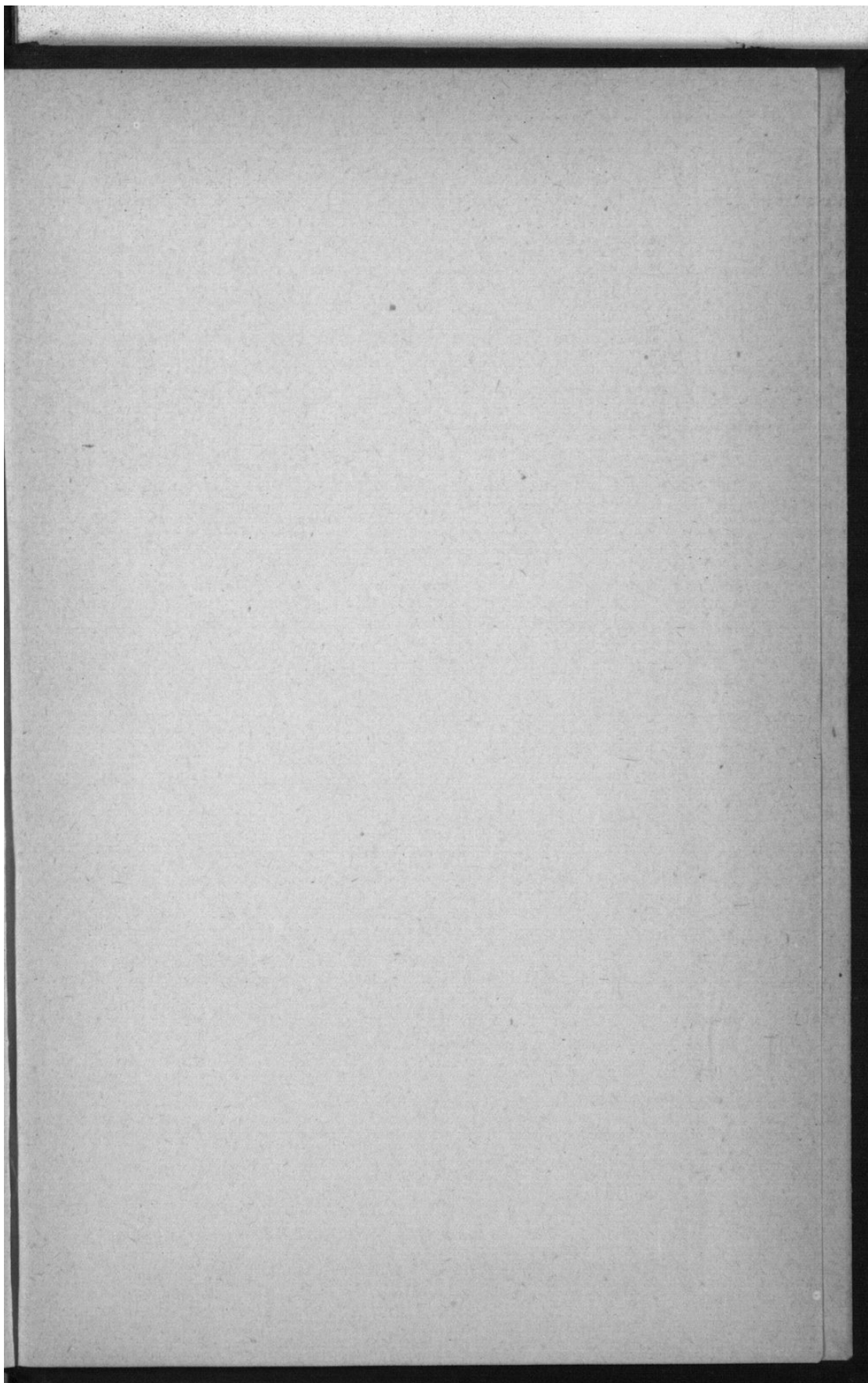
Reports of the Kansas State Board of Agriculture

306

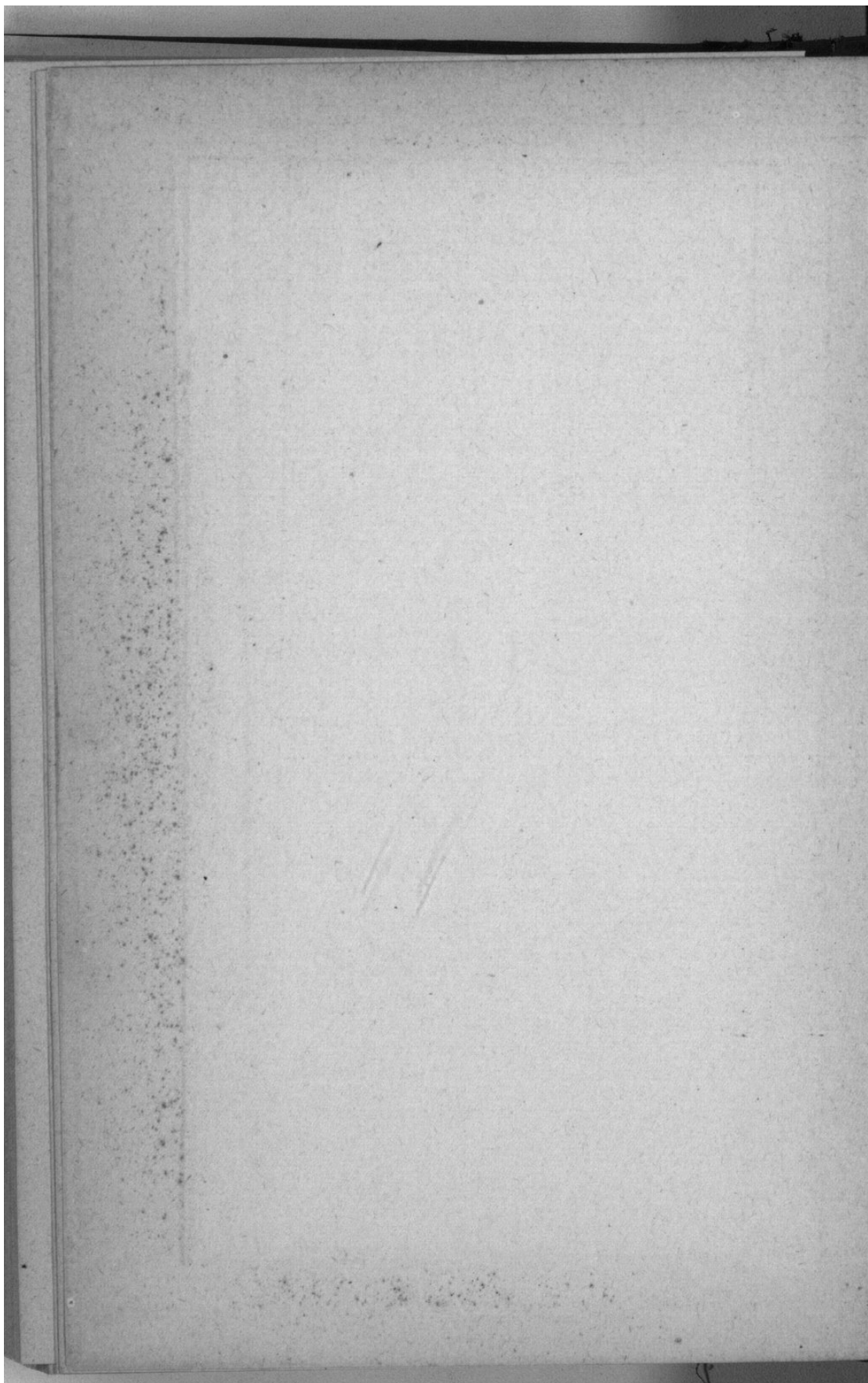
KANSAS STATE BOARD OF AGRICULTURE.

	PAGE.	PART.
V.		
Vacant lands.....	275-278	II
Valuation, assessed, of different kinds of property.....	88, 89	II
Value of all farm products.....	87	II
Vineyards.....	72, 73	II
W.		
Wabaunsee county, statistics and general information relating to.....	260-263	I
Wallace county, statistics and general information relating to.....	263-265	I
Washington county, statistics and general information relating to.....	266-268	I
Wheat—		
Winter, acres, product and value of.....	6, 7	II
Spring, acres, product and value of.....	8, 9	II
On hand March 1, 1892.....	40-42	II
Average yield per acre, 1868-'92, inclusive.....	281	I
Wichita county, statistics and general information relating to.....	269-271	I
Wilson county, statistics and general information relating to.....	271-273	I
Woodson county, statistics and general information relating to.....	273-276	I
Wool marketed, value of.....	61, 62	II
Wool clip, pounds and value of.....	57-60	II
Wyandotte county, statistics and general information relating to.....	276-279	I

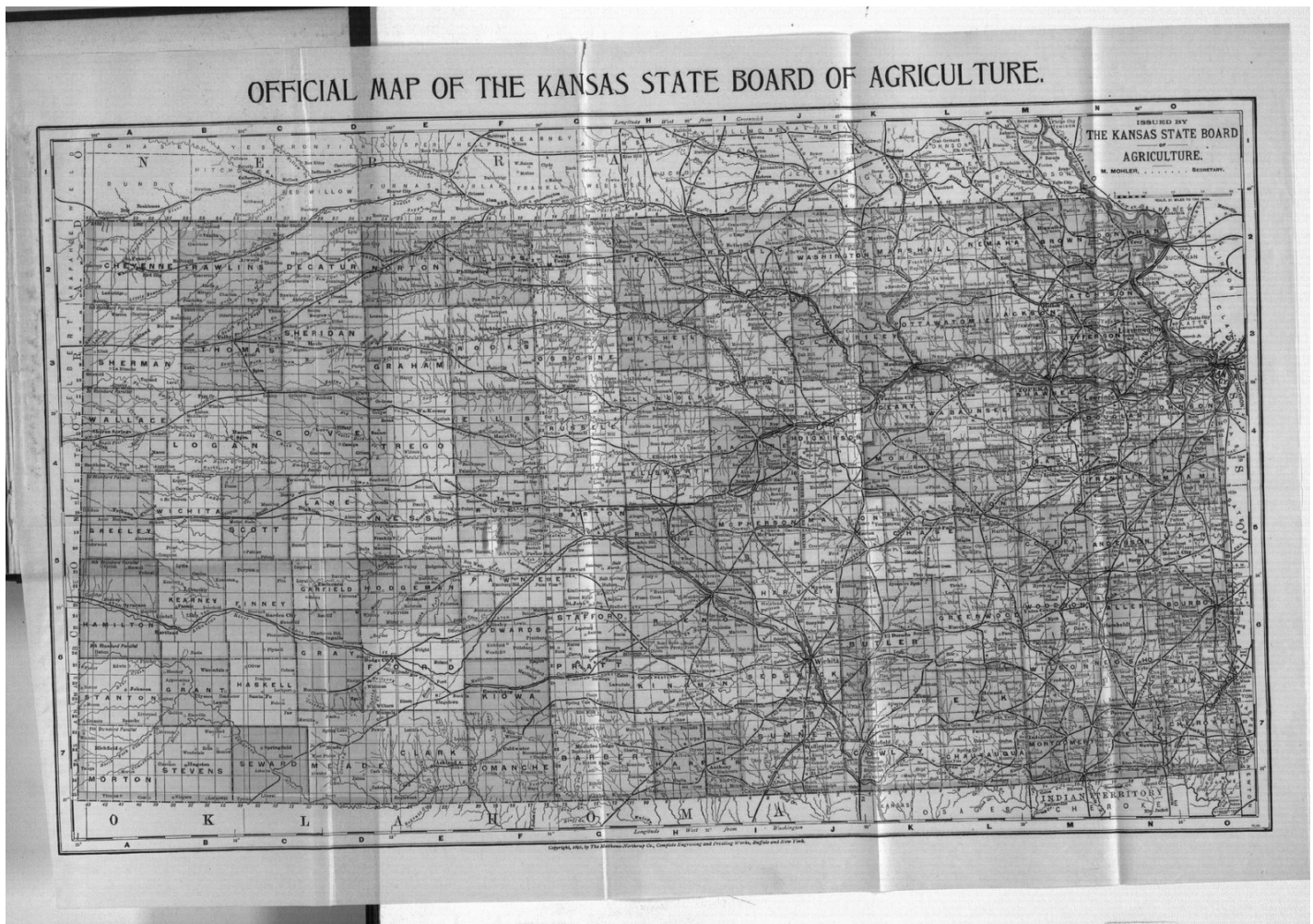
Reports of the Kansas State Board of Agriculture

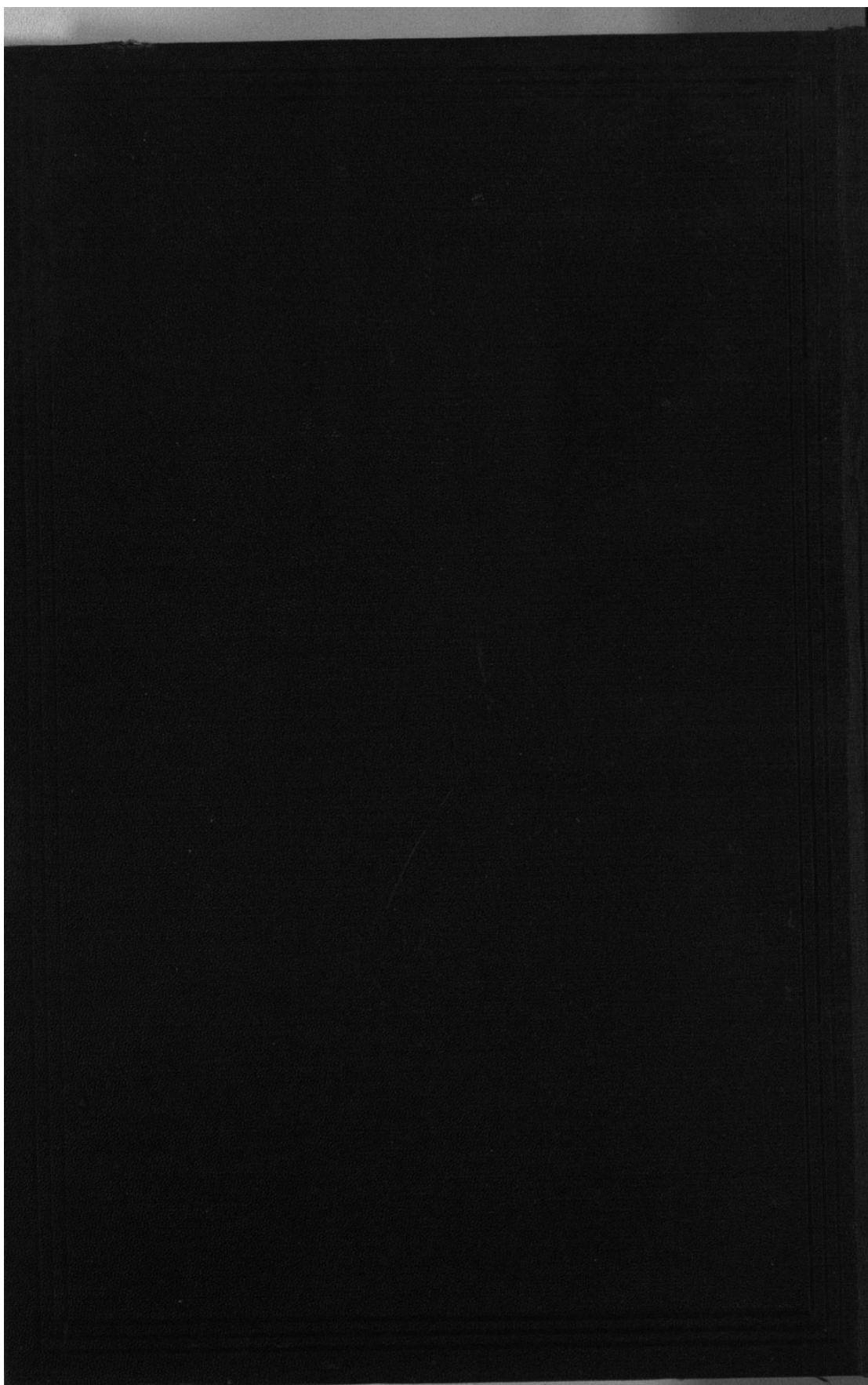


Reports of the Kansas State Board of Agriculture



Reports of the Kansas State Board of Agriculture





Reports of the Kansas State Board of Agriculture

