

Railroad passes to various stations

Railroad passes issued to F.L. Vandergrift to various stations. The passes are part of the George Allen Root Coll.

Date: Between 1895 and 1900

Callnumber: K 385 V.2 Railroad Pamphlets

KSHS Identifier: DaRT ID: 210204

Item Identifier: 210204

www.kansasmemory.org/item/210204





Railroad passes to various stations

THE
Missouri Pacific
RAILWAY COMPANY.
LEASED, OPERATED & INDEPENDENT LINES.
LIMITED PASS.

PASS *G. I. Vandegrift*
stations in Kansas.

Between _____
Account _____ *Complimentary.*
Until *December 31st.* *1895 unless otherwise ordered.*
WHEN COUNTERSIGNED ON BACK.

No. B 905

A. B. Doddridge
GENERAL MANAGER.

KANSAS STATE
HISTORICAL SOCIETY.
45589

Railroad passes to various stations

**Not good on Suburban Trains, nor to and from
Suburban Stations.**

1895. Not Transferable. 1895.

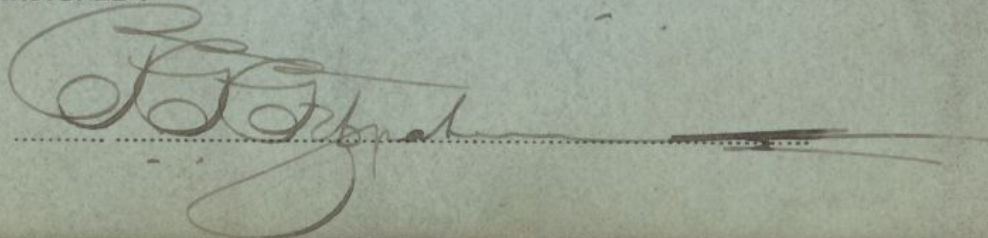
If presented by any other than the individual named, Conductor will take up the pass and collect fare.

The person accepting and using this pass thereby assumes all risk of accident or damage to person or property.

The right to cancel this pass at any time is reserved by the Company.

Not good unless countersigned by F. F. Fitzpatrick.

COUNTERSIGNED :



Railroad passes to various stations

KANSAS STATE HISTORICAL SOCIETY.
45589

THE Missouri Pacific RAILWAY COMPANY.
LEASED, OPERATED & INDEPENDENT LINES.
LIMITED PASS.

1896

PASS *F. L. Vandegrift*

Between *stations in Kansas.*

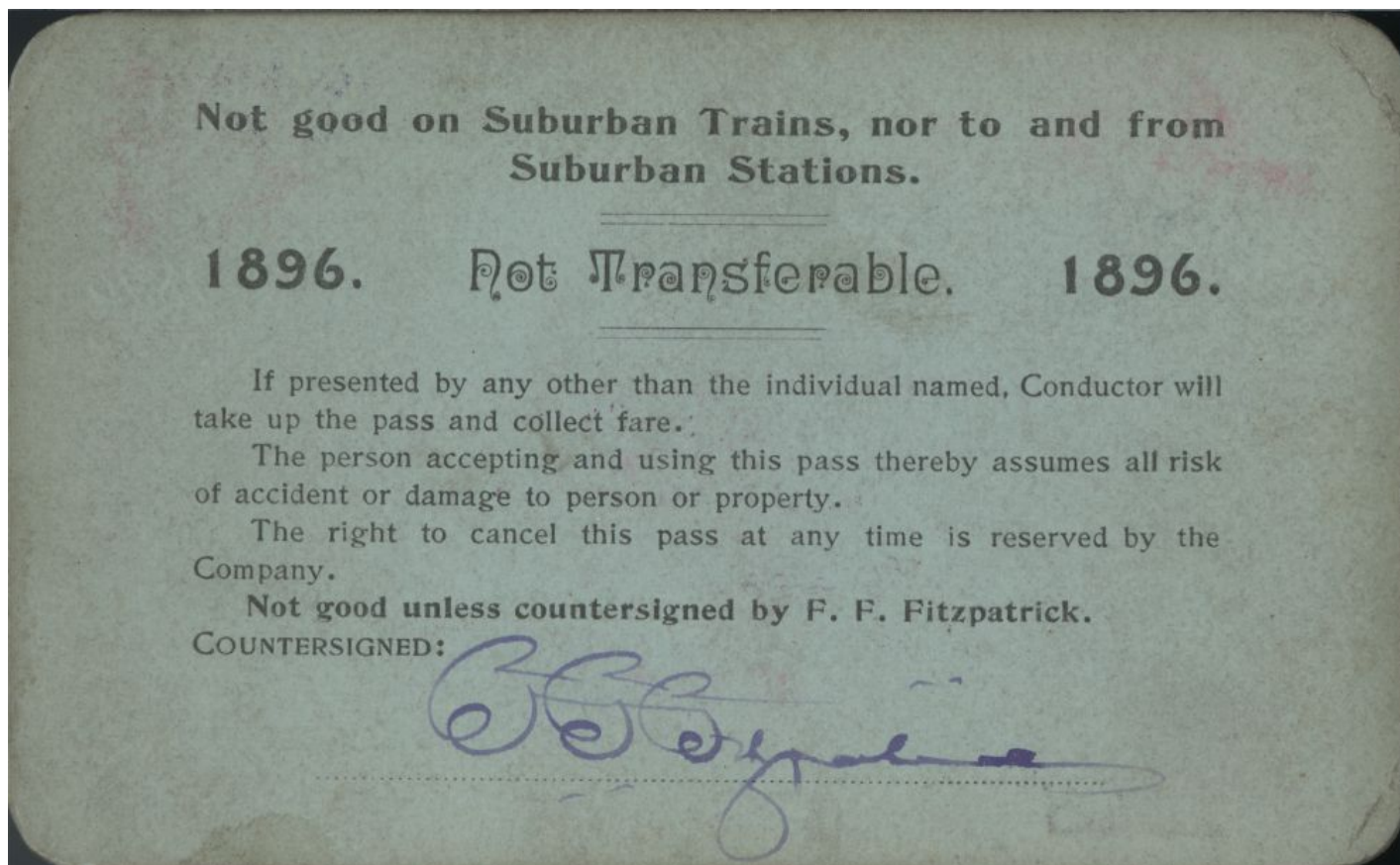
Account *Complimentary.*

Until *December 31st.* *1896 unless otherwise ordered.*
WHEN COUNTERSIGNED ON BACK.

No. B1286

H. B. Doddridge
GENERAL MANAGER.

Railroad passes to various stations





Railroad passes to various stations

1897 THE MISSOURI PACIFIC RAILWAY CO.
LEASED, OPERATED & INDEPENDENT LINES.
LIMITED PASS.

PASS *F. L. Vandegrift.*

Between *Stations in Kansas.*

Account *Complimentary.*

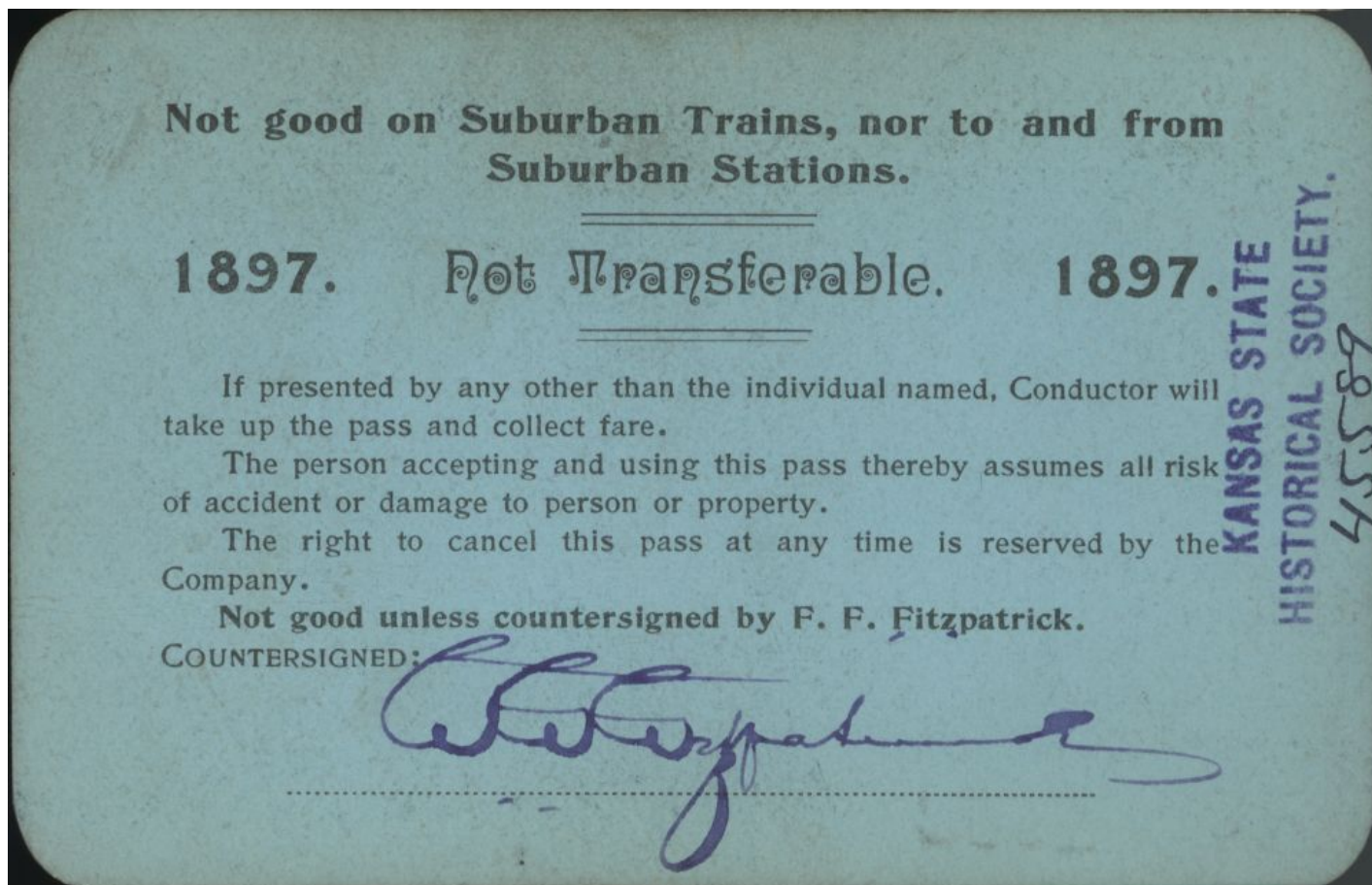
Until December 31st 1897 unless otherwise ordered.
WHEN COUNTERSIGNED ON BACK.

No. B *1682*

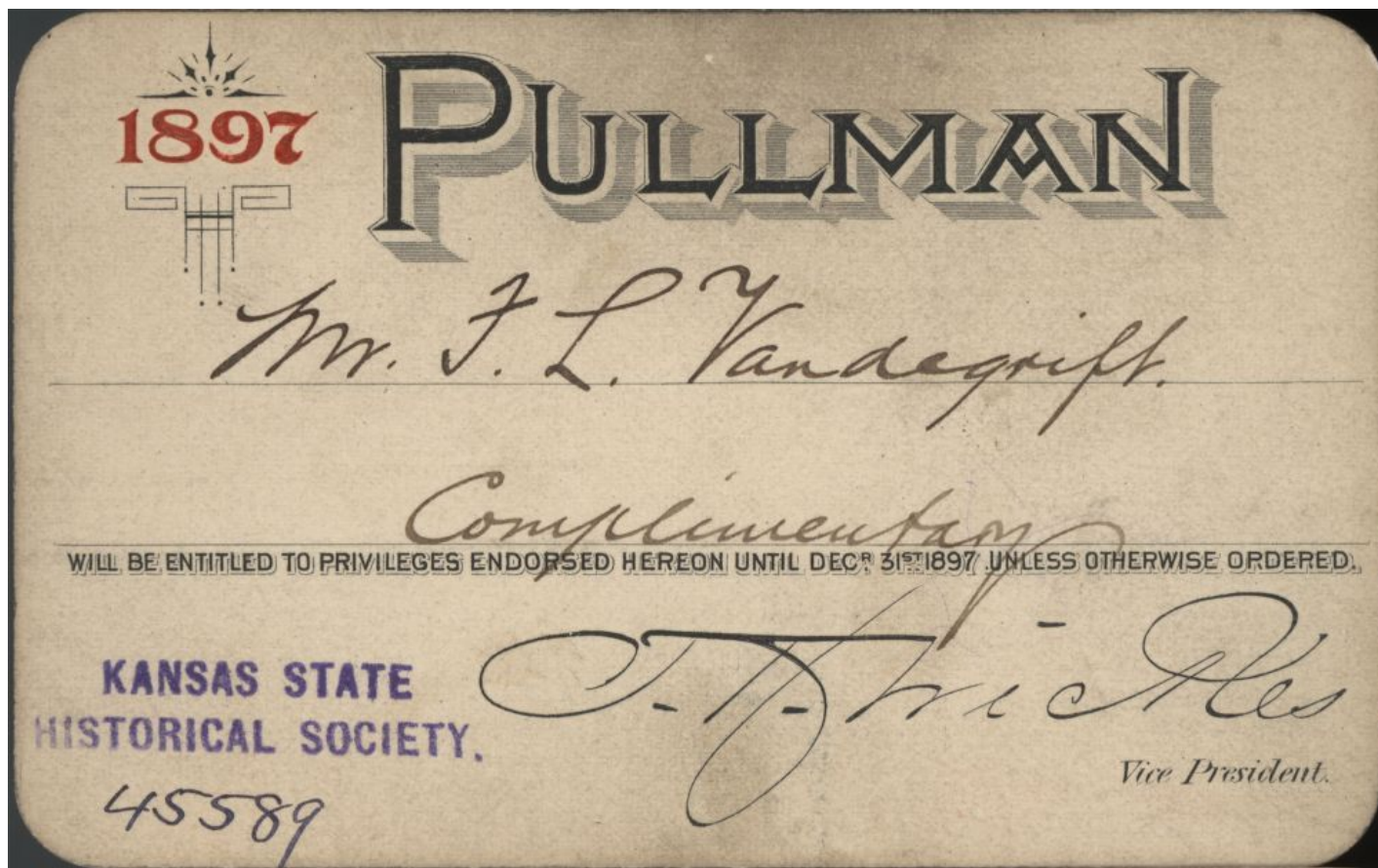
R. B. Doddridge
GENERAL MANAGER.



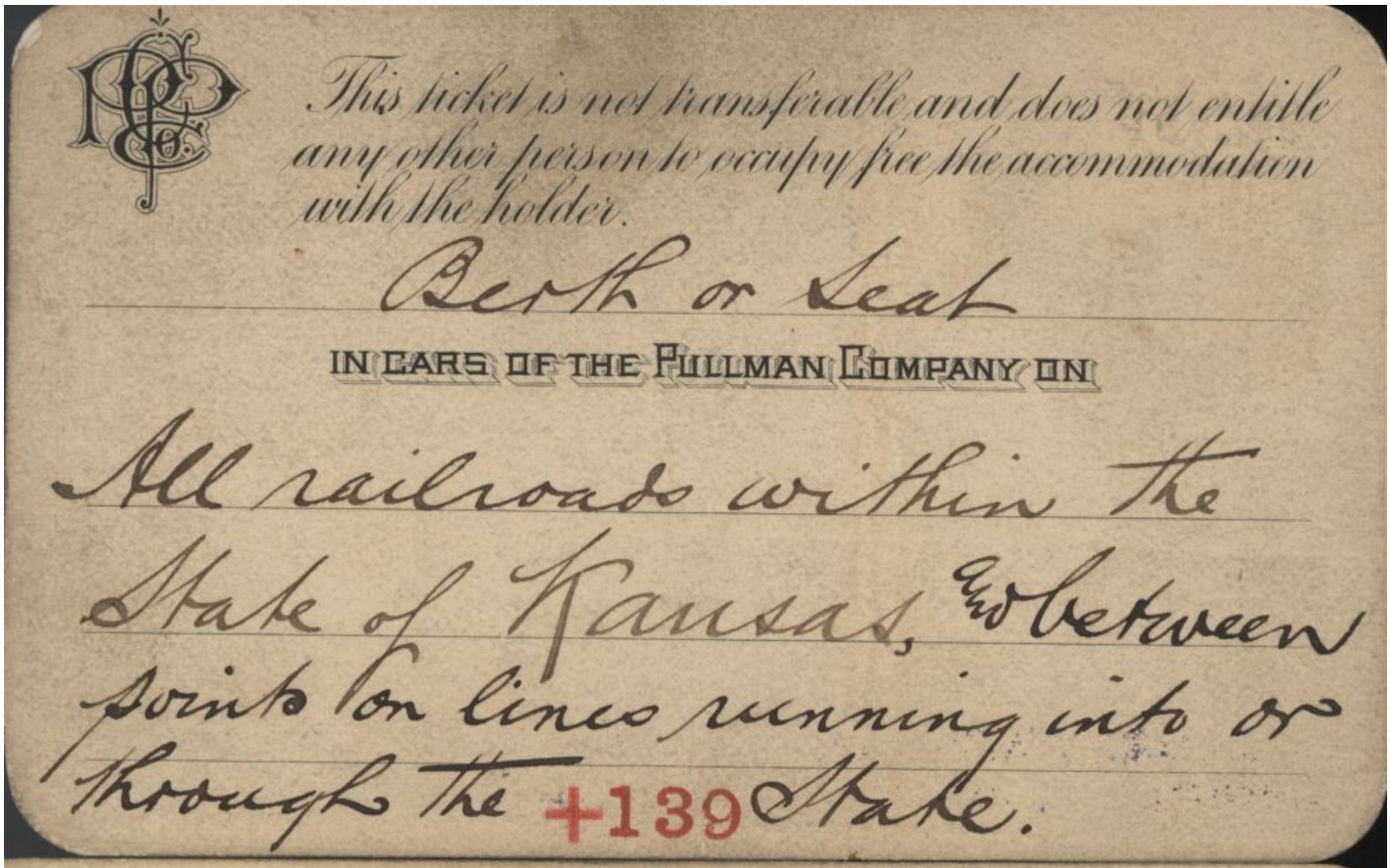
Railroad passes to various stations



Railroad passes to various stations



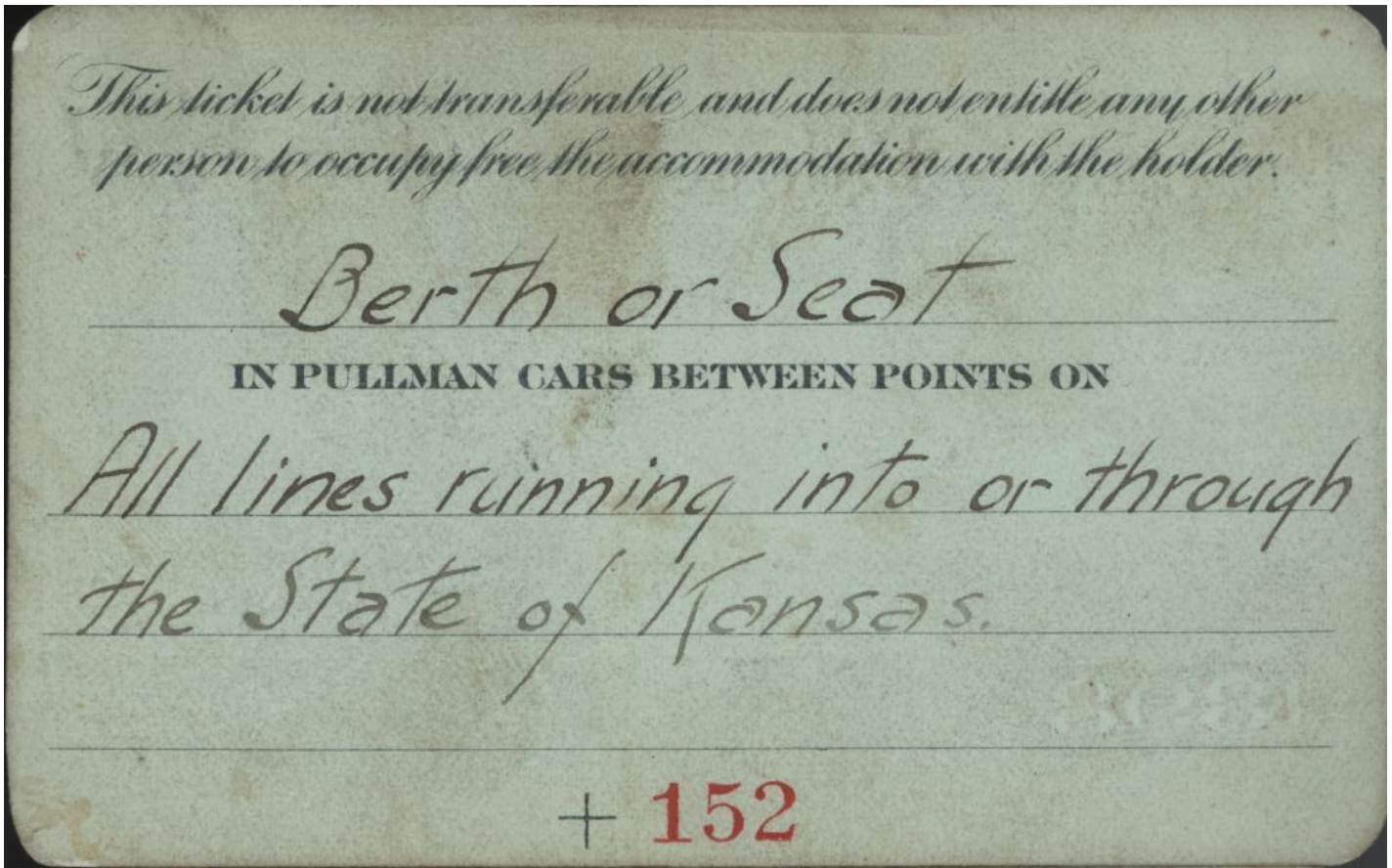
Railroad passes to various stations



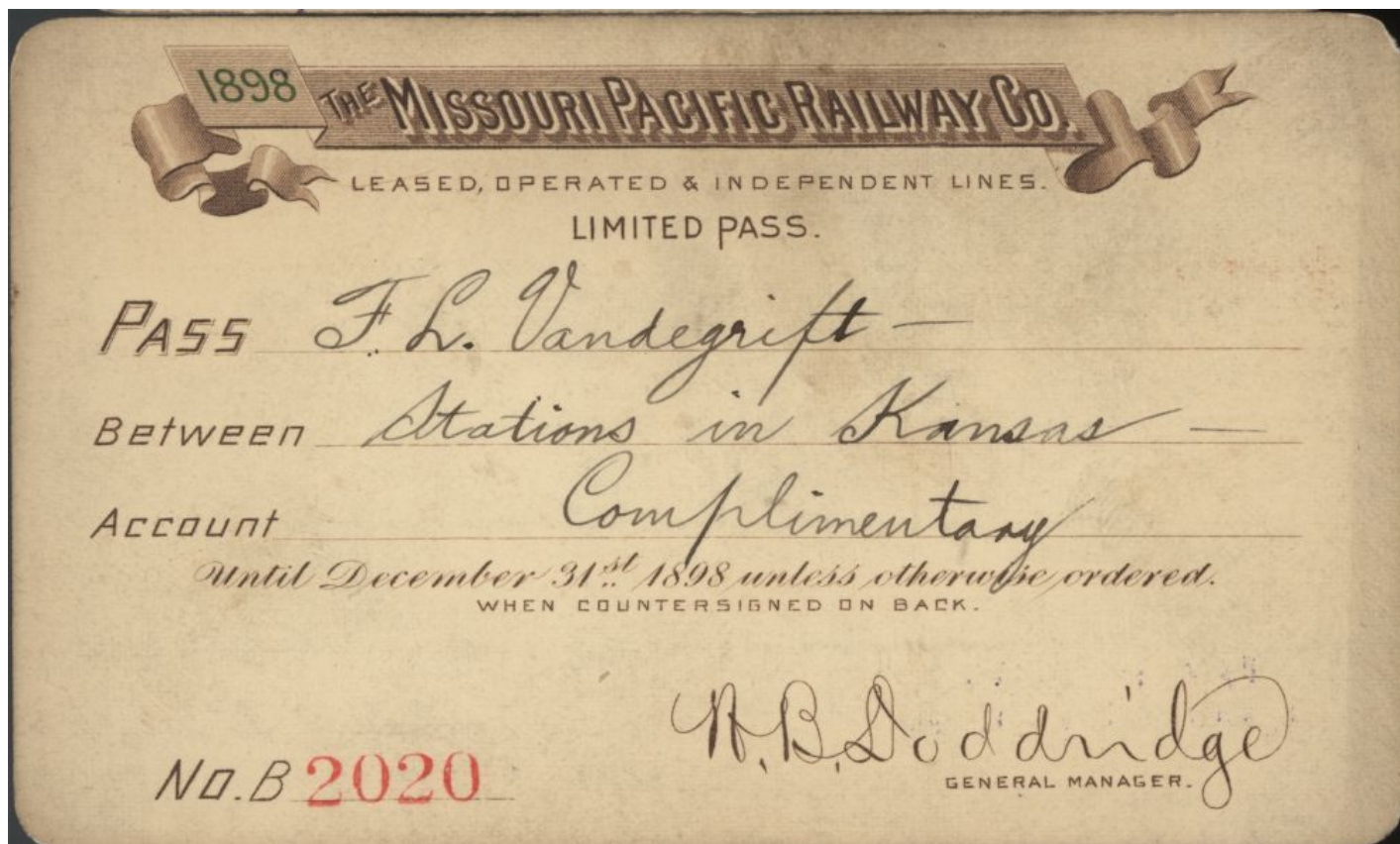
Railroad passes to various stations



Railroad passes to various stations



Railroad passes to various stations





Railroad passes to various stations

**Not good on Suburban Trains, nor to and from
Suburban Stations.**

1898.

Not Transferable.

1898.

If presented by any other than the individual named, Conductor will take up the pass and collect fare.

The person accepting and using this pass thereby assumes all risk of accident or damage to person or property.

The right to cancel this pass at any time is reserved by the Company.

Not good unless countersigned by W. A. Robinson.
COUNTERSIGNED:

W. A. Robinson

KANSAS STATE

HISTORICAL SOCIETY

45589

Railroad passes to various stations



Railroad passes to various stations

3072

KANSAS STATE
HISTORICAL SOCIETY.
45589

THIS FREE TICKET IS NOT TRANSFERABLE, and is void if presented by any other than the person named, or if any alteration or erasure is made upon it.

The person accepting this ticket assumes all risk of accidents and expressly agrees that the company shall not be liable, under any circumstances, whether of negligence by their agents or otherwise, for any injury to the person or any loss or injury to the property of the passenger using this ticket.

I accept the above conditions.

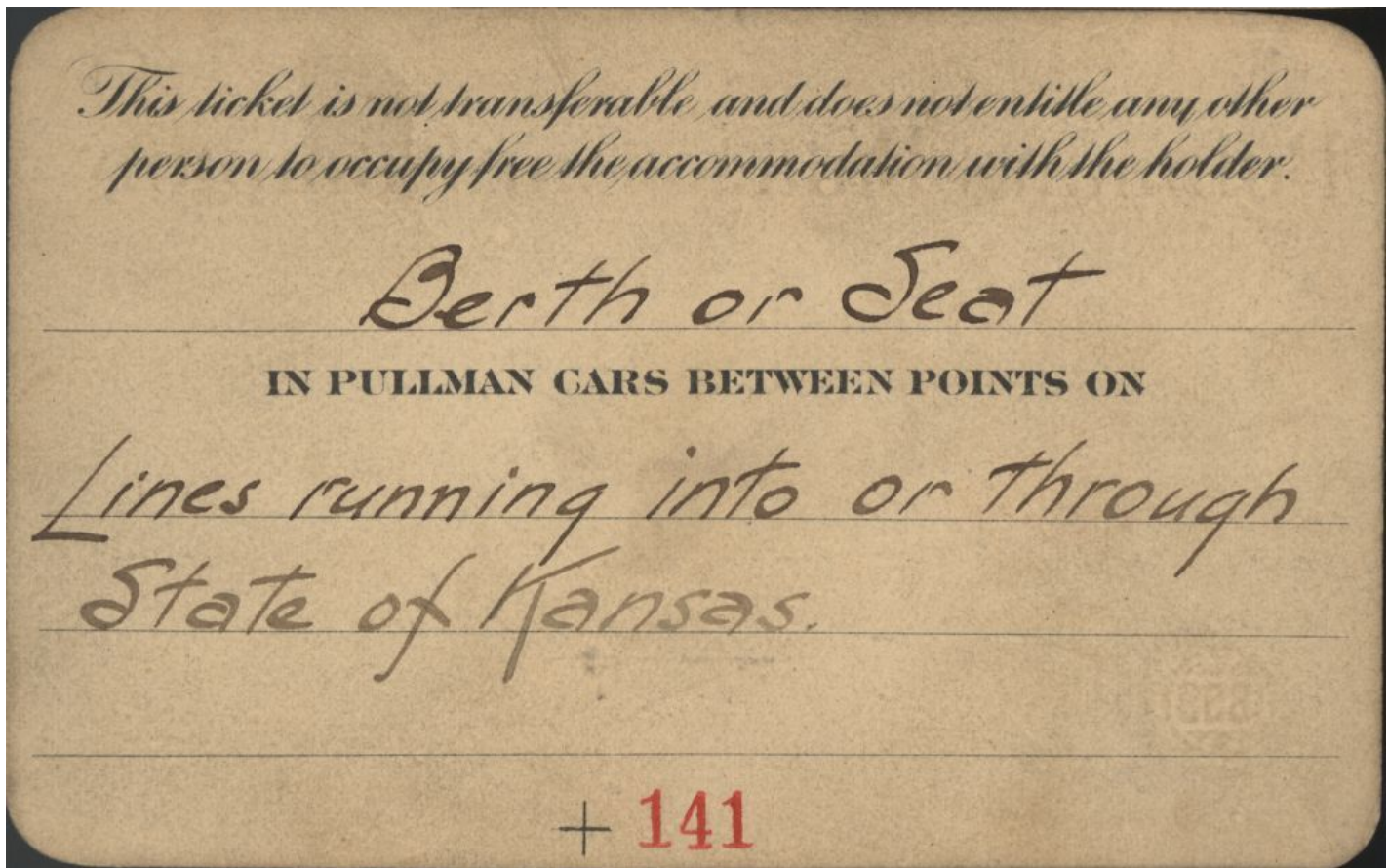
F L Vandegriff
(Sign in ink.)

Conductors will not recognize this pass until properly signed.

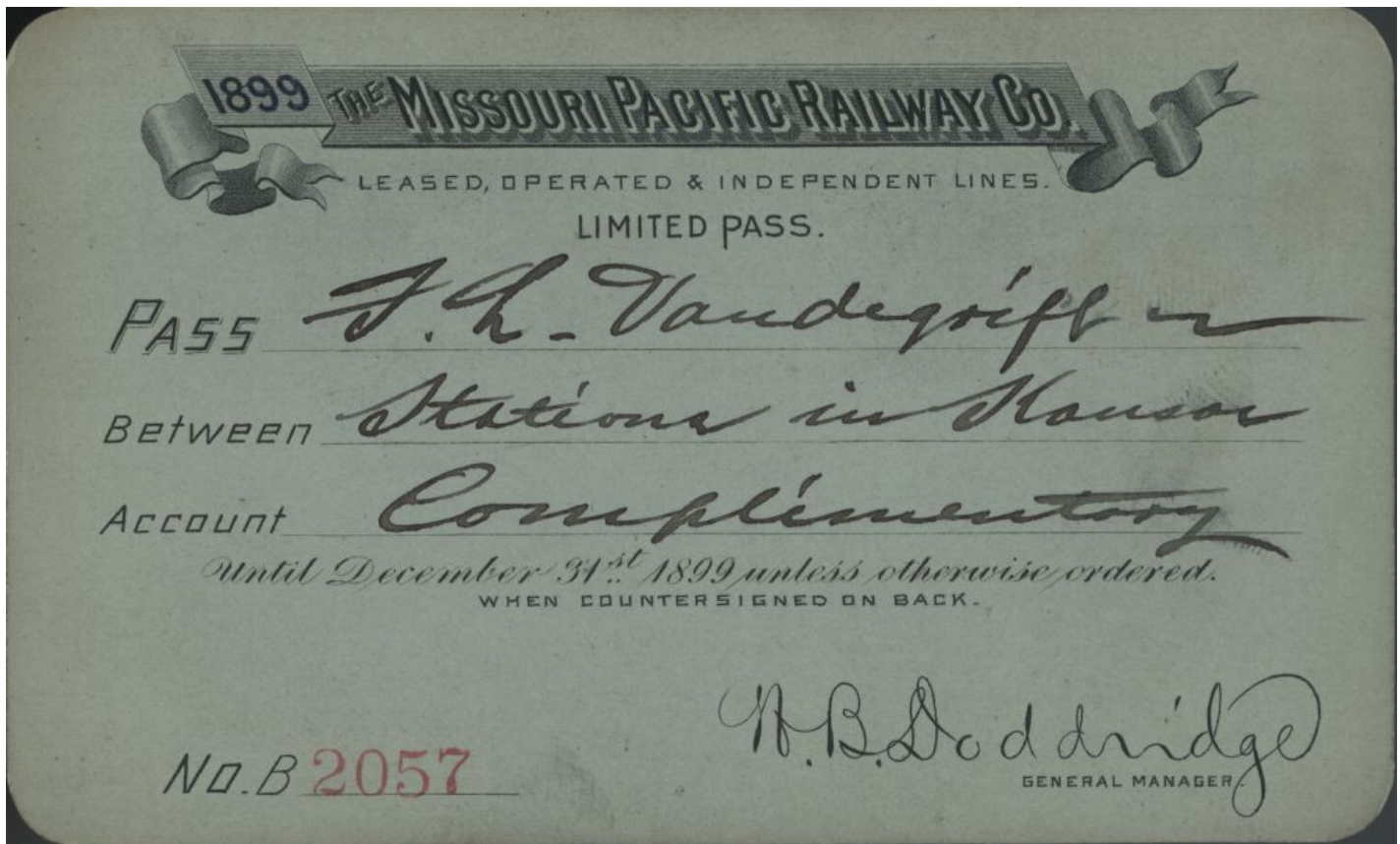
Railroad passes to various stations



Railroad passes to various stations

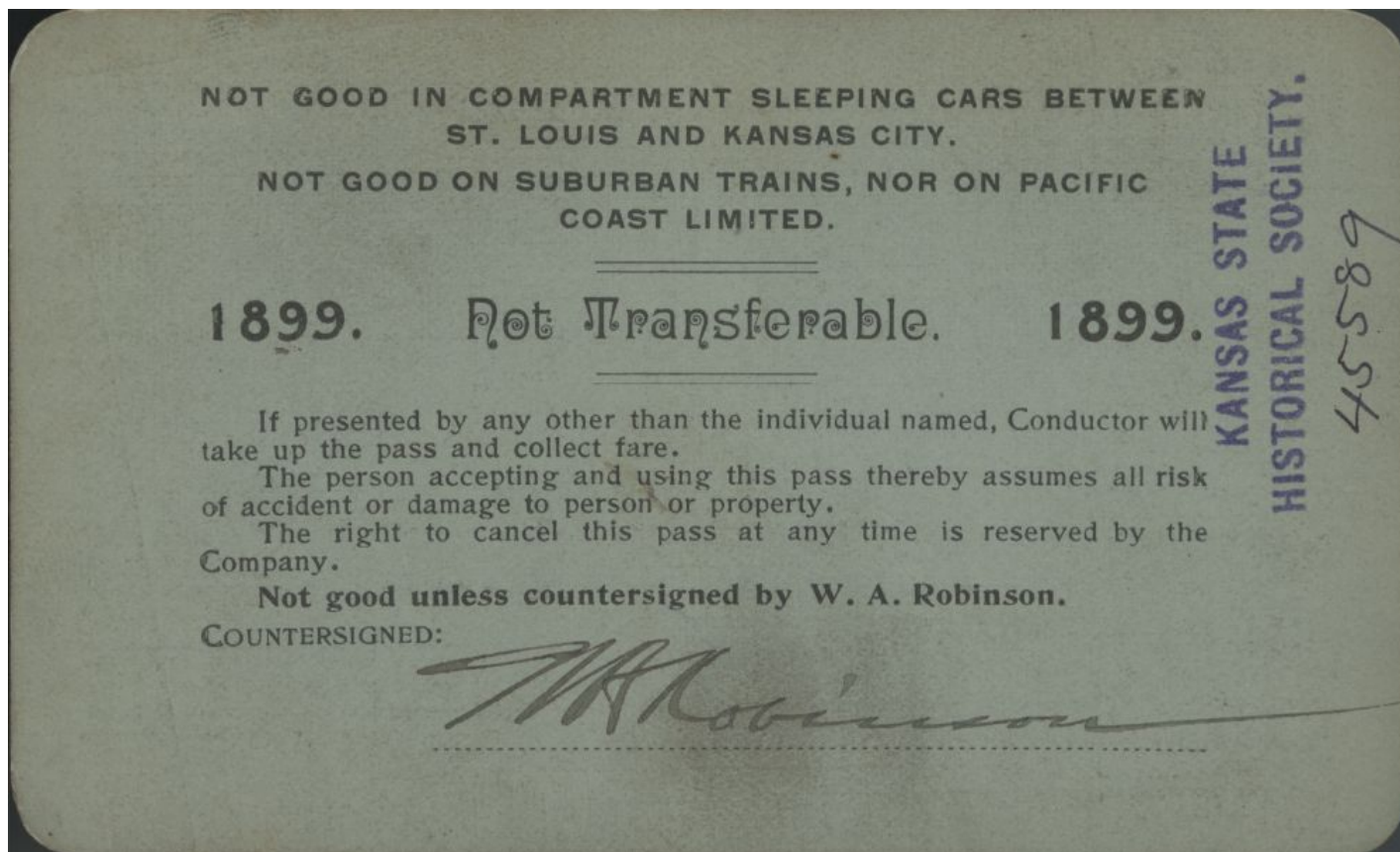


Railroad passes to various stations





Railroad passes to various stations



Railroad passes to various stations



Railroad passes to various stations

1900.

CONDITIONS.

NOT GOOD ON LIMITED TRAINS BETWEEN
SPRINGFIELD AND KANSAS CITY FOR INTER-
MEDIATE POINTS EAST OF
PASSAGE TO OMAHA FROM POINTS EAST OF
SPRINGFIELD

This Pass will be void if any alteration, addition or erasure is made upon it
IT IS NOT TRANSFERABLE,
and if presented by any other than the person to whom issued, the conductor will take it up and collect full fare.

The acceptance of it is a waiver of all claims on the
Kansas City, Fort Scott & Memphis R. R. Co., the
Kansas City, Clinton & Springfield R. R. Co., and
the Current River R. R. Co.,
and each of them, for injury to the person or for loss of or damage to the property of the individual using it

I hereby accept this free transportation on the above conditions.

FL Vandegrift

NOT GOOD UNLESS SIGNED IN INK BY THE PERSON TO WHOM ISSUED.

COUNTERSIGNED:

[Signature]

No. B **793**