

## Plat book, Coffey County, Kansas

### Section 2, Pages 31 - 40

This atlas provides plat maps of each township within Coffey County, Kansas as of 1901. It includes the names of landowners, a patrons' directory, and detailed plats of all townships in the county.

Creator: North West Publishing Co.

Date: 1901

Callnumber: Oversize K 912.781 C65 1901

KSHS Identifier: DaRT ID: 209376

Item Identifier: 209376

[www.kansasmemory.org/item/209376](http://www.kansasmemory.org/item/209376)



KANSAS  
HISTORICAL  
SOCIETY

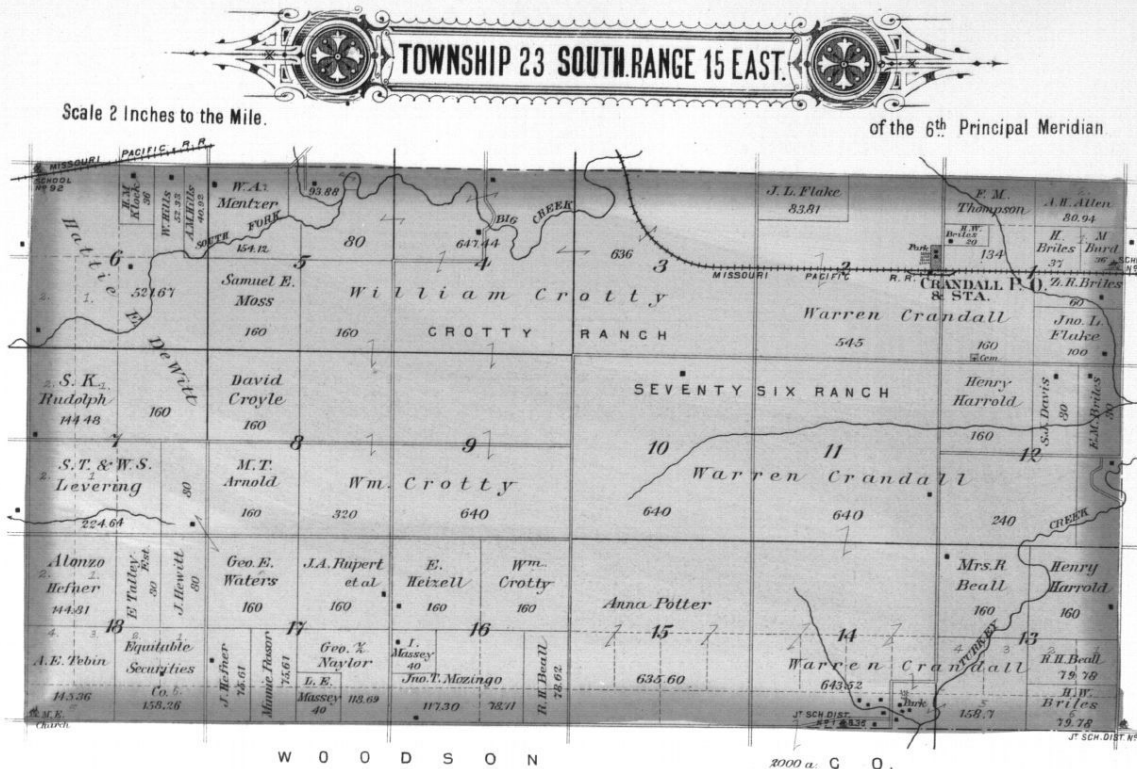


## Plat book, Coffey County, Kansas

38

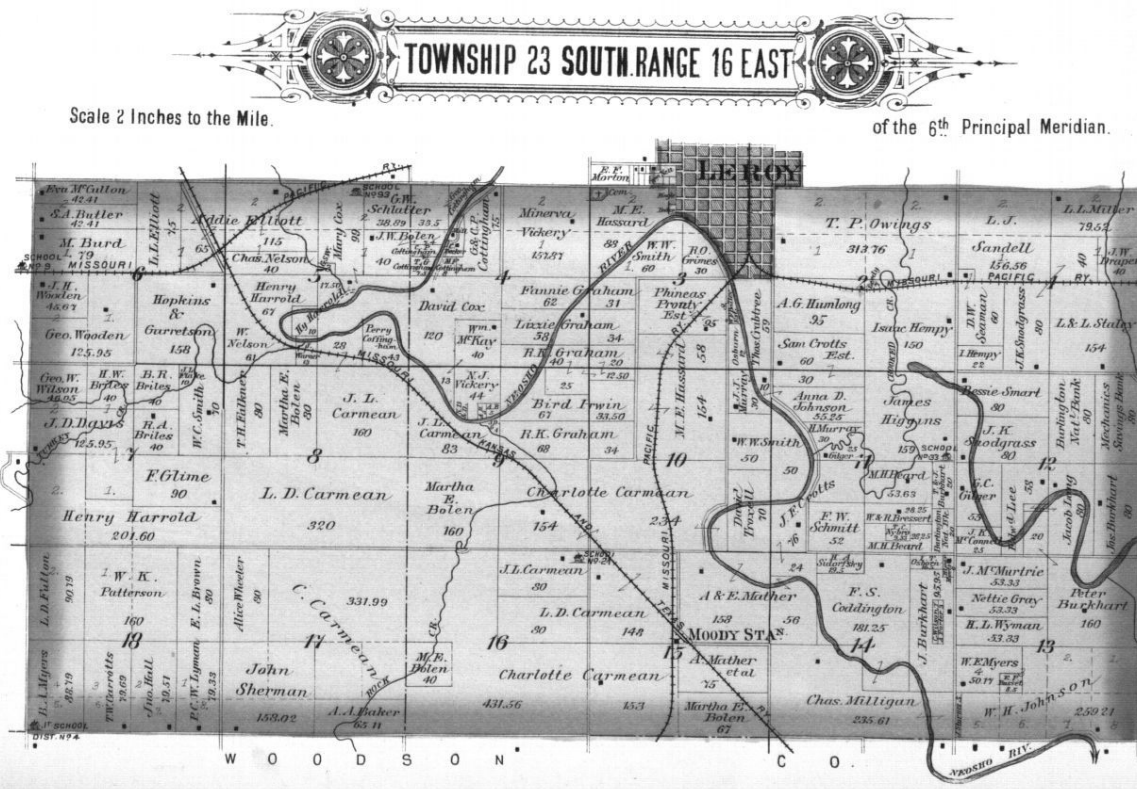
Scale 2 Inches to the Mile.

of the 6<sup>th</sup> Principal Meridian



Scale 2 Inches to the Mile.

of the 6<sup>th</sup> Principal Meridian.

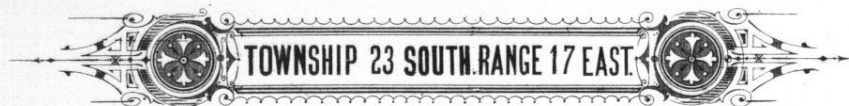




## Plat book, Coffey County, Kansas

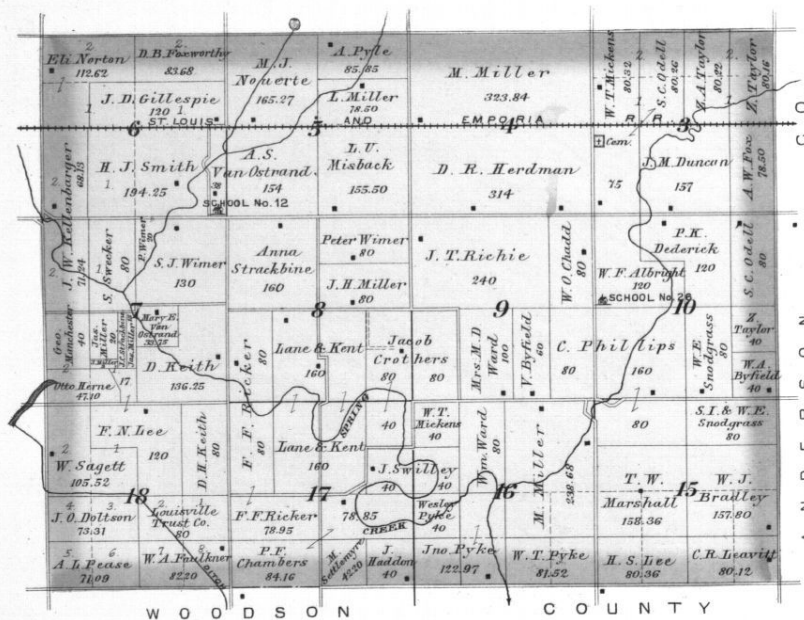
2

39



Scale 2 Inches to the Mile.

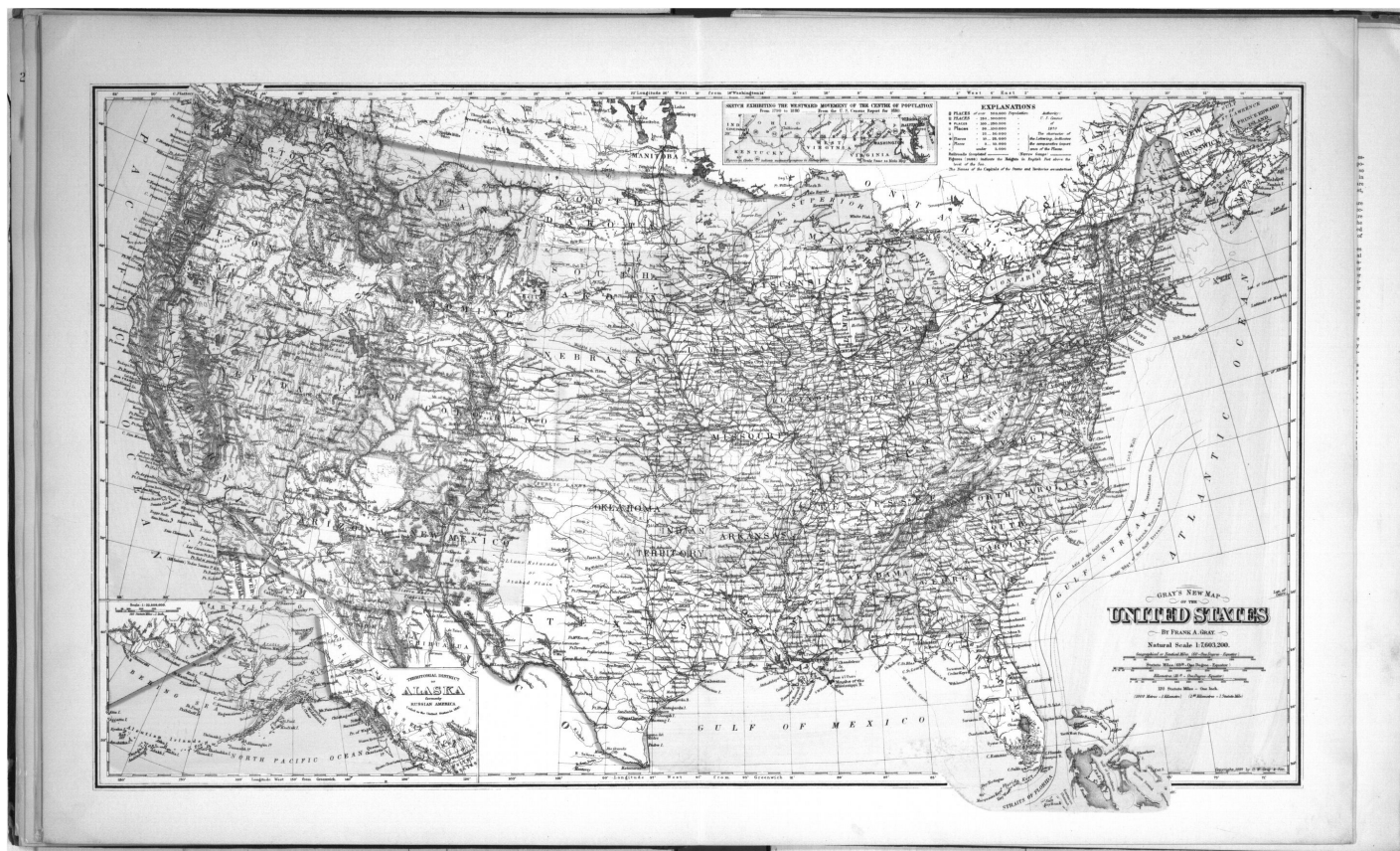
of the 6<sup>th</sup> Principal Meridian.

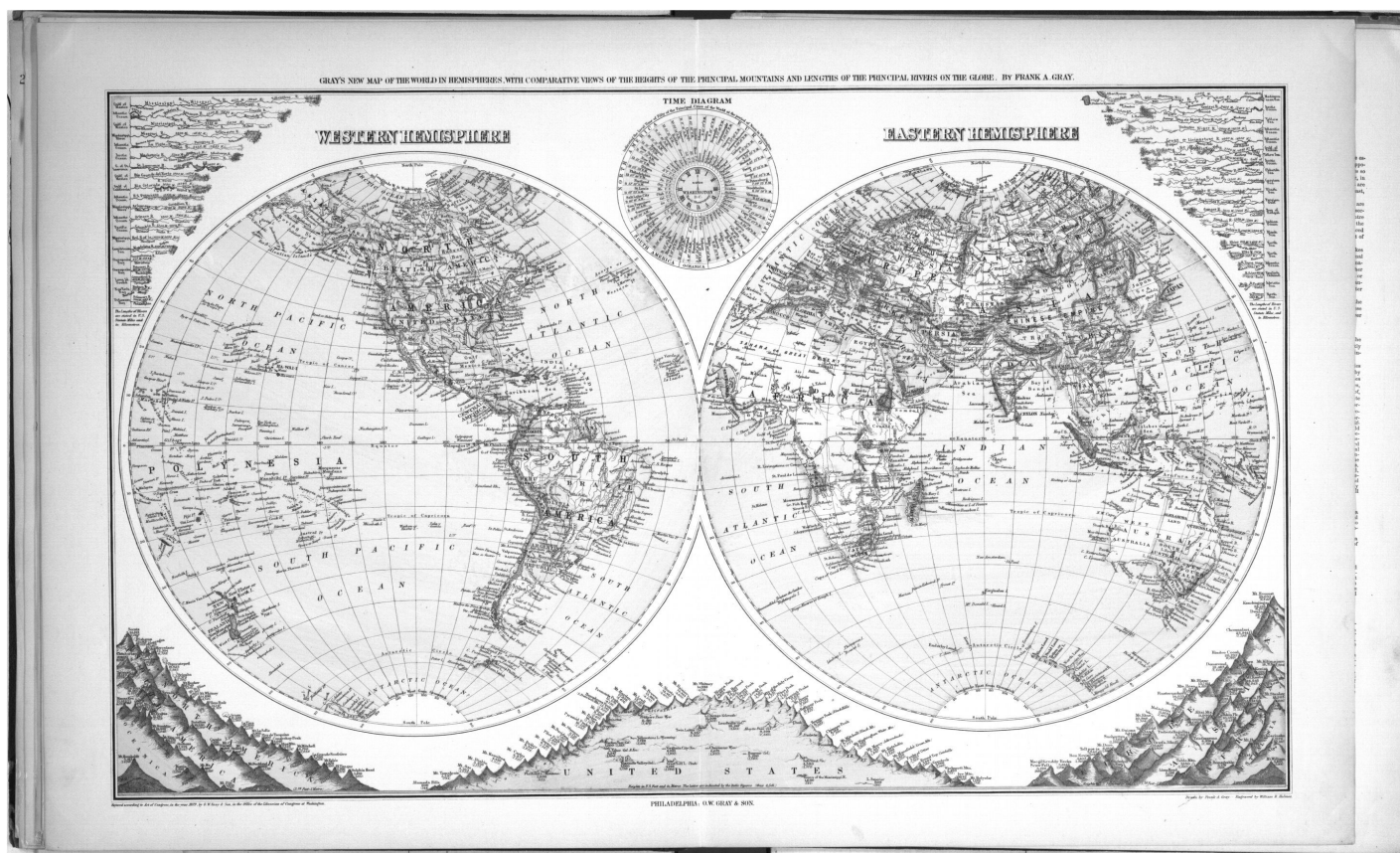


# Plat book, Coffey County, Kansas













### THE SYSTEM OF GOVERNMENT SURVEYS.

Outlined from Reports and Instructions of the U. S. General Land Office.

The present system of surveying Government lands, termed the Land System of the United States, has developed from an ordinance introduced before the Continental Congress May 7, 1784, termed "An Ordinance for ascertaining the mode of locating and disposing of lands in the Western Territory," and adopted by an act of Congress passed May 7, 1785. It had no precedent in the theory or practice of any pre-existing government, being the result of the highest order of statesmanship and exhibiting a profound knowledge of engineering science in minute details. With a few unimportant changes, it has been adopted by the Dominion of Canada. The ordinance provided for townships six miles square, containing thirty-six sections one mile square. The region embraced by the surveys under this law forms a part of the present State of Ohio, and is usually styled "Old Seven Ranges." The townships, six miles square, were laid out in ranges extending northward from the Ohio River, the townships being numbered from south to north, and the ranges from east to west. In these initial surveys only the exterior lines of the townships were surveyed, and mile corners were established on the township lines, but the plats were marked by subdivisions into sections of one mile square. The sections were numbered from one to thirty-six, commencing with number one in the southeast corner of the township, and running from south to north in each tier to number thirty-six in the northeast corner of the township. These first public surveys were made under the direction of the Geographer of the United States.

The act of Congress approved May 18, 1796, provided for the appointment of a surveyor-general, and directed the survey of the lands north-west of the Ohio River and above the mouth of the Kentucky River, "in which the titles of the Indian tribes have been extinguished." Under this law one-half of the townships surveyed were subdivided into sections "by running through the same, each way, parallel lines at the end of every two miles, and by making a corner on each of said lines at the end of every mile," and it further provided that "the sections shall be numbered, respectively, beginning with the number one in the northeast section, and proceeding west and east alternately, through the township, with progressive numbers till the thirty-sixth be completed." This method of numbering the sections is still in use, and can be seen by reference to Diagram No. 2, on reverse page.

The act of Congress, approved February 11, 1805, directed the subdivision of the public lands into quarter sections, and provides that all the corners marked in the public surveys shall be established as the proper corners of sections or subdivisions of sections which they were intended to designate, and that corners of half and quarter sections not marked shall be placed as nearly as possible "equidistant from those two corners which stand on the same line."

The act of Congress, approved April 25, 1812, provided "That there shall be established in the Department of the Treasury an office to be denominated the General Land Office, the chief officer of which shall be called the Commissioner of the General Land Office, whose duty it shall be, under the direction of the head of the department, to superintend, execute, and perform all such acts and things touching or respecting the public lands of the United States and other lands patented or granted by the United States, as have heretofore been directed by law to be done or performed in the office of the Secretary of State, of the Secretary and Register of the Treasury, and of the Secretary of War, or which shall hereafter by law be assigned to the said office."

The act of Congress, approved July 4, 1836, provided for the reorganization of the General Land Office, and that the executive duties of said office "shall be subject to the supervision and control of the Commissioner of the General Land Office under the direction of the President of the United States." The repealing clause is, "That such provisions of the act of the twenty-fifth of April, in the year one thousand eight hundred and twelve, entitled 'An act for the establishment of a General Land Office in the Department of the Treasury,' and of all acts amendatory thereof as are inconsistent with the provisions of this act, be and the same are hereby repealed."

From the wording of this act, it would appear that the control of the General Land Office was removed from the Treasury Department, and that the Commissioner reported directly to the President; but as a matter of fact the Secretary of the Treasury still had supervisory control, for the act of Congress, approved March 3, 1849, by which the Department of the Interior was established, provided "That the Secretary of the Interior shall perform all the duties in relation to the General Land Office, of supervision and appeal, now discharged by the Secretary of the Treasury." By this act the General Land Office was transferred to the Department of the Interior, where it still remains.

#### THE RECTANGULAR SYSTEM OF SURVEYS.

The public lands of the United States are ordinarily surveyed into rectangular tracts bounded by lines conforming to the cardinal points. The principal lines are designated as meridian, base, township, range, and section lines, and the bodies of land thus formed are known as townships, sections, and lots. The first recorded use of the terms "township" and "section" as applied to the public lands of the United States, is in an ordinance reported to Congress April 26, 1785. In Diagram No. 2, representing an entire township, each "section" and "lot" is plainly indicated.

#### INITIAL POINTS.

Initial points from which the lines of the public surveys are to be extended must be established whenever necessary under such special instructions as may be prescribed in each case by the Commissioner of the General Land Office. The locus of such initial points must be selected with great care and due consideration for their prominence, easy identification, and must be established astronomically. The initial point having been established, the lines of the public survey are to be extended therefrom as follows:—

Copyright secured by W. S. BROWN, 1881.

#### PRINCIPAL MERIDIAN AND BASE LINES

are extended north and south and east and west from the initial point by the use of solar instruments or transit, as may be directed by the Surveyor-General. In order to check errors in measurement, two sets of chainmen, operating independently of each other, must be employed, and the proper corners established. Principal meridians are designated by number or name. Each has its own base line, and these two lines form the basis or foundation for surveys of all lands within the territory controlled by them.

Ohio public surveys are controlled by several initial points, and by the first principal meridian coincident with the common boundary between Ohio and Indiana. Indiana surveys are controlled by the second, third, and fourth principal meridians. Wisconsin by the fourth principal meridian. Minnesota by the fifth and sixth principal meridians, also by the Black Hills meridian. Iowa, Missouri, and Arkansas by the fifth principal meridian. Kansas, Nebraska, and the greater portion of Colorado and Wyoming by the sixth principal meridian. Michigan by the Michigan meridian. Florida by the Tallahassee meridian. Alabama by the Huntsville and St. Stephens meridians. Mississippi by the St. Stephens, Choctaw, and Washington meridians. Louisiana, east of the Mississippi River, by the St. Helena meridian, and on the west by the Louisiana meridian. New Mexico by the New Mexico meridian. Arizona by the Gila and Salt River meridians. Utah by the Great Salt Lake meridian. Nevada by the Mount Diablo meridian. Idaho by the Boise meridian. Montana by the Montana meridian. California by the Mount Diablo, the San Bernardino, and the Humboldt meridians. Oregon and Washington by the Willamette meridian.

#### TOWNSHIP AND RANGE LINES

Township lines are run east and west parallel with and six miles from the base line and from each other, and the spaces between these lines are known as townships north or south, and designated by numbers according to their numerical distance from the base line. Range lines are run north and south on a true meridian, six miles from and parallel, as near as may be, with the principal meridian, and the spaces between them are known as ranges, and are designated as east or west of the principal meridian, and consecutively numbered from that line.

Diagram No. 1, on reverse page, will illustrate the system of numbering townships and ranges, north and south and east and west from the principal meridians and base lines; numbering east or west until they reach the next meridian, and north or south until they reach the next base line.

Thus, any certain township or range can readily be found within the territory embraced by this system if the numbers of the same are known referring to principal meridian and base line.

The bodies of land six miles square, formed by the intersection of the township and range lines, are called

#### CONGRESSIONAL TOWNSHIPS.

and contain, as near as may be, 36,000 acres. Congressional townships are described and located as being north or south of the base line and east or west of the principal meridian from which that particular survey is made. Thus township one north, range three west of the fifth principal meridian, would be the first township north of the base line and in the third range west from the principal meridian. The law requires that the lines of the public surveys shall be governed by the true meridian, and that the townships shall be six miles square, two things involving, in connection, a mathematical impossibility, for, strictly to conform to the meridian necessarily throws the township out of square by reason of the convergence of the meridians, and hence, by adhering to the true meridian results the necessity of departing from the strict requirements of law, as respects the precise area of townships and the subdivisions parts thereof, the townships assuming something of a trapezoidal form, which inequality develops itself more and more as the higher the latitude of the surveys.

For that reason standards and auxiliaries, which are also called correction lines, and auxiliary or guide meridians are run from time to time, and are designated by number, and as north, south, east, or west, as the case may be, from their respective base lines and principal meridians; parallels and auxiliaries are now run at intervals of twenty-four miles, dividing the country into tracts of twenty-four miles square, or sixteen townships.

Congressional townships are subdivided into thirty-six tracts, called

#### SECTIONS.

each containing as near as may be 360 acres. The thirty-six sections into which a township is subdivided are numbered, commencing with number one at the northeast angle of the township, and proceeding west to number six, and thence proceeding east to number twelve, and so on, alternately, until they number thirty-six in the southeast angle. In all cases of surveys of fractional townships, the sections should bear the same number as they would if the township was full. In all cases where the exterior lines of the townships thus subdivided into sections or half sections shall exceed, or shall not extend, six miles, the excess or deficiency shall be specially noted, and added to or deducted from the western or northern ranges of sections or half sections in such township, according as the error may be in running the lines from east to west, or from south to north; the sections and half sections bounded on the northern and western lines of such townships shall be sold as containing only the quantity expressed in the returns and plats respectively, and all others as containing the complete legal quantity.

Diagram No. 2, on the reverse page, shows an entire Congressional Township subdivided and numbered by sections, and showing excess or deficiency in area on the north and west sides of the township.

Sections are divided into quarters by straight lines run from the established quarter section corners—United States surveys—to the opposite corresponding corners, and the point of intersection of the lines so run will be the corner common to the several quarter sections, or, in other words, the northeast corner of the section; these quarter sections are designated as northeast quarter, northwest, southwest, or southeast, according to their location with regard to their common corner.

In the subdivision of quarter sections, the quarter quarter corners are to be placed at points equidistant between the section and quarter section corners and between the quarter corners and the common corner of the section, except on the last half mile of the lines closing on the north or west boundaries of a township, where they should be placed at twenty chains, proportionate measurement, to the north or west of the quarter section corner.

Fractional sections and those containing meandered rivers and lakes are also divided into 40 acre lots, as near as may be; these fractional lots are numbered from one upwards in each section. By an examination of Diagram No. 2, on reverse page, and of the maps on other pages of this work, the careful student will be enabled to describe or locate any piece of land. Numbers 1, 2, 3, 4 are the numbers of the meandered lots with areas shown: a, north quarter corner; b, east quarter corner; c, south quarter corner, and d, west quarter corner.

Proceeding down stream, the bank on the left hand is termed the "left bank" and that on the right hand the "right bank." These terms are to be universally used to distinguish the two banks of a river or stream.

#### RE-ESTABLISHMENT OF LOST CORNERS.

The original corners, where they can be found, must stand as the true corners they were intended to represent, even though not exactly where strict professional care might have placed them in the first instance.

Missing corners should be re-established in the identical localities they originally occupied. When the point cannot be determined by the existing landmarks in the field, resort must be had to the field notes of the original survey. The law provides that the lengths of the lines, as stated in the field notes, shall be considered as the true lengths thereof, and the distances between corners set down in the field notes constitute proper data from which to determine the true locality of a missing corner; hence the rule that all such should be restored at distances proportionate to the original measurements between existing original corners. That is, if the measurement between two existing corners differs from that stated in the field notes, the exact or deficiency should be distributed proportionately among the intervening section lines between the said existing corners standing in their original places. Missing corners on standard township and range lines should be restored by proportionate measurement between the nearest existing original corners on those lines. Missing section corners in the interior of townships should be re-established at proportionate distances between the nearest existing original corners north and south of the missing corners.

As has been observed, no existing original corner can be disturbed, and it will be plain that any excess or deficiency in measurements between existing corners cannot in any degree affect the distances between said existing corners, but must be added or subtracted proportionately to or from the intervals embraced between the corners which are still standing.

#### OFFICIAL SUB-DIVISIONS BY COUNTY OFFICIALS.

Various States require their county auditors or recorders to cause a survey and plat of "irregular tracts" of land to be made and placed on record, when, for assessment purposes, the descriptions are too indefinite. These become official, and title will pass as the same appears of record, by the number of each lot being given on the plat.

Diagram No. 3, on reverse page, shows a practical subdivision of a section for assessment or other purposes, with a proper description of each fractional part of the quarter section.

#### METES AND BOUNDS.

In the Eastern and New England States the system of surveying and describing lands by metes and bounds as followed prior to the establishment of the rectangular system of surveys still exists. The system at its best is imperfect and uncertain in its working, having no known lines for base of surveys, and seldom any official plat for references as to initial points. Diagram No. 4 shows a tract of land described and platted by "metes and bounds," as the same would appear in deeds.

#### STANDARD TIME.

What is known as the "new standard time," was adopted by agreement of all the principal railroads of the United States at 12 o'clock, noon, on Nov. 18, 1883. The system divides the Continent into five longitudinal belts, and establishes a meridian of time for each belt. These meridians are fifteen degrees of longitude, corresponding to one hour of time, apart.

Eastern Maine, New Brunswick, and Nova Scotia use the 60th meridian; the Canadas, New England, the Middle States, the Virginia, and the Carolinas use the 75th meridian, which is that at Philadelphia; the States of the Mississippi Valley, Alabama, Georgia, Florida, and westward, including Texas, Kansas, and the larger part of Nebraska and the Dakotas, use the 90th meridian, which is that of New Orleans; the Territories to the western border of Arizona and Montana, use the 105th meridian, which is that of Denver; and the Pacific States use the 120th meridian.

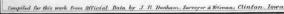
The time divisions are known as Intercolonial, eastern, central, mountain, and Pacific standard time.

A traveller passing from one belt to another will find his watch one hour too fast or too slow, according to the direction in which he is going. If travelling westward, his watch will be one hour faster; if eastward, it will be one hour slower than the belt which he enters. This change of system reduced the time standards used by the different railroads from fifty-three to five, a great convenience to the railroads and travelling public.

The suggestion leading to the adoption of this new system originated with Professor Abbe, of the Signal Bureau at Washington, and was

endorsed by Dr. F. A. P. Barnard, of Columbia College, New York. The scheme was proposed in 1878, but was not adopted until it had been submitted to a number of scientific associations at home and abroad, and received their approval.









## ROAD LAWS OF NEBRASKA, KANSAS AND MISSOURI.

### ROAD LAWS OF NEBRASKA.

SECTION 1811. [SUPERVISION BY COUNTY BOARD.] The county board has a general supervision over the public roads of the county, with power to establish and maintain them as herein provided, and to see that the laws in relation to them are carried into effect. (1873, 1870.)

SEC. 1816. [WIDTH.] All public roads shall have a width of sixty-six feet.

SEC. 1817. [PUBLIC ROADS DEFINED.] All roads within this State which have been laid out in pursuance of any law of this State, or of the Territory of Nebraska, and which have not been vacated in pursuance of law, are hereby declared to be public roads: *Provided*, That all roads that have not been used within five years shall be deemed vacated.

SEC. 1818. [ESTABLISHMENT—PETITION.] Any person desiring the establishment, vacation, or alteration of any public road, shall file in the clerk's office of the proper county a petition signed by at least ten electors residing within five miles of the road proposed to be established or vacated, in substance as follows:

To the board of . . . . . county. The undersigned ask that a public road, commencing at . . . . . and running thence . . . . . and terminating at . . . . . be established, vacated, or altered (as the case may be).

SEC. 1819. [DEPOSIT FOR EXPENSES.] The petitioners for establishment or alteration of any public road shall, at the time of filing their petition therefor, deposit with the county clerk a sufficient sum of money to pay for the laying out or alteration of such road, the expense thereof to be paid out of such deposit, unless the road is finally established or altered. If the road is finally established or altered, the money shall be returned to the persons who deposited the same.

SEC. 1820. [COMMISSIONER—APPOINTMENT.] Upon compliance with the foregoing requisites, the county clerk shall appoint some suitable and disinterested elector of the county a commissioner to examine into the expediency of the proposed road, alteration, or vacation thereof, and report accordingly.

SEC. 1824. [SAME.] If he deems such establishment expedient, he may proceed at once to lay out the road as hereinafter directed, and may report accordingly, if the circumstances of the case are such as to enable him to do so, without pursuing the course pointed out in the next section.

SEC. 1825. [SURVEY.] If the precise location of the road cannot be otherwise given, he must cause the line of the road to be accurately surveyed and plainly marked out.

SEC. 1826. [PLAT AND REPORT—FILES.] A correct plat of the road, together with a copy of the field notes of the surveyor, if one has been employed, must be filed as a part of the commissioner's report, and he shall also state the probable cost of the work in laying out or altering such road, including any necessary bridges, culverts, and ditches. Such report shall be filed with the county clerk.

SEC. 1840. [ACTION OF COUNTY BOARD.] At the next meeting of the county board, after the proceedings hereinbefore contemplated have been had, the said board may hear testimony, consider petitions for and remonstrances against the establishment, vacation, or alteration, as the case may be, if such remonstrances be filed within the time provided in section 1820, and may establish, vacate, or alter or refuse to do so, as in their judgment, founded on the testimony, the public roads may require. Said board may increase or diminish the damages allowed by the appraisers, and may make such establishment, vacation, or alteration conditioned upon the payment in whole or in part of the damages awarded, or expenses in relation thereto.

SEC. 1843. [RECORD OF PLAT AND FIELD NOTES.] After the road has been finally established, the plat and field notes must be recorded by the county clerk.

SEC. 1844. [VACATION OF OLD ROAD.] The establishment of a new road on the route of a road already established according to law shall not vacate the road previously established, unless such vacation is prayed for in the petition, and so declared in the order establishing a new road.

SEC. 1851. [HOW ESTABLISHED.] Public roads may be established without the appointment of a commissioner, provided the written consent of all the owners of the land to be used for that purpose be first filed in the county clerk's office; and if it is shown to the satisfaction of the county board that the proposed road is of sufficient public importance to be opened and worked by the public, they shall make an order establishing the same, from which time only shall it be regarded as a public road.

SEC. 1852. [SAME—SURVEY NECESSARY.] If a survey for the establishment of the road named in the preceding section is necessary, the board, before ordering such survey, may require the parties asking for the establishment of such highway to pay, or secure the payment, of the expenses of such survey.

SEC. 1860. [SECTION LINES.] The section lines are hereby declared to be public roads in each county in this State, and the county board of such county may, whenever the public good requires it, open such roads without any preliminary survey, and cause them to be worked in the same manner as other public roads.

### COLLATED ROAD STATUTES OF KANSAS.

[N. B.—The main statute is chapter 108, Laws of 1874. The sections of that statute are here indicated by double section numbers, the numbers within brackets being the original numbers of the sections as they stand in the statute. It was necessary to break up the original arrangement of the law, in order to group together the various kindred provisions. Every section with a number, in brackets belongs to the road law of 1874.]

#### PETITION AND BOND.

SEC. 1 [1]. That applications for laying out roads, or for viewing, reviewing, altering, or vacating any road, shall be by petition to the board of county commissioners, signed by at least twelve householders of the county, residing in the vicinity where said road is to be laid out, viewed, reviewed, altered, or vacated; and one or more of the signers of any petition presented as aforesaid shall enter into a bond with sufficient security, payable to the State of Kansas, for the use of the county, to be approved by the county commissioners, conditioned that the persons signing such bond shall pay into the treasury of the county the amount of all costs and expenses accruing on said location, view, review, alteration, or vacation; in case the proceedings had in pursuance of said petition shall not be finally confirmed and established, and on neglect or refusal of the persons so bound, after a liability shall have accrued, the county clerk of the county shall collect, or cause to be collected, such costs and expenses, and pay the same into the county treasury.

SEC. 2 [2]. All petitions for laying out or altering roads shall specify the place of beginning, the intermediate points, if any, and the place of termination of such road.

#### APPOINTMENT OF VIEWERS AND GIVING NOTICE.

SEC. 3 [3]. Upon presentation of any petition for a road, or for the alteration or vacation of any road, to the county commissioners, at any regular session of their board, it shall be the duty of said commissioners, if they find the petition to be a legal one, and that the proper bond has been filed, to appoint three disinterested householders of the county as viewers, and the county clerk shall give notice by advertisement set up in the county clerk's office, and in every municipal township through which any part of said road is designed to be laid out, altered, or vacated, for at least twenty days, and by publication for two consecutive weeks in a newspaper, if there be one published in the county, setting forth that such petition has been presented, giving the substance thereof, and that viewers will, on such day as the commissioners have designated, not more than twenty days after the expiration of the notice herein required, proceed to view said road, and give to all parties a hearing. They shall also cause a record of such notice to be entered on their journal by the county clerk. They shall issue an order directing the county surveyor to meet with them at the time and place named in said notice, to survey such road. In case of failure to meet on the day designated, they may meet on the following day, without further notice; and in case of failure to meet within the time herein specified, new notice shall be given as hereinbefore provided; that in all applications for the location, change and relocation of any road to be located upon or along any section line, and the petition shall so state, and shall specify the section lines to be followed, the place of beginning and the place of ending, the survey may be dispensed with; and in case the owners of the land taken agree in writing to the proposed location, relocation, or change, and the commissioners are satisfied that the location, relocation or change proposed is practicable, and can be made without unreasonable expense, they may dispense with the viewing of such location, relocation, or change of road, and shall order the same to be opened, and shall also direct the county clerk to note such location, relocation or change of roads upon the road records of his office.

SEC. 4 [4]. It shall be the duty of at least one of the petitioners to cause six days' notice to be given in writing to the owner or owners, or their agents, if residing in the county, or if such owner be a minor, idiot or insane person, then to the guardian of said person, if a resident of the county, through whose land such road is proposed to be laid out and established, and also six days' notice to the county surveyor of the time and place of meeting, as specified in the notice of the commissioners. Copies of said notice to owners of lands, with affidavits of service attached, shall be filed in the county clerk's office before said road shall be established.

#### VIEW, SURVEY, DAMAGES, REPORTS, FINAL ACTION.

SEC. 5 [5]. It shall be the duty of the viewers, or a majority of them, and the county surveyor, to meet at the time and place specified in the notice aforesaid, or on the following day thereafter; and they may, if they deem it necessary, take to their assistance two suitable persons as chain carriers, and one as marker, and then proceed to view, survey, lay out, alter or vacate the road as prayed for in said petition, or as nearly so as a good road can be made at a reasonable expense, taking into consideration the utility, convenience and inconvenience and expense which will result to individuals as well as to the public, if such road, or any part thereof, shall be established and opened or altered. Said viewers shall also assess and determine the amount of damages sustained by any person or persons through whose premises the said road is proposed to be established. Such viewers shall not assess or award damages or compensation to any person or persons in consequence of the opening of said road, unless the owner or owners, or their agents or guardians, having been duly notified as provided in section 4, of the applications and proceedings by which a written application with said viewers, giving a description of the premises on which damages or compensation are claimed at the time of said view and hearing, as hereinbefore provided for: *Provided*, That in case any person has not received the notice of the view of said road, as the location of said road file an application for damages with the county commissioners, who shall determine the amount of damages sustained by such claimant; and all applications for damages shall be forever barred unless they are presented as provided for in this act.

### ROAD LAWS OF MISSOURI.

SEC. 7792. Roads to be opened and repaired—how—article not to apply, when.—All public roads in this state shall be established, opened, widened and repaired according to the provisions of this article: *Provided*, that in the location, opening, working and repairing of roads it shall not apply to counties that now have or may hereafter adopt township organization. (Laws 1887, p. 246, amended.)

SEC. 7793. Width of road, etc.—All public roads shall be not less than thirty nor more than sixty feet wide, to be determined by the county court according to the utility and necessity of such road. In cases where a road shall be widened, it shall be done

according to the provisions hereinafter provided for opening and establishing new roads. (Laws 1887, p. 246.)

SEC. 7795. County surveyor ex-officio road commissioner.—The county surveyor of each county shall be ex-officio commissioner of roads and bridges. (Laws 1887, p. 246.)

SEC. 7796. [Application for new road or change of road, how made.]—Applications for the establishment of new roads, or change of roads, shall be made by a petition to the county court, signed by at least twelve freeholders of the municipal township or townships through which said proposed road may run, three of whom shall be of the immediate neighborhood, specifying the proposed beginning, course and termination thereof, with not less than two points named on the direction of said road: *Provided*, that said proposed road shall run along government surveys whenever practicable; *provided, further*, said petition shall be accompanied by the names of all resident persons owning land through which said proposed road or change of road shall run, with the amount or damages claimed by them, so far as can be ascertained, and also the names of those who are willing to give the right of way for said proposed road or change of road. (Amended Laws 1893, p. 222—a.)

SEC. 7797. Notice to be given.—Notice of such intended application shall be given by printed or written hand-bills, put up in three or more public places in such municipal township or townships, one of which to be put up at the proposed beginning and one at the proposed termination of said road, at least twenty days before the first day of a regular term of the county court at which the petition is presented, and which notice shall apply and be binding on corporations as well as on persons. (Laws 1887, p. 246—b.)

SEC. 7798. [Court to hear remonstrance—duty of commissioner.]—The court when such petition is presented, accompanied by the names required by section 7796, upon proof of notice having been given as required by said section 7796, upon the remonstrance, if any be presented, of twelve or more freeholders residing in the township or townships through which the proposed road or change of road may run, three of whom shall reside in the immediate neighborhood, and such witnesses as the respective parties may produce in regard to the public necessity, practicability and probable damages to the owners of the land through which said proposed road or change of road may run, and who have not consented to relinquish the right of way, and the expenses of locating or changing said road in making culverts, bridges or grading; and if the court, after hearing the testimony, be of the opinion that the facts in the case justify the location or change of the road at the expense of the county, they shall make an order of record requiring the county road commissioner to view, survey and mark out such road, otherwise such proceedings shall be dismissed. *Provided*, that if the petitioners pay into the county treasury the probable amount of damages, as aforesaid, to the use of the owners of said lands, which shall be fixed at the time by the court, then said court shall make said order, requiring the road commissioner to view, survey and mark out such road. Said commissioner shall see that all relinquishments of the right of way of those who give the same are filed with the county clerk on or before the second day of the next term of said court, and shall take the names of all resident owners of land through which said road may run, and who have not or will not give the right of way, and the amount of damages claimed by each one separately, together with the numbers of land, and also his estimation of the cost of bridges, culverts and grading that may be needed upon such road, and report the same, together with his survey and plat of said road, on or before the second day of the next regular term thereafter; and if it appear from said report that the right of way has been secured and filed, as aforesaid, or that the damages claimed do not exceed the amount offered by the court, or deposited by the petitioners as aforesaid, the court shall order the road established or changed, as the case may be. (Amended Laws 1893, p. 222—c.)

SEC. 7803. Roads on county lines.—The county courts of the several counties shall have the power to locate highways on the boundary lines of the several counties, and shall, when the citizens of each of the counties living along the boundary lines shall petition for the road, as herein provided for establishing and opening roads, locate the same not less than forty feet wide on the line between the counties, each county appropriating one-half the land and money to open, grade, bridge and work the same. (Laws 1887, p. 248.)

SEC. 7805. New roads to be districted—owner to be given time to construct fences.—When a new road has been opened, it shall be districted and kept in repair, as other public roads. The county court shall, at the time of giving judgment for the establishment of the road, specify the time when the possession shall be given by the owner, giving the owner of the land a reasonable time, not exceeding six months, to erect fences, if the commissioner's report shows that the fencing is required, and also time to gather growing crops, if any are growing at the time on the premises, which time shall be stated in the judgment. (Laws 1887, p. 248.)





### PATRONS' DIRECTORY OF COFFEY COUNTY, KANSAS

57

#### AVON.

NAME.	BUSINESS.	POST OFFICE.	SEC.
Busset, A. M. . . . .	Farmer and Stock Raiser	Aliceville	5
Busset, E. A. . . . .	Farmer and Stock Raiser	Aliceville	9
Giesy, John . . . . .	Farmer and Stock Raiser	Burlington	26
Grobengieser, Wm. . . . .	Farmer and Stock Raiser	Aliceville	31
Hunter, A. A. . . . .	Farmer and Stock Raiser	Aliceville	7
Izenberger, J. H. . . . .	Farmer and Stock Raiser	Aliceville	5
Nybro, Ole . . . . .	Farmer and Stock Raiser	Aliceville	9
Rooney, R. J. . . . .	Real Estate, Live Stock, and Loan Broker	Aliceville	9
Rudolph, C. W. . . . .	Farmer and Stock Raiser	Aliceville	8
Sharon, K. . . . .	Farmer and Stock Raiser	Burlington	27
Skinner, A. G. . . . .	Farmer and Stock Raiser	Aliceville	4
Strickland, C. W. . . . .	Farmer and Stock Raiser	Leroy	10
Williams, Wm. . . . .	Farmer and Stock Raiser	Aliceville	35

#### BURLINGTON.

Armstrong, W. J. . . . .	Farmer and Stock Raiser	Burlington	35
Grimes, M. E. . . . .	Farmer and Stock Raiser	Burlington	34
King, Chas. . . . .	Farmer and Stock Raiser	Burlington	22
Taylor, Jasper . . . . .	Farmer and Stock Raiser	Burlington	7
Simmons, S. R. . . . .	Farmer and Stock Raiser	Burlington	19
Stockwell, E. C. . . . .	Farmer and Stock Raiser	Burlington	4
White, Jas. H. . . . .	Farmer and Stock Raiser	Burlington	10
White, Horace . . . . .	Farmer and Stock Raiser	Burlington	17

#### BURLINGTON (CITY OF).

NAME.	BUSINESS.
Barker, E. W. . . . .	Farmer and Proprietor of The Otter Creek Ranch.
Brown, W. W. . . . .	Attorney-at-Law.
Cheney, H. B. . . . .	Bonded Abstractor, Insurance and Notary Public.
Cogshall Lumber Co. . . . .	Dealer in all kinds of Building Material, Paints, Oils, Glass, Sewer Pipe, Building Brick, Cement, etc.
Cowgill, H. E. . . . .	Prescription Druggist.
Crego, E. J. . . . .	Bonded Abstractor, Loans; also Attorney-at-Law.
Davis, J. A. . . . .	Proprietor Forest City Hotel.
Dismore, W. H. . . . .	Proprietor Livery, Feed and Sale Stable.
Eastman, A. J. . . . .	Proprietor Third Street Drug Store.
Frazier, J. D. . . . .	Attorney-at-Law and Notary Public.
Gray & Brown . . . . .	Real Estate, Loans and Insurance.
Grennan, J. F. . . . .	Under Sheriff.
Hall, Geo. G. . . . .	Vice-President Burlington National Bank. Do a General Banking Business.
Justice, J. C. . . . .	Real Estate, Insurance and Collections.
Kishpaugh, G. A. . . . .	Florist, Owner and Proprietor of Burlington Greenhouse.
Knapp, A. R. . . . .	Physician and Surgeon.
Krueger, R. C. . . . .	Dealer in Staple and Fancy Groceries. Nothing but strictly pure goods carried in stock.
Lane & Kent . . . . .	Lands and Loans, Bonded Abstractors.
Mundell & Brown . . . . .	Dealers in Lumber and Paint and Building Material of all kinds.
Moore, A. B. . . . .	Probate Judge.
Morton, E. F. . . . .	Manufacturer of Fine Cigars.
Outsall, O. O. . . . .	Proprietor The Burlington Courier.
Palen, W. M. . . . .	County Clerk.
Reams, G. W. & Son. . . . .	Proprietors Burlington Foundry and Machine Shop.
Redmond, John . . . . .	Publisher of The Jeffersonian.
Rosborough, G. W. . . . .	Proprietor City Livery Stable.
Rudrauff, Wm. H. . . . .	Bonded Abstractor, Real Estate, Loans and Insurance.
Sanders, D. W. . . . .	Dealer in Furniture and Undertaking.
Sherwood, C. T. . . . .	County Superintendent of Schools.
Smith, C. O. . . . .	Editor and Proprietor of The Burlington Republican.
The Burlington Independent. . . . .	An Independent Journal. Publisher, Lem A. Woods.
The Peoples' National Bank. . . . .	A General Banking Business transacted.
Threlkeld, John . . . . .	Retired Stockman.
Tipton, W. J. . . . .	Ex-County Clerk.
Uncapher, T. . . . .	Attorney-at-Law.
Wade, E. H. . . . .	Clerk of the District Court.
Weaver, S. D. . . . .	Attorney-at-Law.
Wolfe, J. I. . . . .	Attorney-at-Law.

#### CALIFORNIA.

NAME.	BUSINESS.	POST OFFICE.	SEC.
Adams, A. . . . .	Farmer and Stock Raiser	Strawn	11
Atherly, Frank . . . . .	Farmer and Stock Raiser	Strawn	21
Coble, C. C. . . . .	Farmer and Stock Raiser	Hartford	5
Cochran, J. T. . . . .	Proprietor of "The Red Apple Farm"	Ottumwa	35
Curry, D. E. . . . .	Farmer and Breeder Pure Bred Hereford Cattle	Strawn	27
Hamman, C. . . . .	Farmer and Stock Raiser	Strawn	29
Hammerton, Jas. T. . . . .	Farmer and Stock Raiser	Hartford	36
Horrell, T. L., Sr. . . . .	Farmer and Breeder Short Horn Cattle and Poland-China Hogs	Strawn	28
Hertz, John . . . . .	Farmer and Breeder Pure Bred Hereford Cattle	Hartford	13

#### CALIFORNIA-Continued.

NAME.	BUSINESS.	POST OFFICE.	SEC.
Hoover, Silas . . . . .	Dealer in General Merchandise	Strawn	33
Hopkins, J. D. . . . .	Farmer and Breeder Registered Short Horn Cattle	Hartford	33
Mauck, F. S. . . . .	Farmer and Stock Raiser	Strawn	16
Norbury, Wm. K. . . . .	Farmer and Fruit Grower	Hartford	8
O'Donnell Bros. . . . .	Farmers and Breeders Short Horn Cattle and Poland-China Hogs	Hartford	26
Peres, Chas. A. . . . .	Farmer and Stock Raiser	Lebo	4
Pierce, Fred . . . . .	Farmer and Breeder Brown Leghorn Chickens	Hartford	19
Salb, Jos. . . . .	Farmer and Stock Raiser	Hartford	14
Saueressig, Jacob . . . . .	Farmer and Stock Raiser	Lebo	2
Stewart, J. W. . . . .	Farmer and Stock Raiser	Hartford	30

#### HAMDEN.

Cook, J. W. . . . .	Farmer and Stock Raiser	Burlington	2
Davis, J. F. . . . .	Farmer and Stock Raiser	Burlington	5
Hammond, E. J. . . . .	Farmer and Stock Raiser	Burlington	8
Keever, G. W. . . . .	Farmer and Stock Raiser	Burlington	14
Kiger, M. M. . . . .	Farmer and Stock Raiser	Burlington	23
Lane, A. W. . . . .	Farmer and Stock Raiser	Burlington	5
Leedy, H. C. . . . .	Farmer and Stock Raiser	Burlington	11

#### KEY WEST.

Courtner, Jas. . . . .	Farmer and Stock Raiser	Lebo	1
George, R. J. . . . .	Farmer and Stock Raiser	Olivette	4
Powell, A. H. . . . .	Farmer and Stock Raiser	Lebo	36
Romary, A. R. . . . .	Farmer and Stock Raiser	Olivette	1

#### LEBO.

NAME.	BUSINESS.
Brown, J. W. . . . .	Justice of the Peace and Notary Public.
Evans, E. R. . . . .	Real Estate Broker, Notary Public and Attorney-at-Law in the office.
Evans, W. P. & Son. . . . .	Publishers of The Lebo Enterprise.
Ogden, Stephen . . . . .	Postmaster.
Ott, Geo. E. . . . .	Dealer in Corn, Flax, Corn Chop and Corn Meal. Manufacturer of boiled and raw linsed oil, flax seed meal and oil meal.
Traylor, E. L. . . . .	Cashier of The Lebo State Bank. Do a General Banking Business.

#### LEROY.

NAME.	BUSINESS.	POST OFFICE.	SEC.
Ahlefeld, J. R. . . . .	Attorney-at-Law, Real Estate and Loans	Leroy	1
Baker, Ira W. . . . .	Proprietor Leroy Creamery. Wholesale dealer in butter, eggs, poultry, game, flour and feed. Highest prices paid for produce	Leroy	4
Cox, David . . . . .	Farmer and Stock Raiser	Leroy	4
Crotts, J. F. . . . .	Farmer and Stock Raiser	Leroy	11
Custer, B. H. . . . .	Farmer and Stock Raiser	Leroy	16
Decker, C. & Son . . . . .	Proprietors Three Rivers Mills. Dealers in flour, meal, bran and all kinds of chop feed	Leroy	4
Finley, A. D. . . . .	Of the Harris-Anderson Lumber Co. Dealers in Building Material of All Kinds	Leroy	1
Fockele, Frank . . . . .	Editor and Propr. of The Leroy Reporter	Leroy	1
Graham, R. K. . . . .	Farmer and Stock Raiser	Leroy	34
Hall, H. C. . . . .	Farmer and Stock Raiser	Leroy	26
High, C. T. . . . .	Notary Public and Collection Attorney	Leroy	1
Higginbotham, C. . . . .	Dealer in Shelf and Heavy Hardware. Farm Machinery and Buggies. Builders' hardware a specialty	Leroy	1
Hildreth, W. E. S. . . . .	Proprietor of The Leroy House	Leroy	1
Kesner, C. C. . . . .	Physician and Surgeon	Leroy	1
Owings, John W. . . . .	Farmer and Stock Raiser	Leroy	2
Rohrer, S. B. . . . .	State Immigration Agent, Real Estate and Loans	Leroy	1
Reddington, E. H. . . . .	Dealer in Implements and Harness	Leroy	1
Shemberger, Chas. . . . .	Proprietor Star Livery and Feed Stable	Leroy	1

#### LIBERTY.

Atherly, F. A. . . . .	Farmer and Proprietor of Evergreen Dairy Farm	Gridley	9
Beck, Martin . . . . .	Farmer and Stock Raiser	Gridley	18
Beyer, Geo. . . . .	Farmer and Stock Raiser	Barry	12
Brooks, Wm. . . . .	Justice of the Peace and Agent Luke Bros. of Chicago, Seed Co. Also breeder polled Angus cattle	Gridley	5





### LIBERTY—Continued.

NAME.	BUSINESS.	POST OFFICE.	SEC.
Douglass, R. . . . .	Farmer and Stock Raiser . . . . .	Burlington . . . . .	13
Elliott, H. E. . . . .	Farmer and Stock Raiser . . . . .	Gridley . . . . .	31
Errett, H. H. . . . .	Farmer and Breeder Short Horn Cattle . . . . .	Gridley . . . . .	12
Essex, T. J. . . . .	Farmer and Stock Raiser . . . . .	Gridley . . . . .	12
Mitchell, Robert . . . . .	Farmer and Stock Raiser . . . . .	Gridley . . . . .	25
Raaf, J. F. . . . .	Farmer and Stock Raiser . . . . .	Gridley . . . . .	7
Reed, H. B. . . . .	Wholesale Dealer in Hay and Grain at Kyle, and Breeder Hereford Cattle. . . . .	Gridley . . . . .	1
Rich, N. N. . . . .	Farmer and Stock Raiser . . . . .	Gridley . . . . .	1
Richardson, J. J. . . . .	Physician and Surgeon . . . . .	Gridley . . . . .	9
Schuch, Abe . . . . .	Farmer and Stock Raiser . . . . .	Gridley . . . . .	9
Schwind, Christ. . . . .	Farmer and Stock Raiser . . . . .	Gridley . . . . .	18
Somerhalder, J. . . . .	Farmer and Stock Raiser . . . . .	Burlington . . . . .	24
Steel, H. H. . . . .	Farmer and Breeder Pure Bred Short Horn Cattle and Black Langshang Chickens. . . . .	Gridley . . . . .	5
Todd, Robert . . . . .	Farmer and Stock Raiser . . . . .	Barry . . . . .	2

### LINCOLN.

Bethke, Fred . . . . .	Farmer and Stock Raiser . . . . .	Lebo . . . . .	6
Bowman Bros. . . . .	Farmers and Breeders Registered Red Polled Cattle and Poland-China Hogs . . . . .	Lebo . . . . .	33
Gorman, P. J. . . . .	Farmer and Breeder Registered Hereford Cattle . . . . .	Hartford . . . . .	26
Hughes, L. H. . . . .	Farmer and Stock Raiser . . . . .	Lebo . . . . .	30
Jones, T. M. . . . .	Farmer and Stock Raiser . . . . .	Lebo . . . . .	3
Jones, Hugh . . . . .	Farmer and Stock Raiser . . . . .	Lebo . . . . .	4
Kelly, Timothy . . . . .	Farmer and Stock Raiser . . . . .	Rapids . . . . .	24
Phinney, W. M. . . . .	Farmer and Stock Raiser . . . . .	Lebo . . . . .	11
Reid, Geo. . . . .	Farmer and Stock Raiser . . . . .	Lebo . . . . .	3
Siebauer, Louis . . . . .	Farmer and Stock Raiser . . . . .	Lebo . . . . .	4
Slead, G. H. . . . .	Farmer and Coal Operator. Proprietor one of the best mines in the county . . . . .	Hartford . . . . .	26

### NEOSHO.

Crandall, W. . . . .	Postmaster and Dealer in General Mer- chandise, also Stock Raiser. . . . .	Crandall . . . . .	14
De Witt, Mrs. Hattie E. . . . .	Farmer and Stock Raiser . . . . .	Gridley . . . . .	6
Gray, J. N. . . . .	Farmer and Stock Raiser . . . . .	Crandall . . . . .	26
Israel, A. . . . .	Farmer and Stock Raiser . . . . .	Crandall . . . . .	25
Main, F. G. . . . .	Farmer and Stock Raiser . . . . .	Leroy . . . . .	20
Mentzer, W. A. . . . .	Farmer and Stock Raiser . . . . .	Croftly . . . . .	5
Sims, J. W. . . . .	Farmer and Stock Raiser . . . . .	Leroy . . . . .	20
Struble, D. W. . . . .	Farmer and Stock Raiser . . . . .	Leroy . . . . .	30

### OTTUMWA.

Bayley, Chas. S. . . . .	Farmer and Stock Raiser . . . . .	Ottumwa . . . . .	7
Bennett, Geo. S. . . . .	Farmer and Stock Raiser . . . . .	Sharpe . . . . .	13
Brusemer, P. B. . . . .	Farmer and Stock Raiser . . . . .	Hall's Summit . . . . .	11
Carmean, J. M. . . . .	Farmer and Stock Raiser . . . . .	Hall's Summit . . . . .	12
Doherty, T. F. . . . .	Farmer and Stock Raiser . . . . .	Hall's Summit . . . . .	3
Gavethrop, R. O. . . . .	Farmer and Stock Raiser and Dairyman . . . . .	Burlington . . . . .	10
Haffner, J. B. . . . .	Farmer and Stock Raiser . . . . .	Hall's Summit . . . . .	3
Hamlin, Wm. . . . .	Farmer and Stock Raiser . . . . .	Ottumwa . . . . .	5
Harris, H. D. D. . . . .	Farmer and Stock Raiser . . . . .	Sharpe . . . . .	33
Holman, R. O. . . . .	Farmer and Breeder Pure Bred Short Horn Cattle. Young things for sale . . . . .	Burlington . . . . .	9
Huseman, Fred . . . . .	Farmer and Stock Raiser . . . . .	Sharpe . . . . .	24
Jackson, H. C. . . . .	Farmer and Stock Raiser and Shipper . . . . .	Hall's Summit . . . . .	2
Kelly, Mrs. W. A. . . . .	Farmer and Stock Raiser . . . . .	Burlington . . . . .	22
Russell, J. W. . . . .	Farmer and Stock Raiser, Buyer and Shipper . . . . .	Sharpe . . . . .	13
Scott, T. B. . . . .	Farmer and Stock Raiser . . . . .	Ottumwa . . . . .	17
Watkins, J. A. . . . .	Farmer and Stock Raiser . . . . .	Hall's Summit . . . . .	6
Williams, John . . . . .	Farmer and Stock Raiser . . . . .	Sharpe . . . . .	35

### PLEASANT.

Bailey, T. C. . . . .	Farmer and Breeder Poland-China Hogs . . . . .	Strawn . . . . .	10
Bowman, O. F. . . . .	Farmer and Breeder Standard Bred Horses. . . . .	Strawn . . . . .	2
Carter, C. W. . . . .	Farmer and Stock Raiser . . . . .	Burlington . . . . .	35
Cummins, Albert . . . . .	Farmer and Stock Raiser . . . . .	Strawn . . . . .	6
Grant, Z. T. . . . .	Farmer and Stock Raiser . . . . .	Strawn . . . . .	10
Hamman, Jacob . . . . .	Farmer and Stock Raiser . . . . .	Strawn . . . . .	2
Hessler, F. E. . . . .	Farmer and Stock Raiser . . . . .	Burlington . . . . .	30
Houck, J. M. . . . .	Farmer and Stock Raiser . . . . .	Burlington . . . . .	35
Hutchinson, S. A. . . . .	Farmer and Stock Raiser . . . . .	Burlington . . . . .	6
Keith, W. H. . . . .	Farmer and Stock Raiser . . . . .	Strawn . . . . .	16
King, E. D. . . . .	Propr. "Meadowbrook Farm." Breeder of Merino Sheep from registered stock . . . . .	Burlington . . . . .	26
McReynolds, W. D. . . . .	Farmer and Stock Raiser . . . . .	Burlington . . . . .	34
Reed, F. B. . . . .	Farmer and Stock Raiser . . . . .	Burlington . . . . .	7
Ryan, Henry . . . . .	Farmer and Stock Raiser . . . . .	Burlington . . . . .	13
Sanders, J. L. . . . .	Farmer and Stock Raiser . . . . .	Burlington . . . . .	35

### PLEASANT—Continued.

NAME.	BUSINESS.	POST OFFICE.	SEC.
Schif, Adam . . . . .	Farmer and Stock Raiser . . . . .	Patmos . . . . .	29
Stoutemyer, Z. F. . . . .	Farmer and Stock Raiser . . . . .	Burlington . . . . .	13
Underwood, A. M. . . . .	Farmer and Stock Raiser . . . . .	Burlington . . . . .	34
Wilcox, W. M. . . . .	Farmer and Stock Raiser . . . . .	Strawn . . . . .	8
Wood, G. A. . . . .	Farmer and Stock Raiser . . . . .	Burlington . . . . .	20

### POTTAWOTOMIE.

Burrows, W. P. . . . .	Farmer and Stock Raiser . . . . .	Waverly . . . . .	11
Kough, W. M. . . . .	Farmer and Stock Raiser . . . . .	Waverly . . . . .	31
Milham, W. F. . . . .	Farmer and Stock Raiser . . . . .	Waverly . . . . .	2
Pierson, W. A. . . . .	Farmer and Stock Raiser . . . . .	Pottawotomie . . . . .	29
Schmid, J. F. . . . .	Farmer and Stock Raiser . . . . .	Waverly . . . . .	10
Shaver, G. W. . . . .	Proprietor "The Prairie Ranch" . . . . .	Sharpe . . . . .	21
Wittman, Geo. . . . .	Farmer and Stock Raiser . . . . .	Pottawotomie . . . . .	33

### ROCK CREEK.

Bair, J. H. . . . .	Farmer and Stock Raiser . . . . .	Waverly . . . . .	36
Giffin, S. . . . .	Farmer and Stock Raiser . . . . .	Waverly . . . . .	19
James, A. J. . . . .	Farmer and Stock Raiser . . . . .	Waverly . . . . .	24
Nutt, J. J. . . . .	Farmer and Stock Raiser . . . . .	Waverly . . . . .	30
Sullivan, S. L. . . . .	Farmer and Stock Raiser, Buyer and Shipper . . . . .	Waverly . . . . .	29
Waring, L. W. . . . .	Farmer and Stock Raiser . . . . .	Waverly . . . . .	16
Williams, J. C. . . . .	Farmer and Stock Raiser . . . . .	Waverly . . . . .	24

### SPRING CREEK.

Bauer, Otto . . . . .	Farmer, Stock Raiser and Feeder. Also buyer and shipper of live stock . . . . .	Aliceville . . . . .	18
Crothers, Jacob . . . . .	Farmer and Stock Raiser . . . . .	Neosho Falls . . . . .	8
Heberlee, C. W. . . . .	Farmer and Stock Raiser . . . . .	Leroy . . . . .	25
Henkle, W. M. . . . .	Farmer and Stock Raiser . . . . .	Aliceville . . . . .	21
Herdman, Fred, C. . . . .	Farmer and Stock Raiser . . . . .	Leroy . . . . .	4
Hildebrand, Fred . . . . .	Farmer and Stock Raiser . . . . .	Leroy . . . . .	24
Miller, Levi . . . . .	Farmer and Stock Raiser . . . . .	Leroy . . . . .	4
Short, F. M. . . . .	Farmer and Stock Raiser . . . . .	Leroy . . . . .	13
Smith, H. J. . . . .	Farmer and Stock Raiser . . . . .	Leroy . . . . .	6
Wilson, J. Q. . . . .	Farmer and Stock Raiser . . . . .	Leroy . . . . .	29

### STAR.

Kirkpatrick Bros. . . . .	Proprietors Westphalia Marble and Gran- ite Works. Dealers in all kinds of foreign and domestic marble and gran- ite. Monumental work a specialty . . . . .	Westphalia . . . . .	16
Kramer, Lewis . . . . .	Farmer and Stock Raiser . . . . .	Westphalia . . . . .	16
Maxwell, J. C. . . . .	Farmer and Stock Raiser . . . . .	Burlington . . . . .	19
Sanders, W. W. . . . .	Farmer and Stock Raiser and Feeder . . . . .	Burlington . . . . .	13
Squires, R. E. . . . .	Farmer and Stock Raiser . . . . .	Westphalia . . . . .	15
Vawter, B. D. . . . .	Farmer and Stock Raiser . . . . .	Burlington . . . . .	22
Volland, Chas. . . . .	Farmer and Stock Raiser and Feeder . . . . .	Westphalia . . . . .	21

### WAVERLY.

NAME.	BUSINESS.
Anderson, J. E. & Co. . . . .	Dealers in Hardware, Stoves and Agricultural Implements Carriages, Wagons, etc. . . . .
Beasley, C. . . . .	Physician and Surgeon. . . . .
Burger, Andrew . . . . .	Real Estate and Loans . . . . .
Converse, Chas. M. . . . .	Cashier of the Bank of Waverly. Do a General Banking Business. . . . .
Collins & Carr . . . . .	Dealers in Hardware, Implements, Buggies, Stoves, Tinware, Seeds, etc. . . . .
Cook, A. C. . . . .	Lumber, Grain and Coal. . . . .
Cooper, H. L. . . . .	Attorney-at-Law, Collections and Conveyancing. . . . .
Donnell & Given . . . . .	Real Estate and Insurance . . . . .
Foster & Doty . . . . .	Proprietors City Livery Barn. . . . .
Ganse, Henry E. . . . .	Attorney-at-Law and Notary Public. . . . .
Gillman & Son . . . . .	Proprietors Livery and Feed Barn. . . . .
Hays, M. L. . . . .	Dealer in Lumber and Grain, Paint and Builders' Supplies, Lime, Sand, Cement, etc. . . . .
McDuffie, C. H. . . . .	Dealer in Furniture and Undertaking. . . . .
McFadden, H. W. . . . .	Stock Raiser and Feeder. . . . .
O'Neil & Lathrom . . . . .	Agents The Shawnee Fire Insurance Company of Topeka Kansas. . . . .
Rose, O. J. . . . .	Editor The Waverly Gazette. . . . .
Stimpson, T. W. . . . .	Stockman and Dealer in Grain. . . . .
Wagner, Mrs. P. . . . .	Proprietress of Hotel Wagner. . . . .
Warner, C. E. & Son. . . . .	Proprietors Waverly Repair and Manufacturing Shops. . . . .

### MISCELLANEOUS.

NAME.	BUSINESS.	POST OFFICE.
Bennett, F. S. . . . .	Immigration Agent. Sante Fe Route. President and Manager The Allen County Investment Company . . . . .	Iola . . . . . Kans.