

## Kansas People To "Travel on Gravel"

This Kansas Good Roads Association promotional literature highlights the construction of durable and beneficial roads for southeastern Kansas.

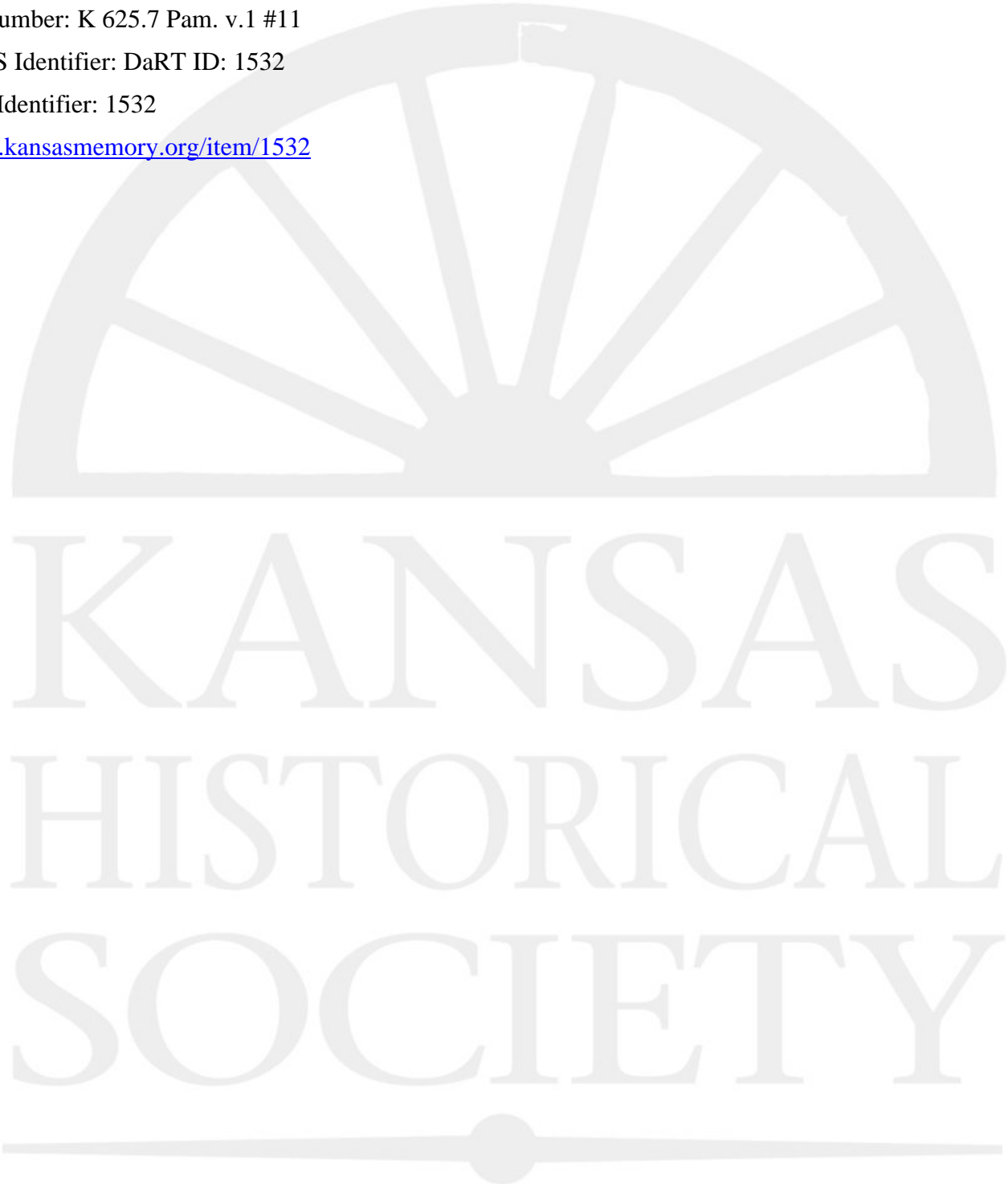
Date: 1919

Callnumber: K 625.7 Pam. v.1 #11

KSHS Identifier: DaRT ID: 1532

Item Identifier: 1532

[www.kansasmemory.org/item/1532](http://www.kansasmemory.org/item/1532)



## Kansas People To "Travel on Gravel"

625.7  
Pam. V.1  
ms. 11

### KANSAS PEOPLE TO "TRAVEL ON GRAVEL"

#### SOUTHEASTERN PART OF STATE SOON TO HAVE MANY MILES OF GOOD GRAVEL ROADS

**When the Native Gravel is Near the Roads it is a Good and Cheap Road to Build**

Where native gravel is available and the traffic is not too heavy a gravel road is one of the best and most economical roads constructed. Before the war good gravel roads were built at from \$1,000 to \$2,000 per mile. Under war prices the cost has advanced to \$2,000 to \$4,000 per mile. They can be constructed at all times of the year and very little skilled labor is required. In winter when farmers are not very busy they can haul gravel and help build the roads and thus make good wages for themselves and teams.

#### Wilson County

Wilson county is taking the lead in building gravel roads. There is plenty of good gravel in that county and the first-class gravel roads cost an average of \$2,500 per mile, with the average haul of the gravel three miles. The farmers are helping to build these roads and receive from 60 to 70 cts per hour for man and team.

They now have ten miles completed and over 100 miles financed and ready to be built as soon as possible. It is said that not a single land owner in that county, near the proposed gravel roads, has declined to sign the petitions for the roads.

The average cost to a farm of 160 acres in the benefit districts is about \$7.00 per year for ten years or a total of \$70.00.

#### Montgomery County

The county commissioners in Montgomery county have designated about 140 miles of the main market roads and agreed to build them of gravel as fast as the petitions are presented. The Kansas Good Roads Association assisted the people in this county to prepare the petitions and they are all either signed and presented or are being circulated. The commissioners announced that they would build the roads in the order of their filing. In this county the average cost to a 160 acre farm is \$10 per year for ten years for the entire 140 miles.

#### Neosho County

The county commissioners in Neosho county officially approved 137 miles of the main roads as proposed gravel roads. Petitions have been signed for a gravel road from Chanute to Erie and others will be circulated soon. The Kansas Good Roads Association is assisting the people in this county.

#### Other Counties

Allen, Cherokee, Labette and several others have petitions approved for gravel roads and will build them as soon as possible. A dozen other counties are planning to build gravel roads. The Good Roads Association is assisting most of the counties.

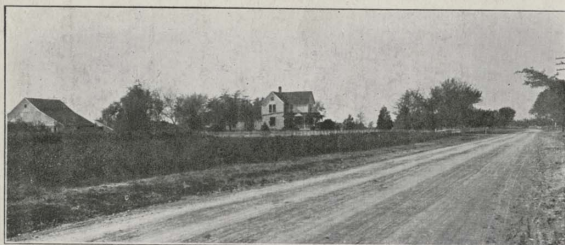
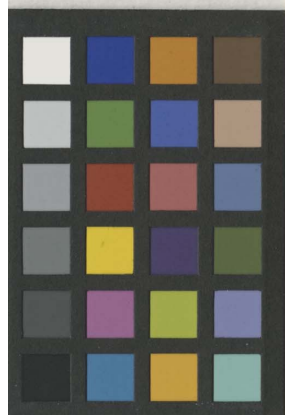
Some of the advantages of gravel roads:

- Where gravel is available they are cheap.
- Easy to build.
- Build them any time of the year.
- Cost to 160 acre farm near roads about \$7 to \$10 per year for 10 years.
- Easy to repair.
- Good for any kind of travel 365-days in the year.

20



## Kansas People To "Travel on Gravel"



### Shawnee County Graveled Road

This is a picture of a section of the 25 miles of gravel road between Topeka and St. Marys. This road was built about six years ago at an average cost of \$1,400 per mile. It is now carrying a heavy traffic all the year and is good rain or shine. It is well maintained. (over)

TWELVE 4 MINUTE TALKS ON  
GOOD ROADS

On this Card is

TALK NO. 9

If you would like to have the other  
eleven, write to the  
KANSAS GOOD ROADS ASSOCIATION

J. Frank Smith, General Manager  
TOPEKA, KANSAS

KANSAS STATE  
HISTORICAL SOCIETY.

KANSAS